

0 1 2 3 4 5 6 7 8 9

A  
three inches = one foot  
0 1 2 3 4 5 6 7 8 9

B  
one and one-half inches=one foot  
0 1 2 3 4 5 6 7 8 9

C  
one inch=one foot  
0 1 2 3 4 5 6 7 8 9

D  
three-quarters inch = one foot  
0 1 2 3 4 5 6 7 8 9

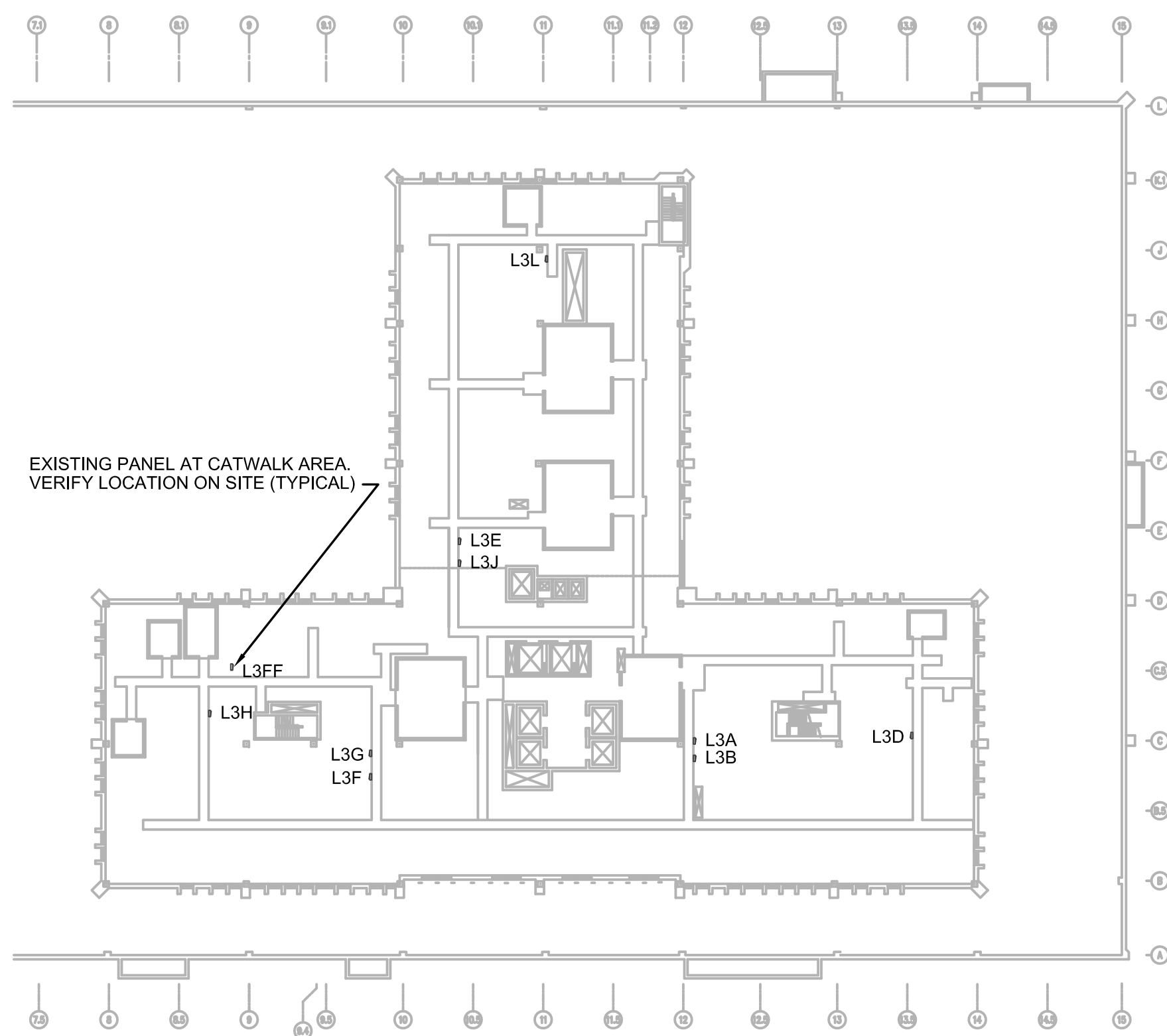
E  
one-half inch = one foot  
0 1 2 3 4 5 6 7 8 9

F  
three-eighths inch = one foot  
0 1 2 3 4 5 6 7 8 9

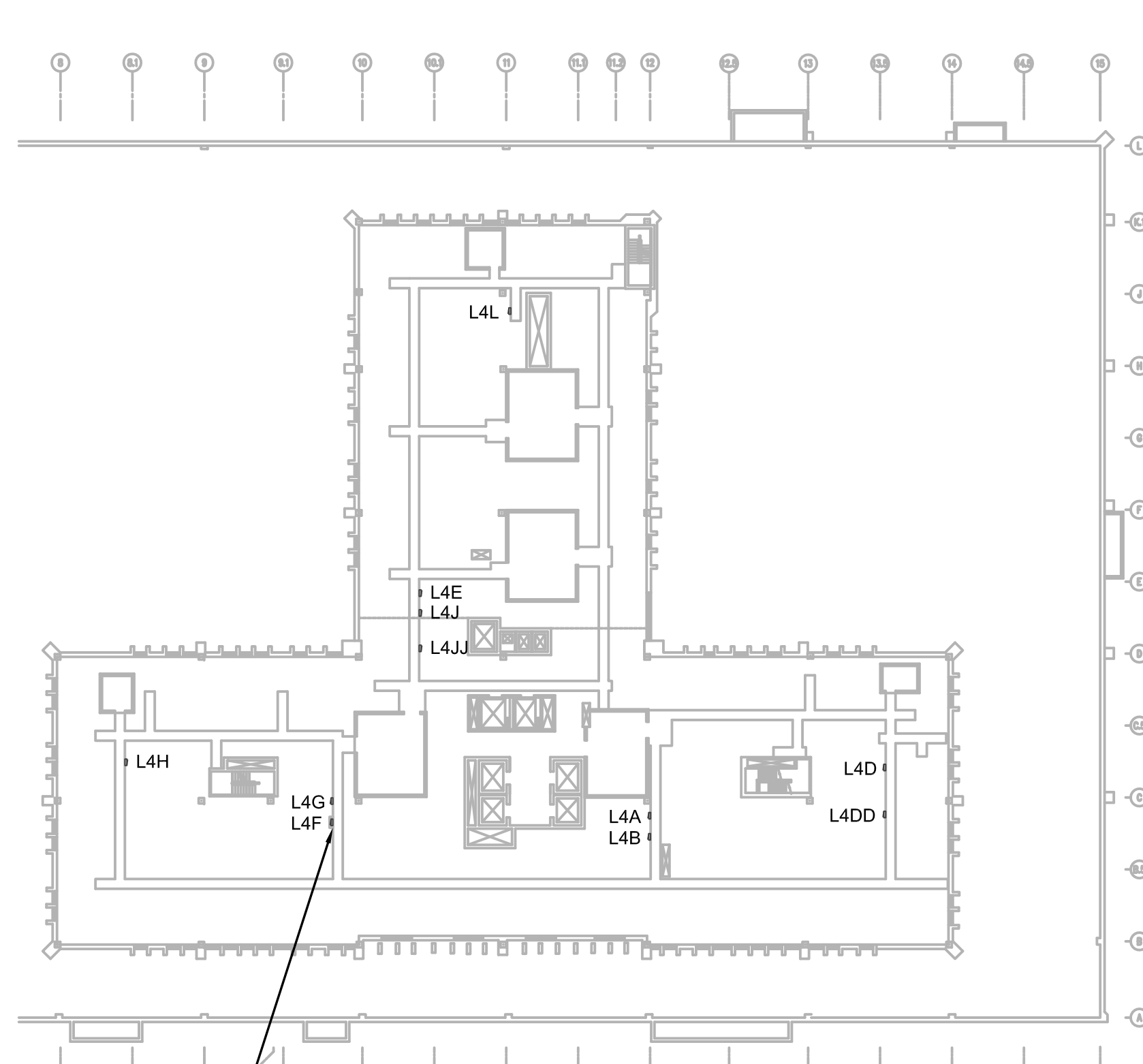
G  
one-quarter inch = one foot  
0 1 2 3 4 5 6 7 8 9

H  
one-eighth inch = one foot  
0 1 2 3 4 5 6 7 8 9

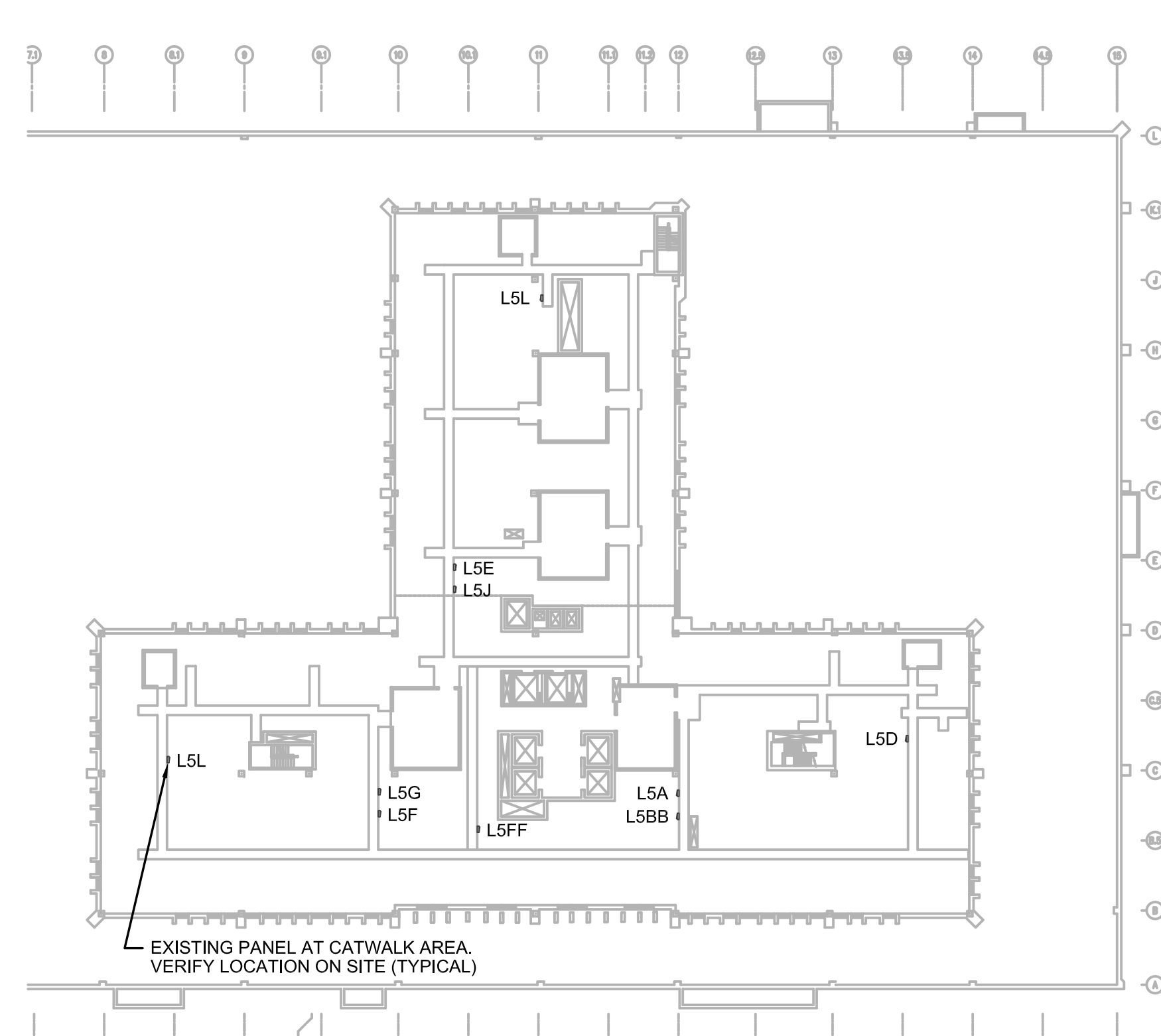
Computer Filenames:



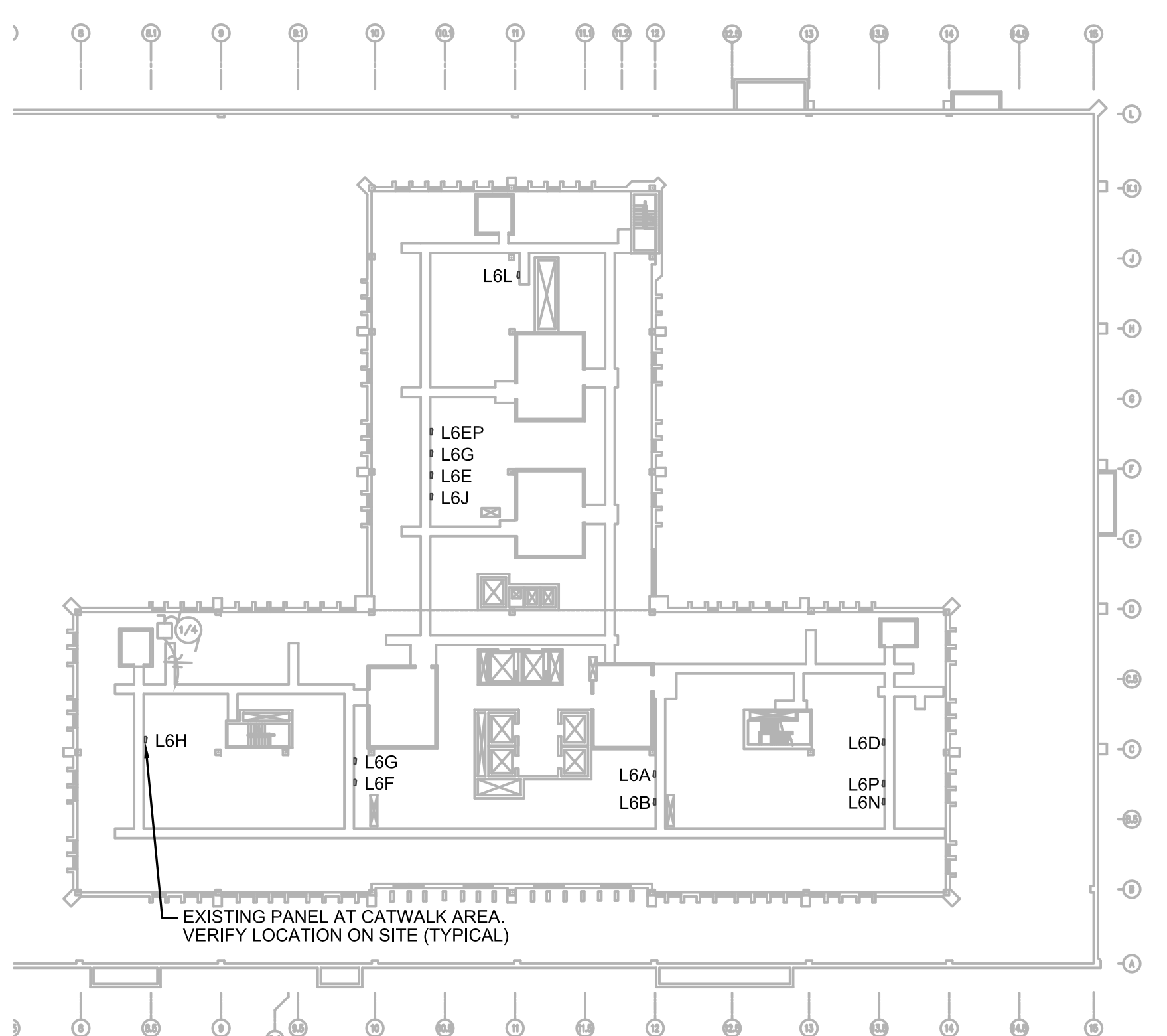
C1 THIRD FLOOR INTERSTITIAL PLAN, BLDG. CC  
SCALE: 1" = 40'-0"  
NORTH



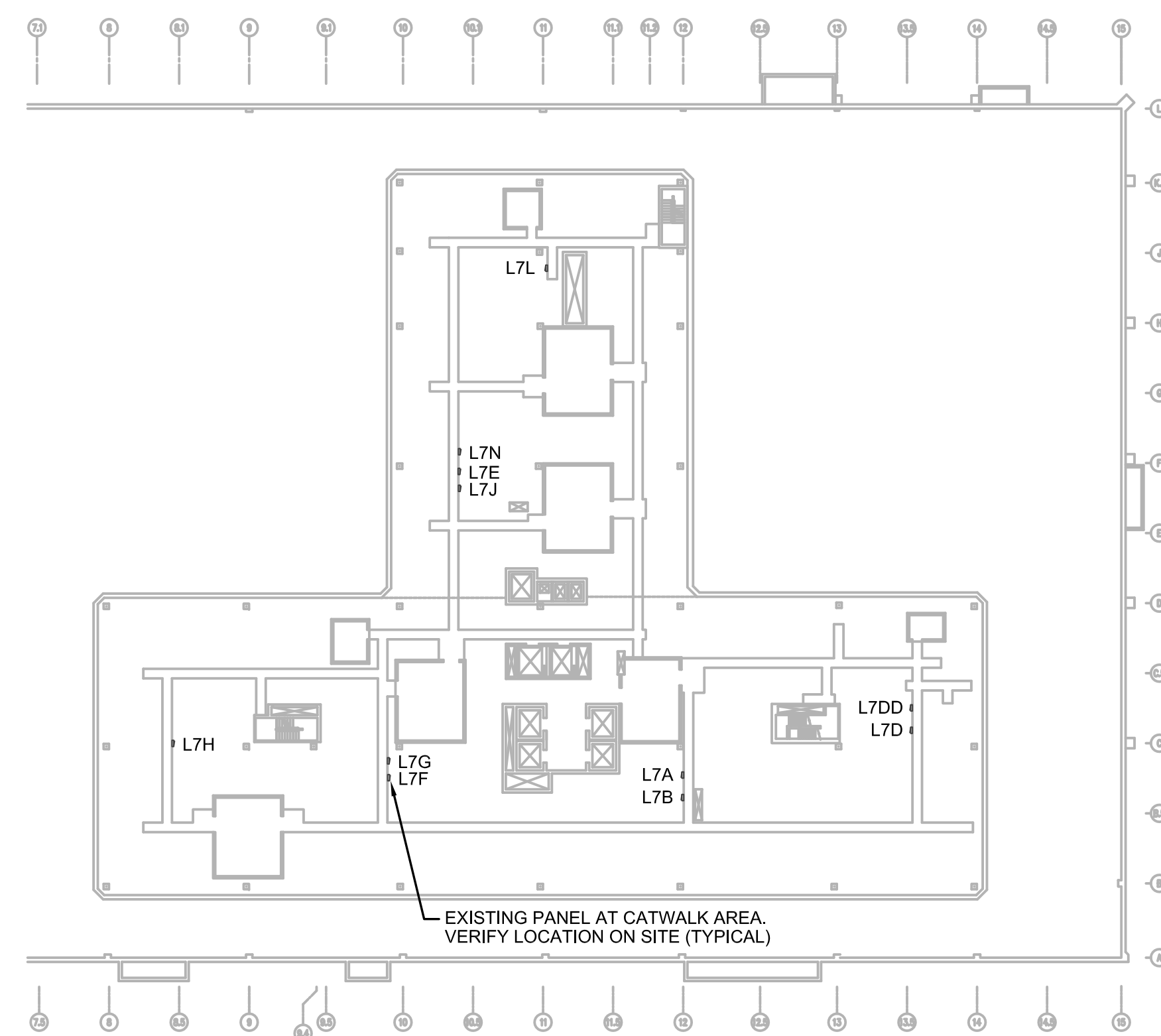
C1 FOURTH FLOOR INTERSTITIAL PLAN, BLDG. CC  
SCALE: 1" = 40'-0"  
NORTH



C1 FIFTH FLOOR INTERSTITIAL PLAN, BLDG. CC  
SCALE: 1" = 40'-0"  
NORTH



C1 SIXTH FLOOR INTERSTITIAL PLAN, BLDG. CC  
SCALE: 1" = 40'-0"  
NORTH



C1 SEVENTH FLOOR INTERSTITIAL PLAN, BLDG. CC  
SCALE: 1" = 40'-0"  
NORTH


## GENERAL NOTES:

1. FIELD VERIFY ALL DIMENSIONS.
2. COORDINATE ALL WORK AND PROJECT SCHEDULING WITH VA SAFETY, INFECTION CONTROL AND POLICE DEPARTMENTS.
3. PROJECT CONSISTS OF FACILITY WIDE PNEUMATIC TUBE SYSTEM (PTS) INSTALLATION TO THE VA SAN ANTONIO AUDIE L. MURPHY VA HOSPITAL. AFFECTED BUILDINGS ARE AS FOLLOWS:  
BUILDING CC, HOSPITAL & ADMINISTRATION, SEVEN FLOORS  
BUILDING CLC, COMMUNITY LIVING CENTER, TWO FLOORS  
BUILDING PRC, POLYTRAUMA REHABILITATION CENTER, THREE FLOORS
4. PROJECT SCOPE OF WORK (SOW) INCLUDES INSTALLATION OF A NEW PNEUMATIC TUBE SYSTEM THROUGHOUT THE HOSPITAL FACILITY. SCOPE SHALL INCLUDE THE FOLLOWING:  
A. INSTALLATION OF NEW GALVANIZED STEEL PNEUMATIC TUBING SUSPENDED FROM EXISTING STRUCTURE WITHIN INTERSTITIAL SPACES.  
B. INSTALLATION OF PNEUMATIC BLOWER UNITS.  
C. INSTALLATION OF PNEUMATIC TRANSFER UNITS.  
D. INSTALLATION OF PNEUMATIC TERMINAL UNITS.  
E. INSTALLATION OF PNEUMATIC ACCESSORIES SUCH AS CARRIER STORAGE UNITS AND ARRIVAL INDICATORS.  
F. ELECTRICAL UPGRADES TO ACCOMMODATE NEW EQUIPMENT.  
G. SELECT DEMOLITION.  
H. NEW FRAMING AND PARTITIONS FOR TERMINAL UNITS.  
I. NEW ARCHITECTURAL FINISHES.
5. THE INTERSTITIAL EQUIPMENT CONFIGURATION LAYOUT IS FOR REFERENCE PURPOSES ONLY. SPECIFIC PLACEMENT OF PNEUMATIC PIPING, TRANSFER UNITS, BLOWERS, VALVES HANGERS AND ASSOCIATED EQUIPMENT IS DEPENDANT UPON SPECIFIC MANUFACTURER'S REQUIREMENTS. COORDINATE EQUIPMENT PLACEMENT AND PNEUMATIC PIPING LAYOUT WITH SELECTED PNEUMATIC EQUIPMENT MANUFACTURER.
6. DRAWINGS E101 THRU E108 SHOW LOCATION OF PNEUMATIC TUBE CABINET TRANSFER UNIT LOCATION, AT EACH OF THESE LOCATIONS A NORMAL POWER 120V RECEPTACLE IS NEEDED TO SERVE THIS EQUIPMENT ON DRAWINGS. APPROXIMATE PANELBOARD LOCATION IS SHOWN. ELECTRICAL CONTRACTOR SHALL CONNECT TO THE CLOSEST NORMAL 120/208 VOLT PANEL, 1P-20A CIRCUIT BREAKER OR PROVIDE A 1P-20A CIRCUIT BREAKER IN AVAILABLE SPACE. MATCH EXISTING AIC RATING AND MANUFACTURER TYPE.

NOTE: INTERSTITIAL PLANS ARE SHOWN FOR GENERAL REFERENCE PURPOSES FOR PNEUMATIC TUBE SYSTEM PIPING CONFIGURATION WITHIN BUILDING CC. FIELD VERIFY EXISTING CONDITIONS AND AVAILABLE SPACE FOR NEW EQUIPMENT. NEW PNEUMATIC PIPING SHALL NOT INTERFERE WITH EXISTING CAT-WALK AND ACCESS AREAS OR EXISTING EQUIPMENT AND DUCTWORK. NEW EQUIPMENT CONFIGURATION SHALL BE DESIGNED FOR EASE OF ACCESS TO EQUIPMENT PANELS, CONTROLS AND EASE OF MAINTENANCE.


## 100% CONSTRUCTION ISSUE

Revisions	Date

2201 N Collins, Suite 295  
Arlington, Texas 76011-2656  
(817) 461-0333 Fax: (817) 461-1025  
T: 110  
MECHANICAL - ELECTRICAL - PLUMBING  
FBI PROJECT # 13069

FEI Project No.: 13069




Architecture ■ Planning ■ Interior Design  
4949 Addison Circle ■ Addison, Texas 75001

MPI Project No.: 8130707

Seal

Seal



04/24/2015

Drawing Title

**BUILDINGS CC  
THIRD THRU SEVENTH FLOOR  
INTERSTITIAL PLANS**

Approved: Area Project Manager

Project Title

**AUDIE L. MURPHY VA HOSPITAL  
PNEUMATIC TUBING SYSTEM**

Building Number  
**CC**

Location  
7400 Merton Minter  
San Antonio, TX 78229

Checked  
**SLT**

Drawn  
**AOP**

Date  
**04/24/15**

Project No.  
**671-13-104**

Drawing No.  
**E111**

Dwg. of

South Texas  
**Veterans  
Health Care  
System**

STVHCS  
San Antonio, Texas