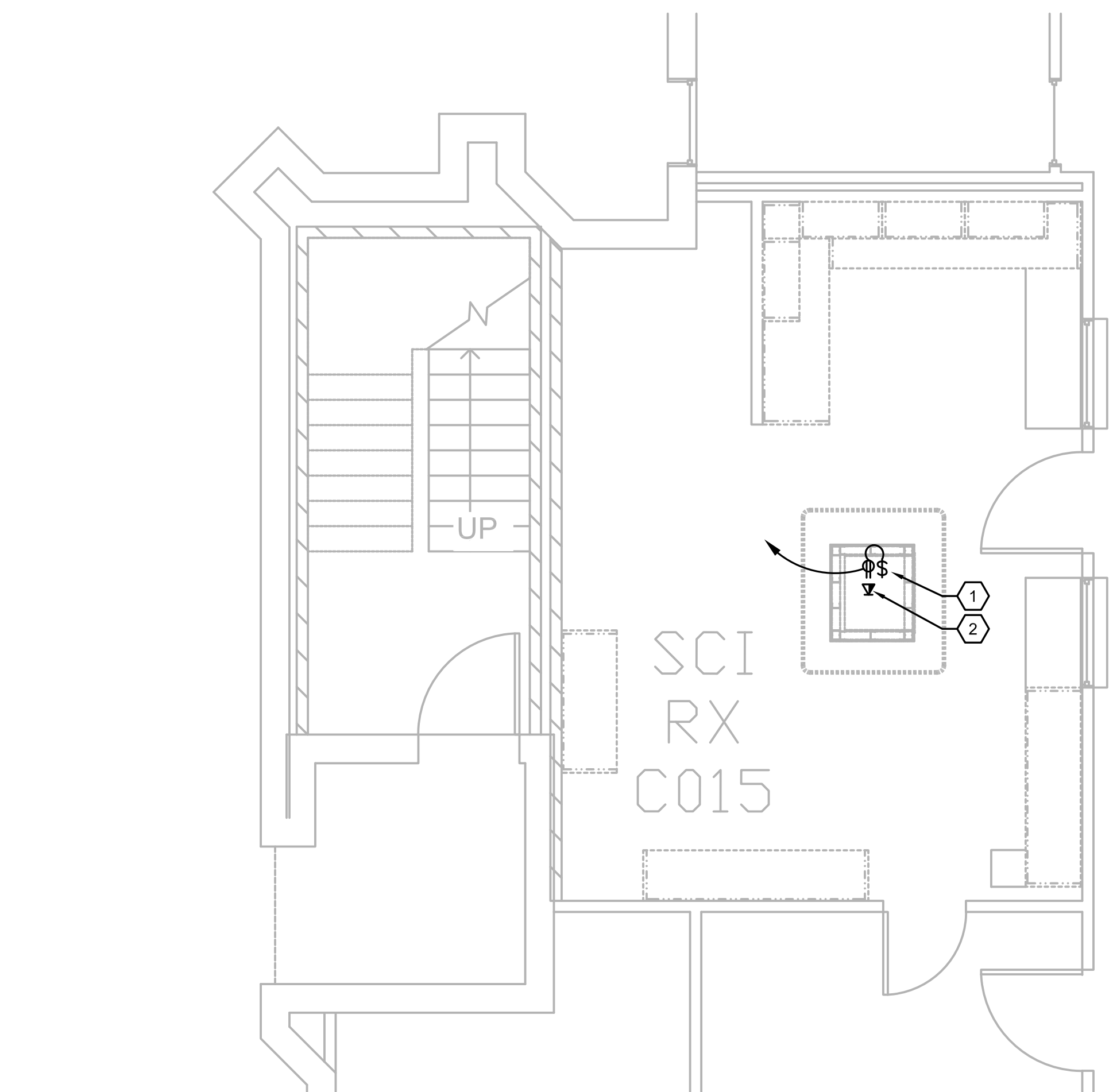
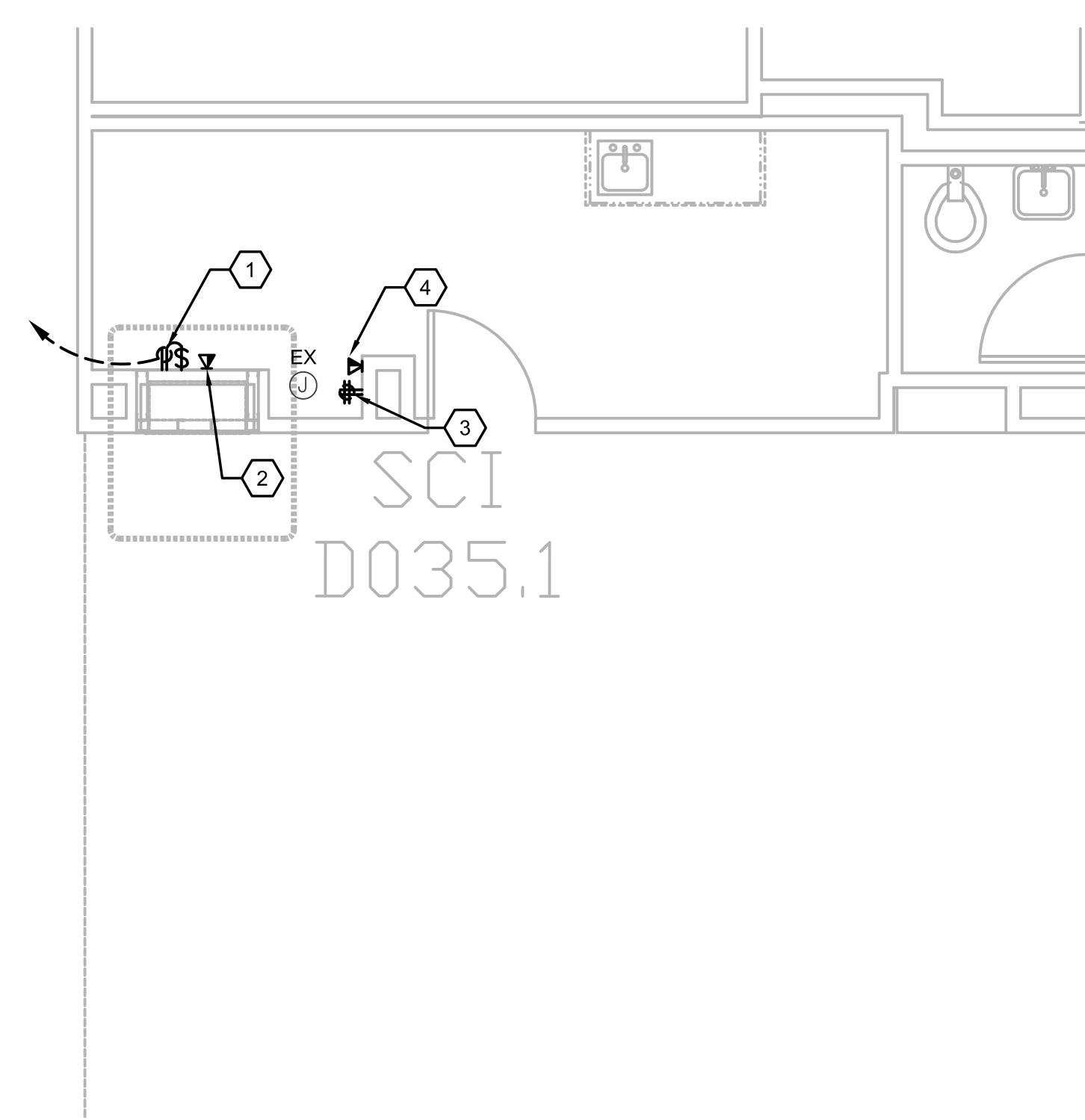


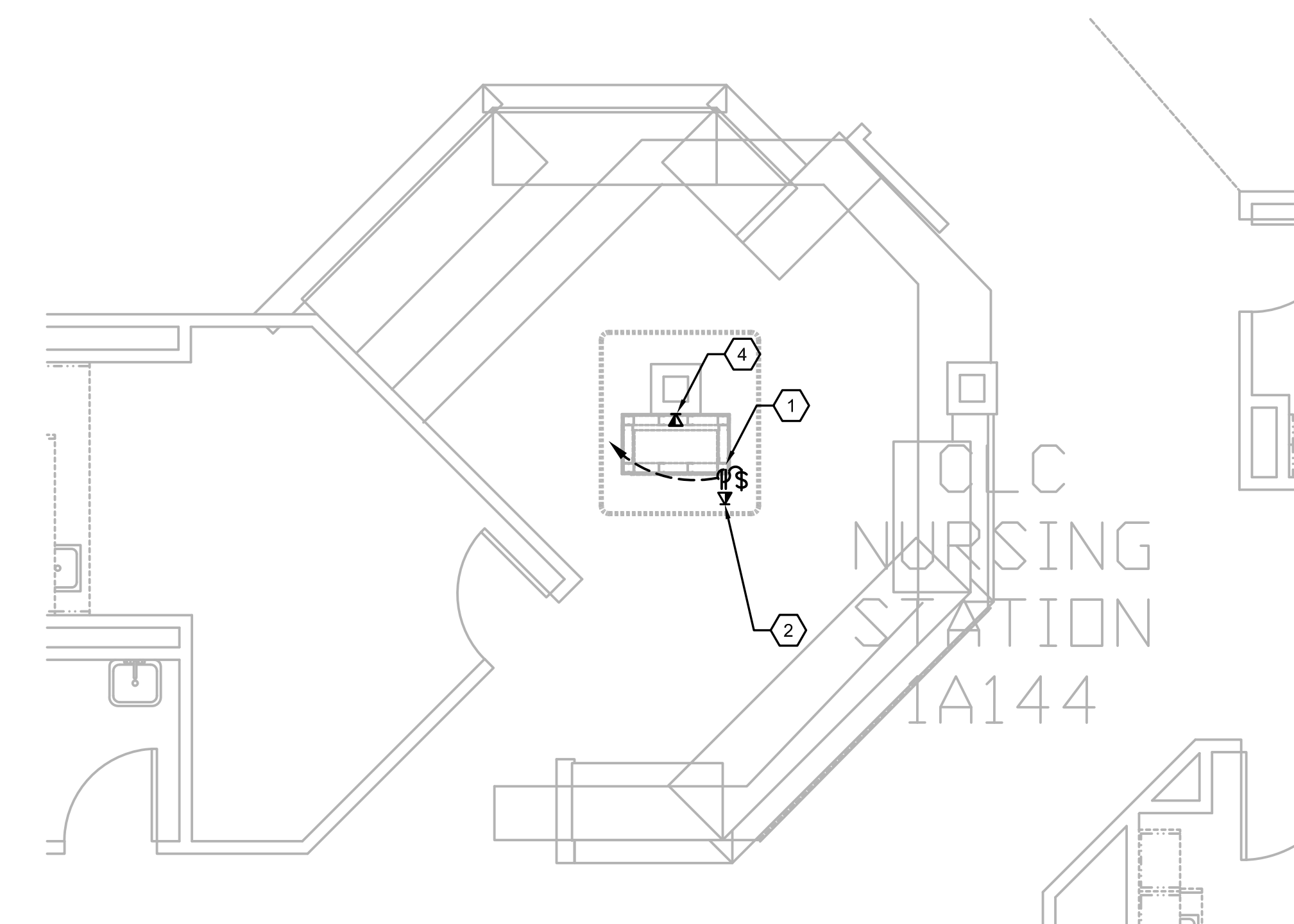
Computer Filenames:
one-eighth inch = one foot
one-quarter inch = one foot
three-eighths inch = one foot
one-half inch = one foot
three-quarters inch = one foot
one inch = one foot
one and one-half inches = one foot
two inches = one foot
three inches = one foot



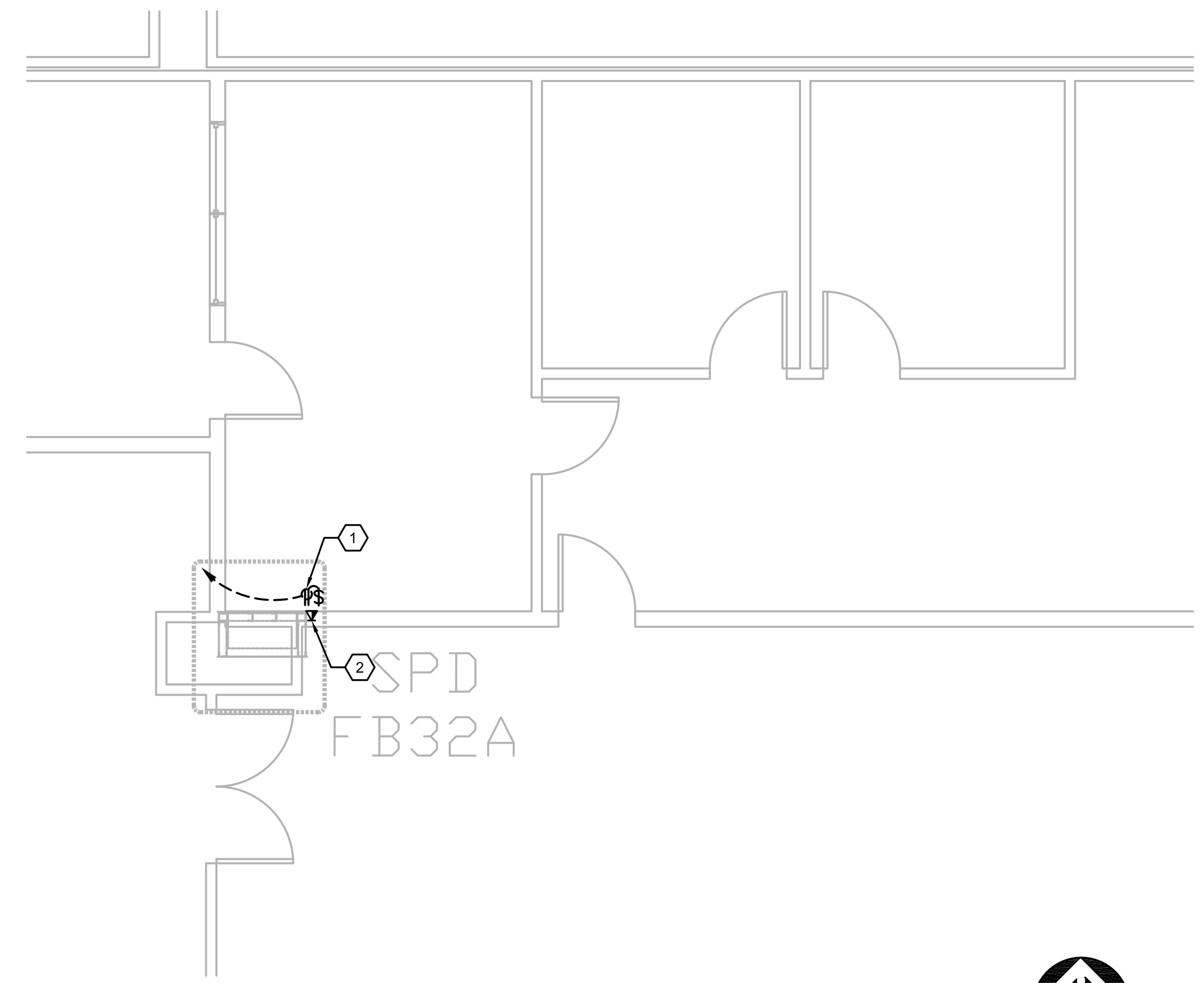
B1 GROUND FLOOR PLAN, BLDG. CC, (PTS #2) SCI PHARMACY C015
SCALE: 1/4" = 1'-0"



B5 GROUND FLOOR PLAN, BLDG. CC, (PTS #3) SCI NURSING STATION D035.1
SCALE: 1/4" = 1'-0"



F1 GROUND FLOOR PLAN, BLDG. CLC (PTS #4); NURSING STATION 1A144
SCALE: 1/4" = 1'-0"



F5 GROUND FLOOR PLAN, BLDG. CC (PTS #1); SPD FB32A
SCALE: 1/4" = 1'-0"



GENERAL NOTES:

1. REFER TO MEP000 FOR ADDITIONAL NOTES.

2. THE PNEUMATIC TUBE SYSTEM INFRASTRUCTURE DESIGN HEREIN BASED ON SWISSLOG HEALTHCARE SOLUTIONS EQUIPMENT. THE VA RESERVES THE RIGHT FOR APPROVAL OF ALTERNATE PNEUMATIC TUBE SYSTEMS MANUFACTURER.

3. CONTRACTOR SHALL RE-ROUTE ANY DUCTWORK, MECHANICAL OR PLUMBING PIPING, DAMPERS OR TERMINAL BOXES LOCATED IN THE CEILING PLENUM AS REQUIRED TO ACCOMMODATE NEW PNEUMATIC OR ASSOCIATED EQUIPMENT.

4. REFER E109 THRU E111 FOR PANELBOARD LOCATIONS AND ADDITIONAL INFORMATION.

NOTES BY SYMBOL: "⬡"




1. PROVIDE 120V, 20A, DUPLEX RECEPTACLE WITH TOGGLE SWITCH BEHIND CABINET OF THE PNEUMATIC TUBE SYSTEM STATION.


2. PROVIDE TELEPHONE/DATA OUTLET WITH ETHERNET, CAT5 OUTLET CAPABILITY BEHIND PNEUMATIC TUBE SYSTEM STATION.

3. REMOVE AND RETAIN EXISTING RECEPTACLE, OUTLET BOX, ASSOCIATED BRANCH CIRCUIT TO BE RELOCATED WITHIN THE ROOM NEAR EQUIPMENT BEING SERVED. COORDINATE EXACT LOCATION WITH OWNER PRIOR TO ROUGH-IN.

4. REMOVE AND RETAIN EXISTING TELE/DATA OUTLET, OUTLET BOX, ASSOCIATED WIRING TO BE RELOCATED WITHIN THE ROOM NEAR EQUIPMENT BEING SERVED. COORDINATE EXACT LOCATION WITH OWNER PRIOR TO ROUGH-IN.

100% CONSTRUCTION ISSUE

Revisions	Date	 <div>2201 N Collins, Suite 200 Arlington, Texas 76011-2000 (817) 461-0333 Fax: (817) 461-1025 E: info@fei-engineering.com MECHANICAL-ELECTRICAL-PLUMBING FEI PROJECT # 13069</div>	 <div>Architecture ■ Planning ■ Interior Design 4949 Addison Circle ■ Addison, Texas 75001</div>	Seal	 <div>MARK S. FRATTO REGISTERED PROFESSIONAL ENGINEER 60877 04/24/2015</div>	BUILDINGS CC & CLC GROUND FLOOR PLAN – PTS STATION LOCATIONS – ELECTRICAL	Approved: Area Project Manager	Project Title AUDIE L. MURPHY VA HOSPITAL PNEUMATIC TUBING SYSTEM			Date 04/24/15 Project No. 671-13-104 Drawing No. E401 Dwg. of
								Building Number CC, CLC	Checked SLT	Drawn AOP	
								Location 7400 Merton Minter San Antonio, TX 78229			



STVHCS
San Antonio, Texas