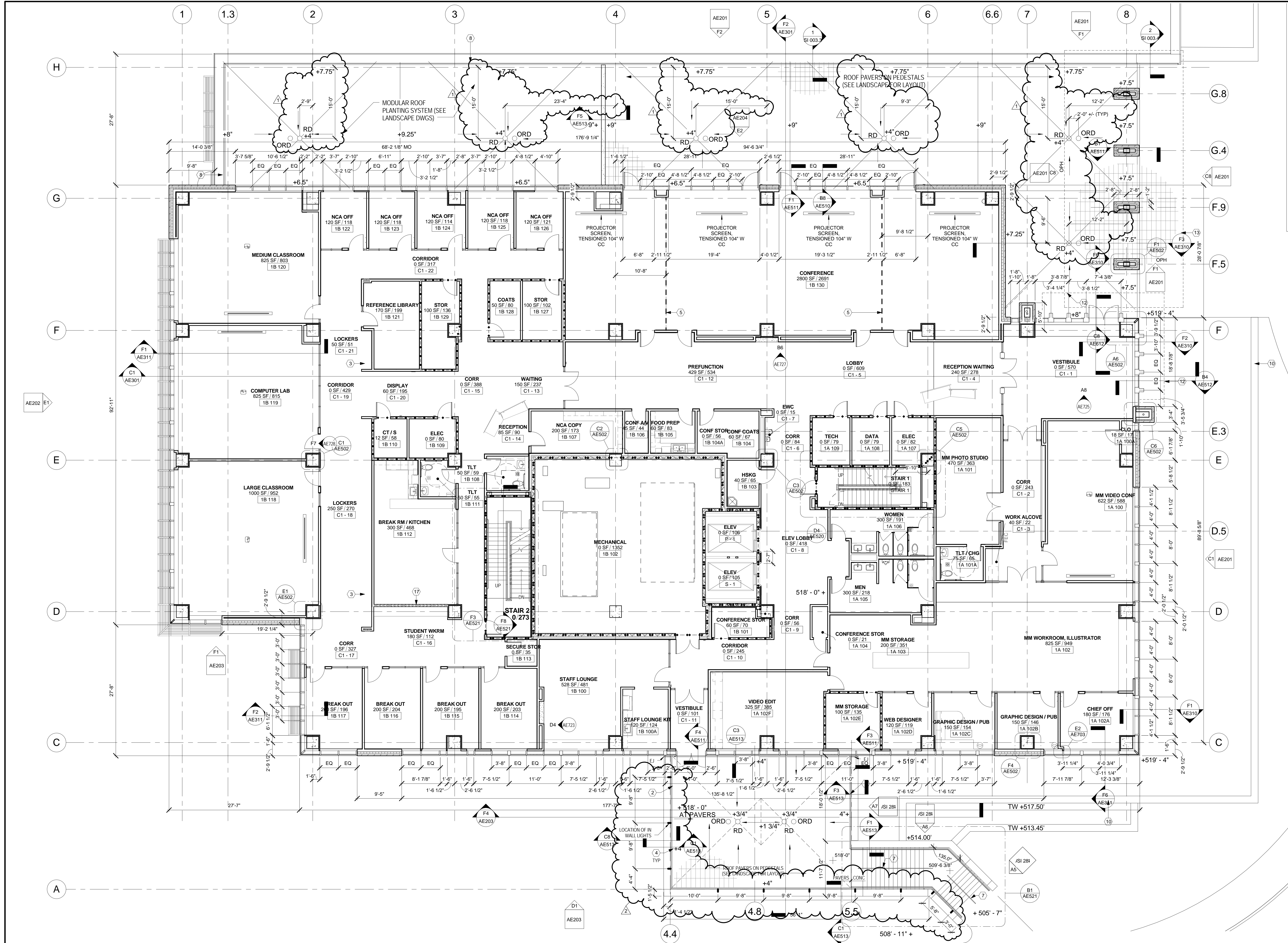


one eighth inch = one foot
one quarter inch = one foot
one half inch = one foot
three eighths inch = one foot
one inch = one foot
one and one half inches = one foot
two inches = one foot
three inches = one foot
four inches = one foot
five inches = one foot
six inches = one foot
seven inches = one foot
eight inches = one foot
nine inches = one foot
ten inches = one foot
eleven inches = one foot
twelve inches = one foot
thirteen inches = one foot
fourteen inches = one foot
fifteen inches = one foot
sixteen inches = one foot
seventeen inches = one foot
eighteen inches = one foot
nineteen inches = one foot
twenty inches = one foot
twenty one inches = one foot
twenty two inches = one foot
twenty three inches = one foot
twenty four inches = one foot
twenty five inches = one foot
twenty six inches = one foot
twenty seven inches = one foot
twenty eight inches = one foot
twenty nine inches = one foot
thirty inches = one foot
thirty one inches = one foot
thirty two inches = one foot
thirty three inches = one foot
thirty four inches = one foot
thirty five inches = one foot
thirty six inches = one foot
thirty seven inches = one foot
thirty eight inches = one foot
thirty nine inches = one foot
forty inches = one foot
forty one inches = one foot
forty two inches = one foot
forty three inches = one foot
forty four inches = one foot
forty five inches = one foot
forty six inches = one foot
forty seven inches = one foot
forty eight inches = one foot
forty nine inches = one foot
fifty inches = one foot
fifty one inches = one foot
fifty two inches = one foot
fifty three inches = one foot
fifty four inches = one foot
fifty five inches = one foot
fifty six inches = one foot
fifty seven inches = one foot
fifty eight inches = one foot
fifty nine inches = one foot
sixty inches = one foot
sixty one inches = one foot
sixty two inches = one foot
sixty three inches = one foot
sixty four inches = one foot
sixty five inches = one foot
sixty six inches = one foot
sixty seven inches = one foot
sixty eight inches = one foot
sixty nine inches = one foot
seventy inches = one foot
seventy one inches = one foot
seventy two inches = one foot
seventy three inches = one foot
seventy four inches = one foot
seventy five inches = one foot
seventy six inches = one foot
seventy seven inches = one foot
seventy eight inches = one foot
seventy nine inches = one foot
eighty inches = one foot
eighty one inches = one foot
eighty two inches = one foot
eighty three inches = one foot
eighty four inches = one foot
eighty five inches = one foot
eighty six inches = one foot
eighty seven inches = one foot
eighty eight inches = one foot
eighty nine inches = one foot
ninety inches = one foot
ninety one inches = one foot
ninety two inches = one foot
ninety three inches = one foot
ninety four inches = one foot
ninety five inches = one foot
ninety six inches = one foot
ninety seven inches = one foot
ninety eight inches = one foot
ninety nine inches = one foot
one hundred inches = one foot



- GENERAL NOTES:**
- A. NOT ALL KEYED NOTES USED ON THIS SHEET.
- B. EXTERIOR DIMENSIONS ARE SHOWN ON THE LOWEST LEVEL WHERE THEY APPLY. DIMENSIONS REMAIN THE SAME ASCENDING THE BUILDING UNLESS THE CONFIGURATION CHANGES. IF SO, THE DIMENSIONS WILL BE ADDED AND/OR CHANGED ON THE FIRST FLOOR WHERE THEY APPLY.
- KEYED NOTES - PLAN**
1. EXTENT OF RAISED/COMPUTER FLOOR (SHADED AREA)
 2. GUARDRAIL
 3. RECESSED LOCKERS
 4. VALUE INDICATES THICKNESS OF INSULATION ON ROOF DECK
 5. RETRACTABLE VERTICAL ACUSTICAL WALL PANEL SYSTEM
 6. ROOF TOP EQUIPMENT (SEE MECHANICAL)
 7. HANDRAIL
 8. GUARDRAIL (MASONRY PARAPET W/STEEL HANDRAIL)
 9. WALKPAD
 10. STONE WALL - SEE LANDSCAPE
 11. SCREEN WALL PER E5/AE513. REFER TO CIVIL FOR EXTENT.
 12. ROOF ABOVE
 13. CANOPY ABOVE
 14. TRANSOM ABOVE - 2'-0" HIGH. BOTTOM OF TRANSOM AT 7'-0" AFF
 15. REMOVABLE GUARDRAIL SECTION
 16. INSULATION DRAINAGE PANELS
 17. BORROWLITE. SEE BORROWLITE SCHEDULE ON SHEET AE610
 18. LIMIT OF RECESSED SLAB DIMENSION
 19. REFER TO DETAIL D1/AE530 FOR PARTITION AT EDGE OF RECESSED SLAB. PARTITION OVERHANGS SLAB 7/8"
 20. PARTITIONS WITHIN RECESSED FLOOR AREA (DENOTED BY SHADING PATTERN) EXTEND TO RECESSED FLOOR SLAB

CONSULTANTS:			CERTIFICATE OF AUTHORITY: 000842		ARCHITECT/ENGINEERS:		Drawing Title		Project Title		Project Number	
STRUCTURAL ENGINEER: KPFF CONSULTING ENGINEERS 1630 DES PERES ROAD, SUITE 100 ST. LOUIS, MO 63131 PHONE: (314) 835-0524			HAZARDOUS MATERIALS: ALTEC ENVIRONMENTAL CONSULTING, LLC P.O. BOX 17867 SHREVEPORT, LA 71138-0867 PHONE: (720) 283-8182		CHRISTNER		LEVEL 1 FLOOR PLAN		TENANT BUILDING		657-313D	
MECHANICAL/ELECTRICAL/PLUMBING: KJWW ENGINEERING CONSULTANTS #15 SUNNEN DRIVE, SUITE 104 ST. LOUIS, MO 63143 PHONE: (314) 645-1132			ESTIMATING: KRAMER BUILDING GROUP, INC. 1204 WASHINGTON AVENUE, SUITE 200 ST. LOUIS, MO 63103 PHONE: (314) 862-5344		ARCHITECTS DESIGNERS PLANNERS LANDSCAPE ARCHITECTS 168 N. MERAMEC AVENUE ST. LOUIS, MISSOURI 63105 TEL 314 725 2927 FAX 314 725 2928 CHRISTNERINC.COM		Approved: Project Director <i>[Signature]</i>		Location JEFFERSON BARRACKS DIVISION		Building Number 56	
2 7/22/14 SI 019 re: RFI 166			1 6/12/14 RFI 130				Date 29 OCTOBER 2012		Checked ADB		Drawn AK	
Revisions											AE101 Dwg. 96 of 177	

VA FORM 08-6231 PRINTED ON 9/21/2015 12:13:17 PM - ORIGINAL SIZE OF SHEET IS 30" X 42"