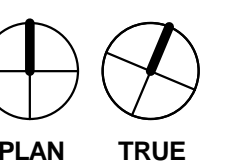
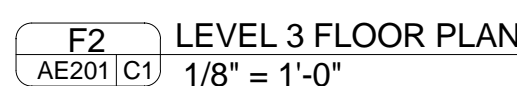






- 1 EXTENT OF RAISED/COMPUTER FLOOR (SHADED AREA)
- 2 GUARDRAIL
- 3 RECESSED LOCKERS
- 4 VALUE INDICATES THICKNESS OF INSULATION ON ROOF DECK
- 5 RETRACTABLE VERTICAL ACOUSTICAL WALL PANEL SYSTEM
- 6 ROOF TOP EQUIPMENT (SEE MECHANICAL)
- 7 HANDRAIL
- 8 GUARDRAIL (MASONRY PARAPET W/STEEL HANDRAIL)
- 9 WALKPAD
- 10 STONE WALL - SEE LANDSCAPE
- 11 SCREEN WALL PER ESA/E513, REFER TO CIVIL FOR EXTENT.
- 12 ROOF ABOVE
- 13 CANOPY ABOVE
- 14 TRANSOM ABOVE - 2'-0" HIGH. BOTTOM OF TRANSOM AT 7'-0" AFF
- 15 REMOVE/REPLACE GUARDRAIL SECTION
- 16 INSULATION DRAINAGE PANELS
- 17 BORROW/LITE. SEE BORROW/LITE SCHEDULE ON SHEET AE610
- 18 LIMIT OF RECESSED SLAB DIMENSION
- 19 REFER TO DETAIL D/AE530 FOR PARTITION AT OVERLAP OF RECESSED
SLAB. PARTITION OVERLAPS SLAB 7/8"
- 20 PARTITIONS WITHIN RECESSED FLOOR AREA (DENOTED BY SHADING
PATTERN) EXTEND TO RECESSED FLOOR SLAB



FULLY SPRINKLERED

			CONSULTANTS: STRUCTURAL ENGINEER: KPFF CONSULTING ENGINEERS 1630 DES PERES PARKWAY, SUITE 100 ST. LOUIS, MO 63131 PHONE: (314) 835-0524 MECHANICAL/ELECTRICAL/PLUMBING: COWI ENGINEERING CONSULTANTS #15 SUNSHEN DRIVE, SUITE 104 ST. LOUIS, MO 63145 PHONE: (314) 645-1132		CODE CONSULTANT/FIRE PROTECTION: CODE CONSULTANTS, INC. 1000 DES PERES PARKWAY, SUITE 300 ST. LOUIS, MO 63131 PHONE: (314) 991-2633 CIVIL ENGINEER: STOCK & ASSOCIATES CONSULTING ENGINEERS, INC. 257 CHESTERFIELD BUSINESS PARKWAY CHESTERFIELD, MO 63005 PHONE: (314) 530-8100		AUTOMATIC TRANSPORT: LERCH BATES INC. 8089 S. LINCOLN STREET, SUITE 207 LITTLETON, CO 80122 PHONE: (720) 283-8182 ESTIMATING: KWAME BUILDING GROUP, INC. 1204 WASHINGTON AVENUE, SUITE 200 ST. LOUIS, MO 63103 PHONE: (314) 862-5344		HAZARDOUS MATERIALS: ALTEC ENVIRONMENTAL CONSULTING, LLC P.O. BOX 17867 SHREVEPORT, LA 71138-0867 PHONE: (318) 687-3771 IRRIGATION CONSULTANT: KWAME BUILDING GROUP, INC. 9502 BANYON TREE ST. LOUIS, MO 63126 PHONE: (314) 843-1461		CERTIFICATE OF AUTHORITY: 000842 		ARCHITECT/ENGINEERS:  ARCHITECTS DESIGNERS PLANNERS LANDSCAPE ARCHITECTS 168 N. MERAMEC AVENUE ST. LOUIS, MISSOURI 63105 TEL 314 725 2927 FAX 314 725 2928 CHRISTNERINC.COM		THE SEAL(S) AND SIGNATURE(S) APPLY ONLY TO THE DOCUMENT TO WHICH THEY ARE APPLIED, AND WE EXPRESSLY DISCLAIM ANY RESPONSIBILITY FOR ALL OTHER PLANS, SPECIFICATIONS, ESTIMATES, REPORTS, OR OTHER DOCUMENTS OR INSTRUMENTS RELATING TO OR INTENDED TO BE USED FOR ANY PART OF THE SAME PROJECT. ©COPYRIGHT 2012 CHRISTNER INC. Drawing Title LEVEL 3 FLOOR PLAN Approved: Project Director 		Project Title TENANT BUILDING Location JEFFERSON BARRACKS DIVISION Date 29 OCTOBER 2012		Checked ADB		Drawn AK		Project Number 657-313D Building Number 56 Drawing Number AE103 Dwg. 98 of 177		Office of Construction and Facilities Management  Department of Veterans Affairs	
--	--	--	--	--	---	--	---	--	---	--	---	--	---	--	--	--	--	--	----------------	--	-------------	--	---	--	--	--