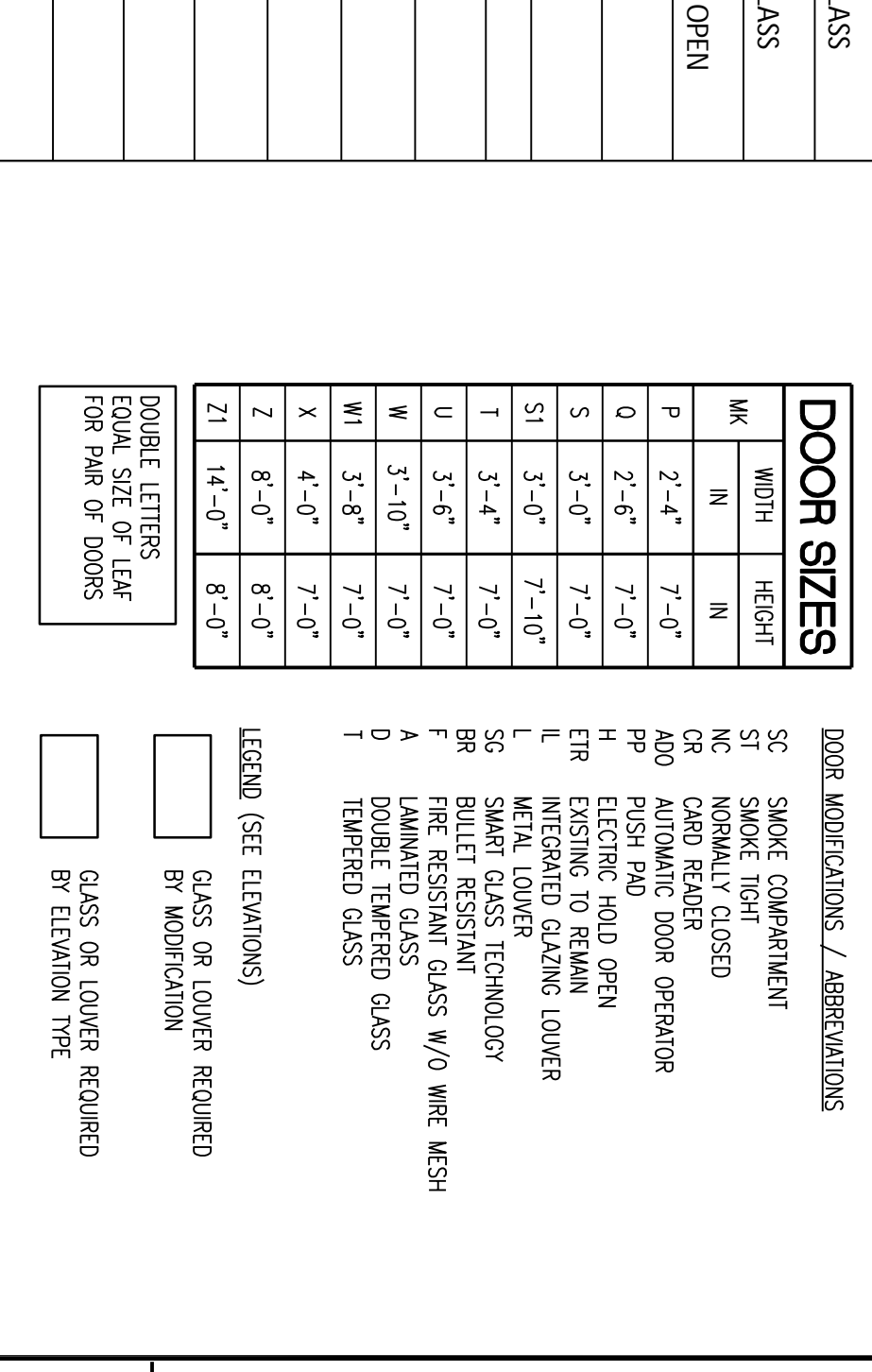
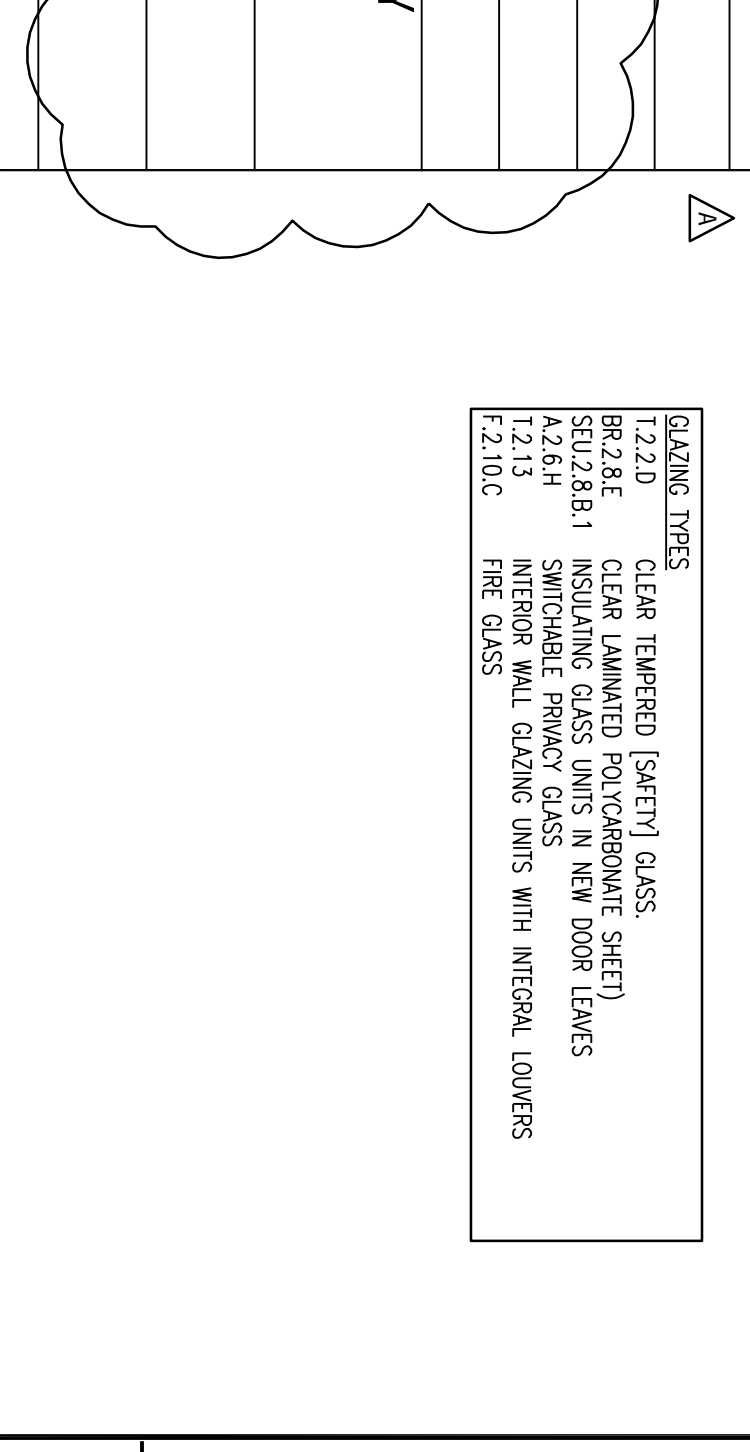
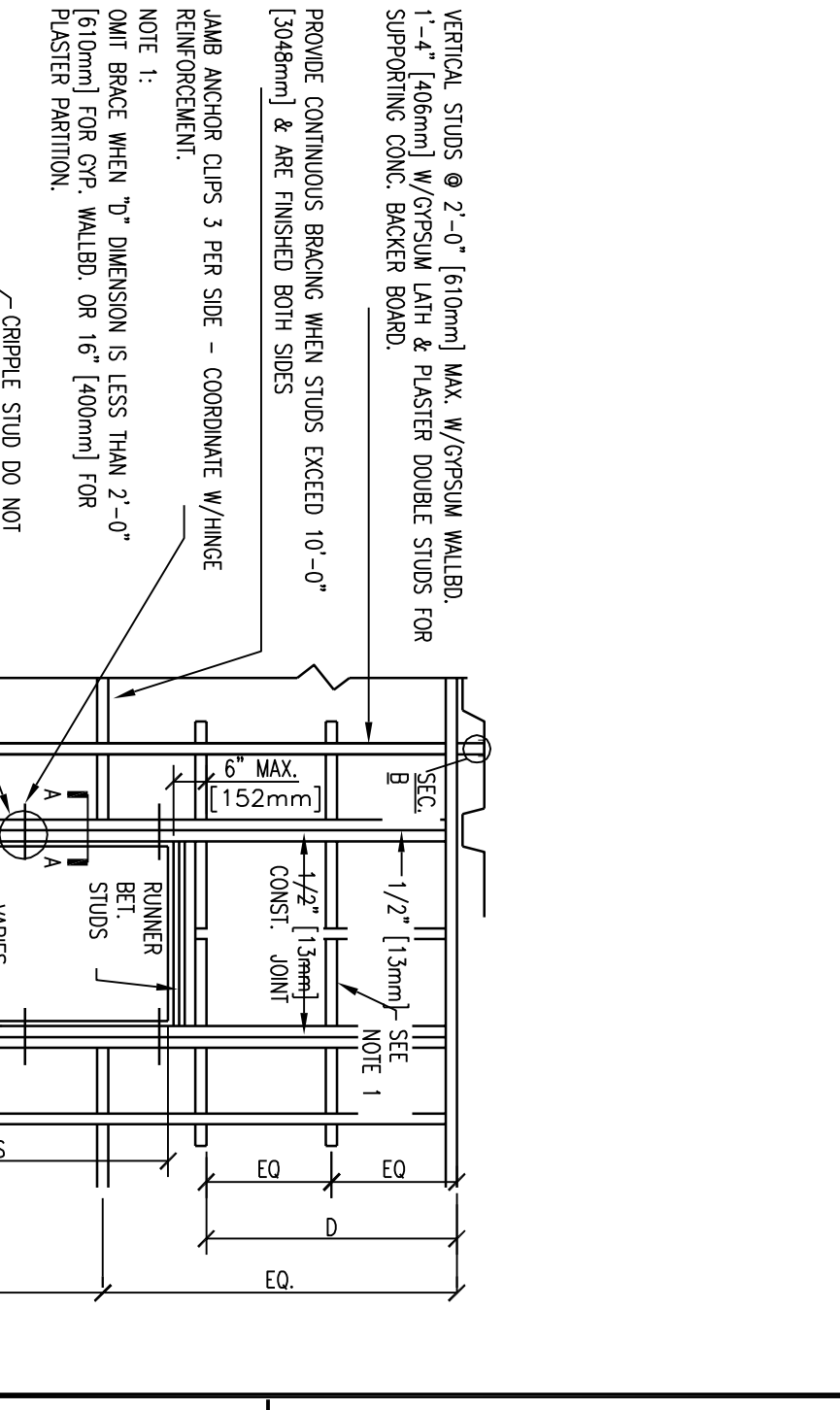
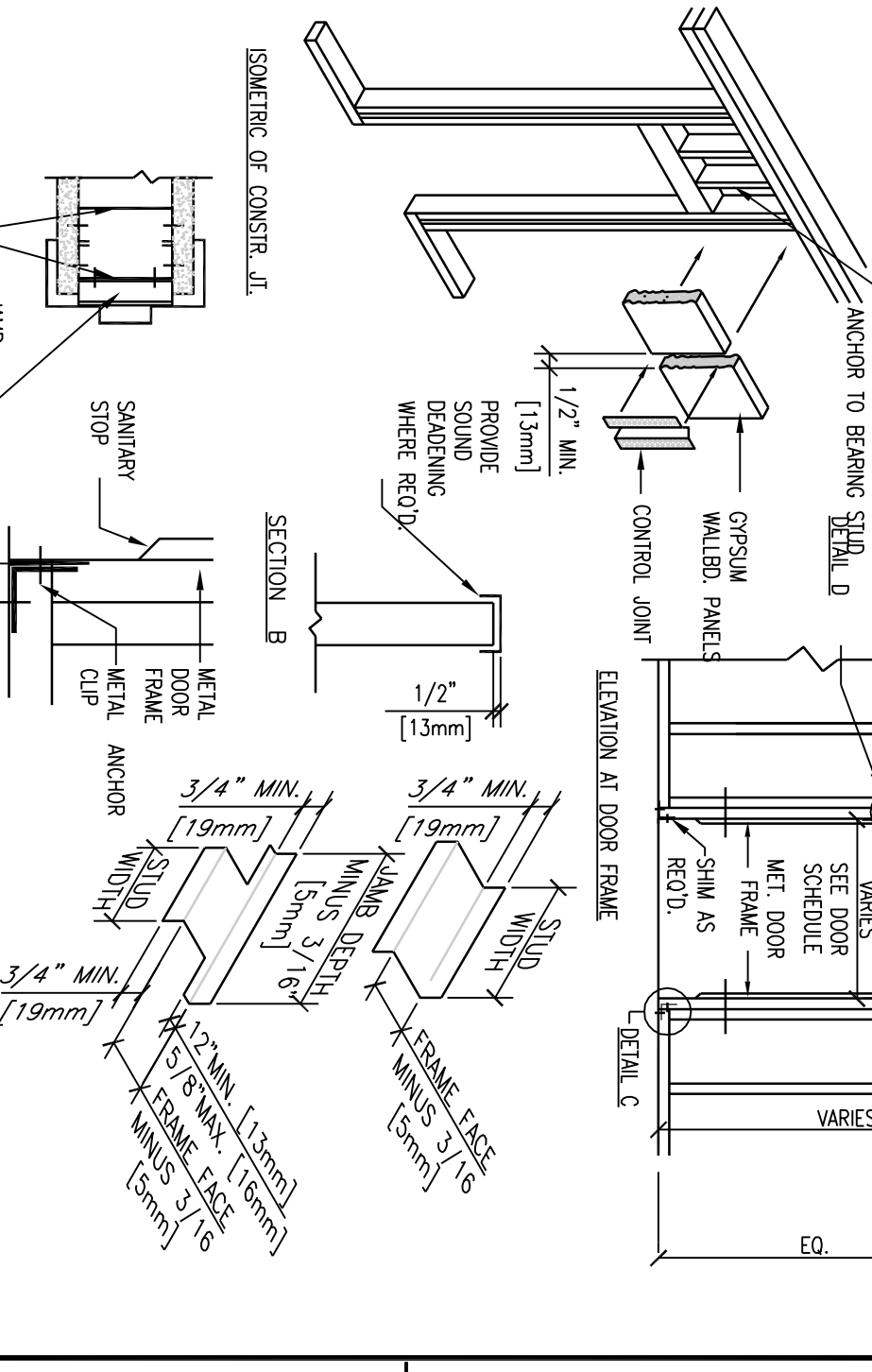
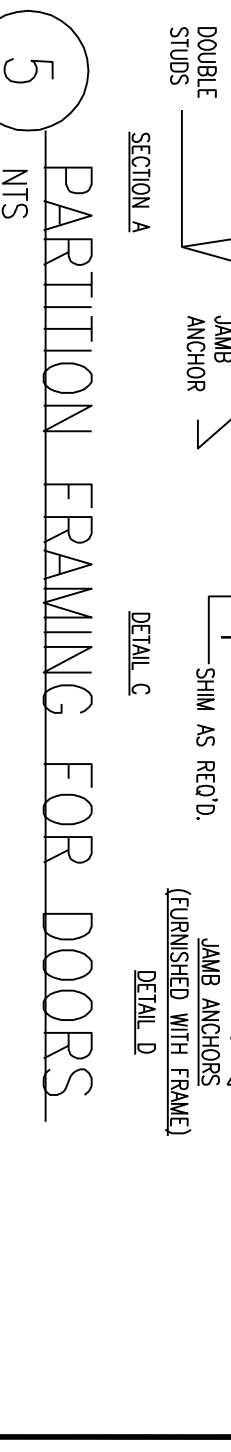
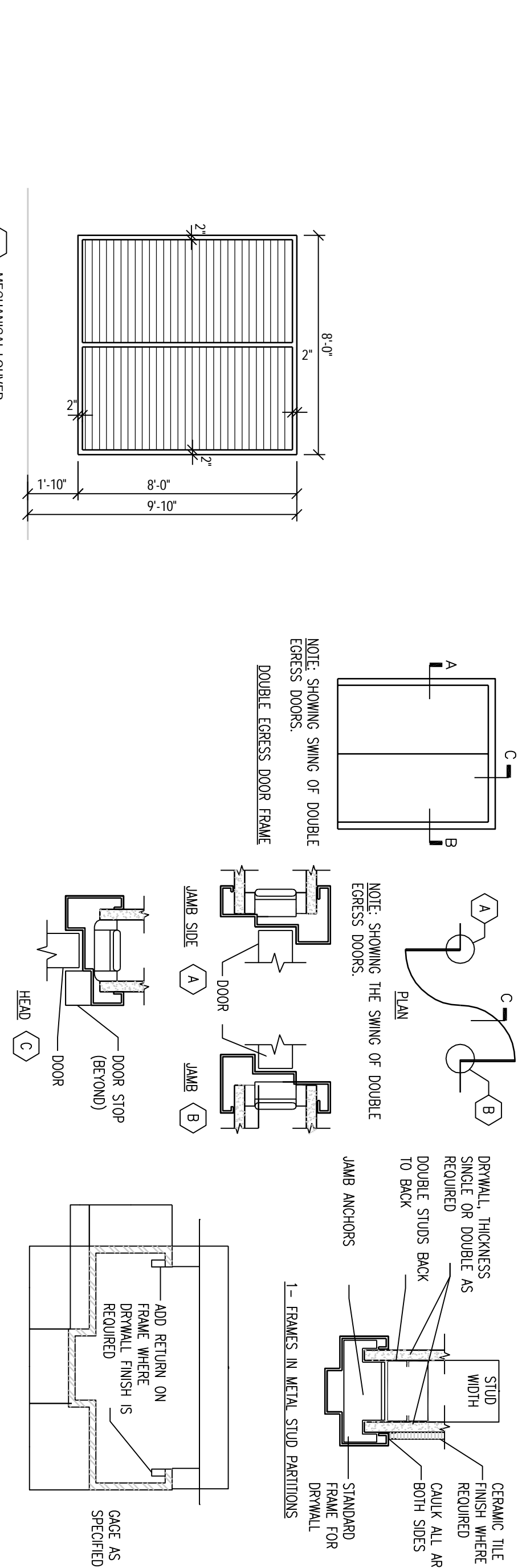
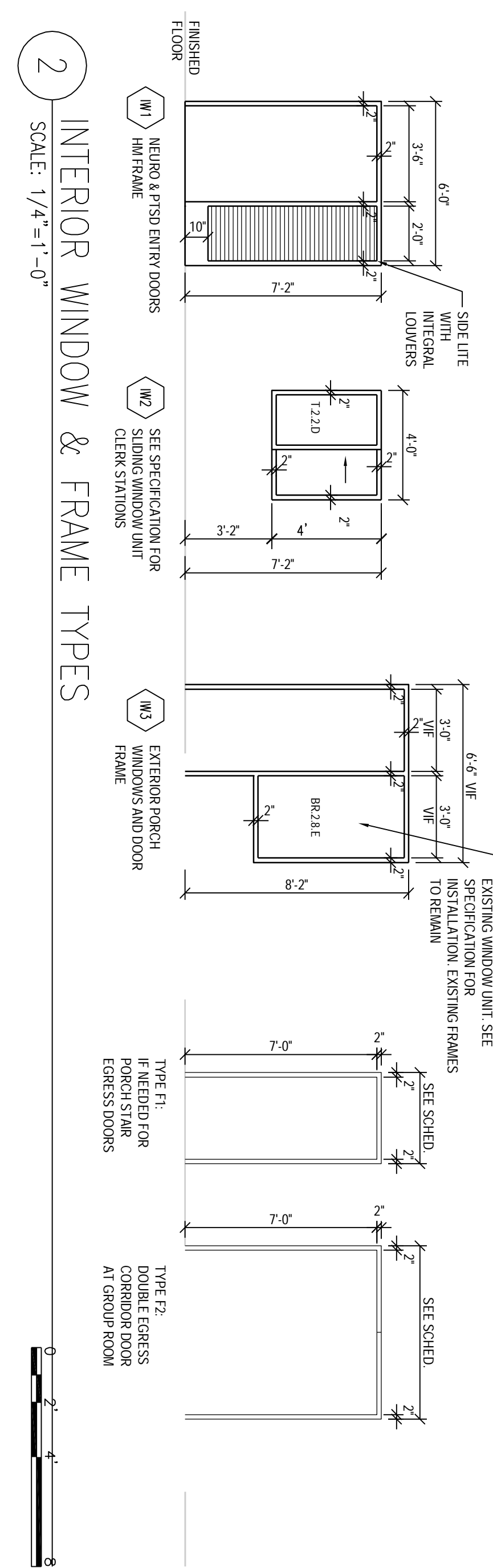
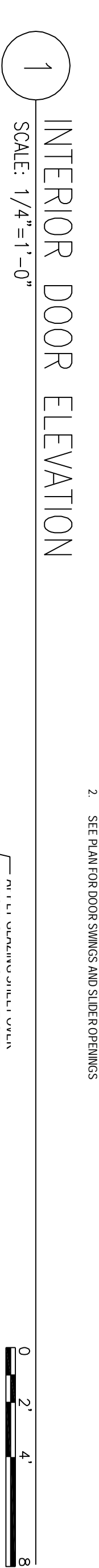
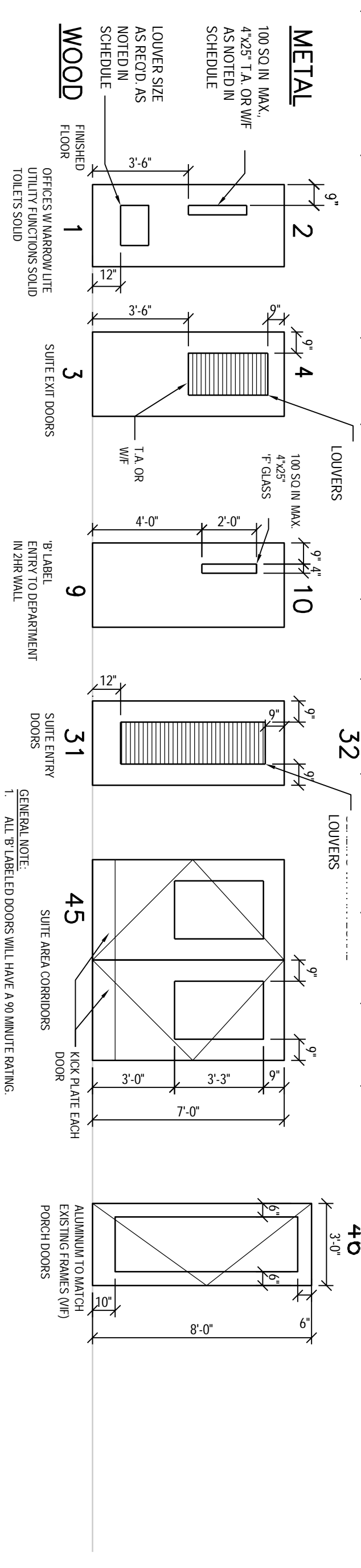




DOOR SCHEDULE

OPENING NO	ASSOCIATED ROOM	MARK	OPENING SIZE	WALL RATING	DOCK TYPE	GLAZING TYPE	DOCK MATERIAL	F-PAVE TYPE	HARDWARE SET	REMARKS
P4000	STORAGE	U	3-6' x 7'-0"	1	1	-	WD	F1	110	MAINTENANCE LOCK, NO LITE, NO LOUVER
P4001	WAITING TO ADMIN	U	3-6' x 7'-0"	-	1	A2.6H	WD	F1	120	OFFICE LOCK, INMARBOW UITE, NO LOUVER, SWITCHABLE GLASS
P4100A	WAITING TO CLINIC	U	3-6' x 7'-0"	-	1	A2.6H	WD	F1	120	OFFICE LOCK, INMARBOW UITE, NO LOUVER, SWITCHABLE GLASS
P4101	ELECTRICAL - EXST	ETR	ETR	ETR	ETR	ETR	ETR	ETR	220	EXISTING ELECTRICAL ROOM
P4102	CLERK CHECKIN	U	3-6' x 7'-0"	-	1	A2.6H	WD	F1	110	OFFICE LOCK, INMARBOW UITE, NO LOUVER, SWITCHABLE GLASS
P4102A	CLERK CHECKIN	U	3-6' x 7'-0"	-	1	A2.6H	WD	F1	110	OFFICE LOCK, INMARBOW UITE, NO LOUVER, SWITCHABLE GLASS
P4103	CLERK CHECKIN	U	3-6' x 7'-0"	-	1	A2.6H	WD	F1	90	OFFICE LOCK, INMARBOW UITE, NO LOUVER, SWITCHABLE GLASS
P4104	CLERKS OFFICE	U	3-6' x 7'-0"	-	1	A2.6H	WD	F1	90	OFFICE LOCK, INMARBOW UITE, NO LOUVER, SWITCHABLE GLASS
P4105	CLERKS OFFICE	U	3-6' x 7'-0"	-	1	A2.6H	WD	F1	90	OFFICE LOCK, INMARBOW UITE, NO LOUVER, SWITCHABLE GLASS
P4106	OFFICE CONSULT	U	3-6' x 7'-0"	-	1	A2.6H	WD	F1	60	OFFICE LOCK, INMARBOW UITE, NO LOUVER, SWITCHABLE GLASS
P4107	OFFICE SHOTS CLINIC	U	3-6' x 7'-0"	-	1	A2.6H	WD	F1	90	PASS, OFFICE LOCK, INMARBOW UITE, NO LOUVER, SWITCHABLE GLASS
P4107	OFFICE CONSULT	U	3-6' x 7'-0"	-	1	A2.6H	WD	F1	90	OFFICE LOCK, INMARBOW UITE, NO LOUVER, SWITCHABLE GLASS
P4108	OFFICE CONSULT	U	3-6' x 7'-0"	-	1	A2.6H	WD	F1	90	OFFICE LOCK, INMARBOW UITE, NO LOUVER, SWITCHABLE GLASS
P4109	OFFICE CONSULT	U	3-6' x 7'-0"	-	1	A2.6H	WD	F1	90	OFFICE LOCK, INMARBOW UITE, NO LOUVER, SWITCHABLE GLASS
P4110	OFFICE CONSULT	U	3-6' x 7'-0"	-	1	A2.6H	WD	F1	90	OFFICE LOCK, INMARBOW UITE, NO LOUVER, SWITCHABLE GLASS
P4111	OFFICE CONSULT	U	3-6' x 7'-0"	-	1	A2.6H	WD	F1	90	OFFICE LOCK, INMARBOW UITE, NO LOUVER, SWITCHABLE GLASS
P4112	SLIPPIES	S	3-0' x 7'-0"	-	1	-	WD	F1	160	MAINTENANCE LOCK, NO LITE
P4113	STAFF TOLL	S	3-0' x 7'-0"	-	1	-	WD	F1	70	MAINTENANCE LOCK, NO LITE
P4114	OFFICE CONSULT	U	3-6' x 7'-0"	-	1	A2.6H	WD	F1	90	OFFICE LOCK, INMARBOW UITE, NO LOUVER, SWITCHABLE GLASS
P4115	RN CONSULT	U	3-6' x 7'-0"	-	1	A2.6H	WD	F1	90	OFFICE LOCK, INMARBOW UITE, NO LOUVER, SWITCHABLE GLASS
P4116	RN CONSULT	U	3-6' x 7'-0"	-	1	A2.6H	WD	F1	90	OFFICE LOCK, INMARBOW UITE, NO LOUVER, SWITCHABLE GLASS
P4117	RN CONSULT	U	3-6' x 7'-0"	-	1	A2.6H	WD	F1	90	OFFICE LOCK, INMARBOW UITE, NO LOUVER, SWITCHABLE GLASS
P4118	GROUP ROOM	U	3-6' x 7'-0"	-	1	-	WD	F1	130	EMERGENCY RELEASE HARDWARE FOR ACCESS
P4118A	GROUP ROOM	U	3-6' x 7'-0"	-	1	-	WD	F1	130	EMERGENCY RELEASE HARDWARE FOR ACCESS
P4119	OFFICE CONSULT	U	3-6' x 7'-0"	-	1	A2.6H	WD	F1	90	OFFICE LOCK, INMARBOW UITE, NO LOUVER, SWITCHABLE GLASS
P4120	PATIENT TOLLET	U	3-6' x 7'-0"	-	1	-	WD	F1	80	EMERGENCY RELEASE HARDWARE FOR ACCESS
P4121	PATIENT TOLLET	U	3-6' x 7'-0"	-	1	A2.6H	WD	F1	90	OFFICE LOCK, INMARBOW UITE, NO LOUVER, SWITCHABLE GLASS
P4122	PATIENT TOLLET	U	3-6' x 7'-0"	-	1	-	WD	F1	80	EMERGENCY RELEASE HARDWARE FOR ACCESS
P4123	PATIENT TOLLET	U	3-6' x 7'-0"	-	1	A2.6H	WD	F1	90	OFFICE LOCK, INMARBOW UITE, NO LOUVER, SWITCHABLE GLASS
P4124	PATIENT TOLLET	U	3-6' x 7'-0"	-	1	-	WD	F1	80	EMERGENCY RELEASE HARDWARE FOR ACCESS
P4125	OFFICE CONSULT	U	3-6' x 7'-0"	-	1	A2.6H	WD	F1	90	OFFICE LOCK, INMARBOW UITE, NO LOUVER, SWITCHABLE GLASS
P4126	GROUP ROOM	U	3-6' x 7'-0"	-	1	-	WD	F1	130	EMERGENCY RELEASE HARDWARE FOR ACCESS
P4126A	GROUP ROOM	U	3-6' x 7'-0"	-	1	-	WD	F1	130	EMERGENCY RELEASE HARDWARE FOR ACCESS
P4128	GROUP ROOM	U	3-6' x 7'-0"	-	1	-	WD	F1	13	EMERGENCY RELEASE HARDWARE FOR ACCESS
P4128A	SLIPPIES	EO	(PR) 2-6' x 7'-0"	-	1	-	WD	F1	190	MAINTENANCE LOCK, NO LITE
P4130	TOLLIT - EXST	ETR	ETR	ETR	ETR	ETR	ETR	ETR	220	EXISTING TOLLIT ROOM
P4201	OFFICE INTERN	U	3-6' x 7'-0"	-	1	A2.6H	WD	F1	90	OFFICE LOCK, INMARBOW UITE, NO LOUVER, SWITCHABLE GLASS
P4202	CLERK	S	3-0' x 7'-0"	-	1	A2.6H	WD	F1	90	OFFICE LOCK, INMARBOW UITE, NO LOUVER, SWITCHABLE GLASS
P4203	OFFICE INTERN	U	3-6' x 7'-0"	-	1	A2.6H	WD	F1	90	OFFICE LOCK, INMARBOW UITE, NO LOUVER, SWITCHABLE GLASS
P4204	OFFICE INTERN	U	3-6' x 7'-0"	-	1	A2.6H	WD	F1	90	OFFICE LOCK, INMARBOW U

PAC10	OFFICE-PSI	S	3'-0" x 7'-0"	-	1	A2.6.H	WD	F1	9.0	OFFICE LOCK, NARROW/LITE, NO LOUVER, SWITCHABLE GLASS
PAC11	OFFICE-HP	U	3'-6" x 7'-0"	-	1	A2.6.H	WD	F1	9.0	OFFICE LOCK, NARROW/LITE, NO LOUVER, SWITCHABLE GLASS
PAC12	OFFICE-CONSULT	U	3'-6" x 7'-0"	-	1	A2.6.H	WD	F1	9.0	OFFICE LOCK, NARROW/LITE, NO LOUVER, SWITCHABLE GLASS
PAC13	OFFICE-CONSULT	S	3'-0" x 7'-0"	-	1	A2.6.H	WD	F1	10.0	OFFICE LOCK, NARROW/LITE, NO LOUVER, SWITCHABLE GLASS
PAC14	OFFICE-CONSULT	U	3'-6" x 7'-0"	-	1	A2.6.H	WD	F1	10.0	OFFICE LOCK, NARROW/LITE, NO LOUVER, SWITCHABLE GLASS
PAC1	CORRIDOR-ENTRY TO DEPARTMENT	UU	(PB) 3'-6" x 7'-0"	2	9	F.2.10C.	WD	F2	2.0	SMOKE COMPARTMENT/PACS CONTROLLED DOOR/HOLD OPEN
PAC3	CORRIDOR-NEURO ENTRY	U	3'-6" x 7'-0"	-	31	T.2.13	WD	1W1	15.0	CONTROLLED/INTERGRAL LOUVERS IN GLASS
PAC4	CORRIDOR-SERVICE	U	3'-6" x 7'-0"	-	1	-	WD	F1	17.0	
PAC4A	CORRIDOR-SERVICE	U	3'-6" x 7'-0"	-	1	-	WD	F1	17.0	
PAC4B	HOUSEKEEPING	ETR	ETR	ETR	ETR	ETR	ETR	ETR	22.0	
PAC6	CORRIDOR-PORCH	S (W/F)	3'-0" x 8'-0" (W/F)	-	46	SEU 2.8.B.1 w/ BR.2.B.1	AL (W/F)	ETR	1.0	CONTROLLED ACCESS VIA KEY
PAC7	CORRIDOR-PORCH	S (W/F)	3'-0" x 8'-0" (W/F)	-	46	SEU 2.8.B.1 w/ BR.2.B.1	AL (W/F)	ETR	1.0	CONTROLLED ACCESS VIA KEY
PAC9	CORRIDOR-NEURO ENTRY	U	3'-6" x 7'-0"	-	3	T.2.13	WD	F1	18.0	CONTROLLED/INTERGRAL LOUVERS IN GLASS
PAC9	CORRIDOR-PSID	U	3'-6" x 7'-0"	-	31	T.2.13	WD	1W1	15.0	CONTROLLED/INTERGRAL LOUVERS IN GLASS
PAC11	CORRIDOR-PSID/EXIT	U	3'-6" x 7'-0"	-	3	T.2.13	WD	F1	18.0	CONTROLLED/INTERGRAL LOUVERS IN GLASS
PAC12	CORRIDOR-SUITE AREA/EXIT	UU	(PB) 3'-6" x 7'-0"	-	45	T.2.13	WD	F2	3.0	CONTROLLED/INTERGRAL LOUVERS IN GLASS
PAC13	CORRIDOR-STAIR	S (W/F)	ETR	ETR	ETR	-	ETR	ETR	21.0	ADD PACS CONTROLLED HARDWARE TO STAIR SIDE
PAC16	CORRIDOR-PORCH	S (W/F)	3'-0" x 8'-0" (W/F)	-	46	SEU 2.8.B.1 w/ BR.2.B.1	AL (W/F)	ETR	1.0	CONTROLLED ACCESS VIA KEY
PAC21	CORRIDOR-PORCH	S (W/F)	3'-0" x 8'-0" (W/F)	-	46	SEU 2.8.B.1 w/ BR.2.B.1	AL (W/F)	ETR	1.0	CONTROLLED ACCESS VIA KEY
PAC21A	CORRIDOR-PORCH	S (W/F)	3'-0" x 8'-0" (W/F)	-	46	SEU 2.8.B.1 w/ BR.2.B.1	AL (W/F)	ETR	1.0	CONTROLLED ACCESS VIA KEY
PAC5	CORRIDOR-PORCH	S (W/F)	3'-0" x 8'-0" (W/F)	-	46	SEU 2.8.B.1 w/ BR.2.B.1	AL (W/F)	ETR	1.0	CONTROLLED ACCESS VIA KEY
PAC6	CORRIDOR	W1	3'-8" x 7'-0"	90 MIN	1	-	WD	F2	4	NO LITE
PAC6	CORRIDOR	U	3'-6" x 7'-0"	90 MIN	1	-	WD	F2	4	NO LITE



ARCHITECT/ENGINEERS:  Atriox, plc 10000 Old Highway, NE PO Box 14290, Hickory, NC 28603 Phone: 828.315.8962 Fax: 828.315.8964 www.atrioxgroup.com NC Engineering License No. P-0214 NC Architectural License No. 57254	
Drawing Title ARCHITECTURAL SCHEDULES: DOOR & WINDOW	Project Title RENOVATE P-SIDE FOR SUPER POD PHASE 2
Approved Project Director _____	Location JH OULLEN VAMC MTN. HOME TN
Date DECEMBER 21, 2015	Checked TAA
Date DECEMBER 21, 2015	Drawn TAA
Drawing Number AE602	Project Number 621-S-120 Building Number 160
 Department of Veterans Affairs	