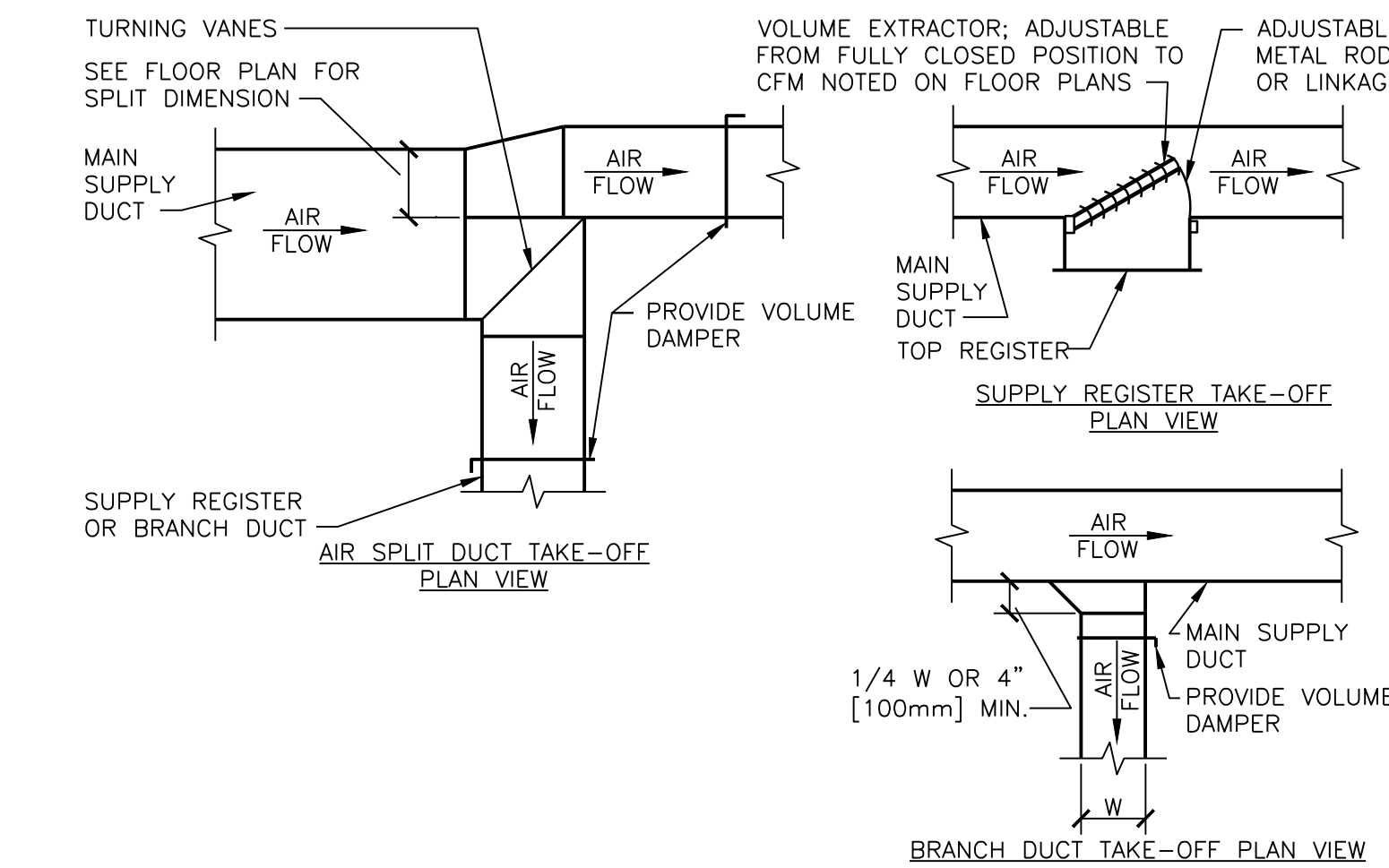


NOTES

1. COMBINATION FIRE SMOKE DAMPER TO BE U.L. LABELED AND INSTALLED PER MANUFACTURER'S RECOMMENDATION FOR U.L. LABEL.
2. PROVIDE ACCESS DOOR IN DUCT FOR FUSIBLE LINK REPLACEMENT.
3. DO NOT FASTEN ANGLE TO WALL.
4. MOUNT DAMPER OPERATOR OUTSIDE OF WALL ON DAMPER SLEEVE.

13 COMBINATION FIRE/SMOKE DAMPER

NTS

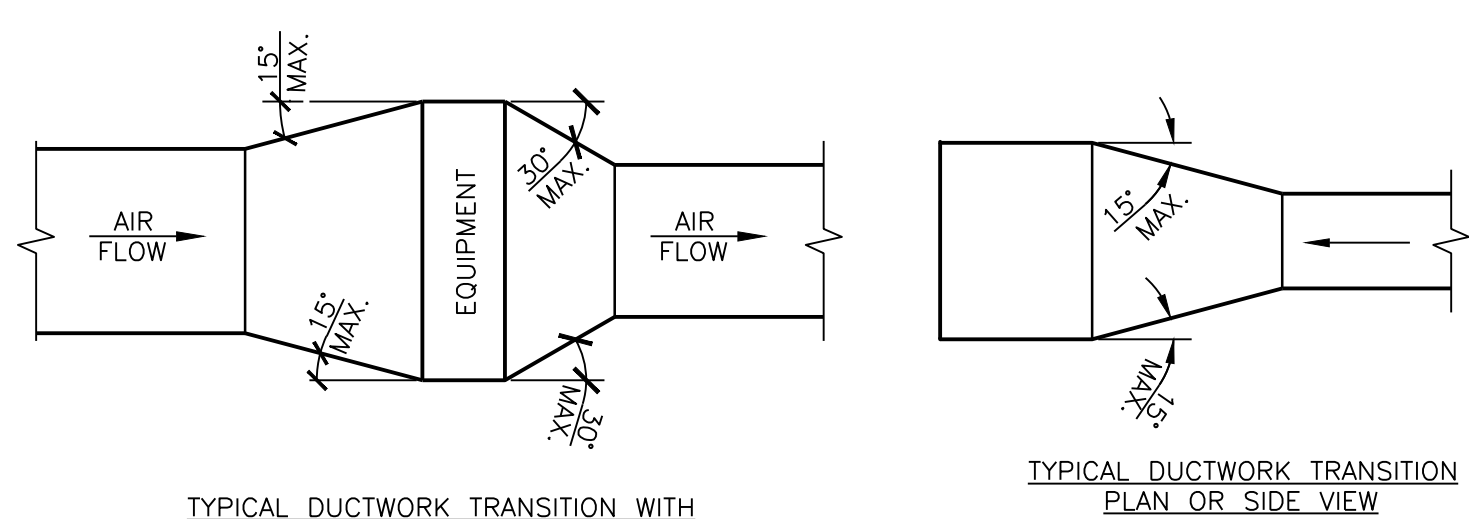


12 SUPPLY DUCTWORK TAKE-OFFS

NTS

DESIGNER'S NOTES:

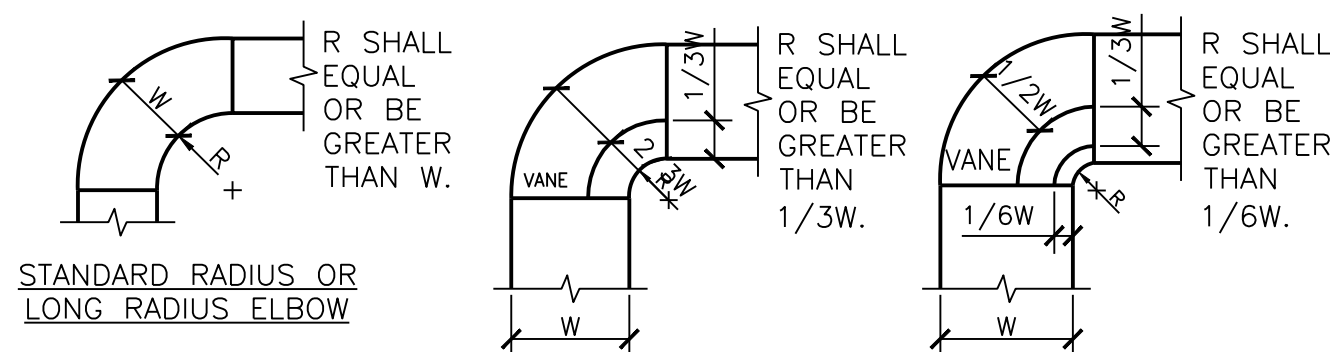
1. THE SUPPLY REGISTER TAKE-OFF MAY BE USED FOR UP TO 25% OF THE MAIN DUCT CFM. THE BRANCH DUCT TAKE-OFF MAY BE USED FOR UP TO 15% OF THE MAIN DUCT CFM ANYTIME AND UP TO 40% WHEN THE MAIN DUCT VELOCITY IS 1000 FPM [5.1 M/S] OR LESS. THE AIR SPLIT DUCT TAKE-OFF SHALL BE USED IN ALL OTHER CASES AND MAY BE USED AT ANYTIME.
2. SHOW ALL VOLUME DAMPERS ON FLOOR PLANS.



NOTE: UNLESS OTHERWISE INDICATED ON PLANS, MAXIMUM ANGLES SHOWN SHALL APPLY.

11 DUCTWORK TRANSITIONS (WITH EQUIPMENT MOUNTED IN DUCT)

NTS

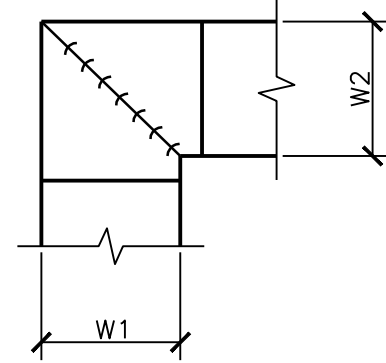


NOTE:

1. THE INTERIOR SURFACE OF ALL RADIUS ELBOWS SHALL BE MADE ROUND.
2. ALL STANDARD RADIUS ELBOWS CAN BE SUBSTITUTED WITH SHORT RADIUS ELBOWS. ALL SHORT RADIUS ELBOWS SHALL HAVE VANES. VANES SHALL BE CONSTRUCTED, SUPPORTED AND FASTENED AS RECOMMENDED BY SMACNA.

10 DUCTWORK RADIUS ELBOWS

NTS

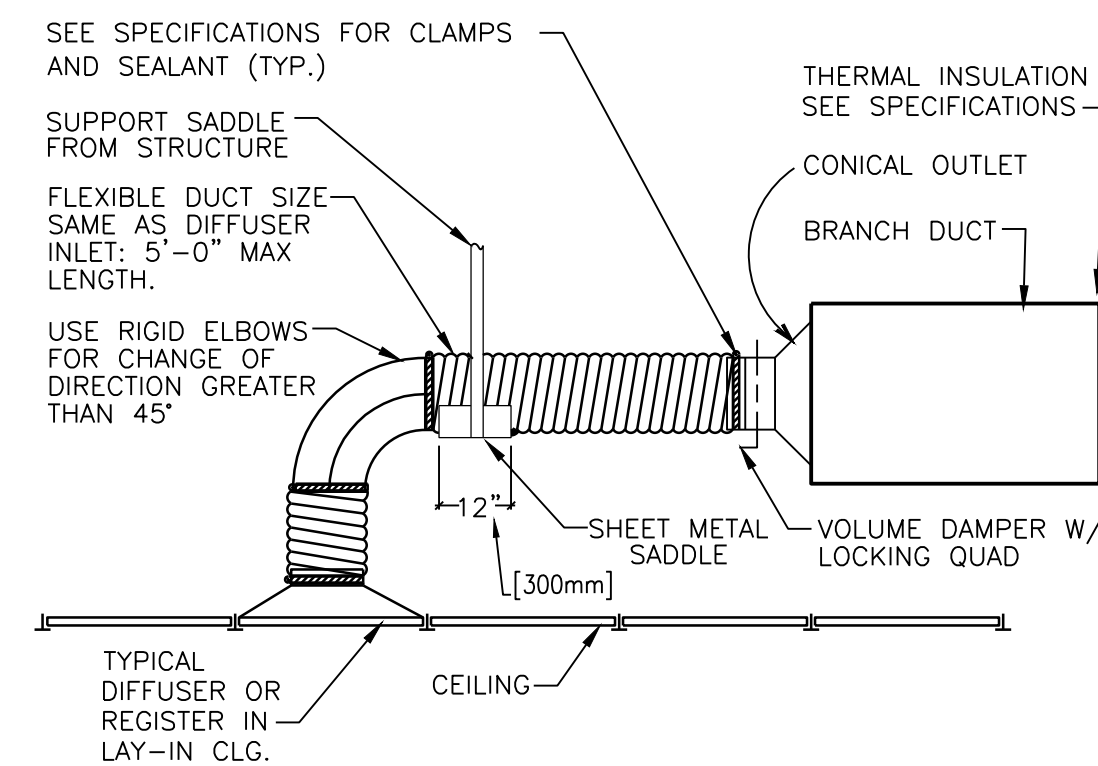


NOTE:

1. ALL VANE ELBOWS SHALL BE CONSTRUCTED AND INSTALLED AS DETAILED BY SMACNA.
2. WHEN W1 DOES NOT EQUAL W2, VANE SHALL BE SINGLE THICKNESS VANE TYPE REGARDLESS OF W DIMENSION.
3. ALL SINGLE THICKNESS VANES SHALL HAVE A 2" [50mm] RADIUS, 1 1/2" [40mm] MAXIMUM SPACE BETWEEN VANES AND A 3/4" [20mm] TRAILING EDGE.
4. WHEN W EQUALS W2 AND W1 IS GREATER THAN 20" [500mm] VANES SHALL BE DOUBLE VANE TYPE.

9 DUCTWORK SQUARE VANE ELBOWS

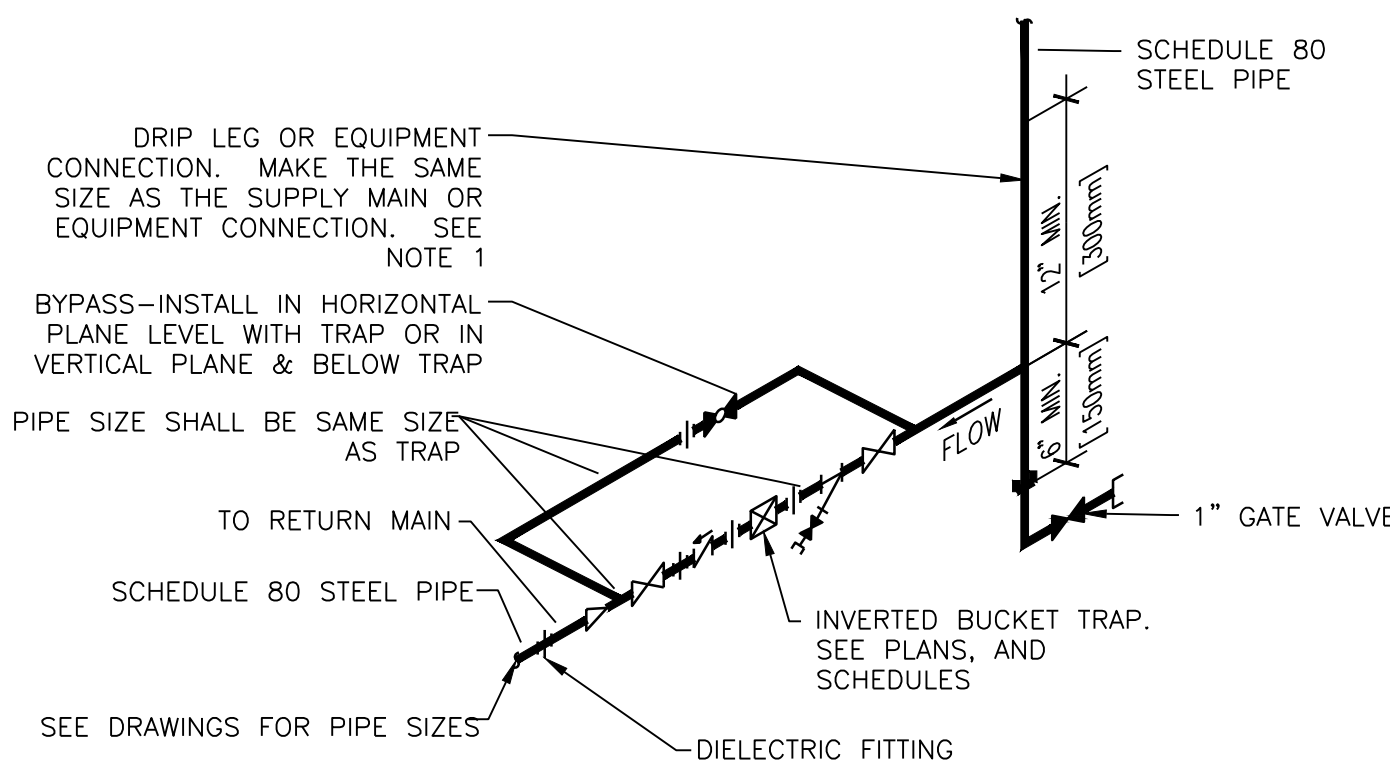
NTS



NOTE: THE USE OF FLEXIBLE AIR DUCT CONNECTORS ARE NOT PERMITTED FOR THE DEDICATED AHU SERVING THE SURGICAL SUITE.

8 FLEXIBLE AIR DUCT CONNECTOR

NTS

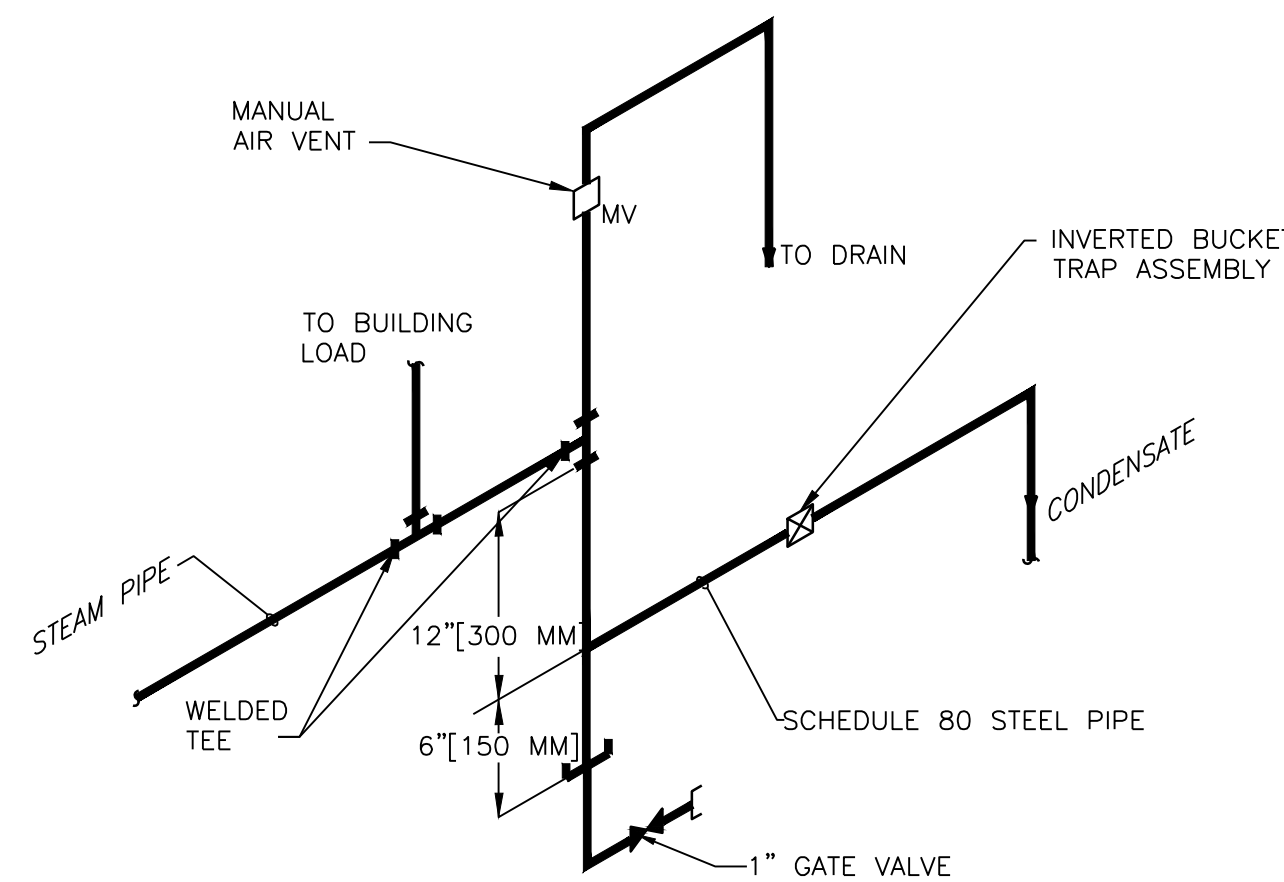


NOTE:

1. ALL DRIP POINTS ON STEAM MAINS SHALL BE PROVIDED WITH A 12" MINIMUM HIGH DRIP LEG FROM BOTTOM OF STEAM MAIN TO TRAP INLET. DRIP LEG SHALL HAVE 6" SCALE POCKET BELOW TRAP INLET.
2. PROVIDE BYPASS PIPING.

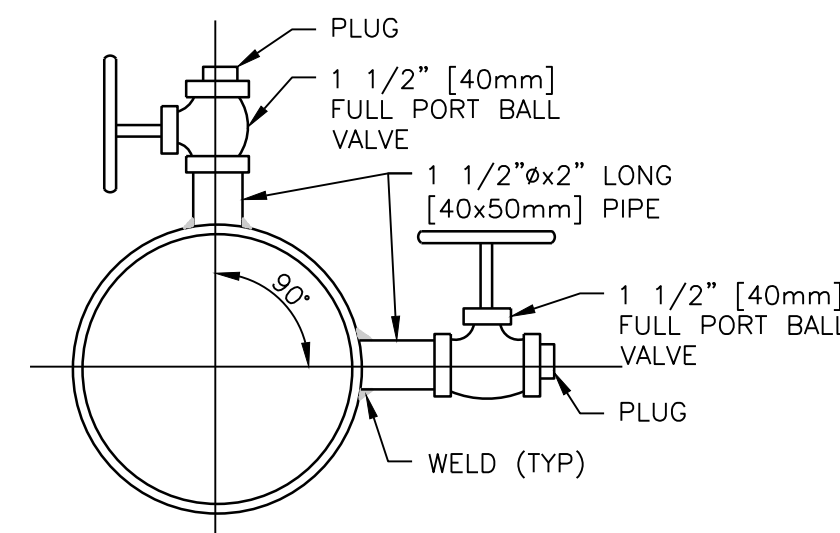
INVERTED BUCKET STEAM TRAP ASSEMBLY

1 NTS



6 END OF STEAM LINE DRIP TRAP

NTS



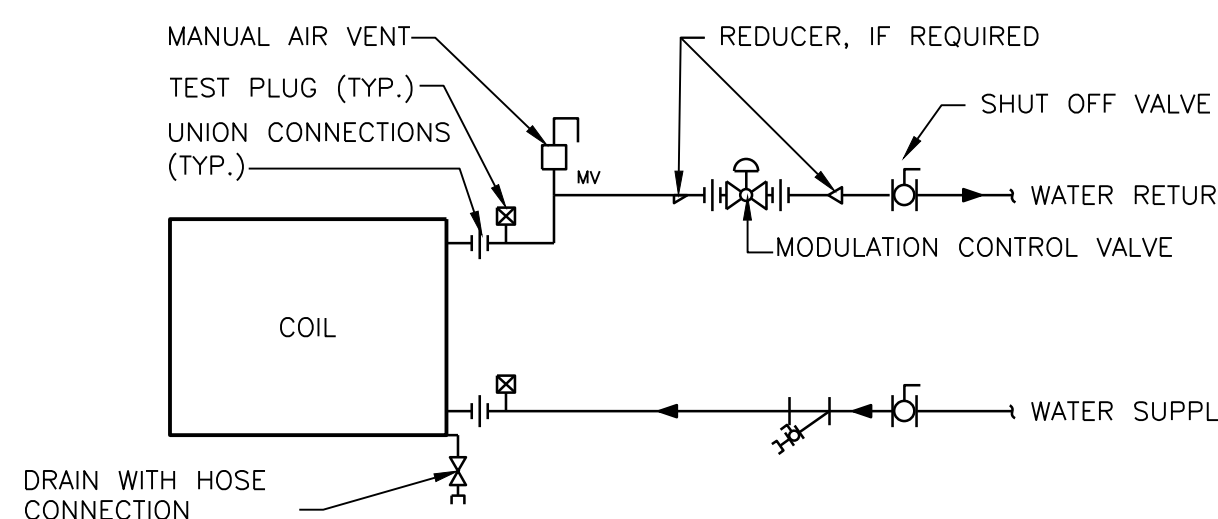
NOTE:

1. PROVIDE IN CHILLED WATER MAIN AND IN CONDENSER WATER MAIN.
2. LOCATE PILOT TUBE TAPS 20 PIPE DIAMETERS DOWNSTREAM AND 10 PIPE DIAMETERS UPSTREAM FROM THE NEAREST PIPE FITTING.

EITHER TOP OR SIDE LOCATION. BOTH ARE NOT REQUIRED AT SAME LOCATION.

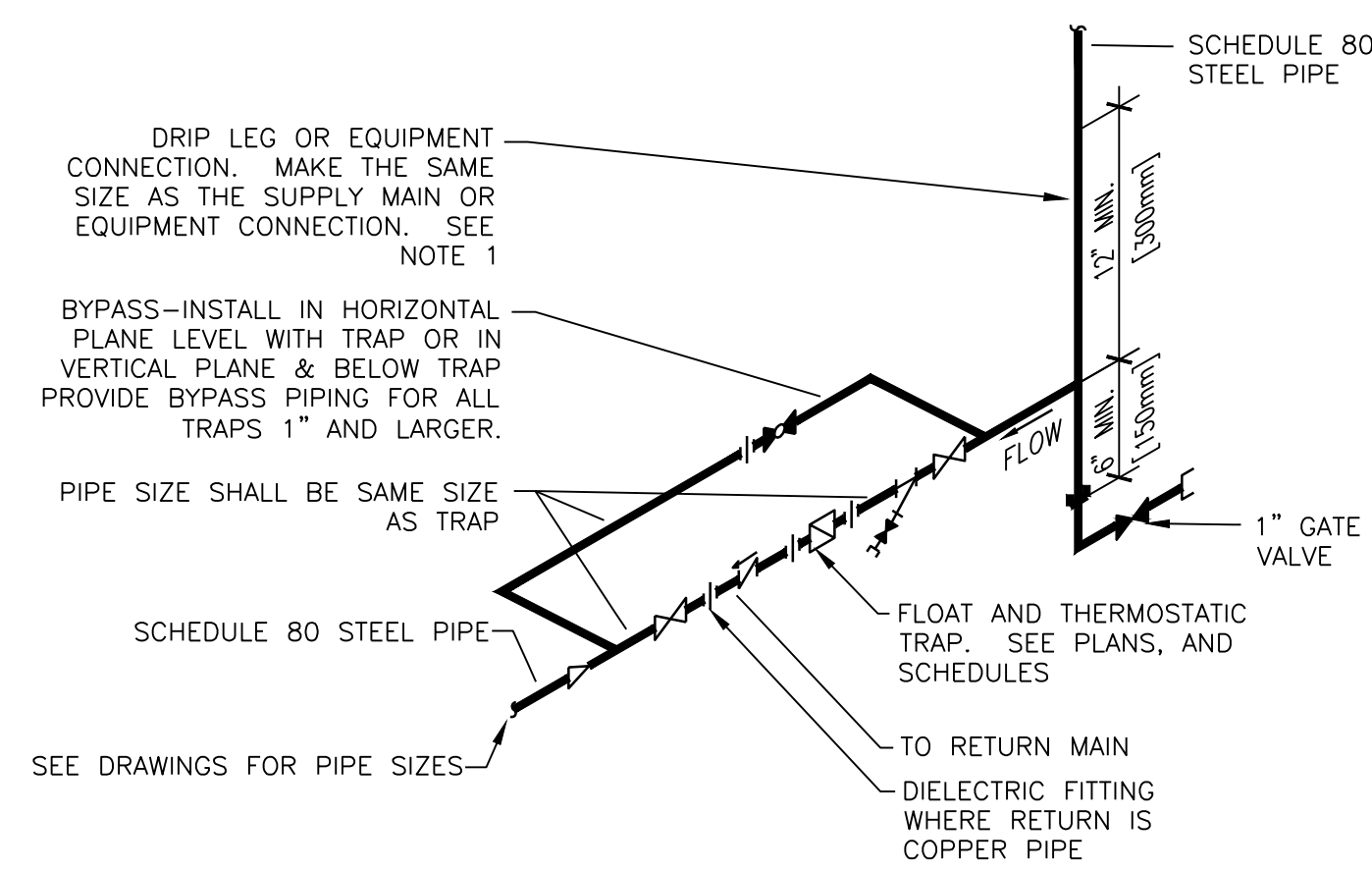
5 PITOT TEST CONNECTIONS

NTS



TERMINAL UNIT WATER COILS - PIPING CONNECTIONS

2 NTS

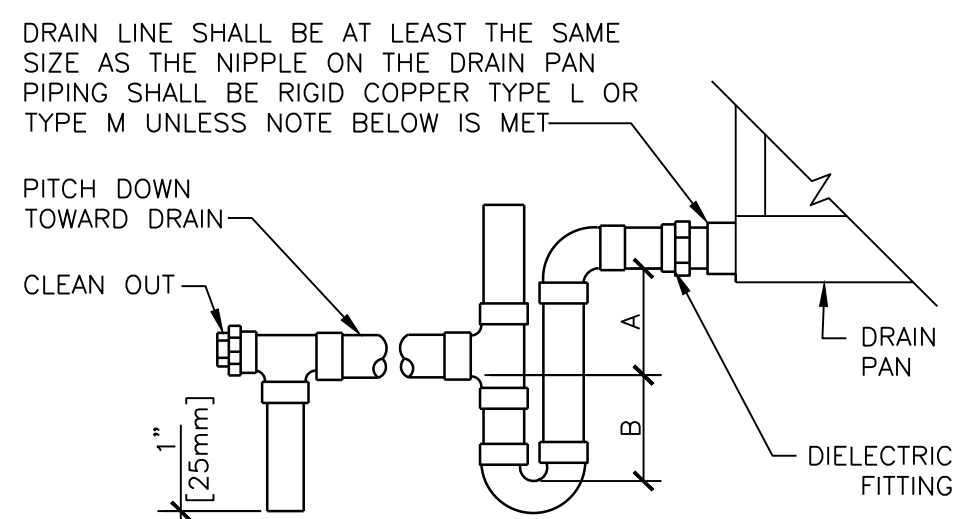


NOTE:

1. ALL DRIP POINTS ON STEAM MAINS SHALL BE PROVIDED WITH A 12" MINIMUM HIGH DRIP LEG FROM BOTTOM OF STEAM MAIN TO TRAP INLET. DRIP LEG SHALL HAVE 6" SCALE POCKET BELOW TRAP INLET.

FLOAT AND THERMOSTATIC STEAM TRAP ASSEMBLY

NTS



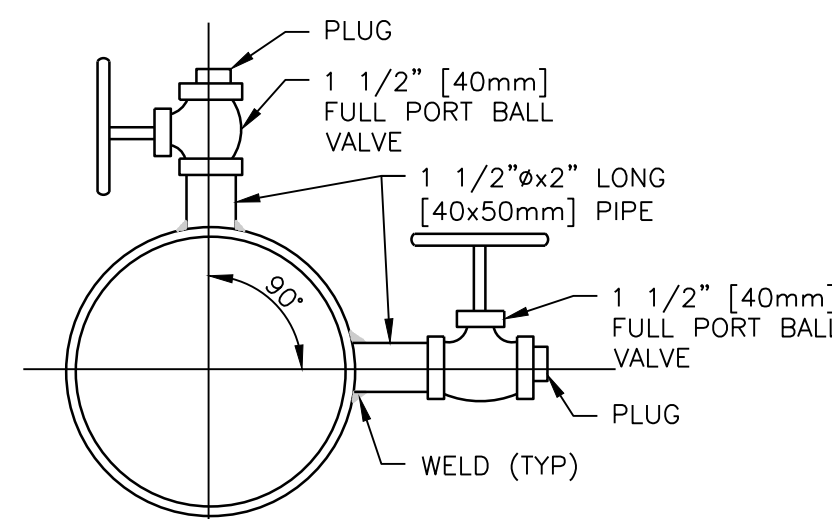
NOTE: 1. CPVC PIPE MAY BE USED ONLY IF APPROVED BY LOCAL VA AND IS INDOORS AND DOES NOT PASS THROUGH RATED BARRIERS. 2. DIELECTRIC FITTING TO BE USED WHEN TWO DISSIMILAR METALS ARE TO BE CONNECTED.

UNIT TYPE	A	B
DRAW THRU	2" [50mm] PLUS X	X
BLOW THRU	1" [25mm] MINIMUM	2X

WHERE X = STATIC PRESSURE IN PAN

2 AIR HANDLING UNIT DRAIN TRAP DETAIL

NTS



NOTE:

1. PROVIDE IN CHILLED WATER MAIN AND IN CONDENSER WATER MAIN.
2. LOCATE PILOT TUBE TAPS 20 PIPE DIAMETERS DOWNSTREAM AND 10 PIPE DIAMETERS UPSTREAM FROM THE NEAREST PIPE FITTING.

EITHER TOP OR SIDE LOCATION. BOTH ARE NOT REQUIRED AT SAME LOCATION.

1 PITOT TEST CONNECTIONS

NTS

100% FINAL CONSTRUCTION DOCUMENTS - FULLY SPRINKLERED

CONSULTANTS:		ARCHITECT/ENGINEERS:		Drawing Title MECHANICAL DETAILS	Project Title RENOVATE P-SIDE FOR SUPER POD PHASE 2	Project Number 621-15-120
FreemanWhite 8845 Red Oak Blvd. Charlotte, NC 28217-5593 Phone: 704.523.2230 Fax: 704.523.2235		LeGrand Engineering, Inc. 215 Park Ave SE Aiken, SC 29801 Phone: 803.502.0657 Fax: 803.643.4648		Approved Project Director		Building Number 160
ADDENDUM A Revisions		Atriax, pllc 102 3rd Avenue, NE PO Box 1629, Hickory, NC 28603 Phone: 828.315.9962 Fax: 828.315.9964 www.atriaxgroup.com		Location J.H. QUILLLEN VAMC MTN. HOME TN		Drawing Number M502 Dwg. 87 of 118
3/25/2016 Date		NC Engineering License No.: P-0214 NC Architectural License No.: 51254		Date DECEMBER 21, 2015		Checked AGT
				Drawn AGT		