

three inches = one foot
one and one half inches = one foot
one inch = one foot
three quarters inch = one foot
one half inch = one foot
three eighths inch = one foot
one quarter inch = one foot
one eighth inch = one foot
one eighth inch = one foot

LIGHTING CONTROL SYSTEM NOTES

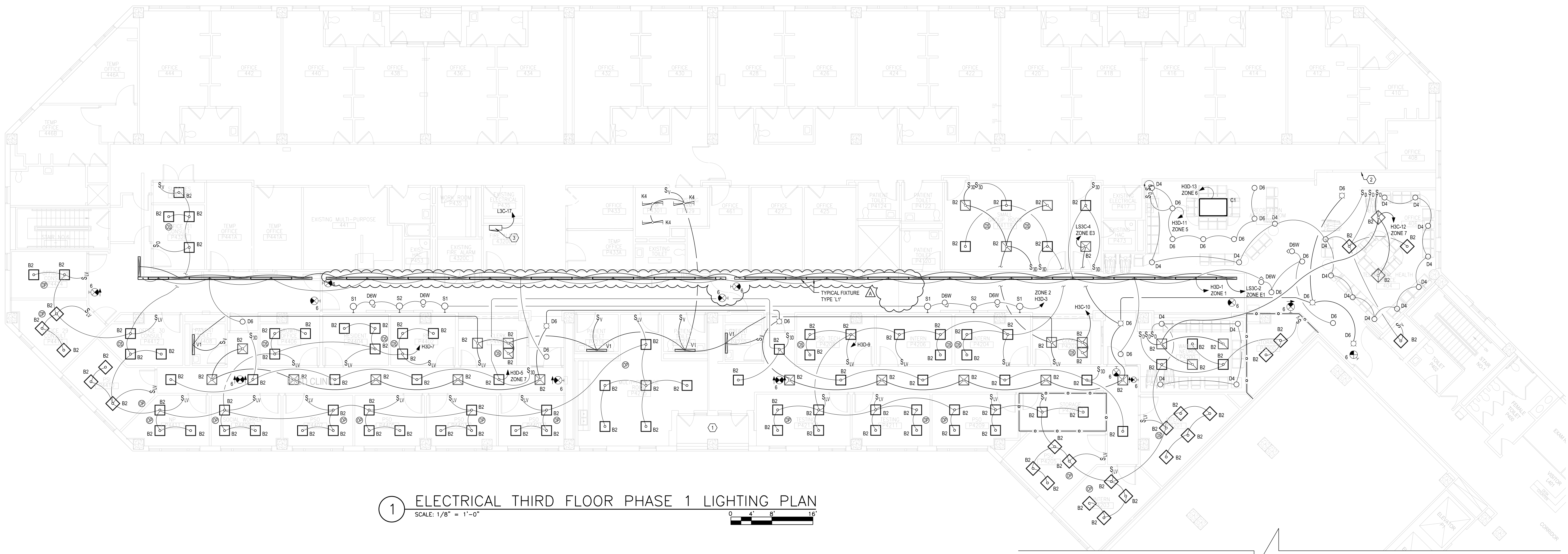
- A. BASIS OF DESIGN FOR PROGRAMMABLE LIGHTING CONTROL SYSTEM IS SENSOR SWITCH H/LIGHT WALL POD SERIES. EQUIVALENT PROGRAMMABLE LIGHTING CONTROL SYSTEMS ARE LUTRON, TOUCHE, BEG, AND WATTSTOPPER.
- B. CONTROL PANEL LCP IS THE MASTER CONTROL RELAY PANEL AND SHALL CONTAIN THE PROGRAMMING, SCHEDULING, AND THE USER INTERFACE FOR REVIEWING OR MODIFYING THE PROGRAM SCHEDULES. PANEL LCP SHALL BE PROVIDED WITH BATTERY BACK-UP, NONVOLATILE MEMORY, MANUAL OVERRIDES, ASTRONOMICAL TIME CLOCK, AND MODERN REMOTE FACTORY ACCESS. RELAYS SHALL RETURN TO THE LAST PROGRAMMED STATE IMMEDIATELY UPON THE RETURN TO THE UTILITY POWER SOURCE.
- C. NORMAL LIGHTING CONTROL ZONES ARE:
- ZONE 1 - SOUTH CORRIDOR OVERHEAD: 6:30AM 80%, 6:30PM OFF (1 RELAY)
 - ZONE 2 - SOUTH CORRIDOR SCONCES: 7:00AM 50%, 6:30PM OFF (1 RELAY)
 - ZONE 3 - NORTH CORRIDOR OVERHEAD: 6:30AM 80%, 6:30PM OFF (1 RELAY)
 - ZONE 4 - NORTH CORRIDOR SCONCES: 7:00AM 50%, 6:00PM OFF (1 RELAY)
 - ZONE 5 - WAITING ROOM OVERHEAD: 7:00AM 80%, 6:30PM OFF (2 RELAYS)
 - ZONE 6 - WAITING ROOM PENDANT: 7:00AM 100%, 6:00PM OFF (1 RELAY)
 - ZONE 7 - COMMON AREAS: 6:30AM 80%, 6:30PM OFF (4 RELAYS)
 - ZONE 8 - EXTERIOR BALCONIES: AVAILABLE DUSK TO DAWN (1 RELAY)
- D. EGRESS LIGHTING CONTROL ZONES ARE:
- ZONE E1 - SOUTH CORRIDOR EGRESS: 6:30AM 80%, 6:30PM 50% (1 RELAY)
 - ZONE E2 - NORTH CORRIDOR EGRESS: 6:30AM 80%, 6:30PM 50% (1 RELAY)
 - ZONE E3 - COMMON AREAS: 6:30AM 80%, 6:30PM 50% (2 RELAYS)
- E. PROGRAMMING AND SCHEDULING SHALL INCLUDE HOLIDAY AND WEEKEND SCHEDULE SETTINGS. COORDINATE ZONE CONTROLS, OPERATING HOURS, AND BUSINESS DAYS WITH OWNER PRIOR TO BEGINNING PROGRAMMING EFFORT.
- F. ALL RELAYS SHALL BE RATED FOR LOAD SERVED, DIMMING, AND ON/OFF CONTROL. PROVIDE AT LEAST 10% SPACE FOR ADDITIONAL FUTURE RELAYS.
- G. PROVIDE BARRIERS WITHIN LIGHTING CONTROL PANEL TO SEPARATE WIRING OF DIFFERENT VOLTAGES AND CLASSES. PROVIDE SEPARATE RELAY PANEL IF UL APPROVED BARRIER IS NOT AVAILABLE IN ORDER TO SEPARATE LIFE SAFETY EGRESS CONDUCTORS FROM NORMAL BRANCH CIRCUIT CONDUCTORS.
- H. LOW-VOLTAGE OVERRIDE CONTROLS WILL ALLOW CHANGES THROUGHOUT THE DAY, EXCEPT THE EGRESS LIGHTING WILL NOT DIM BELOW 50%. THE TEMPORARY CHANGE WILL REMAIN IN EFFECT UNTIL THE NEXT MANUAL OVERRIDE ACTIVATION OR THE NEXT SCHEDULED PROGRAM CHANGE, BUT NO LONGER THAN TWO HOURS.
- I. PROVIDE GRAPHIC PANEL OR MULTIPLE-BUTTON MOMENTARY CONTACT OVERRIDE SWITCH. EACH ZONE MAY BE CONTROLLED SEPARATELY. ALSO PROVIDE OCCUPIED AND UNOCCUPIED BUTTONS TO TOGGLE BETWEEN BUSINESS AND NON-BUSINESS LIGHTING SCHEMES. LABEL EACH BUTTON TO IDENTIFY FUNCTION AND AREA SERVED. PROVIDE COMMUNICATIONS CABLE TO CONNECT LOW-VOLTAGE SWITCHES TO LIGHTING CONTROL PANEL PANEL.
- J. PROVIDE BLINK WARNING FOR APPLICABLE INTERIOR LIGHTING RELAYS TWO MINUTES PRIOR TO SCHEDULED OFF STATE.
- K. COORDINATE CONTROL WIRING AND CONNECTION REQUIREMENTS WITH MANUFACTURER.
- L. PROVIDE DATA CONNECTION OR TELEPHONE LINE ACCESS FOR SUPPORT FROM MANUFACTURER THROUGH REMOTE ACCESS, IF OFFERED BY MANUFACTURER.
- M. PROVIDE INPUT SIGNAL CONNECTION FROM FIRE ALARM SYSTEM SO THAT WHEN FIRE ALARM SYSTEM IS ACTIVATED, ALL RELAYS WILL CLOSE (LIGHTING WILL ILLUMINATE) UNTIL ALARM IS CLEARED FROM FIRE ALARM SYSTEM OR OTHER OVERRIDE CONTROLS ARE ACTIVATED.
- N. UPON LOSS OF THE UTILITY POWER SOURCE, ALL EGRESS LIGHTING WILL ILLUMINATE AT 100% OUTPUT. THE SCHEDULED STATE WILL RESUME WHEN THE UTILITY POWER SOURCE IS RESTORED.
- O. EXTERIOR LIGHTING RELAY WILL ONLY ALLOW BALCONY LIGHTS TO OPERATE IF EXISTING 3-WAY IS ACTUATED FROM 30 MINUTES PRIOR TO SUNSET UNTIL 30 MINUTES AFTER SUNRISE. THE LIGHT WILL TURN OFF AUTOMATICALLY AFTER 90 MINUTES.

KEYED NOTES

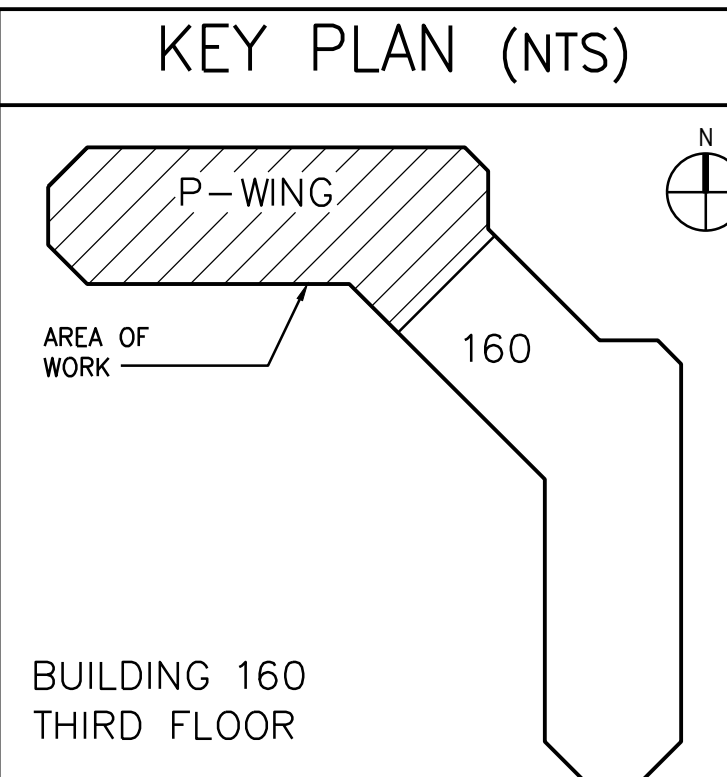
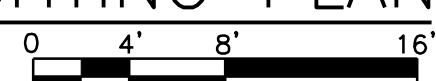
1. MAINTAIN EXISTING LUMINAIRE AND ASSOCIATED SWITCH CONTROLS AT BALCONY. CONNECT TO NEW AVAILABLE 120 VOLT CIRCUIT IF NECESSARY.
2. PROVIDE FLUSH-MOUNT PRE-PROGRAMMED LIGHTING CONTROL PANEL FOR OVERRIDE CONTROL AT TEMPORARY LOCATION INDICATED. REFER TO LIGHTING CONTROL SYSTEM NOTES ON THIS DRAWING FOR USER INTERFACE INFORMATION. CONTROLLED AREAS INCLUDE CORRIDORS AND WAITING ROOM. CONFIRM LOCATION WITH OWNER PRIOR TO ROUGH-IN AND INSTALL DURING PHASE 1.
3. PROVIDE RELAY PANELS AT LOCATION INDICATED TO SUPPORT LIGHTING CONTROL PANEL FUNCTIONS. REFER TO LIGHTING CONTROL SYSTEM NOTES ON THIS DRAWING FOR SYSTEM FUNCTION AND ZONE ASSIGNMENTS. INSTALL DURING PHASE 1.

GENERAL NOTES

- A. CONNECT EXIT SIGNS AND LIFE SAFETY LIGHTING AHEAD OF ALL SWITCHING.
- B. FOR DRAWING CLARITY, CONDUIT ROUTING IS NOT SHOWN FOR ILLUMINATED EXIT SIGNS. CONNECT EXIT SIGNS TO LIFE SAFETY BRANCH LIGHTING CIRCUIT IN PANEL LSC3-6 FOR PHASE 1 AND PHASE 1A. THE NUMBER ADJACENT TO EACH EXIT SIGN INDICATES THE CIRCUIT NUMBER.
- C. REFER TO REFLECTED CEILING PLAN FOR FINAL LIGHT LOCATIONS.
- D. REFER TO DETAIL 7 ON DRAWING EL701 FOR LIGHTING CONTROL SCHEME INFORMATION WITHIN INDIVIDUAL OFFICES AND SIMILAR ROOMS. EACH OFFICE CONTAINS STAND-ALONE CONTROLS AND INCLUDES VACANCY SENSOR FOR AUTOMATIC OFF FUNCTION.
- E. REFER TO DETAIL 8 ON DRAWING EL701 FOR LIGHTING CONTROL SCHEME INFORMATION WITHIN GROUP ROOMS AND MULTI-PURPOSE ROOMS. EACH ROOM CONTAINS STAND-ALONE CONTROLS AND INCLUDES VACANCY SENSORS FOR AUTOMATIC OFF FUNCTION.



1 ELECTRICAL THIRD FLOOR PHASE 1 LIGHTING PLAN
SCALE: 1/8" = 1'-0"



100% FINAL CONSTRUCTION DOCUMENTS - FULLY SPRINKLERED

		CONSULTANTS:				ARCHITECT/ENGINEERS:		Drawing Title		Project Title		Project Number		Office of Construction and Facilities Management	
								ELECTRICAL THIRD FLOOR PHASE 1 LIGHTING PLAN		RENOVATE P-SIDE FOR SUPER POD PHASE 2		621-15-120			
		FreemanWhite		LeGrand Engineering, Inc.		Atriax GROUP		Approved Project Director		Location		Drawing Number			
		8845 Red Oak Blvd. Charlotte, NC 28217-5593 Phone: 704.523.2230 Fax: 704.523.2235		215 Park Ave SE Aiken, SC 29801 Phone: 803.502.0657 Fax: 803.643.4648		www.atriaxgroup.com		J.H. QUILLLEN VAMC		MTN. HOME TN		EL101			
ADDENDUM A		3/25/16						Date		Checked		Drawn			
Revisions		Date						DECEMBER 21, 2015		RJM		SUB		Dwg. 98 of 118	
														 Department of Veterans Affairs	