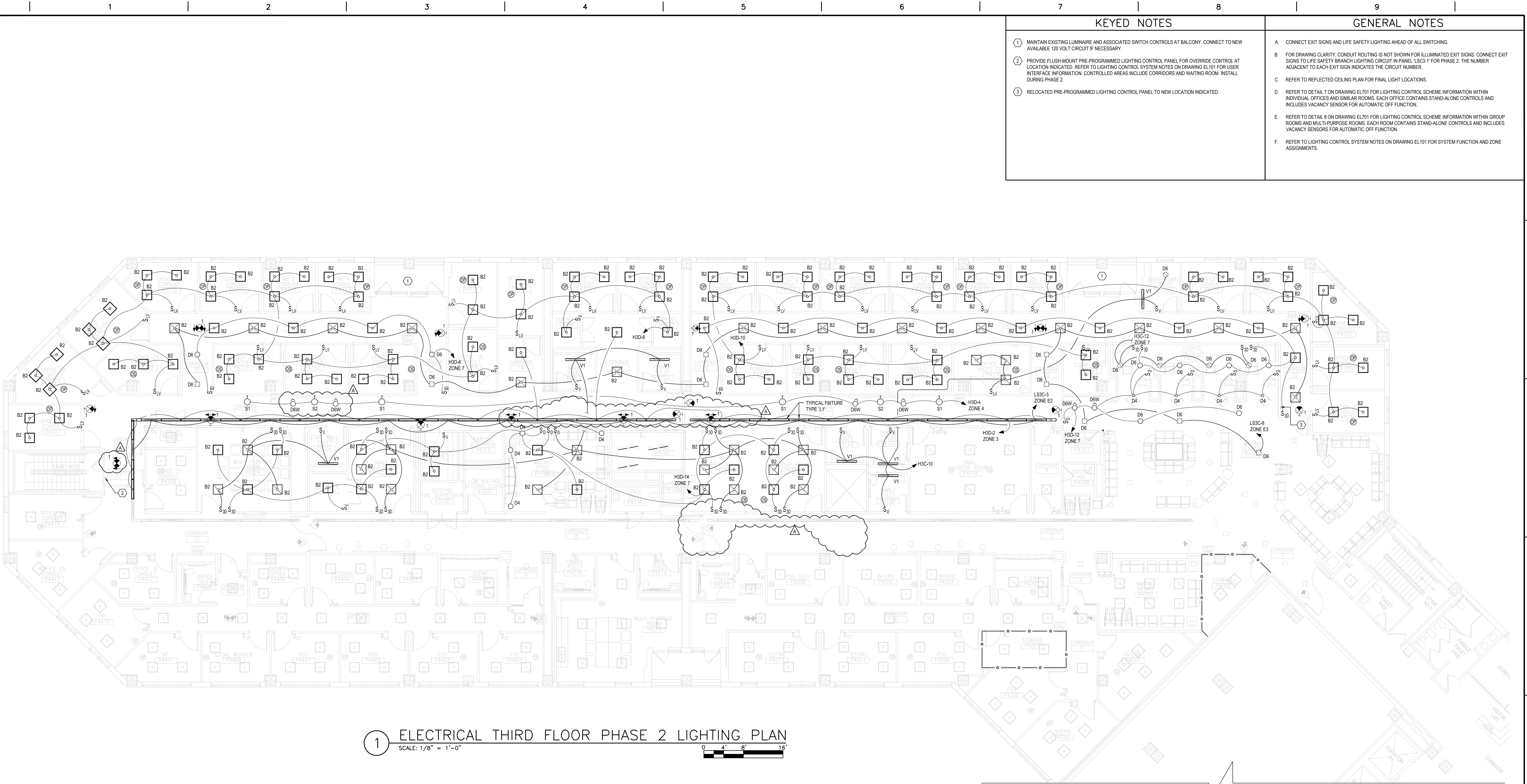






three inches = one foot  
one and one half inches = one foot  
one inch = one foot  
three quarters inch = one foot  
one half inch = one foot  
three eighths inch = one foot  
one quarter inch = one foot  
one eighth inch = one foot



1 ELECTRICAL THIRD FLOOR PHASE 2 LIGHTING PLAN  
SCALE: 1/8" = 1'-0"

KEYED NOTES	GENERAL NOTES
<p>1 MAINTAIN EXISTING LUMINAIRE AND ASSOCIATED SWITCH CONTROLS AT BALCONY. CONNECT TO NEW AVAILABLE 120 VOLT CIRCUIT IF NECESSARY.</p> <p>2 PROVIDE FLUSH-MOUNT PRE-PROGRAMMED LIGHTING CONTROL PANEL FOR OVERRIDE CONTROL AT LOCATION INDICATED. REFER TO LIGHTING CONTROL SYSTEM NOTES ON DRAWING EL101 FOR USER INTERFACE INFORMATION. CONTROLLED AREAS INCLUDE CORRIDORS AND WAITING ROOM. INSTALL DURING PHASE 2.</p> <p>3 RELOCATED PRE-PROGRAMMED LIGHTING CONTROL PANEL TO NEW LOCATION INDICATED.</p>	<p>A. CONNECT EXIT SIGNS AND LIFE SAFETY LIGHTING AHEAD OF ALL SWITCHING.</p> <p>B. FOR DRAWING CLARITY, CONDUIT ROUTING IS NOT SHOWN FOR ILLUMINATED EXIT SIGNS. CONNECT EXIT SIGNS TO LIFE SAFETY BRANCH LIGHTING CIRCUIT IN PANEL LSC3-1 FOR PHASE 2. THE NUMBER ADJACENT TO EACH EXIT SIGN INDICATES THE CIRCUIT NUMBER.</p> <p>C. REFER TO REFLECTED CEILING PLAN FOR FINAL LIGHT LOCATIONS.</p> <p>D. REFER TO DETAIL 7 ON DRAWING EL701 FOR LIGHTING CONTROL SCHEME INFORMATION WITHIN INDIVIDUAL OFFICES AND SIMILAR ROOMS. EACH OFFICE CONTAINS STAND-ALONE CONTROLS AND INCLUDES VACANCY SENSOR FOR AUTOMATIC OFF FUNCTION.</p> <p>E. REFER TO DETAIL 8 ON DRAWING EL701 FOR LIGHTING CONTROL SCHEME INFORMATION WITHIN GROUP ROOMS AND MULTI-PURPOSE ROOMS. EACH ROOM CONTAINS STAND-ALONE CONTROLS AND INCLUDES VACANCY SENSORS FOR AUTOMATIC OFF FUNCTION.</p> <p>F. REFER TO LIGHTING CONTROL SYSTEM NOTES ON DRAWING EL101 FOR SYSTEM FUNCTION AND ZONE ASSIGNMENTS.</p>

		CONSULTANTS:				ARCHITECT/ENGINEERS:		Drawing Title		Project Title		Project Number		Office of Construction and Facilities Management	
		<div> FreemanWhite 8845 Red Oak Blvd. Charlotte, NC 28217-5593 Phone: 704.523.2230 Fax: 704.523.2235</div> <div> LeGrand Engineering, Inc. 215 Park Ave SE Aiken, SC 29801 Phone: 803.502.0657 Fax: 803.643.4648</div>		<div></div>		<div> www.atriaxgroup.com</div> <div>Atriax, pllc 102 3rd Avenue, NE PO Box 1629, Hickory, NC 28603 Phone: 828.315.9962 Fax: 828.315.9964 NC Engineering License No.: P-0214 NC Architectural License No.: 51254</div>		ELECTRICAL THIRD FLOOR PHASE 2 LIGHTING PLAN		RENOVATE P-SIDE FOR SUPER POD PHASE 2		621-15-120 Building Number 160			
ADDENDUM A								Approved Project Director		Location J.H. QUILLLEN VAMC MTN. HOME TN		Drawing Number		EL102 Dwg. 99 of 118	
Revisions		Date								Date DECEMBER 21, 2015		Checked RJM			

100% FINAL CONSTRUCTION DOCUMENTS - FULLY SPRINKLERED