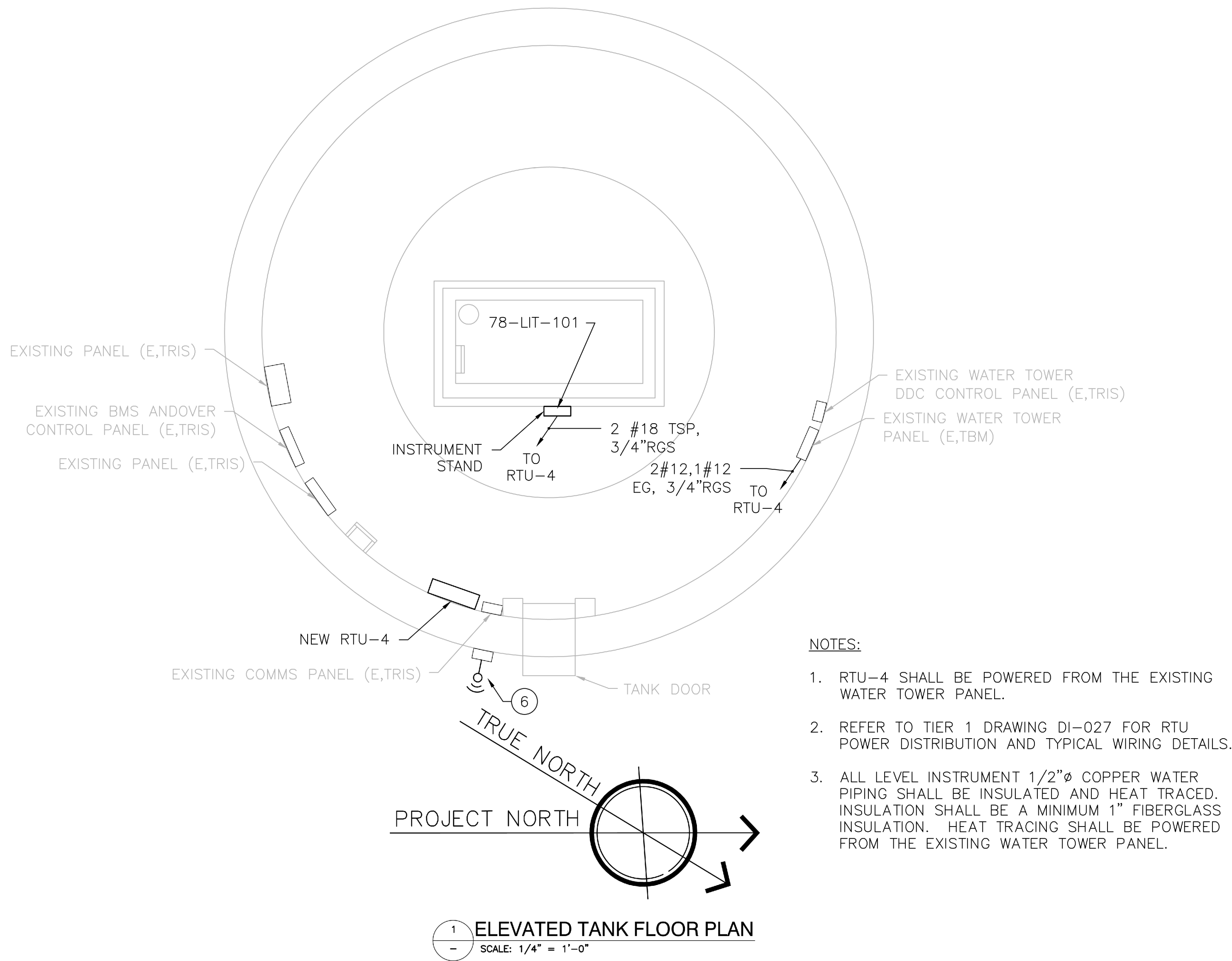
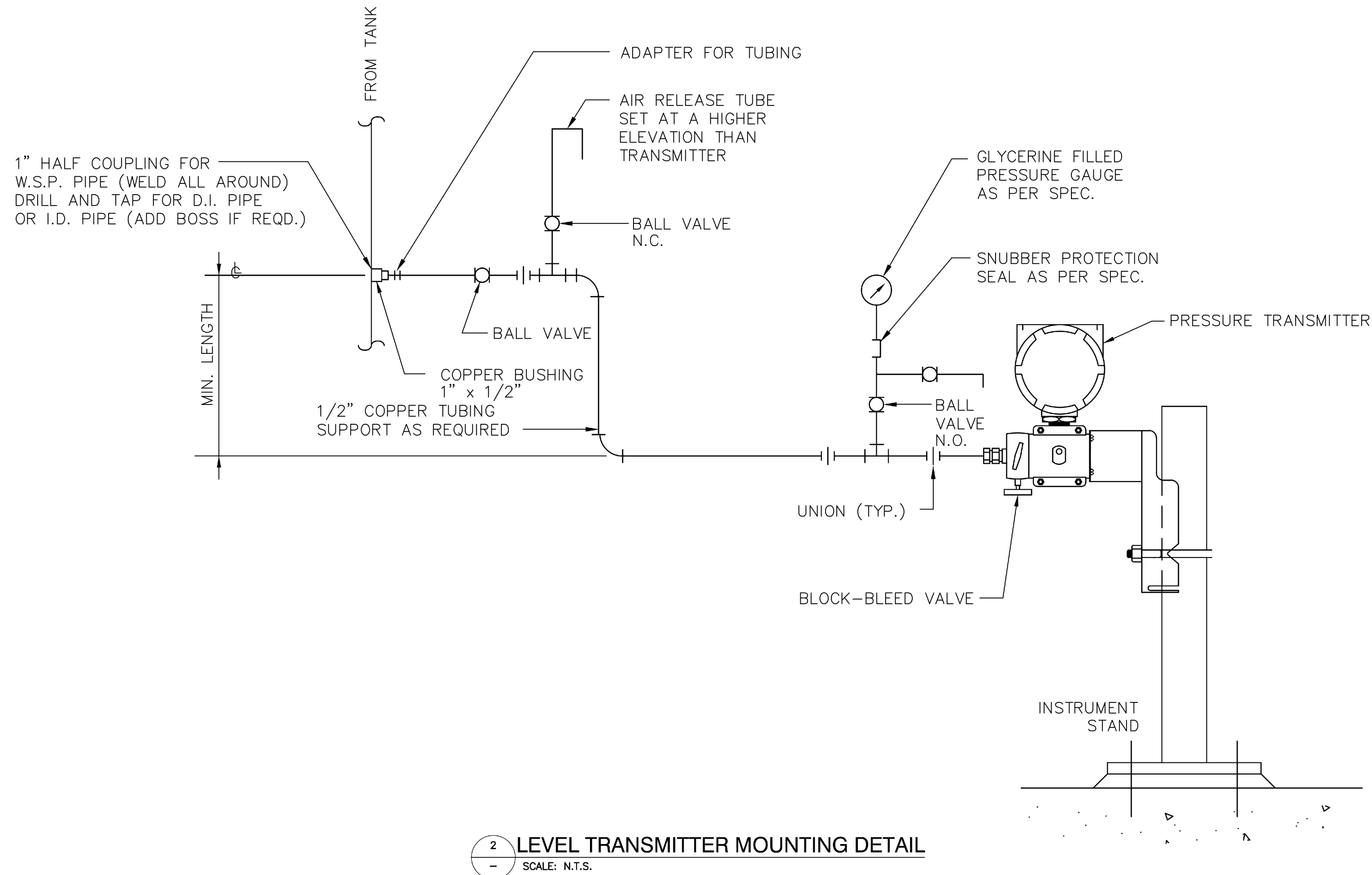


three inches = one foot
one and one half inch = one foot
one inch = one foot
three-quarters inch = one foot
one-half inch = one foot
three-eighths inch = one foot
one-quarter inch = one foot
one-eighth inch = one foot



NOTES:

1. RTU-4 SHALL BE POWERED FROM THE EXISTING WATER TOWER PANEL.
2. REFER TO TIER 1 DRAWING DI-027 FOR RTU POWER DISTRIBUTION AND TYPICAL WIRING DETAILS.
3. ALL LEVEL INSTRUMENT 1/2"Ø COPPER WATER PIPING SHALL BE INSULATED AND HEAT TRACED. INSULATION SHALL BE A MINIMUM 1" FIBERGLASS INSULATION. HEAT TRACING SHALL BE POWERED FROM THE EXISTING WATER TOWER PANEL.



PROFESSIONAL CERTIFICATION
I HEREBY CERTIFY THAT THESE DOCUMENTS WERE PREPARED OR
APPROVED BY ME, AND THAT I AM A DULY LICENSED PROFESSIONAL
ENGINEER UNDER THE LAWS OF THE STATE OF MARYLAND.
LICENSE NO. 21333, EXPIRATION DATE: 09/05/16



Approved:

Approved: Chief, Facilities and Engineering:

Approved: Associate Chief for Maintenance And Operations, Perry Point:

Approved: Engineering Projects Supervisor

Approved: Infection Control Officer

Drawing Title:

ELEVATED TANK
AND RTU LAYOUT

Approved: Associate Director for Operations:

Approved: Director, Medical Center:

Project Title:

POTABLE WATER
SYSTEM IMPROVEMENTS - TIER 4
PERRY POINT MD
VAMC

Scale:

AS NOTED

Building No:

N/A

Checked:

DRH

Drawn:

RRU

Location:

VAMC PERRY POINT, MD 21902

Date:

9/1/2015

Project No:

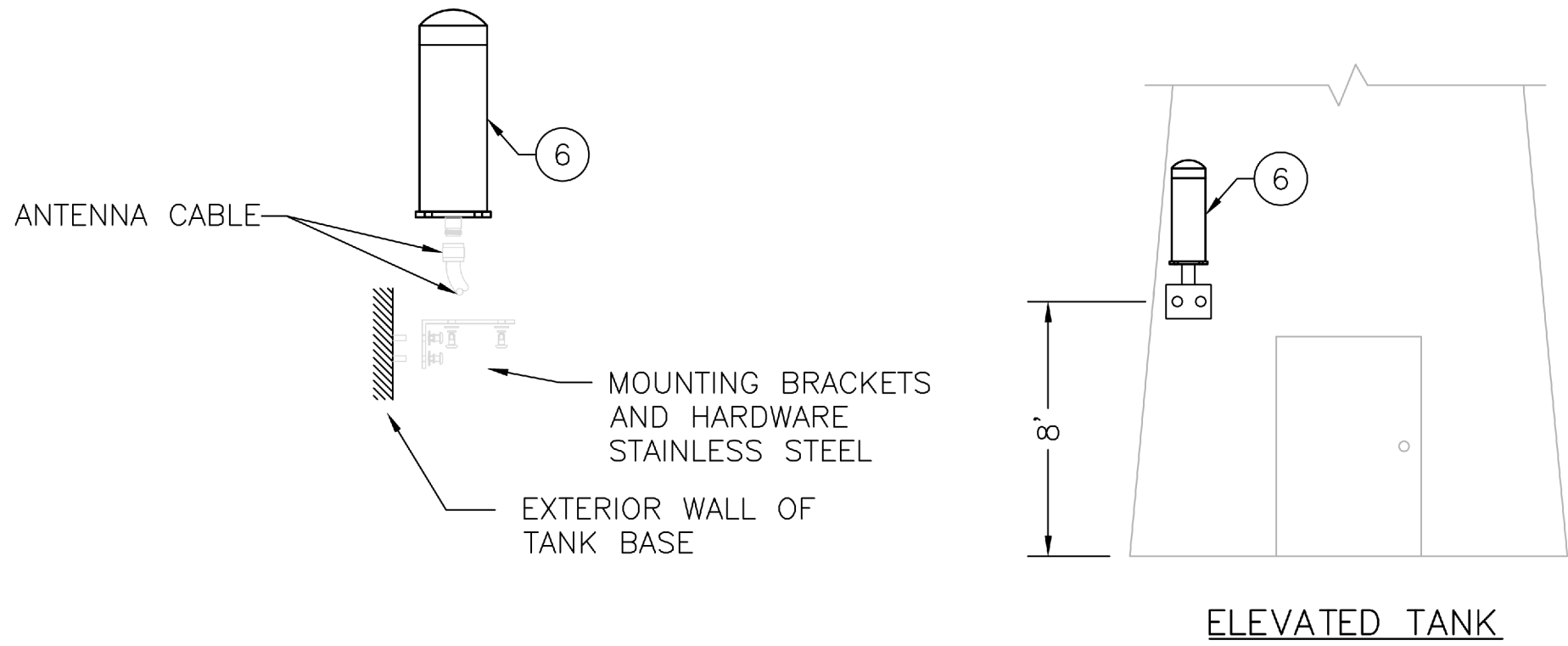
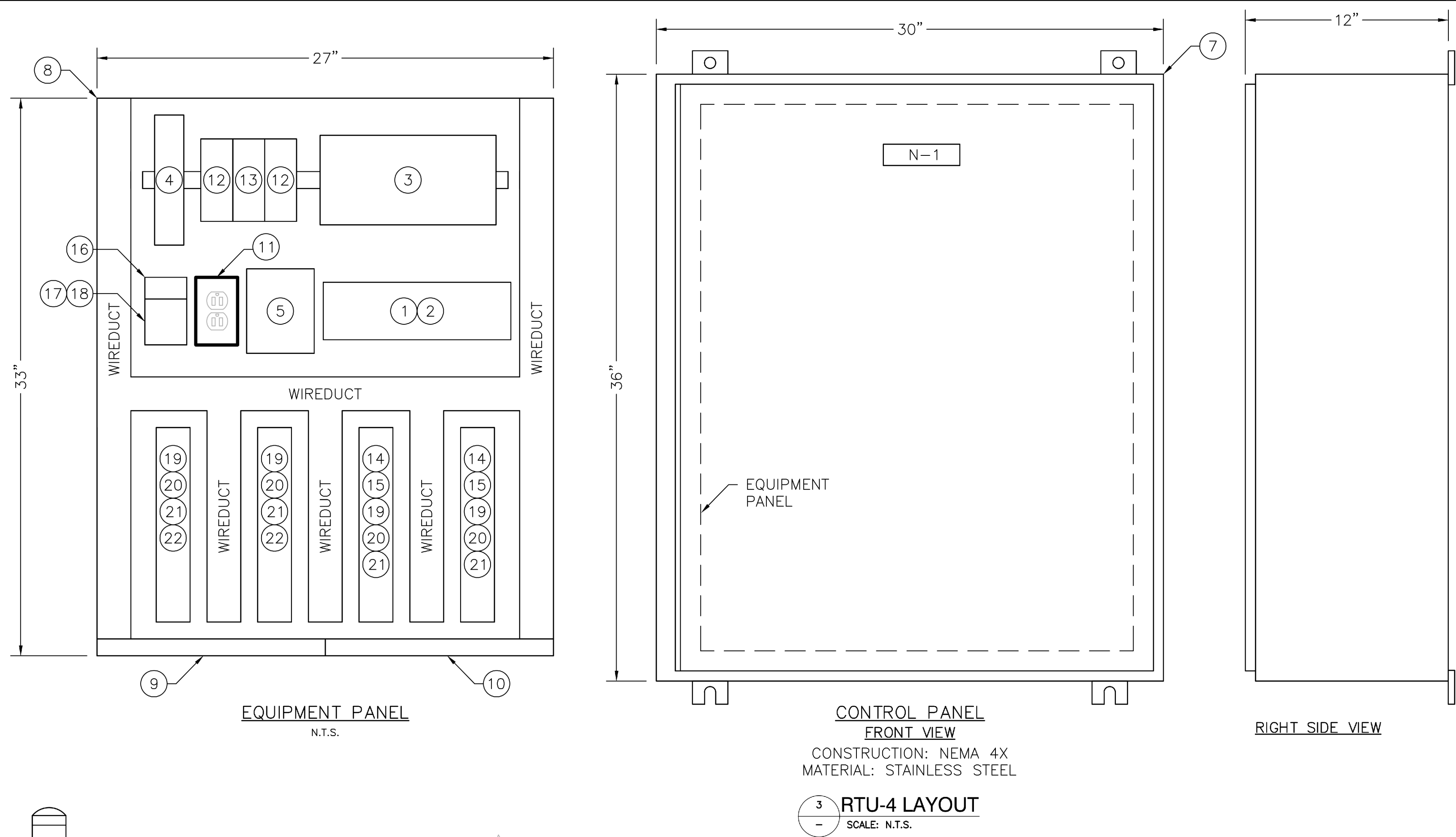
512A5-13-329

DRAWING NO:

DI-001

2 OF 2

100% Bid Documents September 1, 2015



EQUIPMENT IDENTIFICATION LIST

ITEM #	QTY	DESCRIPTION	MANUFACTURER	MODEL NUMBER
1		PLC PROCESSOR, COMPACT-LOGIX	ALLEN-BRADLEY	1769-*
2		PLC POWER SUPPLY - COMPACT-LOGIX	ALLEN-BRADLEY	1769-*
3		UNINTERRUPTIBLE POWER SUPPLY - 500VA	SOLA-HEVI/DUTY	SDU-850
4		SECURITY APPLIANCE WITH INTELLIGENT FIREWALL/ROUTER	CISCO	C819HG
5		INDUSTRIAL WIRELESS CELLULAR MODEM, (4G XLTE VERIZON)	SIERRA WIRELESS	AIRLINK GX-450
6		CELLULAR MODEM ANTENNA	CELLMATE	CM288
7		ELECTRICAL ENCLOSURE, 36" H x 30" W x 12" D, 316L S.S.	HOFFMAN	A36H3012SS6LP3PT
8		EQUIPMENT PANEL, 33" H x 27" W, PAINTED STEEL	HOFFMAN	A36P30
9		EQUIPMENT GROUND BUS, 1" X 1/4" COPPER, 16" LONG	ALLEN-BRADLEY	
10		ISOLATED GROUND BUS, 1" X 1/4" COPPER, 16" LONG	ALLEN-BRADLEY	
11		UTILITY RECEPTACLE, GFCI, DUPLEX, 15 AMP	ALLEN-BRADLEY	
12		24 VDC POWER SUPPLY, 10 AMP, DIN RAIL MOUNT	SOLA-HEVI/DUTY	*
13		24 VDC REDUNDANCY MODULE	SOLA-HEVI/DUTY	*
14		CONTROL RELAY, GENERAL PURPOSE, 120 VAC COIL	ALLEN-BRADLEY	700HA
15		CONTROL RELAY, GENERAL PURPOSE, 24 VDC COIL	ALLEN-BRADLEY	700HA
16		POWER DISTRIBUTION LUG	ALLEN-BRADLEY	1492-PDL3141
17		CIRCUIT BREAKER, 15 AMP	ALLEN-BRADLEY	
18		CIRCUIT BREAKER, 10 AMP	ALLEN-BRADLEY	
19		FUSIBLE SWITCH BLOCK WITH BLOWN FUSE IND	ALLEN-BRADLEY	1492-H4
20		FUSE, GLASS, 5 X 20 MM, 1/10 AMP	ALLEN-BRADLEY	
21		FUSE, GLASS, 5 X 20 MM, 1 AMP	ALLEN-BRADLEY	
22		TERMINAL BLOCKS, SINGLE CIRCUIT	ALLEN-BRADLEY	1492-W4
23		7" COLOR TOUCHSCREEN	ALLEN-BRADLEY	PANELVIEW PLUS 700

RTU NAMEPLATE ENGRAVING PLATE				
N-#	LINE 1	LINE 2	LINE 3	SIZE
N-1	ELEVATED TANK	CONTROL PANEL	RTU-004	1" X 4"

* REFER TO SPECIFICATIONS