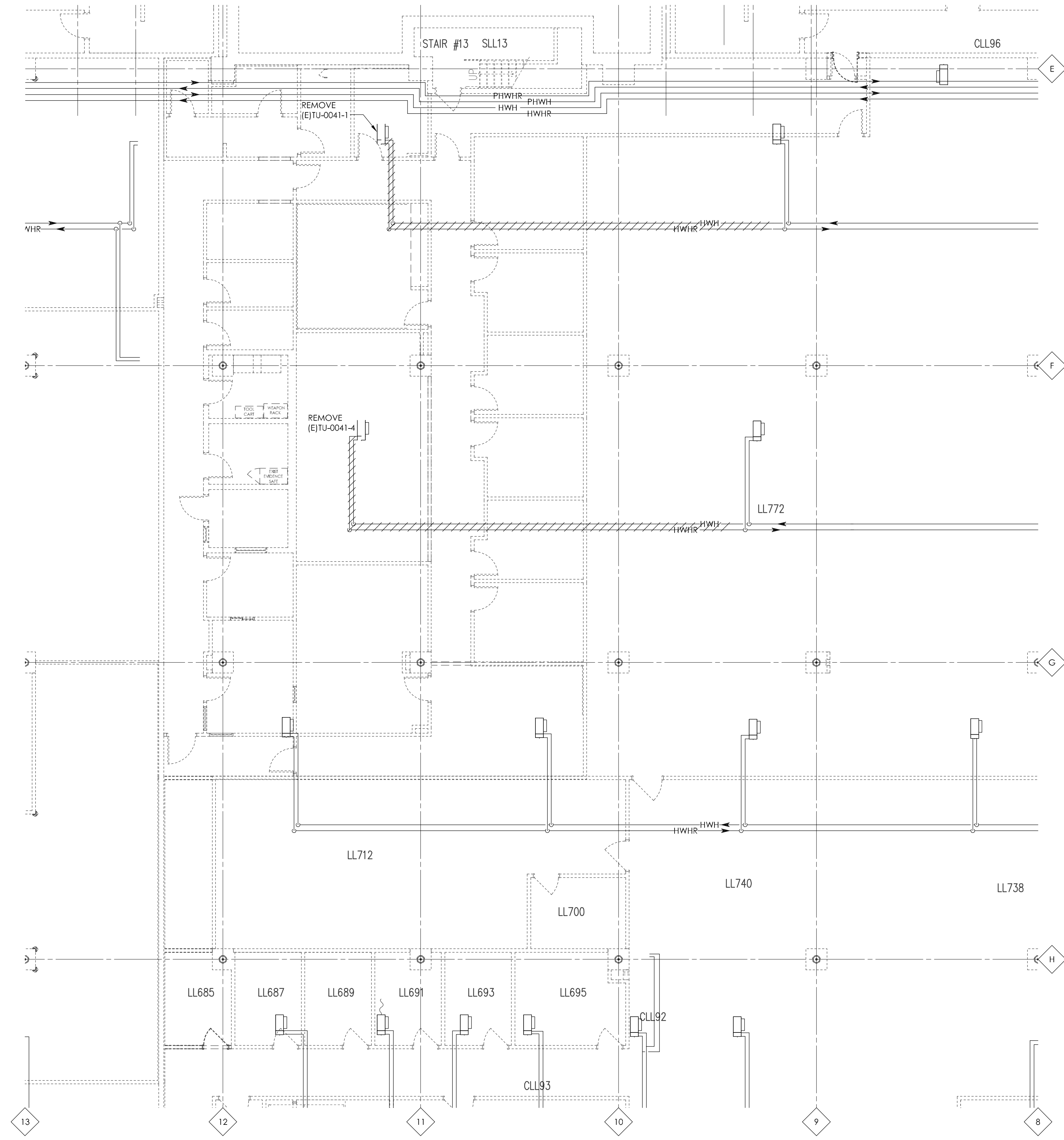
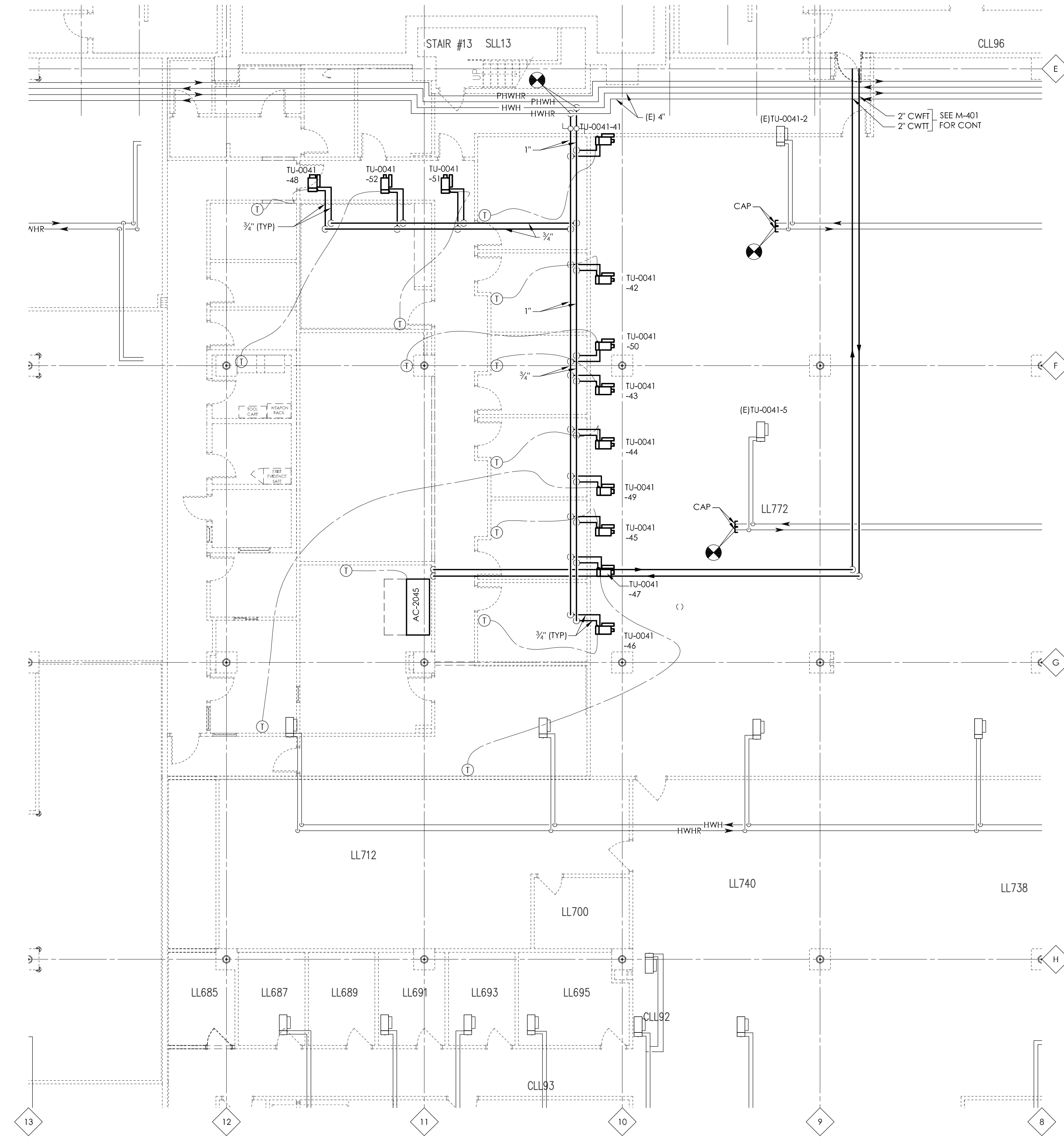


A
three inches = one foot
1
0
6
B
one and one half inches = one foot
1
0
6
2
C
one inch = one foot
1
0
6
D
three quarters inch = one foot
2
0
6
E
one half inch = one foot
1
0
6
F
three eighths inch = one foot
4
0
6
one quarter inch = one foot
8
0
6
one eighth inch = one foot
16
0
6



ENLARGED PLAN
PIPING - DEMOLITION
1/8" = 1'-0"

- NOTES:
1. FOR EXISTING ELEMENTS TO REMAIN NOT LABELED HERE, REFER TO DET-VAMC SHEET H6-L-7 FOR SIZES AND EQUIPMENT DESIGNATIONS.
 2. REFER TO SHEET M-001 FOR DEMOLITION NOTES.

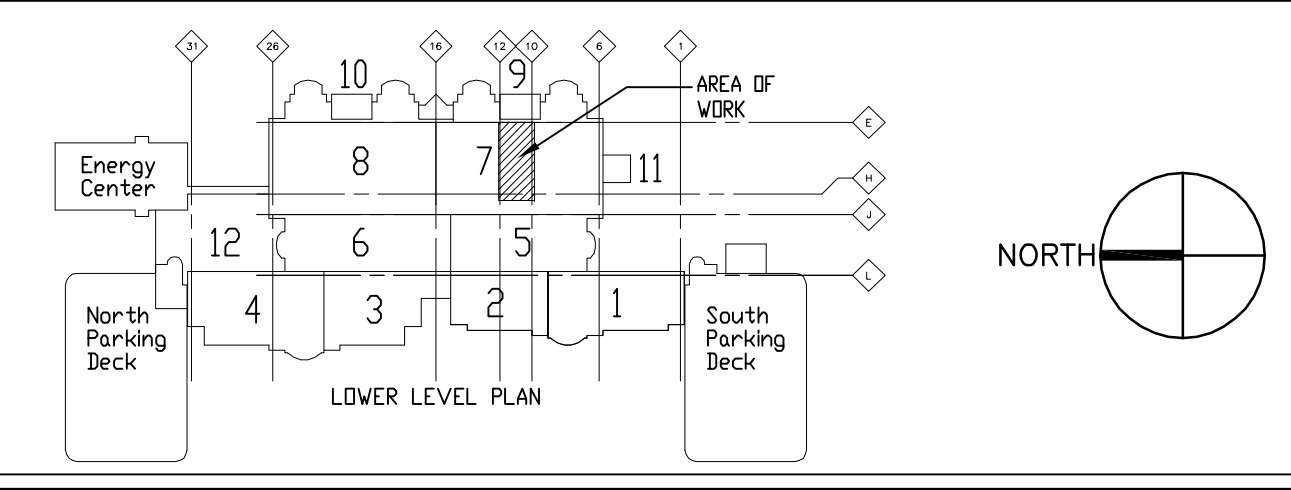


ENLARGED PLAN
PIPING
1/8" = 1'-0"

- NOTES:
1. FOR EXISTING ELEMENTS TO REMAIN NOT LABELED HERE, REFER TO DET-VAMC SHEET H6-L-7 FOR SIZES AND EQUIPMENT DESIGNATIONS.
 2. REFER TO SHEET M-001 FOR GENERAL NOTES.
 3. REFER TO DET-VAMC SHEET M0-5 FOR INTERSECT ZONING.

Revisions	Date
ISSUE 006 - CD BID	01.20.11
ISSUE 005 - CD OWNER REVIEW	12.17.10
ISSUE 004 - DESIGN DEVELOPMENT RECORD	11.12.10
ISSUE 003 - DESIGN DEVELOPMENT REVIEW	09.08.10

KEY PLAN



US DEPARTMENT OF
VETERANS AFFAIRS
JOHN D. DINGELL
VA MEDICAL CENTER
4646 JOHN R. STREET
DETROIT, MI 48202

ARCHITECT/ENGINEERS:



Albert Kahn Associates, Inc.
Albert Kahn Building
7430 Second Ave.
Detroit, Michigan 48202-2798
Albert Kahn Associates, Inc. is a member of
the Albert Kahn Family of Companies.
ALBERT KAHN JOB # 0388-00.000 © 2007

Drawing Title
**ENLARGED PLANS -
PIPING**

Approved Project Director
J. P. COLE

Project Title
POLICE SERVICES RELOCATION

Location
DETROIT, MICHIGAN

Project Number
553-11-108

Building Number
100

Drawing Number
MP-400
Dwg. 27 of 50

Office of
Construction
and Facilities
Management

FULLY SPRINKLERED