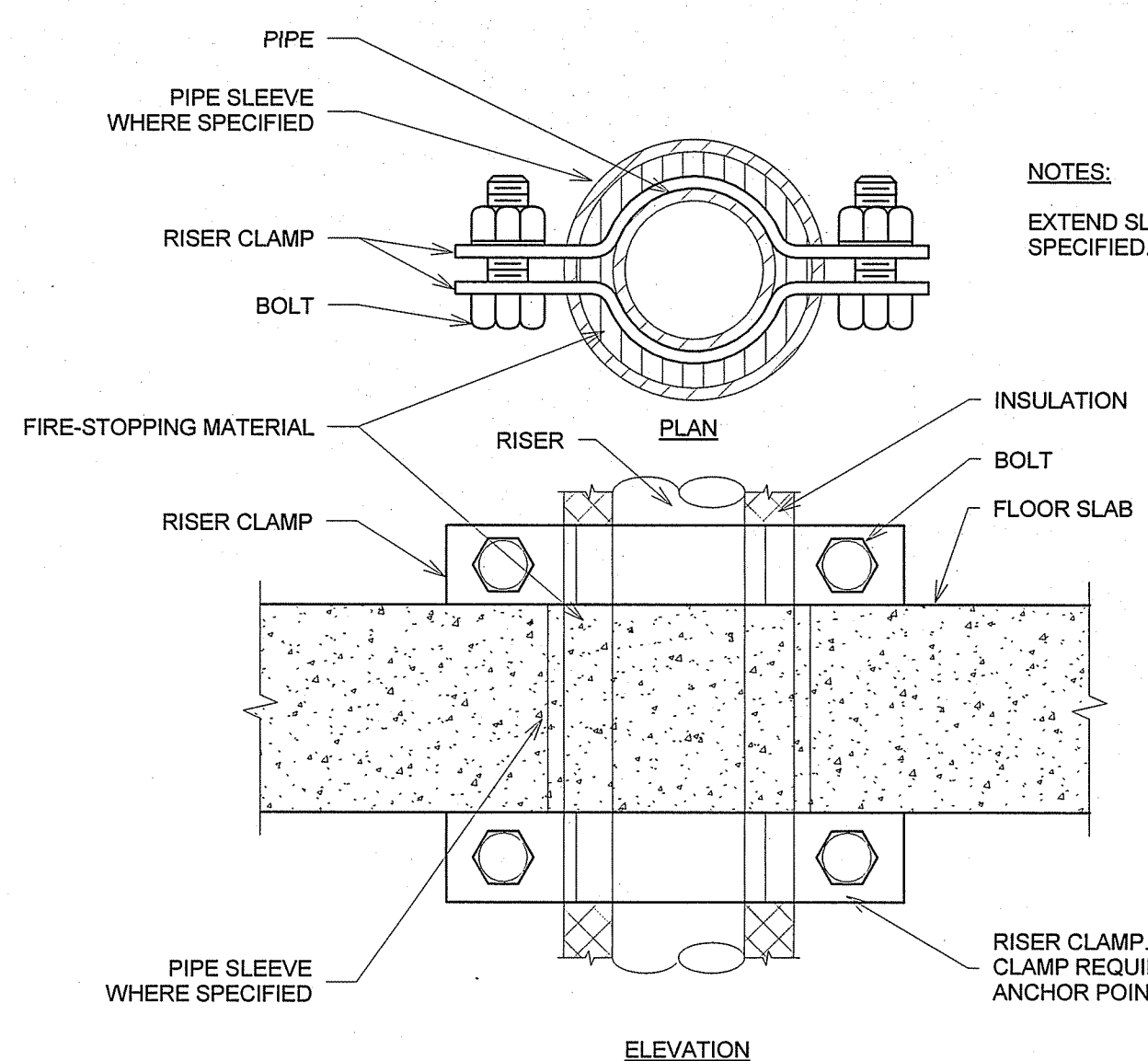
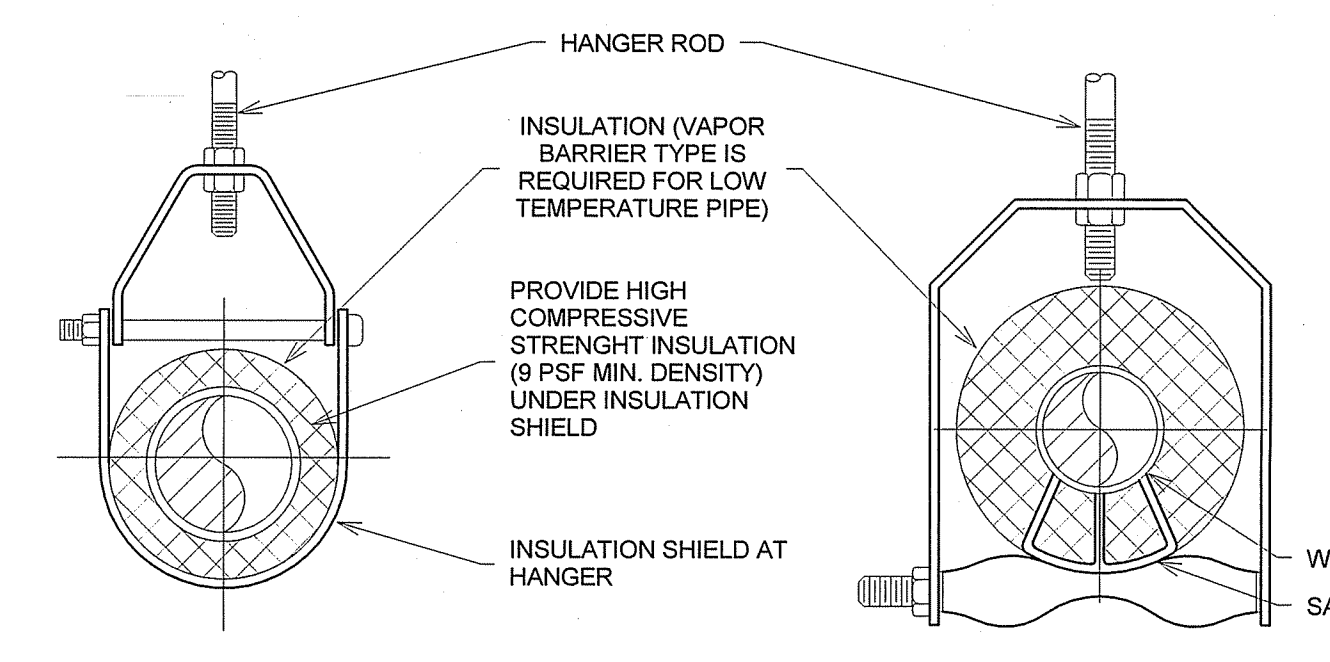


3 CONCRETE PIPE HANGER DETAIL
P1100 / N.T.S.



2 SUPPORT/ANCHOR FOR PIPE RISERS
P1100 / N.T.S.



5 RPZ INSTALLATION DETAIL
P1100 / N.T.S.

SUMP PUMP SCHEDULE													
MARK	LOCATION	AREA SERVED	TYPE	FLUID	FLOW	HEAD	TEMP.	MIN % EFF	HP	PHASE	VOLT	SPEED CONTROL	REMARKS
SP-1	ELEVATOR PIT	ELEVATOR SHAFT	SIMPLEX	WATER	50 GPM	20 ftH2O	40 °F	NA	1/2	1	115	NO	[WITH HIGH WATER LIMIT ALARM. INTEGRATE ALARM WITH BUILDING AUTOMATION SYSTEM]

PLUMBING FIXTURE SCHEDULE													
TAG	DESCRIPTION	WASTE PIPE	VENT PIPE	COLD WATER	HOT WATER	WASTE FIXTURE UNITS	WATER FIXTURE UNITS	WRIST BLADE HANDLES	ELECTRIC SENSOR	REMARKS			
CO	FLOOR CLEANOUT	--	--	--	--	--	--	--	--	SEE SPECIFICATION SECTION 22.13.00.			
FCO	FLOOR CLEANOUT	--	--	--	--	--	--	--	--	SEE SPECIFICATION SECTION 22.13.00. GREY IRON HOUSING WITH CLAMPING DEVICE			
GD-1	PARKING DECK DRAIN FOR SLABS	8"	--	--	--	--	--	--	--	SEE SPECIFICATION SECTION 22.14.00			
GD-2	PARKING DECK DRAIN FOR SLABS	4"	--	--	--	--	--	--	--	SEE SPECIFICATION SECTION 22.14.00			
P-801	FREEZELESS WALL HYDRANT	--	--	3/4"	--	--	0	--	--	SEE SPECIFICATION SECTION 22.40.00. AUTOMATIC DRAINING BACKFLOW PROTECTION, LOOSE KEY			
PRV-1	PRESSURE REDUCING VALVE WITH INTEGRAL STRAINER	--	--	1"	--	--	--	--	--	SINGLE UNION FNPT INLET AND FNPT OUTLET			
RD-2	ROOF DRAIN	3"	--	--	--	--	--	--	--	ROOF DRAIN			
RPZ-1	REDUCED PRESSURE PRINCIPLE ASSEMBLY	--	--	1"	--	--	--	--	--	PROVIDE AIR GAP FITTING AND INDIRECT WASTE TO NEAR FLOOR DRAIN			

PLUMBING GENERAL NOTES

- IN THE CASE OF CONFLICTS AND DISCREPANCIES WITHIN OR AMONG THE CONTRACT DRAWINGS, THE BETTER QUALITY, MORE STRINGENT REQUIREMENTS OR GREATER QUALITY OF WORK, AS DETERMINED BY THE GOVERNMENT, SHALL BE PROVIDED.
- THE ENTIRE PLUMBING SYSTEM SHALL BE IN ACCORDANCE WITH ALL PROJECT SPECIFICATIONS AND ALL VA STANDARDS. EQUIPMENT SHALL BE INSTALLED IN ACCORDANCE TO MANUFACTURER'S WRITTEN RECOMMENDATIONS.
 - ALL WORK SHALL BE COORDINATED WITH ALL OTHER TRADES PRIOR TO INSTALLATION. CONTRACTOR SHALL COORDINATE ROUTING OF ALL PIPING WITH EXISTING CONDITIONS AND SHALL PROVIDE ANY NECESSARY OFFSETS, REROUTING, ETC. REQUIRED FOR A COMPLETE AND COORDINATED INSTALLATION.
 - THESE PLANS ARE DIAGRAMMATIC. CONTRACTOR SHALL PROVIDE ALL NECESSARY OFFSETS, TEES, ELBOWS, ETC FOR A COMPLETE WORKING PLUMBING SYSTEM.
 - THE PLUMBING CONTRACTOR SHALL COMPLY WITH ALL VA PERMIT AND INSPECTION PROCEDURES REQUIRED FOR THIS WORK.
 - CONTRACTOR SHALL COORDINATE ANY PLUMBING SYSTEM REQUIRING SHUTDOWN WITH THE OWNER IN ADVANCE. SEE SPECIFICATION SECTION 01 00 00 FOR SPECIFIC TIME FRAME REQUIREMENTS.
 - ALL DOMESTIC PIPING SHOWN IS LOCATED OVERHEAD OR MOUNTED ON THE WALLS UNLESS NOTED OTHERWISE.
 - ALL PIPING SYSTEMS SHALL BE SUPPORTED AS REQUIRED BY ALL VA STANDARDS AND MANUFACTURER'S RECOMMENDATIONS.
 - ALL PIPING PENETRATIONS THRU NEW OR EXISTING WALLS OR FLOORS SHALL BE SEALED TO EQUAL THE RATING OF THE NEW OR EXISTING WALL OR FLOOR.
 - ALL PLUMBING SYSTEMS SHALL BE TESTED AS REQUIRED PER VA STANDARDS.
 - THE PLUMBING CONTRACTOR SHALL COORDINATE ALL PLUMBING PIPING WITH ALL STRUCTURAL COMPONENTS.
 - THE ENTIRE DOMESTIC WATER SYSTEM SHALL BE DISINFECTED IN ACCORDANCE WITH ALL VA STANDARDS.
 - MANUFACTURER'S TRADE NAMES AND NUMBERS USED HEREIN ARE ONLY TO IDENTIFY COLORS, FINISHES, TEXTURES, AND PATTERNS AS THE BASIS OF DESIGN. PRODUCTS OF AUTHORIZED EQUAL MANUFACTURER'S EQUIVALENT TO COLORS, FINISHES, TEXTURES AND PATTERNS OF MANUFACTURERS LISTED THAT MEET REQUIREMENTS OF TECHNICAL SPECIFICATIONS IN EVERY RESPECT MAY BE ACCEPTABLE WITH SUBMITTAL OF A COMPLETED SUBSTITUTION REQUEST CONTAINING ALL PRODUCT DATA, TESTING AND ACTUAL SAMPLES AND UPON APPROVAL IN WRITING BY CONTRACTING OFFICER.

PLUMBING LEGEND

—SD—	STORM DRAIN (SD)
---SD---	STORM DRAIN (SD) - UNDER SLAB
- . - . -	DOMESTIC COLD WATER PIPING (DCW)
—○—	PIPE TURNS UP
—○—	PIPE TURNS DOWN
—	CONTINUATION

PLUMBING ABBREVIATIONS

ADA	AMERICANS WITH DISABILITIES ACT
FFE	FINISHED FLOOR ELEVATION
AFP	ABOVE FINISHED FLOOR
BFP	BACKFLOW PREVENTER
DCW	DOMESTIC COLD WATER
FCO	FLOOR CLEANOUT (FLOOR OR SLAB)
FD	FLOOR DRAIN
GCO	GRADE CLEANOUT
GW	GREASE WASTE
HB	HOSE BIBB
HD	HUB DRAIN
IW	INDIRECT WASTE
DHW	DOMESTIC HOT WATER
P-#	PLUMBING FIXTURE - NUMBER
P.C.	PLUMBING CONTRACTOR
V	VENT
V.T.R.	VENT THROUGH ROOF
W	WASTE
WCO	WALL CLEANOUT
SW	STORM WATER

1 PIPE HANGERS
P1100 / N.T.S.

DEDUCT ALTERNATES	
1.	DEDUCT 1 a. REMOVE ELEVATOR #2 CAB AND EQUIPMENT. ELEVATOR HOIST WAY TO REMAIN. b. REMOVE CARPARKING COUNT SYSTEM c. REMOVE STOREROOM FROM STAIR SHAFTS DEDUCT 2 - AREA DEDUCT #1 a. DEDUCT LEVEL 4 PRE-CAST CONCRETE STRUCTURE AND ASSOCIATE ITEMS TO COLUMN LINE 7. b. REDUCE STAIR AND ELEVATOR TOWER 1 LEVEL DEDUCT 3 - AREA DEDUCT #2 a. DEDUCT LEVEL 4 PRECAST CONCRETE STRUCTURE AND ASSOCIATE ITEMS FROM COLUMN LINE 7 TO LEVEL 3 RAMP COLUMN LINE 3. b. REDUCE NORTH STAIR TOWER 1 LEVEL. c. REMOVE SLANE SEALER ON ALL LEVELS.

Revisions:

Date

VA

U.S. Department of Veterans Affairs

Michael E. DeBakey VAMC
2002 Holcombe BLVD, Houston TX 77030

ARCHITECT/ENGINEERS:

PROJECT LEAD
Architect, Structural Engineer
GUIDON
DESIGN
905 N. CAPITOL AVE. SUITE 100
INDIANAPOLIS, IN 46204
317.800.6388

Mech & Plumb Engineer
APOGEE CONSULTING GROUP, PA
1151 Kidare Farm Road,
Suite 120,
Cary, NC 27511
T: 919.858.7420

Elec Engineer
CMTA CONSULTING ENGINEERS
1610 Woodstead Court,
Suite 105
Houston, TX 77008
T: 281.419.9899

Civil Engineer
H2B Inc.
1225 North Loop
West, Suite 900
Houston, TX 77008
T: 713.864.2900

Functional Design
CARL WALKER INC.
2801 Network Blvd.,
Suite 101
Frisco, TX 75034
T: 469.777.5143

Drawing Title
PLUMBING NOTES, ABBREVIATIONS,
AND LEGEND

Approved for Design Concept:
FACILITY MANAGEMENT
DIVISION MANAGER

Project Title
BUILD PARKING
GARAGE A

Location
Michael E. DeBakey VAMC, Houston, TX

Date
2015/10/16

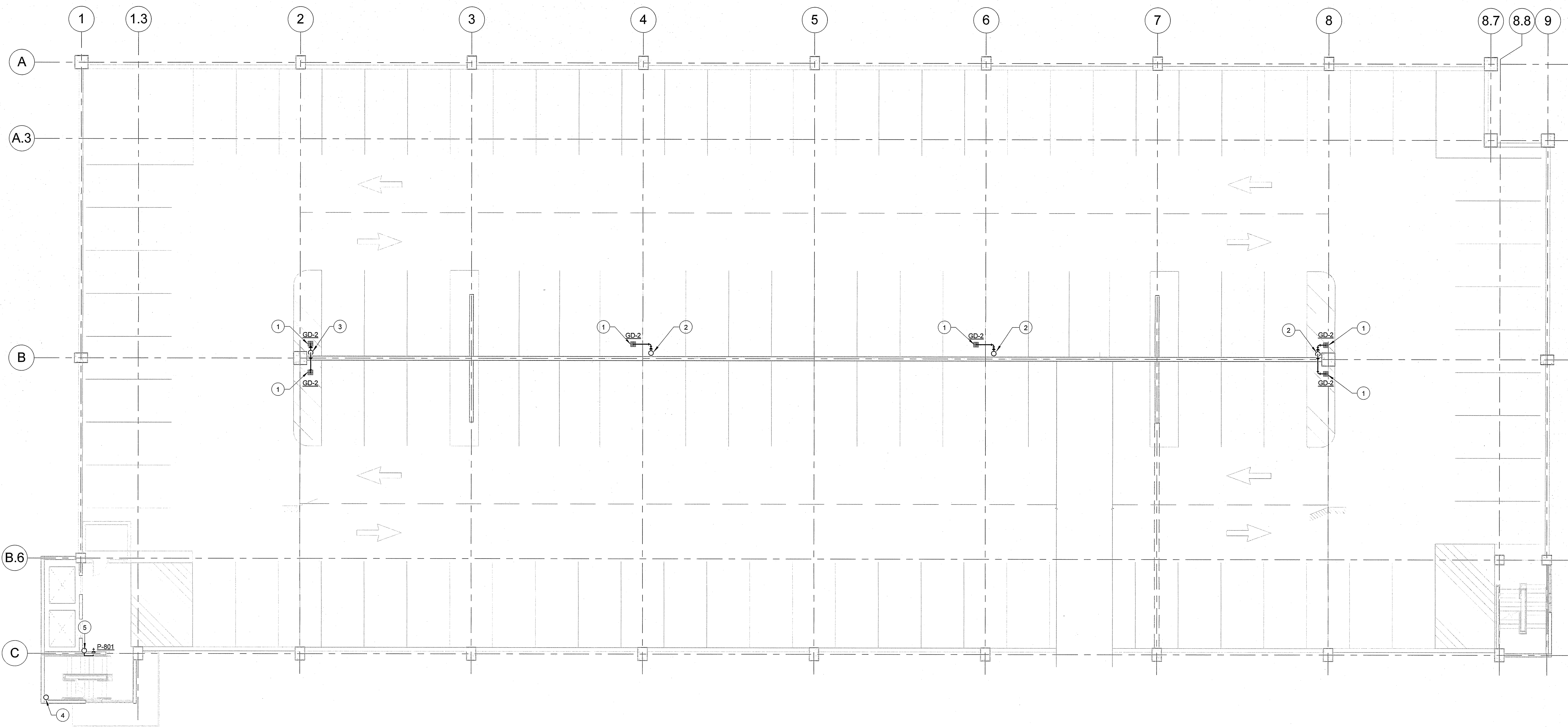
Checked By:
DJR

Drawn By:
ORD

100% CONSTRUCTION DOCUMENTS

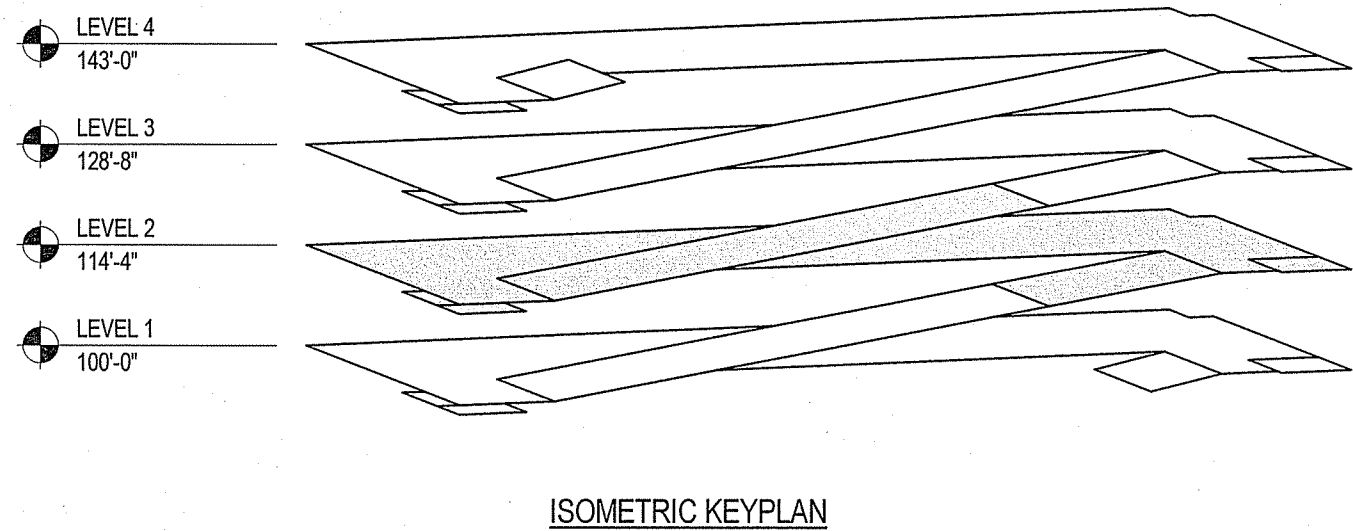
Apogee Project #
14-188
Building Number
123
Drawing Number
P1100

Office of
FACILITIES
MANAGEMENT
VA Project Number
580-321
VA U.S. Department of Veterans Affairs



1
PP102
3/32" = 1'-0"

- | KEY | NOTE |
|-----|---|
| 1 | CENTER DRAINS ON EDGE OF WASH. COORDINATE FLOOR DRAIN LOCATIONS WITH STRUCTURAL PLANS. |
| 2 | 8" Ø STORM DRAIN CONDUCTOR UP AND DOWN. SEE 1/PP103 AND 1/PP101 FOR CONTINUATION. |
| 3 | 10" Ø STORM DRAIN CONDUCTOR UP AND DOWN. SEE 1/PP103 AND 1/PP101 FOR CONTINUATION. |
| 4 | 3" Ø STORM DRAIN CONDUCTOR UP AND DOWN. SEE 1/PP103 AND 1/PP101 FOR CONTINUATION. |
| 5 | 1" DOMESTIC COLD WATER UP AND DOWN. SEE 1/PP103 AND 1/PP101 FOR CONTINUATION. HEAT TRACE EXPOSED DOMESTIC WATER PIPE. |



ISOMETRIC KEY PLAN

ARCHITECT/ENGINEERS:

PROJECT LEAD Architect, Structural Engineer GUIDON DESIGN	Mech & Plumb Engineer APOGEE CONSULTING GROUP, PA	Elec Engineer CMTA CONSULTING ENGINEERS	Civil Engineer H2B Inc.	Functional Design CARL WALKER INC.
905 N. CAPITOL AVE. SUITE 100 INDIANAPOLIS, IN 46204 317.800.6388	1151 Kildare Farm Road, Suite 120, Cary, NC 27511 T: 919.858.7420	1610 Woodstead Court, Suite 105 Woodlands, TX 77380 T: 281.419.9899	1225 North Loop West, Suite 900 Houston, TX 77008 T: 713.884.2900	2801 Network Blvd., Suite 101 Frisco, TX 75034 T: 469.777.5143

100% CONSTRUCTION DOCUMENTS

Drawing Title
LEVEL 2 - PLUMBING PLAN

Approved for Design Concept:
FACILITY MANAGEMENT
DIVISION MANAGER

Project Title
BUILD PARKING
GARAGE A

Location
Michael E. DeBakey VAMC, Houston, TX

Date
2015/10/16

Checked By:
DJR

Drawn By:
ORD

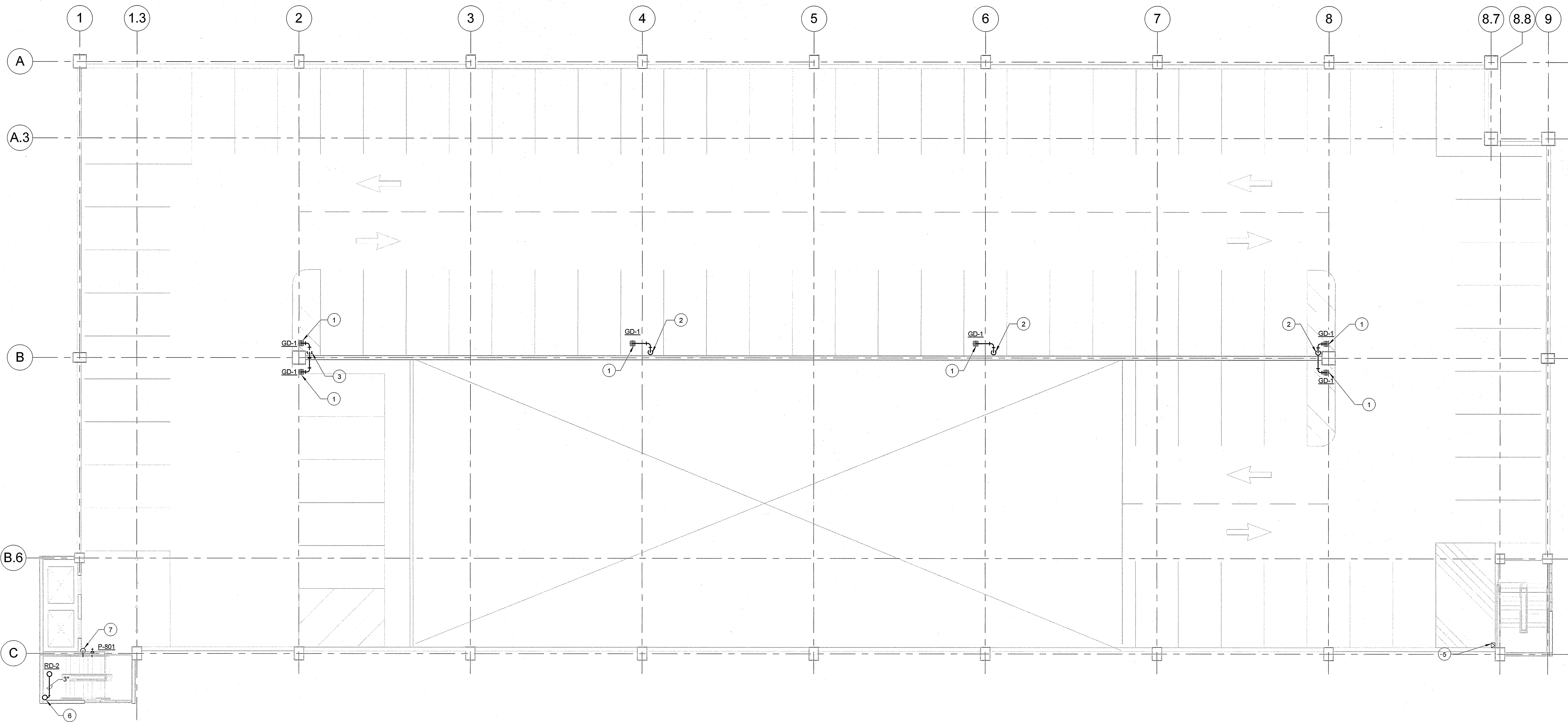
Apogee Project #
14-188
Building Number
123

Drawing Number
PP102

OFFICE OF
FACILITIES
MANAGEMENT

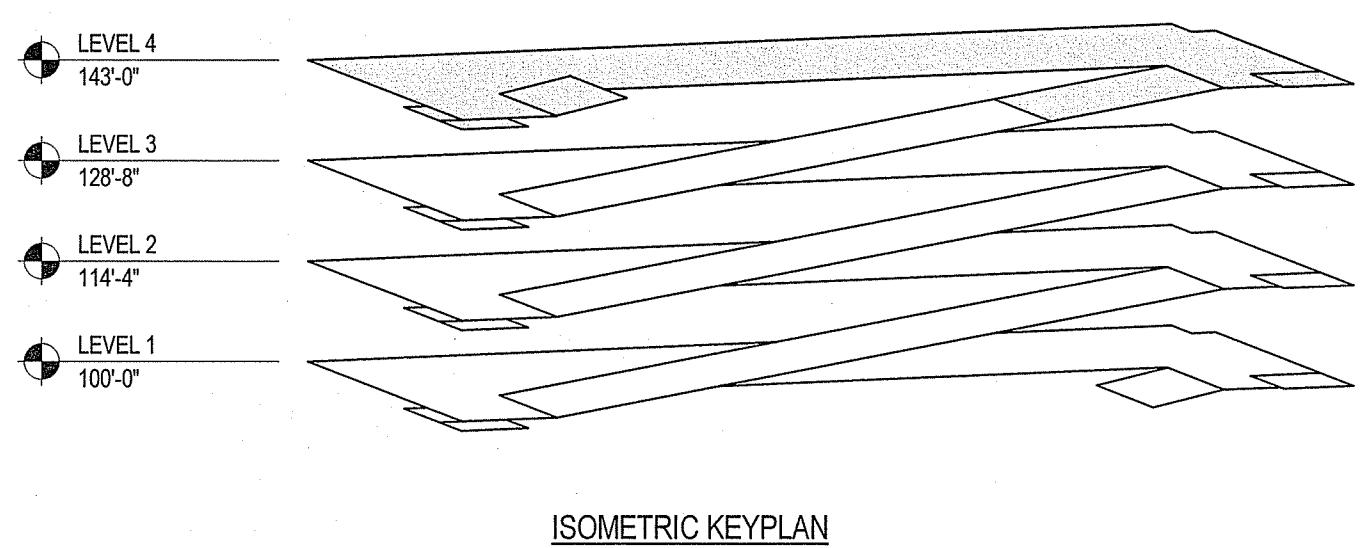
VA Project Number
580-321

VA U.S. Department
of Veterans Affairs



1 LEVEL 4 - PLUMBING PLAN
PP104 3/32" = 1'-0"

- | KEY | NOTE |
|-----|---|
| 1 | CENTER DRAINS ON EDGE OF WASH. COORDINATE FLOOR DRAIN LOCATIONS WITH STRUCTURAL PLANS. |
| 2 | 8" Ø STORM DRAIN CONDUCTOR DOWN. SEE 1/PP103 FOR CONTINUATION. |
| 3 | 10" Ø STORM DRAIN CONDUCTOR DOWN. SEE 1/PP103 FOR CONTINUATION. |
| 4 | ROOF SCUPPER SERVING ELEVATOR TOWER ROOF TO DISCHARGE ON STAIRWELL ROOF. |
| 5 | ROOF SCUPPER TO DISCHARGE ON GARAGE DECK. PROVIDE A SPLASH BLOCK AND A 90° ELBOW TO DIRECT WATER AWAY FROM STAIR. |
| 6 | 3" Ø STORM DRAIN CONDUCTOR DOWN. SEE 1/PP103 FOR CONTINUATION. |
| 7 | 3/4" DOMESTIC COLD WATER DOWN. SEE 1/PP103 FOR CONTINUATION. HEAT TRACE EXPOSED DOMESTIC WATER PIPE. |



ISOMETRIC KEYPLAN

Revisions:		Date:		VA U.S. Department of Veterans Affairs Michael E. DeBakey VAMC 2002 Holcombe BLVD, Houston TX 77030						ARCHITECT/ENGINEERS: PROJECT LEAD Architect, Structural Engineer GUIDON DESIGN 905 N. CAPITOL AVE, SUITE 100 INDIANAPOLIS, IN 46204 317.800.6388 Mech & Plumb Engineer APOGEE CONSULTING GROUP, PA 1151 Kidare Farm Road, Suite 120, Cary, NC 27511 T: 919.858.7420 Elec Engineer CMTA CONSULTING ENGINEERS 1010 Woodstead Court, Suite 105, Woodlands, TX 77380 T: 281.419.9899 Civil Engineer H2B Inc., 1225 North Loop West, Suite 900, Houston, TX 77008 T: 713.864.2900 Functional Design CARL WALKER INC., 2801 Network Blvd., Suite 101, Frisco, TX 75034 T: 469.777.5143		Drawing Title LEVEL 4 - PLUMBING PLAN		Project Title BUILD PARKING GARAGE A		Approved for Design Concept: FACILITY MANAGEMENT DIVISION MANAGER		Location Michael E. DeBakey VAMC, Houston, TX		Date 2015/10/16		Checked By: DJR		Drawn By: ORD		100% CONSTRUCTION DOCUMENTS		Apogee Project # 14-188 Building Number 123 Drawing Number PP104		Office of Facilities Management VA Project Number 580-321 VA U.S. Department of Veterans Affairs	
-------------------	--	--------------	--	---	--	--	--	--	--	---	--	---	--	--	--	--	--	---	--	---------------------------	--	---------------------------	--	-------------------------	--	------------------------------------	--	--	--	---	--

