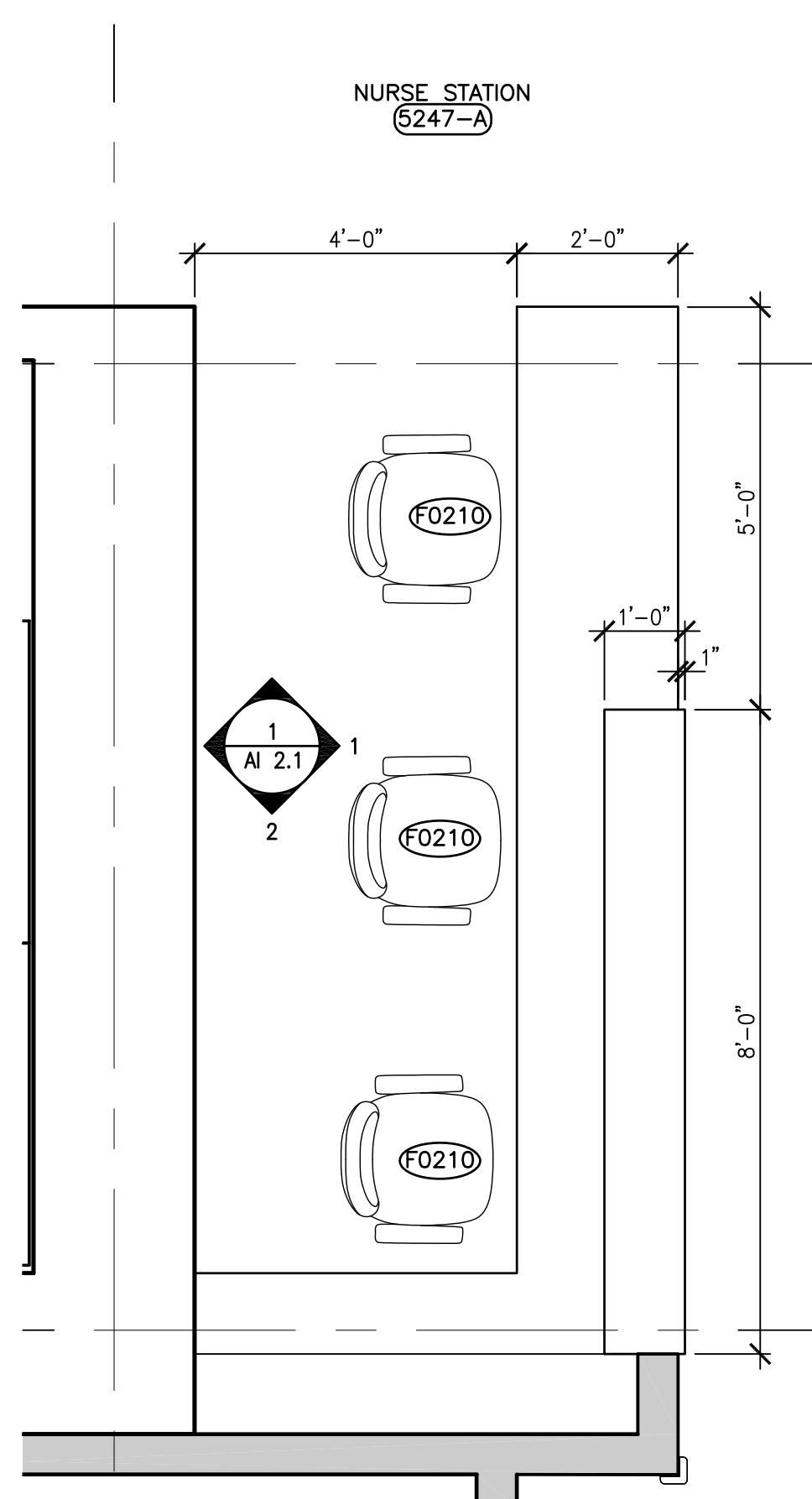
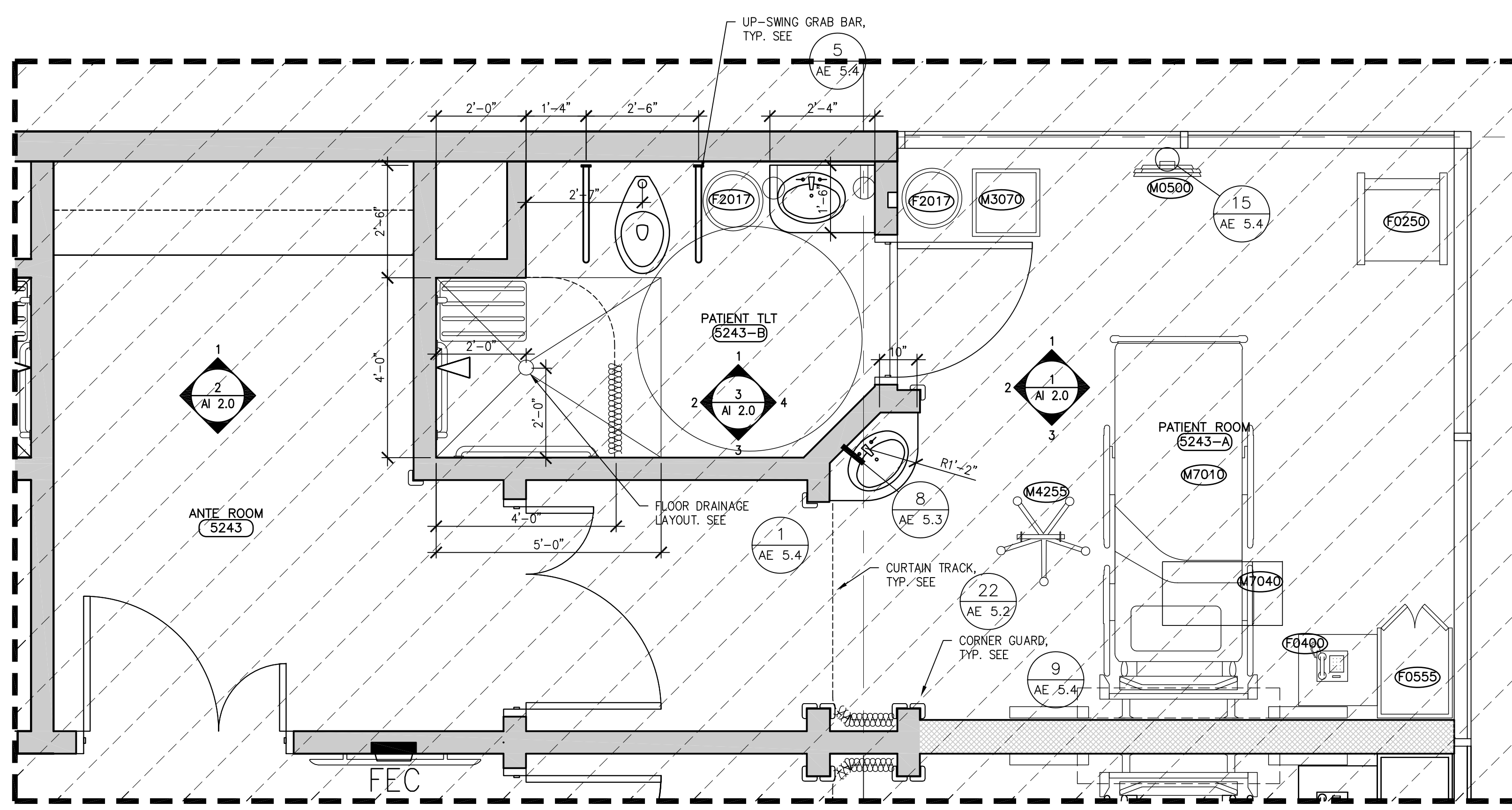


three inches = one foot
one and one half inches = one foot
one inch = one foot
one half inch = one foot
three quarters inch = one foot
one half inch = one foot
three eighths inch = one foot
one quarter inch = one foot
one eighth inch = one foot
one sixteenth inch = one foot

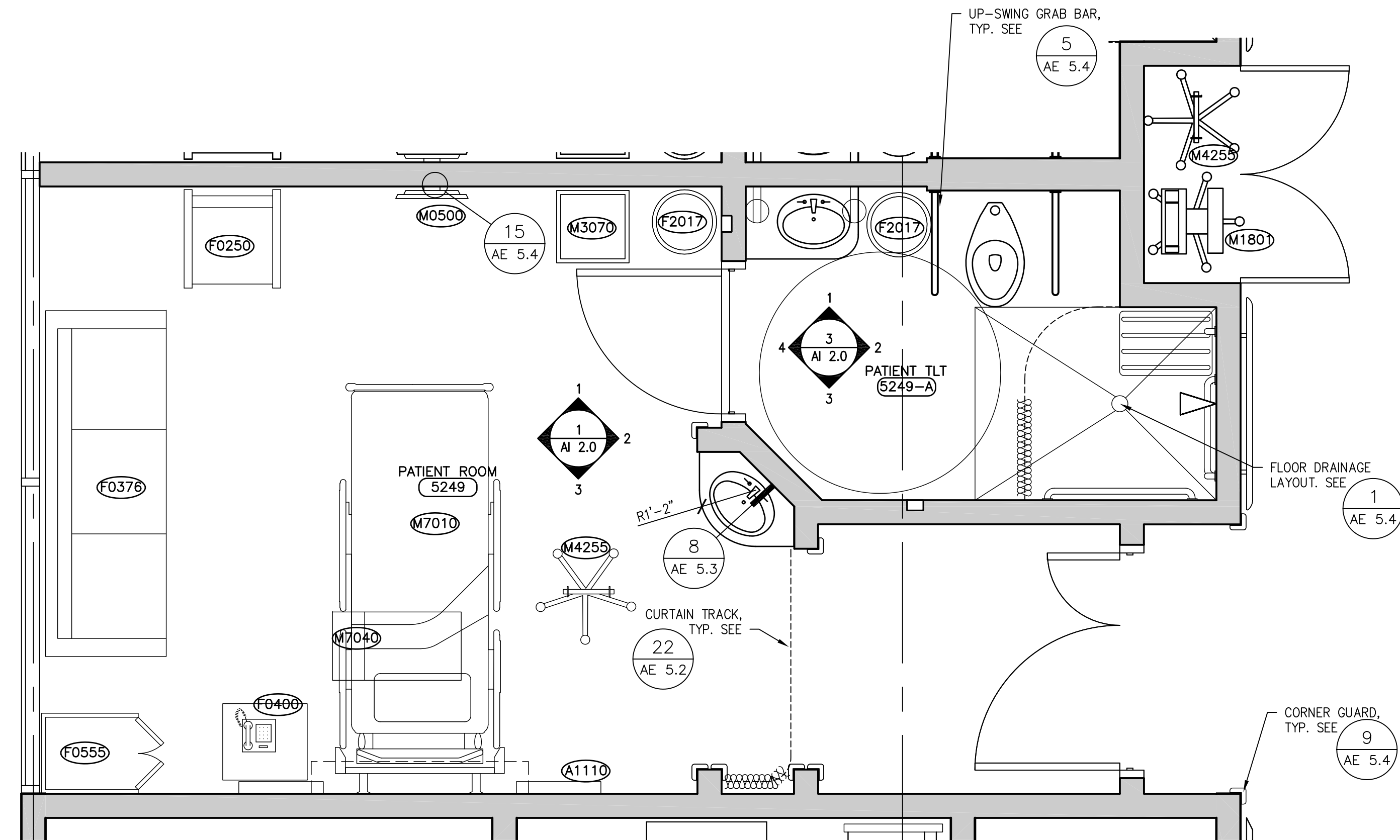
VA FORM 08-6231
10/28/13 AM 10:28:13 AM
VH450C00053
664-14-109 (5E) 4 Patient Room Conversion to Single Patient Rooms
S:\Engineering\Construction & Real Property Mgt\Projects\664-14-109 (5E) 4 Patient Room Conversion to Single Patient Rooms\664-14-109 (5E) 4 Patient Room Conversion to Single Patient Rooms.dwg
4-19-16



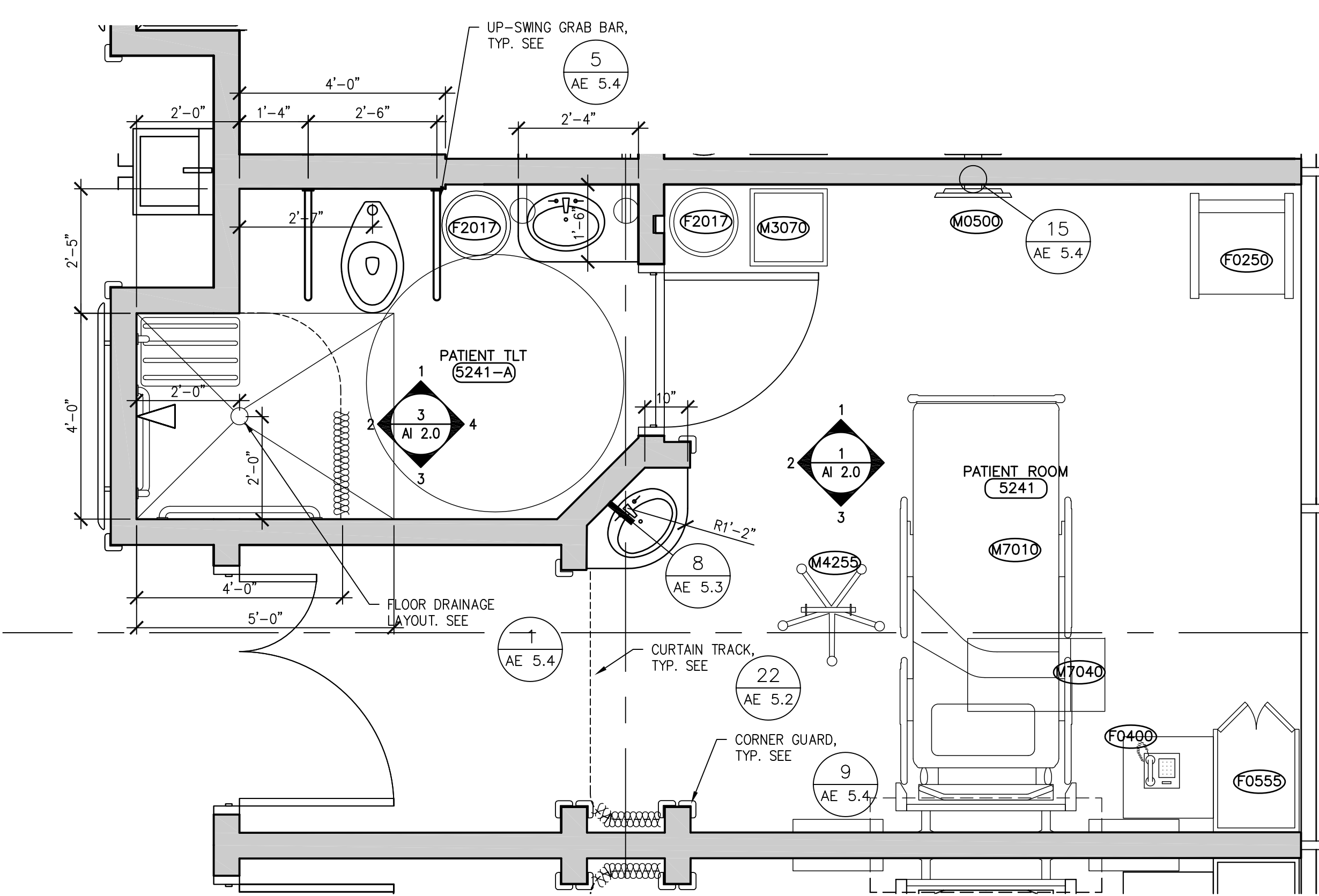
3 NURSE STATION
1/2"=1'-0"



1 ISOLATION PATIENT ROOM - 12'-3" x 12'-7"
1/2"=1'-0"



4 PATIENT ROOM - 14'-0" x 12'-7"
1/2"=1'-0"



2 PATIENT ROOM - 12'-3" x 12'-7"
1/2"=1'-0"

| EQUIPMENT SCHEDULE | | | |
|--------------------|---|-----|------|
| NURSE STATION | | | |
| JSN | DESCRIPTION | QTY | |
| F0210 | Chair, rotary, without arms | 12 | OFOI |
| F0410 | Metal file, under counter | 12 | OFOI |
| F3200 | Clock, atomic, battery operated | 4 | OFOI |
| M1801 | PC, computer system, with keyboard | 12 | OFOI |
| CORRIDOR HAND WASH | | | |
| JSN | DESCRIPTION | QTY | |
| A5075 | Dispenser, soap, liquid, wall mounted | 4 | OFOI |
| A5080 | Dispenser, paper towel, surface mounted | 4 | OFOI |
| P6500 | Sink, service, clinic, flushing rim, wall hung (PG-18-1, MCS 22 40 00) | 4 | CFCI |
| PATIENT ROOM | | | |
| JSN | DESCRIPTION | QTY | |
| A1110 | Headwall, Prefabricated: Unit consists of a patient service module for general care. It contains lighting, medical gases, electrical outlets, nurse call and bed bumper. | 32 | CFCI |
| A5075 | Dispenser, soap, liquid, wall mounted | 32 | OFOI |
| A5080 | Dispenser, paper towel, surface mounted | 32 | OFOI |
| A5180 | Track, Cubicle, Surface Mounted, With Curtain: Track constructed of thick extruded aluminum. Equipped with self lubricating carriers, beaded drop chain hooks, and flame resistant curtain. To include removable end caps. | 32 | OFOI |
| F0250 | Chair, Arm, Lounge Type | 32 | OFOI |
| F0376 | Sofa, Sleeper, Sleeper sofa, App. Dimensions: 88"W x 30"S x 35"H. Sofa designed to convert into a temporary bed. | 12 | OFOI |
| F0400 | Cabinet, Bedside, Door, Drawer: 31" high X 21" wide X 19" deep with one (1) drawer and one (1) closed storage closet. Drawer is removable so interior can be sanitized. | 32 | OFOI |
| F0555 | Wardrobe, Patient Clothing | 32 | OFOI |
| F2017 | Waste Receptacle, 24 Gal: Rectangular steel waste receptacle with step-on lid and 24 gallon capacity. | 32 | OFOI |
| F3200 | Clock, Battery, 12" Diameter | 32 | OFOI |
| M0500 | Television, Color, 20" Diagonal: Unit consists of a color receiver/monitor, with remote control, full off-air channel capability, automatic light sensor, broadcast stereo sound and automatic color balance. | 32 | OFOI |
| M3070 | Hamper, Linen, Mobile, w/Lid: Mobile linen hamper with hand or foot operated lid. Made of heavy tubular stainless steel with heavy gauge welded steel platform. Holds 25" hamper bags. Mounted on ball bearing casters. | 32 | OFOI |
| M4255 | Stand, IV, Adjustable, with 4-hook arrangement. Stand has stainless steel construction with heavy weight base. It adjusts from 66 inches to 100 inches and is mounted on conductive rubber, ball bearing, swivel casters. Stand is used for administering intravenous solutions. | 32 | OFOI |
| M7010 | Bed, Patient, Electric: Includes safety side rails, IV rod insertion slots and patient control panel for a full range of positions. Four wheel locking brakes. Overall bed height adjustable between 16.5 and 31 inches | 32 | OFOI |
| M7040 | Table, Overbed: Adjustable height table constructed of heavy gauge steel. Mounted on 2" diameter twin swivel casters with bumper caps. Table top is constructed with a high pressure plastic laminated surface that resists chipping, scratching, and staining. It includes a vanity tray and a mirror. | 32 | OFOI |
| P3070 | Vitreous China, Under or Counter Top Mtd | 32 | CFCI |

| TOILET, PATIENT | | | |
|--------------------------|--|-----|------|
| JSN | DESCRIPTION | QTY | |
| A1090 | Mirror, 24" x 36" (600 mm x 900 mm) over wheelchair lavatory (PG-18-1, MCS 10 28 00, PG-18-4, NCS SD 10 28 00-3) | 32 | CFCI |
| A5030 | Bench, Stall, Shower, Built In | 32 | CFCI |
| A5075 | Dispenser, soap, liquid, wall mounted | 64 | OFOI |
| A5080 | Dispenser, paper towel, surface mounted | 32 | OFOI |
| A5109 | Bar, grab retractable for water closet (PG-18-1, MCS 10 28 00, PG-18-4, NCS SD 10 21 13-1) | 32 | CFCI |
| A5110 | Grab Bar, 1-1/4" Dia., SS, 2 Wall, Shower Use | 32 | CFCI |
| A5145 | Hook, coat, wall mounted | 32 | CFCI |
| A5170 | Rod, Shower Curtain, 1" Diameter, W/Curtain & Hooks | 32 | CFCI |
| A5200 | Dispenser, toilet tissue, double roll (PG-18-1, MCS 10 28 00, PG-18-4, NCS SD 10 21 13-1) | 32 | OFOI |
| A5205 | Bar, Towel, 1" Diameter, SS, Surface Mounted | 32 | OFOI |
| F2017 | Receptacle, waste, step on type, approx. 12" (300 mm) diameter | 32 | OFOI |
| P3070 | Vitreous China, Under or Counter Top Mtd | 32 | CFCI |
| P3040 | Shower, Single, Hand-Held | 32 | CFCI |
| P9150 | Water closet, wall hung (PG-18-1, MCS 22 40 00) | 32 | CFCI |
| TOILET, PUBLIC/STAFF | | | |
| JSN | DESCRIPTION | QTY | |
| A1066 | Mirror, 24" x 36" (600 mm x 900 mm) over wheelchair lavatory (PG-18-1, MCS 10 28 00, PG-18-4, NCS SD 10 28 00-3) | 6 | CFCI |
| A5075 | Dispenser, soap, liquid, wall mounted | 6 | OFOI |
| A5080 | Dispenser, paper towel, surface mounted | 6 | OFOI |
| A5109 | Bar, grab for water closet (PG-18-1, MCS 10 28 00, PG-18-4, NCS SD 10 21 13-1) | 6 | CFCI |
| A5145 | Hook, coat, wall mounted | 6 | CFCI |
| A5200 | Dispenser, toilet tissue, double roll (PG-18-1, MCS 10 28 00, PG-18-4, NCS SD 10 21 13-1) | 6 | OFOI |
| F2017 | Receptacle, waste, step on type, approx. 12" (300 mm) diameter | 6 | OFOI |
| P3100 | Lavatory, Wall mounted, slab type, vitreous china, lavatory (approximate bowl size 7"x15"x10") with: faucet holes on 4" centers; gooseneck spout; wrist blade handles; and gnd strainer. | 6 | CFCI |
| P9150 | Water closet, wall hung (PG-18-1, MCS 22 40 00) | 6 | CFCI |
| CLEAN SUPPLY ROOM | | | |
| JSN | DESCRIPTION | QTY | |
| E0945 | Cart, mobile with adjustable shelves, 27" x 36" x 38" (675 mm x 900 mm x 950 mm) | 2 | OFOI |
| M2050 | Shelving, storage, mobile, steel, rod shelf, open style with 5 adjustable shelves | 2 | OFOI |
| M13150 | Automated storage/dispensing unit (cail), approx. 27" W x 25" D x 75" H (675 mm W x 635 mm D x 1950 mm H) | 2 | OFOI |
| SOILED UTILITY ROOM | | | |
| JSN | DESCRIPTION | QTY | |
| A5075 | Dispenser, soap, liquid, wall mounted | 2 | OFOI |
| A5080 | Dispenser, paper towel, surface mounted | 2 | OFOI |
| F0510 | Carts, soiled, linen | 2 | OFOI |
| F0535 | Cart, utility, corrosion resisting steel, 36" x 18" x 30" (900 mm x 450 mm x 750 mm) | 2 | OFOI |
| P3100 | Lavatory, sensor control (PG-18-1, MCS 22 40 00) | 2 | CFCI |
| P6500 | Sink, service, clinic, flushing rim, wall hung (PG-18-1, MCS 22 40 00) | 2 | CFCI |
| HOUSEKEEPING AIDS CLOSET | | | |
| JSN | DESCRIPTION | QTY | |
| A5075 | Dispenser, soap, liquid, wall mounted | 1 | OFOI |
| A5080 | Dispenser, paper towel, surface mounted | 1 | OFOI |
| A5135 | Shelving, wall hung, corrosion resisting steel, 2 fixed shelves, 2 doors with locks, 36" x 12" x 48" (900 mm x 300 mm x 1200 mm), 60" (1520 mm) above finished floor (PG-18-1, MCS 12 51 00) | 1 | OFOI |
| A5135 | Rack, mop, wall mounted (PG-18-1, MCS 10 28 00) | 1 | OFOI |
| P4700 | Sink, service, corner, floor mounted (PG-18-1, MCS 22 40 00) | 1 | CFCI |
| OFFICE | | | |
| JSN | DESCRIPTION | QTY | |
| A5145 | Hook, coat, wall mounted | 4 | OFOI |
| E0210 | Modular work station with under counter keyboard tray, overhead storage, and wall hanger strips | 4 | OFOI |
| F0120 | Bookcase, sectional, each section, 33" x 13" x 75" (825 mm x 325 mm x 1875 mm) with 10" (250 mm) base | 4 | OFOI |
| F0205 | Chair, rotary, with arms | 4 | OFOI |
| F0210 | Chair, straight, without arms | 4 | OFOI |
| F2000 | Receptacle, waste, 13" (325 mm) diameter | 4 | OFOI |
| F3010 | Bulletin board, 48" x 36" (1200 mm x 900 mm) | 4 | OFOI |
| F3200 | Clock, atomic, battery operated | 4 | OFOI |
| M1801 | PC, computer system, with keyboard | 4 | OFOI |
| LOCKER | | | |
| JSN | DESCRIPTION | QTY | |
| A1030 | Locker, 2 Person, Over/Under, 12x15x72 | 16 | OFOI |
| A5020 | Bench, Locker Room, Floor Mounted, 3 ft long | 2 | OFOI |
| BREAK ROOM | | | |
| JSN | DESCRIPTION | QTY | |
| G5080 | Sink, SS, Single Compartment, 7.5x16x14 ID | 1 | CFCI |
| R7000 | Refrigerator, 14 Cubic Feet | 1 | OFOI |

OFOI OWNER FURNISHED - OWNER INSTALLED
CFCI CONTRACTOR FURNISHED - CONTRACTOR INSTALLED

CONSULTANTS:

ARCHITECT/ENGINEERS:

Drawing Title

ENLARGED ROOM PLANS

Project Title

(5E) 4 PATIENT ROOM CONVERSION TO SINGLE PATIENT ROOMS (POD-A) VA SAN DIEGO, BUILDING 1

Project Number

664-14-109

Building Number

1

Location

SAN DIEGO, CA

Date

29 January 2016

Checked

Drawn

Drawing Number

AI 4.0

Dwg. 17 of 36

Office of Construction and Facilities Management