

GENERAL STRUCTURAL & CONSTRUCTION NOTES

GENERAL CONSTRUCTION WORK
THE FOLLOWING GENERAL STRUCTURAL NOTES ARE APPLICABLE TO THE STRUCTURAL DRAWINGS ONLY.
THESE NOTES ARE PROVIDED FOR CONVENIENCE AND ARE SUPPLEMENTAL TO THE SPECIFICATIONS.

GENERAL

- JOB SAFETY SHALL BE THE SOLE RESPONSIBILITY OF THE CONTRACTOR.
- CODE: ALL CONSTRUCTION SHALL CONFORM TO THE PROVISIONS OF THE LATEST EDITIONS OF THE (IBC) INTERNATIONAL BUILDING CODE AND ITS SUPPLEMENTS.
- TYPICAL SECTIONS AND DETAILS: ALL SECTIONS, DETAILS AND NOTES ARE INTENDED TO BE TYPICAL UNLESS OTHERWISE DETAILED. SHOP AND ERECTION DRAWINGS SUBMITTED BY THE CONTRACTOR SHALL SHOW APPLICATION OF TYPICAL SECTIONS AND DETAILS FOR SIMILAR SITUATIONS.
- OPENINGS AND EMBEDDED ITEMS: ALL CURBED AND OTHER OPENINGS, EQUIPMENT BASES, DEPRESSIONS, FRAMES, CASTINGS, PIPE SLEEVES, CONDUITS, INSERTS, EDGE PROTECTION, ANCHOR BOLTS AND SIMILAR ITEMS SHALL BE PROVIDED, LOCATED AND INSTALLED AS SHOWN ON APPROVED SHOP DRAWINGS FOR MANUFACTURED ITEMS AND OTHER TRADES.
- VERIFY EXISTING UNDERGROUND UTILITIES. INFORM AND OBTAIN REQUIRED PERMITS FROM OWNERS OF SUCH UTILITIES BEFORE STARTING ANY WORK.
- THE CONTRACTOR SHALL COORDINATE NEW EQUIPMENT STRUCTURES SHOWN ON THE CONTRACT DRAWINGS WITH MANUFACTURER'S APPROVED SHOP DRAWINGS. ALL DIMENSIONS, DETAILS AND STRUCTURAL DESIGN REVISIONS REQUIRED TO ACCOMMODATE APPROVED EQUIPMENT SHALL BE MADE BY THE CONTRACTOR AT NO COST TO THE VA.

STRUCTURAL DESIGN CRITERIA

- PROPOSED WORK IS DESIGNED AND SHALL BE CONSTRUCTED IN CONFORMANCE WITH THE LATEST EDITIONS OF THE FOLLOWING CODES AND STANDARDS:
 - GOVERNING BUILDING CODE: (IBC) INTERNATIONAL BUILDING CODE
 - ACI BUILDING CODE REQUIREMENTS FOR STRUCTURAL CONCRETE, 318.
 - AISC MANUAL OF STEEL CONSTRUCTION, ALLOWABLE STRESS DESIGN.
 - AWS STRUCTURAL WELDING CODES - D1.1 AND D1.4.
 - STEEL DECK INSTITUTE DESIGN MANUAL.
 - APPLICABLE STATUTES AND REGULATIONS OF VA, FEDERAL, STATE AND LOCAL JURISDICTIONS.

- DESIGN LOADS:
 - LIVE LOADS:

ROOF	20 PSF
GROUND SNOW LOAD (Pg)	25 PSF
SNOW EXPOSURE FACTOR (Ce)	1.0
SNOW LOAD IMPORTANCE FACTOR	1.2
STAIR/LOBBY	100 PSF

- SEISMIC:

VA SITE NO.	581 (LOW SEISMICITY)
IMPORTANT FACTOR Ie	1.5
SITE CLASS	D
SITE COEFFICIENT, Fa	1.6
SITE COEFFICIENT, Fv	2.4

- WIND LOAD:

BASIC WIND SPEED (V)	90 MPH
EXPOSURE CATEGORY	B
IMPORTANT FACTOR Iw	1.15
WIND DESIGN PRESSURE (P)	15.86 PSF

- STAIRS, LANDINGS AND ALL CONNECTIONS SHALL BE DESIGNED IN ACCORDANCE WITH OSHA REQUIREMENTS BY THE SUPPLIER FOR A MINIMUM LIVE LOAD OF 100 PSF. TREADS SHALL BE DESIGNED FOR A MINIMUM 300 POUND POINT LOAD DISTRIBUTED OVER 4 SQUARE INCHES. ALL HANDRAILS SHALL BE DESIGNED FOR A LATERAL LOAD OF 50 PLF APPLIED TO THE TOP OF THE RAIL OR A 200 POUND LOAD AT ANY POINT IN ANY DIRECTION WHICHEVER GOVERNS THE DESIGN.

EXISTING CONDITIONS

- ALL DIMENSIONS, ELEVATIONS AND PHYSICAL CONDITIONS SHOWN ON THE DRAWINGS FOR EXISTING STRUCTURES ARE BASED ON LIMITED FIELD INSPECTIONS AND OTHER AVAILABLE SOURCES. SUCH DEPICTIONS OF EXISTING CONSTRUCTION ARE INTENDED TO BE GENERAL, APPROXIMATE AND LIMITED TO THOSE AREAS FOR WHICH WORK IS REQUIRED, AND ARE PROVIDED ONLY FOR THE CONVENIENCE OF THE CONTRACTOR. PRIOR TO BIDDING, CONDUCT A CAREFUL EXAMINATION OF EXISTING CONDITIONS AT THE SITE APPLICABLE TO THE WORK.
- THE EXACT EXTENT OF THE CONSTRUCTION WORK CANNOT BE NECESSARILY OR ACCURATELY DETERMINED PRIOR TO WORK. ACTUAL FIELD CONDITIONS MAY REQUIRE MODIFICATIONS TO THE CONSTRUCTION DETAILS, MATERIAL QUANTITIES AND EXTENT OF THE MODIFICATION WORK SHOWN ON CONTRACT DRAWINGS. PERFORM THE WORK TO MEET FIELD CONDITIONS ENCOUNTERED.
- EXAMINE AND FIELD VERIFY ALL EXISTING AND GIVEN DIMENSIONS AND CONDITIONS PRIOR TO COMMENCEMENT OF THE WORK AND FABRICATION OF CONSTRUCTION MATERIALS. REPORT VARIANCES FROM THE DRAWINGS AND SPECIFICATIONS AND POTENTIAL INTERFERENCES PROMPTLY TO THE VA. INCORPORATE ACTUAL FIELD CONDITIONS AND DIMENSIONS IN THE WORK AND INDICATE CHANGES AND ADJUSTMENTS ON DRAWINGS SUBMITTED FOR APPROVAL.

CONSTRUCTION OPERATIONS

- NOTIFY THE VA OF ANY CONFLICT ON CONTRACT DRAWINGS DURING BID. IN CASE OF CONFLICT IN THE CONTRACT DRAWINGS OR THE PROJECT SPECIFICATIONS, THE MOST STRINGENT REQUIREMENT SHALL APPLY.
- AFTER THE AWARD OF THE CONTRACT, THE CONTRACTOR MAY NOT SUBMIT ANY CLAIM ALLEGING INSUFFICIENT DATA, INCORRECTLY ASSUMED CONDITIONS, OR MISUNDERSTANDING WITH REGARD TO MATTERS FOR WHICH NO SUCH CLARIFICATION WAS SOUGHT DURING THE BIDDING PHASE OF THE PROJECT, AS DESCRIBED FURTHER IN THE GENERAL CONDITION CONTRACT.
- ASSUME AN ABSOLUTE OBLIGATION TO PROTECT EXISTING STRUCTURES AND EQUIPMENT, NEW WORK AND THE GENERAL PUBLIC FROM DAMAGE, LOSS OR INJURY RESULTING FROM THE CONTRACTOR'S OPERATIONS. IN THE EVENT OF SUCH DAMAGE OR LOSS, PROMPTLY REPLACE OR RESTORE THE WORK TO AN EQUIVALENT QUALITY TO THE SATISFACTION OF THE COR AND AT NO EXPENSE TO THE VA.
- REMOVE TO THE EXTENT INDICATED AND PROPERLY DISPOSE OF EXISTING STRUCTURES AND MATERIALS TO BE DEMOLISHED IN ACCORDANCE WITH THE SPECIFICATIONS.
- EXCAVATIONS WHICH MAY UNDERMINE EXISTING STRUCTURES TO REMAIN SHALL BE BRACED BY A SUITABLE EXCAVATION SUPPORT SYSTEM DESIGNED IN ACCORDANCE WITH THE SPECIFICATIONS AND APPROVED BY THE VA. DESIGN SHALL BE PERFORMED BY A QUALIFIED PROFESSIONAL ENGINEER CURRENTLY REGISTERED IN THE STATE OF WHICH THE PROJECT IS LOCATED.
- ALL WORK SPECIFIED HEREIN SHALL BE INSPECTED IN ACCORDANCE WITH THE BUILDING CODE AND ALL LOCAL ORDINANCES. THE COR MAY VISIT THE SITE TO ASCERTAIN GENERAL CONFORMANCE WITH THE CONTRACT DOCUMENTS. SUCH SITE VISITS ARE NOT TO BE CONSTRUED AS MEETING ANY INSPECTION REQUIREMENTS UNLESS THE COR SPECIFICALLY SO STATES IN WRITING.
- RFI & RFC ARE REQUIRED TO BE COMMUNICATED FORMALLY AND IN WRITING TO THE COR AS PROVIDED IN THIS GENERAL NOTES. THE PURPOSE OF THIS POLICY IS TO AVOID COMMUNICATION WITH UNAUTHORIZED PERSONS AND TO MINIMIZE MISINFORMATION AND SPECULATION. THE COR WILL NOT RECOGNIZE AND CANNOT BE OBLIGATED TO ANY REQUEST THAT HAS NOT BEEN COMMUNICATED IN THE MANNER SET FORTH ABOVE. THE VA CANNOT BE RESPONSIBLE FOR ANY MISCOMMUNICATION OR MISINFORMATION OBTAINED IN VIOLATION OF THIS POLICY AND RESERVES THE RIGHT TO REJECT ANY REQUEST IN THE EVENT THAT ANY PERSON FAILS TO ADHERE TO THIS POLICY.





SELECTIVE DEMOLITION NOTES

- CONDUCT DEMOLITION OPERATIONS TO PREVENT INJURY TO PERSONS AND DAMAGE TO ADJACENT STRUCTURES, FACILITIES AND SITE IMPROVEMENTS TO REMAIN. ENSURE SAFE PASSAGE OF PERSONS AROUND SELECTIVE DEMOLITION AREA. LOCATE AND RE-ROUTE ANY EXISTING UTILITY PRIOR TO STARTING THE WORK.
- DEMOLISH AND REMOVE EXISTING CONSTRUCTION TO THE EXTENT INDICATED ON THE DRAWINGS, OR AS OTHERWISE NECESSARY TO ACCOMMODATE NEW CONSTRUCTION. USE METHODS REQUIRED TO COMPLETE WORK WITHIN LIMITATIONS OF GOVERNING REGULATIONS.
- PROMPTLY PATCH AND REPAIR DAMAGED SURFACES IN ADJOINING CONSTRUCTION TO REMAIN, WHICH ARE CAUSED BY SELECTIVE DEMOLITION OPERATIONS.
- THE OWNER WILL USE AND OCCUPY PORTIONS OF THE FACILITY AND SITE IMMEDIATELY ADJACENT TO SELECTIVE DEMOLITION AREA. CONDUCT SELECTIVE DEMOLITION SO THAT OWNER'S OPERATIONS WILL NOT BE DISRUPTED. PROVIDE NOT LESS THAN 72 HOURS' NOTICE TO THE OWNER OF ACTIVITIES THAT WILL AFFECT OWNER'S OPERATIONS.
- THE OWNER ASSUMES NO RESPONSIBILITY FOR ACTUAL CONDITIONS OF COMPONENTS AND SITE ELEMENTS TO BE SELECTIVELY DEMOLISHED.
- PROMPTLY DISPOSE OF DEMOLISHED MATERIALS OFF-SITE. DO NOT PERMIT DEMOLISHED MATERIALS TO ACCUMULATE ON-SITE. TRANSPORT DEMOLISHED MATERIALS OFF THE VA'S PROPERTY AND DISPOSE OF IN A SAFE AND LAWFUL MANNER.

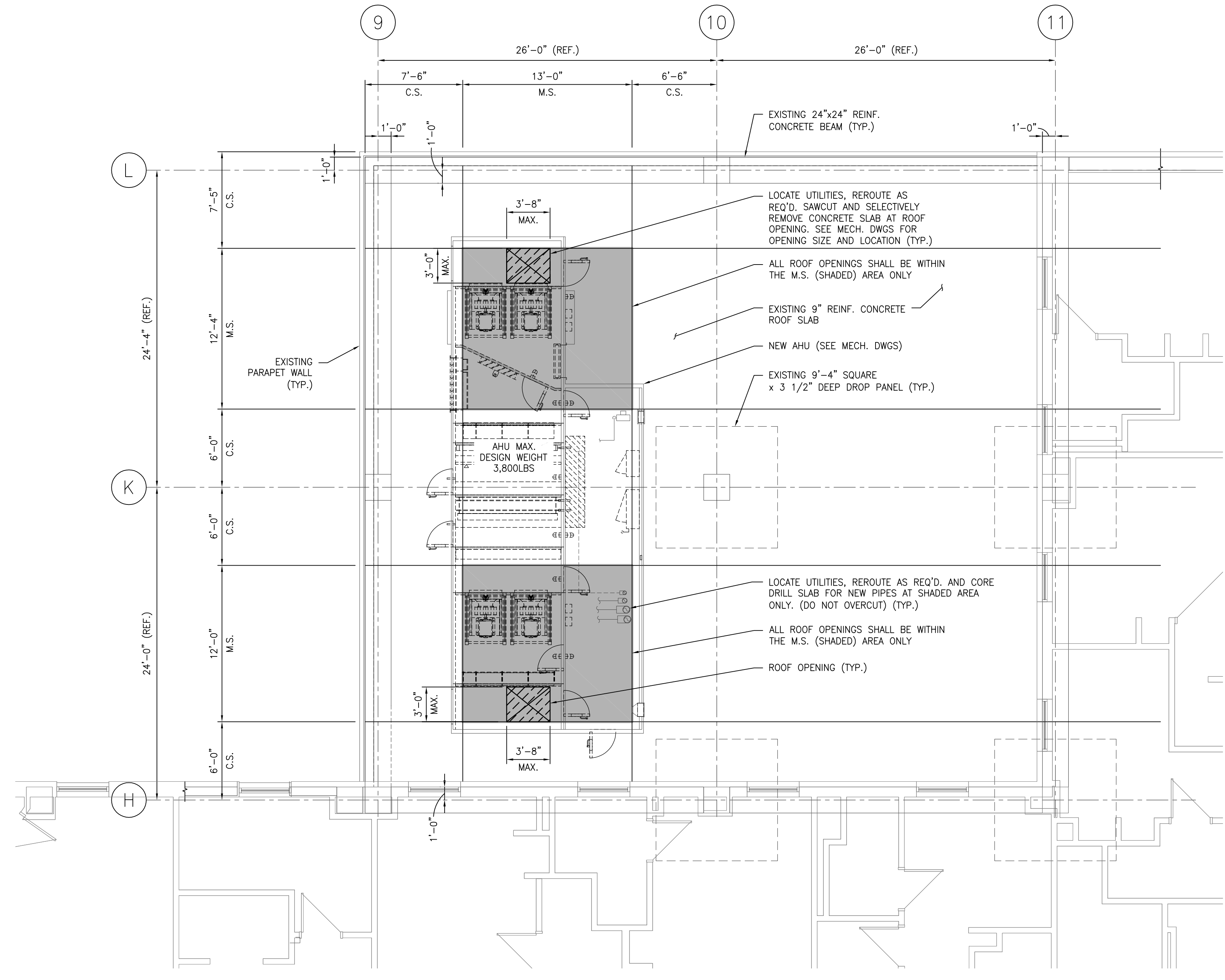
ABBREVIATIONS

A.B.	ANCHOR BOLT	L.P.	LOW POINT
ADDL.	ADDITIONAL	L.W.	LIGHT WEIGHT
A.F.F.	ABOVE FINISH FLOOR	LLH	LONG LEG HORIZONTAL
ALT.	ALTERNATE	LLV	LONG LEG VERTICAL
ARCH.	ARCHITECT	LWB	LONG WAY BOTTOM
B.C.E.	BOTTOM CHORD EXTENSION	M.E.P.	MECHANICAL ELECTRICAL PLUMBING
B.O.	BOTTOM OF	M.S.T.	METAL STUD TRUSS
BLDG.	BUILDING	MAX.	MAXIMUM
BM.	BEAM	MECH.	MECHANICAL
BOTT.	BOTTOM	MEZZ.	MEZZANINE
BRG.	BEARING	MFR.	MANUFACTURER
BSMT.	BASEMENT	MIN.	MINIMUM
BP_	BEARING PLATE	MISC.	MISCELLANEOUS
BTWN.	BETWEEN	MP_	MASONRY PIER
C.	CENTERLINE	NBL	NON BEARING LINTEL
CANT.	CANTILEVER	(N)	NEW
C.J.	CONSTRUCTION JOINT	N.T.S.	NOT TO SCALE
CMU	CONCRETE MASONRY UNIT	N.W.	NORMAL WEIGHT
CNTR.	CENTER/CENTERED	o/c	ON CENTER
COL.	COLUMN	P.A.F.	POWDER ACTUATED FASTENER
CONC.	CONCRETE	PL	PLATE
CONN.	CONNECTION	PLUMB.	PLUMBING
CONT.	CONTINUOUS	PC	PILE CAP
COORD.	COORDINATE	P/C	PRECAST
Ø	DIAMETER	PSF	POUNDS PER SQUARE FOOT
DWG.	DRAWING	PSI	POUNDS PER SQUARE INCH
(E)	EXISTING	PTN.	PARTITION
EA.	EACH	REINF.	REINFORCEMENT
E.F.	EACH FACE	REQ'D.	REQUIRED
EL.	ELEVATION	RET'G.	RETAINING
ELECT.	ELECTRICAL	S.F.	STEP FOOTING
ELEV.	ELEVATOR	S.O.G.	SLAB ON GRADE
EMBED.	EMBEDMENT	SCHED.	SCHEDULE
E.O.D.	EDGE OF DECK	SECT.	SECTION
E.O.S.	EDGE OF SLAB	SIM.	SIMILAR
EQ.	EQUAL	SPECS.	SPECIFICATIONS
EQUIP.	EQUIPMENT	STL.	STEEL
E.W.	EACH WAY	STIFF.	STIFFENER
EWB	EACH WAY BOTTOM	STRUCT.	STRUCTURAL
EWY	EACH WAY TOP	SWB	SHORT WAY BOTTOM
EXIST.	EXISTING	T&B	TOP AND BOTTOM
EXP.	EXPANSION	T.	TOP
EXT.	EXTERIOR	T.O.	TOP OF
FDN.	FOUNDATION	T.O.C.	TOP OF CONCRETE
FIN.	FINISH	T.O.S.	TOP OF STEEL
FLR.	FLOOR	T.S.	THICKENED SLAB
FT.	FEET	TCELE	TOP CHORD EXTENSION LEFT END
FTG.	FOOTING	TCERE	TOP CHORD EXTENSION RIGHT END
G.A.	GAGE	TDS	TURN DOWN SLAB
GALV.	GALVANIZED	THK.	THICK OR THICKENED
GB_	GRADE BEAM	TYP.	TYPICAL
H.P.	HIGH POINT	U.N.O.	UNLESS NOTED OTHERWISE
HORIZ.	HORIZONTAL	V.I.F.	VERIFY IN FIELD
I.F.	INSIDE FACE	VERT.	VERT.
IN.	INCHES	W.R.T.	WOOD ROOF TRUSS
INFO.	INFORMATION	W/	WITH
INT.	INTERIOR	WC	WET COLUMN
JT.	JOINT	WP	WALL PLATE
k	KIP	WWF	WELDED WIRE FABRIC
k-ft	KIP-FEET		

100% CONSTRUCTION DOCUMENTS
FULLY SPRINKLERED

			CONSULTANTS:		MILLER-REMICK LLC PROFESSIONAL ENGINEER		ARCHITECT / ENGINEERS:		Drawing Title STRUCTURAL NOTES AND ABBREVIATIONS		Project Title RENOVATE SURGICAL SERVICE & UPGRADE OPERATING ROOMS		Project Number 581-13-101		Office of Construction and Facilities Management  Department of Veterans Affairs			
							 Miller-Remick LLC M.E.P. & Structural Engineering A Service Disabled Veteran Owned Small Business 1010 KINGS HIGHWAY SOUTH CHERRY HILL, NEW JERSEY 08034 PHONE: (856)429-4000 FAX: (856)429-5002				Approved: Medical Center Director		Location HUNTINGTON, WV				Building Number 1S	
											Date 01-15-2016		Checked ST				Drawn DS	
NO. DESCRIPTION DATE																		

three inches = one foot
one and one half inches = one foot
one inch = one foot
three quarters inch = one foot
three eighths inch = one foot
one half inch = one foot
one quarter inch = one foot
three sixteenths inch = one foot
one eighth inch = one foot
one sixteenth inch = one foot



1 PLAN
SCALE: 3/16" = 1'-0"

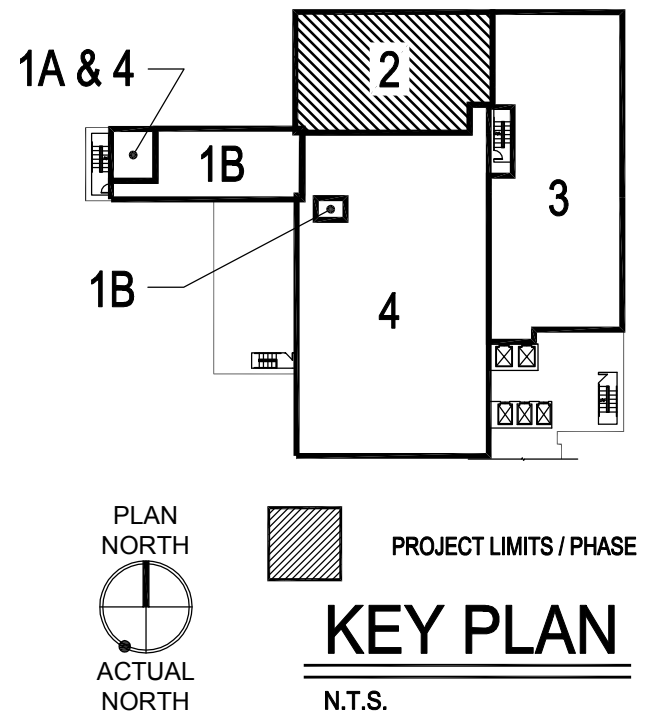
NOTE:
1. TOP OF EXISTING FOURTH FLOOR CONCRETE SLAB ELEVATION IS 0'-0" BASED ON REFERENCE DATUM EL. 936'-11 1/2".
2. CONTRACTOR TO COORDINATE SIZE AND LOCATION OF CONCRETE ROOF OPENING WITH APPROVED MECHANICAL DUCTWORK.

SHEET NOTES:

1. INFORMATION OF EXISTING STRUCTURES SHOWN ON THIS DRAWING IS BASED UPON THE FOLLOWING DRAWINGS AS PREPARED BY SILLING ASSOCIATES, INC., DATED AUGUST 1, 1988:
1-S6-FOURTH FRAMING PLAN-BUILDING 1.
1-S10-CONCRETE COLUMN SCHEDULE-BUILDING 1.
1-S11-CONCRETE BEAM SCHEDULE-BUILDING 1.
1-S15-SECTIONS NEW ADDITION.
2. LIMITS OF DEMOLITION SHOWN SHALL BE COORDINATED WITH SELECTED EQUIPMENT.
3. DEVIATIONS FROM SLAB OPENINGS SHOWN SHALL BE APPROVED BY THE ENGINEER.
4. (REF.) DENOTES DIMENSION REFERENCED FROM EXISTING DRAWINGS.
5. DENOTES LIMIT OF DEMOLITION

SELECTIVE DEMOLITION NOTES:

1. CONDUCT DEMOLITION OPERATIONS TO PREVENT INJURY TO PERSONS AND DAMAGE TO STRUCTURES, FACILITIES AND SITE IMPROVEMENTS TO REMAIN. ENSURE SAFE PASSAGE OF PERSONS AROUND SELECTIVE DEMOLITION AREA AND OPENINGS PER OSHA REQUIREMENTS.
2. DEMOLISH AND REMOVE EXISTING CONSTRUCTION TO THE EXTENT INDICATED ON THE DRAWINGS, OR AS OTHERWISE NECESSARY TO ACCOMMODATE NEW CONSTRUCTION. USE METHODS REQUIRED TO COMPLETE WORK WITHIN LIMITATIONS OF GOVERNING REGULATIONS.
3. SHORE UP EXISTING CONCRETE SLAB AS REQUIRED AND RELOCATE EXISTING UTILITIES PRIOR TO THE START OF DEMOLITION.
4. PROMPTLY PATCH AND REPAIR DAMAGED SURFACES IN ADJOINING CONSTRUCTION TO REMAIN, WHICH ARE CAUSED BY SELECTIVE DEMOLITION OPERATIONS.
5. THE VA WILL USE AND OCCUPY PORTIONS OF THE FACILITY AND SITE IMMEDIATELY ADJACENT TO SELECTIVE DEMOLITION AREA. CONDUCT SELECTIVE DEMOLITION SO THAT VA'S OPERATIONS WILL NOT BE DISRUPTED. PROVIDE NOT LESS THAN 72 HOURS' NOTICE TO THE VA OF ACTIVITIES THAT WILL AFFECT VA'S OPERATIONS. THE VA ASSUMES NO RESPONSIBILITY FOR ACTUAL CONDITIONS OF COMPONENTS AND SITE ELEMENTS TO BE SELECTIVELY DEMOLISHED.
7. PROMPTLY DISPOSE OF DEMOLISHED MATERIALS OFF-SITE. DO NOT PERMIT DEMOLISHED MATERIALS TO ACCUMULATE ON-SITE. TRANSPORT DEMOLISHED MATERIALS OFF THE VA'S PROPERTY AND DISPOSE OF IN A SAFE AND LAWFUL MANNER.



100% CONSTRUCTION DOCUMENTS
FULLY SPRINKLERED

--	--	--	--	--	--	--	--	--	--	--	--	--	--	--	--	--	--	--	--	--	--	--	--	--	--	--	--	--	--	--	--	--	--	--	--	--	--	--	--	--	--	--	--	--	--	--	--	--	--	--	--	--	--	--	--	--	--	--	--	--	--	--	--	--	--	--	--	--	--	--	--	--	--	--	--	--	--	--	--	--	--	--	--	--	--	--	--	--	--	--	--	--	--	--	--	--	--	--	--	--	--	--	--	--	--	--	--	--	--	--	--	--	--	--	--	--	--	--	--	--	--	--	--	--	--	--	--	--	--	--	--	--	--	--	--	--	--	--	--	--	--	--	--	--	--	--	--	--	--	--	--	--	--	--	--	--	--	--	--	--	--	--	--	--	--	--	--	--	--	--	--	--	--	--	--	--	--	--	--	--	--	--	--	--	--	--	--	--	--	--	--	--	--	--	--	--	--	--	--	--	--	--	--	--	--	--	--	--	--	--	--	--	--	--	--	--	--	--	--	--	--	--	--	--	--	--	--	--	--	--	--	--	--	--	--	--	--	--	--	--	--	--	--	--	--	--	--	--	--	--	--	--	--	--	--	--	--	--	--	--	--	--	--	--	--	--	--	--	--	--	--	--	--	--	--	--	--	--	--	--	--	--	--	--	--	--	--	--	--	--	--	--	--	--	--	--	--	--	--	--	--	--	--	--	--	--	--	--	--	--	--	--	--	--	--	--	--	--	--	--	--	--	--	--	--	--	--	--	--	--	--	--	--	--	--	--	--	--	--	--	--	--	--	--	--	--	--	--	--	--	--	--	--	--	--	--	--	--	--	--	--	--	--	--	--	--	--	--	--	--	--	--	--	--	--	--	--	--	--	--	--	--	--	--	--	--	--	--	--	--	--	--	--	--	--	--	--	--	--	--	--	--	--	--	--	--	--	--	--	--	--	--	--	--	--	--	--	--	--	--	--	--	--	--	--	--	--	--	--	--	--	--	--	--	--	--	--	--	--	--	--	--	--	--	--	--	--	--	--	--	--	--	--	--	--	--	--	--	--	--	--	--	--	--	--	--	--	--	--	--	--	--	--	--	--	--	--	--	--	--	--	--	--	--	--	--	--	--	--	--	--	--	--	--	--	--	--	--	--	--	--	--	--	--	--	--	--	--	--	--	--	--	--	--	--	--	--	--	--	--	--	--	--	--	--	--	--	--	--	--	--	--	--	--	--	--	--	--	--	--	--	--	--	--	--	--	--	--	--	--	--	--	--	--	--	--	--	--	--	--	--	--	--	--	--	--	--	--	--	--	--	--	--	--	--	--	--	--	--	--	--	--	--	--	--	--	--	--	--	--	--	--	--	--	--	--	--	--	--	--	--	--	--	--	--	--	--	--	--	--	--	--	--	--	--	--	--	--	--	--	--	--	--	--	--	--	--	--	--	--	--	--	--	--	--	--	--	--	--	--	--	--	--	--	--	--	--	--	--	--	--	--	--	--	--	--	--	--	--	--	--	--	--	--	--	--	--	--	--	--	--	--	--	--	--	--	--	--	--	--	--	--	--	--	--	--	--	--	--	--	--	--	--	--	--	--	--	--	--	--	--	--	--	--	--	--	--	--	--	--	--	--	--	--	--	--	--	--	--	--	--	--	--	--	--	--	--	--	--	--	--	--	--	--	--	--	--	--	--	--	--	--	--	--	--	--	--	--	--	--	--	--	--	--	--	--	--	--	--	--	--	--	--	--	--	--	--	--	--	--	--	--	--	--	--	--	--	--	--	--	--	--	--	--	--	--	--	--	--	--	--	--	--	--	--	--	--	--	--	--	--	--	--	--	--	--	--	--	--	--	--	--	--	--	--	--	--	--	--	--	--	--	--	--	--	--	--	--	--	--	--	--	--	--	--	--	--	--	--	--	--	--	--	--	--	--	--	--	--	--	--	--	--	--	--	--	--	--	--	--	--	--	--	--	--	--	--	--	--	--	--	--	--	--	--	--	--	--	--	--	--	--	--	--	--	--	--	--	--	--	--	--	--	--	--	--	--	--	--	--	--	--	--	--	--	--	--	--	--	--	--	--	--	--	--	--	--	--	--	--	--	--	--	--	--	--	--	--	--	--	--	--	--	--	--	--	--	--	--	--	--	--	--	--	--	--	--	--	--	--	--	--	--	--	--	--	--	--	--	--	--	--	--	--	--	--	--	--	--	--	--	--	--	--	--	--	--	--	--	--	--	--	--	--	--	--	--	--	--	--	--	--	--	--	--	--	--	--	--	--	--	--	--	--	--	--	--	--	--	--	--	--	--	--	--	--	--	--	--	--	--	--	--	--	--	--	--	--	--	--	--	--	--	--	--	--	--	--	--	--	--	--	--	--	--	--	--	--	--	--	--	--	--	--	--	--	--	--	--	--	--	--	--	--	--	--	--	--	--	--	--	--	--	--	--	--	--	--	--	--	--	--	--	--	--	--	--	--	--	--	--	--	--	--	--	--	--	--	--	--	--	--	--	--	--	--	--	--	--	--	--	--	--	--	--	--	--	--	--	--	--	--	--	--	--	--	--	--	--	--	--	--	--	--	--	--	--	--	--	--	--	--	--	--	--	--	--	--	--	--	--	--	--	--	--	--	--	--	--	--	--	--	--	--	--	--	--	--	--	--	--	--	--	--	--	--	--	--	--	--	--	--	--	--	--	--	--	--	--	--	--	--	--	--	--	--	--	--	--	--	--	--	--	--	--	--	--	--	--	--	--	--	--	--	--	--	--	--	--	--	--	--	--	--	--	--	--	--	--	--	--	--	--	--	--	--	--	--	--	--	--	--	--	--	--	--	--	--	--	--	--	--	--	--	--	--	--	--	--	--	--	--	--	--	--	--	--	--	--	--	--	--	--	--	--	--	--	--	--	--	--	--	--	--	--	--	--	--	--	--	--	--	--	--	--	--	--	--	--	--	--	--	--	--	--	--	--	--	--	--	--	--	--	--	--	--	--	--	--	--	--	--	--	--	--	--	--	--	--	--	--	--	--	--	--	--	--	--	--	--	--	--	--	--	--	--	--	--	--	--	--	--	--	--	--	--	--	--	--	--	--	--	--	--	--	--	--	--	--	--	--	--	--	--	--	--	--	--	--	--	--	--	--	--	--	--	--	--	--	--	--	--	--	--	--	--	--	--	--	--	--	--	--	--	--	--	--	--	--	--	--	--	--	--	--	--	--	--	--	--	--	--	--	--	--	--	--	--	--	--	--	--	--	--	--	--	--	--	--	--	--	--	--	--	--	--	--	--	--	--	--	--	--	--	--	--	--	--	--	--	--	--	--	--	--	--	--	--	--	--	--	--	--	--	--	--	--	--	--	--	--	--	--	--	--	--	--	--	--	--	--	--	--	--	--	--	--	--	--	--