

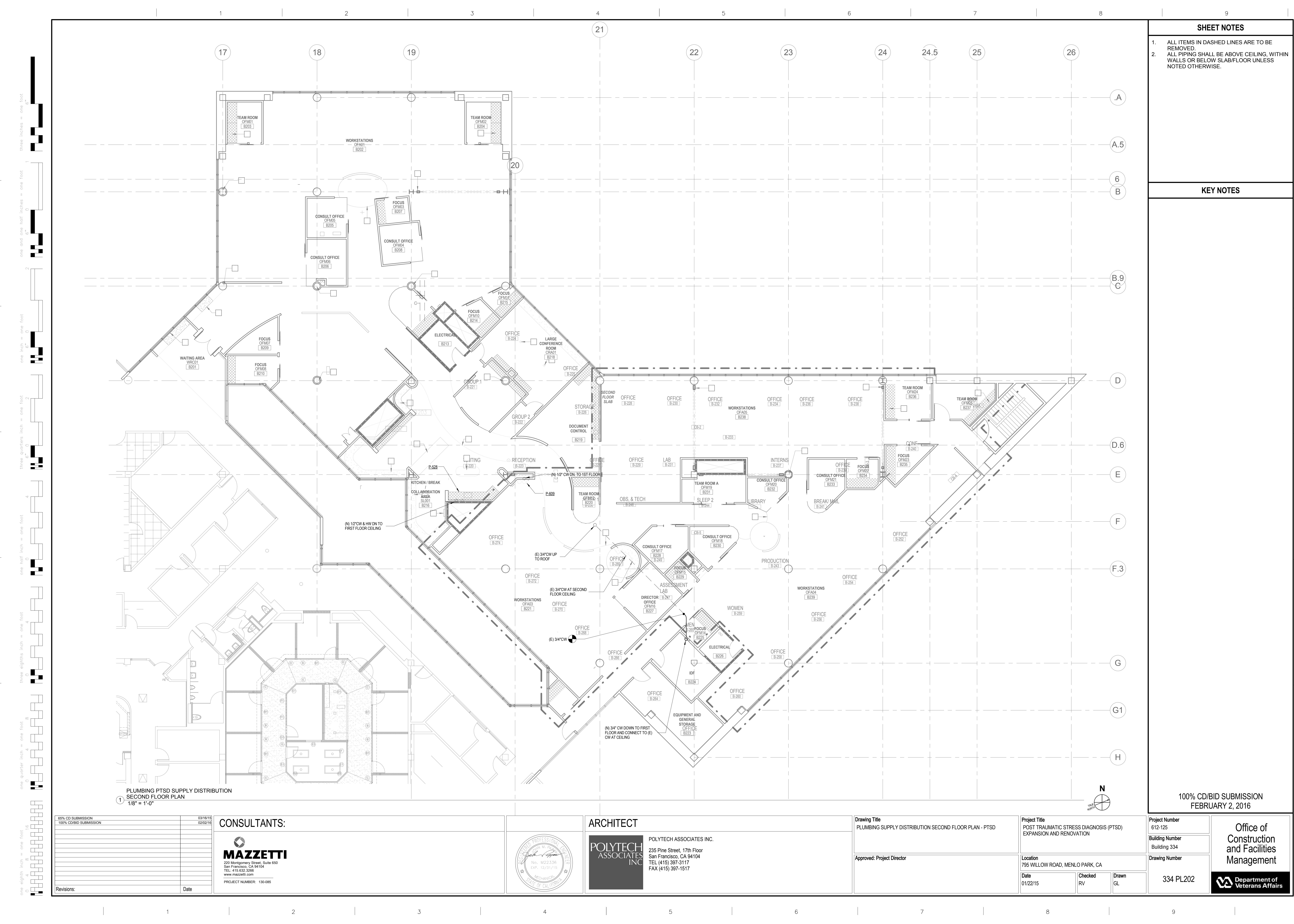
9

100% CD/BID SUBMISSION
FEBRUARY 2, 2016

334 PD201



100% CD/BID SUBMISSION
FEBRUARY 2, 2016



SHEET NOTES

- ALL ITEMS IN DASHED LINES ARE TO BE REMOVED.
- ALL PIPING SHALL BE ABOVE CEILING, WITHIN WALLS OR BELOW SLAB/FLOOR UNLESS NOTED OTHERWISE.

KEY NOTES

100% CD/BID SUBMISSION
FEBRUARY 2, 2016

Project Number
612-125
Building Number
334
Drawing Number

334 PL202

Office of
Construction
and Facilities
Management



ARCHITECT

POLYTECH ASSOCIATES INC.
235 Pine Street, 17th Floor
San Francisco, CA 94104
TEL (415) 397-3117
FAX (415) 397-1517



CONSULTANTS:

MAZZETTI
220 Montgomery Street, Suite 650
San Francisco, CA 94104
TEL: 415.632.3266
www.mazzetti.com
PROJECT NUMBER: 130-085

Drawing Title

PLUMBING SUPPLY DISTRIBUTION SECOND FLOOR PLAN - PTSD

Approved: Project Director

Project Title


POST TRAUMATIC STRESS DIAGNOSIS (PTSD)
EXPANSION AND RENOVATION

Location
795 WILLOW ROAD, MENLO PARK, CA

Date
01/22/15

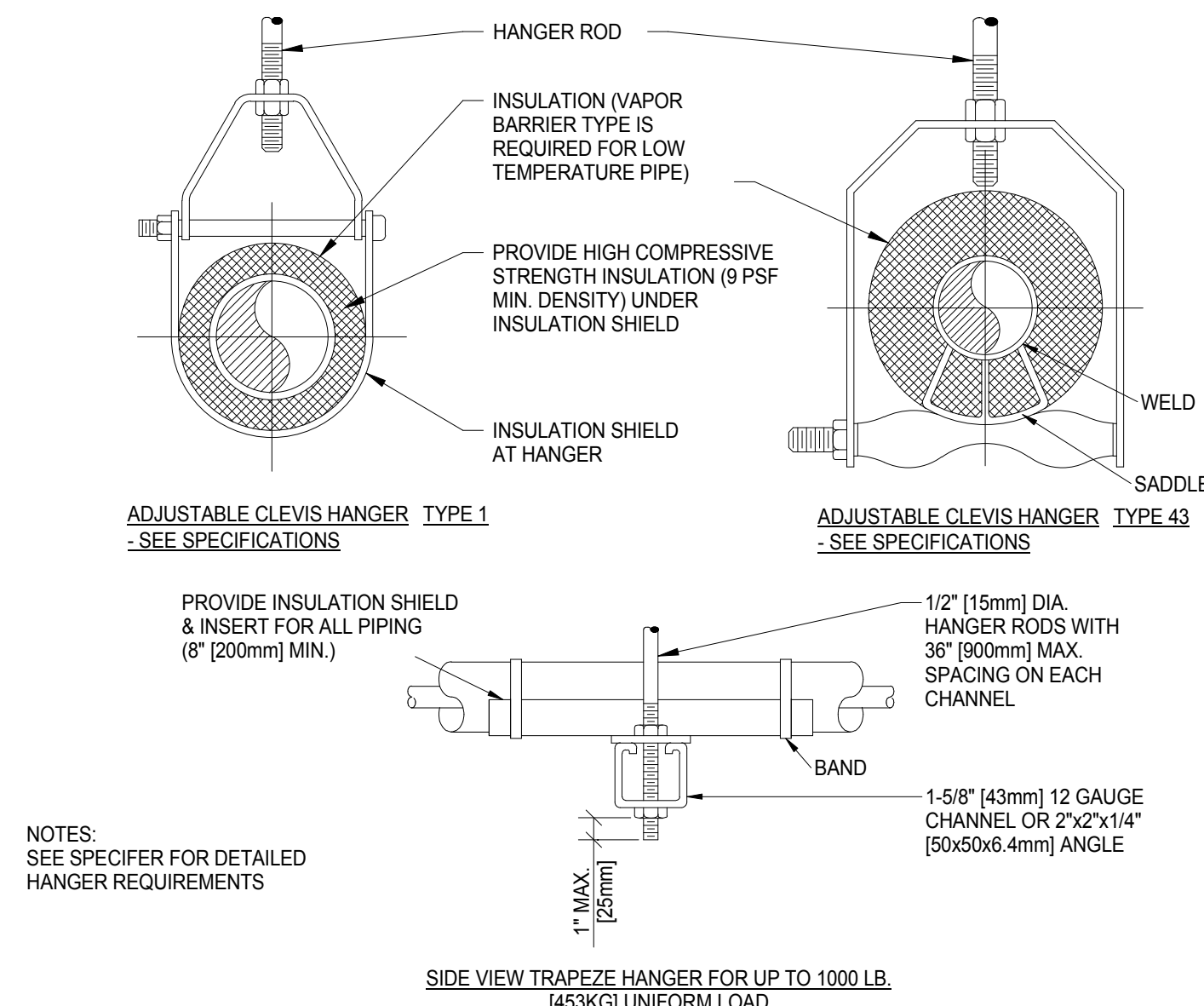
Checked
RV

Drawn
GL

SHEET NOTES	
1.	ALL ITEMS IN DASHED LINES ARE TO BE REMOVED.
KEY NOTES	
100% CD/BID SUBMISSION FEBRUARY 2, 2016	
Project Number 612-125	Office of Construction and Facilities Management
Building Number Building 334	
Drawing Number 334 PL203	
 Department of Veterans Affairs	

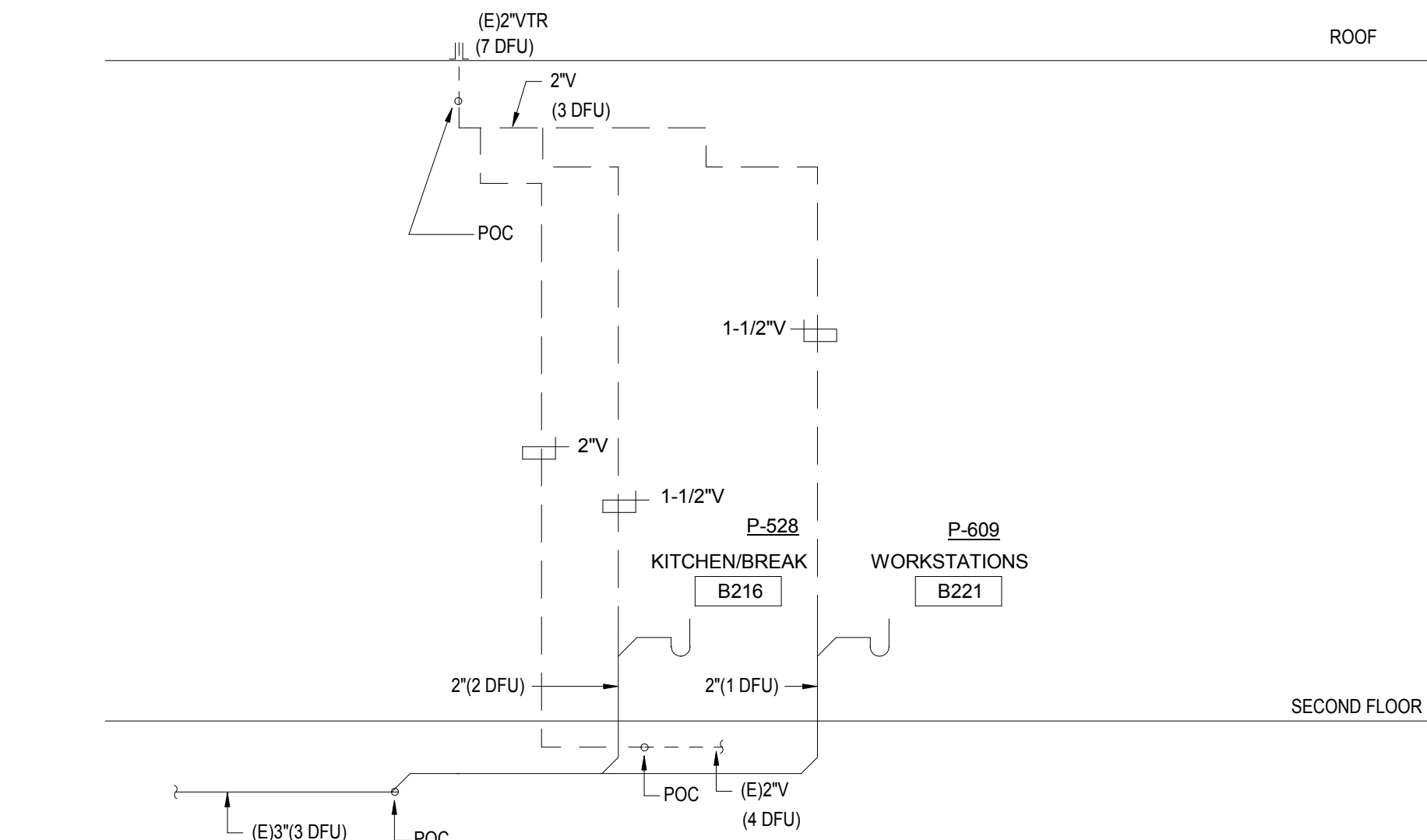
one eighth inch = one foot
one quarter inch = one foot
three eighths inch = one foot
one half inch = one foot
three quarters inch = one foot
one inch = one foot
one and one half inches = one foot
two inches = one foot
three inches = one foot
four inches = one foot
five inches = one foot
six inches = one foot
seven inches = one foot
eight inches = one foot
nine inches = one foot
ten inches = one foot
eleven inches = one foot
twelve inches = one foot
thirteen inches = one foot
fourteen inches = one foot
fifteen inches = one foot
sixteen inches = one foot
seventeen inches = one foot
eighteen inches = one foot
nineteen inches = one foot
twenty inches = one foot
twenty one inches = one foot
twenty two inches = one foot
twenty three inches = one foot
twenty four inches = one foot
twenty five inches = one foot
twenty six inches = one foot
twenty seven inches = one foot
twenty eight inches = one foot
twenty nine inches = one foot
thirty inches = one foot
thirty one inches = one foot
thirty two inches = one foot
thirty three inches = one foot
thirty four inches = one foot
thirty five inches = one foot
thirty six inches = one foot
thirty seven inches = one foot
thirty eight inches = one foot
thirty nine inches = one foot
forty inches = one foot
forty one inches = one foot
forty two inches = one foot
forty three inches = one foot
forty four inches = one foot
forty five inches = one foot
forty six inches = one foot
forty seven inches = one foot
forty eight inches = one foot
forty nine inches = one foot
fifty inches = one foot
fifty one inches = one foot
fifty two inches = one foot
fifty three inches = one foot
fifty four inches = one foot
fifty five inches = one foot
fifty six inches = one foot
fifty seven inches = one foot
fifty eight inches = one foot
fifty nine inches = one foot
sixty inches = one foot
sixty one inches = one foot
sixty two inches = one foot
sixty three inches = one foot
sixty four inches = one foot
sixty five inches = one foot
sixty six inches = one foot
sixty seven inches = one foot
sixty eight inches = one foot
sixty nine inches = one foot
seventy inches = one foot
seventy one inches = one foot
seventy two inches = one foot
seventy three inches = one foot
seventy four inches = one foot
seventy five inches = one foot
seventy six inches = one foot
seventy seven inches = one foot
seventy eight inches = one foot
seventy nine inches = one foot
eighty inches = one foot
eighty one inches = one foot
eighty two inches = one foot
eighty three inches = one foot
eighty four inches = one foot
eighty five inches = one foot
eighty six inches = one foot
eighty seven inches = one foot
eighty eight inches = one foot
eighty nine inches = one foot
ninety inches = one foot
ninety one inches = one foot
ninety two inches = one foot
ninety three inches = one foot
ninety four inches = one foot
ninety five inches = one foot
ninety six inches = one foot
ninety seven inches = one foot
ninety eight inches = one foot
ninety nine inches = one foot
one hundred inches = one foot

PLUMBING FIXTURE SCHEDULE														
MARK	DESCRIPTION	WASTE PIPE		VENT PIPE		COLD WATER		HOT WATER		WASTE FIXTURE UNITS	WATER FIXTURE UNITS	WRIST BLADE HANDLES	ELECTRIC SENSOR	REMARKS, REFER TO NOTES BELOW
		IN.	[mm]	IN.	[mm]	IN.	[mm]	IN.	[mm]					
P-517	SINK, CRS, ADA	2	[50]	1.5	[36]	0.5	[13]	0.5	[13]	2	2	YES	NO	SINGLE COMPARTMENT, COUNTER TOP, ACCESSIBLE.
P-518	SINK, CRS, ADA	2	[50]	1.5	[36]	0.5	[13]	0.5	[13]	2	2	NO	YES	SINGLE COMPARTMENT, COUNTER TOP, ACCESSIBLE.
P-528	SINK, CRS, ADA	2	[50]	1.5	[36]	0.75	[19]	0.75	[19]	2	2	YES	NO	SINGLE COMPARTMENT, COUNTER TOP, ACCESSIBLE.
P-609	ELECTRIC WATER COOLER, ADA	2	[50]	1.5	[36]	0.5	[13]	-	-	1	1	N/A	NO	H/L/O - DUAL HEIGHT, ACCESSIBLE, 120V/1PH/60HZ.
P-801	WALL HYDRANT	-	-	-	-	0.75	[19]	-	-	-	-	N/A	NO	
P-707	EMERGENCY SHOWER EYE & FACE WASH	-	-	-	-	1.5	[40]	0.75	[19]	-	-	N/A	NO	WITH INTEGRAL THERMOSTATIC MIXING VALVE SET AT 80 DEGREE F
NOTES: 1. PROVIDE ALL REQUIRED FITTINGS AND ACCESSORIES FOR COMPLETE INSTALLATION, INCLUDING SHUT OFFS/STOPS, ESCUTCHEON PLATES, CHROME PLATED BRASS P-TRAPS AND FIXTURE CARRIERS (AND FOR LAVATORIES, GRID STRAINERS, UNLESS NOTED OTHERWISE). FOR MORE INFORMATION, SEE SPECIFICATION SECTION # 22-4000. 2. ALL EXPOSED WASTE AND HOT WATER PIPE AT ADA LAV. OR SINK FIXTURES SHALL BE COVERED WITH PROTECTIVE WRAP, TRUE BRO "LAVSHIELD" OR EQUAL. 3. PLUMBING FIXTURES MUST COMPLY WITH AB1953 - CALIFORNIA LEAD PLUMBING LAW. 4. THE FORCE REQUIRED TO ACTIVATE ACCESSIBLE FAUCET CONTROLS SHALL BE NO GREATER THAN 5 POUNDS.														

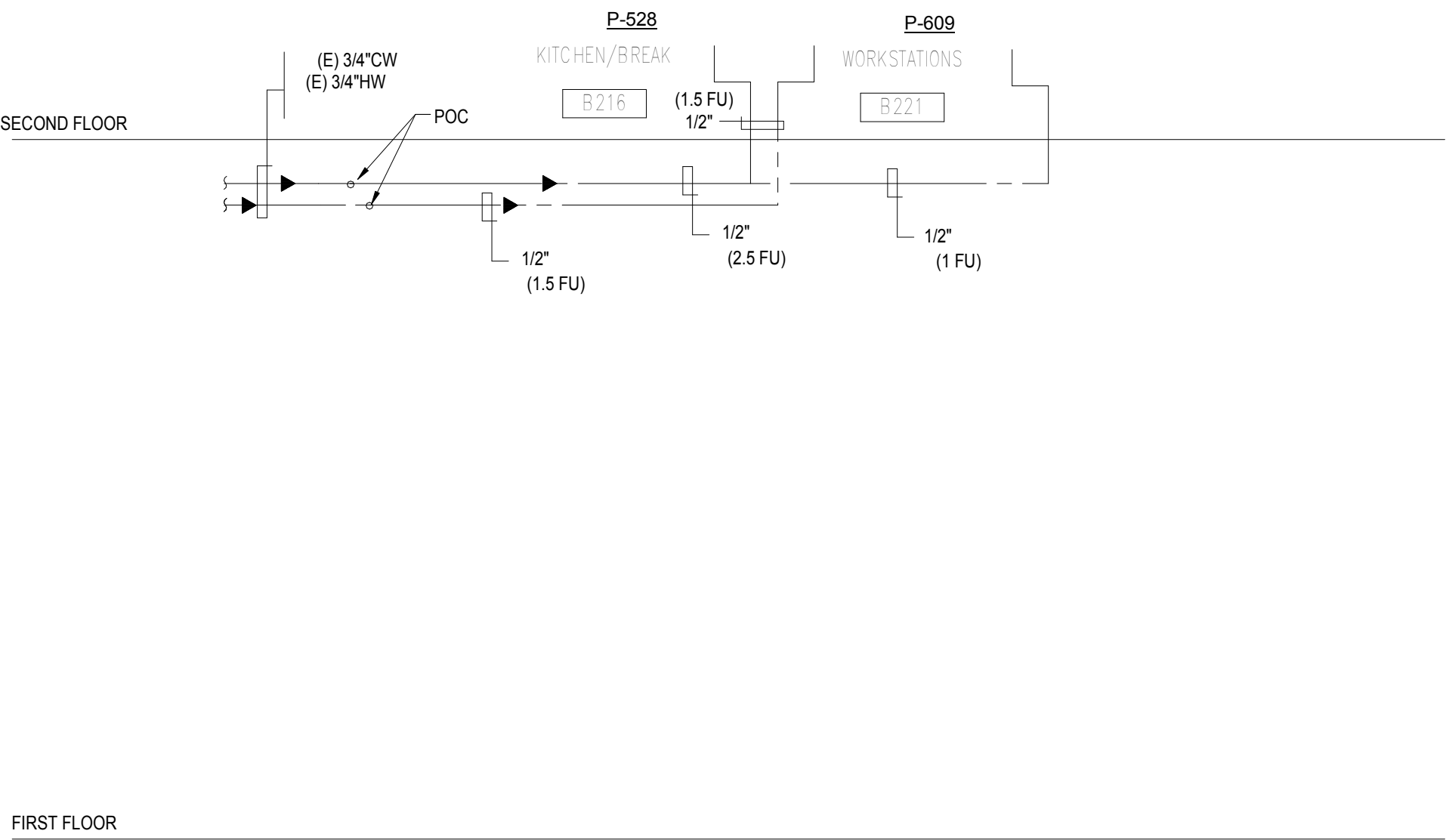


MAXIMUM PIPE/TUBING SUPPORT SPACING																					
NOM. SIZE	IN.	THRU 3/4	1	1 1/4	1 1/2	2	2 1/2	3	4	5	6	8	10	12	14	16	18	20	24		
	FT.	[2100]	[2100]	[2700]	[3000]	[3400]	[3700]	[4100]	[4600]	[5200]	[5800]	[6700]	[7000]	[7600]	[8200]	[8600]	[9100]	[9600]			
PIPE	FT.	[2100]	[2100]	[2700]	[3000]	[3400]	[3700]	[4100]	[4600]	[5200]	[5800]	[6700]	[7000]	[7600]	[8200]	[8600]	[9100]	[9600]			
TUBING	FT.	5 FT	6	7	8	8	9	10	12	13	14	16	-	-	-	-	-	-	-		
	[mm]	[1500]	[1800]	[2100]	[2400]	[2400]	[2700]	[3000]	[3700]	[4000]	[4100]	[4900]									
NOTE: FOR TRAPEZE HANGER TAKE SPACING OF SMALLEST SIZE ON TRAPEZE.																					

3 PIPE HANGERS



1 PLUMBING SANITARY RISER DIAGRAM - PTSD



2 PLUMBING WATER RISER DIAGRAM - PTSD

66% CD SUBMISSION
100% CD/BID SUBMISSION

03/16/19
02/02/16

Revisions:

Date

CONSULTANTS:

MAZZETTI

220 Montgomery Street, Suite 650
San Francisco, CA 94104
TEL: 415.632.3266
www.mazzetti.com

PROJECT NUMBER: 130-085

ARCHITECT

POLYTECH ASSOCIATES INC.

235 Pine Street, 17th Floor
San Francisco, CA 94104
TEL (415) 397-3117
FAX (415) 397-1517

Drawing Title
PLUMBING STANDARD SCHEDULE AND RISER DIAGRAMS

Approved: Project Director

Project Title
POST TRAUMATIC STRESS DIAGNOSIS (PTSD)
EXPANSION AND RENOVATION

Location
795 WILLOW ROAD, MENLO PARK, CA

Date
01/22/15

Checked
RV

Drawn
GL

Project Number
612-125

Building Number
Building 334

Drawing Number
334 PL301

Office of Construction and Facilities Management

100% CD/BID SUBMISSION
FEBRUARY 2, 2016