

SYMBOLS	LIGHTING SYMBOLS	NOTES
	FLUORESCENT LIGHT FIXTURE AND OUTLET BOX	
	DOWN-LIGHT FIXTURE AND OUTLET BOX	
	WALL MOUNTED LIGHT FIXTURE AND OUTLET BOX	
	PENDANT FIXTURE AND OUTLET BOX	
	LINEAR STRIP LIGHT FIXTURE	
	RIGIT PENDANT FIXTURE AND OUTLET BOX	
	DIRECT/INDIRECT OR DIRECT LINEAR FIXTURE AND OUTLET BOX	

SYMBOLS	POWER SYMBOLS	NOTES
	MOTOR OUTLET	
	FUSED DISCONNECT SWITCH SWITCH XXXXX = AMP SWITCH/POLES/AMP FUSE	AF=30A FUSED BF=60A FUSED CF=100A FUSED DF=200A FUSED
	HEAVY DUTY NON-FUSED DISCONNECT SWITCH SWITCH XXXX = AMP SWITCH/POLES	
	COMBINATION MOTOR STARTER	
	MANUAL MOTOR STARTER WITH THERMAL OVERLOAD	
	TRANSFORMER DESIGNATION TRANSFORMER RATING TRANSFORMER	
	TRANSFORMER	
	TRANSFORMER	
	STATIONARY - CIRCUIT BREAKER; RATING AS SHOWN ON PLANS	
	JUNCTION BOX	
	JUNCTION BOX WITH KEYNOTE INDICATES THAT THE JUNCTION BOX IS CONNECTED WITH A WHIP FOR A HARDWIRE CONNECTION PER EQUIPMENT REQUIREMENTS INDICATED IN THE KEYNOTE.	
	PUSH BUTTON STATION	
	FIRE SMOKE DAMPER	
	SURFACE MOUNTED PANELBOARD OR TERMINAL CABINET	
	FLUSH MOUNTED PANELBOARD OR TERMINAL CABINET	
	METER	
	GROUND FAULT INTERRUPTOR	
	GROUND FAULT MONITOR	
	EMERGENCY POWER OFF	

SYMBOLS	DESIGNATION SYMBOLS	NOTES
	COLUMN LINE	
	KEY NOTE TAG	
	EQUIPMENT TAG	
	DETAIL REFERENCE BUBBLE DETAIL NUMBER	
	SHEET BEARING DETAIL	
	MOTOR DESIGNATION TAG	
	FIXTURE DESIGNATION UPPER CASE LETTER INDICATES FIXTURE TYPE. LOWER CASE LETTER INDICATES RELAY SWITCH LEG NUMBER INDICATES CIRCUIT NUMBER (WHERE SHOWN).	
	LETTER INDICATES FIXTURES CONTROL (WHERE SHOWN)	
	NUMBER INDICATES CIRCUIT NUMBER (WHERE SHOWN)	
	SPACE FOR CODE REQUIRED CLEARANCE.	

LUMINAIRE FIXTURE SCHEDULE						
FIXTURE TYPE	LIGHTING FIXTURE DESCRIPTION	VOLTS	LAMPS/ FIXTURES	WATTAGE	BALLAST/ DRIVER	MANUFACTURER/CATALOG NUMBER
A	DECORATIVE LED PENDANT FIXTURE	277	LED	19	0-10v DIM	COOPER LIGHTING 14682P15 7 L3635 UNV
B	HIGH PERFORMANCE LAY-IN FIXTURE	277	LED	36	0-10v DIM	FLUXWERX TRANSOM TRY 24B3530M
C	RECESSED DOWNLIGHT	277	LED	13	0-10v DIM	LIGHTOLIER CAL10NUVB210V CAL10DL36KCCLWVB
C1	RECESSED DOWNLIGHT WALL WASHER	277	LED	13	0-10v DIM	LIGHTOLIER CAL-WW 10NUVB210V - CAL10WW36KCCLWVB 3500K CCL P
D	RIGID PENDANT MOUNT 8-1/4" CYLINDER	277	LED	15	0-10v	BRUCK LIGHTING 112 400 MC 9
E	DIRECT/INDIRECT LINEAR FIXTURE	277	LED	14/FT.	0-10v DIM	FLUXWERX PR1BAC40AXXDDM03
F	DIRECT LINEAR FIXTURE	277	LED	14/FT.	0-10v DIM	FLUXWERX PR1BBC35AXXDDM03
G	DECORATIVE LED PENDANT FIXTURE	277	LED	42	DIM BALLAST	COOPER LIGHTING 10628P1S15/314277VNASWHTC
H	PENDANT FIXTURE ROUND BANQUETTE	277	2-32 W CFL	64	EB	TECH LIGHTING 700 PSP2 TD SO PSUNV
J	DECORATIVE LED PENDANT FIXTURE	277	LED	19	0-10v DIM	TMS CIRCA 6001 32 19 LED -WHITE
K	DECORATIVE LED PENDANT FIXTURE	277	LED	19	0-10v DIM	TMS CIRCA 6002 32 19 LED -WHITE
M	SURFACE MOUNT INDUSTRIAL TYPE	277	LED	30	0-10v DIM	GE DAYBRITE ALBEO ALC 41 T 47 D 4 SV W
N	DECORATIVE PENDANT	277	LED	10	0-10v DIM	SHAPER 441 16"LO635 UNV NA 4-12"X1/2" CANOPY
P	PENDANT WALL WASH	277	LED	14/FT.	0-10v DIM	FINELITE HP-2 WW D FO HO 3500K 277V SC SATIN ALUM
U	UNDERCABINET LIGHTING WITH ON/OFF SW	277	LED	7/FT	0-10v	VODE 707-21-ZZ-ZZ (BUILT ON OFF SW) 0 2 LO 35 1 AL
X	INJECTION MOLDED	277	LED	6		COOPER EEX 1XX6XG
X1	INJECTION MOLDED	277	LED	6		COOPER EEX 2XX6XG
REMARKS: 1. DISTANCE MEASURED FROM BOTTOM OF LUMINAIRE TO ABOVE FLOOR FINISH 2. DIMENSION OF FIXTURE LENGTH SHALL BE MEASURED FROM THE LIGHTING PLAN 3. REFER TO ARCHITECTURAL ELEVATION DRAWING FOR EXACT MOUNTING HEIGHT 4. REFER TO THE RCP FOR EXACT LUMINAIRE LOCATION.						

ABBREVIATIONS	NOTES
A, AMP	AMPERE
ABC	ABOVE THE COUNTER, 4" ABOVE THE BACKSPASH, UON
AIC	AMPERE INTERRUPTING CAPACITY
AFF	ABOVE FINISHED FLOOR
AFG	ABOVE FINISHED GROUND
AF	FRAME RATING IN AMPERES
AS	SWITCH RATING IN AMPERES
AT	TRIP RATING IN AMPERES
AWG	AMERICAN WIRE GAUGE
C	CONDUIT
CL	CENTERLINE
CEC	CALIFORNIA ELECTRICAL CODE
CKT	CIRCUIT
CLG	CEILING
DC	DIRECT CURRENT
DIST	DISTRIBUTION
(E)	EXISTING TO REMAIN
(ER)	REMOVE EXISTING.
(EL)	RELOCATE EXISTING.
EC	EMPTY CONDUIT
ELEC	ELECTRICAL
EMER	EMERGENCY
EMT	ELECTRICAL METALLIC TUBING
EVH	ELECTRIC WATER HEATER
FA	FIRE ALARM
FACP	FIRE ALARM CONTROL PANEL
GFCI	GROUND FAULT CIRCUIT INTERRUPTING
GFP	GROUND FAULT RELAY
G, GND	GROUND
IG	ISOLATED GROUND.
HP	HORSEPOWER
LCP	LIGHTING CONTROL PANEL
MECH	MECHANICAL
MCB	MAIN CIRCUIT BREAKER
NC	NORMALLY CLOSED
NEC	NATIONAL ELECTRIC CODE
NEMA	NATIONAL ELECTRICAL MANUFACTURER'S ASSOCIATION
NO	NORMALLY OPEN
NTS	NOT TO SCALE
OCFI	OWNER FURNISHED CONTRACTOR INSTALLED
PB	PULL BOX
PH	PHASE
PNL	PANEL
PWR	POWER
RSC	RIGID STEEL CONDUIT
SWBD	SWITCHBOARD
SYS	SYSTEM
TEL	TELEPHONE
TYP	TYPICAL
UON	UNLESS OTHERWISE NOTED
V	VOLT
VA	VOLT AMPERES
W	WATT
XFMR	TRANSFORMER
VD	PER COUNT VOLTAGE DROP %

SYMBOLS	WIRING DEVICE SYMBOLS	NOTES
	20A, 125V, DUPLEX RECEPTACLE OUTLET; +18" A.F.F. TO CENTERLINE. (*=PLUG LOAD CONNECTED)	
	20A, 125V, DOUBLE DUPLEX RECEPTACLE OUTLET; +18" A.F.F. TO CENTERLINE. (*=PLUG LOAD CONNECTED)	
	20A, 125V, DOUBLE DUPLEX RECEPTACLE OUTLET; SPECIAL MOUNTING HEIGHT; MOUNT AS NOTED ON PLANS OR SEE SPECIFICATIONS	
	20A, 125V, DUPLEX RECEPTACLE; SPECIAL MOUNTING HEIGHT; MOUNT AS NOTED ON PLANS OR SEE SPECIFICATION	
	RACEWAY SYSTEM - TYPE , OUTLETS, SPACING AND FINISH AS NOTED	
	20A, 125V, SINGLE RECEPTACLE OUTLET; +18" A.F.F. TO CENTERLINE	
	20A, 125V, SINGLE RECEPTACLE OUTLET; SPECIAL MOUNTING HEIGHT; MOUNT AS NOTED ON PLANS OR SEE SPECIFICATIONS	
	20A, 125V, DUPLEX RECEPTACLE WITH ISOLATED GROUND; +18" A.F.F. TO CENTERLINE	
	20A, 125V, DUPLEX RECEPTACLE GFCI WITH WEATHER PROOF COVER; +18" A.F.F. TO CENTERLINE	
	20A, 125V, DUPLEX RECEPTACLE; CEILING MOUNTED	
	20A, 125V, DUPLEX RECEPTACLE; GFCI TYPE; +18" A.F.F. TO CENTERLINE	
	20A, 125V, DUPLEX RECEPTACLE; GFCI TYPE; SPECIAL MOUNTING HEIGHT; MOUNT AS NOTED ON PLANS OR SEE SPECIFICATIONS	
	20A, 125V, DOUBLE DUPLEX RECEPTACLE; GFCI TYPE; SPECIAL MOUNTING HEIGHT; MOUNT AS NOTED ON PLANS OR SEE SPECIFICATIONS	
	20A, 125V, DUPLEX RECEPTACLE OUTLET; FLOOR MOUNTED. (*=PLUG LOAD CONNECTED)	
	20A, 125V, DOUBLE DUPLEX RECEPTACLE OUTLET; FLOOR MOUNTED. (*=PLUG LOAD CONNECTED)	
	LOW VOLTAGE CONTROL Q = LAMINAIRE CONTROLLED RELAY AT LCP	
	SINGLE POLE SWITCH	
	TWO SINGLE POLE SWITCHES UNDER COMMON FACEPLATE; EACH SWITCH OPERATES ONE BALLAST IN FIXTURES IT CONTROLS	
	THREE WAY SWITCH	
	DIMMER SWITCH	
	SINGLE POLE WEATHERPROOF SWITCH	
	MOMENTARY CONTACT SWITCH	
	OCCUPANCY LIGHT CONTROL SWITCH; CEILING MOUNTED	
	OCCUPANCY LIGHT CONTROL SWITCH; WALL MOUNTED	
	OCCUPANCY LIGHT CONTROL DIMMER SWITCH; WALL MOUNTED	
	PHOTOCELL/DAYLIGHT SENSOR; CEILING MOUNTED	
	LIGHTING RELAY UL924 DEVICE	
	EXIT SIGN WALL MOUNTED; ARROWS INDICATE DIRECTIONS	
	EXIT SIGN CEILING MOUNTED; ARROWS INDICATE DIRECTIONS	

GENERAL NOTES

- SCHEDULE WORK IN EXISTING BUILDINGS WITH THE OWNER. MINIMIZE DISRUPTION OF NORMAL OPERATIONS.
- REMOVE WIRING DEVICES, FIXTURES, COMPONENTS, ELECTRICAL EQUIPMENT, AND BOXES NOT REQUIRED TO REMAIN IN SERVICE IN REMODELED AREAS WHEN THIS PROJECT IS COMPLETE.
 - REMOVE WIRE, CONDUITS, AND BOXES FOR SUCH DEVICES BACK TO SOURCE. WHERE A CIRCUIT IS INTERRUPTED BY SUCH REMOVAL OF A DEVICE OR FIXTURE FROM THAT CIRCUIT, INSTALL WIRE AND CONDUIT AS REQUIRED TO RESTORE SERVICE TO THE REMAINING DEVICES AND FIXTURES ON THAT CIRCUIT.
 - WHERE THIS WORK IS NOT POSSIBLE WITHOUT DISTURBING AREAS NOT BEING RENOVATED, CONSULT WITH THE ARCHITECT BEFORE PERFORMING THE WORK.
 - LEAVE IN PLACE CONCEALED CONDUIT LOCATED IN PARTITIONS OR HARD CEILING NOT TO BE DEMOLISHED. REMOVE CONDUCTORS FROM SUCH CONDUITS. USE PERMANENT FELT TIP MARKER PENS TO LABEL SUCH CONDUITS AS "ABANDONED" AT EACH END, AND NOTE WHERE IT REEMERGES FROM THE CONCEALED AREA. CAP SUCH CONDUITS.
 - WHERE ELECTRICAL CIRCUITS, FEEDERS, OR WIRING RUNS THROUGH A SPACE TO BE DEMOLISHED, MAINTAIN THEM. REPAIR ANY DAMAGE CAUSED BY DEMOLITION OR CONSTRUCTION PERFORMED UNDER THIS CONTRACT.
 - WHERE ELECTRICAL CIRCUITS, FEEDERS, OR WIRING RUNS SERVING OTHER AREAS ARE SERVED FROM THE SPACE TO BE DEMOLISHED, RECONNECT THEM TO OTHER SOURCES AS REQUIRED TO MAINTAIN SERVICE TO THE EXISTING DEVICES.
- WHERE DRAWINGS INDICATE EXISTING ELECTRICAL EQUIPMENT OR DEVICES TO REMAIN IN SERVICE, BE RELOCATED, OR BE RE-USED, REFURBISH THEM. CLEAN SUCH ITEMS AND NOTIFY ARCHITECT OF ANY DEFECTS IN SUCH INSTALLATIONS. REPAIR ANY EXISTING DAMAGE, AND ANY DAMAGE CAUSED BY DEMOLITION OR CONSTRUCTION PERFORMED UNDER THIS CONTRACT.
- DO NOT INSTALL ELECTRICAL BOXES IN RATED WALLS CLOSER TO EACH OTHER THAN 2'-0". PROVIDE "PADDY" PADS OR EQUIVALENT ON EACH BOX INSTALLED.
- SEAL EXISTING PENETRATIONS OF EXISTING WALLS. SEAL PENETRATIONS OF EXISTING WALLS MADE UNDER THIS CONTRACT. SEAL PENETRATIONS OF NEW WALLS BY CONDUITS PROVIDED UNDER THIS CONTRACT. SEAL PENETRATIONS OF NEW WALLS BY EXISTING CONDUITS.
- VISIT THE SITE BEFORE SUBMITTING A BID TO OBSERVE EXISTING CONDITIONS.
- SEE ARCHITECTURAL ELEVATIONS FOR EXACT LOCATIONS OF ALL DEVICES.
- NOT USED.
- REFER TO WIRE COUNTS INDICATED ON PLANS. FOR EACH 20 AMP 120 VOLT OR 277 VOLT CIRCUIT, PROVIDE 1 #12 PHASE CONDUCTOR, 1 #12 NEUTRAL CONDUCTOR, AND 1 #12 GROUNDING CONDUCTOR.
- FURNISH ALL LABOR, MATERIALS, EQUIPMENT & SERVICES NECESSARY TO CONSTRUCT AND INSTALL COMPLETE & OPERATIONAL ELECTRICAL SYSTEMS INDICATED ON THE DRAWINGS & IN THE SPECIFICATIONS.
- CONCEAL ALL CONDUIT UNLESS OTHERWISE SHOWN.
- PROVIDE SEPARATE RACEWAYS FOR EMERGENCY SYSTEM LIFE SAFETY BRANCH AND CRITICAL BRANCH WIRING PER THE REQUIREMENTS OF CEC 517.30(C). LIFE SAFETY BRANCH AND CRITICAL BRANCH OF THE EMERGENCY SYSTEM SHALL BE KEPT ENTIRELY INDEPENDENT OF ALL OTHER WIRING AND EQUIPMENT AND SHALL NOT ENTER THE SAME RACEWAYS, BOXES OR CABINETS WITH EACH OTHER OR OTHER WIRING, EXCEPT AS PERMITTED BY CEC. PROVIDE PERMANENT SEPARATION BARRIERS PER CEC 314.28(D) OR SEPARATE TERMINAL BOXES PER CEC 300.15 TO SEPARATE WIRING PER CEC 517.30(C).
- PROVIDE SEPARATE RACEWAYS AND BOXES FOR CONDUCTORS OF 120/208 VOLT SYSTEM AND 277/480 VOLT SYSTEM AND LOW VOLTAGE WIRING SYSTEM, UNLESS OTHERWISE NOTED.
- ALL EQUIPMENT TO BE INSTALLED OR CONNECTED MUST BE LISTED, LABELED OR CERTIFIED FOR ITS USE BY NATIONALLY RECOGNIZED TESTING LABORATORY (NRTL) AS RECOGNIZED BY THE US DEPARTMENT OF LABOR, OCCUPATIONAL SAFETY HEALTH ADMINISTRATION. OWNER FURNISHED EQUIPMENT SHALL BE LISTED, LABELED OR CERTIFIED FOR ITS USE BY A NATIONALLY RECOGNIZED TESTING LABORATORY.
- EXISTING AND NEW PIPING, DUCTS AND OTHER FOREIGN EQUIPMENT ARE NOT OVER AFFECTED SWITCHBOARD AND PANELBOARDS.
- CURRENT ELECTRICAL CODE IS CEC 2013: THE 2011 NEC WITH 2013 CALIFORNIA AMENDMENTS, ALSO KNOWN AS THE 2013 CALIFORNIA ELECTRICAL CODE.
- HANG AND BRACE ALL UTILITIES PER SPEC 13045.1.
- BRANCH CIRCUIT CONNECTION AND OR HOME RUN SHOWN WITHOUT TICK MARK REPRESENT MINIMUM (1) HOT, (1) NEUTRAL, (1) GROUND IN CONDUIT.

ELECTRICAL SHEET INDEX - PTSD

Sheet Number	Sheet Name	Scale
334 E001	GENERAL NOTES, ABBREVIATIONS, SYMBOLS, AND SHEET INDEX - PTSD	NTS
334 E0201	ELECTRICAL DEMOLITION PLAN - PTSD	1/8" = 1' - 0"
334 E0201	LIGHTING PLAN - PTSD	1/8" = 1' - 0"
334 E0202	POWER PLAN - PTSD	1/8" = 1' - 0"
334 E0301	SINGLE LINE DIAGRAM - PTSD AND PANEL SCHEDULES	NTS
334 E0302	PANEL SCHEDULES - PTSD	NTS
334 E401	ELECTRICAL DETAILS - PTSD	NTS

SYMBOLS	CONDUIT SYMBOLS	NOTES
	CONDUIT INSTALLED CONCEALED ABOVE CEILINGS OR IN WALLS IN FINISHED AREAS OR EXPOSED IN UNFINISHED AREAS	
	CONDUIT INSTALLED BELOW FINISHED FLOOR OR BELOW GRADE	
	INDICATES CONDUIT TURNING UP	
	INDICATES CONDUIT TURNING DOWN	
	CONDUIT STUBBED OUT WITH BUSHING	
	CONDUIT STUBBED OUT AND CAPPED	
	FLEXIBLE CONDUIT WITH SINGLE POINT OF CONNECTION AT ELECTRICAL EQUIPMENT	
	LOW VOLTAGE WIRING	
	GROUNDING CONDUCTOR	
	CONDUIT HOMERUN; ROUTE TO PANELBOARD, CABINET, OR TERMINAL BOARD INDICATED, AND TERMINATE CONDUCTORS TO CIRCUIT OVER CURRENT PROTECTIVE DEVICE	
	NEUTRAL CONDUCTOR - NUMBER AS SHOWN ON PLANS HOT CONDUCTOR - NUMBER AS SHOWN ON PLANS PROVIDE CODE REQUIRED GROUNDING CONDUCTOR.	

65% CD SUBMISSION	03/16/15
100% CD/BID SUBMISSION	02/02/16
Revisions:	Date

CONSULTANTS:



220 Montgomery Street, Suite 650
San Francisco, CA 94104
TEL: 415.632.3266
www.mazzetti.com

PROJECT NUMBER: 130-085

ARCHITECT



POLYTECH ASSOCIATES INC.
235 Pine Street, 17th Floor
San Francisco, CA 94104
TEL (415) 397-3117
FAX (415) 397-1517

Drawing Title

GENERAL NOTES, ABBREVIATIONS, SYMBOLS, AND SHEET INDEX - PTSD

Approved: Project Director

Project Title

POST TRAUMATIC STRESS DIAGNOSIS (PTSD)
EXPANSION AND RENOVATION

Location

795 WILLOW ROAD, MENLO PARK, CA

Date
06/04/15

Checked
AS

Drawn
AP

Project Number

612-125

Building Number

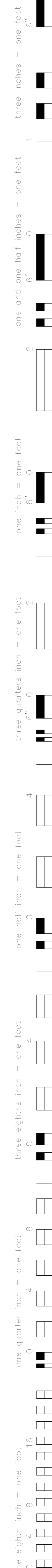
Building 334

Drawing Number

334 E001

Office of
Construction
and Facilities
Management





A. REFER TO THE ARCHITECTURAL DRAWINGS REFLECTED CEILING PLAN FOR EXACT LUMINAIRE LOCATIONS.

B. ALL CONTROL SWITCHES AND SWITCHING ARE LOW VOLTAGE WIRING. REFER TO SHEET ES14 FOR LIGHTING CONTROL SWITCHING DIAGRAMS.

C. REFER TO LIGHTING CONTROL RELAY PANEL SCHEDULE FOR ADDITIONAL INFORMATION ON LOW VOLTAGE CONTROL SWITCHING AND LIGHTING RELAY INTERFACE. SEE SHEET 334 ES11.

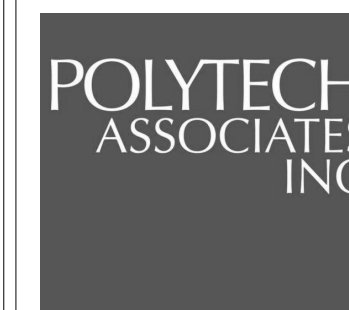
D. FOR DEDUCTIVE ACT. #1 REFER TO SHEET 334AS10A. CIRCUITING AND CONTROLS FOR BASE BID FUTURE TYPE SHALL BE UTILIZE FOR DEDUCT ACT. #1 FUTURE TYPE N1. FUTURE TYPE N1 SHALL BE VODE107-RR-41-36C4 12"-1P-2-50-35 CLEAR LENS 6063 EXTRUDED ALUMINUM HOUSING.

- 1 ROUTE HOMERUN VIA LIGHTING CONTROL RELAY PANEL 'LCP'
- 2 LUMINAIRE LOW VOLTAGE CONTROL SWITCH
- 3 FURNISH WITH ROCKER SWITCH.

[illegible]


MAZZETTI
220 Montgomery Street, Suite 650
San Francisco, CA 94104
TEL: 415.632.3266
www.mazzetti.com

PROJECT NUMBER: 130-085



Department of
Veterans Affairs



Department of
Veterans Affairs

334 EP202

A

B

C

D

E

F

A

B

C

D

E

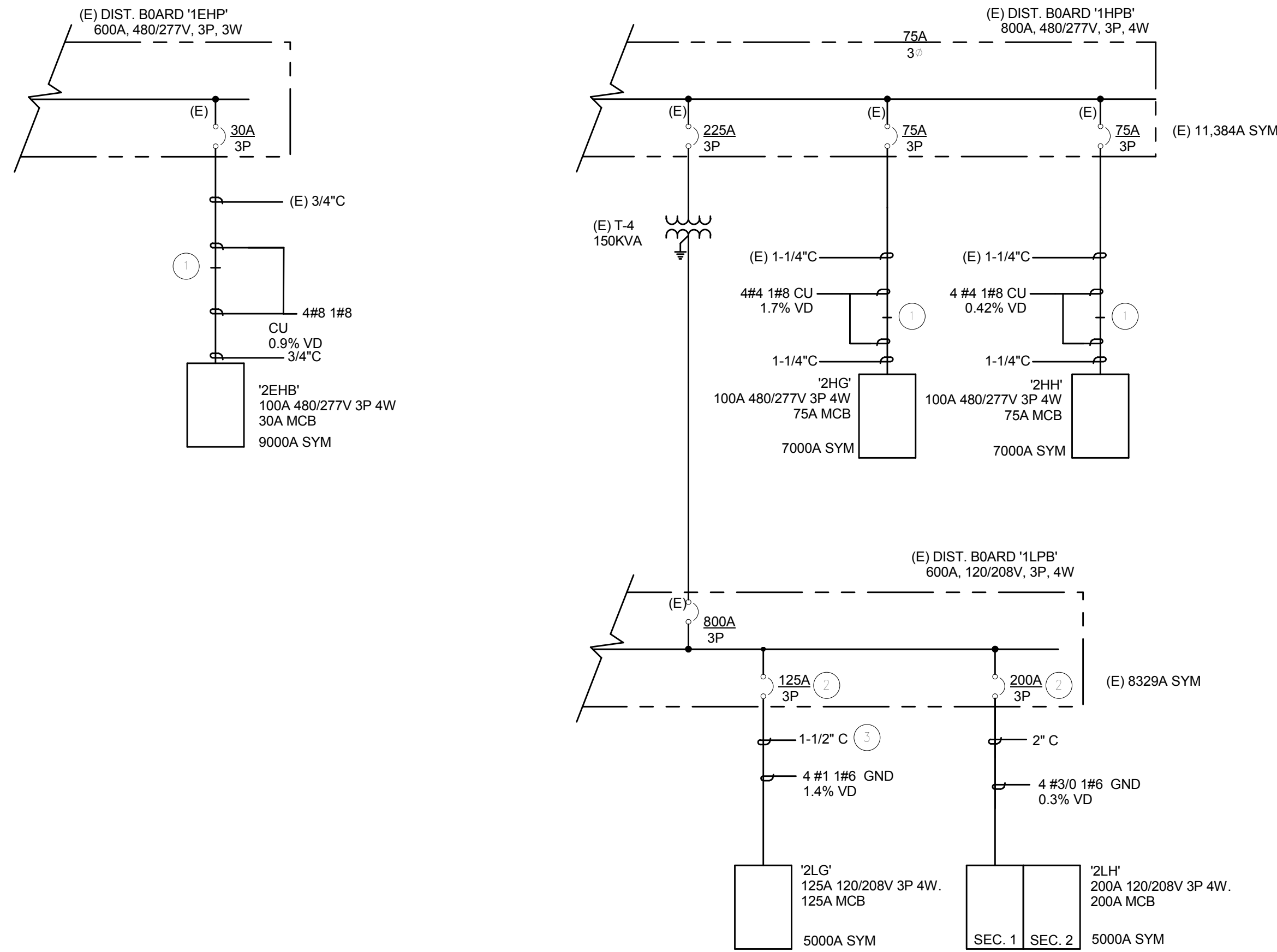
F

LIGHTING RELAY PANEL SCHEDULE				
PANEL DESIGNATION: LCP1 LOCATION: TRANSF VOLTAGE: 120/277V-24V				
RELAY #	PANEL & CIRCUIT	DESCRIPTION	SWITCHBANK/SWITCH#	OTHER CONTROLS *
1	2HG-2	WORKSTATIONS B202	LVa	PC TC
2	2HG-2	WORKSTATIONS B202	LVb	TC
3	2HG-2	WORKSTATIONS B202	LVh	PC TC
4	2HG-2	WORKSTATIONS B202	LVm	TC
5	2HG-2	WORKSTATIONS B202	LVh	TC
6	2HG-1	ELECTICAL B213	LVp	TC
7	2HG-1	CORRIDOR B240	LVj	TC
8	2HG-1	CORRIDOR B240	LVm	TC
9	2HG-1	WORKSTATIONS B202	LVc	PC TC
10	2HG-1	WORKSTATIONS B202	LVd	TC
11	2HG-1	WORKSTATIONS B211	LVa	TC
12	2HG-1	WORKSTATIONS B211	LVb	TC
13	2HG-1	WORKSTATIONS B211	LVc	TC
14	2HG-1	COLLABORATION AREA B216	LVa	TC
15	2HG-1	COLLABORATION AREA B216	LVb	TC
16	2HG-1	COLLABORATION AREA B216	LVc	TC
* OTHER CONTROLS TYPICALLY INCLUDE: TIME CLOCK (TC), PHOTOCELL (PC), SWITCH-MASTER (SM), SWITCH-FLICK WARN (SF), SWITCH-CLEANING (SC), SWITCH-SHED (SS), OR PHONE (P)				

LIGHTING RELAY PANEL SCHEDULE				
PANEL DESIGNATION: LCP2 LOCATION: TRANSF VOLTAGE: 120/277V-24V				
RELAY #	PANEL & CIRCUIT	DESCRIPTION	SWITCHBANK/SWITCH#	OTHER CONTROLS *
1	2HH-1	WORKSTATIONS B239	LVa	TC
2	2HH-1	WORKSTATIONS B239	LVb	TC
3	2HH-1	WORKSTATIONS B239	LVc	PC TC
4	2HH-2	WORKSTATIONS B239	LVe	TC
5	2HH-2	WORKSTATIONS B239	LVg	TC
6	2HH-2	WORKSTATIONS B239	LVh	TC
7	2HH-3	DOCUMENT CONTROL B219	LVa	TC
8	2HH-3	DOCUMENT CONTROL B219	LVb	TC
9	2HH-3	DOCUMENT CONTROL B219	LVc	TC
10	2HH-3	DOCUMENT CONTROL B219	LVd	PC TC
11	2HH-4	WORKSTATIONS B221	LVe	TC
12	2HH-4	WORKSTATIONS B221	LVf	TC
13	2HH-4	WORKSTATIONS B221	LVg	TC
14	SPARE	SPARE	SPARE	SPARE
15	SPARE	SPARE	SPARE	SPARE
16	SPARE	SPARE	SPARE	SPARE
* OTHER CONTROLS TYPICALLY INCLUDE: TIME CLOCK (TC), PHOTOCELL (PC), SWITCH-MASTER (SM), SWITCH-FLICK WARN (SF), SWITCH-CLEANING (SC), SWITCH-SHED (SS), OR PHONE (P)				

KEY NOTES :

- INTERCEPT AND EXTEND CONDUIT AND FEEDERS TO NEW PANEL LOCATION. NEW FEEDERS THROUGHOUT.
- PROVIDE NEW CIRCUIT BREAKER.
- ROUTE CONDUIT FROM THE SECOND FLOOR CEILING VIA ELECTRICAL ROOM B226; FEEDER SHALL DROP DOWN TO (E)PANEL 1LPB AT ELECTRICAL ROOM 1B-106L.



1
334 EP301
SCALE: NTS
ELECTRICAL PTSD SINGLE LINE DIAGRAM

65% CD SUBMISSION	03/16/15
100% CD/BID SUBMISSION	02/02/16
Revisions:	Date

CONSULTANTS:

MAZZETTI

220 Montgomery Street, Suite 650
San Francisco, CA 94104
TEL: 415.632.3966
www.mazzetti.com

PROJECT NUMBER: 130-085



ARCHITECT

POLYTECH ASSOCIATES INC.

POLYTECH ASSOCIATES INC.
235 Pine Street, 17th Floor
San Francisco, CA 94104
TEL (415) 397-3117
FAX (415) 397-1517

Drawing Title
SINGLE LINE DIAGRAM - PTSD AND PANEL SCHEDULES

Approved: Project Director

Project Title
POST TRAUMATIC STRESS DIAGNOSIS (PTSD)
EXPANSION AND RENOVATION

Location
795 WILLOW ROAD, MENLO PARK, CA

Date
01/22/15

Checked
AS

Drawn
AP

Project Number
612-125

Building Number
Building 334

Drawing Number
334 EP301

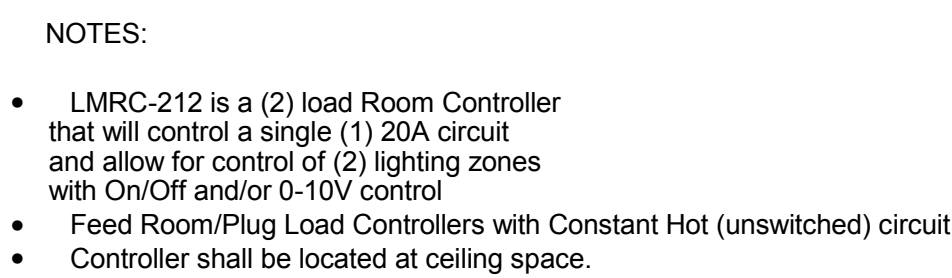
Office of
Construction
and Facilities
Management

Department of
Veterans Affairs

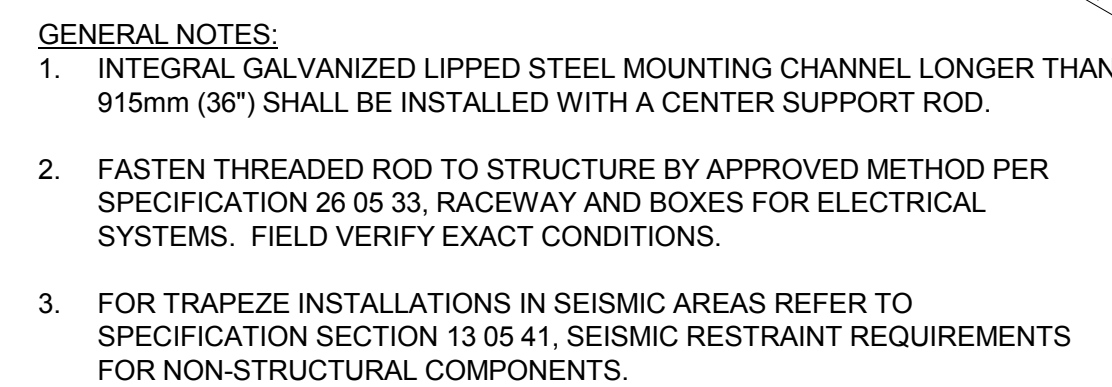
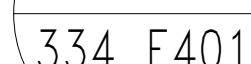
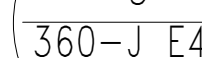
100% CD/BID SUBMISSION
FEBRUARY 2, 2016

PANELBOARD: 2LG														
LOCATION: ELECTRICAL RM B213						VOLTS: 120/208 Wye			A.I.C. RATING: 10,000					
MOUNTING: SURFACE						PHASES: 3			TYPE: NO BOLT ON					
ENCLOSURE: NEMA 1						WIRES: 4			MAIN BUS RATING: 125A					
									MCB RATING: 125A					
									NEUTRAL BUS: SOLID CU					
NOTES: PROVIDE TVSS														
CKT	CIRCUIT DESCRIPTION			TRIP	POL.	A	B	C	POL.	TRIP	CIRCUIT DESCRIPTION			CKT
1	REC. B203			20 A	1	1620...1440...				1	20 A	REC. B202		2
3	REC. B202			20 A	1		1080...1080...			1	20 A	REC. B202		4
5	REC. B202			20 A	1			1080...1260...		1	20 A	REC. B202		6
7	REC. B202			20 A	1	1620...1260...				1	20 A	REC. B202		8
9	REC. B202			20 A	1		1440...1080...			1	20 A	REC. B202, B204		10
11	REC. B202			20 A	1			1080...1620...		1	20 A	REC. B202		12
13	REC. B202			20 A	1	1080...1260...				1	20 A	REC. B202		14
15	REC. B208			20 A	1		1080...180 VA			1	20 A	REC. B207		16
17	REC. B205			20 A	1			900 VA 1080...		1	20 A	REC. B206		18
19	REC. B211			20 A	1	1080...720 VA				1	20 A	REC. B211		20
21	REC. B209, B210,			20 A	1		1260...1440...			1	20 A	REC. B211		22
23	REC. B211			20 A	1			1620...1800...		1	20 A	REC. B216		24
25	REC. B202			20 A	1	900 VA 770 VA				1	20 A	REC. B216		26
27	REC. EQ209			20 A	1		800 VA 720 VA			1	20 A	REC. B212, B215		28
29	REC. TV			20 A	1			660 VA 1080...		1	20 A	REC. B212, BB217, B218		30
31	Spare			20 A	1	0 VA 1080...	0 VA 400 VA			1	20 A	REC. B214, B217		32
33	Spare			20 A	1			0 VA 540 VA		1	20 A	DRINKING FOUNTAIN		34
35	Spare			0 A	1					1	20 A	RCPT B218, B219,		36
37	BMS			20 A	1	180 VA 1080...				1	20 A	REC. B217, B218		38
39	VAV SWITCHES			20 A	1		1300...540 VA			1	20 A	PROJECTOR SCREEN B218		40
41	REC. CORRIDOR			20 A	1			900 VA 500 VA		1	20 A	PROJECTOR B218		42
43														44
45														46
47														48
49														50
51														52
53														54
55														56
57														58
59														60
61														62
63														64
65														66
67														68
69														70
71														72
73														74
75														76
77														78
79														80
81														82
83														84
TOTAL LOAD:						14090 VA	12400 VA	14120 VA						
TOTAL AMPS:						120 A	103 A	120 A						
LEGEND:														
LOAD CLASSIFICATION						CONNECTED LOAD		DEMAND FACTOR		CALCULATED LOAD		PANEL TOTALS		
Lighting						1300 VA		100.00%		1300 VA				
Power						2430 VA		100.00%		2430 VA		TOTAL CONNECTED LOAD: 40610 VA		
Receptacle						36880 VA		63.56%		23440 VA		TOTAL CALCULATED LOAD: 27170 VA		
												TOTAL CONNECTED AMPS: 113 A		
												TOTAL CALCULATED AMPS: 75 A		

PANELBOARD: 2LH															
LOCATION: ELECTRICAL RM B226						VOLTS: 120/208 Wye			A.I.C. RATING: 10,000						
MOUNTING: SURFACE						PHASES: 3			TYPE: NO BOLT ON						
ENCLOSURE: NEMA 1						WIRES: 4			MAIN BUS RATING: 200A						
									MCB RATING: 200A						
									NEUTRAL BUS: SOLID CU						
NOTES: FEED THRU LUGS; PROVIDE TVSS															
CKT	CIRCUIT DESCRIPTION			TRIP	POL.	A	B	C	POL.	TRIP	CIRCUIT DESCRIPTION			CKT	
1	REC. B235, B236, B237			20 A	1	1440...1260...				1	20 A	REC. B233, B234			2
3	REC. B231, B232			20 A	1		1080...1440...			1	20 A	REC. B238			4
5	REC. B238			20 A	1			1080...1440...		1	20 A	REC. B238			6
7	REC. B238			20 A	1	1080...1440...				1	20 A	REC. B238			8
9	REC. B238			20 A	1		1260...1440...			1	20 A	REC. B238			10
11	REC. B238			20 A	1			1080...1440...		1	20 A	REC. B238			12
13	REC. B239			20 A	1	1620...1080...				1	20 A	REC. B239			14
15	REC. B239			20 A	1		1080...1620...			1	20 A	REC. B239			16
17	REC. B239			20 A	1			1620...1620...		1	20 A	REC. B239			18
19	REC. B239			20 A	1	1620...1080...				1	20 A	REC. B239			20
21	REC. B221			20 A	1		1620...720 VA			1	20 A	REC. B221			22
23	REC. B221			20 A	1			1800...1080...		1	20 A	REC. B221			24
25	REC. B221			20 A	1	1620...1620...				1	20 A	REC. B221			26
27	REC. B231			20 A	1		1440...1620...			1	20 A	REC. B231			28
29	REC. B231			20 A	1			720 VA 360 VA		1	20 A	REC. EQ203, EQ204			30
31	Spare			20 A	1	180 VA 720 VA				1	20 A	REC. B219			32
33	VAV SWITCHES			20 A	1		1200...720 VA			1	20 A	REC. B219			34
35	REC. RACK			20 A	1			1000...360 VA		1	20 A	REC. NCP			36
37	REC. RACK			20 A	1	1000...900 VA				1	20 A	REC. CORRIDOR			38
39	FSD'S RM B213, B226			20 A	1		400 VA 1260...			1	20 A	REC. CORRIDOR			40
41	FCU RM B223			20 A	1			100 VA 180 VA		1	20 A	FACP & (2) FAPS			42
43	Spare			0 A	1	0 VA 0 VA	0 VA 0 VA			1	0 A	Spare			44
45	Spare			0 A	1	0 A	0 VA 0 VA			1	0 A	Spare			46
47	Spare			0 A	1	0 A	0 VA 0 VA	0 VA 0 VA	1	0 A	Spare			48	
49	Spare			0 A	1	0 VA 0 VA				1	0 A	Spare			50
51	Spare			--	--	--	0 VA 0 VA	0 VA 0 VA	--	--	Spare			52	
53	Spare			--	--	--		0 VA 0 VA	--	--	Spare			54	
55	Spare			--	--	0 VA 0 VA			--	--	Spare			56	
57	Spare			--	--	--	0 VA 0 VA		--	--	Spare			58	
59	Spare			--	--	--		0 VA 0 VA	--	--	Spare			60	
61	Spare			--	--	0 VA 0 VA			--	--	Spare			62	
63	Spare			--	--	--	0 VA 0 VA		--	--	Spare			64	
65	Spare			--	--	--		0 VA 0 VA	--	--	Spare			66	
67	Spare			--	--	0 VA 0 VA			--	--	Spare			68	
69	Spare			--	--	--	0 VA 0 VA		--	--	Spare			70	
71	Spare			--	--	--		0 VA 0 VA	--	--	Spare			72	
73	Spare			--	--	0 VA 0 VA			--	--	Spare			74	
75	Spare			--	--	--	0 VA 0 VA		--	--	Spare			76	
77	Spare			--	--	--		0 VA 0 VA	--	--	Spare			78	
79	Spare			--	--	0 VA 0 VA			--	--	Spare			80	
81	Spare			--	--	--	0 VA 0 VA	0 VA 0 VA	--	--	Spare			82	
83	Spare			--	--	--			--	--	Spare			84	
				TOTAL LOAD:		16660 VA		16900 VA				13880 VA			
				TOTAL AMPS:		142 A		144 A				116 A			
LEGEND:															
LOAD CLASSIFICATION				CONNECTED LOAD		DEMAND FACTOR		CALCULATED LOAD		PANEL TOTALS					
Lighting				1700 VA		100.00%		1700 VA							
Power				720 VA		100.00%		720 VA		TOTAL CONNECTED LOAD: 47440 VA					
Receptacle				45020 VA		61.11%		27510 VA		TOTAL CALCULATED LOAD: 29930 VA					
										TOTAL CONNECTED AMPS: 132 A					
										TOTAL CALCULATED AMPS: 83 A					



334 E401



334 E401



- 3
334 E401

NTS



- 1
334 E401

NTS



334 E401



- 2
334 E401

NT

220 Montgomery Street, Suite 650
San Francisco, CA 94104
TEL: 415.632.3266
www.mazzetti.com

PROJECT NUMBER: 130-085



Department of
Veterans Affairs

100% CD/BID SUBMISSION
FEBRUARY 2, 2016