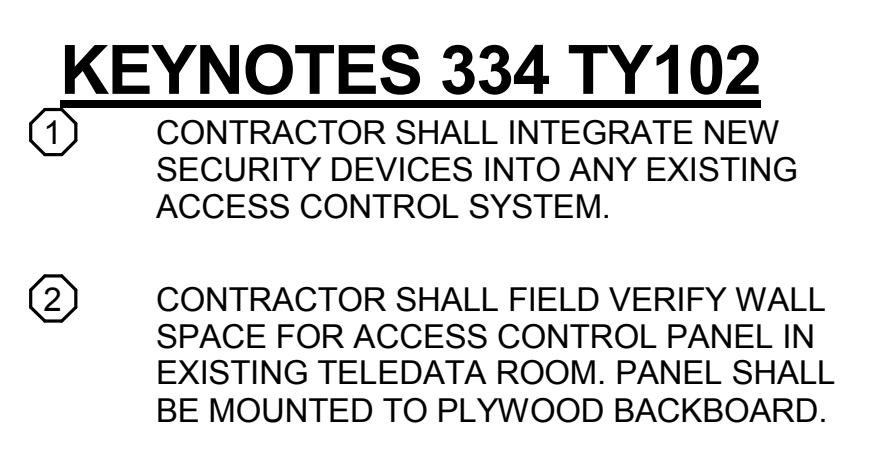


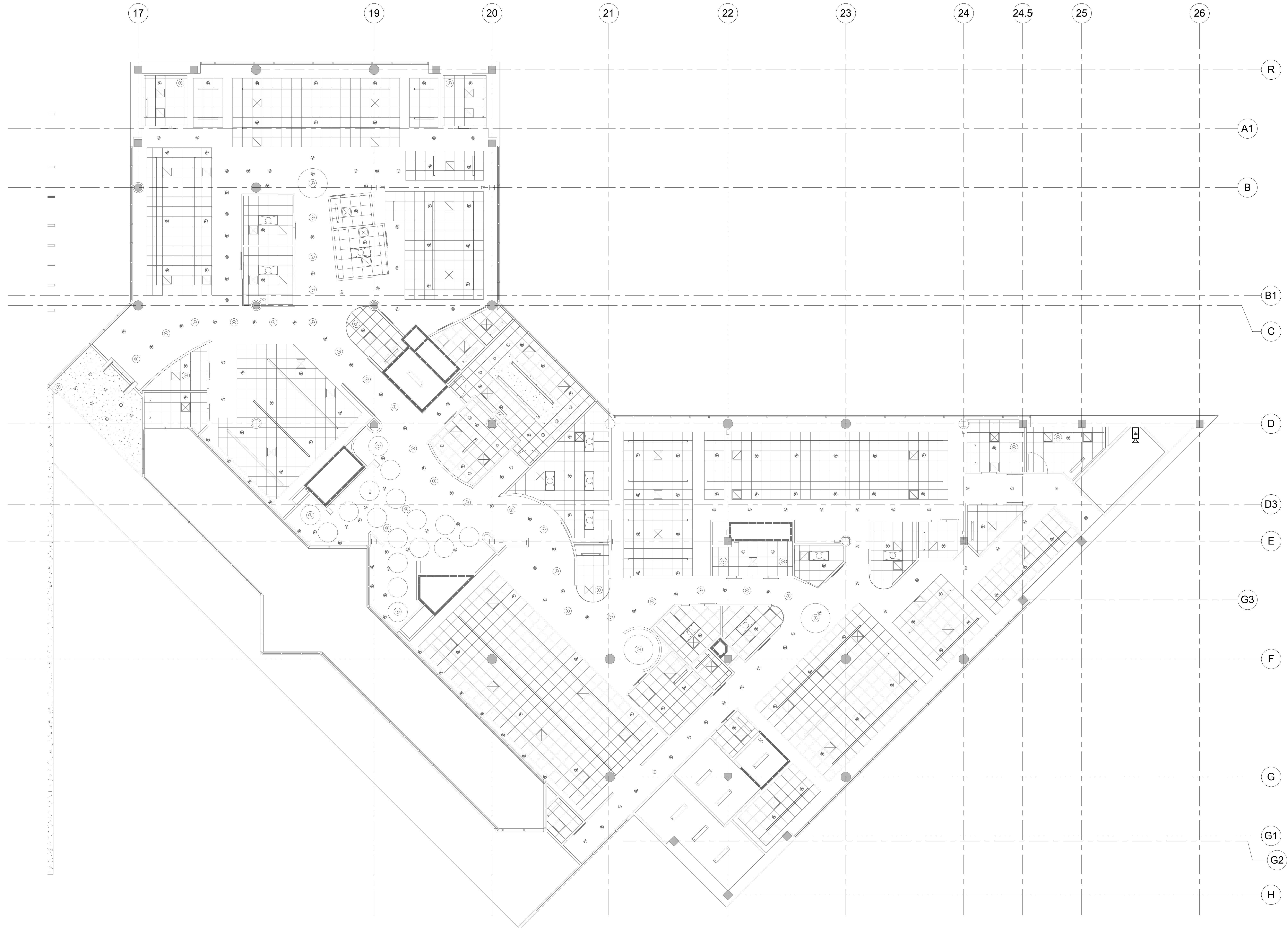
A



100% CD / BID SUBMISSION
FEBRUARY 2, 2016

Office of
Construction
and Facilities
Management

 Department of
Veterans Affairs



100% CD / BID SUBMISSION
FEBRUARY 2, 2016

CONSULTANTS:

ARCHITECT



Office of
Construction
and Facilities
Management

CONSULTANTS:

ARCHITECT

POLYTECH ASSOCIATES INC.
235 Pine Street, 17th Floor
San Francisco, CA 94104
TEL (415) 397-3117
FAX (415) 397-1517

Drawing Title
SECURITY - DETAIL SHEET

Approved: Project Director

Project Title
POST TRAUMATIC STRESS DIAGNOSIS (PTSD)
EXPANSION & RENOVATION

Location	795 WILLOW ROAD, MENLO PARK, CA
----------	---------------------------------

Date
07/30/2015

Checked
AW

Project Number
640-Z35003

Building Number
BUILDING 334 & 360

Drawing Number

334 TY401