

one eighth inch = one foot  
one quarter inch = one foot  
three eighths inch = one foot  
one half inch = one foot  
three quarters inch = one foot  
one inch = one foot  
one and one half inches = one foot  
three inches = one foot

C:\Users\jared\Documents\31000\_00000.dwg

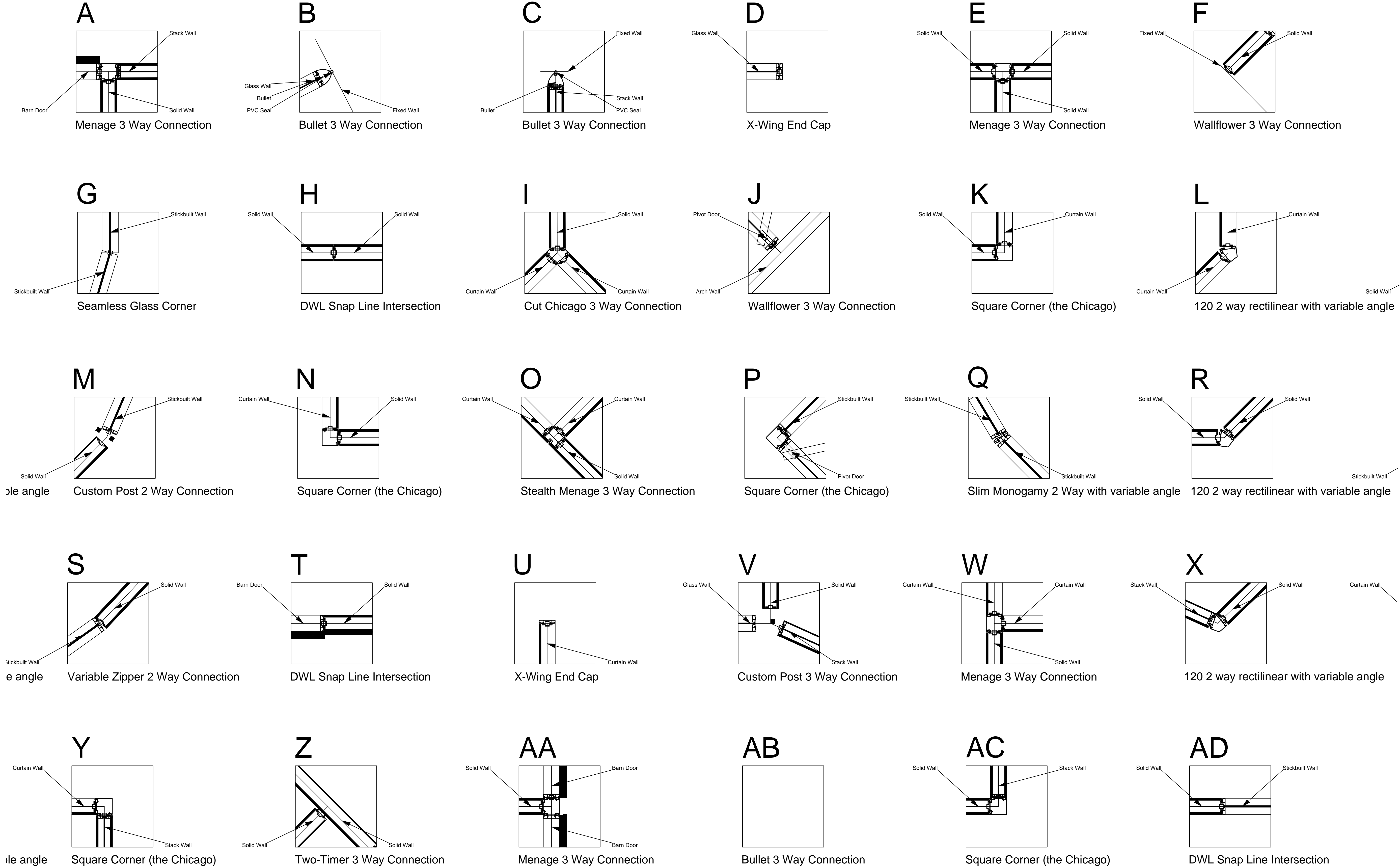
10/20/15 1:12:21 PM

DIRTT Finish Schedule		
Tag	Finish	Specification
M1	ANO	Grade 1 Anodized; Anodized Finish - Clear
M4	PWD	DIRTT Powder Coated Metallic; Powder Coat - Shimmer DPM50
M8	THRM	Thermofoil Grade 1; DIRTT Thermofoil Ash White
M9	THRM	LPL White Side B
M10	MEL	Finished Back Panel - Double Sided LPL Substrate (Pre-Finished); LPL White
M11	PWD	Default Powder Coat; Custom Powder Coat
M12	PNT	Grade 1 - Standard; Chroma Coat - Riff DC51
M13	GLS	Grade 1 (Non-metallic) Backpaint; Clear Glass: Riff; Flat Polish all edges;6.0mm
M14	TFAB	Xorel Dash; DIRTT Fabric Xorel - Bio Dash 36
M15	VEN	Veneer - Grade 2; Veneer - Teck Cherry Quarter Cut ST 10000; Quarter Cut
M16	GLS	Center Mounted Tempered Glass Tile; 6mm Tempered Glass - Clear; No Edge Polish;6.0mm
M17	WGLS_Graphic	Willow Graphic - Gem Stoned Blue DWP112
M18	THRM	Thermofoil Grade 1; DIRTT Thermofoil Snow White

FINISH SCHEDULE

DIRTT Door Schedule									
Tag	Size	Handedness	Locking	Closer Type	Stopper	Finish Tag	Hardware	Hardware Center Location AFF	
BD1	Height 109 7/8" X Width 40 1/4"	LH	No	Piston		M15, M16, M11,	30" x 24" C to C Bar Pull 630 Finish(), Barivot Barn Door Slim Track	30" x 24" C to C Bar Pull 630 Finish(53 13/16"),	
BD2	Height 109 7/8" X Width 40 1/4"	RH	No	Piston		M15, M16, M11,	30" x 24" C to C Bar Pull 630 Finish(), Barivot Barn Door Slim Track	30" x 24" C to C Bar Pull 630 Finish(53 13/16"),	
BD3	Height 109 7/8" X Width 40 1/4"	RH	No	Piston		M15, M16, M11,	30" x 24" C to C Bar Pull 630 Finish(), Barivot Barn Door Slim Track	30" x 24" C to C Bar Pull 630 Finish(53 13/16"),	
BD4	Height 109 7/8" X Width 40 1/4"	LH	No	Piston		M15, M11, M16,	30" x 24" C to C Bar Pull 630 Finish(), Double Barn Door V4 Track	30" x 24" C to C Bar Pull 630 Finish(53 13/16"),	
BD5	Height 109 7/8" X Width 40 1/4"	RH	No	Piston		M15, M11, M16,	30" x 24" C to C Bar Pull 630 Finish(), Double Barn Door V4 Track	30" x 24" C to C Bar Pull 630 Finish(53 13/16"),	
BD6	Height 82 1/2" X Width 40 1/4"	RH	No	Piston		M15, M16, M11,	30" x 24" C to C Bar Pull 630 Finish(), Barivot Barn Door Slim Track	30" x 24" C to C Bar Pull 630 Finish(53 13/16"),	
PD1	Height 109 5/16" X Width 38"	LH	PassageSet	Regular	Dome (Floor Location) S100-626	M15, M16,	Barivot Goldie Door Passage Set(), Door Lever Schlage Passage Satum()	Door Lever Schlage Passage Satum(38"),	
PD2	Height 109 5/16" X Width 38"	RH	PassageSet	Regular	Dome (Floor Location) S100-626	M15, M16,	Barivot Goldie Door Passage Set(), Door Lever Schlage Passage Satum()	Door Lever Schlage Passage Satum(38"),	
Access 406 5/16" X Width 38"		L.H.	PassageSet	Regular	Dome (Floor Location) S100-626	M15, M16,	Barivot Goldie Door Passage Set(), Door Lever Schlage Passage Satum()	Door Lever Schlage Passage Satum(38"),	
Access 406 5/16" X Width 38"		R.H.	PassageSet	Regular	Dome (Floor Location) S100-626	M15, M16,	Barivot Goldie Door Passage Set(), Door Lever Schlage Passage Satum()	Door Lever Schlage Passage Satum(38"),	

three inches = one foot  
one and one half inches = one foot  
one inch = one foot  
three quarters inch = one foot  
one half inch = one foot  
three eighths inch = one foot  
one quarter inch = one foot  
one eighth inch = one foot  
10/20/15 15:21 PM  
C:\Users\paul\Documents\31000\_00000.dwg



**INTERSECTION DETAILS**  
SCALE- 1"= 1'-0"

**SHEET NOTES**

**KEY NOTES**

SEISMIC REQUIRED

EXTRUSION PROFILE: RECTILINEAR

FRAME FINISH: COM POWDER COAT AND VENEER WRAPPED

BASE TRIM FINISH: SILVER SANTOPRENE

PVC/GLASS WIPE: SILVER

CEILING HEIGHT: 9' 6"

CEILING TYPE: GRID

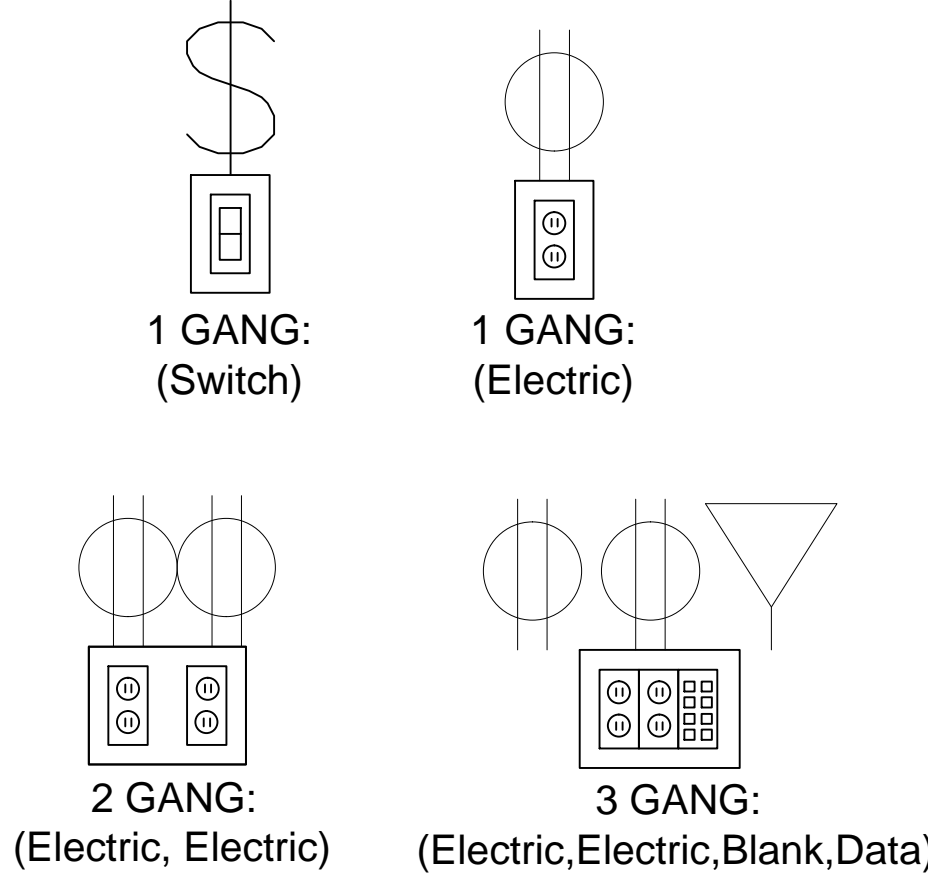
FLOOR TYPE: CARPET

DOORS:  
OFFICES - GOLDIE PIVOT DOORS AND BARN DOORS (4" STILE), WITH VENEER WRAPPED ALUMINUM- 30" C to C BAR PULL WITH 630 FINISH.

CONFERENCE ROOMS - FRAMELESS GLASS PIVOT DOORS NON-LOCKING- 30" C to C BAR PULL WITH 630 FINISH

**LEGEND**

**ELECTRICAL PROVISION REQUIRED:**



**KEY PLAN**

**CLIENT APPROVAL**

- ☐ APPROVED DRAWING PACKAGE  
☐ APPROVED, AS NOTED  
☐ REVISED, RESUBMIT

Authorized Signing Officer \_\_\_\_\_ Date \_\_\_\_\_

This drawing represents DIRTT's interpretation of the design intent and serves as our shop drawings for manufacturing purposes. The details and scope in these drawings represent the product that will be produced by DIRTT Environmental Solutions and delivered to site. All additions, changes or deviations from this approval drawing package will be regarded as a change order and processed accordingly. Approval of this drawing package is one of the conditions precedent to commencement of manufacturing.

DIRTT Environmental Solutions

**DRAWINGS FOR CEILING DEDUCTIVE ALTERNATE #1  
N.I.C. - FOR REFERENCE ONLY**

100% CD / BID SUBMISSION  
JUNE 29, 2015

**CONSULTANTS:**

**ARCHITECT**

**POLYTECH ASSOCIATES INC.**  
POLYTECH ASSOCIATES INC.  
235 Pine Street, 17th Floor  
San Francisco, CA 94104  
TEL (415) 397-3117  
FAX (415) 397-1517

Drawing Title  
DIRTT OVERALL PLAN

Approved: Project Director

Project Title  
POST TRAUMATIC STRESS DIAGNOSIS (PTSD)  
EXPANSION & RENOVATION

Location  
795 WILLOW ROAD, MENLO PARK, CA

Date  
04/21/15

Checked  
Author

Drawn  
Checker

Project Number  
640-235003

Building Number  
BUILDING 334 & 360

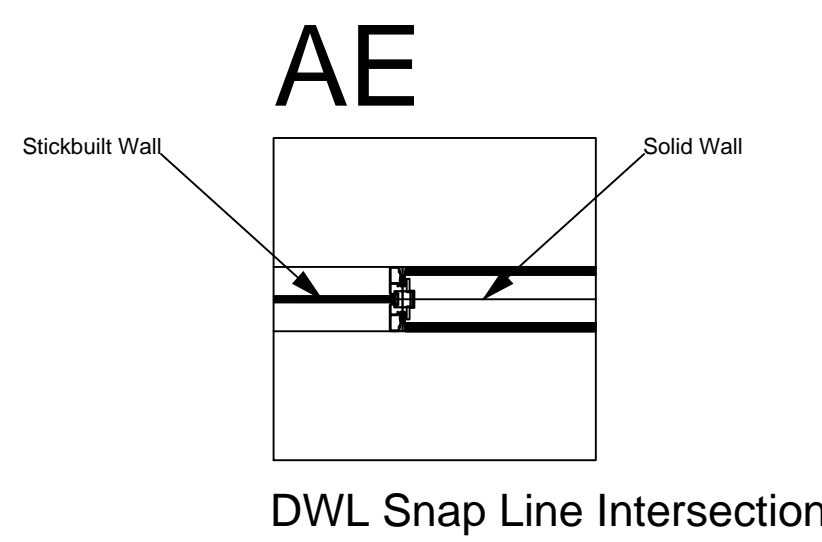
Drawing Number  
334 AI719D

Office of  
Construction  
and Facilities  
Management

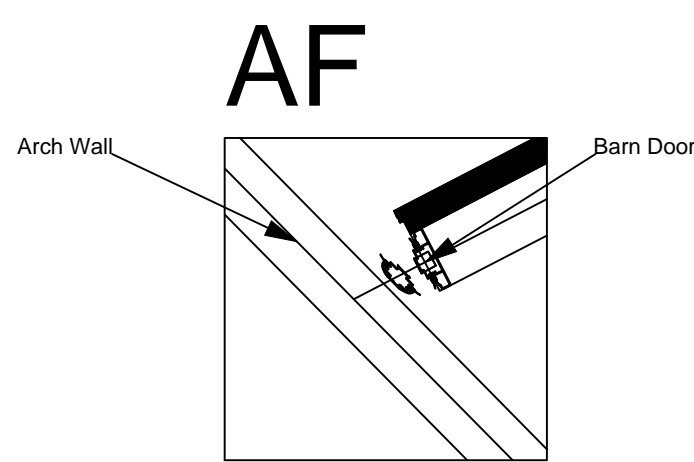
Department of  
Veterans Affairs



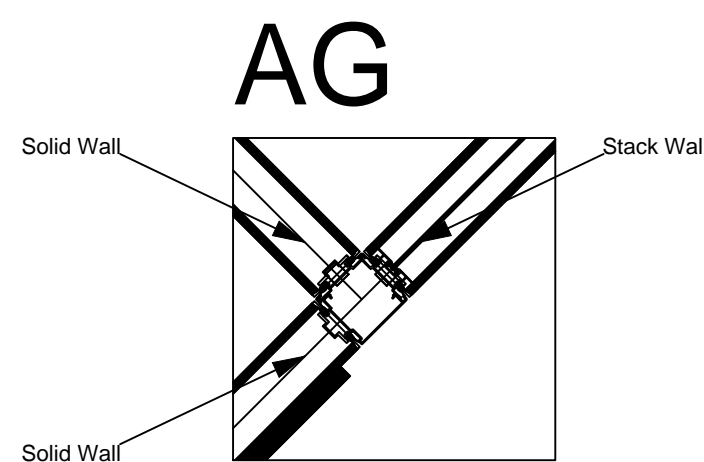
three inches = one foot  
one and one half inches = one foot  
one inch = one foot  
three quarters inch = one foot  
one half inch = one foot  
one quarter inch = one foot  
one eighth inch = one foot  
10/20/15 15:21 PM  
C:\Users\paul\Documents\31000\_00000.dwg



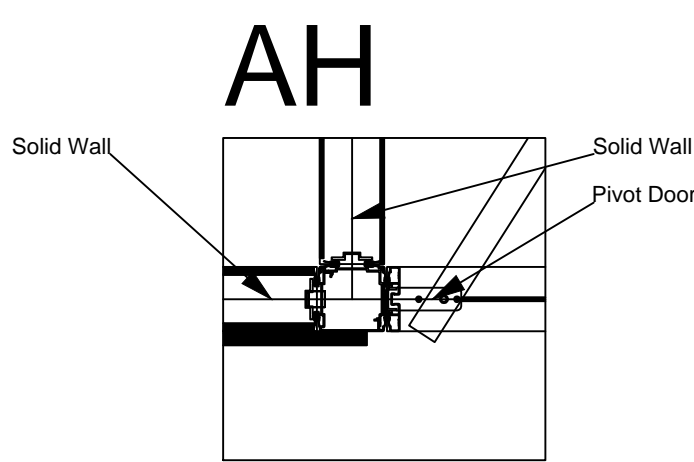
DWL Snap Line Intersection



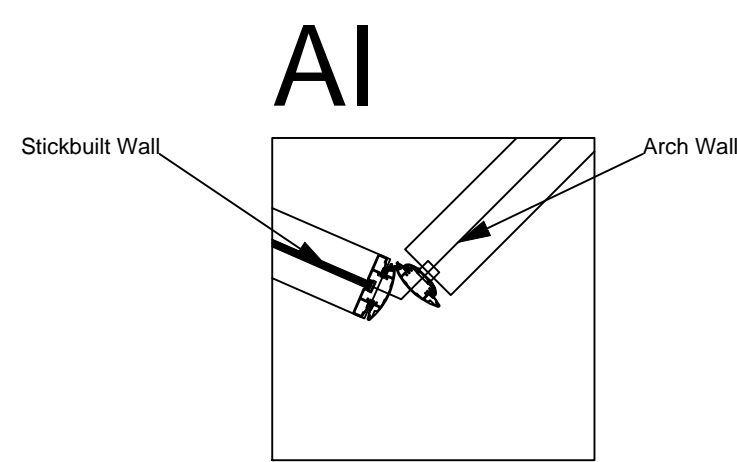
Solid Custom Post 3 Way Connection



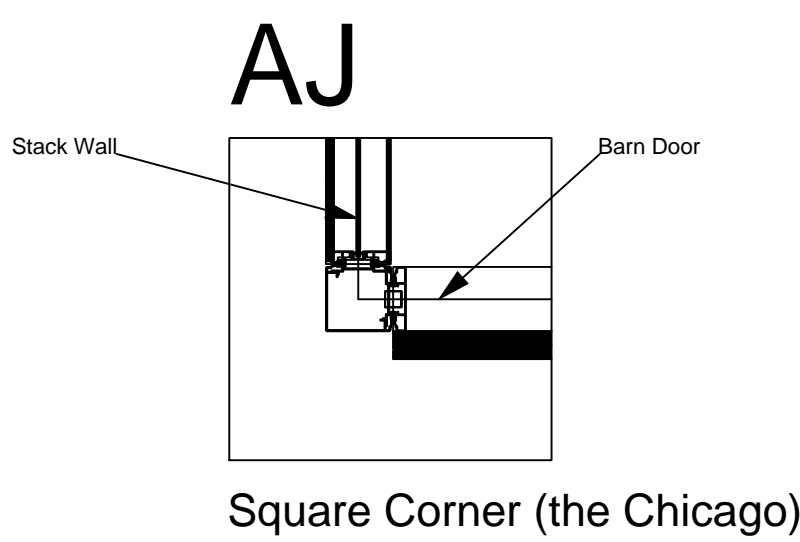
Menage 3 Way Connection



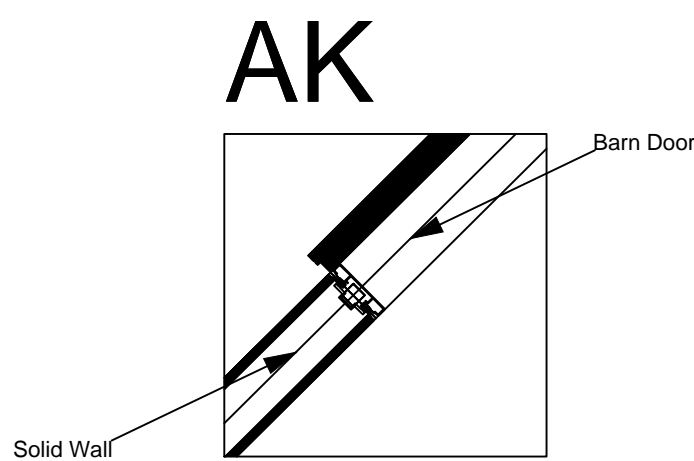
Menage 3 Way Connection



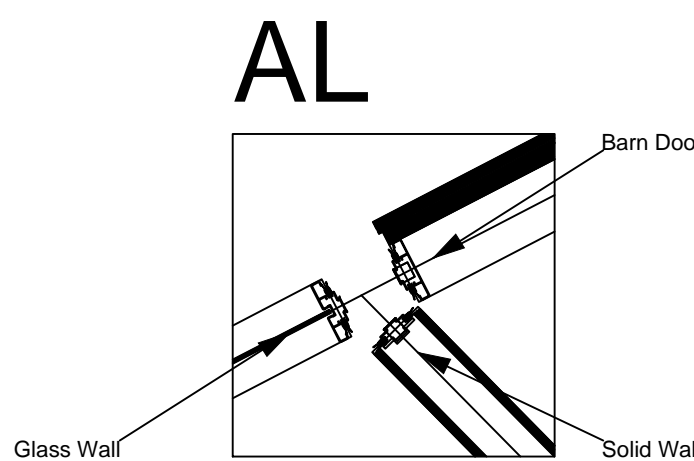
Open Corner (the Quirk)



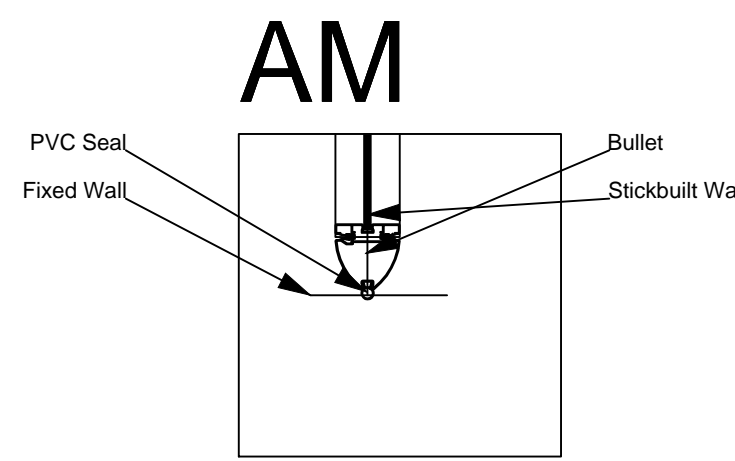
Square Corner (the Chicago)



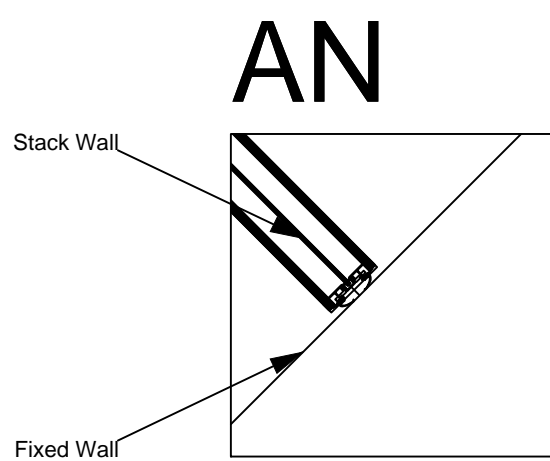
DWL Snap Line Intersection



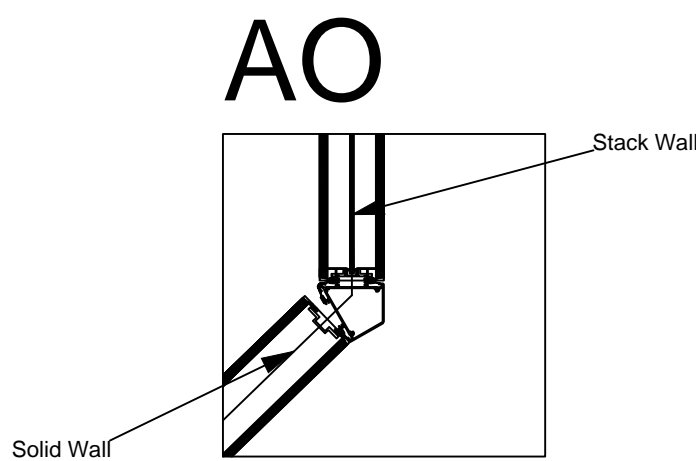
Solid Custom Post 3 Way Connection



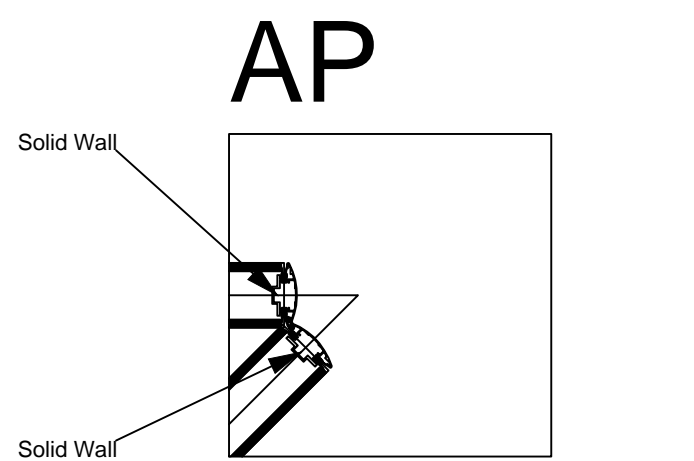
Bullet 3 Way Connection



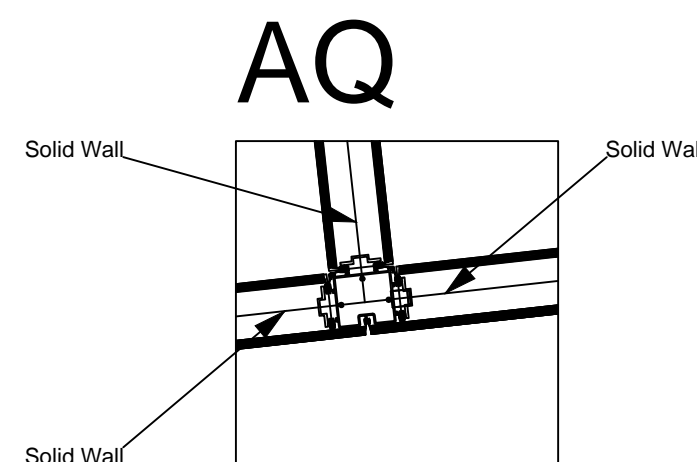
Two-Timer 3 Way Connection



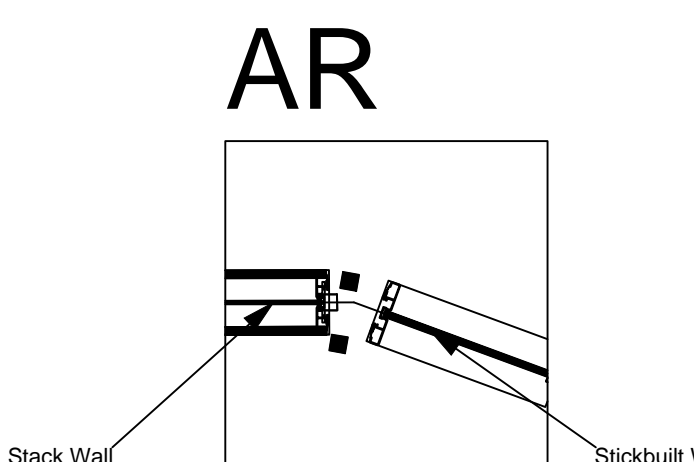
120 2 way rectilinear with variable angle - right



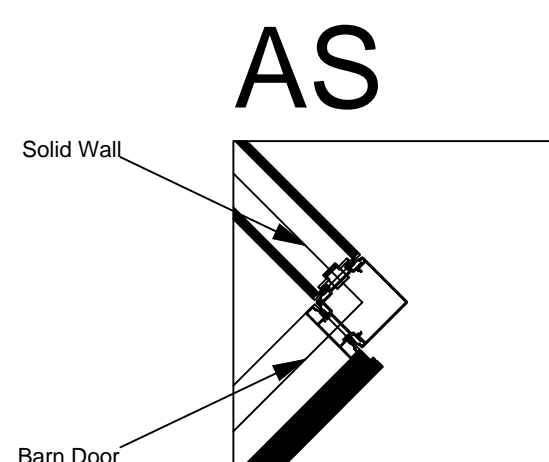
Open Corner (the Quirk)



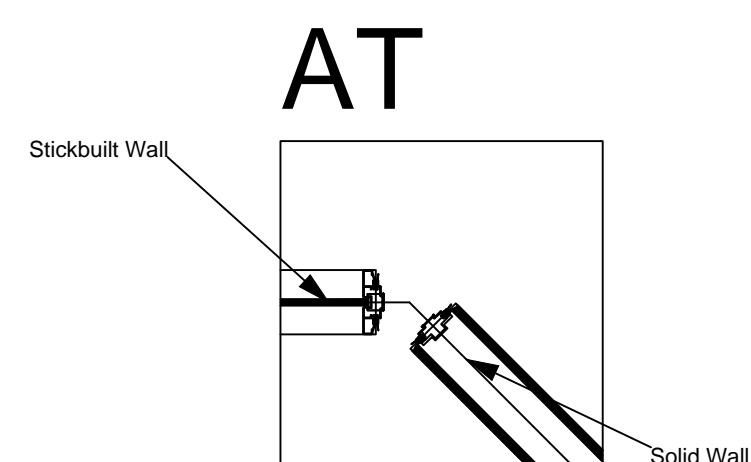
Stealth Menage 3 Way Connection



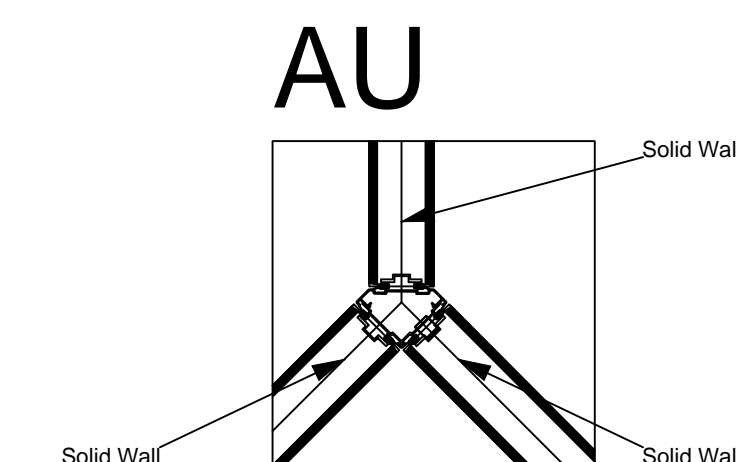
Custom Post 2 Way Connection



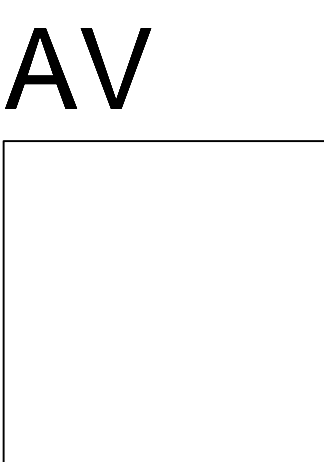
Square Corner (the Chicago)



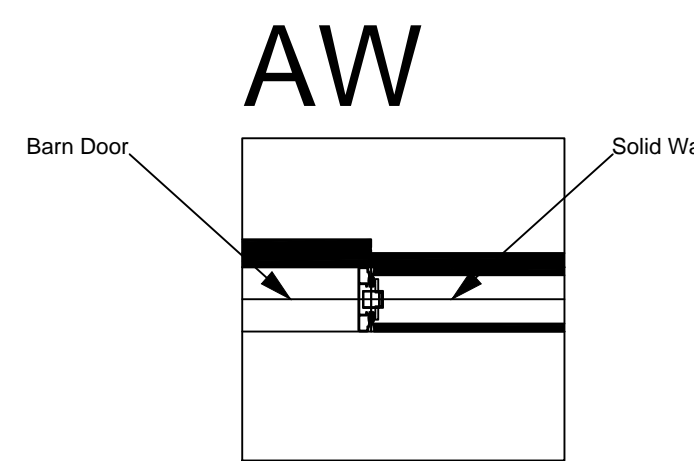
Solid Custom Post 2 Way Connection



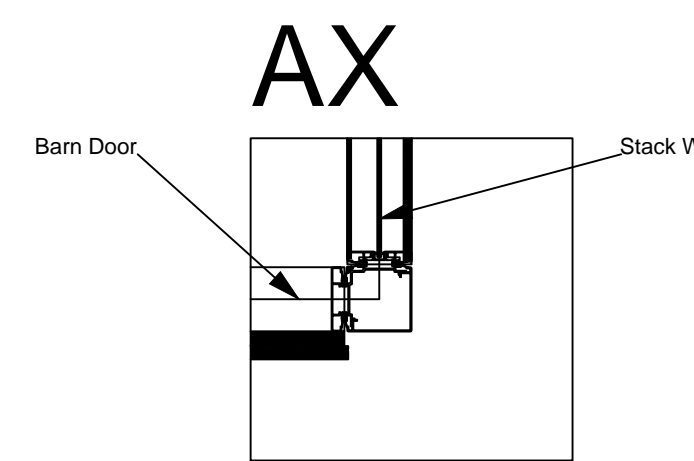
Cut Chicago 3 Way Connection



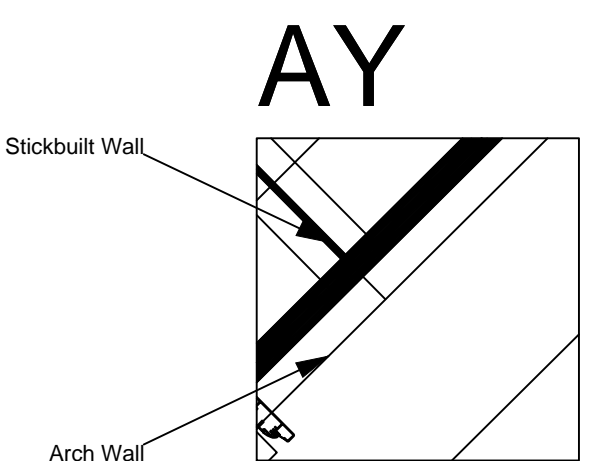
Menage 3 Way Connection



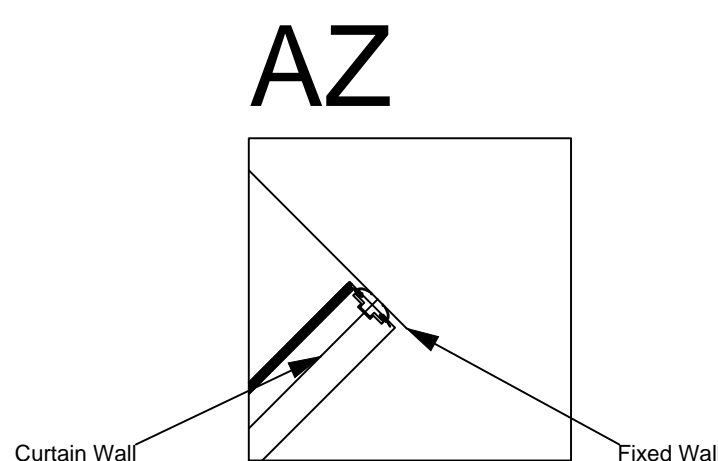
Zipper 2 Way Connection



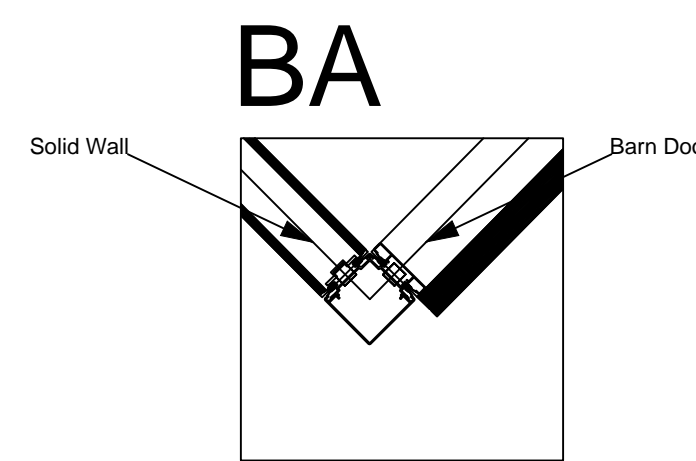
Square Corner (the Chicago)



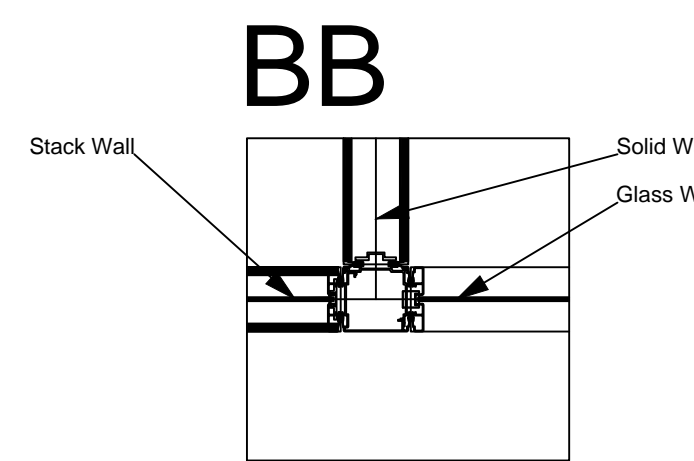
Two-Timer 3 Way Connection



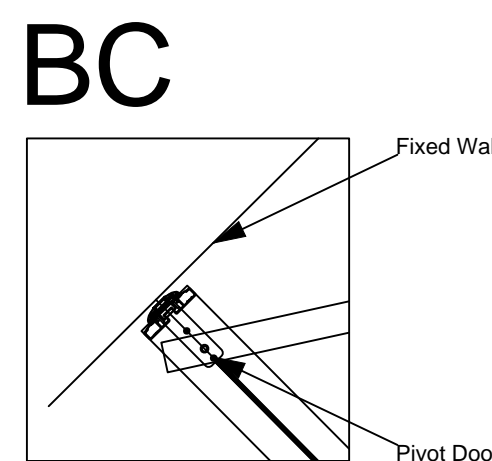
Two-Timer 3 Way Connection



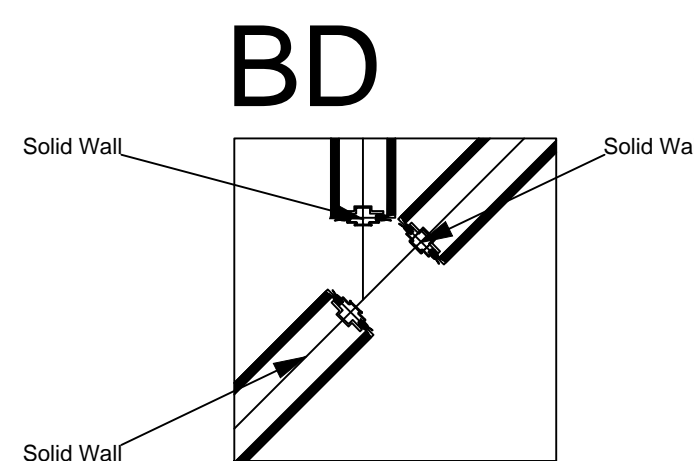
Square Corner (the Chicago)



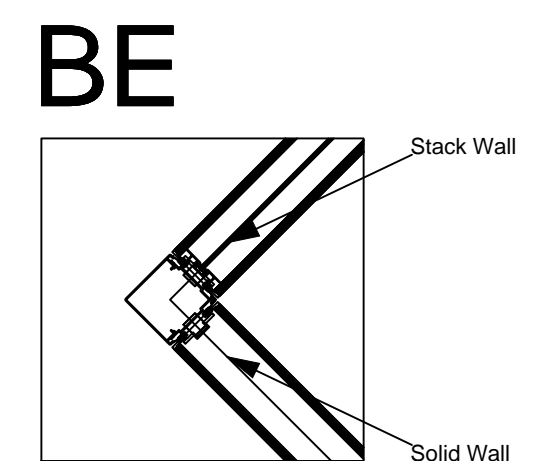
Menage 3 Way Connection



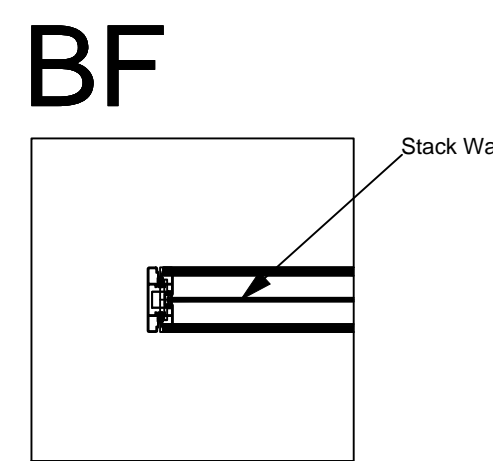
Wallflower 3 Way Connection



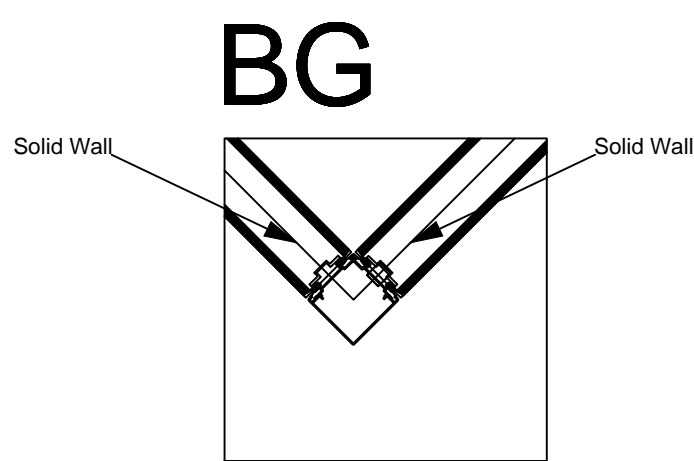
Solid Custom Post 3 Way Connection



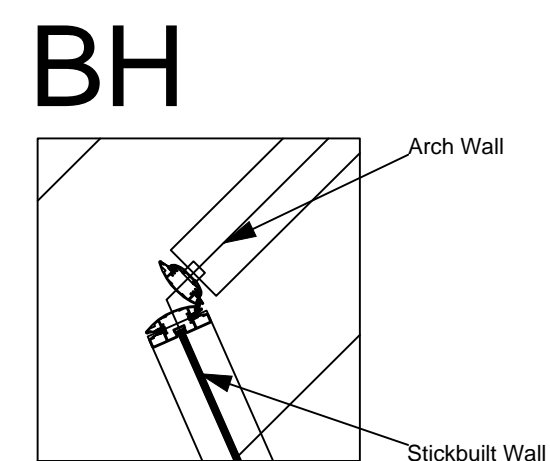
Square Corner (the Chicago)



X-Wing End Cap



Square Corner (the Chicago)



Open Corner (the Quirk)

## INTERSECTION DETAILS

SCALE- 1"= 1'-0"

## SHEET NOTES

### KEY NOTES

SEISMIC REQUIRED

EXTRUSION PROFILE: RECTILINEAR

FRAME FINISH: COM POWDER COAT  
AND VENEER WRAPPED

BASE TRIM FINISH: SILVER SANTOPRENE

PVC/GLASS WIPE: SILVER

CEILING HEIGHT: 9' 6"

CEILING TYPE: GRID

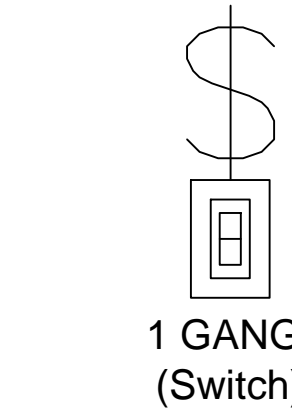
FLOOR TYPE: CARPET

DOORS:  
OFFICES - GOLDIE PIVOT DOORS AND BARN  
DOORS (4" STILE), WITH VENEER WRAPPED  
ALUMINUM- 30" C to C BAR PULL WITH 630  
FINISH.

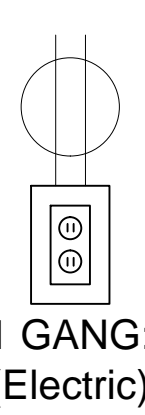
CONFERENCE ROOMS - FRAMELESS GLASS  
PIVOT DOORS NON-LOCKING- 30" C to C BAR  
PULL WITH 630 FINISH

### LEGEND

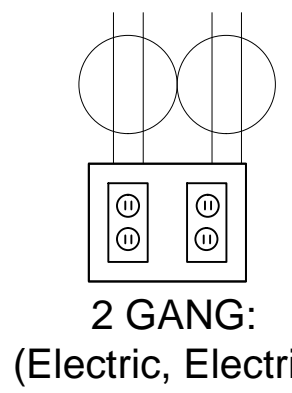
#### ELECTRICAL PROVISION REQUIRED:



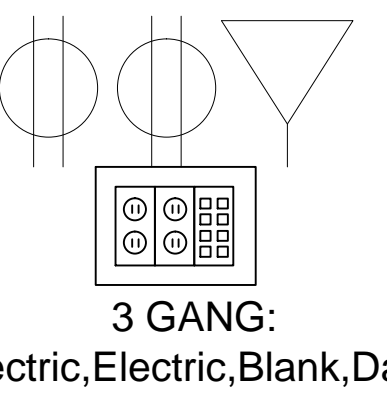
1 GANG:  
(Switch)



1 GANG:  
(Electric)



2 GANG:  
(Electric, Electric)



3 GANG:  
(Electric, Electric, Blank, Data)

### KEY PLAN

#### CLIENT APPROVAL

- ☐ APPROVED DRAWING PACKAGE  
☐ APPROVED, AS NOTED  
☐ REVISED, RESUBMIT

Authorized Signing Officer

Date

This drawing represents DIRT's interpretation of the design intent and serves as our shop drawings for manufacturing purposes. The details and scope in these drawings represent the product that will be produced by DIRT Environmental Solutions and delivered to site. All additions, changes or deviations from this approval drawing package will be regarded as a change order and processed accordingly. Approval of this drawing package is one of the conditions precedent to commencement of manufacturing.

DIRTT Environmental Solutions

## DRAWINGS FOR CEILING DEDUCTIVE ALTERNATE #1 N.I.C. - FOR REFERENCE ONLY

### CONSULTANTS:

### ARCHITECT

POLYTECH ASSOCIATES INC.  
235 Pine Street, 17th Floor  
San Francisco, CA 94104  
TEL (415) 397-3117  
FAX (415) 397-1517

Drawing Title  
DIRTT OVERALL PLAN

Approved: Project Director

Project Title  
POST TRAUMATIC STRESS DIAGNOSIS (PTSD)  
EXPANSION & RENOVATION

Location  
795 WILLOW ROAD, MENLO PARK, CA

Date  
04/21/15

Checked  
Author

Drawn  
Checker

Project Number  
640-235003

Building Number  
BUILDING 334 & 360

Drawing Number  
334 AI720D

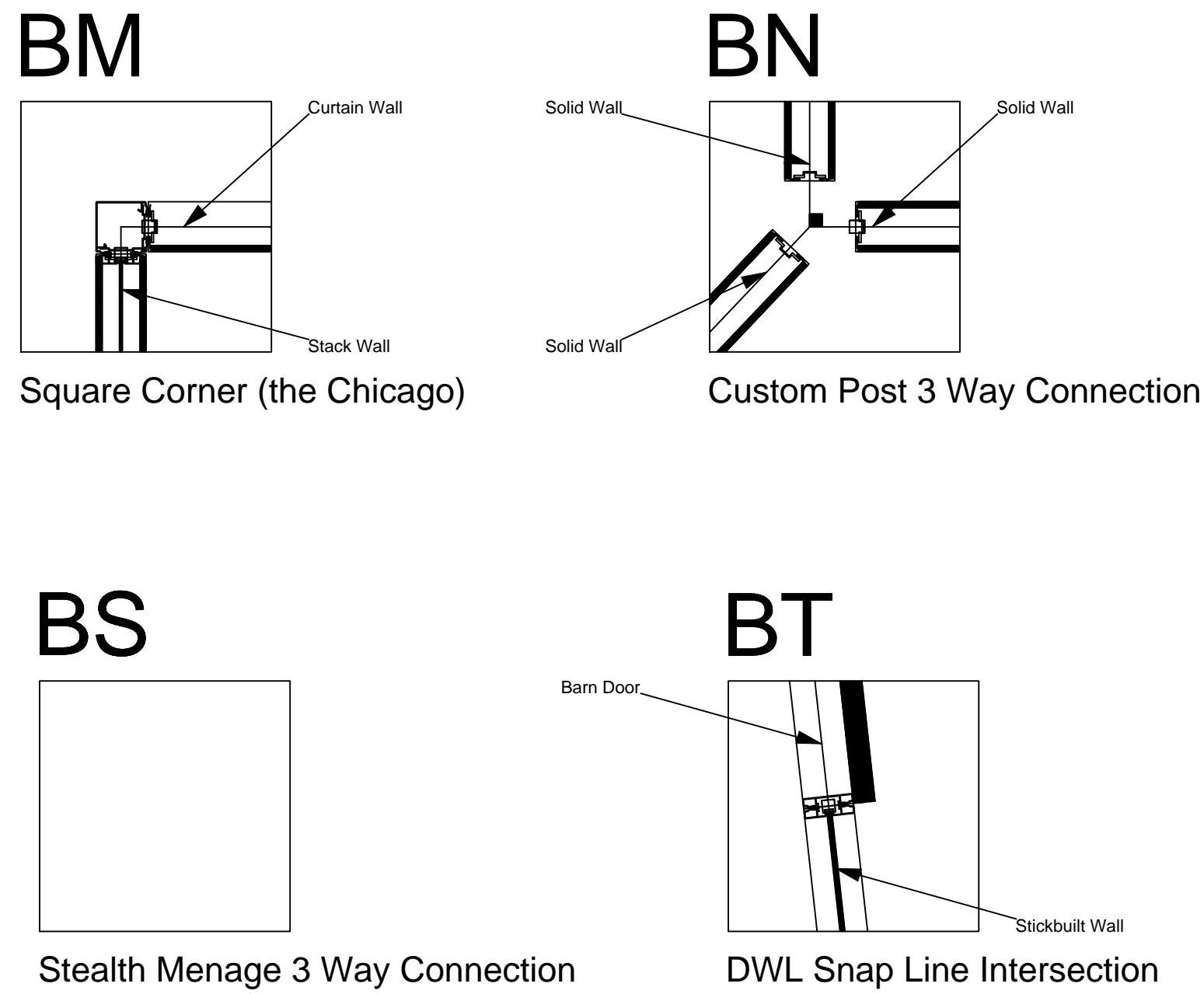
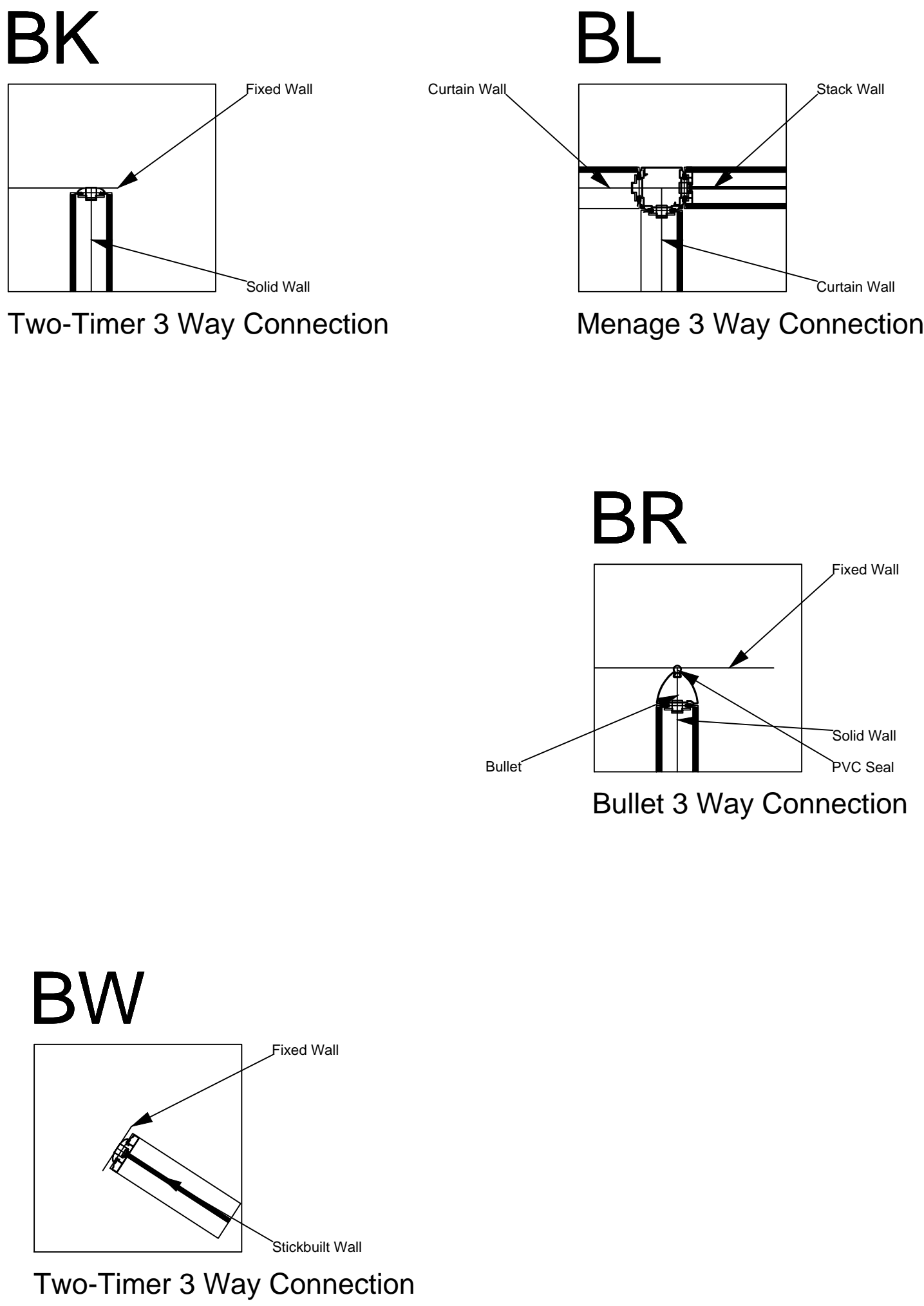
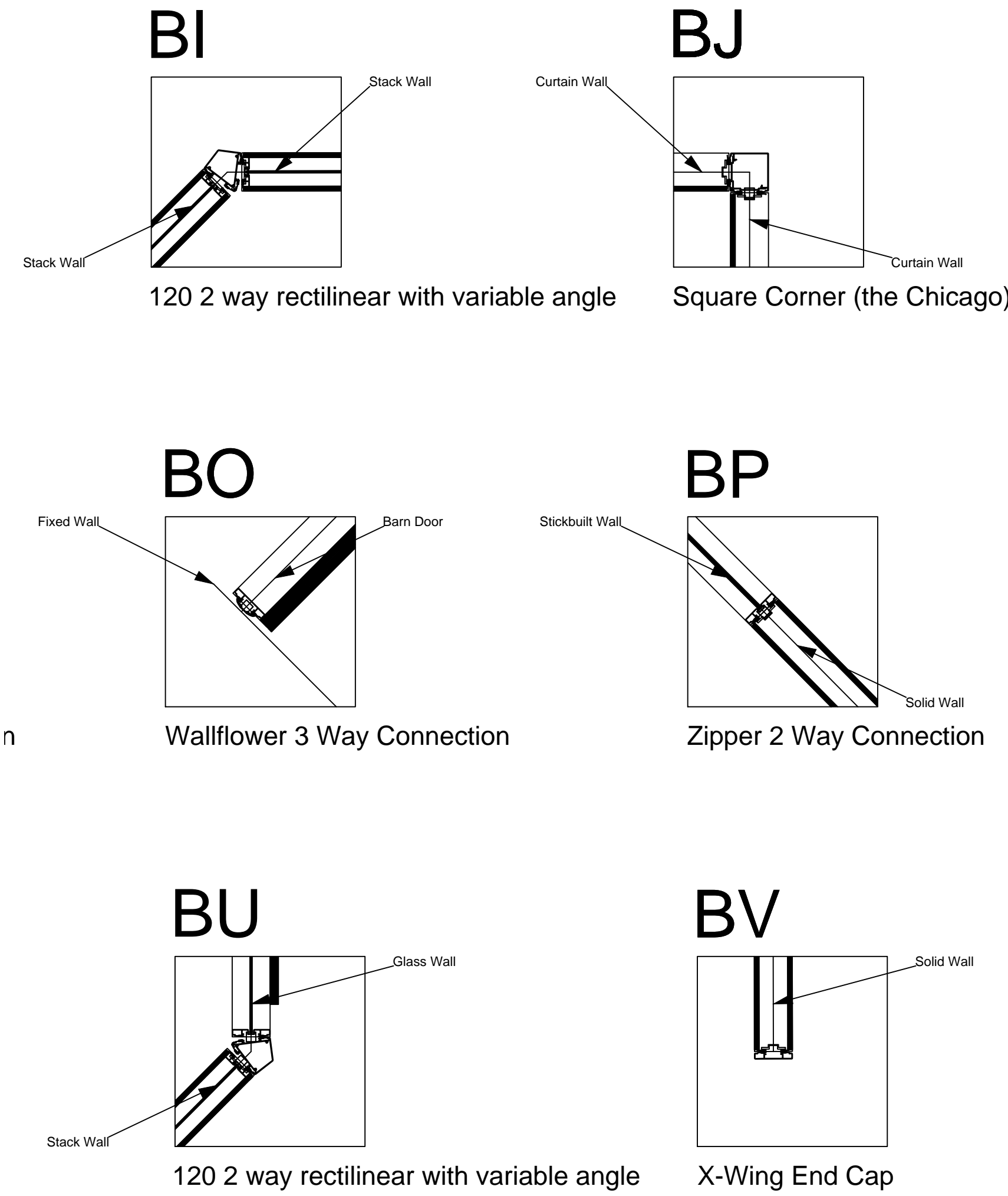
Office of  
Construction  
and Facilities  
Management



100% CD / BID SUBMISSION  
JUNE 29, 2015

one eighth inch = one foot  
one quarter inch = one foot  
three eighths inch = one foot  
one half inch = one foot  
one inch = one foot  
one and one half inches = one foot  
three inches = one foot

C:\Users\paul\Documents\31000\_00000.dwg  
10/20/15 1:12:21 PM



## INTERSECTION DETAILS

SCALE- 1"= 1'-0"

## DRAWINGS FOR CEILING DEDUCTIVE ALTERNATE #1

N.I.C. - FOR REFERENCE ONLY

CLIENT APPROVAL

☐ APPROVED DRAWING PACKAGE

☐ APPROVED, AS NOTED

☐ REVISED, RESUBMIT

Authorized Signing Officer

Date

This drawing represents DIRT's interpretation of the design intent and serves as our shop drawings for manufacturing purposes. The details and scope in these drawings represent the product that will be produced by DIRT Environmental Solutions and delivered to site. All additions, changes or deviations from this approval drawing package will be regarded as a change order and processed accordingly. Approval of this drawing package is one of the conditions precedent to commencement of manufacturing.

DIRTT Environmental Solutions

## SHEET NOTES

## KEY NOTES

SEISMIC REQUIRED

EXTRUSION PROFILE: RECTILINEAR

FRAME FINISH: COM POWDER COAT AND VENEER WRAPPED

BASE TRIM FINISH: SILVER SANTOPRENE

PVC/GLASS WIPE: SILVER

CEILING HEIGHT: 9' 6"

CEILING TYPE: GRID

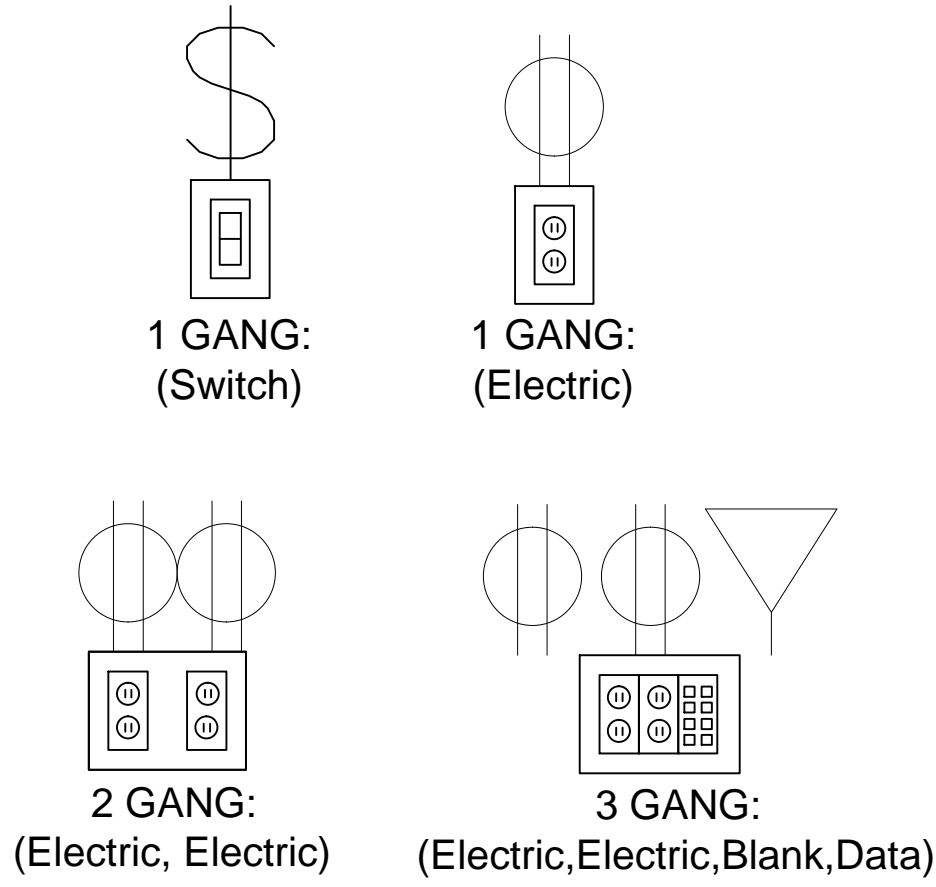
FLOOR TYPE: CARPET

DOORS:  
OFFICES - GOLDIE PIVOT DOORS AND BARN DOORS (4" STILE), WITH VENEER WRAPPED ALUMINUM- 30" C to C BAR PULL WITH 630 FINISH.

CONFERENCE ROOMS - FRAMELESS GLASS PIVOT DOORS NON-LOCKING- 30" C to C BAR PULL WITH 630 FINISH

## LEGEND

### ELECTRICAL PROVISION REQUIRED:



## KEY PLAN

100% CD / BID SUBMISSION  
JUNE 29, 2015

## CONSULTANTS:

## ARCHITECT

POLYTECH ASSOCIATES INC.  
235 Pine Street, 17th Floor  
San Francisco, CA 94104  
TEL (415) 397-3117  
FAX (415) 397-1517

Drawing Title  
DIRTT OVERALL PLAN

Approved: Project Director

Project Title  
POST TRAUMATIC STRESS DIAGNOSIS (PTSD)  
EXPANSION & RENOVATION

Location  
795 WILLOW ROAD, MENLO PARK, CA

Date  
04/21/15

Checked  
Author

Drawn  
Checker

Project Number  
640-235003

Building Number  
BUILDING 334 & 360

Drawing Number

334 AI721D

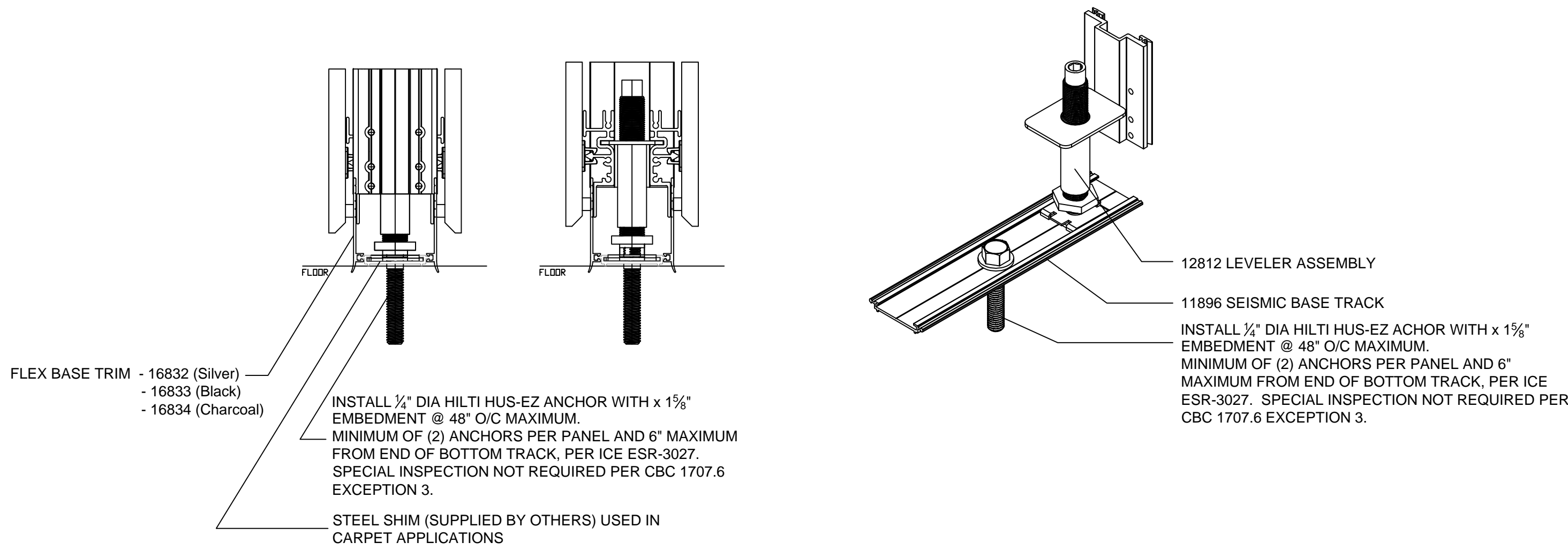
Office of  
Construction  
and Facilities  
Management

Department of  
Veterans Affairs

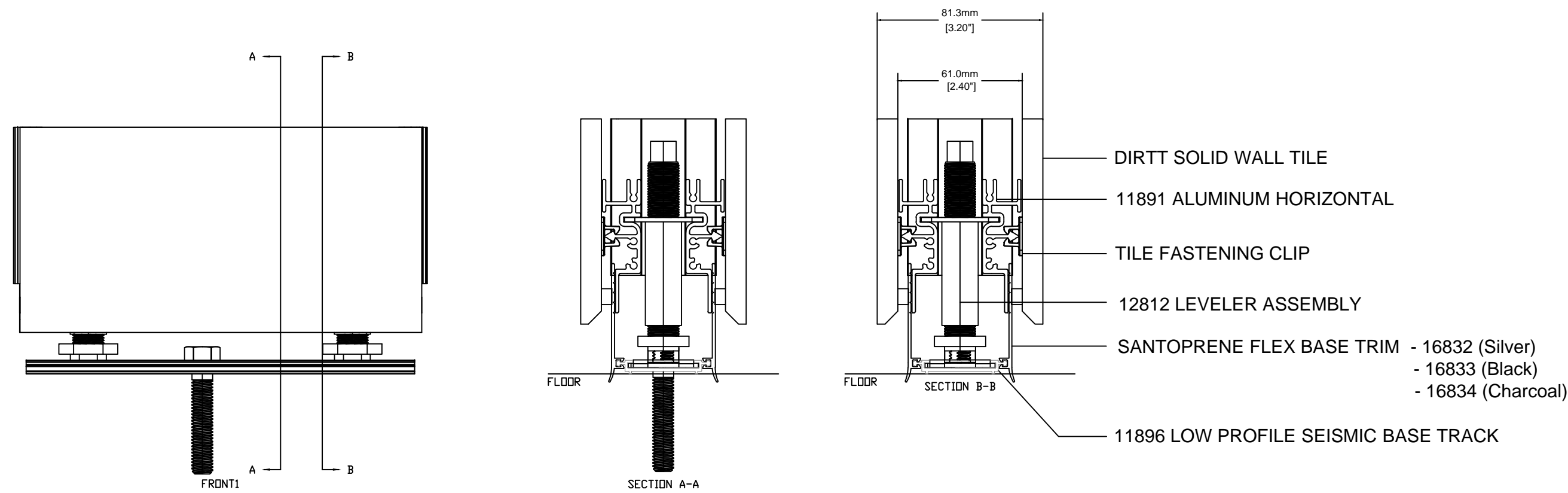


NOTE:  
CAUTION SHOULD BE TAKEN WHEN FASTENING TO POST TENSION  
SLABS OR TO FLOORS CONTAINING RADIANT HEATING. FLOORS MAY  
REQUIRE X-RAY TO ENSURE FASTENERS DO NOT CONFLICT WITH  
CONCEALED STRUCTURAL OR MECHANICAL ELEMENTS. ALL RELATIVE  
COSTS WILL BE PASSED ONTO THE CLIENT (NOT COVERED BY DIRT).

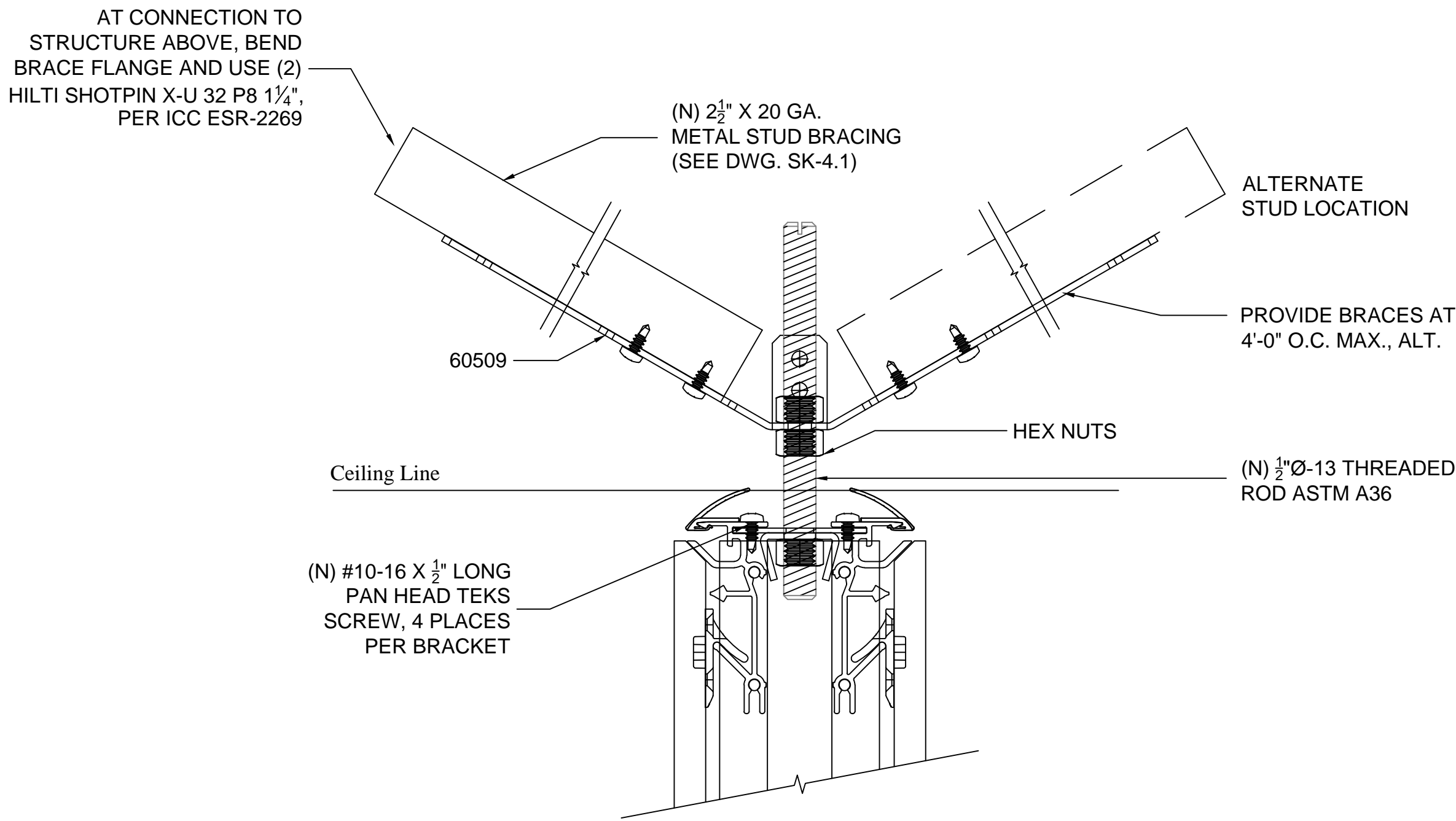
A THOROUGH REVIEW WITH LOCAL AUTHORITIES MAY BE REQUIRED  
TO ESTABLISH AN ACCEPTABLE ALTERNATIVE FASTENING METHOD  
WHICH MEETS BOTH INTERNATIONAL BUILDING CODE AND LOCAL  
REQUIREMENTS BASED ON THE INSTALLATION LOCATION.



SEISMIC DETAIL: SOLID WALL ATTACHMENT AT BASE



SEISMIC DETAIL - SOLID WALL SECTION



GRID CEILING KICKER CONNECTION TO SOLID WALL

SHEET NOTES

KEY NOTES

SEISMIC REQUIRED

EXTRUSION PROFILE: RECTILINEAR

FRAME FINISH: COM POWDER COAT  
AND VENEER WRAPPED

BASE TRIM FINISH: SILVER SANTOPRENE

PVC/GLASS WIPE: SILVER

CEILING HEIGHT: 9' 6"

CEILING TYPE: GRID

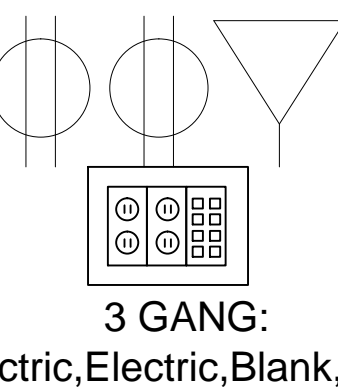
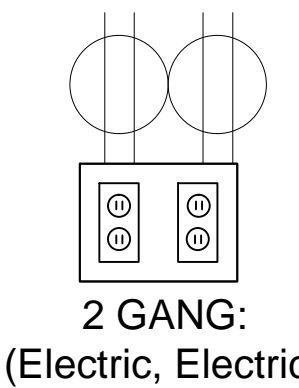
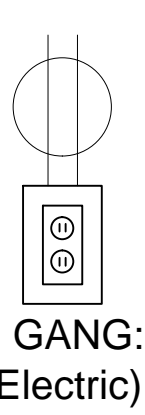
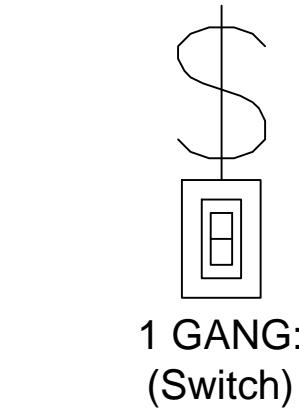
FLOOR TYPE: CARPET

DOORS:  
OFFICES - GOLDIE PIVOT DOORS AND BARN  
DOORS (4" STILE), WITH VENEER WRAPPED  
ALUMINUM- 30" C to C BAR PULL WITH 630  
FINISH.

CONFERENCE ROOMS - FRAMELESS GLASS  
PIVOT DOORS NON-LOCKING- 30" C to C BAR  
PULL WITH 630 FINISH

LEGEND

ELECTRICAL PROVISION  
REQUIRED:



KEY PLAN

DRAWINGS FOR CEILING DEDUCTIVE ALTERNATE #1  
N.I.C. - FOR REFERENCE ONLY

100% CD / BID SUBMISSION  
JUNE 29, 2015

CONSULTANTS:

ARCHITECT

POLYTECH ASSOCIATES INC.  
235 Pine Street, 17th Floor  
San Francisco, CA 94104  
TEL (415) 397-3117  
FAX (415) 397-1517

Drawing Title  
DIRTT OVERALL PLAN

Approved: Project Director

Project Title  
POST TRAUMATIC STRESS DIAGNOSIS (PTSD)  
EXPANSION & RENOVATION

Location  
795 WILLOW ROAD, MENLO PARK, CA

Date  
04/21/15

Checked  
Author

Drawn  
Checker

Project Number  
640-235003

Building Number  
BUILDING 334 & 360

Drawing Number

334 A1722 D

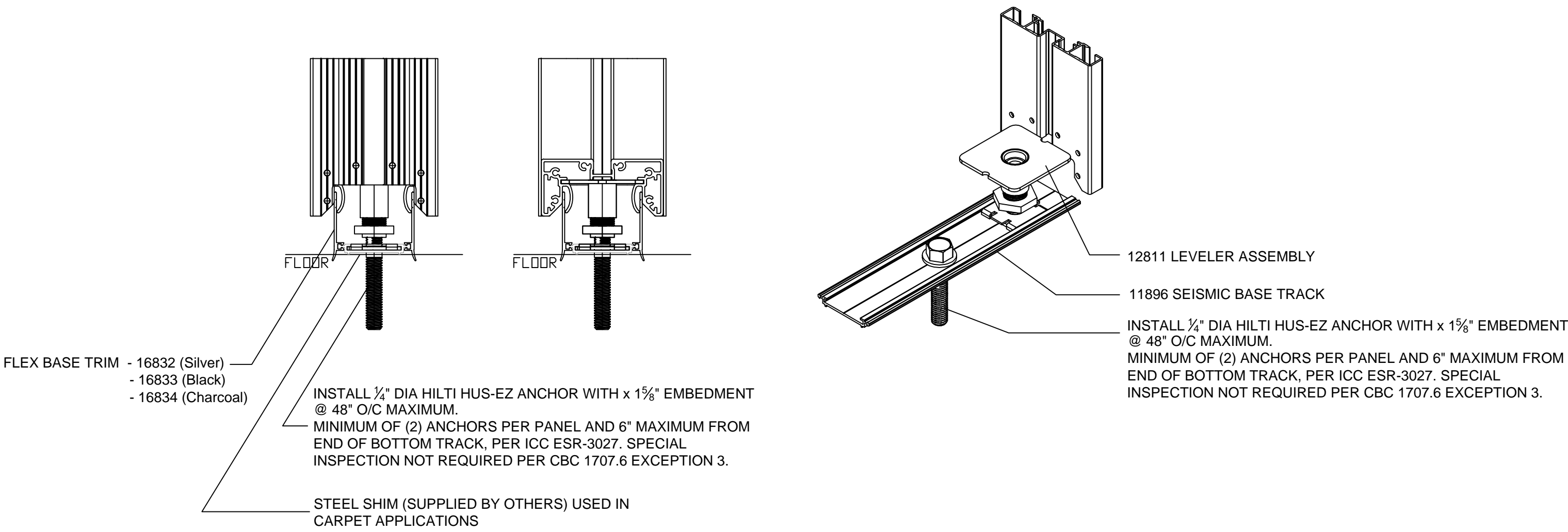
Office of  
Construction  
and Facilities  
Management

Department of  
Veterans Affairs

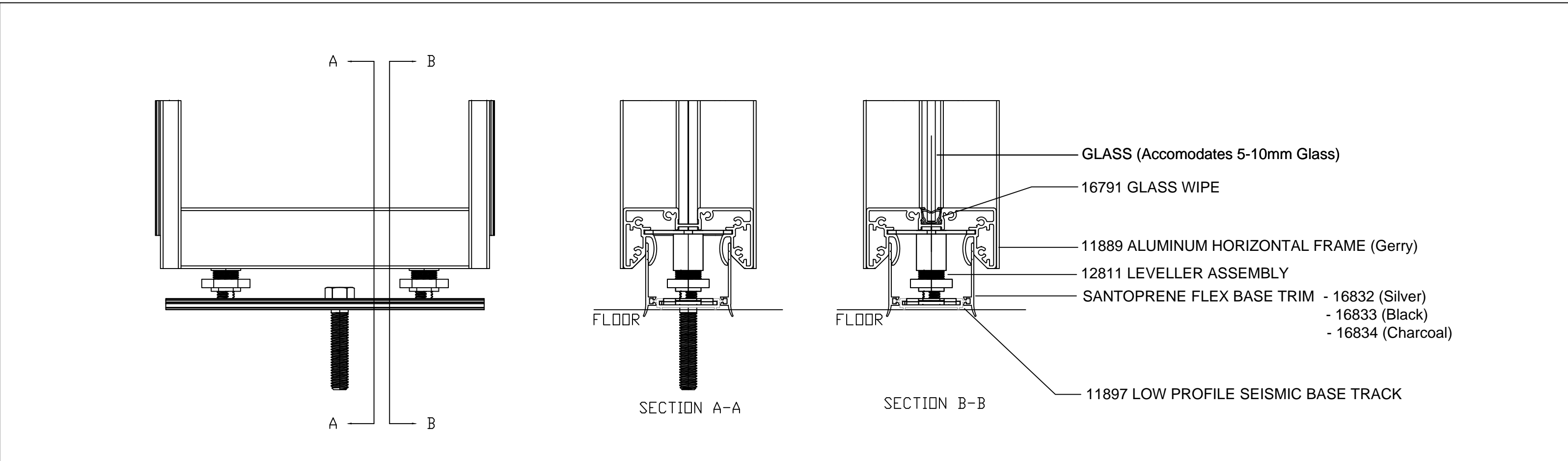


NOTE:  
CAUTION SHOULD BE TAKEN WHEN FASTENING TO POST TENSION  
SLABS OR TO FLOORS CONTAINING RADIANT HEATING. FLOORS MAY  
REQUIRE X-RAY TO ENSURE FASTENERS DO NOT CONFLICT WITH  
CONCEALED STRUCTURAL OR MECHANICAL ELEMENTS. ALL RELATIVE  
COSTS WILL BE PASSED ONTO THE CLIENT (NOT COVERED BY DIRT).

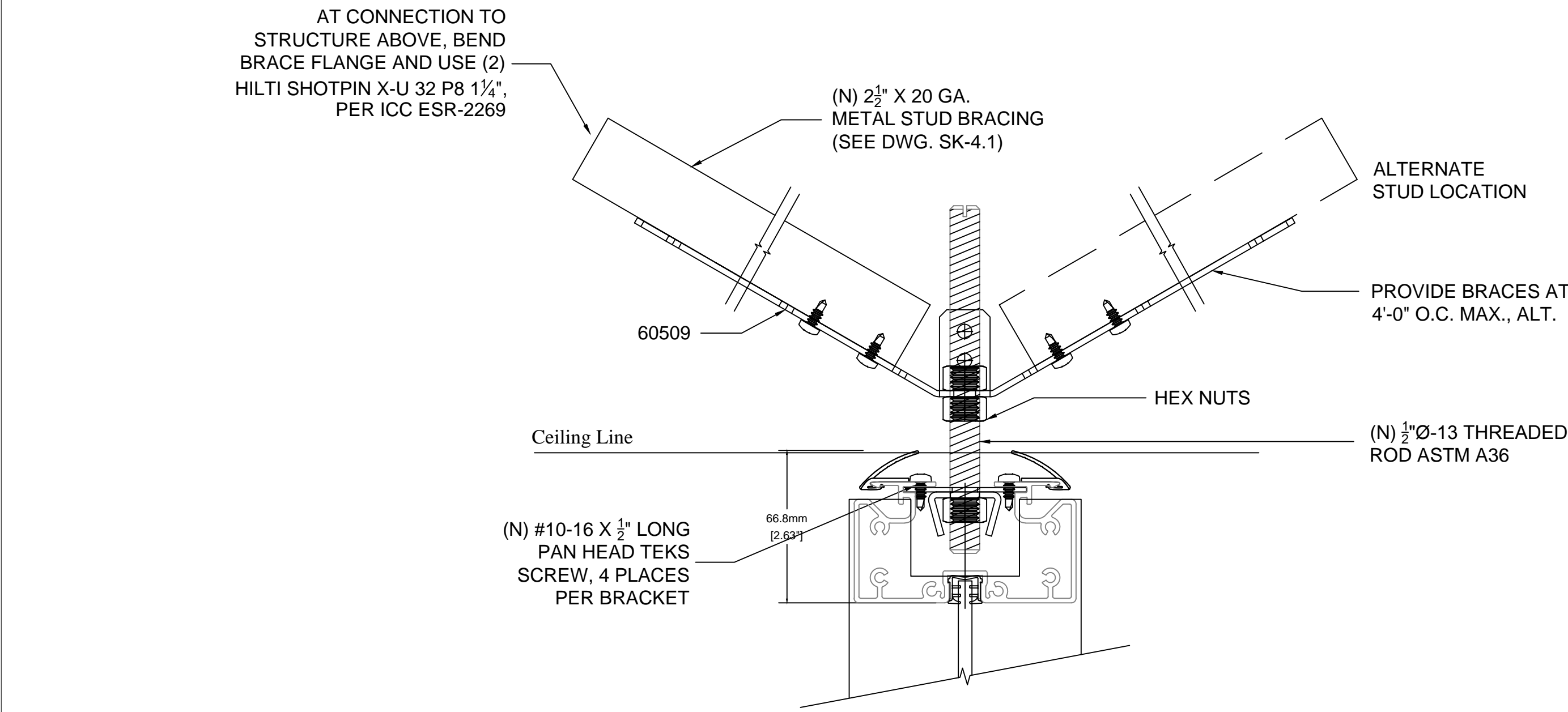
A THOROUGH REVIEW WITH LOCAL AUTHORITIES MAY BE REQUIRED  
TO ESTABLISH AN ACCEPTABLE ALTERNATIVE FASTENING METHOD  
WHICH MEETS BOTH INTERNATIONAL BUILDING CODE AND LOCAL  
REQUIREMENTS BASED ON THE INSTALLATION LOCATION.



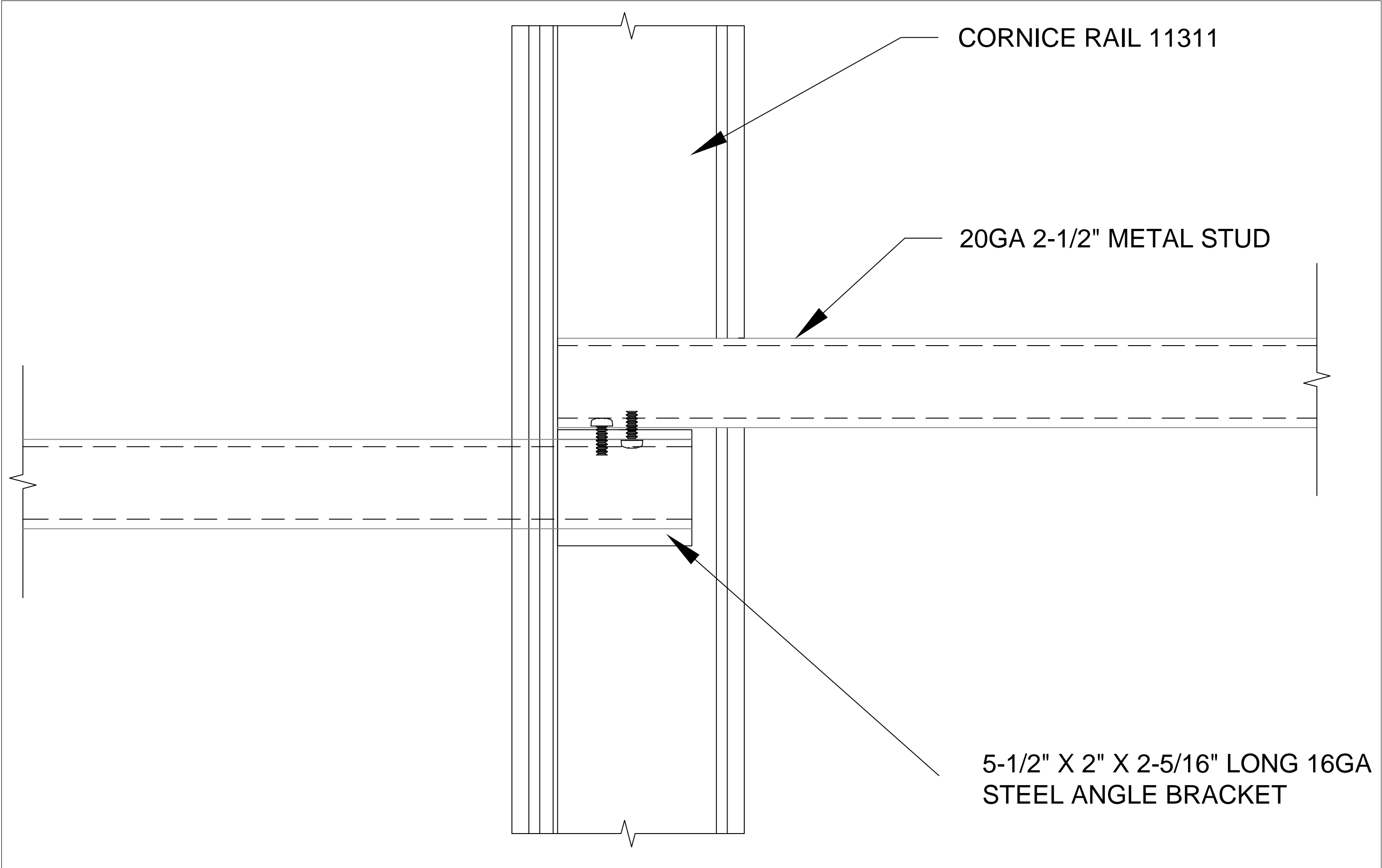
SEISMIC DETAIL: GLASS WALL ATTACHMENT AT BASE



SEISMIC DETAIL - GLASS WALL SECTION



GRID CEILING KICKER CONNECTION TO GLASS WALL



PLAN- MIDSPAN CEILING RAFTER

DRAWINGS FOR CEILING DEDUCTIVE ALTERNATE #1  
N.I.C. - FOR REFERENCE ONLY

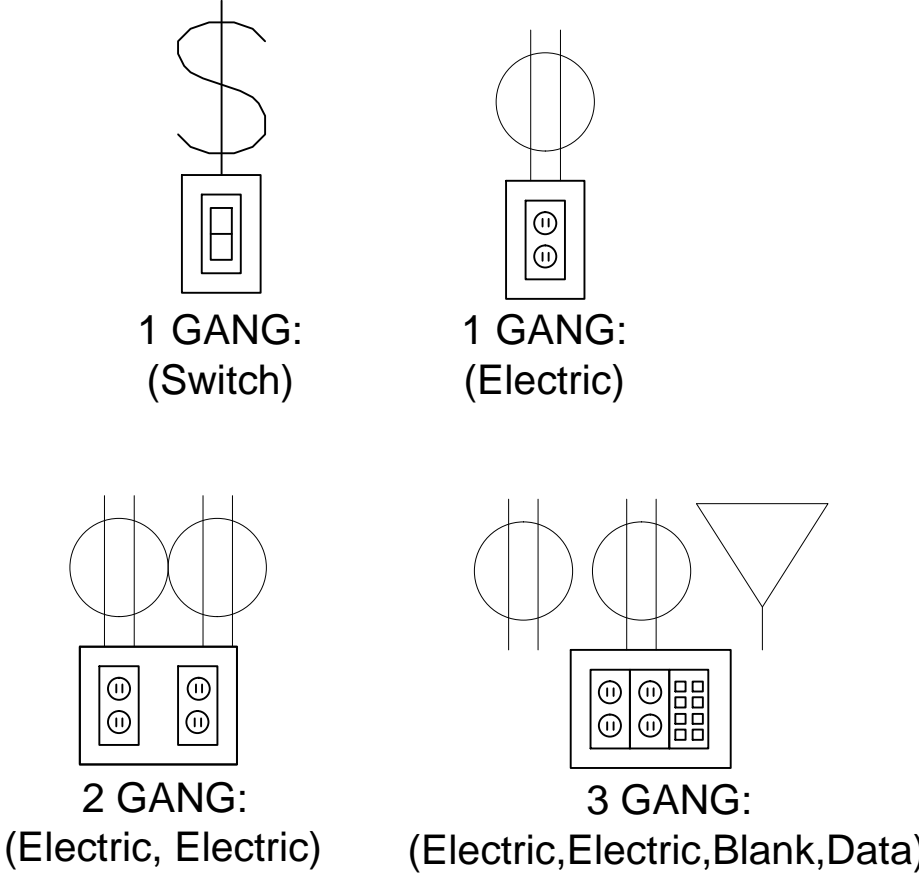
SHEET NOTES

KEY NOTES

- SEISMIC REQUIRED
- EXTRUSION PROFILE: RECTILINEAR
- FRAME FINISH: COM POWDER COAT  
AND VENEER WRAPPED
- BASE TRIM FINISH: SILVER SANTOPRENE
- PVC/GLASS WIPE: SILVER
- CEILING HEIGHT: 9' 6"
- CEILING TYPE: GRID
- FLOOR TYPE: CARPET
- DOORS:  
OFFICES - GOLDIE PIVOT DOORS AND BARN  
DOORS (4" STILE), WITH VENEER WRAPPED  
ALUMINUM- 30" C to C BAR PULL WITH 630  
FINISH.
- CONFERENCE ROOMS - FRAMELESS GLASS  
PIVOT DOORS NON-LOCKING- 30" C to C BAR  
PULL WITH 630 FINISH

LEGEND

ELECTRICAL PROVISION  
REQUIRED:



KEY PLAN

100% CD / BID SUBMISSION  
JUNE 29, 2015

CONSULTANTS:

ARCHITECT

POLYTECH ASSOCIATES INC.  
235 Pine Street, 17th Floor  
San Francisco, CA 94104  
TEL (415) 397-3117  
FAX (415) 397-1517

Drawing Title

DIRTT OVERALL PLAN

Approved: Project Director

Project Title

POST TRAUMATIC STRESS DIAGNOSIS (PTSD)  
EXPANSION & RENOVATION

Location

795 WILLOW ROAD, MENLO PARK, CA

Date

04/21/15

Checked

Author

Drawn

Checker

Project Number

640-235003

Building Number

BUILDING 334 & 360

Drawing Number

334 AI723D

Office of  
Construction  
and Facilities  
Management

Department of  
Veterans Affairs