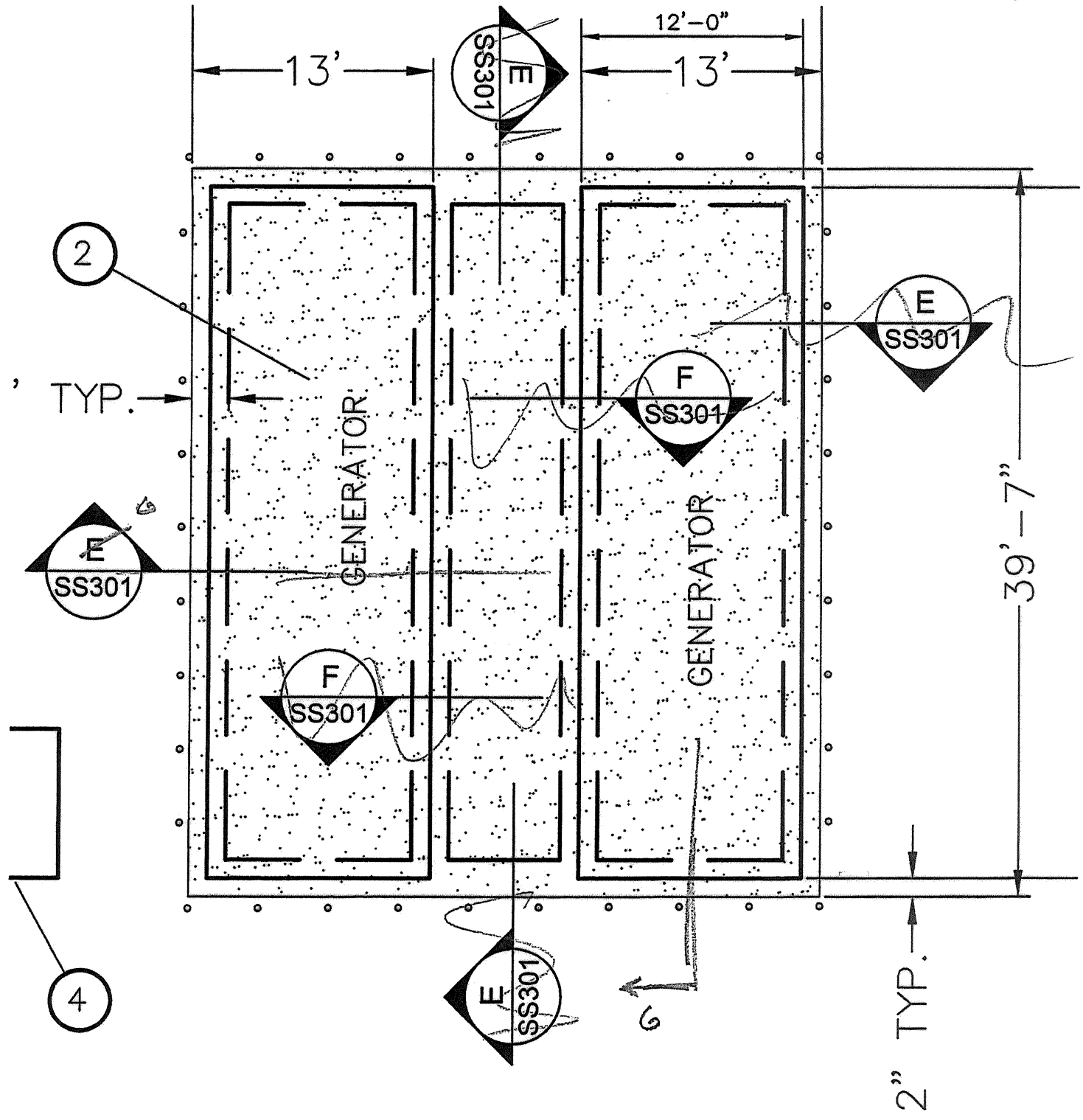


SUPPLEMENTAL INSTRUCTION TO BIDDERS

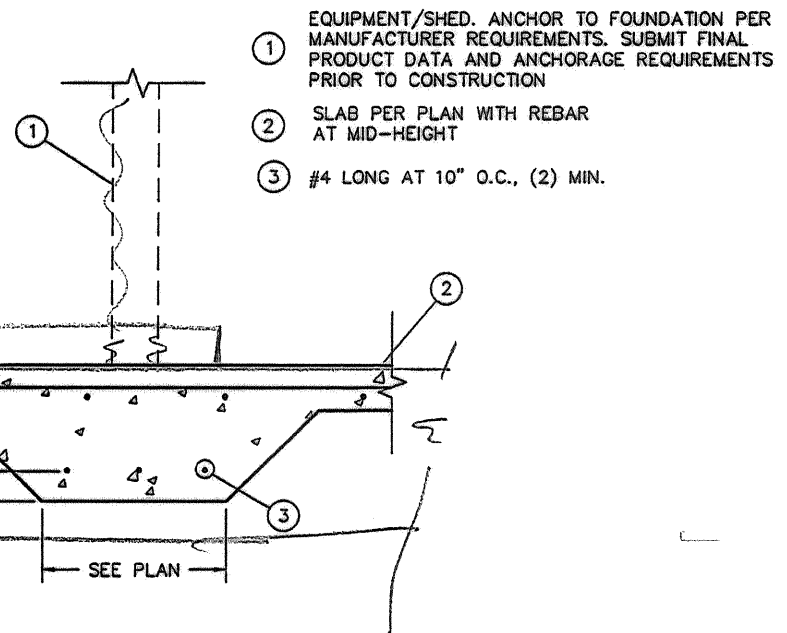
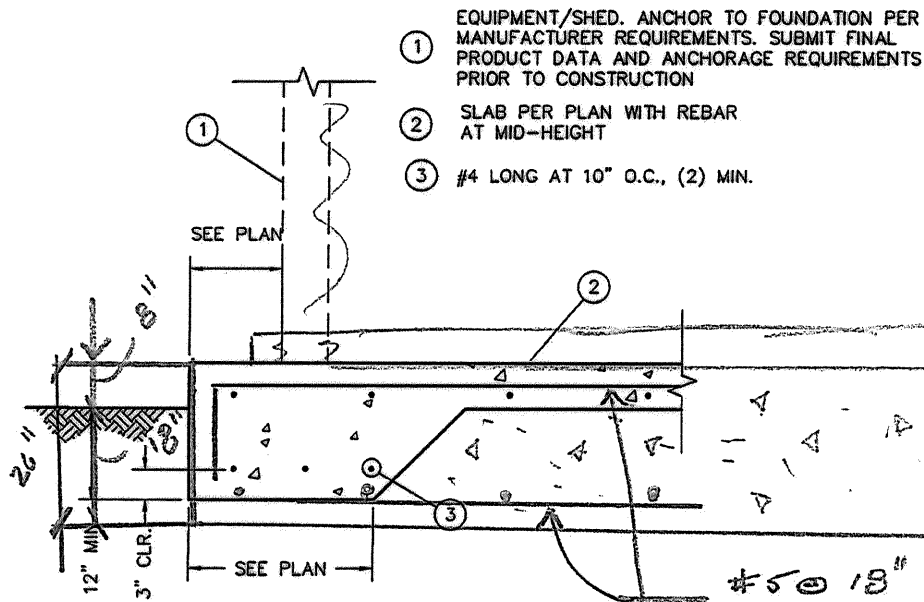
1/2

* Generator *
Foundation



B TYPICAL FOUNDATION
SS301 1" = 1"

C HOUSEKEEPING SLAB AND UTILITY TRENCH
SS301 1" = 1"



#5 @ 18" o.c.,
E.W., Top & bott
hook top mat as shown

~~**B**~~ EXTERIOR FOUNDATION AND SLAB SECTION (PART.)
SS301 1" = 1"

~~**C**~~ INTERIOR FOUNDATION AND SLAB SECTION (PART.)
SS301 1" = 1"

6 Generator Raft Foundation
301