

three inches = one foot
one and one-half inches = one foot
one inch = one foot
three-quarters inch = one foot
one-half inch = one foot
three-eighths inch = one foot
one-quarter inch = one foot
one-eighth inch = one foot

BASIS OF BEARING IS TRUE NORTH, NAD 83/91 DATUM, AS DERIVED BY GLOBAL POSITIONING SYSTEM OBSERVATIONS.

VERTICAL DATUM: NGVD 1929/56

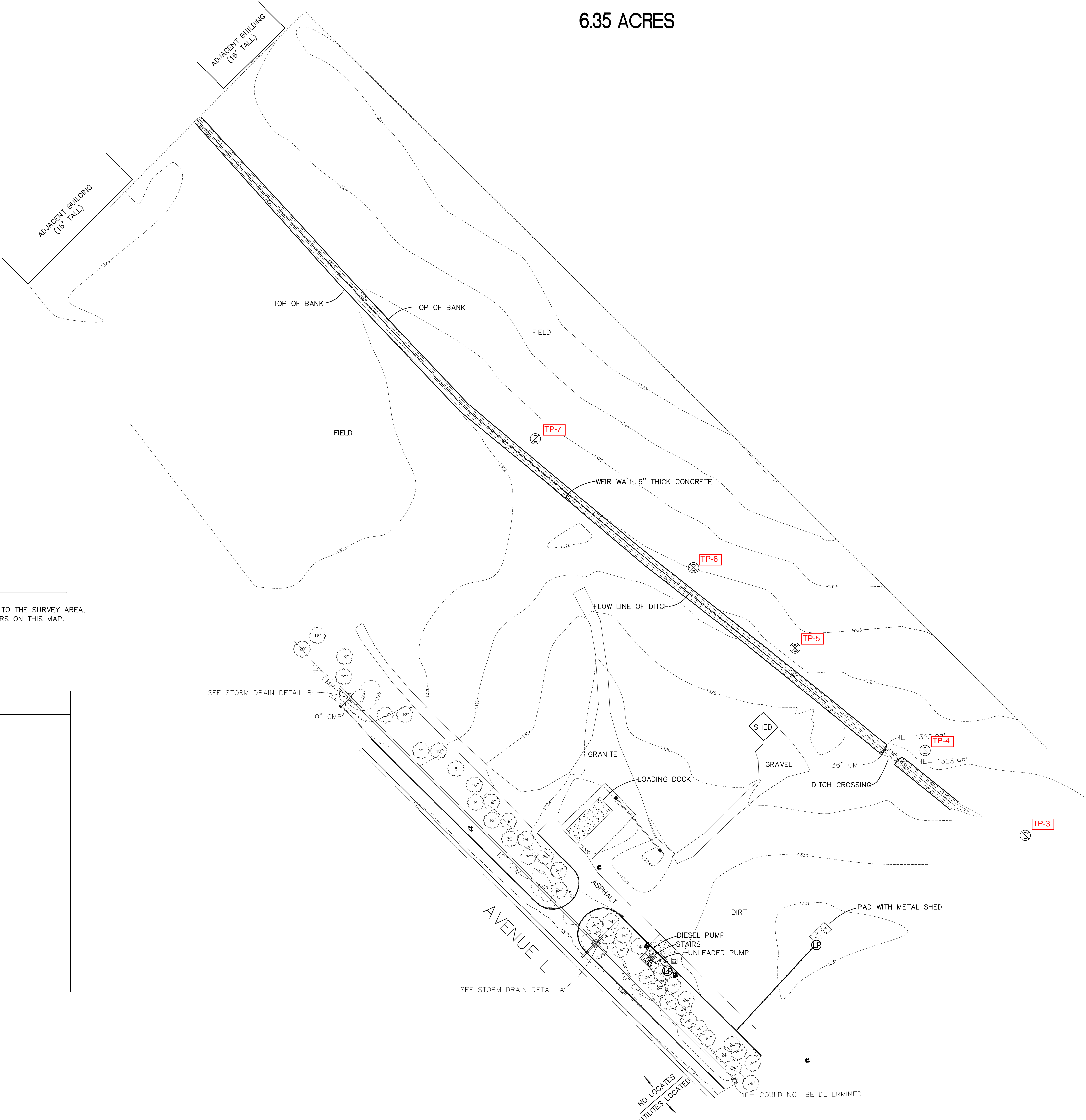
CONTOUR INTERVAL = 1'

SCALE: 1" = 50'

0' 25' 50' 100'

PV SOLAR FIELD LOCATION

6.35 ACRES



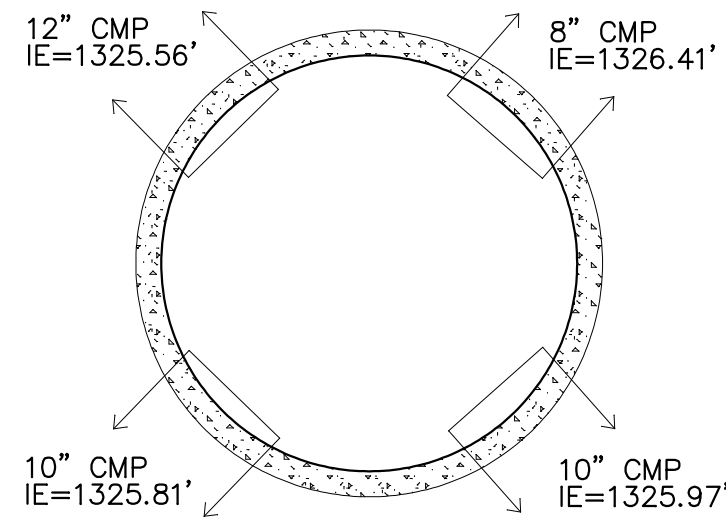
NOTES:

PV SOLAR SITE AREA HAS HAD SPOIL PILES DUMPED ONTO THE SURVEY AREA, HOWEVER THEY ARE NOT REPRESENTED BY THE CONTOURS ON THIS MAP.

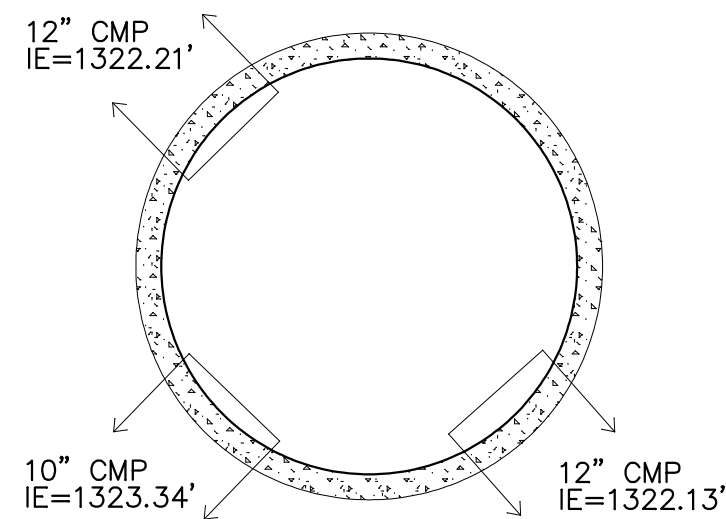
LEGEND:

- BOLLARD
- LIGHT POLE
- GEOTECHNICAL INVESTIGATION PIT
- TREE WITH DIAMETER IN INCHES
- EMERGENCY SHUT OFF SWITCH
- INLET 34" X 14" STEEL COVER
- INLET 3' X 3' STEEL COVER
- STORM DRAIN MANHOLE
- FIRE HYDRANT
- WATER VALVE
- FIRE EXTINGUISHER BOX
- 8' CHAINLINK FENCE
- FLOW LINE
- UNDERGROUND POWER LINE (LOCATE MARKS)
- STORM DRAIN
- EXISTING CONCRETE

STORM DRAIN DETAIL A (NOT TO SCALE):

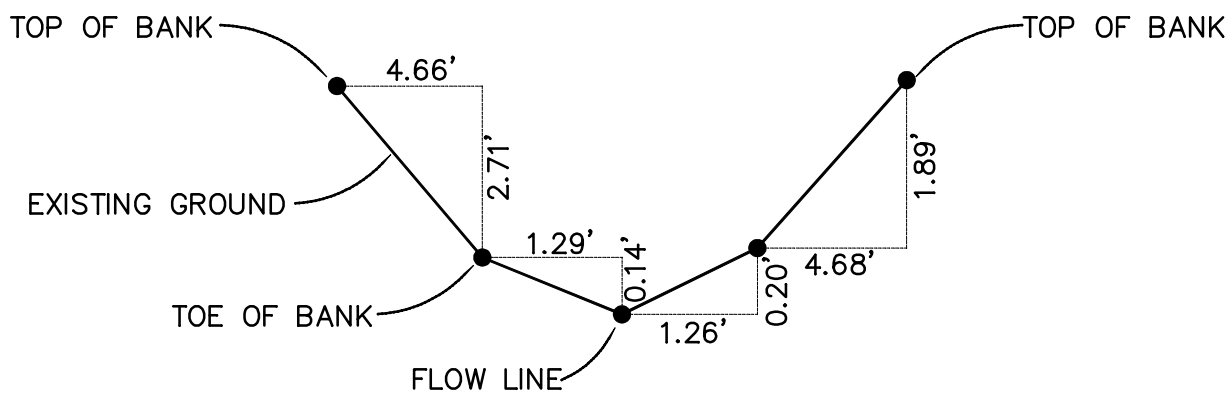


STORM DRAIN DETAIL B (NOT TO SCALE):



TYPICAL DITCH CROSS SECTION:

(NOT TO SCALE)



TP-1

CONSTRUCTION DOCUMENTS

<div>Revisions</div> <div>Date</div>		<div>CONSULTANTS:</div> <div> 431 OAK STREET, CENTRAL POINT, OREGON PHONE: 541-664-5599 E-MAIL: HERB@FARBERSURVEYING.COM</div>	<div>REGISTERED PROFESSIONAL LAND SURVEYOR</div> <div>ELECTRONIC COPY</div> <div>OREGON JULY 26, 1985 HERBERT A. FARBBER 2189 RENEWAL DATE 12-31-15</div>	<div>ARCHITECT/ENGINEERS:</div> <div> MANDEVILLE • BERGE • BOX ARCHITECTS ENGINEERS PLANNERS 500 UNION ST. SEATTLE, WA 98101</div>	<div>Drawing Title</div> <div>Approved: Project Director</div>	<div>Project Title</div> <div>Location</div> <div>Date</div> <div>Checked</div> <div>Drawn</div>	<div>Project Number</div> <div>Building Number</div> <div>Drawing Number</div> <div>Dwg. of</div>	<div>Office of Construction and Facilities Management</div> <div>Department of Veterans Affairs</div>
--------------------------------------	--	--	---	--	--	--	---	---