

ALTERNATIVE BID DEDUCTS.

- 1 REMOVE THE ASPHALT PAVEMENT REPAIR IN CIRCLE DRIVE, APPROXIMATELY 6,265 SF.
- 2 ALL LANDSCAPE WORK IN PROJECT INCLUDING PLANTINGS, SOIL COVERINGS, SPRINKLERS, SEATING WALLS, AND BIKE RACKS AND IRON FENCING.
- 3 DEDUCT INTERIOR NON LOAD BEARING WALLS AND DOORS IN VSO OFFICES, APPROXIMATELY 1523 SF THE SUITE PERIMETER WALL WILL BE BUILT AS INDICATED IN THE DRAWING.
- 4 DEDUCT INTERIOR NON LOAD BEARING WALLS AND DOORS IN EE OFFICES, APPROXIMATELY 650 SF THE SUITE PERIMETER WALL, AND DEDUCT INTERIOR NON LOAD BEARING WALLS AND DOORS IN MHV OFFICES, APPROXIMATELY 772 SF. THE SUITES PERIMETER WALL WILL BE BUILT AS INDICATED IN THE DRAWING.
- 5 NO WORK TO BE PERFORMED IN THE AREA MARKED BETWEEN COLUMN LINES 105 AND 112, APPROXIMATELY 970 SF. EEO AND OFFICES WILL REMAIN IN PRESENT CONDITIONS.
- 6 NO WORK TO BE PERFORMED IN THE AREA MARKED BETWEEN COLUMN LINES 105 AND 108, APPROXIMATELY 2660 SF. CHAPLAIN SERVICES AREA WILL REMAIN IN PRESENT CONDITIONS.

SHEET NOTES:

- 1 CONTRACTOR SHALL PROVIDE AND INSTALL DUAL-RELAY DECORA WALL SWITCH PASSIVE INFRARED OCCUPANCY SENSOR LEVITON CAT No. ODS0D-TD.
- 2 CONTRACTOR SHALL PROVIDE AND INSTALL DECORA WALL SWITCH PIR VACANCY SENSOR LEVITON CAT No. ODS15-TD.
- 3 CONTRACTOR SHALL PROVIDE AND INSTALL NEW LIGHTING CONTROL PANEL LEVITON "GREENMAX RELAY CONTROL.
- 4 CONTRACTOR SHALL CONNECT EXTERIOR LT TO CIRCUIT DF-FA-12 PROVIDE CONDUITS AND WIRES.
- 5 CONTRACTOR SHALL PROVIDE AND INSTALL CEILING FANS AND CONNECT POWER TO THEM AS SHOWN ON THE DRAWING.
- 6 PROVIDE MODERN FAN COMPANY #009B MULTI-FAN SPEED CONTROL. ALL 3 FANS TO CONTROL ON A SINGLE CIRCUIT.
- 7 CONTRACTOR SHALL CONNECT NEW EXIT SIGN TO EMERGENCY LIGHTING CIRCUIT.
- 8 CONTRACTOR SHALL ADD 0-10V DIMMING RELAY TO LIGHTING CONTROL PANEL TO CONTROL THE DIMMING LIGHTING SYSTEM LOCATED AT WORKSHOP ROOM.

| LIGHTING FIXTURE SCHEDULE | | | | | | | |
|---------------------------|--|-------|----------------------------------|-------|-------|--------------------------|---|
| TAG | MANUFACTURER AND CAT. No. | LAMPS | | WATTS | VOLTS | MOUNTING | DESCRIPTION AND REMARKS |
| | | QTY | LAMP TYPE | | | | |
| A | FOCAL POINT. AERION. CAT # FA22AC 18X40E 277 WH | 1 | F40 BX | 47 | 277 | RECESSED | 2 x 2 FLUORESCENT LIGHT FIXTURE. THE CENTER LAMP CHAMBER PROVIDES MINIMAL CONTRAST BETWEEN THE DIFFUSER AND SIDE REFLECTORS CREATING EVEN ILLUMINATION. 20 GA STEEL REFLECTORS FINISHED IN MATTE SATIN WHITE POWDER COAT. PROVIDE ELECTRONIC BALLAST. |
| B | FOCAL POINT. AERION. CAT # FAR2AC 2TSE 277WH | 2 | F54T5/835/ HOIALTO 3500K PHILIPS | 91 | 277 | RECESSED | 2 x 4 FLUORESCENT LIGHT FIXTURE. THE CENTER LAMP CHAMBER PROVIDES MINIMAL CONTRAST BETWEEN THE DIFFUSER AND SIDE REFLECTORS CREATING EVEN ILLUMINATION. 20 GA STEEL REFLECTORS FINISHED IN MATTE SATIN WHITE POWDER COAT. PROVIDE ELECTRONIC BALLAST. |
| C | PATHWAY LIGHTING. COVENTRY. CAT # BV LED 1100 3K SCLPF | - | LED | 15.43 | 277 | RECESSED | LED DOWNLIGHTING PARABOLIC REFLECTOR REDIRECTS SPILL LIGHT FROM THE LAMP AND ELIMINATES HIGH ANGLE. LED MODULES IS ACCESSIBLE FROM BELOW. SOFT SPECULAR CLEAR ALZAK TRIM FINISH. |
| C1 | PATHWAY LIGHTING. COVENTRY. CAT # BV LED 1100 3K SCLPF DMX | - | LED | 15.43 | 277 | RECESSED | LED DOWNLIGHTING PARABOLIC REFLECTOR REDIRECTS SPILL LIGHT FROM THE LAMP AND ELIMINATES HIGH ANGLE. LED MODULES IS ACCESSIBLE FROM BELOW. SOFT SPECULAR CLEAR ALZAK TRIM FINISH. DIMMING IS COMPATIBLE WITH 0-10 VOLTS DIMMING CONTROL. |
| D | LUMENPULSE LUMENLINE. CAT # LL12RGG WH 273 DRO 36K WH | - | LED | 21 | 277 | WALL MOUNTED | 36" x 2" DIRECT LIGHTING REGRESSED LENS. FINISHED IN HIGH REFLECTIVE MATTE WHITE POWDER COATED REFLECTOR. |
| E | FOCAL POINT. SEEM 4 CAT # FSN4 FLX P1 TS 277E | 1 | F54T5/835/ HOIALTO 3500K PHILIPS | 53 | 277 | SURFACE MOUNTED | 4' LONG FLUORESCENT LIGHT FIXTURE. EXTRUDED ALUMINUM HOUSING. OPTIC STEEL FINISHED IN HIGH REFLECTANCE WHITE POWDER COAT. PROVIDE ELECTRONIC BALLAST. |
| F | FOCAL POINT. INTELLIGENT DOWNLIGHT CAT # FL44 F20 LED L35 LD 1275F TL 44WH | - | LED | 29 | 277 | RECESSED | 4.5' x 4.5' EXTERIOR DOWNLIGHTING. DIE-CAST ALUMINUM HEAT SINK DESIGNED FOR MAXIMUM THERMAL DISSIPATION. FL44FT HOUSING INCLUDES MOUNTING CLIPS. |
| G | EXISTING | - | - | - | - | RECESSED | EXISTING |
| H | LUMEN PULSE CAT # LL12R RG 277- 8R033KFGWH | - | LED | 83 | 277 | RECESSED | 8' x 2' LED FIXTURE SUITABLE FOR USE WITH DRYWALL CEILING. DURABLE POLYESTER POWDER COAT FINISH FOR TRIM. ALUMINUM EXTRUSION HOUSING. 2" WIDE. |
| J | LSI INDUSTRIES CAT # S132 S8010 UE | 1 | F32T8/835 3500K PHILIPS | 32 | 277 | SURFACE | 48" ONE LAMP STRIP (T8) UL/ULC LISTED |
| K | JUNO LIGHTING INDY ROUGH IN CAT # SD63035277V REFLECTOR CAT # SAWS6AQPPF | - | LED | 36 | 277 | RECESSED | 6" ROUND WALL WASH DOWN LIGHT. LIGHT ENGINE UTILIZES REMOTE PHOSPHOR LENS AND MIXING CHAMBER TO ENSURE PERFECTLY MIXED LIGHT. LED DRIVER POWER FACTOR 70.8. HEAVY GAUGE STEEL FRICTION CLIPS SECURELY HOLDS CONES IN CEILING. |
| L | ECLIPSE LIGHTING LYON (LY) CAT # LW5LE040K277BK | - | LED | 40 | 277 | WALL MOUNT 11'-0" A.F.F. | LED LIGHT WALL MOUNT. HIGH-TEMPERATURE, NON-AGING BLACK EPDM AND NEOPRENE RUBBER CONCEALED IN HOUSING POKED AND ENCLOSED BY CAST IN IRON DRIP SHIELD AND REAR WIRE ENTRANCE HOLE TO PROTECT AGAINST OUTSIDE CONTAMINANTS. HEAVY WALL CAST ALUMINUM. LED INCLUDED. CLEAR TEMPERED GLASS STANDARD. SPECULAR ALUMINUM FOR HIGH EFFICIENCY. |
| P | TECHLIGHTING CAT # 4700FJFIRE | - | LED | 35 | 12V | PENDANT 49'-0" | THIS FIXTURE IS LOCATED AT COFFEE SHOP MAIN COUNTER AND DELL. |
| X | ISOLATE LIGHTING CAT # ELT-AC-G-1C-BA-SC | 3 | LED | 3.0 | 277 | SURFACE CEILING | EXIT SIGN PRECISION DIE-CAST ALUMINUM HOUSING WITH FLAWLESS, LASER-FORMED ACRYLIC LENS. |

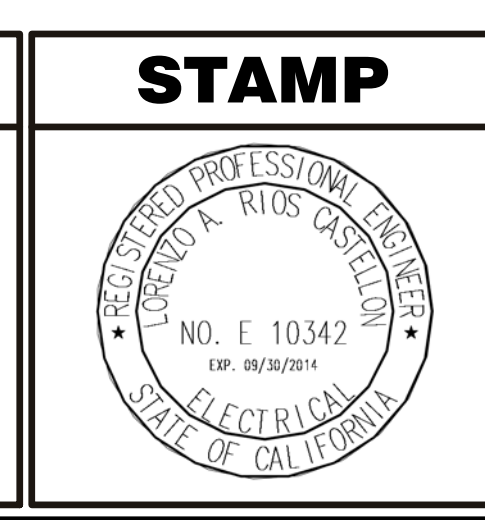
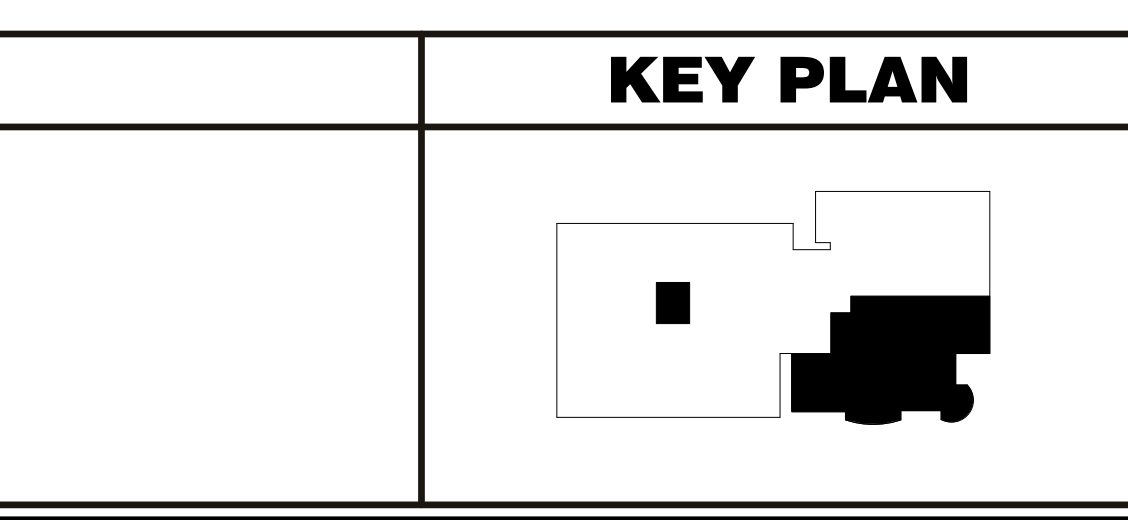
GENERAL NOTES:

1. ALL FIXTURES TO BE STANDARD OPTIONS UNLESS OTHERWISE NOTED.

1 NEW LIGHTING PLAN
SCALE: 1/8" = 1'-0"
NORTH

| ISSUE FOR BID | |
|---------------------------------------|----------|
| FINAL ISSUE FOR BID (13-327) | 4/28/16 |
| ISSUE PER RFI 005 (13-324) | 11/30/15 |
| ISSUE FOR BID (13-311) | 12/23/14 |
| FINAL CONSTRUCTION DOCUMENTS (13-304) | 9/19/14 |
| 100% CONSTRUCTION DOCUMENTS (13-289) | 7/17/14 |
| 75% CONSTRUCTION DOCUMENTS (13-285) | 6/27/14 |
| 100% DESIGN DEVELOPMENT (13-266) | 3/28/14 |
| 100% SCHEMATIC DESIGN (13-237) | 1/20/14 |
| 50% SCHEMATIC DESIGN (13-227) | 12/20/13 |
| PROGRESS REPORT | 11/12/13 |
| Revisions: | Date |

CONSULTANTS:



ARCHITECT/ENGINEERS:

ADVANCE DESIGN CONSULTANTS, INC.

998 PARK AVENUE SAN JOSE CALIFORNIA 95126
P: (408) 287-1881 F: (408)294-3186 www.adcengineers.com

Drawing Title:
NEW LIGHTING PLAN

Approved: Project Director

Project Title:
VA MEDICAL CENTER, MATHER CA BUILDING 650, 1ST FLOOR SEISMIC RENOVATION AND EXPANSION

Project Number:
612-126

Building Number:
B650

Location:
10355 HOSPITAL WAY, MATHER, CA

Date: 12/23/14

Checked: P. LOPEZ

Drawn: J. AGUIRRE

Dwg. of: **EL101**

Office of Facilities Management

Department of Veterans Affairs