

three inches = one foot
one and one half inch = one foot
one inch = one foot
three quarters inch = one foot
one half inch = one foot
one quarter inch = one foot
three eighths inch = one foot
one eighth inch = one foot

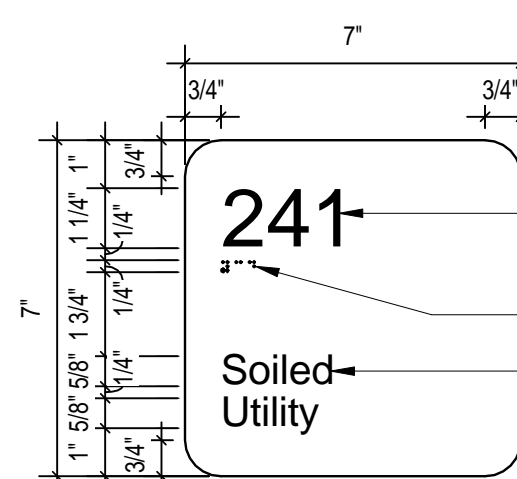
ROOM FINISH SCHEDULE											
BUILDING No.	ROOM No.	ROOM NAME	BASE	FLOOR FINISH	WALLS			CEILING	CEILING HEIGHT	COMMENTS	
					NORTH	EAST	SOUTH	WEST			
	101	ELEVATOR MACHINE ROOM	(none)	(none)	(none)				(none)		
	201	LOBBY	VB-1	CPT-1	PT-2	PT-3	PT-1	PT-2	ACT-1		
	202	FISCAL OFFICE	VB-1	CPT-1	PT-2	PT-1	PT-1	PT-1	ACT-1		
	203	FISCAL DEPT.	VB-1	CPT-1	PT-3	PT-3	PT-2	PT-2	ACT-1		
	204	ELECTRICAL ROOM	(none)	SC	PT-1	PT-1	PT-1	PT-1	(none)		
	205	STORAGE	VB-1	VCT-1	PT-1	PT-1	PT-1	PT-1	ACT-1		
	206	FISCAL OFFICE	VB-1	VCT-1	PT-2	PT-1	PT-1	PT-1	ACT-1		
	207A	CORRIDOR	VB-1	CPT-1	PT-1	PT-1	PT-1	PT-1	ACT-1		
	207B	CORRIDOR	VB-1	CPT-1	PT-1	PT-1	PT-1	PT-1	ACT-1		
	208	RESTROOM	CT-1A	CT-1	PT-1/CT-2	PT-1/CT-2	PT-1/CT-2	PT-1/CT-2	ACT-1	COUNTERS TO BE SS CORIAN, ANTARCTICA	
	209	RESTROOM	CT-1A	CT-1	PT-1/CT-2	PT-1/CT-2	PT-1/CT-2	PT-1/CT-2	ACT-1	COUNTERS TO BE SS CORIAN, ANTARCTICA	
	210	CONFERENCE A	VB-1	CPT-1	PT-3	PT-2	PT-2	PT-2	ACT-1		
	211	HBPC OFFICE	VB-1	CPT-1	PT-3	PT-2	PT-2	PT-2	ACT-1		
	212	HBPC	VB-1	CPT-1	PT-2	PT-3	PT-2	PT-2	ACT-1		
	213	ELECTRICAL	(none)	SC	PT-1	PT-1	PT-1	PT-1	(none)		
	214	STORAGE	VB-1	VCT-1	PT-1	PT-1	PT-1	PT-1	ACT-1		
	215	CORRIDOR	VB-1	CPT-1	PT-1	PT-1	PT-1	PT-1	ACT-1		
	216	CPAC	VB-1	CPT-1	PT-2	PT-3	PT-2	PT-2	ACT-1		
	219	VISIN OFFICE	VB-1	CPT-1	PT-2	PT-2	PT-3	PT-2	ACT-1		
	220	CPAC OFFICE	VB-1	CPT-1	PT-2	PT-2	PT-3	PT-2	ACT-1		
	221	RESTROOM	CT-1A	CT-1	PT-1/CT-2	PT-1/CT-2	PT-1/CT-2	PT-1/CT-2	ACT-1	COUNTERS TO BE SS CORIAN, ANTARCTICA	
	222	RESTROOM	CT-1A	CT-1	PT-1/CT-2	PT-1/CT-2	PT-1/CT-2	PT-1/CT-2	ACT-1	COUNTERS TO BE SS CORIAN, ANTARCTICA	
	223	RESTROOM	CT-1A	CT-1	PT-1/CT-2	PT-1/CT-2	PT-1/CT-2	PT-1/CT-2	ACT-1	COUNTERS TO BE SS CORIAN, ANTARCTICA	
	224	CORRIDOR	VB-1	CPT-1	PT-1	PT-1	PT-1	PT-1	ACT-1		
	225	FILE STORAGE	VB-1	CPT-1	PT-1	PT-1	PT-1	PT-1	ACT-1		
	226	HAS	VB-1	CPT-1	PT-2	PT-2	PT-3	PT-2	ACT-1		
	227	STORAGE	VB-1	VCT-1	PT-1	PT-1	PT-1	PT-1	ACT-1		
	228	COPY CENTER	VB-1	VCT-1	PT-1	PT-1	PT-1	PT-1	ACT-1		
	229	HAS OFFICE	VB-1	CPT-1	PT-2	PT-1	PT-1	PT-1	ACT-1		
	230	HAS OFFICE	VB-1	CPT-1	PT-2	PT-1	PT-1	PT-1	ACT-1		
	231	HAS OFFICE	VB-1	CPT-1	PT-2	PT-1	PT-1	PT-1	ACT-1		
	232	HIMS	VB-1	CPT-1	PT-2	PT-2	PT-3	PT-2	ACT-1		
	233	STAMP ROOM	VB-1	CPT-1	PT-1	PT-1	PT-1	PT-1	ACT-1		
	234	HIMS OFFICE	VB-1	CPT-1	PT-2	PT-2	PT-3	PT-2	ACT-1		
	235	SECRETARY	VB-1	CPT-1	PT-1	PT-1	PT-1	PT-1	ACT-1		
	236	HIMS FILE ROOM	VB-1	CPT-1	PT-2	PT-2	PT-2	PT-3	ACT-1		
	237	RESTROOM	CT-1A	CT-1	PT-1/CT-2	PT-1/CT-2	PT-1/CT-2	PT-1/CT-2	ACT-1	COUNTERS TO BE SS CORIAN, ANTARCTICA	
	238	RESTROOM	CT-1A	CT-1	PT-1/CT-2	PT-1/CT-2	PT-1/CT-2	PT-1/CT-2	ACT-1	COUNTERS TO BE SS CORIAN, ANTARCTICA	
	239	RESTROOM	CT-1A	CT-1	PT-1/CT-2	PT-1/CT-2	PT-1/CT-2	PT-1/CT-2	ACT-1	COUNTERS TO BE SS CORIAN, ANTARCTICA	
	240	CORRIDOR	VB-1	CPT-1	PT-1	PT-1	PT-1	PT-1	ACT-1		
	241	JAN	VB-1	VCT-1	PT-1	PT-1	PT-1	PT-1	(none)		
	242	TELCOM	VB-1	VCT-1	PT-1	PT-1	PT-1	PT-1	(none)		
	243	CONFERENCE B	VB-1	CPT-1	PT-1	PT-1	PT-3	PT-3	ACT-1		
	244	CONFERENCE C	VB-1	CPT-1	PT-1	PT-1	PT-3	PT-1	ACT-1		
	245	CONFERENCE D	VB-1	CPT-1	PT-1	PT-3	PT-3	PT-1	ACT-1		
	246	BREAKROOM	VB-1	LVT-1	PT-3	PT-1	PT-1	PT-3	ACT-1	VERTICAL SURFACES TO BE PLAM-1; WILSONART, LANDMARK WOOD 7981K-12; COUNTERTOPS TO BE CORIAN, ANTARCTICA	
	247	JAN	(none)	SC	PT-1	PT-1	PT-1	PT-1	(none)		
	C108-1	EXIST. OFFICE	EXISTING	EXISTING	EXISTING	EXISTING	EXISTING	EXISTING	(none)		
	C109-1	EXIST. OFFICE	EXISTING	EXISTING	EXISTING	EXISTING	EXISTING	EXISTING	(none)		
	C110-1	OXYGEN STORAGE	EXISTING	EXISTING	EXISTING	EXISTING	EXISTING	EXISTING	(none)		
	C111-1	EXIST. OFFICE	EXISTING	EXISTING	EXISTING	EXISTING	EXISTING	EXISTING	(none)		
	C112-1	EXIST. OFFICE	EXISTING	EXISTING	EXISTING	EXISTING	EXISTING	EXISTING	(none)		
	C113-1	EXIST. OFFICE	EXISTING	EXISTING	EXISTING	EXISTING	EXISTING	EXISTING	(none)		
	C114-1	FILING ROOM	EXISTING	EXISTING	EXISTING	EXISTING	EXISTING	EXISTING	(none)		
	C116-1	EXIST. OFFICE	EXISTING	EXISTING	EXISTING	EXISTING	EXISTING	EXISTING	(none)		
	C116-2	STORAGE	(none)	(none)	(none)	(none)	(none)	(none)	(none)		
	EL1	ELEVATORS	VB-1	LVT-1	(none)	N/A	N/A	N/A	(none)	9'-0"	
	ST1	STAIR 1	VB-1	RT-1	PT-1	PT-1	PT-1	PT-1	(none)	9'-0"	TREADS TO BE JOHNSONITE; STYLE & COLOR TO BE SELECTED BY COR
	ST2	STAIR 2	VB-1	RT-1	PT-1	PT-1	PT-1	PT-1	ACT-1	9'-0"	TREADS TO BE JOHNSONITE; STYLE & COLOR TO BE SELECTED BY COR

BASE FINISH LEGEND							
BASE FINISH	MATERIAL	MANUFACTURER	MANUFACTURER No	PATTERN	COLOR	SIZE	BASE COMMENTS
CT-1A	CERAMIC TILE	DALTILE	EQ11	EXQUISITE	CHANTILLY	2"X4"	
EXISTING	VINYL BASE			EXISTING	EXISTING		MATCH EXISTING
VB-1	VINYL BASE	JOHNSONITE	68		WHITE SAND	N/A	

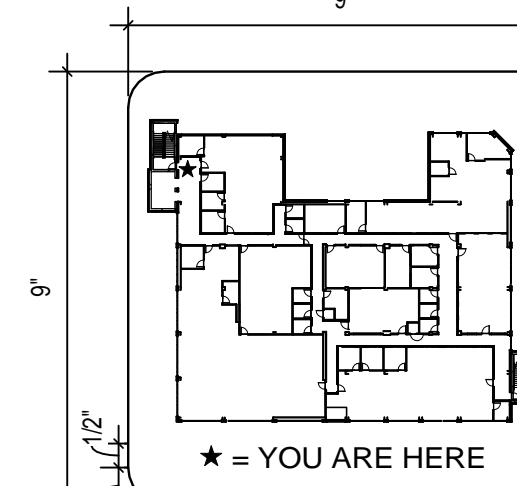
FLOOR FINISH LEGEND							
FLOOR FINISH	MATERIAL	MANUFACTURER	MANUFACTURER No.	PATTERN	COLOR	SIZE	FLOOR FINISH COMMENTS
CPT-1	CARPET	MANNINGTON	15309	HAND SCRAPPED	SHAPE	12"X18"	N/A
CT-1	CERAMIC TILE	DALTILE	CN92	CONCRETE CITY	ELM	6"X6"	MAPEI - GRAY
EXISTING	N/A	N/A	N/A	N/A	N/A	N/A	
LVT-1	LUXURY VINYL TILE	ARMSTRONG	TP781	NATURAL CREATIONS MYSTIX	STREAM NATURAL	18"X18"	N/A
RT-1	RUBBER STAIR TREAD	JOHNSONITE	TBD BY COR				N/A
SC	SEALED CONCRETE	N/A	N/A	N/A	N/A	N/A	N/A
VCT-1	VINYL COMPOSITION TILE	JOHNSONITE	V-212	AZROCK COLLECTION	LAMB'S WOOL	12"X12"	N/A

WALL FINISH LEGEND							
WALL FINISH	MATERIAL	MANUFACTURER	MANUFACTURER No	PATTERN	COLOR	SIZE	WALL FINISH COMMENTS
CT-2	CERAMIC TILE	DALTILE		EQ11 - MOSAIC	EXQUISITE - CHANTILLY	2"X4"	MAPEI - SILVER
EXISTING	N/A	N/A		N/A	N/A	N/A	WAINSCOT
PT-1	PAINT	SHERWIN WILLIAMS		SW20071	SAND DOLLAR	N/A	FIELD
PT-1/CT-2	PAINT AND CERAMIC TILE WAINSCOT	SHERWIN WILLIAMS/DALTILE		SW20071/EQ11	SAND DOLLAR/EXQUISITE CHANTILLY	N/A	RESTROOMS AND WATER FOUNTAINS
PT-2	PAINT	SHERWIN WILLIAMS	0"	SW20052	UTTERLY BEIGE	N/A	ACCENT
PT-3	PAINT	SHERWIN WILLIAMS		SW20201	MOODY BLUE	N/A	ACCENT

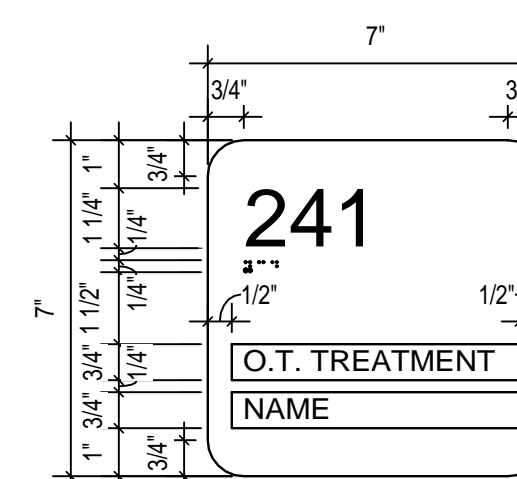
- NOTE:**
1. ALL GROUT TO BE SEALED.
2. ALL CERAMIC TILE FLOORS TO HAVE A NON-SLIP SURFACE.
3. DOOR TRIM PAINT TO BE SW6099 SAND DOLLAR, SEMI-GLOSS.
4. HAND RAILS TO BE IN ALL CORRIDORS AND LOBBY; ACROVYN, STYLE #HRBW-10C. TOP WOOD HANDRAIL COLOR: #399 CHERRY. HORIZONTAL REVEAL COLOR: #254 WHEAT. BASE RAIL COLOR: #196 FAWN.
5. CRASH RAILS TO BE IN ALL CORRIDORS AND LOBBY; TO BE ACROVYN, #196 FAWN



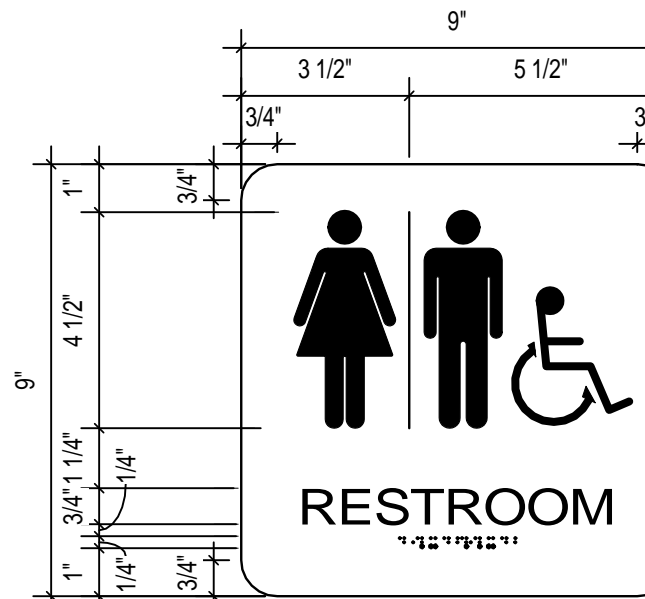
SIGN TYPE A



SIGN TYPE D

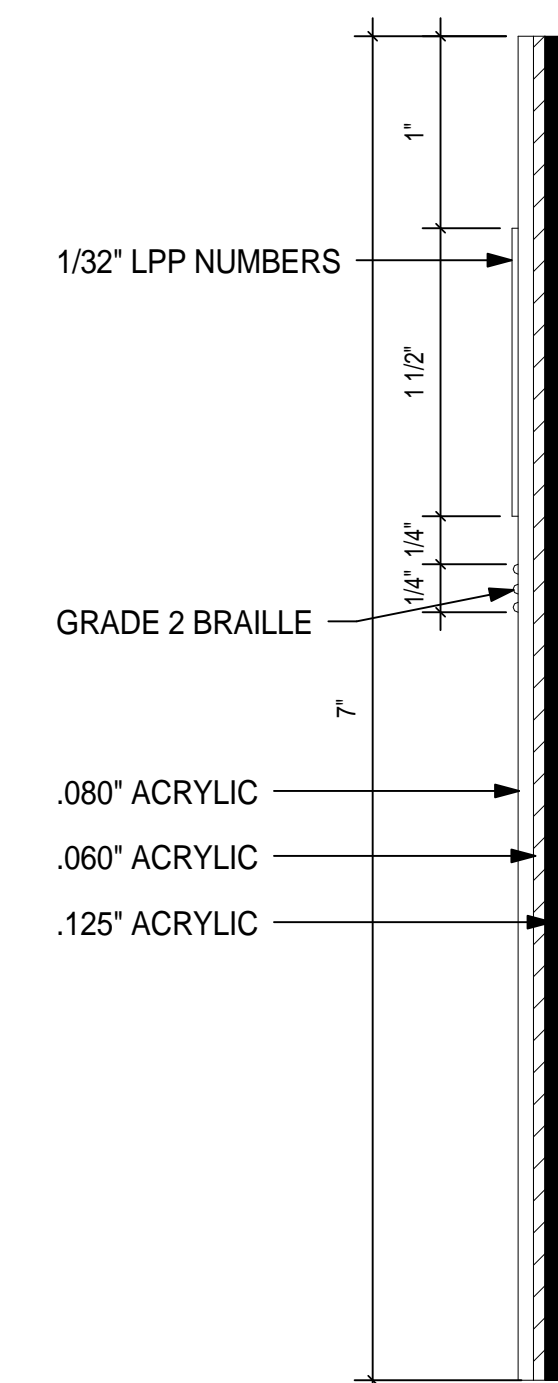


SIGN TYPE B

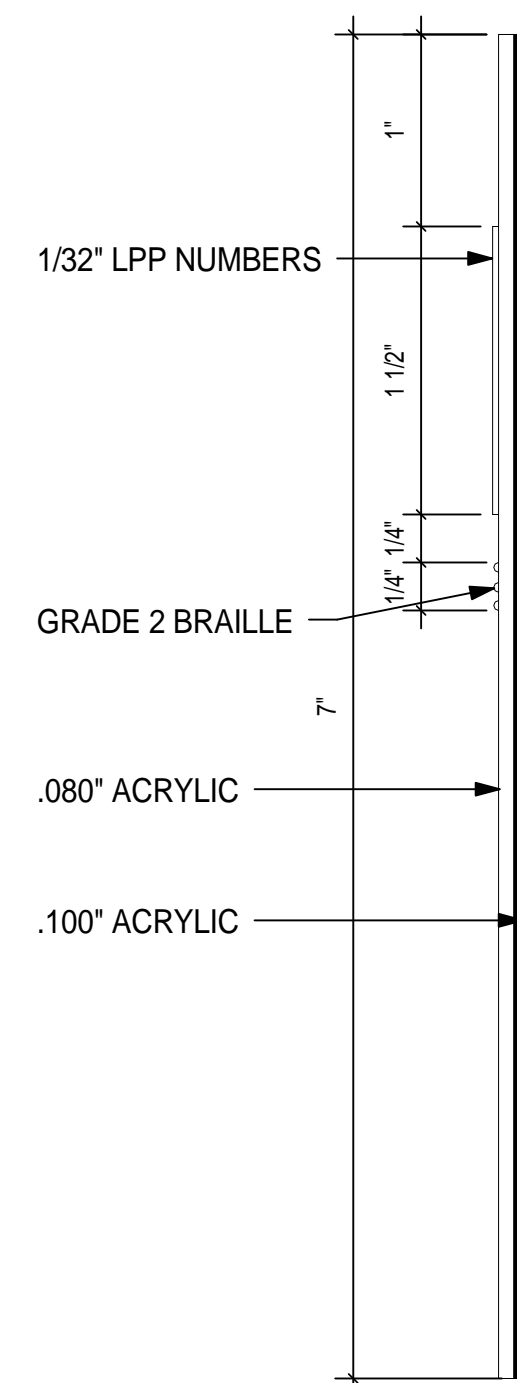


SIGN TYPE C

SIGNAGE ELEVATIONS



SIGNAGE SECTION SIGN TYPE - A



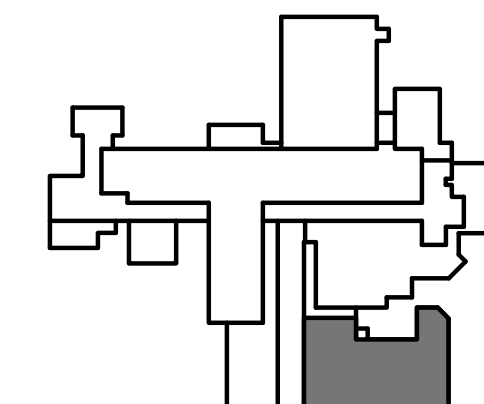
SIGNAGE SECTION SIGN TYPE - B

SIGNAGE PLACEMENT ELEV.

WINDOW SHADES TO BE HUNTER DOUGLAS CONTRACT : ROLLER SHADES : GLACIER SCREEN HD2001, 1% OPENNESS COLOR: WHITE / SAND

ALL WINDOW OPENINGS SHALL BE MEASURED ON-SITE AFTER INSTALLATION OF DRYWALL FOR THE CORRECT DIMENSIONS OF SHADES.

SIGNAGE SCHEDULE					
ROOM NO.	ROOM NAME	SIGN TYPE	SIGNAGE	COLOR	NOTES
101	ELEVATOR MACHINE ROOM	A	ELEV. MACHINE ROOM	MATCH EXIST.	
202	FISCAL OFFICE	B	FISCAL OFFICE	MATCH EXIST.	
203	FISCAL DEPT.	A	FISCLA DEPT.	MATCH EXIST.	
204	ELECTRICAL ROOM	A	ELEC.	MATCH EXIST.	
205	STORAGE	A	STORAGE	MATCH EXIST.	
206	FISCAL OFFICE	B	FISCAL OFFICE	MATCH EXIST.	
208	RESTROOM	C	RESTROOM	MATCH EXIST.	
209	RESTROOM	C	RESTROOM	MATCH EXIST.	
210	CONFERENCE A	A	CONF. A	MATCH EXIST.	
211	HBPC OFFICE	B	HBPC OFFICE	MATCH EXIST.	
212	HBPC	A	HBPC	MATCH EXIST.	
213	ELECTRICAL	A	ELEC.	MATCH EXIST.	
214	STORAGE	A	STORAGE	MATCH EXIST.	
216	CPAC	A	CPAC	MATCH EXIST.	
219	VISIN OFFICE	B	VISIN OFFICE	MATCH EXIST.	
220	CPAC OFFICE	B	CPAC OFFICE	MATCH EXIST.	
221	RESTROOM	C	RESTROOM	MATCH EXIST.	
222	RESTROOM	C	RESTROOM	MATCH EXIST.	
223	RESTROOM	C	RESTROOM	MATCH EXIST.	
225	FILE STORAGE	A	FILE STORAGE	MATCH EXIST.	
226	HAS	A	HAS	MATCH EXIST.	
227	STORAGE	A	STORAGE	MATCH EXIST.	
228	COPY CENTER	A	COPY CENTER	MATCH EXIST.	
229	HAS OFFICE	B	HAS OFFICE	MATCH EXIST.	
230	HAS OFFICE	B	HAS OFFICE	MATCH EXIST.	
231	HAS OFFICE	B	HAS OFFICE	MATCH EXIST.	
232	HIMS	A	HIMS	MATCH EXIST.	
233	STAMP ROOM	A	STAMP ROOM	MATCH EXIST.	
234	HIMS OFFICE	B	HIMS OFFICE	MATCH EXIST.	
235	SECRETARY	B	SECRETARY	MATCH EXIST.	
236	HIMS FILE ROOM	A	HIMS FILE ROOM	MATCH EXIST.	
237	RESTROOM	C	RESTROOM	MATCH EXIST.	
238	RESTROOM	C	RESTROOM	MATCH EXIST.	
239	RESTROOM	C	RESTROOM	MATCH EXIST.	
241	JAN	A	JAN.	MATCH EXIST.	
242	TELCOM	A	TELCOM	MATCH EXIST.	
243	CONFERENCE B	A	CONF. B	MATCH EXIST.	
244	CONFERENCE C	A	CONF. C	MATCH EXIST.	
245	CONFERENCE D	A	CONF. D	MATCH EXIST.	
246	BREAKROOM	A	BREAKROOM	MATCH EXIST.	
247	JAN	A	JAN.	MATCH EXIST.	
C116-2	STORAGE				
EL1	ELEVATORS	N/A	N/A	N/A	
ST1	STAIR 1	D	STAIR 1	MATCH EXIST.	
ST2	STAIR 2	D	STAIR 2	MATCH EXIST.	



KEY PLAN

100% CONSTRUCTION BID DOCUMENT DELLC JOB No. 140701D
SUBMISSION - FULLY SPRINKLERED

Additional:

Date

Revisions:

AMENDMENT 1

5/9/16

Consultants:

BURDETTE KOEHLER MURPHY & ASSOCIATES, INC.

MECHANICAL / ELECTRICAL CONSULTING ENGINEERING
1416 CLARKVIEW ROAD
BALTIMORE, MARYLAND 21209
410.323.0600 - FAX 410.317.2543

RICKERT ENGINEERING, INC.

STRUCTURAL ENGINEERING
8813 WALTHAM WOODS ROAD, SUITE 500
BALTIMORE, MARYLAND 21234
410.663.5110 - FAX 410.663.5114

BUILDING COST CONSULTANTS

COST ESTIMATING
12917 - 30TH AVENUE
PLATTSMOUTH, NEBRASKA 68048
402.298.8260 - FAX 402.298.8290

KOFFEL ASSOCIATES, INC.

FIRE PROTECTION ENGINEERING
8815 CENTRE PARK DR., SUITE 200
COLUMBIA, MARYLAND 21045
410.750.2246 - FAX 410.750.2588

WHITMAN, REQUARDT & ASSOCIATES, LLP

CIVIL ENGINEERING
891 South Caroline Street
Baltimore, MD 21231
410.235.3450 - FAX: 410.243.5716

ROBERT L. SEYMOUR ASSOCIATES

AUTOMATIC TRANSPORT ENGINEERING
162 THOMAS JOHNSON DR. SUITE 200
FREDERICK, MARYLAND 21702
301.662.8112 - FAX 301.662.8117

DERBY de enterprises

ARCHITECTURE PLANNING ENGINEERING

2215 Conowingo Rd, Suite 100
Bel Air, Maryland 21015-1436
410.803.0009
fax 410.836.6811

JAMES E. VAN ZANDT

VETERANS ADMINISTRATION

MEDICAL CENTER

Drawing Title

FINISH SCHEDULE & LEGENDS

Approved: Associate Director for Operations:

Approved: Director, Medical Center:

Project Title

EXPAND OUTPATIENT WITH SECOND FLOOR ADDITION

Building No:

Checked: CPJ/CAJ

Drawn: JSK/BKP/DEK

Location:

Date

10/ 30/ 15

Project No.

503-308

Drawing No.

1101

Dwg. 35 Of 112

DEPARTMENT OF VETERANS AFFAIRS