

SYMBOL	DESCRIPTION
	WSF-1, WOOD LOOK WELDED SHEET FLOORING
	WSF-2, HOMOGENOUS WELDED SHEET FLOORING
	WSF-3, HOMOGENOUS WELDED SHEET FLOORING
	WSF-4, HOMOGENOUS WELDED SHEET FLOORING
	PT-1, PORCELAIN TILE
	SDS-1, STATIC DISSIPATIVE SHEET PRODUCT

BUILDING 143

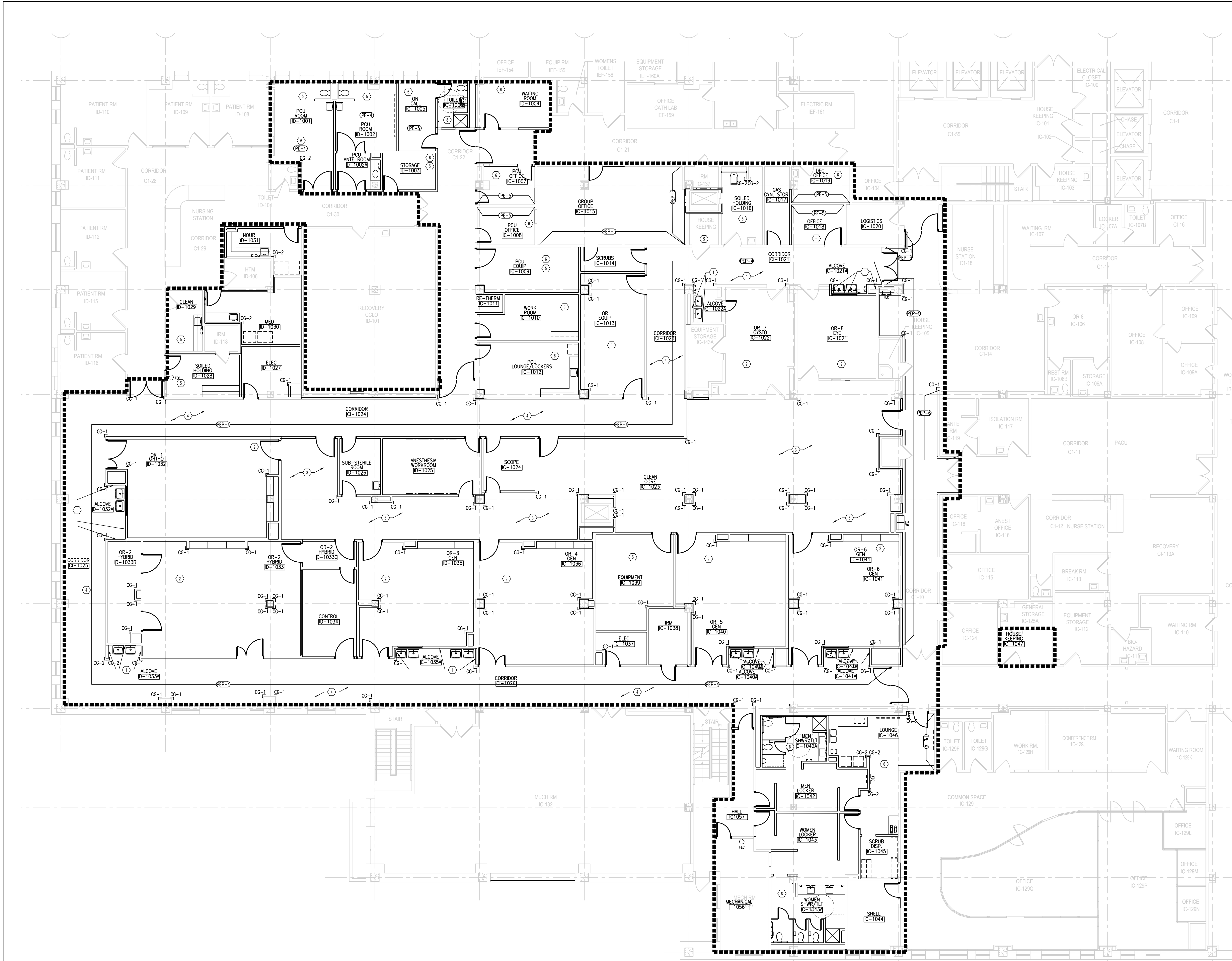
PROJECT NORTH

TRUE NORTH

FIRST FLOOR - NTS

[illegible]

Veterans Affairs



**WP-1**

- WALL FINISH AS SCHEDULED
- KORAGARD JC12 ANODIZED ALUMINUM TRIM
- HAND RAIL (CR-1)
- COLOR COORDINATING CAULK AT VERTICAL SEAM
- HIGH IMPACT PANEL (HIP-2)
- CRASH RAIL (CR-1)
- HIGH IMPACT PANEL (HIP-2)
- BASE AS SCHEDULED

NOTE: WHERE WP-1 IS SCHEDULED AT WALL SECTIONS LESS THAN 10" WIDTH, PROVIDE (HIP-2) ONLY. CONTINUE (HIP-2) BEHIND DOORS.

**WP-2**

- WALL FINISH AS SCHEDULED
- KORAGARD JC12 ANODIZED ALUMINUM TRIM
- HIGH IMPACT PANEL (HIP-2)
- COLOR COORDINATING CAULK AT VERTICAL SEAMS
- BASE AS SCHEDULED

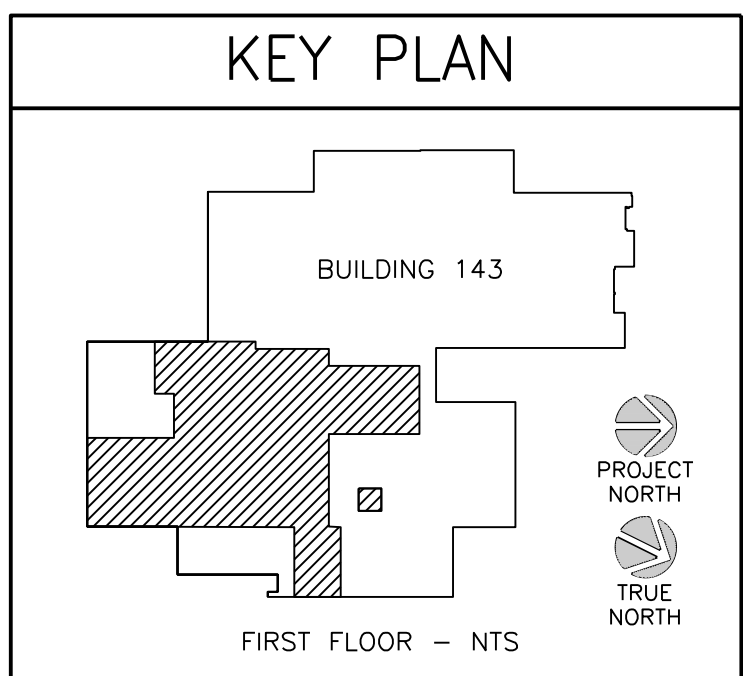
**WP-3**

- WALL FINISH AS SCHEDULED
- COLOR COORDINATING TOP CAP
- HIGH IMPACT PANEL (HIP-1)
- COLOR COORDINATING CAULK AT VERTICAL SEAMS
- BASE AS SCHEDULED

**WP-4**

- WALL FINISH AS SCHEDULED
- COLOR COORDINATING TOP CAP
- CRASH RAIL (CR-1)
- COLOR COORDINATING CAULK AT VERTICAL SEAM
- HIGH IMPACT PANEL (HIP-1)
- CRASH RAIL (CR-1)
- HIGH IMPACT PANEL (HIP-1)
- BASE AS SCHEDULED


NOTE: WHERE WP-1 IS SCHEDULED AT WALL SECTIONS LESS THAN 10" WIDTH, PROVIDE (HIP-1) ONLY. CONTINUE (HIP-1) BEHIND DOORS.

[illegible]

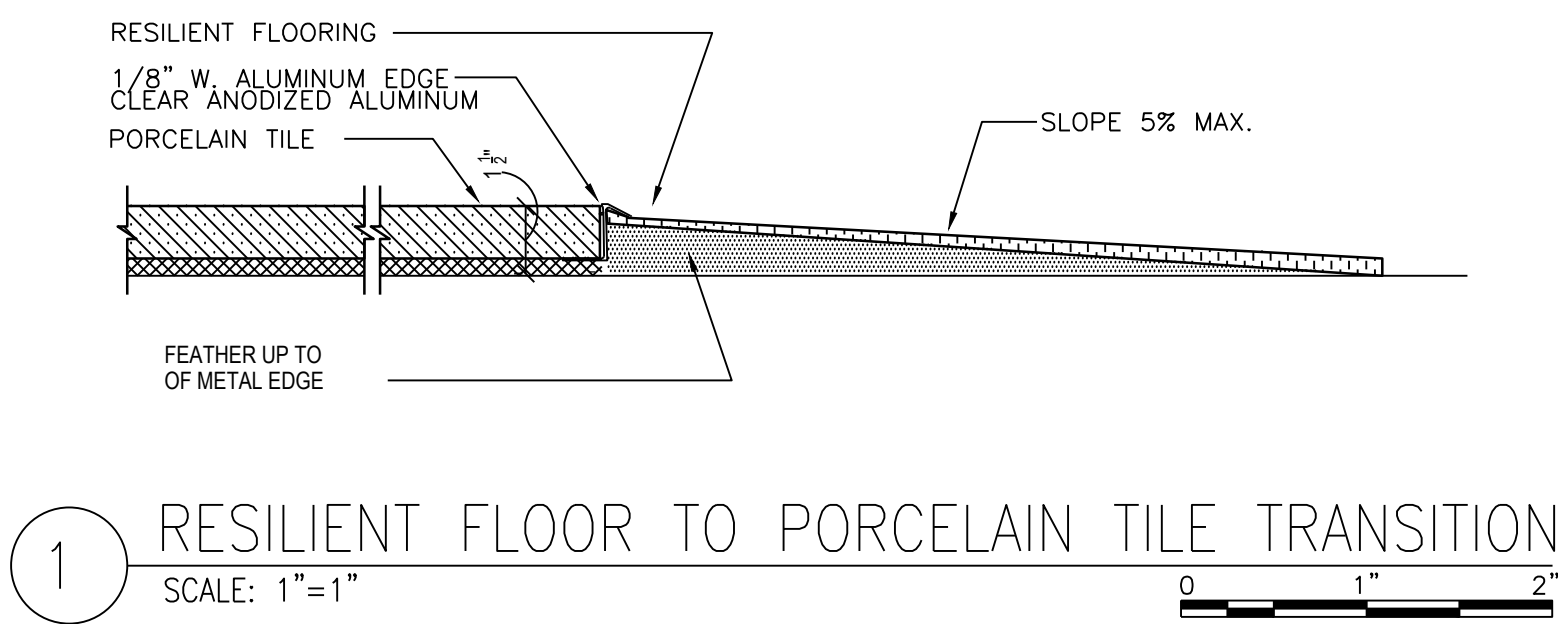
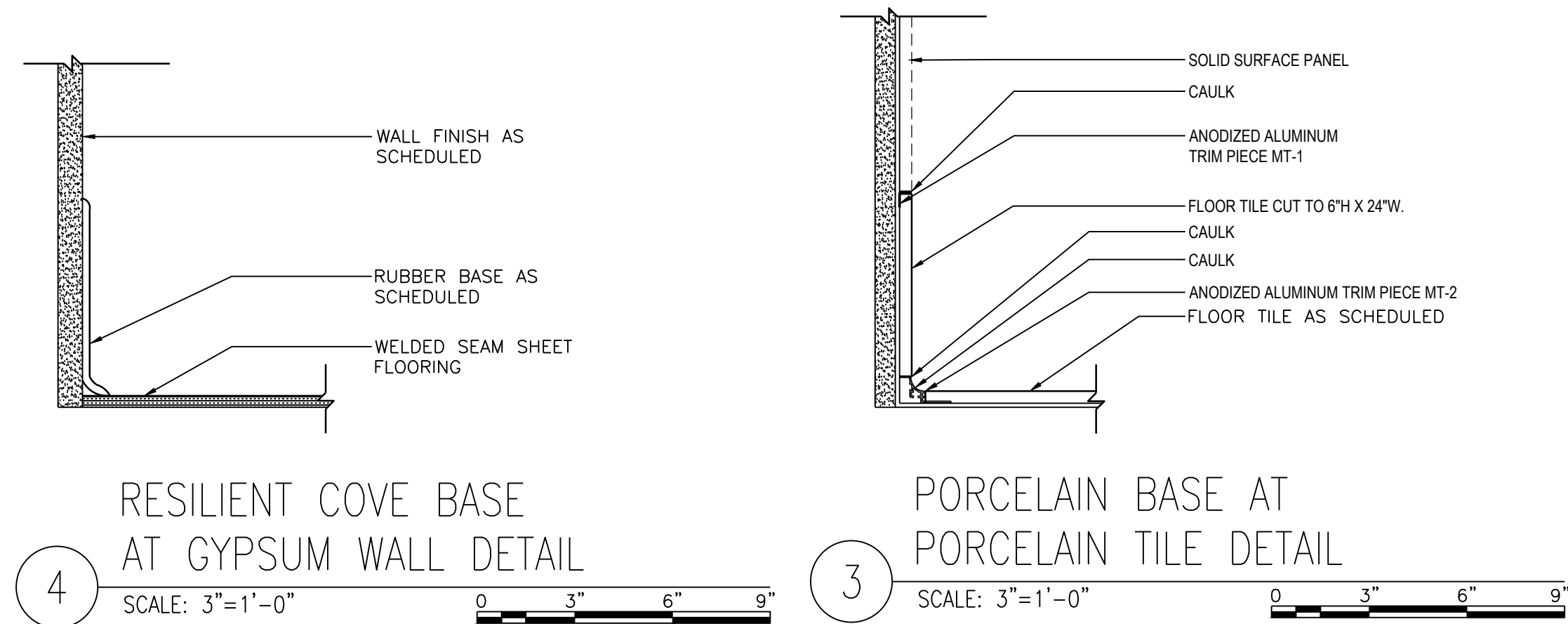
Veterans  
Affairs

e-eight inch = one foot

1 4 8 16



GENERAL FINISH NOTES	
A.	REFER TO PROJECT MANUAL FOR FINISH SCHEDULE AND SPECIFICATION.
B.	REFER TO SHEET AE605 FOR EQUIPMENT LIST.
C.	UNLESS NOTED OTHERWISE ALL HORIZONTAL SURFACES SHALL RECEIVE SOLID SURFACE MATERIAL (S-1). PROVIDE 4" H. BACK AND SIDE SPLASH AT ALL WET LOCATIONS.
D.	U.N.O. ALL COUNTERTOP SINKS SHALL BE INTEGRAL BOWLS.
E.	U.N.O. ALL SOLID SURFACE COUNTERTOPS SHALL HAVE A $\frac{1}{4}$ " RADIUS EDGE DETAIL.
F.	CONTINUE SCHEDULED FLOORING MATERIAL INTO ALL RECESSES.
G.	UNLESS NOTED OTHERWISE CONTINUE SCHEDULED BASE MATERIAL OVER BUILT-IN CASEWORK.
H.	U.N.O. ALL WALLS SHALL BE PAINTED (P-1) IN EPOXY FINISH.
I.	ALL HOLLOW METAL FRAMES SHALL BE PAINTED (P-2) IN SEMI GLOSS FINISH.
J.	IN AREAS OUTSIDE THE PROJECT SCOPE WHERE EXISTING FINISHES WILL BE AFFECTED, CONTRACTOR SHALL PATCH FINISHES WITH MATCHING MATERIALS. CONSULT OWNER INTERIOR DESIGN TEAM PRIOR TO DEMOLITION. SEE DEMOLITION PLAN FOR AFFECTED AREAS.
K.	CONTRACTOR SHALL INSTALL SHOWER ROD AT ALL SHOWER LOCATIONS. REFER TO RCP FOR MORE DETAILS.
L.	U.N.O. RECESSED WIREWAYS, ACCESS PANELS, GRILLES, ELECTRICAL PANELS, AND ALL OTHER SUCH ARCHITECTURAL, ELECTRICAL AND MECHANICAL DEVICES SHALL BE FINISHES TO MATCH ADJACENT WALL OR CEILING SURFACE
M.	U.N.O. ALL EXTERIOR CORNERS SHALL RECEIVE CORNED GUARD (CG-1) INSTALLED FROM TOP OF SCHEDULE BASE TO 7'-2" ABOVE FLOOR FINISH.
N.	ALL PCU PATIENTS ROOMS SHALL RECEIVE CURBIE CURTAIN TO MATCH ADJACENT ROOMS. COORDINATE WITH VA INTERIOR DESIGNER.
O.	REFER TO INTERIOR ELEVATIONS AND INTERIOR SPECIFICATIONS FOR ALL MILLWORK FINISH DESIGNATIONS.
P.	GC TO SUPPLY ALL SIGNAGE. REFER TO SIGNAGE SHEET FOR ADDITIONAL INFORMATION.
Q.	TRANSITION ALL THE FLOORING AT DOOR CENTER.

[illegible]