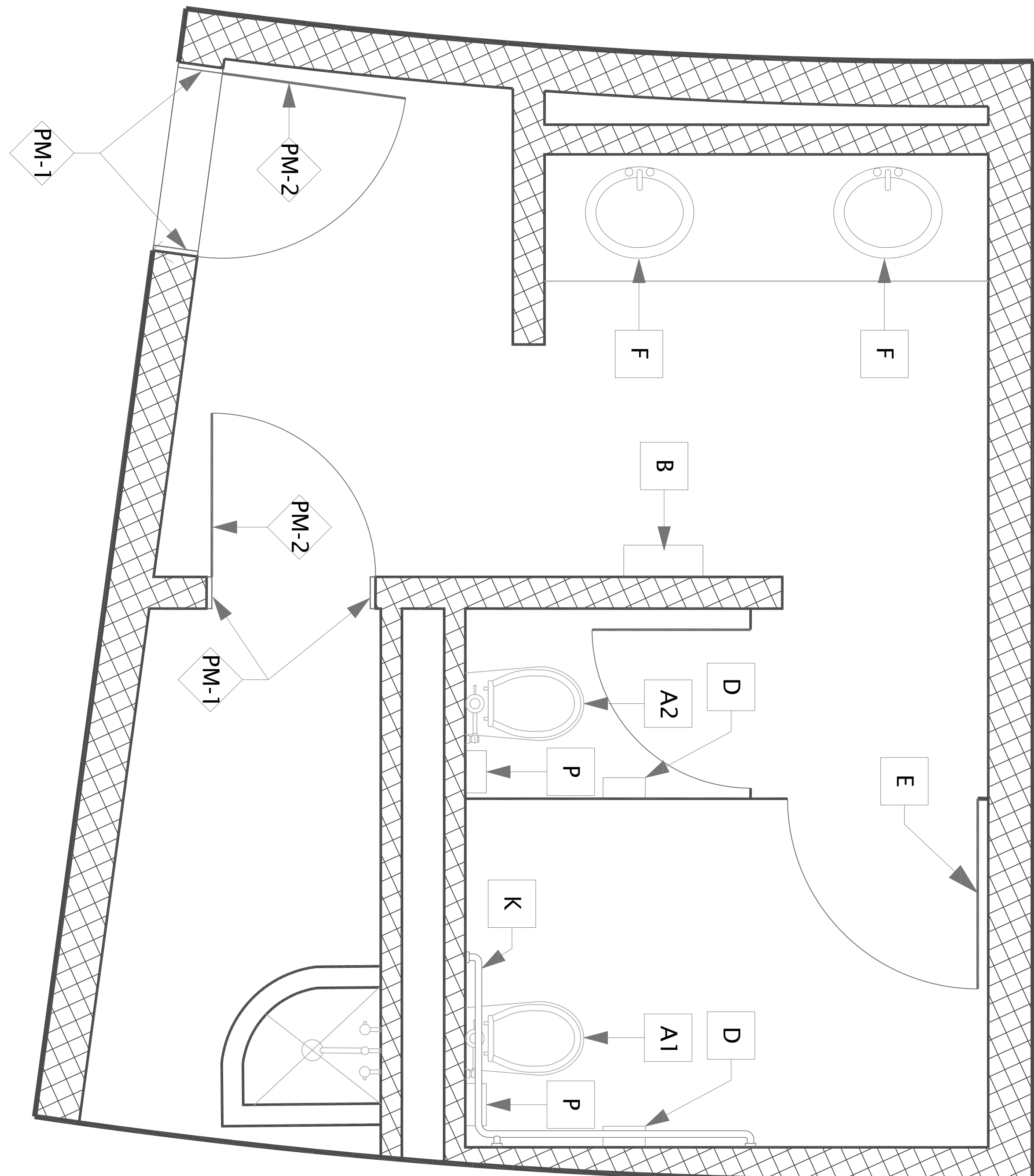


**MEN'S RESTROOM**



WOMEN'S RESTROOM

# 1 FINISH PLAN

SCALE:  $\frac{1}{2}" = 1'-0"$

## ROOM FINISH GENERAL NOTES

1. PIP-6 MOSAICS TO BE CUT AND INSTALLED AS SHOWN IN 1401-A502 ELEVATIONS
2. PPM-1 TO BE USED FOR HOLLOW METAL DOOR FRAMES
3. ALL PIP TO BE INSTALLED WITH GR-1
4. RESTROOM VANITY REMOVABLE PANELED TO BE PL-2
5. ALL TOILET PARTITIONS TO BE TP-1
6. REFERENCE TO MANUFACTURERS AND PRODUCT NUMBERS IS TO ESTABLISH COLOR AND PATTERNS REQUIRED ONLY

ROOM FINISH AND COLOR SCHEDULE							
SPACE					CEILING		REMARKS BY NUMBER
NUMBER	ROOM NAME	FLOOR	BASE	WALL	MAT'L	HEIGHT	
MENS		VC1-1	PT-5	PT-4, PT-5, PT-6	P-1	8'-0"	1-2
MENS JANITOR		VC1-1	PT-4	PT-5	P-1	8'-0"	2
WOMENS		VC1-1	PT-5	PT-4, PT-5, PT-6	P-1	8'-0"	1,2
WOMENS JANITOR		VC1-1	PT-4	PT-4	P-1	8'-0"	2

## ROOM FINISH LEGEND

GR	GROUT
1	MAPEL: 1/8" SANDED GROUT: 94 STRAW
P	GYPSUM BOARD: REPAINT
1	BENJAMIN MOORE: EGGSHELL, 00C-31 FOG MIST

#### ROOM FINISH REMARKS BY NUMBER

- 1 COUNTER TOPS TO BE 'SS-3  
2 METAL DOORS TO BE 'PM-2


PL'	PLASTIC LAMINATE	
2	WILSONART: 4841-60 DESERT ZEPHYR	
PM'	PAINTED METAL	
1	BENJAMIN MOORS: SEMI-GLOSS, 1477 DEEP CREEK	
2	BENJAMIN MOORE: SEMI-GLOSS, 986	

PT	PORCELAIN TILE
4	12" x 24" REFIN CERAMIC: STONE-LEADER, BEIGE, RN1000
5	12" x 24" REFIN CERAMIC: STONE-LEADER, BROWN, RN1001
6	6" x 12" REFIN CERAMIC: STONE-LEADER MOSAIC, BEIGE, RN1500
SS	SOLID SURFACE
3	DUPONT CORIAN, CAMEL (F)
TP	TOILET PARTITIONS
	STAINLESS STEEL, FLOOR MOUNTED WITH OVERHEAD BRACING
VCT	VINYL COMPOSITION TILE
1	ARMSTRONG, RAIFA, 5580S COCOA

## ROOM FINISH LEGEND

PT	PORCELAIN TILE
4	12" x 24" REFIN CERAMIC: STONE-LEADER, BEIGE, RN1000
5	12" x 24" REFIN CERAMIC: STONE-LEADER, BROWN, RN1001
6	6" x 12" REFIN CERAMIC: STONE-LEADER MOSAIC, BEIGE, RN1500
SS	SOLID SURFACE
3	DUPONT CORIAN, CAMEL (F)
TP	TOILET PARTITIONS
	STAINLESS STEEL, FLOOR MOUNTED WITH OVERHEAD BRACING
VCT	VINYL COMPOSITION TILE
1	ARMSTRONG, RAIFA, 5580S COCOA

Revisions	Date
1. UPDATED ROOM FINISH AND COLOR SCHEDULE FOR WALL TILE.	06MAY16



NATIONAL  
CEMETERY  
ADMINISTRATION

Drawing Title  
**FINISH PLAN**

Approved: Division Chief

Approved: Service Director

Project Title	<b>RENOV. HEMICYCLE RESTROOMS</b>		
Building Number	*****	Checked	Drawn CFC
Location	<b>HOUSTON NATIONAL CEMETERY</b>		

Date	03/14/2016
Project No.	851-16-201
DRAWING NO.	<b>A-102</b>
Dwg. 3 Of 4	