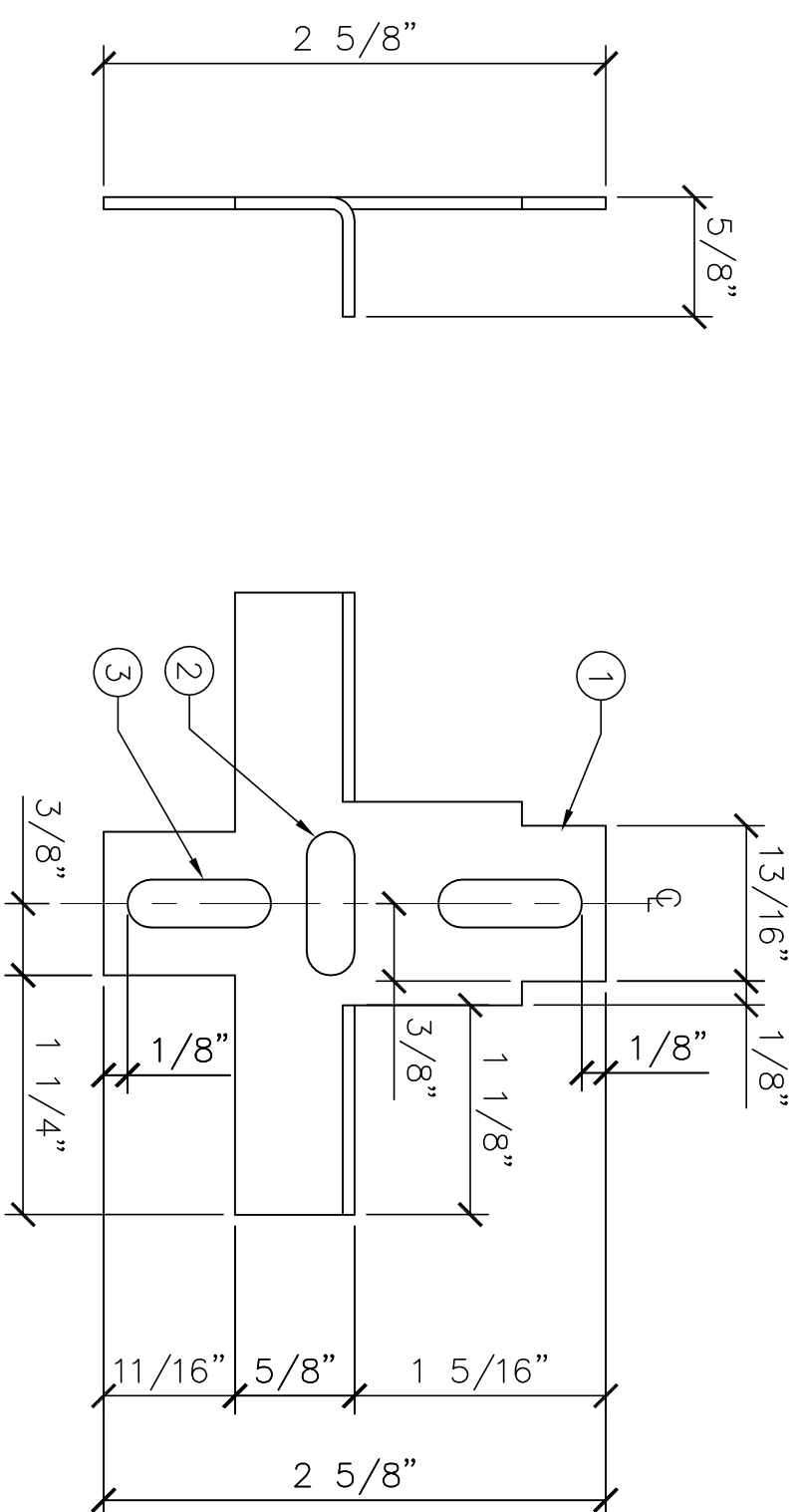
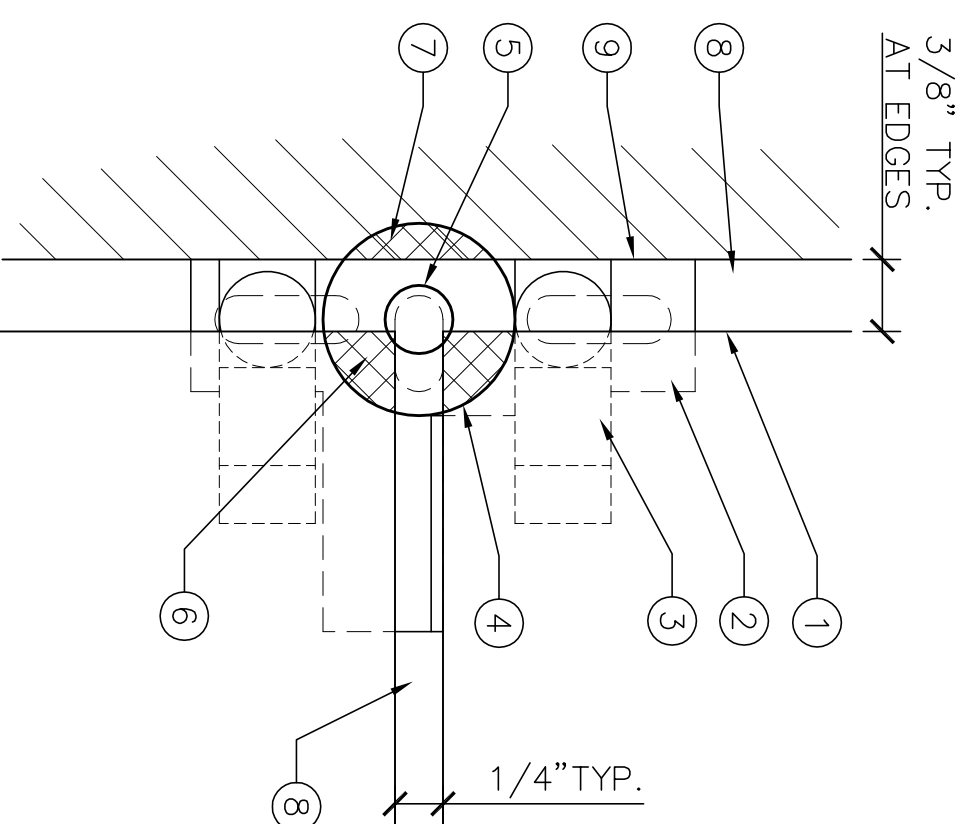
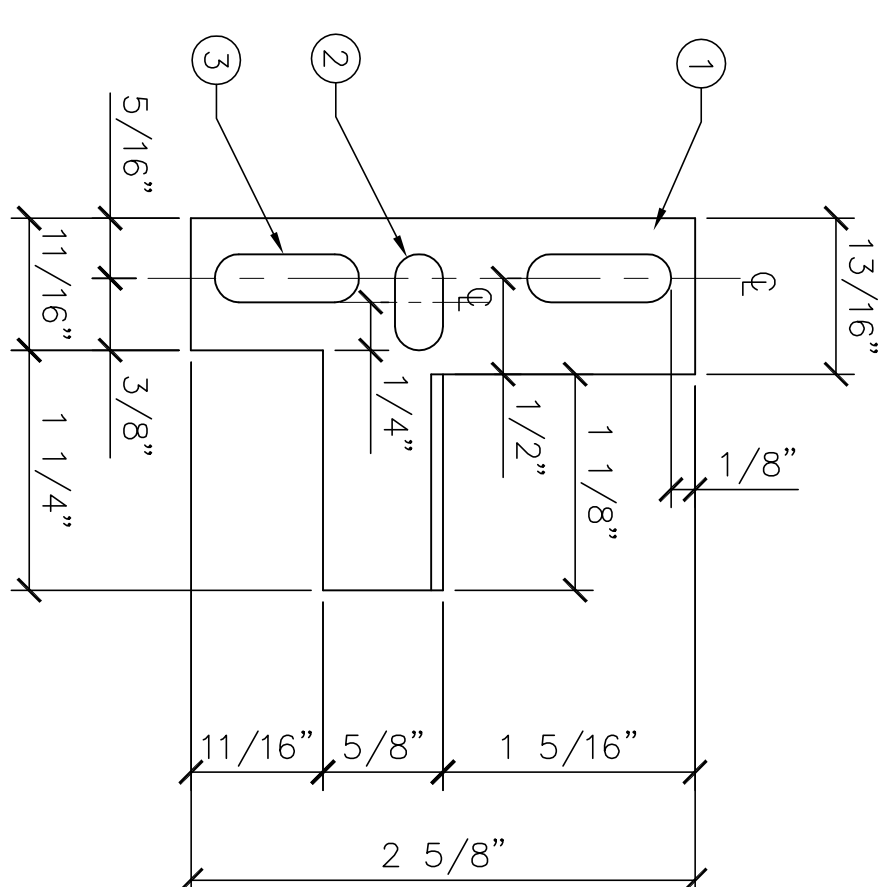


ELEVATION



SIDE VIEW

ELEVATION

ELEVATION

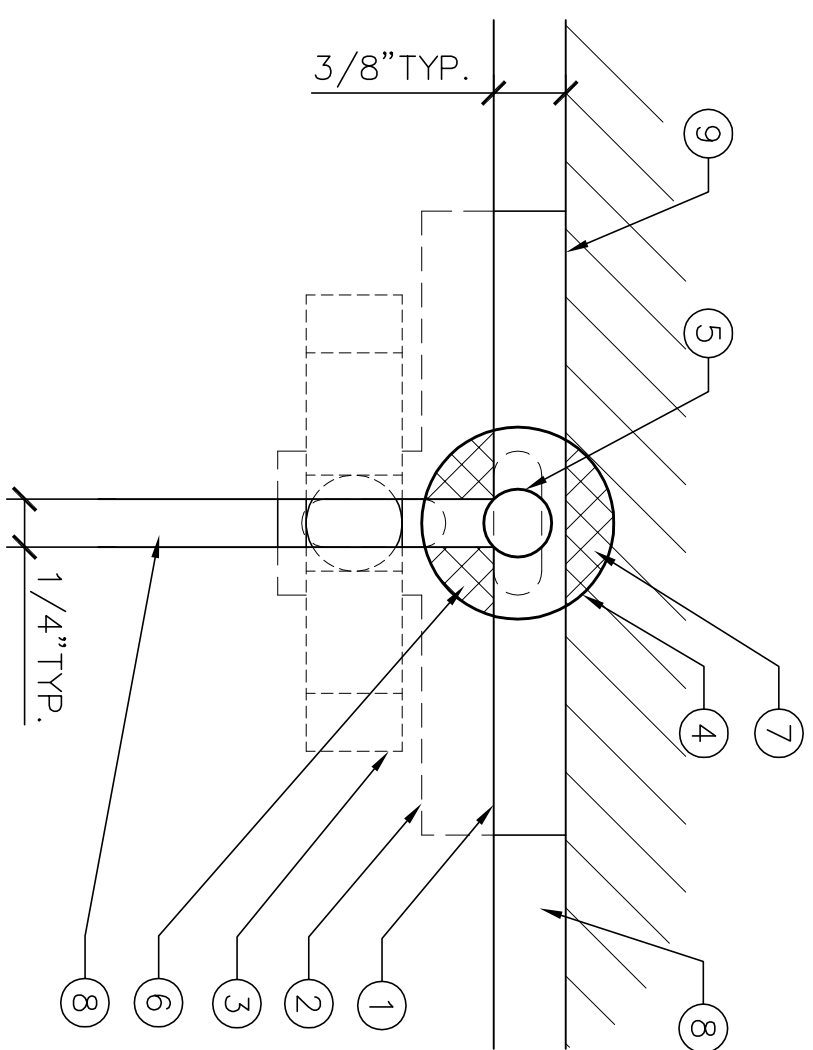
- ① EDGE OF MARBLE MEMORIAL WALL MARKER.
- ② 16 GAUGE, TYPE 302 STAINLESS STEEL ROSETTE PLATE, SEE DETAIL 2/1-1.
- ③ 2-3/4" X 1/2" STAINLESS STEEL SPRING PLATE WITH TAMPER-PROOF SCREWS.
- ④ 1" DIA. STAINLESS STEEL ROSETTE WITH NEOPRENE WASHER, ROSETTES TO MATCH ROSETTES AT COLUMBARIUM UNITS ON NEIGHBORING SITE.
- ⑤ STAINLESS STEEL CENTER POST TO RECEIVE TAMPER-PROOF ROSETTE PIN.
- ⑥ OVERLAP BETWEEN ROSETTE AND MARBLE MARKER.
- ⑦ RECESSED PORTION OF CONCRETE WALL.

NOTE:
CONTRACTOR TO SUBMIT SHOP DRAWINGS FOR APPROVAL PRIOR TO ORDERING
AND MANUFACTURING OF PRODUCT.

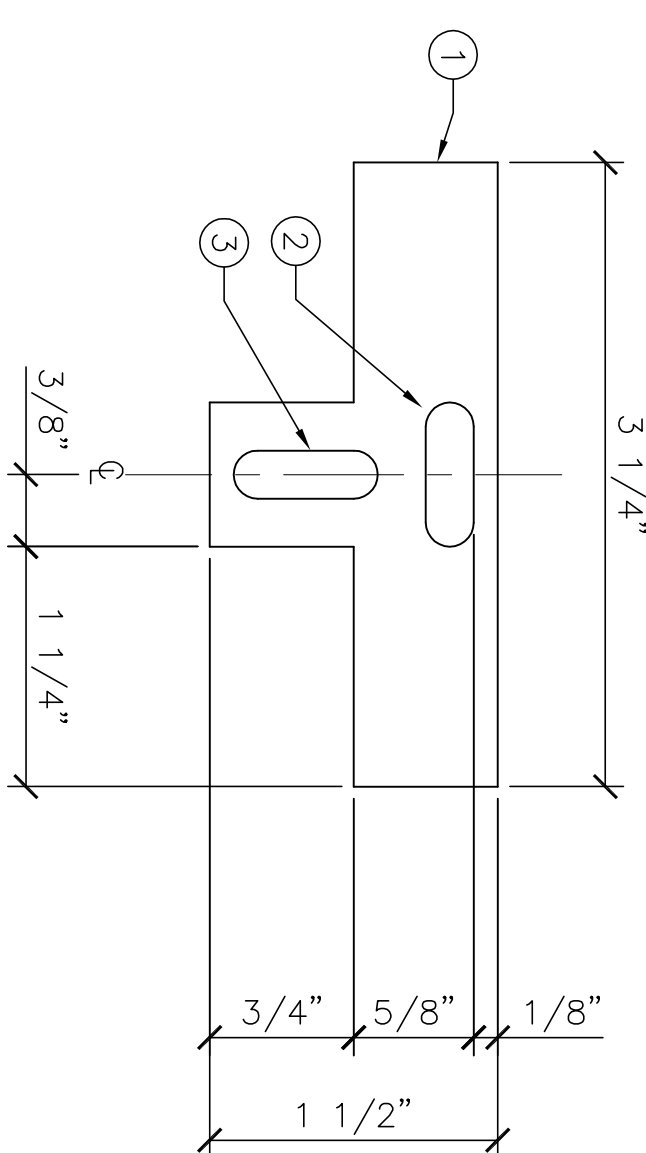
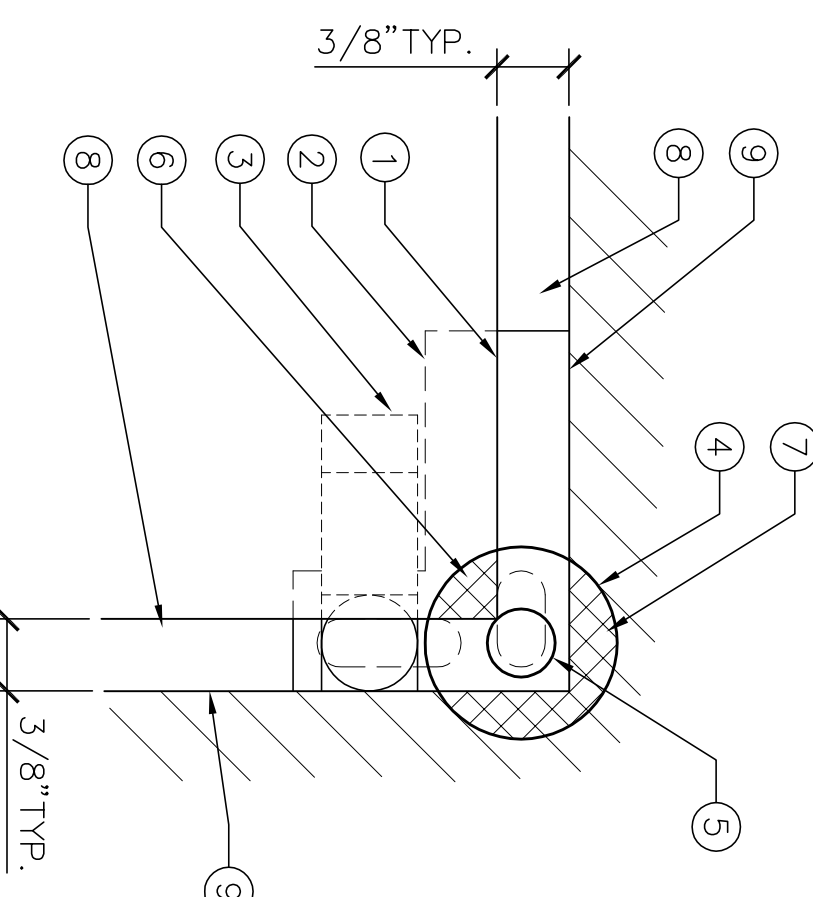
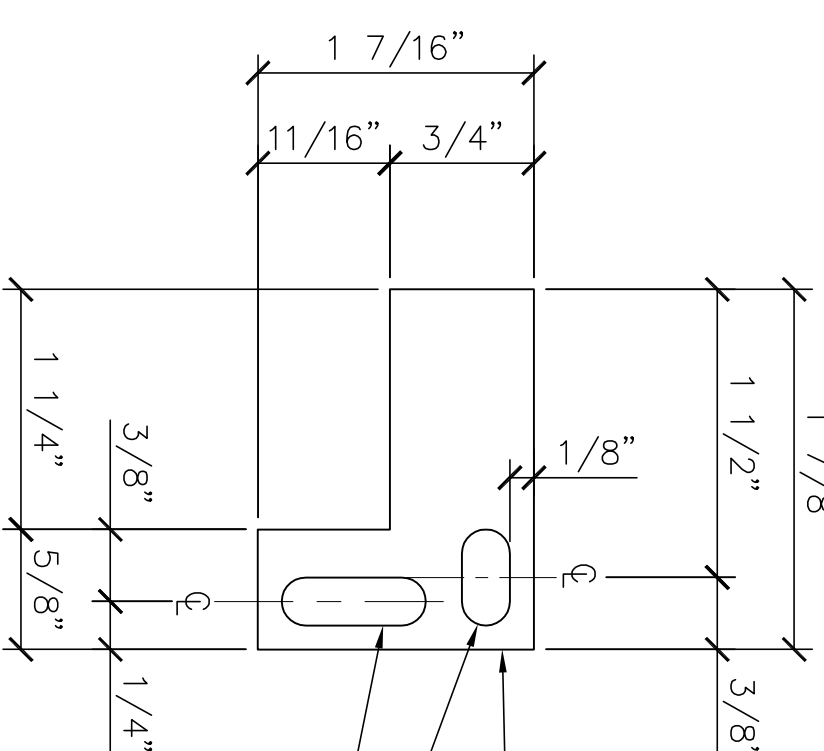
- ① 11-1/4" x 1-3 3/4" x 3/4" MARBLE MEMORIAL WALL MARKER.
- ② 16 GAUGE, TYPE 302 STAINLESS STEEL ROSETTE PLATE, SEE DETAIL 4/1-9.
- ③ 1-3/8" x 1/2" STAINLESS STEEL SPRING PLATE WITH TAMPER-PROOF SCREW.
- ④ 1" DIA STAINLESS STEEL ROSETTE WITH NEOPRENE WASHER, ROSETTES TO MATCH ROSETTES AT COLUMBIANUM UNITS ON NEIGHBORING SITE.
- ⑤ STAINLESS STEEL CENTER POST TO RECEIVE TAMPER-PROOF ROSETTE PIN.
- ⑥ OVERLAP BETWEEN ROSETTE AND MARBLE MARKER.
- ⑦ OVERLAP BETWEEN ROSETTE AND CONCRETE WALL.
- ⑧ RECESSED PORTION OF CONCRETE WALL.
- ⑨ FACE OF CONCRETE WALL.

NOTES:
CONTRACTOR TO SUBMIT SHOP DRAWINGS FOR APPROVAL PRIOR TO ORDERING
AND MANUFACTURING OF PRODUCT.
LEFT SIDE PLATE IS SHOWN, RIGHT SIDE EDGE IS A MIRROR IMAGE.

1 CENTER ROSETTE ATTACHMENT
AT MEMORIAL WALL UNIT



ELEVATION

ELEVATIONELEVATIONELEVATION

- ① EDGE OF MARBLE MEMORIAL WALL MARKER.
- ② 16 GAUGE, TYPE 302 STAINLESS STEEL ROSETTE PLATE, SEE DETAIL 6/A-1.
- ③ 2-3/4" x 1/2" STAINLESS STEEL SPRING PLATE WITH TAMPER-PROOF SCREWS.
- ④ 1" DIA. STAINLESS STEEL ROSETTE WITH NEOPRENE WASHER. ROSETTES TO MATCH ROSETTES AT COLUMBARIUM UNITS ON NEIGHBORING SITE.
- ⑤ STAINLESS STEEL CENTER POST TO RECEIVE TAMPER-PROOF ROSETTE PIN.
- ⑥ OVERLAP BETWEEN ROSETTE AND MARBLE MARKER.
- ⑦ OVERLAP BETWEEN ROSETTE AND CONCRETE WALL.
- ⑧ RECESSED PORTION OF CONCRETE WALL.
- ⑨ FACE OF CONCRETE WALL.

- ① 16 GAUGE, TYPE 302 STAINLESS STEEL, ROSETTE PLATE.
- ② 3/4" X 1/4" HORIZONTAL SLOT FOR STAINLESS STEEL CENTER POST SECURED WITH STAINLESS STEEL WASHER AND SCREW AT BACK TO RECEIVE TAMPER-PROOF ROSETTE PIN.
- ③ 3/4" X 1/4" VERTICAL SLOT FOR 1/4"DIA. TAMPER-PROOF SCREW TO SECURE STAINLESS STEEL SPRING PLATE WITH ROSETTE PLATE TO DROP-IN ANCHOR IN CONCRETE WALL.

- ① EDGE OF MARBLE MEMORIAL WALL MARKER.
- ② 16 GAUGE, TYPE 302 STAINLESS STEEL ROSETTE PLATE, SEE DETAIL 8/A-1.
- ③ 1-3/8" X 1/2" STAINLESS STEEL SPRING PLATE WITH TAMPER-PROOF SCREWS.
- ④ 1" DIA STAINLESS STEEL ROSETTE WITH NEOPRENE WASHER, ROSETTES TO MATCH ROSETTES AT COLUMBARIUM UNITS ON NEIGHBORING SITE.
- ⑤ STAINLESS STEEL CENTER POST TO RECEIVE TAMPER-PROOF ROSETTE PIN.
- ⑥ OVERLAP BETWEEN ROSETTE AND MARBLE MARKER.
- ⑦ OVERLAP BETWEEN ROSETTE AND CONCRETE WALL.
- ⑧ RECESSED PORTION OF CONCRETE WALL.
- ⑨ FACE OF CONCRETE WALL.

- ① 16 GAUGE, TYPE 302 STAINLESS STEEL ROSETTE PLATE.
- ② 1/2" X 1/4" HORIZONTAL SLOT FOR STAINLESS STEEL CENTER POST SECURED WITH STAINLESS STEEL WASHER AND SCREW AT BACK TO RECEIVE TAMPER-PROOF ROSETTE PIN.
- ③ 3/4" X 1/4" VERTICAL SLOT FOR 1/4"DIA. TAMPER-PROOF SCREW TO SECURE STAINLESS STEEL SPRING PLATE WITH ROSETTE PLATE TO DROP-IN ANCHOR IN CONCRETE WALL.

NOTES:
CONTRACTOR TO SUBMIT SHOP DRAWINGS FOR APPROVAL PRIOR TO ORDERING AND MANUFACTURING OF PRODUCT.
TOP RIGHT CORNER PLATE IS SHOWN, TOP LEFT CORNER PLATE IS A MIRROR IMAGE.

TOP EDGE ROSETTE ATTACHMENT
AT MEMORIAL WALL UNIT



ROSETTE ATTACHMENT
FOR TOP EDGE ROSE



TOP CORNER ROSETTE ATTACHMENT
7 AT MEMORIAL WALL UNIT




8 ROSETTE ATTACHMENT
FOR TOP CORNER RO

[illegible]

I HEREBY CERTIFY THAT THIS PLAN, SPECIFICATION, OR REPORT WAS
 PREPARED BY ME OR UNDER MY DIRECT SUPERVISION AND THAT I AM
 A DULY LICENSED ARCHITECT UNDER THE LAWS OF THE STATE OF
 MINNESOTA.

PRINT NAME: CHARLES I. SCOTT, M.A.

SIGNATURE: 

DATE MARCH 15, 2011 LICENSE # 18675

Anderson Engineering of Minnesota, LLC

13605 1st AVENUE NORTH, SUITE 100, PLYMOUTH, MN 55441
TEL (763) 412-4000 FAX (763) 412-4090
www.ae-mn.com



NATIONAL
CEMETERY
ADMINISTRATION

Drawing Title	Project Title			Date
ATTACHMENT DETAILS	FORT SNELLING NATIONAL CEMETERY MEMORIAL MARKER WALL			3-15-2011
Approved Director, Office of Construction Management	Building Number	Checked	Drawn	
Approved Director, Project Management Service	Location	7601 34th AVENUE, SOUTH MINNEAPOLIS, MINNESOTA		
		BROWING NO.		
		L-9		
		Project No.		
		Dep. 12 OF 20		

100% CONSTRUCTION DOCUMENTS