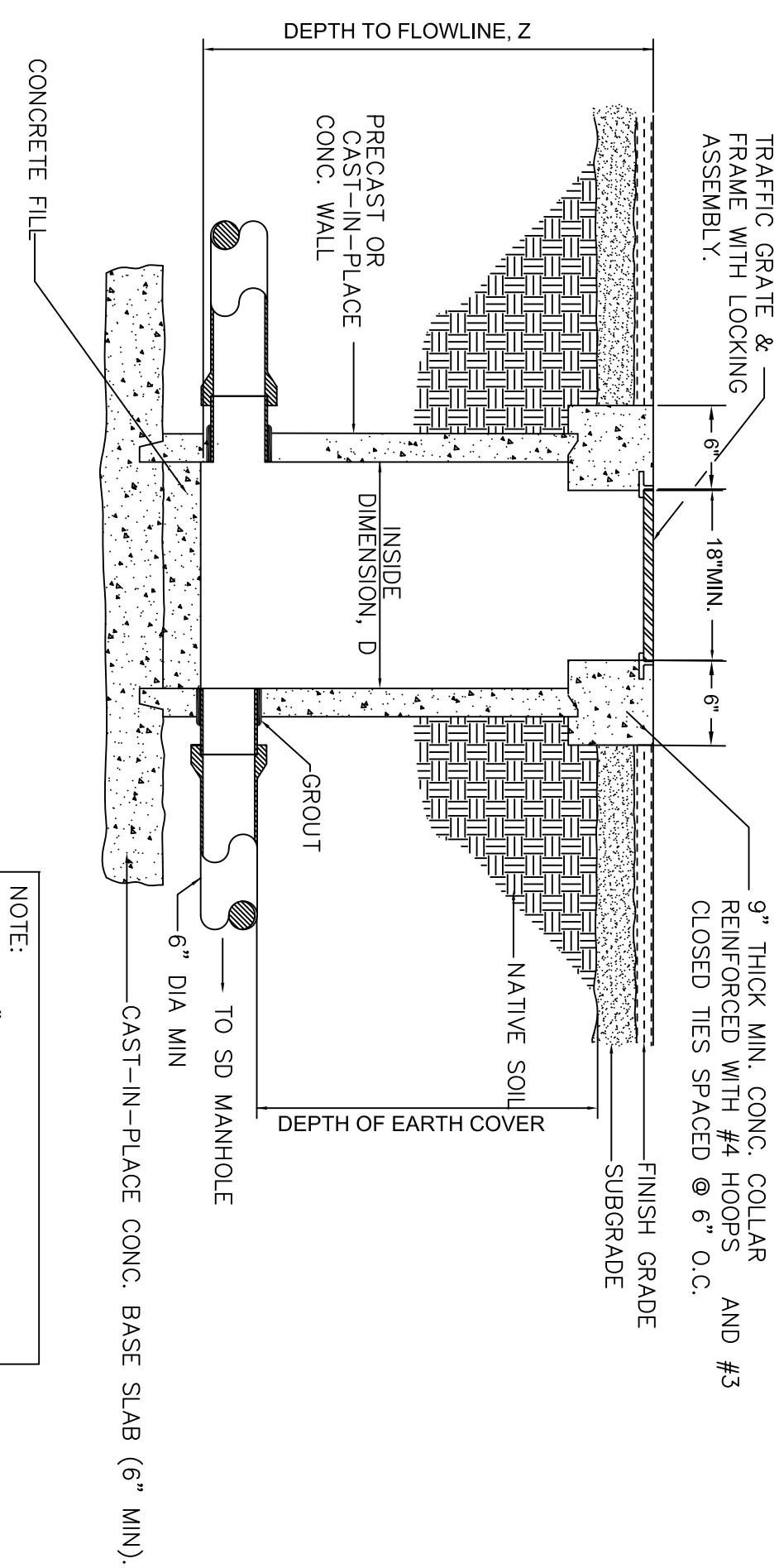


- NOTES:**
1. UNDERDRAIN: 4" DIAM. PERFORATED DUAL WALL HDPE PIPE – PLACE PIPE WITH PERFORATION SLOTS DOWN AND SLOPE PER DRAINAGE PLAN (MIN. 0.25%)
 2. MINIMUM COVER OVER IRRIGATION LINES SHALL BE 18".
 3. EXACT LOCATION OF PIPE IS TO BE FIELD VERIFIED AND PRE-APPROVED BY THE PROJECT ENGINEER AND COR.

1	IMPROVED SWALE W/ UNDERDRAIN DETAIL
C-201	(NTS)

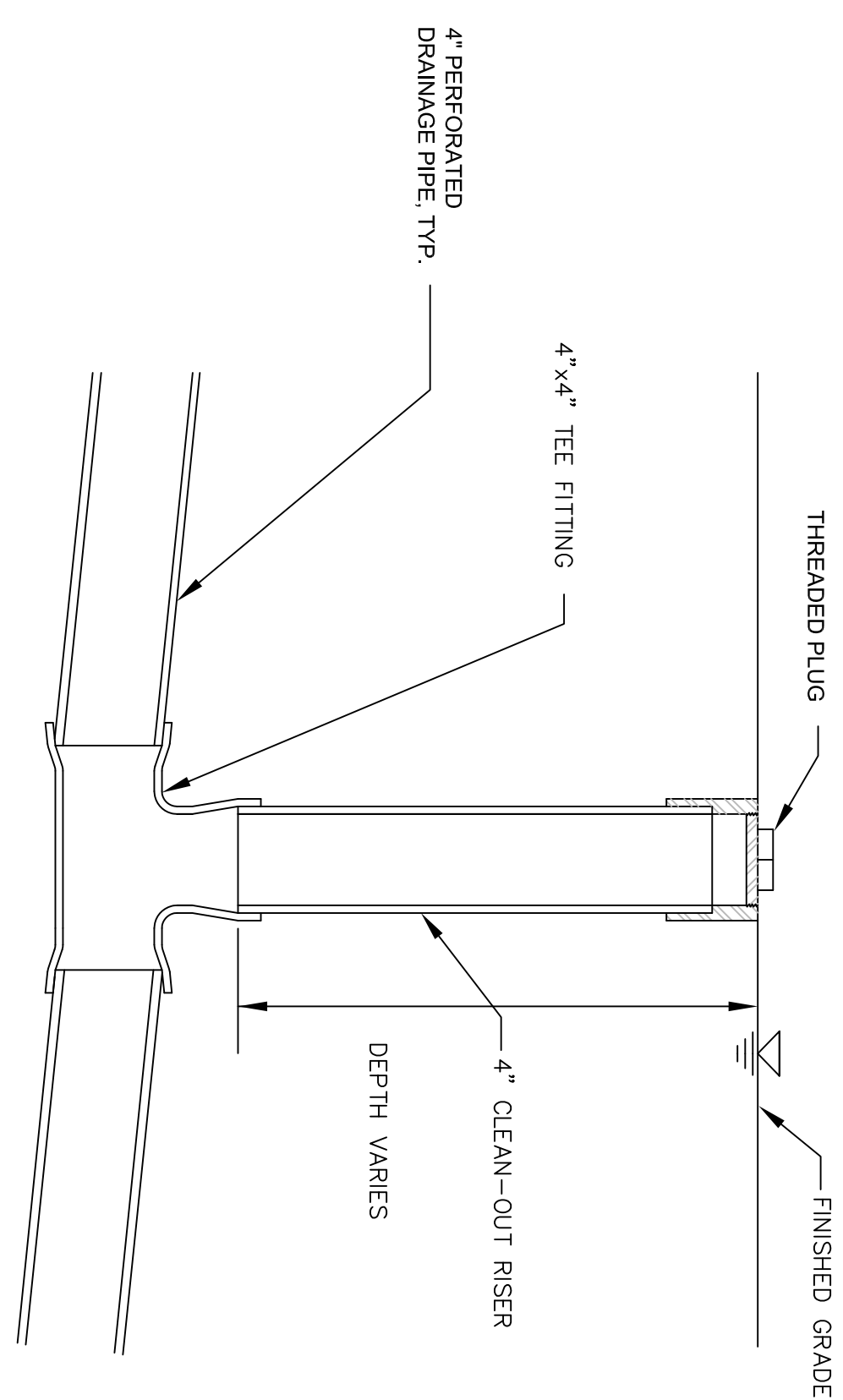
C-201 (NTS)



- NOTE:
1. MINIMUM WALL THICKNESS IS 6" FOR CAST-IN-PLACE CONC.
 2. REINFORCE CAST-IN-PLACE CONC. WALLS WITH #4 BARS AT 12" O.C. EACH WAY WITH 2" MIN COVER FROM INSIDE FACE.
 3. D IS 24" UNLESS OTHERWISE NOTED.

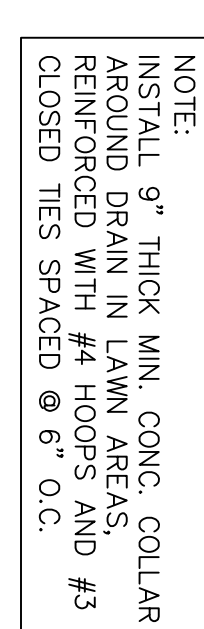
3	AREA DRAIN - LAWN AREA
C-201	(NTS)

C-201 (NIS)

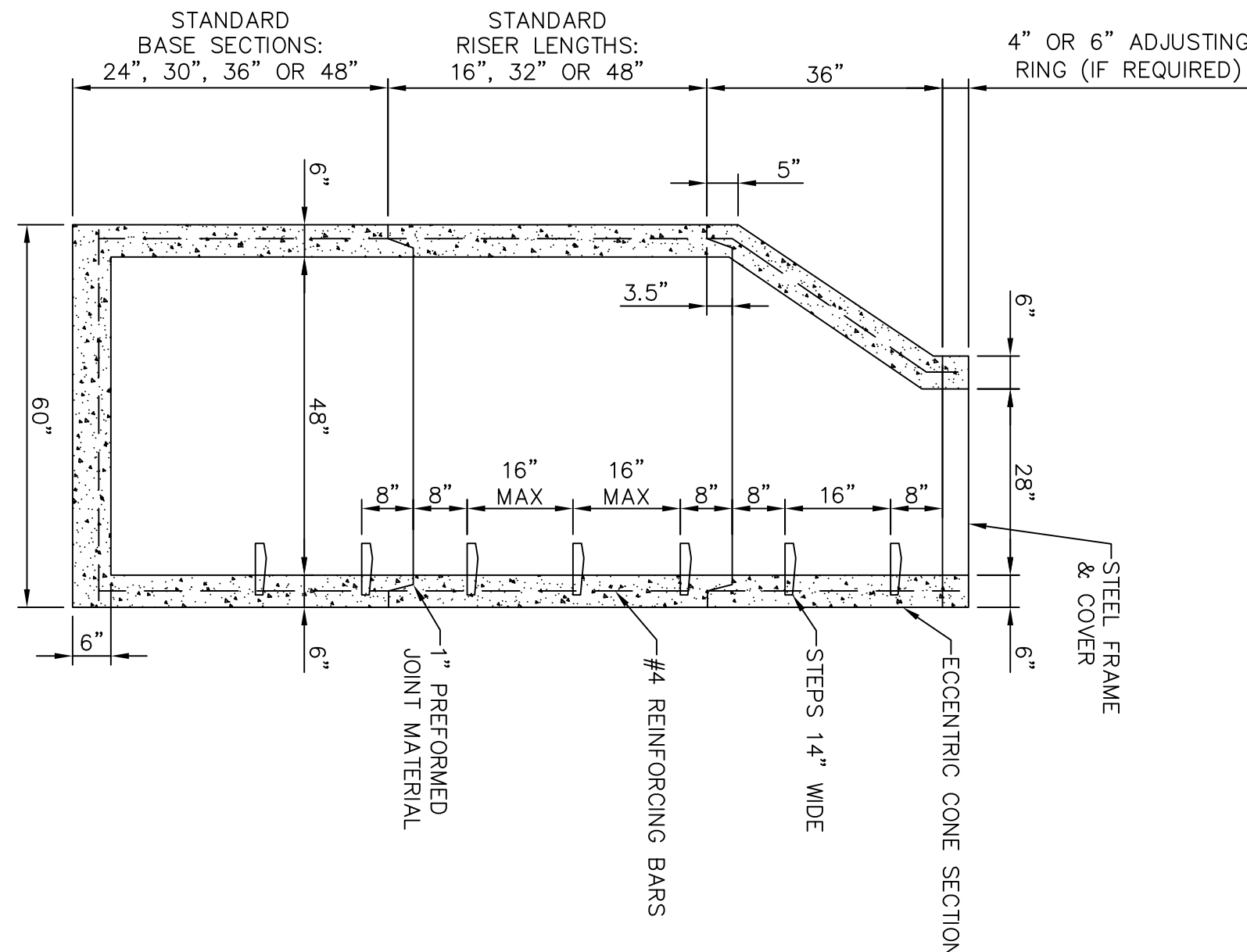


2	UNDERDRAIN CLEANOUT
C-201	(NTS)

C-201 (N15)

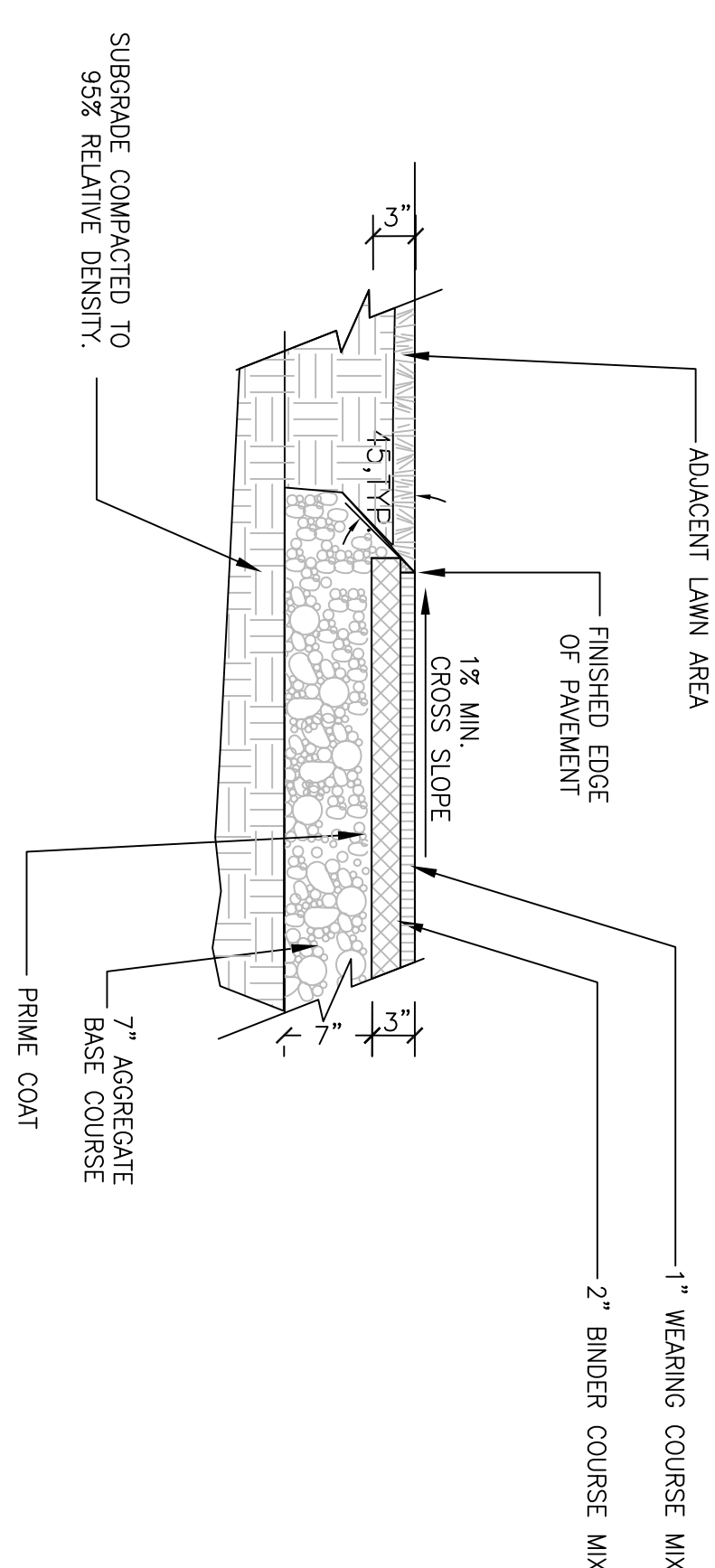


- NOTE:
1. WHEN CONSTRUCTING A NEW MANHOLE OVER EXISTING DRAIN PIPE, THE MANHOLE BASE SHALL BE CONSTRUCTED AROUND THE EXISTING DRAIN PIPE BEFORE CUTTING THE PIPE. PRECAST CONCRETE RISER WITH DOGHOUSE OPENINGS CAST IN THE LOWER END SHALL BE USED AS A BASE RISER AND FITTED OVER THE EXISTING PIPE.
 2. GROUT ALL PIPE CONNECTIONS TO MANHOLE.




4	48" PRECAST CONCRETE MANHOLE
C-201	(NTS)

C-201 (N13)



5	CURBLESS ROADWAY ASPHALT PAVEMENT @ LAWN
C-201	(NTS)

C-201 (N15)

Revisions	Date		 NATIONAL CEMETERY ADMINISTRATION	Drawing Title CONSTRUCTION DETAILS	Project Title REPAIR STORM DRAINAGE	Date 03/07/2016
				Approved: Division Chief	Building Number	Checked
		Approved: Service Director	Location BLOOMINGTON NATIONAL CEMETERY	DRAWING NO. C-201	Dwg. 5 Of 5	