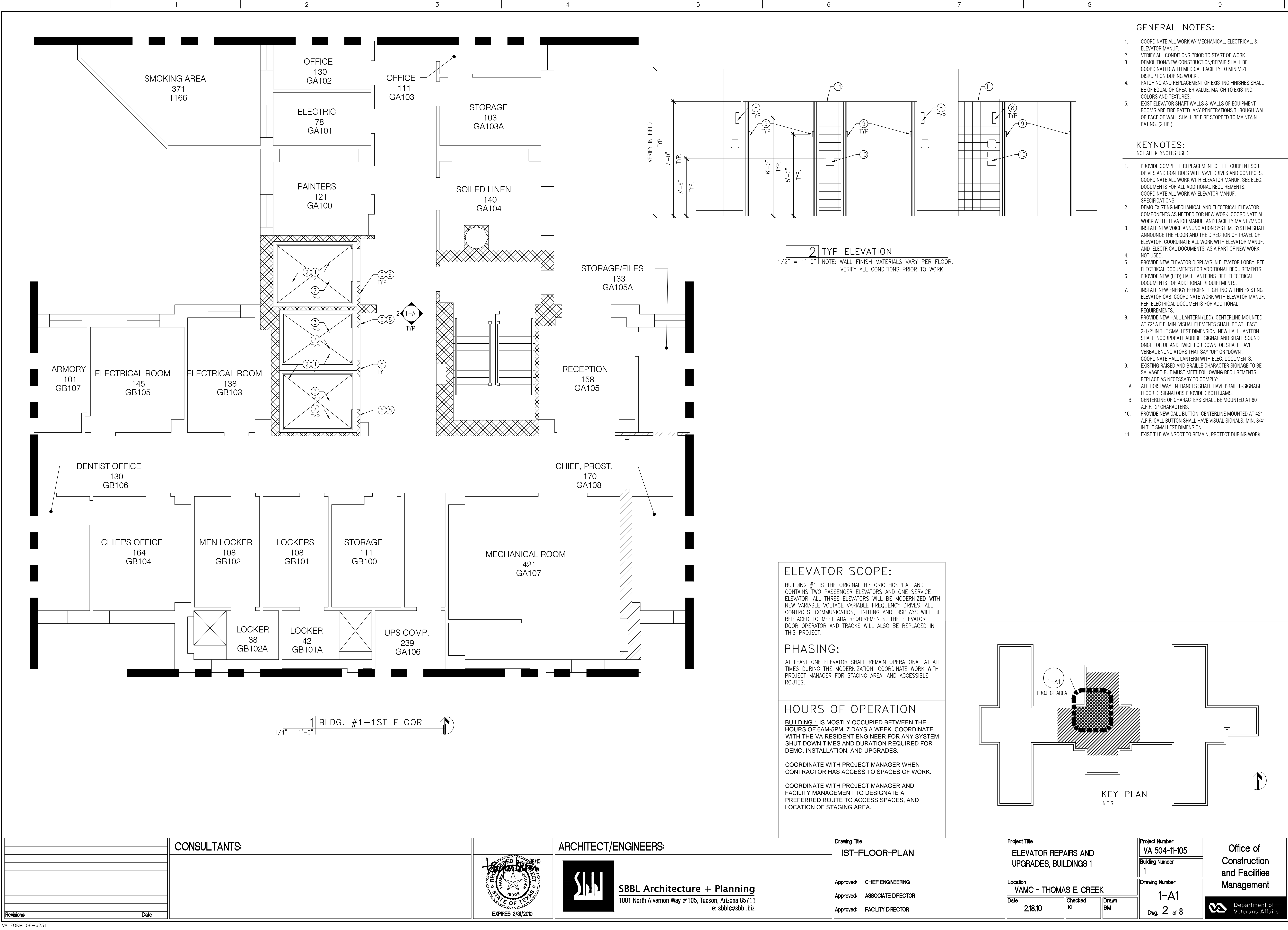


three inches = one foot
one and one half inches = one foot
one inch = one foot
three quarters inch = one foot
one half inch = one foot
three eighths inch = one foot
one quarter inch = one foot
one eighth inch = one foot



GENERAL NOTES:

- COORDINATE ALL WORK W/ MECHANICAL, ELECTRICAL, & ELEVATOR MANUF.
- VERIFY ALL CONDITIONS PRIOR TO START OF WORK.
- DEMOLITION/NEW CONSTRUCTION/REPAIR SHALL BE COORDINATED WITH MEDICAL FACILITY TO MINIMIZE DISRUPTION DURING WORK.
- PATCHING AND REPLACEMENT OF EXISTING FINISHES SHALL BE OF EQUAL OR GREATER VALUE, MATCH TO EXISTING COLORS AND TEXTURES.
- EXIST ELEVATOR SHAFT WALLS & WALLS OF EQUIPMENT ROOMS ARE FIRE RATED. ANY PENETRATIONS THROUGH WALL OR FACE OF WALL SHALL BE FIRE STOPPED TO MAINTAIN RATINGS. (2 HR.).

KEYNOTES:

NOT ALL KEYNOTES USED

- PROVIDE COMPLETE REPLACEMENT OF THE CURRENT SCR DRIVES AND CONTROLS WITH VVVF DRIVES AND CONTROLS. COORDINATE ALL WORK WITH ELEVATOR MANUF. SEE ELEC. DOCUMENTS FOR ALL ADDITIONAL REQUIREMENTS. COORDINATE ALL WORK W/ ELEVATOR MANUF. SPECIFICATIONS.
- DEMO EXISTING MECHANICAL AND ELECTRICAL ELEVATOR COMPONENTS AS NEEDED FOR NEW WORK. COORDINATE ALL WORK WITH ELEVATOR MANUF. AND FACILITY MAINT./MNGT.
- INSTALL NEW VOICE ANNUNCIATION SYSTEM. SYSTEM SHALL ANNOUNCE THE FLOOR AND THE DIRECTION OF TRAVEL OF ELEVATOR. COORDINATE ALL WORK WITH ELEVATOR MANUF. AND ELECTRICAL DOCUMENTS, AS A PART OF NEW WORK. NOT USED.
- PROVIDE NEW ELEVATOR DISPLAYS IN ELEVATOR LOBBY. REF. ELECTRICAL DOCUMENTS FOR ADDITIONAL REQUIREMENTS.
- PROVIDE NEW (LED) HALL LANTERNS. REF. ELECTRICAL DOCUMENTS FOR ADDITIONAL REQUIREMENTS.
- INSTALL NEW ENERGY EFFICIENT LIGHTING WITHIN EXISTING ELEVATOR CAB. COORDINATE WORK WITH ELEVATOR MANUF. REF. ELECTRICAL DOCUMENTS FOR ADDITIONAL REQUIREMENTS.
- PROVIDE NEW HALL LANTERN (LED), CENTERLINE MOUNTED AT 72" A.F.F. MIN. VISUAL ELEMENTS SHALL BE AT LEAST 2-1/2" IN THE SMALLEST DIMENSION. NEW HALL LANTERN SHALL INCORPORATE AUDIBLE SIGNAL AND SHALL SOUND ONCE FOR UP AND TWICE FOR DOWN, AND SHALL HAVE VERBAL ENUNCIATORS THAT SAY 'UP' OR 'DOWN'. COORDINATE HALL LANTERN WITH ELEC. DOCUMENTS.
- EXISTING RAISED AND BRAILLE CHARACTER SIGNAGE TO BE SALVAGED BUT MUST MEET FOLLOWING REQUIREMENTS, REPLACE AS NECESSARY TO COMPLY:
A. ALL HOISTWAY ENTRANCES SHALL HAVE BRAILLE-SIGNAGE FLOOR DESIGNATORS PROVIDED BOTH JAMS.
B. CENTERLINE OF CHARACTERS SHALL BE MOUNTED AT 60" A.F.F., 2" CHARACTERS.
- PROVIDE NEW CALL BUTTON, CENTERLINE MOUNTED AT 42" A.F.F. CALL BUTTON SHALL HAVE VISUAL SIGNALS. MIN. 3/4" IN THE SMALLEST DIMENSION.
- EXIST TILE WAINSCOT TO REMAIN. PROTECT DURING WORK.

ELEVATOR SCOPE:

BUILDING #1 IS THE ORIGINAL HISTORIC HOSPITAL AND CONTAINS TWO PASSENGER ELEVATORS AND ONE SERVICE ELEVATOR. ALL THREE ELEVATORS WILL BE MODERNIZED WITH NEW VARIABLE VOLTAGE VARIABLE FREQUENCY DRIVES. ALL CONTROLS, COMMUNICATION, LIGHTING AND DISPLAYS WILL BE REPLACED TO MEET ADA REQUIREMENTS. THE ELEVATOR DOOR OPERATOR AND TRACKS WILL ALSO BE REPLACED IN THIS PROJECT.

PHASING:

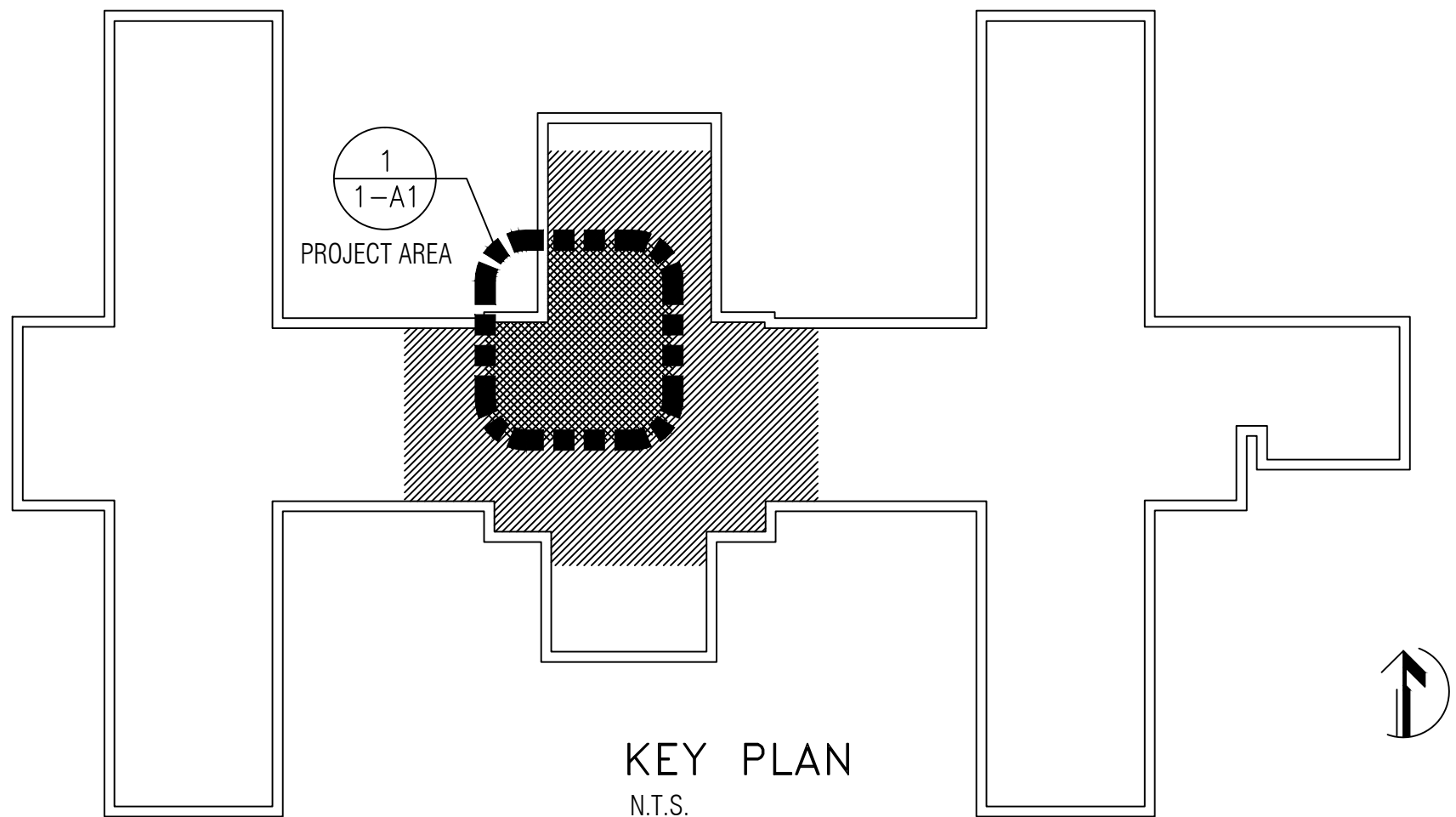
AT LEAST ONE ELEVATOR SHALL REMAIN OPERATIONAL AT ALL TIMES DURING THE MODERNIZATION. COORDINATE WORK WITH PROJECT MANAGER FOR STAGING AREA, AND ACCESSIBLE ROUTES.




HOURS OF OPERATION

BUILDING 1 IS MOSTLY OCCUPIED BETWEEN THE HOURS OF 6AM-5PM, 7 DAYS A WEEK. COORDINATE WITH THE VA RESIDENT ENGINEER FOR ANY SYSTEM SHUT DOWN TIMES AND DURATION REQUIRED FOR DEMO, INSTALLATION, AND UPGRADES.

COORDINATE WITH PROJECT MANAGER WHEN CONTRACTOR HAS ACCESS TO SPACES OF WORK.

COORDINATE WITH PROJECT MANAGER AND FACILITY MANAGEMENT TO DESIGNATE A PREFERRED ROUTE TO ACCESS SPACES, AND LOCATION OF STAGING AREA.



| | | | | | | | | | | | | | | | | | |
|------------|--|--------------|--|--|--|----------------------|--|--|--|---|--|--|--|--|--|---|--|
| | | CONSULTANTS: | | <div> EXPIRES 3/31/2010</div> | | ARCHITECT/ENGINEERS: | | <div> SBBL Architecture + Planning 1001 North Alvernon Way #105, Tucson, Arizona 85711 e: sbbl@sbbl.biz</div> | | <div>Drawing Title 1ST-FLOOR-PLAN</div> <div>Approved: CHIEF ENGINEERING Approved: ASSOCIATE DIRECTOR Approved: FACILITY DIRECTOR</div> | | <div>Project Title ELEVATOR REPAIRS AND UPGRADES, BUILDINGS 1</div> <div>Location VAMC - THOMAS E. CREEK</div> <div>Date 2.18.10</div> <div>Checked KI</div> <div>Drawn BM</div> | | <div>Project Number VA 504-11-105 Building Number 1</div> <div>Drawing Number 1-A1 Dwg. 2 of 8</div> | | <div>Office of Construction and Facilities Management</div> <div> Department of Veterans Affairs</div> | |
| Revisions: | | Date | | | | | | | | | | | | | | | |