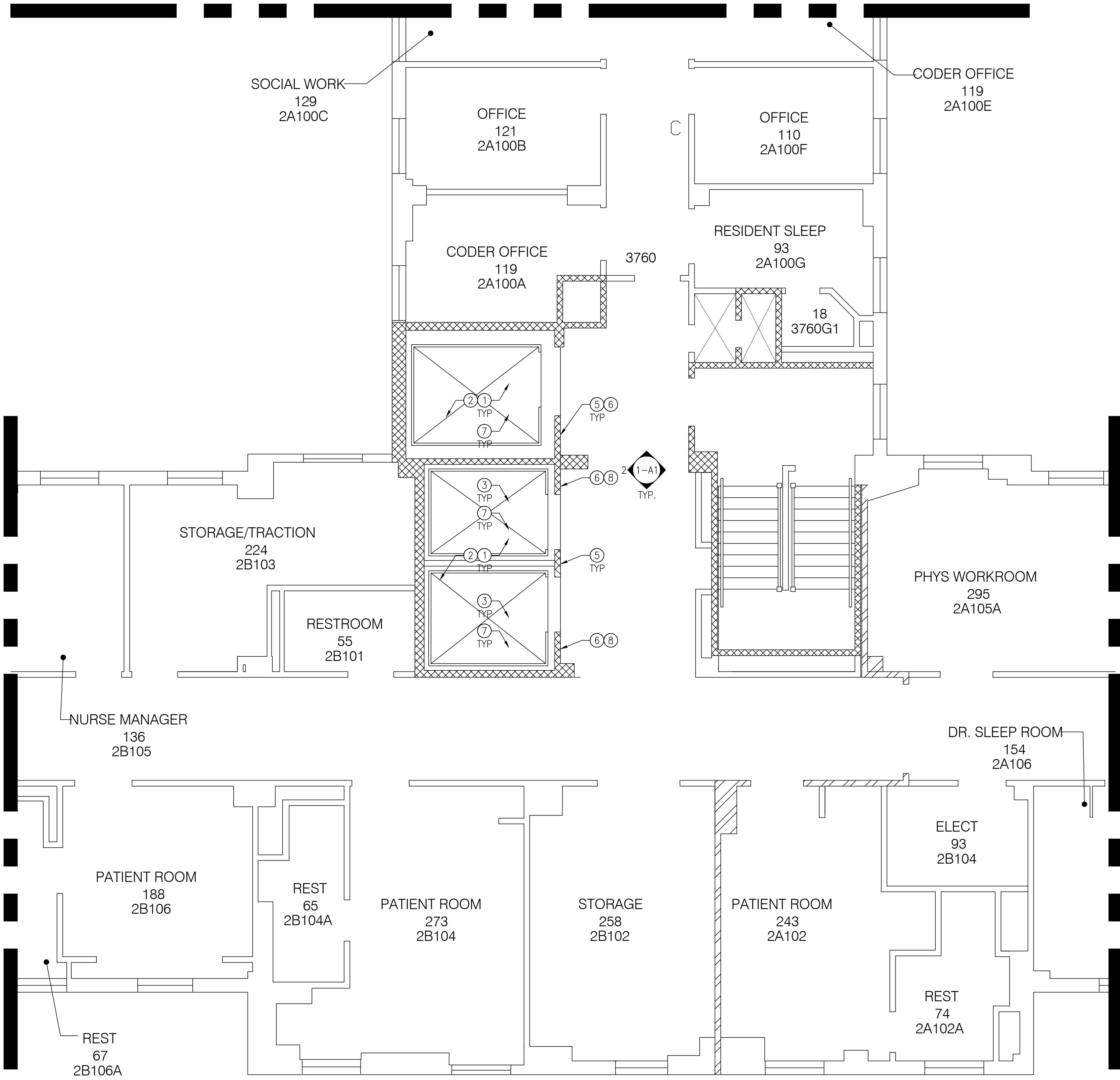


three inches = one foot
one and one half inches = one foot
one inch = one foot
three quarters inch = one foot
one half inch = one foot
three eighths inch = one foot
one quarter inch = one foot
one eighth inch = one foot



1 BLDG. #1-3RD FLOOR
1/4" = 1'-0"

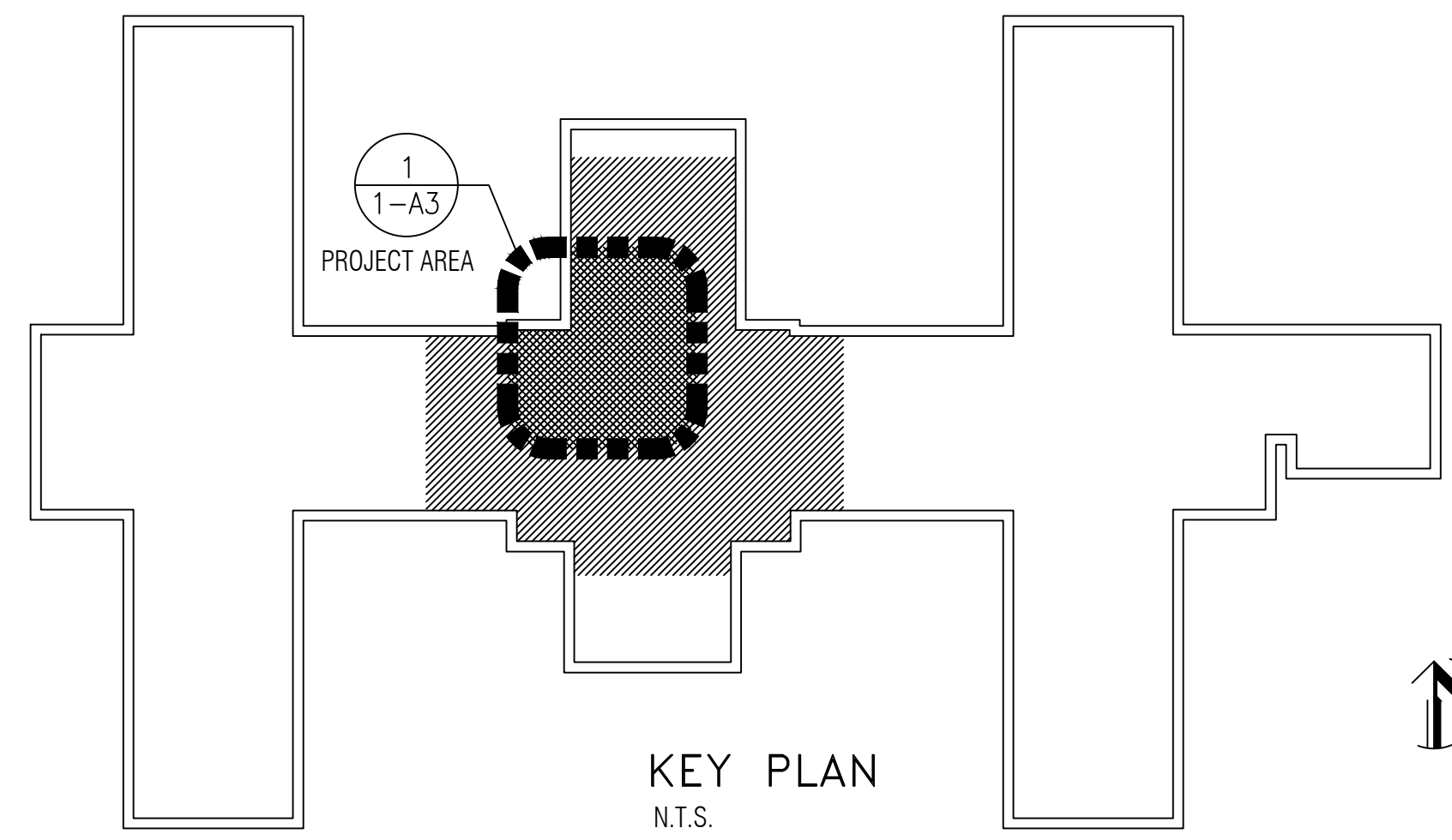
GENERAL NOTES:

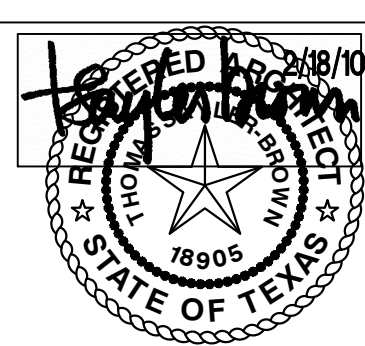
- COORDINATE ALL WORK W/ MECHANICAL, ELECTRICAL, & ELEVATOR MANUF.
- VERIFY ALL CONDITIONS PRIOR TO START OF WORK.
- DEMOLITION/NEW CONSTRUCTION/REPAIR SHALL BE COORDINATED WITH MEDICAL FACILITY TO MINIMIZE DISRUPTION DURING WORK.
- PATCHING AND REPLACEMENT OF EXISTING FINISHES SHALL BE OF EQUAL OR GREATER VALUE, MATCH TO EXISTING COLORS AND TEXTURES.
- EXISTING ELEVATOR SHAFT WALLS & WALLS OF EQUIPMENT ROOMS ARE FIRE RATED. ANY PENETRATIONS THROUGH WALL OF FACE OF WALL BE FIRE STOPPED TO MAINTAIN RATING. (2 HR.).

KEYNOTES:

NOT ALL KEYNOTES USED

- PROVIDE COMPLETE REPLACEMENT OF THE CURRENT SCR DRIVES AND CONTROLS WITH VVVF DRIVES AND CONTROLS. COORDINATE ALL WORK WITH ELEVATOR MANUF. SEE ELEC. AND STRUCT. DOCUMENTS FOR ALL ADDITIONAL REQUIREMENTS. COORDINATE ALL WORK W/ ELEVATOR MANUF. SPECIFICATIONS.
- DEMO EXISTING MECHANICAL AND ELECTRICAL ELEVATOR COMPONENTS AS NEEDED FOR NEW WORK. COORDINATE ALL WORK WITH ELEVATOR MANUF. AND FACILITY MAINT./MNGT.
- INSTALL NEW VOICE ANNUNCIATION SYSTEM. SYSTEM SHALL ANNOUNCE THE FLOOR AND THE DIRECTION OF TRAVEL OF ELEVATOR. COORDINATE ALL WORK WITH ELEVATOR MANUF. AND ELECTRICAL DOCUMENTS, AS A PART OF NEW WORK. NOT USED.
- PROVIDE NEW ELEVATOR DISPLAYS IN ELEVATOR LOBBY. REF. ELECTRICAL DOCUMENTS FOR ADDITIONAL REQUIREMENTS.
- PROVIDE NEW (LED) HALL LANTERNS. REF. ELECTRICAL DOCUMENTS FOR ADDITIONAL REQUIREMENTS.
- INSTALL NEW ENERGY EFFICIENT LIGHTING WITHIN EXISTING ELEVATOR CAB. COORDINATE WORK WITH ELEVATOR MANUF. REF. ELECTRICAL DOCUMENTS FOR ADDITIONAL REQUIREMENTS.
- PROVIDE NEW HALL LANTERN (LED), CENTERLINE MOUNTED AT 72" A.F.F. MIN. VISUAL ELEMENTS SHALL BE AT LEAST 2-1/2" IN THE SMALLEST DIMENSION. NEW HALL LANTERN SHALL INCORPORATE AUDIBLE SIGNAL AND SHALL SOUND ONCE FOR UP AND TWICE FOR DOWN. OR SHALL HAVE VERBAL ENUNCIATORS THAT SAY "UP" OR "DOWN". COORDINATE HALL LANTERN WITH ELEC. DOCUMENTS.
- EXISTING RAISED AND BRAILLE CHARACTER SIGNAGE TO BE SALVAGED BUT MUST MEET FOLLOWING REQUIREMENTS, REPLACE AS NECESSARY TO COMPLY:
 - ALL HOISTWAY ENTRANCES SHALL HAVE BRAILLE-SIGNAGE FLOOR DESIGNATORS PROVIDED BOTH JAMS.
 - CENTERLINE OF CHARACTERS SHALL BE MOUNTED AT 60" A.F.F.; 2" CHARACTERS.
- PROVIDE NEW CALL BUTTON. CENTERLINE MOUNTED AT 42" A.F.F. CALL BUTTON SHALL HAVE VISUAL SIGNALS. MIN. 3/4" IN THE SMALLEST DIMENSION.



		CONSULTANTS:		ARCHITECT/ENGINEERS:	Drawing Title		Project Title		Project Number		Office of Construction and Facilities Management			
					3RD-FLOOR-PLAN		ELEVATOR REPAIRS AND UPGRADES, BUILDINGS 1		VA 504-11-105					
					Approved: CHIEF ENGINEERING		Location		Building Number					
					Approved: ASSOCIATE DIRECTOR		VAMC - THOMAS E. CREEK		1					
Revisions:		Date			Approved: FACILITY DIRECTOR		Date		Checked			Drawing Number		
							2.18.10		KI		1-A3			
									Drawn			Dwg. 4 of 8		
									BM		Department of Veterans Affairs			