

7/29/2015 2:56:05 PM

Plot Date

one thirty second inch = one foot

one sixteenth inch = one foot

one inch = one foot

three quarters inch = one foot

one half inch = one foot

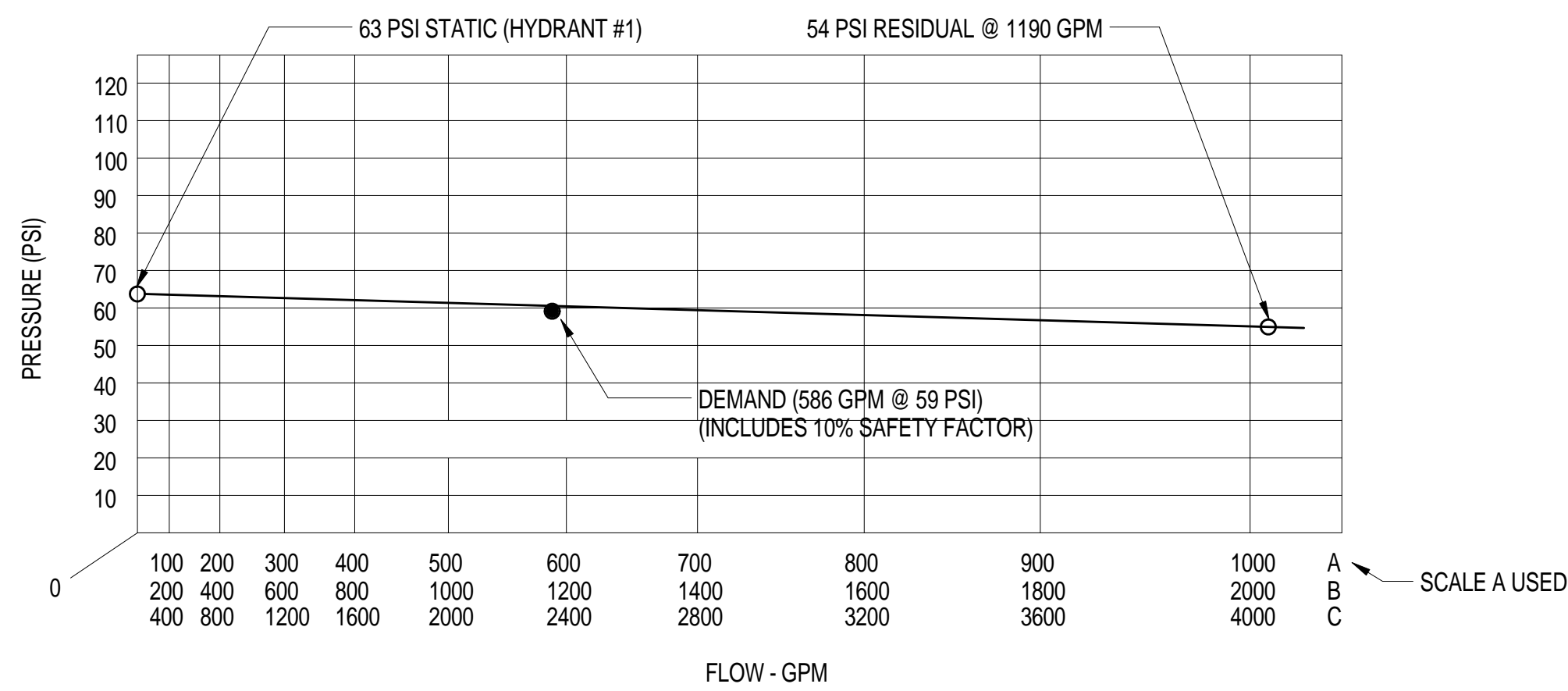
three eighths inch = one foot

one quarter inch = one foot

one eighth inch = one foot

WATER FLOW TEST

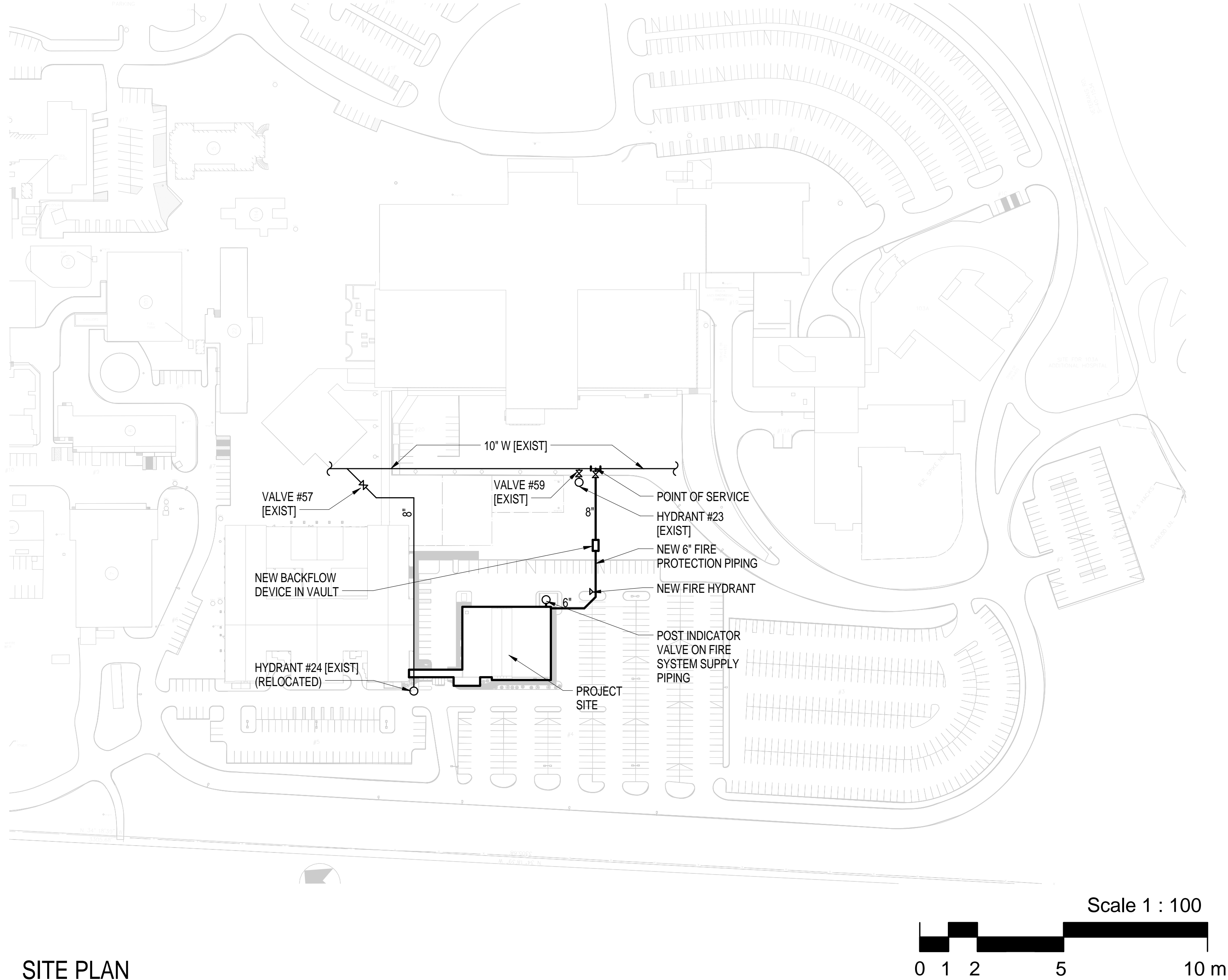
HYDRANT 23
63 PSI STATIC (@ HYDRANT #1)
54 PSI RESIDUAL (@ 1190 GPM)



DEDUCTIVE ALTERNATES	
DEDUCT	
1	Delete one elevator (shaft to remain)
2	Delete the generator
3	Delete the glazing and HVAC components from the overhead connector
4	Delete Terazzo tile from floors and walls of corridors & lobbies
5	Use storefront windows in lieu of curtain wall
6	Paint in lieu of tile
7	Delete the penthouse structure
8	Fixed furnishings in lieu of Herman Miller
9	Use T5 28 watt lighting in lieu of LED lighting
10	Use stucco in lieu of brick
11	Delete the entire overhead connector
REFER TO SPECIFICATIONS AND OTHER DISCIPLINES FOR ADDITIONAL INFORMATION WITH RESPECT TO DEDUCTIVE ALTERNATES.	

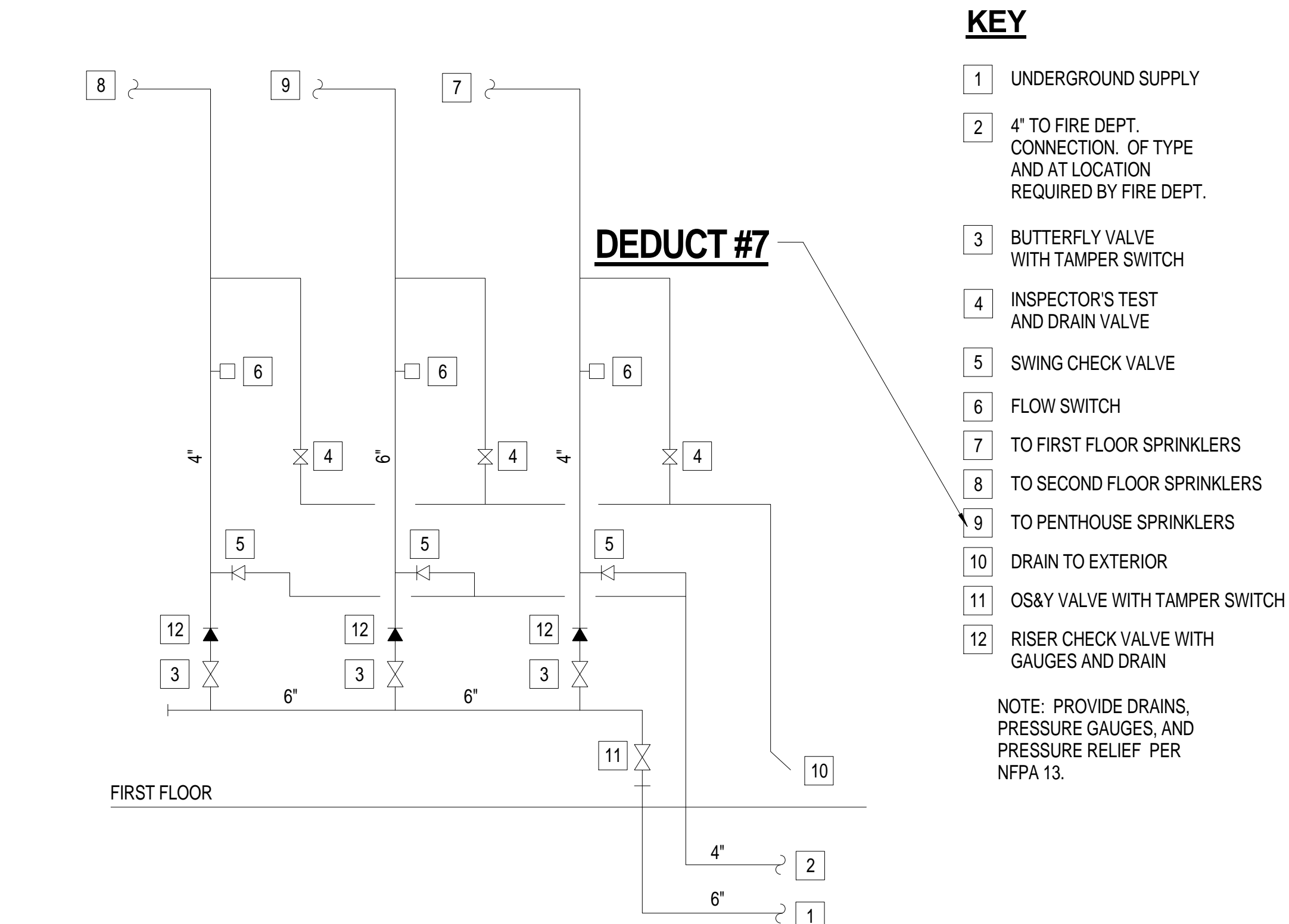
GENERAL NOTES AND CRITERIA

- THE WORK SHOWN ON THE SPRINKLER DRAWINGS CONSTITUTES A PRELIMINARY PLAN OF THE FIRE PROTECTION SYSTEM AS DEFINED BY NFPA 13. THE PURPOSE IS TO DEFINE THE SCOPE OF WORK, SHOW THE PRELIMINARY SYSTEM FEATURES, ESTABLISH PERFORMANCE CRITERIA, AND ESTABLISH A LEVEL OF QUALITY FOR REVIEW BY ALL AUTHORITIES HAVING JURISDICTION. FABRICATION SHOP DRAWINGS AND SUPPORTING HYDRAULIC CALCULATIONS, INCLUDING ADDITIONAL DETAIL AS REQUIRED BY NFPA 13, SHALL BE PREPARED BY THE INSTALLING CONTRACTOR AND SUBMITTED FOR APPROVAL PRIOR TO FABRICATION OR INSTALLATION OF ANY MATERIALS.
- DESIGN STANDARD INCLUDE NFPA 13-2013. COMPLY WITH THE V.A. GUIDELINES AND REGULATIONS, AND AUTHORITY HAVING JURISDICTION.
- THE SEISMIC DESIGN CATEGORY FOR THIS FACILITY IS "D". REFER TO STRUCTURAL DRAWINGS FOR ADDITIONAL DATA. SEISMIC BRACING FOR FIRE PROTECTION SYSTEMS IS REQUIRED. SUBMIT SEISMIC BRACING CALCULATIONS IN THE FORMAT REQUIRED BY NFPA 13-2013. RESTRAIN BRANCHLINES WITH WIRE.
- THE BACKFLOW PREVENTER IS A REDUCED PRESSURE ZONE TYPE. A FRICTION LOSS ALLOWANCE OF 10 PSI SHALL BE INCLUDED FOR THIS DEVICE IN ALL HYDRAULIC CALCULATIONS. AN ADDITIONAL 2 PSI ALLOWANCE SHALL BE INCLUDED FOR LOSSES IN THE DETECTOR CHECK VALVE.
- MECHANICAL ROOMS, ELECTRICAL ROOMS AND STORAGE ROOMS ARE CLASSIFIED ORDINARY HAZARD GROUP 1. MAXIMUM SPRINKLER SPACING SHALL BE 130 SQUARE FEET. SPRINKLER WATER DELIVERY SHALL BE 0.15 GPM/SQFT. OUTSIDE HOSE ALLOWANCE SHALL BE 250 GPM.
- ALL OTHER AREAS ARE CLASSIFIED LIGHT HAZARD OCCUPANCIES WITH A MAXIMUM SPRINKLER SPACING OF 225 SQFT., A WATER DELIVERY OF 0.10 GPM/SQFT, AND AN OUTSIDE HOSE ALLOWANCE OF 100 GPM.
- THE NOMINAL SPRINKLER DESIGN OPERATING AREA FOR LIGHT AND ORDINARY HAZARD AREAS IS 1500 SQFT. THE AREA MAY BE REDUCED AS ALLOWED BY NFPA FOR THE USE OF QUICK RESPONSE SPRINKLERS.
- ALL SPRINKLER CALCULATIONS SHALL INCLUDE A MINIMUM OF 10 PERCENT SAFETY FACTOR. WATER VELOCITY IN INTERIOR PIPING, EXCEPT RISER NIPPLES AND STARTER PIECES, SHALL NOT EXCEED 25 FEET/SECOND.
- DRAIN SYSTEMS SHALL TURN THROUGH THE EXTERIOR WALL APPROXIMATELY 18" ABOVE OUTSIDE GRADE AND SHALL TURN DOWN OVER A CONCRETE SPLASH BLOCK. PAINT TO MATCH ADJACENT WALL MATERIAL.
- SPRINKLER PIPING SHALL NOT BE INSTALLED DIRECTLY OVER ELECTRICAL SWITCHBOARDS OR PANELBOARDS.
- ALL UPRIGHT SPRINKLERS IN THE BUILDING SHALL BE FITTED WITH WIRE HEAD GUARDS.
- PENDANT SPRINKLERS SHALL BE INSTALLED IN THE CENTER OF CEILING TILES.
- FIRE PROTECTION PIPE AND FITTINGS IN THE MECH ROOM SHALL BE PAINTED HIGH GLOSS RED.
- MECH ROOM VALVES MARKED "NC" ARE NORMALLY CLOSED. THE TAMPER SWITCH SHALL RESPOND WHEN THE HANDWHEEL IS MOVED 2.5 TURNS TOWARD THE OPEN POSITION. ALL VALVES WHICH CONTROL FLOW OF WATER TO THE FIRE SUPPRESSION SYSTEM SHALL BE EQUIPPED WITH A TAMPER SWITCH CONNECTED TO THE FIRE ALARM SYSTEM.
- A FULL-SIZE PRINTED SET OF AS-BUILT SPRINKLER DRAWINGS SHALL BE PLACED IN A 4" PVC TUBE AND ATTACHED TO THE WALL IN THE MECH ROOM. PROVIDE REMOVABLE CAPS TO COVER THE ENDS OF THE TUBE. HYDRAULIC ID SIGNS FOR THE BASE BUILDING SHALL BE MOUNTED IN THE MECHANICAL ROOM.
- ALL DEVICES SHALL BE UL LISTED OR FM APPROVED.
- PROVIDE ALL DRAINS AND TEST CONNECTIONS REQUIRED TO COMPLY WITH NFPA13.
- FLUSH PIPING PER NFPA 13.
- EXTENDED COVERAGE SPRINKLERS ARE NOT PERMITTED.



SITE PLAN

HYDRANT FLOW TEST MADE JUNE 27, 2014 BY JON RAY PRICE, LIFEGUARD FIRE PROTECTION
FLOW AVAILABLE AT 20 PSIG = 2500 GPM



RISER DIAGRAM

N.T.S

100% CONSTRUCTION DOCUMENTS

Revisions:	Dates	CONSULTANTS: ROWE PROFESSIONAL SERVICES COMPANY Engineering • Surveying • Aerial Photography / Mapping Landscape Architecture • Planning 511 Broadway Street, Myrtle Beach, SC 29577 Tel: 843.444.1020 www.rowepsc.com Fax: 843.444.3936	ARCHITECT/ENGINEERS: URS 1000 Abernethy Road NE, Suite 900 400 Northpark Tower Center Atlanta, Georgia 30328 Tel: (404) 880-8800 aa+e Accord Architects & Engineers 1101 Johnson Avenue, Suite 104 Myrtle Beach, SC 29577 843.712.1470	Drawing Title GENERAL NOTES, FLOW TEST AND SITE PLAN	Project Title CONSTRUCT CLINIC ADDITION TRACK 3 CLINIC BUILD	Project Number 544-302	Building Number 122	Drawing Number FX-001	Office of Facilities Management Department of Veterans Affairs
Approved: Project Director	Date 07/30/15	Checked Checker	Drawn Author	Location WJBD VA MEDICAL CENTER COLUMBIA, SC 29209					

7/29/2015 2:56:06 PM

PLOT DATE

one thirty second inch = one foot

one sixteenth inch = one foot

one inch = one foot

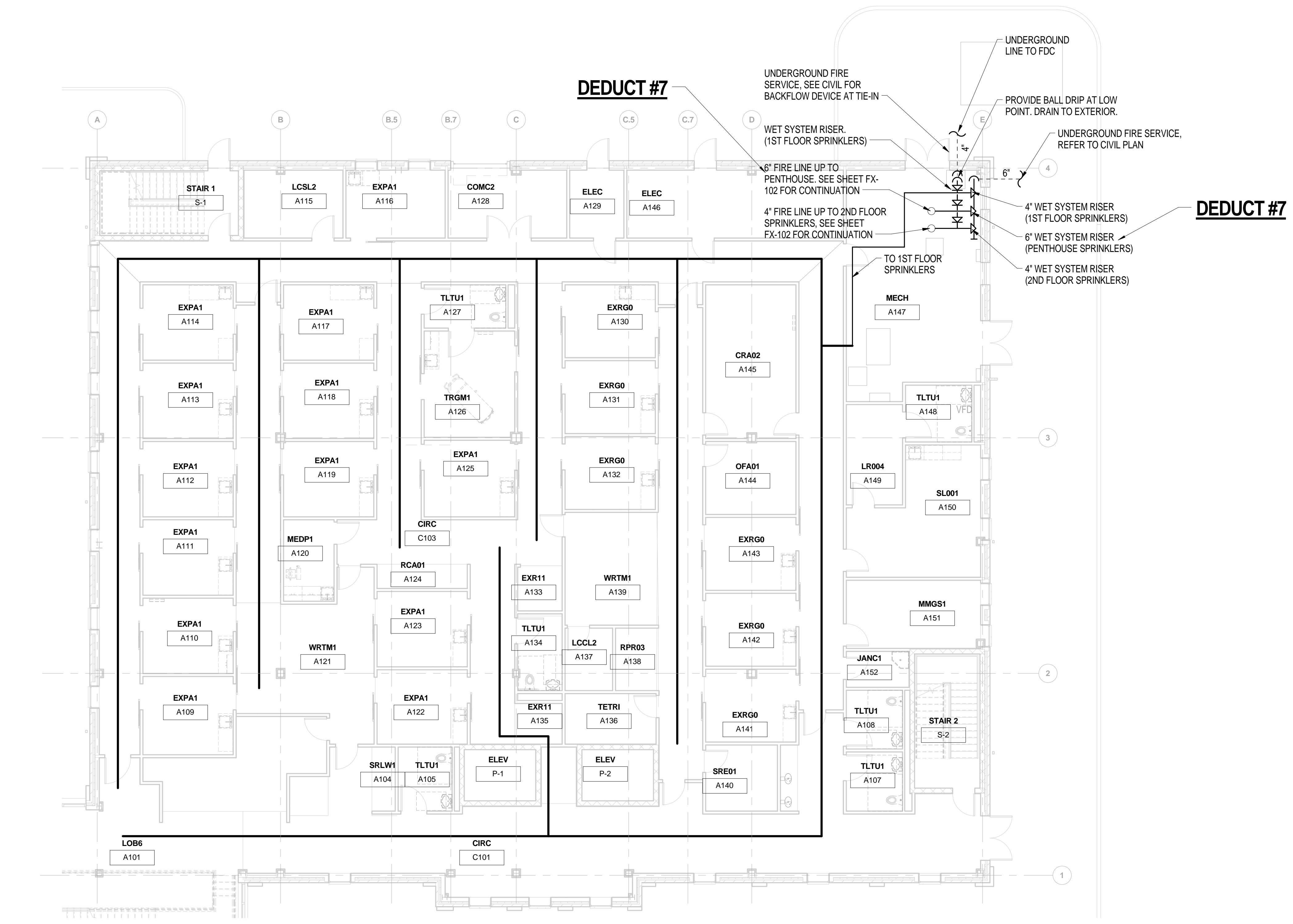
three quarters inch = one foot

one half inch = one foot

three eighths inch = one foot

one quarter inch = one foot

one eighth inch = one foot



F3 FIRST FLOOR SPRINKLER ZONE PLAN
1/8" = 1'-0"

100% CONSTRUCTION DOCUMENTS

<div>Revisions:</div> <table><tr><td> </td><td> </td></tr><tr><td> </td><td> </td></tr><tr><td> </td><td> </td></tr><tr><td> </td><td> </td></tr></table> <div>Dates</div>									<div>CONSULTANTS:</div> <div>ROWE PROFESSIONAL SERVICES COMPANY Engineering • Surveying • Aerial Photography / Mapping Landscape Architecture • Planning 511 Broadway Street, Myrtle Beach, SC 29577 Tel: 843.444.1020 www.roweps.com Fax: 843.444.3936</div>	<div>CHRIS R. CLARK MYRTLE BEACH, SC Professional Engineer No. 3595</div>	<div>ARCHITECT/ENGINEERS:</div> <div>URS architects • engineers • planners 1000 Abernathy Road NE, Suite 900 400 Northpark Tower Center Atlanta, Georgia 30328 Tel: (404) 880-8800</div> <div>aa+e Accord Architects & Engineers 1101 Johnson Avenue, Suite 104 Myrtle Beach, SC 29577 843.712.1470</div>	<div>Drawing Title</div> <div>FIRST FLOOR SPRINKLER ZONE PLAN</div> <div>Approved: Project Director</div>	<div>Project Title</div> <div>CONSTRUCT CLINIC ADDITION TRACK 3 CLINIC BUILD</div> <div>Location</div> <div>WJBD VA MEDICAL CENTER COLUMBIA, SC 29209</div> <div>Date</div> <div>07/30/15</div> <div>Checked</div> <div>Checker</div> <div>Drawn</div> <div>Author</div>	<div>Project Number</div> <div>544-302</div> <div>Building Number</div> <div>122</div> <div>Drawing Number</div> <div>FX-101</div>	<div>Office of Facilities Management</div> <div>Department of Veterans Affairs</div>

[illegible]



100% CONSTRUCTION DOCUMENTS