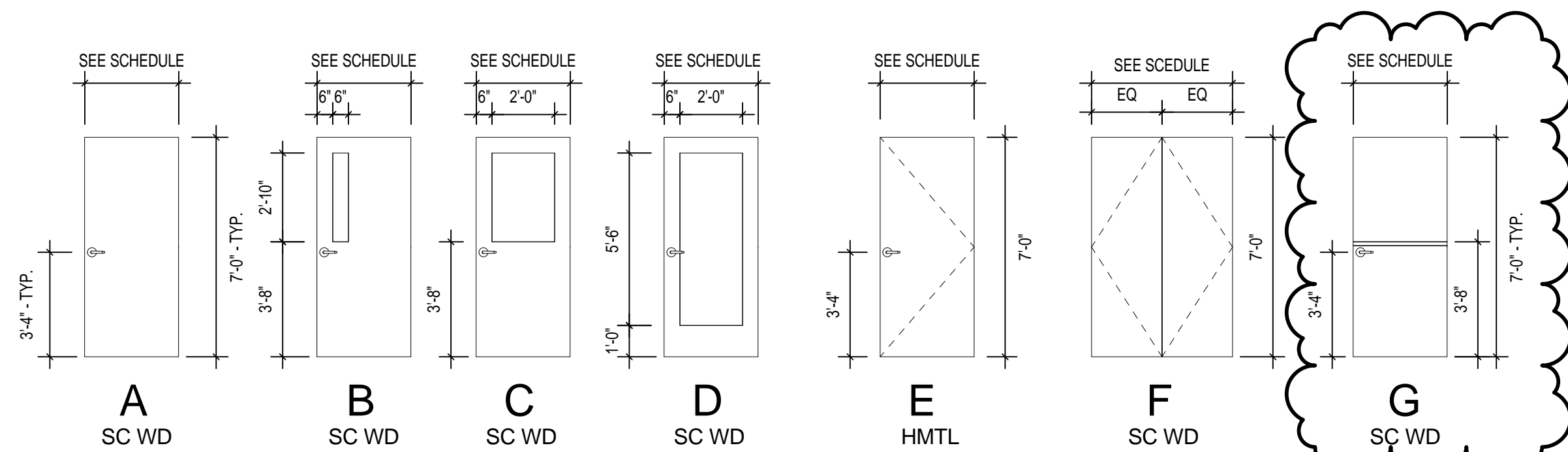


three inches = one foot  
one and one half inch = one foot  
one inch = one foot  
three quarters inch = one foot  
one half inch = one foot  
three eighths inch = one foot  
one quarter inch = one foot  
one eighth inch = one foot

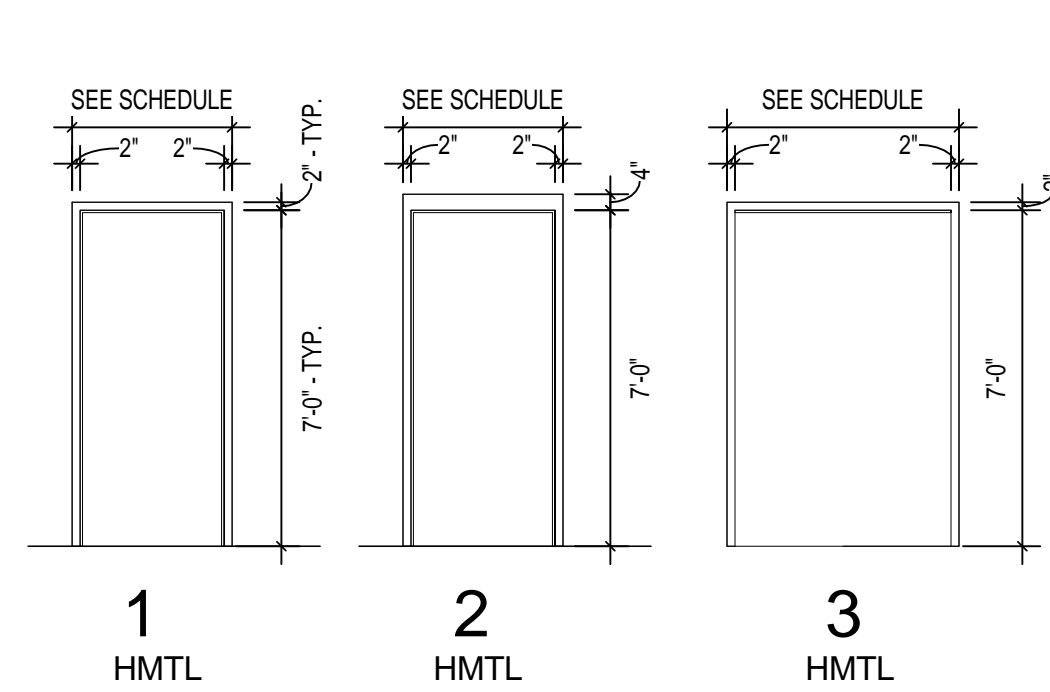
DOOR SCHEDULE													
NO.	DOOR			DOOR TYPE	DOOR MTRL	DOOR FINISH	FIRE RATING	FRAME			DETAILS		COMMENTS
	WIDTH	HEIGHT	THICK					FRAME TYPE	FRAME MTRL	FRAME FINISH	HEAD/ SILL	JAMB	
101	3'-0"	7'-0"	1 3/4"	E	INSUL MTL	PT	90 MIN	2	HM	PT			SELF CLOSING - POSITIVE LATCH
202	3'-0"	7'-0"	1 3/4"	B	SC WD	STND/ CL		1	HM	PT			SUPPLIED BY DEMOUNTABLE PARTITION MANUFACTURER
203	3'-0"	7'-0"	1 3/4"	C	SC WD	STND/ CL		1	HM	PT			
203.1	3'-0"	7'-0"	1 3/4"	C	SC WD	STND/ CL		1	HM	PT			
204	3'-0"	7'-0"	1 3/4"	A	SC WD	STND/ CL	45 MIN	1	HM	PT			SELF CLOSING - POSITIVE LATCH
205	3'-0"	7'-0"	1 3/4"	A	SC WD	STND/ CL	45 MIN	1	HM	PT			SELF CLOSING - POSITIVE LATCH
206	3'-0"	7'-0"	1 3/4"	B	SC WD	STND/ CL		1	HM	PT			SUPPLIED BY DEMOUNTABLE PARTITION MANUFACTURER
207	6'-0"	7'-0"	1 3/4"		SC WD	CU/ STND	45 MIN		HM	PT			PAIR OF DOORS ON ELECTRONIC HOLD OPEN SYSTEM. WILL AUTOMATICLY CLOSE WHEN SMOKE OR FIRE ALARM IS ACTIVATED
208	3'-0"	7'-0"	1 3/4"	A	SC WD	STND/ CL		1	HM	PT			
209	3'-0"	7'-0"	1 3/4"	A	SC WD	STND/ CL		1	HM	PT			
210	3'-0"	7'-0"	1 3/4"	D	SC WD	STND/ CL		1	HM	PT			
211	3'-0"	7'-0"	1 3/4"	B	SC WD	STND/ CL		1	HM	PT			SUPPLIED BY DEMOUNTABLE PARTITION MANUFACTURER
212	3'-4"	7'-0"	1 3/4"	C	SC WD	STND/ CL		1	HM	PT			
213	3'-0"	7'-0"	1 3/4"	A	SC WD	STND/ CL	45 MIN	1	HM	PT			SELF CLOSING - POSITIVE LATCH
214	3'-0"	7'-0"	1 3/4"	A	SC WD	STND/ CL	45 MIN	1	HM	PT			SELF CLOSING - POSITIVE LATCH
215	3'-4"	7'-0"	1 3/4"	C	SC WD	STND/ CL		1	HM	PT			
216	3'-4"	7'-0"	1 3/4"	C	SC WD	STND/ CL		1	HM	PT			
219	3'-0"	7'-0"	1 3/4"	A	SC WD	STND/ CL		1	HM	PT			
220	3'-0"	7'-0"	1 3/4"	A	SC WD	STND/ CL		1	HM	PT			
221	3'-0"	7'-0"	1 3/4"	A	SC WD	STND/ CL		1	HM	PT			
222	3'-0"	7'-0"	1 3/4"	A	SC WD	STND/ CL		1	HM	PT			
223	3'-0"	7'-0"	1 3/4"	A	SC WD	STND/ CL		1	HM	PT			
226	3'-0"	7'-0"	1 3/4"	C	SC WD	STND/ CL		1	HM	PT			
226.1	3'-0"	7'-0"	1 3/4"	C	SC WD	STND/ CL		1	HM	PT			
227	3'-0"	7'-0"	1 3/4"	A	SC WD	STND/ CL		1	HM	PT			
229	3'-0"	7'-0"	1 3/4"	B	SC WD	STND/ CL		1	HM	PT			SUPPLIED BY DEMOUNTABLE PARTITION MANUFACTURER
230	3'-0"	7'-0"	1 3/4"	B	SC WD	STND/ CL		1	HM	PT			SUPPLIED BY DEMOUNTABLE PARTITION MANUFACTURER
231	3'-0"	7'-0"	1 3/4"	B	SC WD	STND/ CL		1	HM	PT			SUPPLIED BY DEMOUNTABLE PARTITION MANUFACTURER
232	3'-0"	7'-0"	1 3/4"	B	SC WD	STND/ CL	45 MIN	1	HM	PT			SELF CLOSING - POSITIVE LATCH
232.1	3'-0"	7'-0"	1 3/4"	C	SC WD	STND/ CL		1	HM	PT			
233	3'-0"	7'-0"	1 3/4"	B	SC WD	STND/ CL		1	HM	PT			
234	3'-0"	7'-0"	1 3/4"	B	SC WD	STND/ CL		1	HM	PT			
236	3'-0"	7'-0"	1 3/4"	B	SC WD	STND/ CL	45 MIN	1	HM	PT			SELF CLOSING - POSITIVE LATCH
236.2	3'-0"	7'-0"	1 3/4"	B	SC WD	STND/ CL	45 MIN	1	HM	PT			SELF CLOSING - POSITIVE LATCH
237	3'-0"	7'-0"	1 3/4"	A	SC WD	STND/ CL		1	HM	PT			
238	3'-0"	7'-0"	1 3/4"	A	SC WD	STND/ CL		1	HM	PT			
239	3'-0"	7'-0"	1 3/4"	A	SC WD	STND/ CL		1	HM	PT			
241	3'-0"	7'-0"	1 3/4"	A	SC WD	STND/ CL		1	HM	PT			
242	3'-0"	7'-0"	1 3/4"	A	SC WD	STND/ CL		1	HM	PT			
243	3'-0"	7'-0"	1 3/4"	D	SC WD	STND/ CL		1	HM	PT			
244	3'-0"	7'-0"	1 3/4"	D	SC WD	STND/ CL		1	HM	PT			
245	3'-0"	7'-0"	1 3/4"	D	SC WD	STND/ CL		1	HM	PT			
246	3'-4"	7'-0"	1 3/4"	C	SC WD	STND/ CL		1	HM	PT			
246.2	3'-4"	7'-0"	1 3/4"	B	SC WD	STND/ CL		1	HM	PT			
247	3'-0"	7'-0"	1 3/4"	E	SC WD	STND/ CL		1	HM	PT			
S-101	3'-0"	7'-0"	1 3/4"	A	SC WD	STND/ CL	90 MIN	2	HM	PT			SELF CLOSING - POSITIVE LATCH
S-101.1	3'-0"	7'-0"	1 3/4"	E	INSUL MTL	PT		2	HM	PT			
S-102	3'-0"	7'-0"	1 3/4"	E	INSUL MTL	PT	90 MIN	2	HM	PT			SELF CLOSING - POSITIVE LATCH
S-102.1	3'-0"	7'-0"	1 3/4"	E	INSUL MTL	PT		2	HM	PT			
S-201	3'-0"	7'-0"	1 3/4"	E	INSUL MTL	PT	90 MIN	2	HM	PT			SELF CLOSING - POSITIVE LATCH
S-202	3'-0"	7'-0"	1 3/4"	E	INSUL MTL	PT	90 MIN	2	HM	PT			SELF CLOSING - POSITIVE LATCH
S-301	3'-0"	7'-0"	1 3/4"	E	INSUL MTL	PT	60 MIN	2	HM	PT			SELF CLOSING - POSITIVE LATCH
S-302	3'-0"	7'-0"	1 3/4"	E	INSUL MTL	PT	90 MIN	2	HM	PT			SELF CLOSING - POSITIVE LATCH
T-1	3'-4"	7'-0"	1 3/4"	E	INSUL MTL	PT	60 MIN	1	HM	PT			
T-3	3'-4"	7'-0"	1 3/4"	E	INSUL MTL	PT	60 MIN	1	HM	PT			
T-4	4'-0"	7'-0"	1 3/4"	E	INSUL MTL	PT	60 MIN	1	HM	PT			
T-5	3'-4"	7'-0"	1 3/4"	G	SCWD	SND/ CL		1	HM	PT			
T-6	3'-0"	7'-0"	1 3/4"	E	SC WD	STND/ CL		1	HM	PT			
T-7	3'-0"	7'-0"	1 3/4"	E	SC WD	STND/ CL		1	HM	PT			
T-10	3'-0"	7'-0"	1 3/4"	A	SC WD	STND/ CL		1	HM	PT			

ABBREVIATION	DESCRIPTION
HM	HOLLOW METAL
INSUL. MTL.	INSULATED METAL
PT	PAINT
SC WD	SOLID CORE WOOD
STND/CL	STAINED CLEAR
WD	WOOD

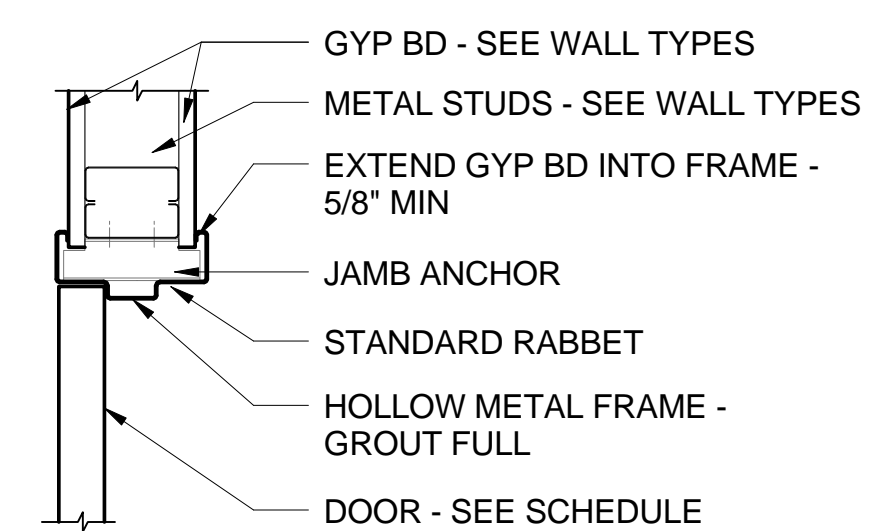
NOTE:  
ALL EXTERIOR DOORS TO BE INSULATED METAL



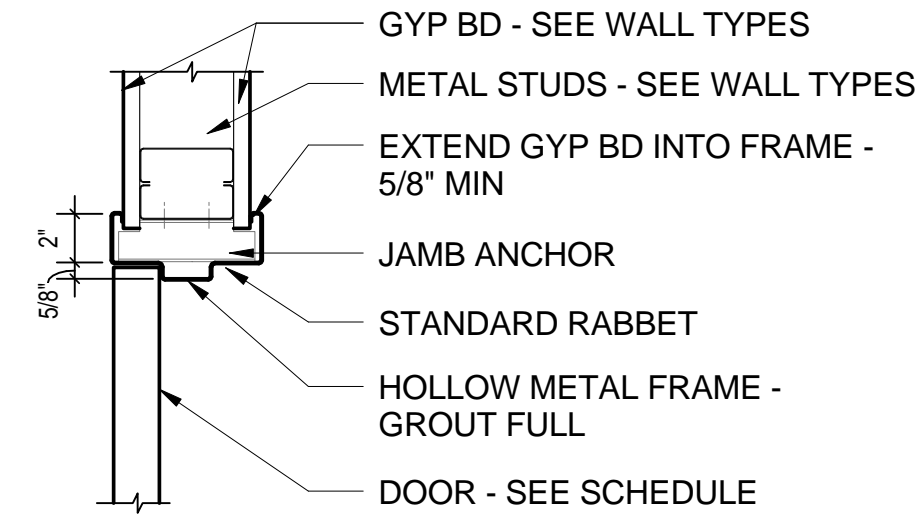
2 DOOR TYPES  
AS601 1/4" = 1'-0"



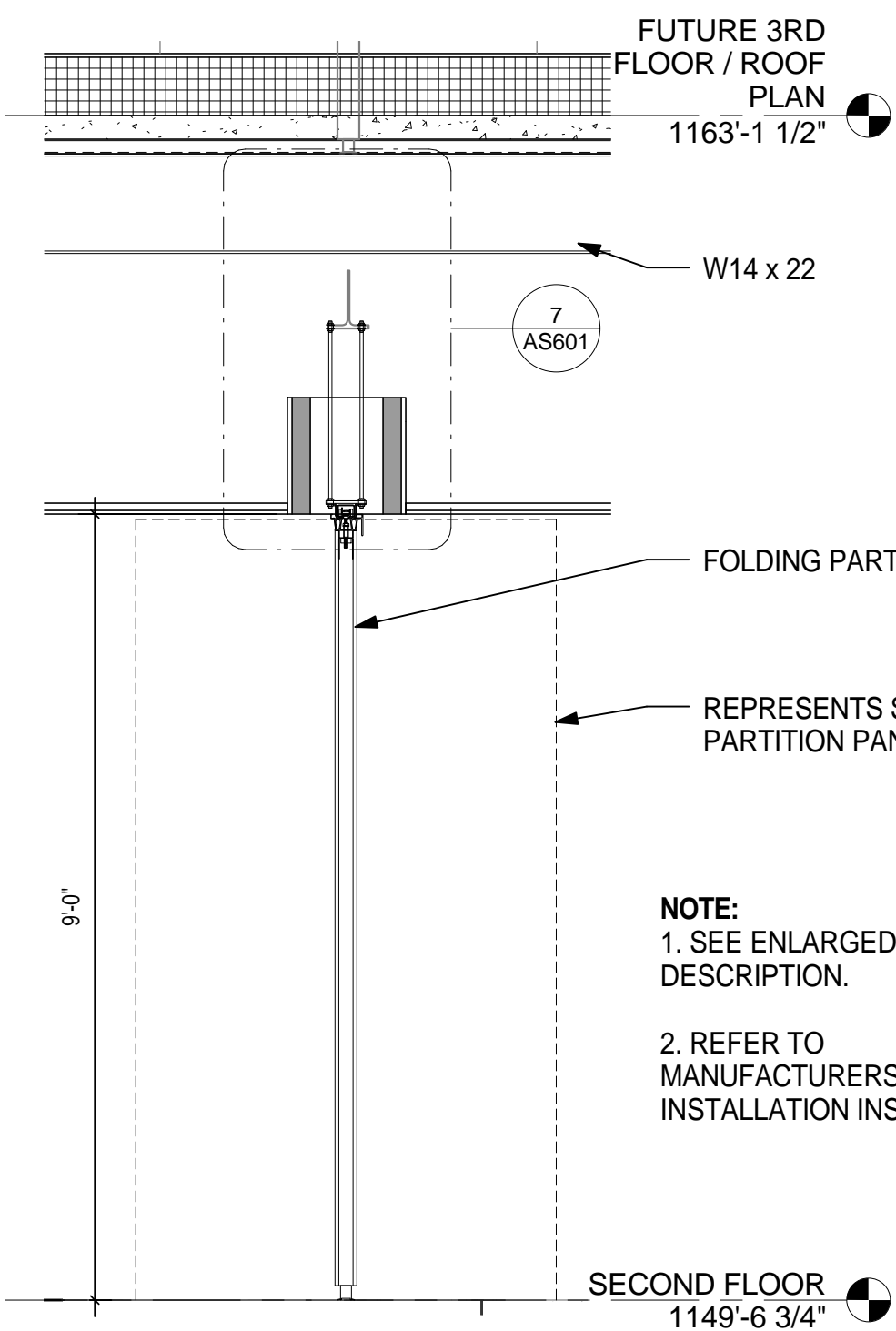
3 FRAME TYPES  
AS601 1/4" = 1'-0"



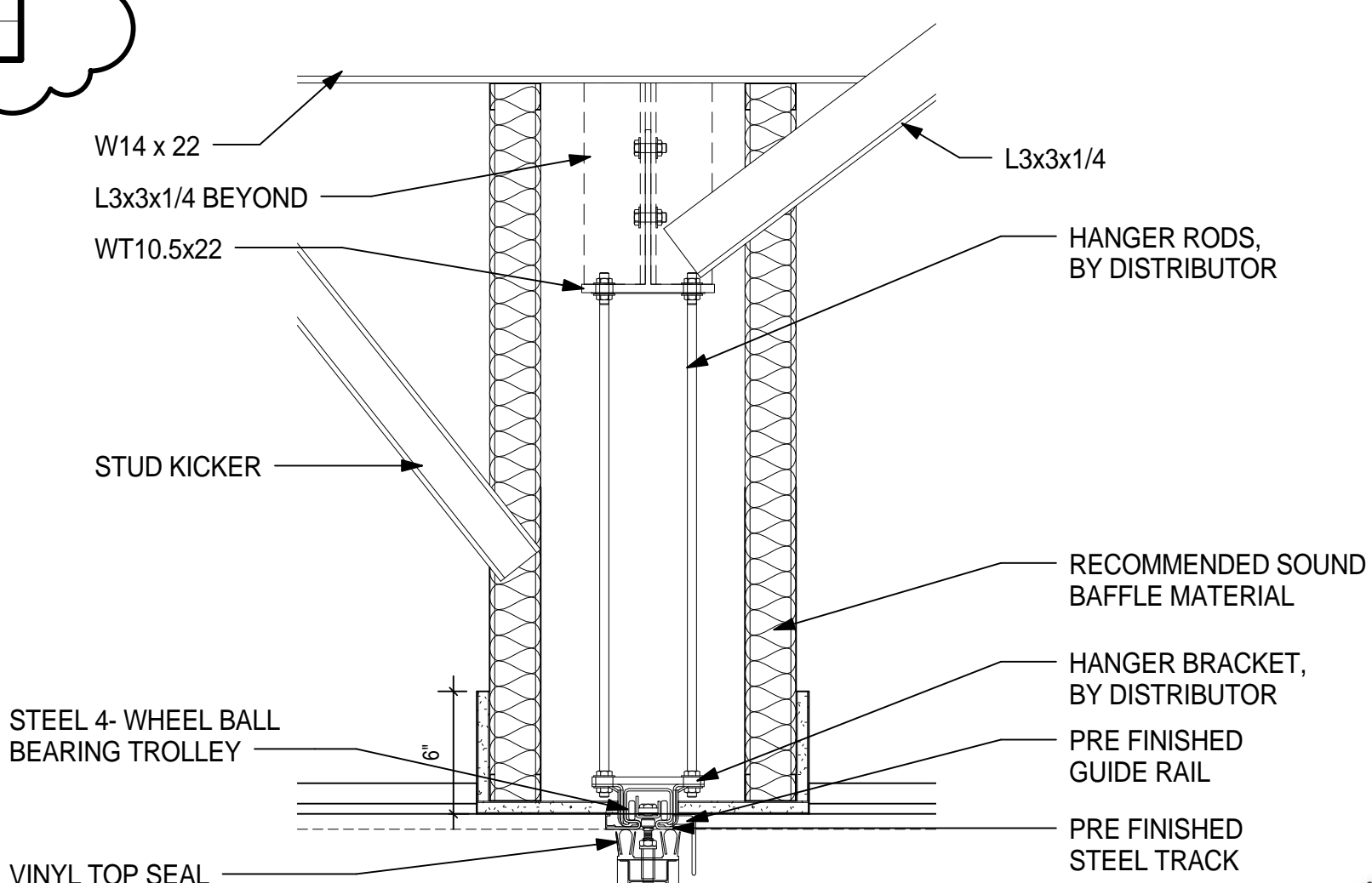
1 DOOR JAMB DETAIL  
AS601 1 1/2" = 1'-0"



5 DOOR HEAD DETAIL  
AS601 1 1/2" = 1'-0"

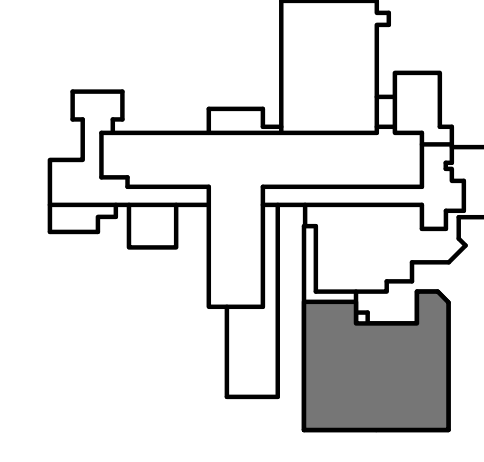
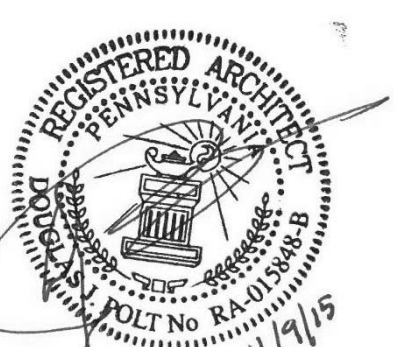


6 MOVABLE PARTITION WALL - SECTION  
AS601 1/2" = 1'-0"



NOTE:  
SEE STRUCTURAL DRAWINGS FOR  
STRUCTURAL CONNECTIONS AND DETAILS.

7 MOVABLE PARTITION WALL - ENLARGED  
AS601 1 1/2" = 1'-0"



KEY PLAN

100% CONSTRUCTION BID DOCUMENT DELLC JOB No. 140701D  
SUBMISSION - FULLY SPRINKLERED

Additions:	Date:
Revisions:	
REVISION 2	5/ 16/ 16

Consultants:  
**BURDETTE KOEHLER MURPHY & ASSOCIATES, INC.**  
MECHANICAL / ELECTRICAL CONSULTING ENGINEERING  
1416 CLARKVIEW ROAD  
BALTIMORE, MARYLAND 21209  
410.323.0600 - FAX 410.317.2543  
**RICKERT ENGINEERING, INC.**  
STRUCTURAL ENGINEERING  
8813 WALTHAM WOODS ROAD, SUITE 200  
BALTIMORE, MARYLAND 21234  
410.663.5110 - FAX 410.663.5114

**BUILDING COST CONSULTANTS**  
COST ESTIMATING  
12917 - 30TH AVENUE  
PLATTSMOUTH, NEBRASKA 68048  
402.298.8260 - FAX 402.298.8290  
**KOFFEL ASSOCIATES, INC.**  
FIRE PROTECTION ENGINEERING  
8815 CENTRE PARK DR., SUITE 200  
COLUMBIA, MARYLAND 21045  
410.750.2246 - FAX 410.750.2588

**WHITMAN, REQUARDT & ASSOCIATES, LLP**  
CIVIL ENGINEERING  
891 South Caroline Street  
Baltimore, MD 21231  
410.235.3450 - FAX: 410.243.5716  
**ROBERT L. SEYMOUR ASSOCIATES**  
AUTOMATIC TRANSPORT ENGINEERING  
162 THOMAS JOHNSON DR. SUITE 200  
FREDERICK, MARYLAND 21702  
301.662.8112 - FAX 301.662.8117

**DERBY de enterprises**  
ARCHITECTURE  
PLANNING  
ENGINEERING  
2215 Conowingo Rd, Suite 100  
Bel Air, Maryland 21015-1436  
410.803.0009  
fax 410.836.6811

**JAMES E. VAN ZANDT**  
**VETERANS ADMINISTRATION**  
**MEDICAL CENTER**

Drawing Title <b>DOOR SCHEDULE &amp; DETAILS</b>
Approved: Associate Director for Operations:
Approved: Director, Medical Center:

Project Title		
EXPAND OUTPATIENT WITH SECOND FLOOR ADDITION		
Building No:	Checked: CPJ/ CAJ	Drawn: JSK/ BKP/ DEK
Location:		

Date 10/ 30/ 15
Project No. 503-308
Drawing No. <b>AS601</b>
Dwg. 31 Of 112

