

# GENERAL NOTES

1 FOR CONTINUATION, SEE H-MH-1.1ND1.

# DRAWING NOTES

1 REMOTE DAMPER OPERATOR TO LINEAR SPRINKLER RISER (NOT SHOWN)

2 CONNECT IF EXIST TO FLOOR COOL

3 THE OPENING OF THE RIGID COOLANT PIPING

4 CONNECT 4" EXIST TO EXIST BROADSIRE

5 OF THE 8" EXIST RIGID COOLANT BROADSIRE

6 OF THE 8" EXIST RIGID COOLANT BROADSIRE

7 OF THE 8" EXIST RIGID COOLANT BROADSIRE

8 OF THE 8" EXIST RIGID COOLANT BROADSIRE

9 OF THE 8" EXIST RIGID COOLANT BROADSIRE

10 OF THE 8" EXIST RIGID COOLANT BROADSIRE

11 OF THE 8" EXIST RIGID COOLANT BROADSIRE

12 OF THE 8" EXIST RIGID COOLANT BROADSIRE

13 OF THE 8" EXIST RIGID COOLANT BROADSIRE

14 OF THE 8" EXIST RIGID COOLANT BROADSIRE

15 OF THE 8" EXIST RIGID COOLANT BROADSIRE

16 OF THE 8" EXIST RIGID COOLANT BROADSIRE

17 OF THE 8" EXIST RIGID COOLANT BROADSIRE

18 OF THE 8" EXIST RIGID COOLANT BROADSIRE

19 OF THE 8" EXIST RIGID COOLANT BROADSIRE

20 OF THE 8" EXIST RIGID COOLANT BROADSIRE

21 OF THE 8" EXIST RIGID COOLANT BROADSIRE

22 OF THE 8" EXIST RIGID COOLANT BROADSIRE

23 OF THE 8" EXIST RIGID COOLANT BROADSIRE

24 OF THE 8" EXIST RIGID COOLANT BROADSIRE

25 OF THE 8" EXIST RIGID COOLANT BROADSIRE

26 OF THE 8" EXIST RIGID COOLANT BROADSIRE

27 OF THE 8" EXIST RIGID COOLANT BROADSIRE

28 OF THE 8" EXIST RIGID COOLANT BROADSIRE

29 OF THE 8" EXIST RIGID COOLANT BROADSIRE

30 OF THE 8" EXIST RIGID COOLANT BROADSIRE

31 OF THE 8" EXIST RIGID COOLANT BROADSIRE

32 OF THE 8" EXIST RIGID COOLANT BROADSIRE

33 OF THE 8" EXIST RIGID COOLANT BROADSIRE

34 OF THE 8" EXIST RIGID COOLANT BROADSIRE

35 OF THE 8" EXIST RIGID COOLANT BROADSIRE

36 OF THE 8" EXIST RIGID COOLANT BROADSIRE

37 OF THE 8" EXIST RIGID COOLANT BROADSIRE

38 OF THE 8" EXIST RIGID COOLANT BROADSIRE

39 OF THE 8" EXIST RIGID COOLANT BROADSIRE

40 OF THE 8" EXIST RIGID COOLANT BROADSIRE

41 OF THE 8" EXIST RIGID COOLANT BROADSIRE

42 OF THE 8" EXIST RIGID COOLANT BROADSIRE

43 OF THE 8" EXIST RIGID COOLANT BROADSIRE

44 OF THE 8" EXIST RIGID COOLANT BROADSIRE

45 OF THE 8" EXIST RIGID COOLANT BROADSIRE

46 OF THE 8" EXIST RIGID COOLANT BROADSIRE

47 OF THE 8" EXIST RIGID COOLANT BROADSIRE

48 OF THE 8" EXIST RIGID COOLANT BROADSIRE

49 OF THE 8" EXIST RIGID COOLANT BROADSIRE

50 OF THE 8" EXIST RIGID COOLANT BROADSIRE

51 OF THE 8" EXIST RIGID COOLANT BROADSIRE

52 OF THE 8" EXIST RIGID COOLANT BROADSIRE

53 OF THE 8" EXIST RIGID COOLANT BROADSIRE

54 OF THE 8" EXIST RIGID COOLANT BROADSIRE

55 OF THE 8" EXIST RIGID COOLANT BROADSIRE

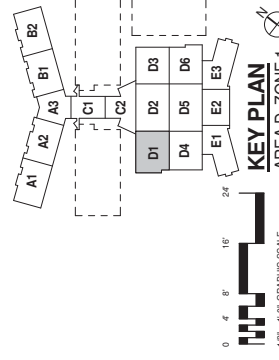
56 OF THE 8" EXIST RIGID COOLANT BROADSIRE

57 OF THE 8" EXIST RIGID COOLANT BROADSIRE

58 OF THE 8" EXIST RIGID COOLANT BROADSIRE

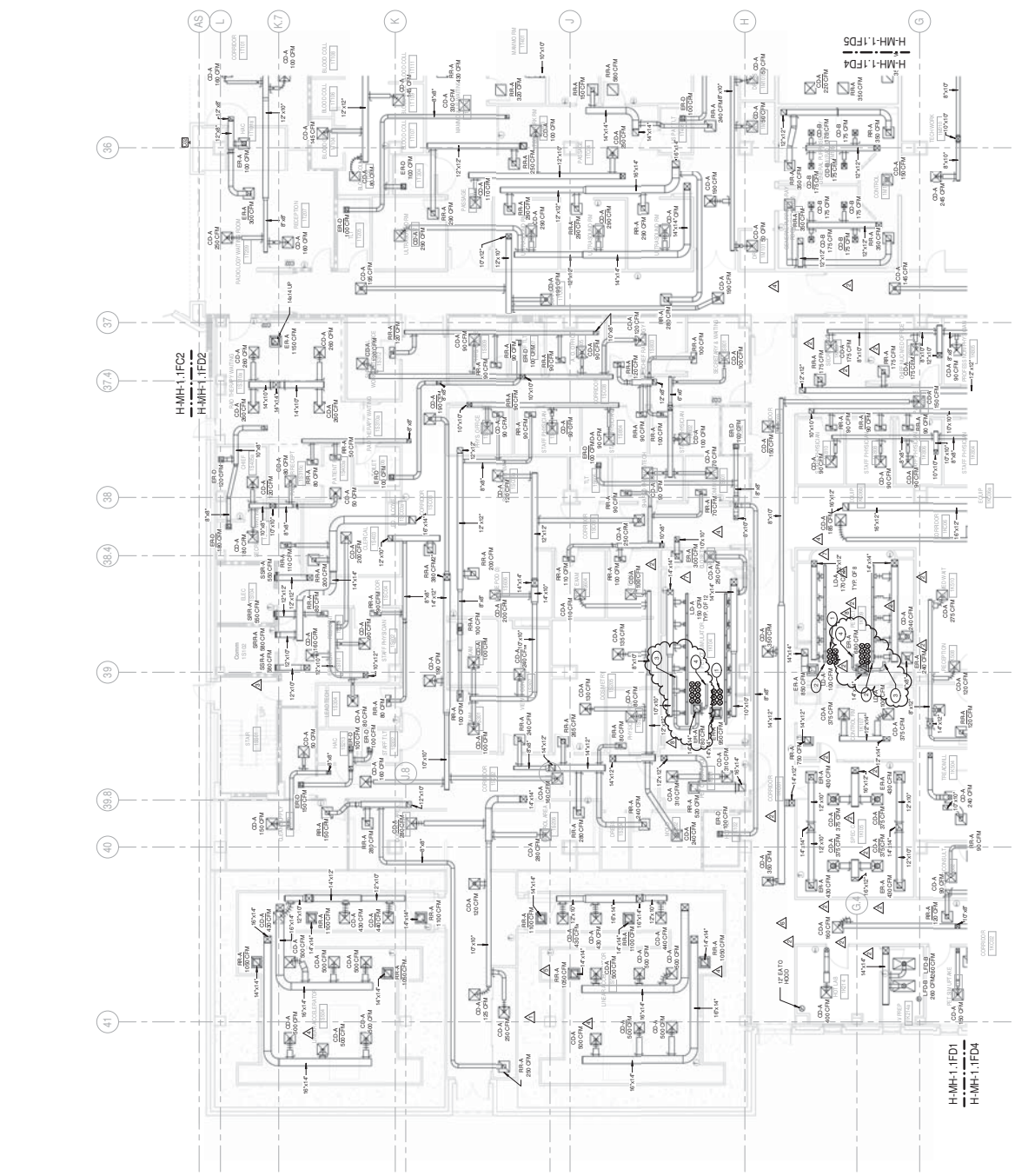
59 OF THE 8" EXIST RIGID COOLANT BROADSIRE

60 OF THE 8" EXIST RIGID COOLANT BROADSIRE



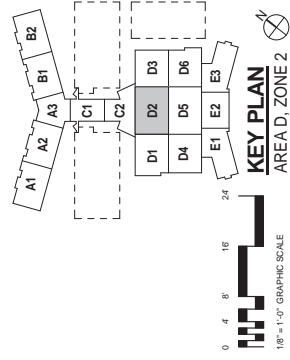
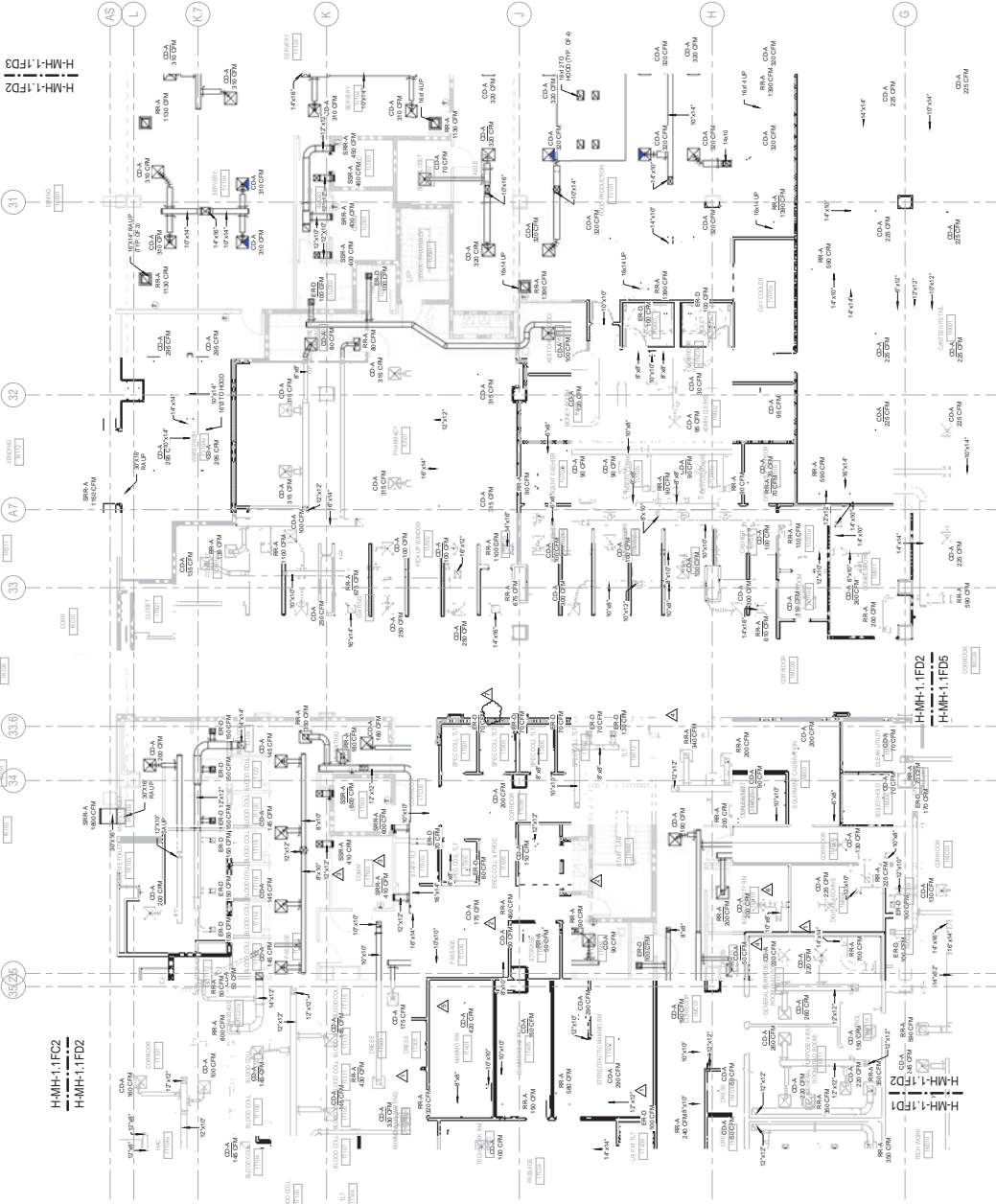
BUILDING IS FULLY SPRINKLERED

<b>CONSULTANTS:</b>		<b>ARCHITECT/ENGINEERS:</b>		<b>Professional Seals:</b>		<b>ELERBE BECKETT</b> <b>R/L F</b> A JOINT VENTURE 178 Union Avenue Winter Park, Florida 32789 407 847 1008		<b>HOSPITAL CLINIC LEVEL 1 AREA D DUCTWORK PLAN</b> Approved Project Director: <i>Melan Arabe</i>		<b>PROJECT FILE:</b> A NEW HOSPITAL FOR VAMC ORLANDO, FLORIDA Location: Orlando, Florida Date: 04 JUNE 2010 Checked: POU Drawn: EB Scale: R/L		<b>OFFICE OF FACILITIES MANAGEMENT</b> Project Number: 03250 Station: 01 AND 02 Drawing Number: H-MH-1.1FD1 Date: 04 JUNE 2010		<b>Department of Veterans Affairs</b>	
---------------------	--	-----------------------------	--	----------------------------	--	--	--	--	--	---	--	--	--	---------------------------------------	--



# GENERAL NOTES

1 FOR CONTINUATION UP, SEE H-MH-1.1ND2A.




0 4 8' 16' 24'  
1/8" = 1'-0" GRAPHIC SCALE

**BUILDING IS FULLY SPRINKLERED**

						CONSULTANTS:		Professional Seals:		ARCHITECT/ENGINEERS:		PROJECT INFO		Project Number		OFFICE OF FACILITIES MANAGEMENT	
												HOSPITAL CLINIC LEVEL 1, AREA D, ZONE 2 DUCTWORK PLAN BID ALTERNATE NO. 3		67-3580		Department of Veterans Affairs	
												Approved Project Designer		Drawing Number		01 AND 02	
												Ellerbe Becket		Location		VAMC ORLANDO, FLORIDA	
												A JOINT VENTURE		City/State		H-MH1-1FD2-A	
												146 Linder Avenue, Suite 1000 West Palm Beach, Florida 33411 407.647.1000		Date		04 JUNE 2010	
												146 Linder Avenue, Suite 1000 West Palm Beach, Florida 33411 407.647.1000		Checked		EB / RLF	
												146 Linder Avenue, Suite 1000 West Palm Beach, Florida 33411 407.647.1000		PQJ1		Drawing Date of Issue	
												146 Linder Avenue, Suite 1000 West Palm Beach, Florida 33411 407.647.1000		Drawn		04 JUNE 2010	
												146 Linder Avenue, Suite 1000 West Palm Beach, Florida 33411 407.647.1000		Revised		04 JUNE 2010	
												146 Linder Avenue, Suite 1000 West Palm Beach, Florida 33411 407.647.1000		Issued		04 JUNE 2010	
												146 Linder Avenue, Suite 1000 West Palm Beach, Florida 33411 407.647.1000		Approved		04 JUNE 2010	
												146 Linder Avenue, Suite 1000 West Palm Beach, Florida 33411 407.647.1000		Sealed		04 JUNE 2010	
												146 Linder Avenue, Suite 1000 West Palm Beach, Florida 33411 407.647.1000		Signed		04 JUNE 2010	
												146 Linder Avenue, Suite 1000 West Palm Beach, Florida 33411 407.647.1000		Witnessed		04 JUNE 2010	
												146 Linder Avenue, Suite 1000 West Palm Beach, Florida 33411 407.647.1000		Notarized		04 JUNE 2010	
												146 Linder Avenue, Suite 1000 West Palm Beach, Florida 33411 407.647.1000		Certified		04 JUNE 2010	
												146 Linder Avenue, Suite 1000 West Palm Beach, Florida 33411 407.647.1000		Validated		04 JUNE 2010	
												146 Linder Avenue, Suite 1000 West Palm Beach, Florida 33411 407.647.1000		Reviewed		04 JUNE 2010	
												146 Linder Avenue, Suite 1000 West Palm Beach, Florida 33411 407.647.1000		Approved		04 JUNE 2010	
												146 Linder Avenue, Suite 1000 West Palm Beach, Florida 33411 407.647.1000		Sealed		04 JUNE 2010	
												146 Linder Avenue, Suite 1000 West Palm Beach, Florida 33411 407.647.1000		Signed		04 JUNE 2010	
												146 Linder Avenue, Suite 1000 West Palm Beach, Florida 33411 407.647.1000		Witnessed		04 JUNE 2010	
												146 Linder Avenue, Suite 1000 West Palm Beach, Florida 33411 407.647.1000		Notarized		04 JUNE 2010	
												146 Linder Avenue, Suite 1000 West Palm Beach, Florida 33411 407.647.1000		Certified		04 JUNE 2010	
												146 Linder Avenue, Suite 1000 West Palm Beach, Florida 33411 407.647.1000		Validated		04 JUNE 2010	
												146 Linder Avenue, Suite 1000 West Palm Beach, Florida 33411 407.647.1000		Reviewed		04 JUNE 2010	
												146 Linder Avenue, Suite 1000 West Palm Beach, Florida 33411 407.647.1000		Approved		04 JUNE 2010	
												146 Linder Avenue, Suite 1000 West Palm Beach, Florida 33411 407.647.1000		Sealed		04 JUNE 2010	
												146 Linder Avenue, Suite 1000 West Palm Beach, Florida 33411 407.647.1000		Signed		04 JUNE 2010	
												146 Linder Avenue, Suite 1000 West Palm Beach, Florida 33411 407.647.1000		Witnessed		04 JUNE 2010	
												146 Linder Avenue, Suite 1000 West Palm Beach, Florida 33411 407.647.1000		Notarized		04 JUNE 2010	
												146 Linder Avenue, Suite 1000 West Palm Beach, Florida 33411 407.647.1000		Certified		04 JUNE 2010	
												146 Linder Avenue, Suite 1000 West Palm Beach, Florida 33411 407.647.1000		Validated		04 JUNE 2010	
												146 Linder Avenue, Suite 1000 West Palm Beach, Florida 33411 407.647.1000		Reviewed		04 JUNE 2010	
												146 Linder Avenue, Suite 1000 West Palm Beach, Florida 33411 407.647.1000		Approved		04 JUNE 2010	
												146 Linder Avenue, Suite 1000 West Palm Beach, Florida 33411 407.647.1000		Sealed		04 JUNE 2010	
												146 Linder Avenue, Suite 1000 West Palm Beach, Florida 33411 407.647.1000		Signed		04 JUNE 2010	
												146 Linder Avenue, Suite 1000 West Palm Beach, Florida 33411 407.647.1000		Witnessed		04 JUNE 2010	
												146 Linder Avenue, Suite 1000 West Palm Beach, Florida 33411 407.647.1000		Notarized		04 JUNE 2010	
												146 Linder Avenue, Suite 1000 West Palm Beach, Florida 33411 407.647.1000		Certified		04 JUNE 2010	
												146 Linder Avenue, Suite 1000 West Palm Beach, Florida 33411 407.647.1000		Validated		04 JUNE 2010	
												146 Linder Avenue, Suite 1000 West Palm Beach, Florida 33411 407.647.1000		Reviewed		04 JUNE 2010	
												146 Linder Avenue, Suite 1000 West Palm Beach, Florida 33411 407.647.1000		Approved		04 JUNE 2010	
												146 Linder Avenue, Suite 1000 West Palm Beach, Florida 33411 407.647.1000		Sealed		04 JUNE 2010	
												146 Linder Avenue, Suite 1000 West Palm Beach, Florida 33411 407.647.1000		Signed		04 JUNE 2010	
												146 Linder Avenue, Suite 1000 West Palm Beach, Florida 33411 407.647.1000		Witnessed		04 JUNE 2010	
												146 Linder Avenue, Suite 1000 West Palm Beach, Florida 33411 407.647.1000		Notarized		04 JUNE 2010	
												146 Linder Avenue, Suite 1000 West Palm Beach, Florida 33411 407.647.1000		Certified		04 JUNE 2010	
												146 Linder Avenue, Suite 1000 West Palm Beach, Florida 33411 407.647.1000		Validated		04 JUNE 2010	
												146 Linder Avenue, Suite 1000 West Palm Beach, Florida 33411 407.647.1000		Reviewed		04 JUNE 2010	
												146 Linder Avenue, Suite 1000 West Palm Beach, Florida 33411 407.647.1000		Approved		04 JUNE 2010	
												146 Linder Avenue, Suite 1000 West Palm Beach, Florida 33411 407.647.1000		Sealed		04 JUNE 2010	
												146 Linder Avenue, Suite 1000 West Palm Beach, Florida 33411 407.647.1000		Signed		04 JUNE 2010	
												146 Linder Avenue, Suite 1000 West Palm Beach, Florida 33411 407.647.1000		Witnessed		04 JUNE 2010	
												146 Linder Avenue, Suite 1000 West Palm Beach, Florida 33411 407.647.1000		Notarized		04 JUNE 2010	
												146 Linder Avenue, Suite 1000 West Palm Beach, Florida 33411 407.647.1000		Certified		04 JUNE 2010	
												146 Linder Avenue, Suite 1000 West Palm Beach, Florida 33411 407.647.1000		Validated		04 JUNE 2010	
												146 Linder Avenue, Suite 1000 West Palm Beach, Florida 33411 407.647.1000		Reviewed		04 JUNE 2010	
												146 Linder Avenue, Suite 1000 West Palm Beach, Florida 33411 407.647.1000		Approved		04 JUNE 2010	
												146 Linder Avenue, Suite 1000 West Palm Beach, Florida 33411 407.647.1000		Sealed		04 JUNE 2010	
												146 Linder Avenue, Suite 1000 West Palm Beach, Florida 33411 407.647.1000		Signed		04 JUNE 2010	
												146 Linder Avenue, Suite 1000 West Palm Beach, Florida 33411 407.647.1000		Witnessed		04 JUNE 2010	
												146 Linder Avenue, Suite 1000 West Palm Beach, Florida 33411 407.647.1000		Notarized		04 JUNE 2010	
												146 Linder Avenue, Suite 1000 West Palm Beach, Florida 33411 407.647.1000		Certified		04 JUNE 2010	
												146 Linder Avenue, Suite 1000 West Palm Beach, Florida 33411 407.647.1000		Validated		04 JUNE 2010	
												146 Linder Avenue, Suite 1000 West Palm Beach, Florida 33411 407.647.1000		Reviewed		04 JUNE 2010	
												146 Linder Avenue, Suite 1000 West Palm Beach, Florida 33411 407.647.1000		Approved		04 JUNE 2010	
												146 Linder Avenue, Suite 1000 West Palm Beach, Florida 33411 407.647.1000		Sealed		04 JUNE 2010	
												146 Linder Avenue, Suite 1000 West Palm Beach, Florida 33411 407.647.1000		Signed		04 JUNE 2010	
												146 Linder Avenue, Suite 1000 West Palm Beach, Florida 33411 407.647.1000		Witnessed		04 JUNE 2010	
												146 Linder Avenue, Suite 1000 West Palm Beach, Florida 33411 407.647.1000		Notarized		04 JUNE 2010	
												146 Linder Avenue, Suite 1000 West Palm Beach, Florida 33411 407.647.1000		Certified		04 JUNE 2010	
												146 Linder Avenue, Suite 1000 West Palm Beach, Florida 33411 407.647.1000		Validated		04 JUNE 2010	
												146 Linder Avenue, Suite 1000 West Palm Beach, Florida 33411 407.647.1000		Reviewed		04 JUNE 2010	
												146 Linder Avenue, Suite 1000 West Palm Beach, Florida 33411 407.647.1000		Approved		04 JUNE 2010	
												146 Linder Avenue, Suite 1000 West Palm Beach, Florida 33411 407.647.1000		Sealed		04 JUNE 2010	
												146 Linder Avenue, Suite 1000 West Palm Beach, Florida 33411 407.647.1000		Signed		04 JUNE 2010	
												146 Linder Avenue, Suite 1000 West Palm Beach, Florida 33411 407.647.1000		Witnessed		04 JUNE 2010	
												146 Linder Avenue, Suite 1000 West Palm Beach, Florida 33411 407.647.1000		Notarized		04 JUNE 2010	
												146 Linder Avenue, Suite 1000 West Palm Beach, Florida 33411 407.647.1000		Certified		04 JUNE 2010	
												146 Linder Avenue, Suite 1000 West Palm Beach, Florida 33411 407.647.1000		Validated		04 JUNE 2010	
												146 Linder Avenue, Suite 1000 West Palm Beach, Florida 33411 407.647.1000		Reviewed		04 JUNE 2010	
												146 Linder Avenue, Suite 1000 West Palm Beach, Florida 33411 407.647.1000		Approved		04 JUNE 2010	
												146 Linder Avenue, Suite 1000 West Palm Beach, Florida 33411 407.647.1000		Sealed		04 JUNE 2010	
												146 Linder Avenue, Suite 1000 West Palm Beach, Florida 33411 407.647.1000		Signed		04 JUNE 2010	
												146 Linder Avenue, Suite 1000 West Palm Beach, Florida 33411 407.647.1000		Witnessed		04 JUNE 2010	
												146 Linder Avenue, Suite 1000 West Palm Beach, Florida 33411 407.647.1000		Notarized		04 JUNE 2010	
												146 Linder Avenue, Suite 1000 West Palm Beach, Florida 33411 407.647.1000		Certified		04 JUNE 2010	
												146 Linder Avenue, Suite 1000 West Palm Beach, Florida 33411 407.647.1000		Validated		04 JUNE 2010	
												146 Linder Avenue, Suite 1000 West Palm Beach, Florida 33411 407.647.1000		Reviewed		04 JUNE 2010	
												146 Linder Avenue, Suite 1000 West Palm Beach, Florida 33411 407.647.1000		Approved		04 JUNE 2010	
												146 Linder Avenue, Suite 1000 West Palm Beach, Florida 33411 407.647.1000		Sealed		04 JUNE 2010	
												146 Linder Avenue, Suite 1000 West Palm Beach, Florida 33411 407.647.1000		Signed		04 JUNE 2010	
												146 Linder Avenue, Suite 1000 West Palm Beach, Florida 33411 407.647.1000		Witnessed		04 JUNE 2010	
												146 Linder Avenue, Suite 1000 West Palm Beach, Florida 33411 407.647.1000		Notarized		04 JUNE 2010	
												146 Linder Avenue, Suite 1000 West Palm Beach, Florida 33411 407.647.1000		Certified		04 JUNE 2010	
												146 Linder Avenue, Suite 1000 West Palm Beach, Florida 33411 407.647.1000		Validated		04 JUNE 2010	
												146 Linder Avenue, Suite 1000 West Palm Beach, Florida 33411 407.647.1000		Reviewed		04 JUNE 2010	
												146 Linder Avenue, Suite 1000 West Palm Beach, Florida 33411 407.647.1000		Approved		04 JUNE 2010	
												146 Linder Avenue, Suite 1000 West Palm Beach, Florida 33411 407.647.1000		Sealed		04 JUNE 2010	
												146 Linder Avenue, Suite 1000 West Palm Beach, Florida 33411 407.647.1000		Signed		04 JUNE 2010	
												146 Linder Avenue, Suite 1000 West Palm Beach, Florida 33411 407.647.1000		Witnessed</			

[illegible]

---

CONSULTANTS:	Professional Seals:
	

**ARCHITECT/ENGINEERS:**

**RLF**

**A JOINT**

146 Lincoln Avenue  
Winter Park, Florida 32789  
407 647 1039

**ELLERBE BECKET**  
**7**  
**ENTURE**  
1001 G Street NW, Suite 1000  
Washington, D.C. 20001  
202 654 9300

Drawing Title  
HOSPITAL/CLINIC  
LEVEL 1, AREA D, ZONE 3  
DUCTWORK PLAN  
Approved: Project Director

Project 1: ESE	Location Orlando, Florida		Checked PGUJ	Drawn EB / RLF
Date 04 JUNE, 2010				

Product Number 673-950  
 Shipping Number 01 AND 02  
 Drawing Number H-MH1.1FD3  
 Drawing 2246 of 4322

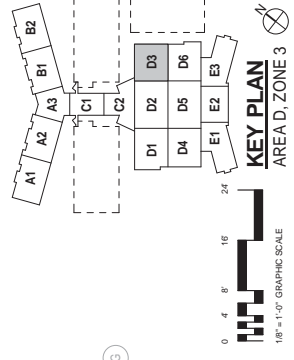


Department of  
Veterans Affairs

**GENERAL NOTES**

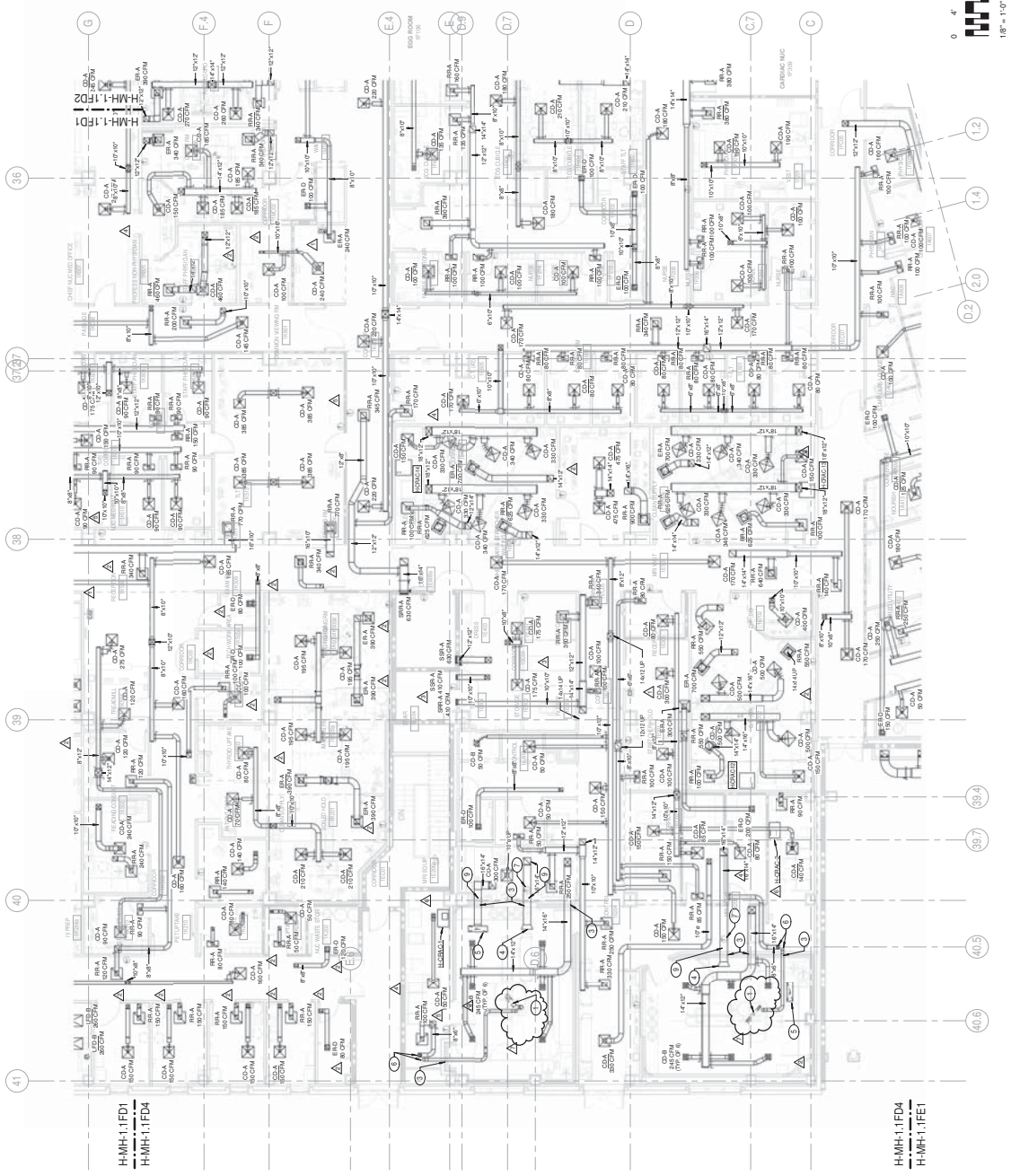
## DRAWING NOTES

1. COPPER PIPING BELOW SLAB FOR FREEZE PROTECTION. SEE SPEC. SECTION 2321.13 FOR SPEC. ON COPPER PIPING.
2. 12-0" W x 2-6" H x 3-4" D PLENUM BLANKOFF UNUSED PORTION OF LOUVER. REFER TO DETAIL FOR LOUVER BLANKOFF PANEL DETAIL.
3. 7-6" H x 3-2" W x 2-6" D PLENUM BLANKOFF UNUSED PORTION OF LOUVER. REFER TO MH-5506S FOR LOUVER BLANKOFF PANEL DETAIL.



BUILDING IS FULLY SPRINKLERED

**KEY PLAN**  
AREA D, ZONE 3

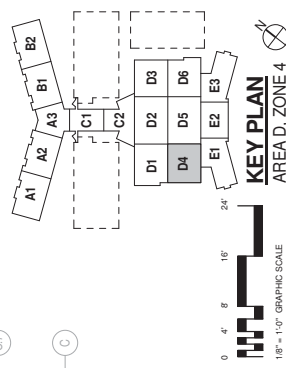


1 FOR CONTINUATION UP, SEE H-MH-1.1ND4A.

**DRAWING NOTES**

- 1 QUENCH VENT FROM MFR SYSTEM TO BE PROVIDED BY MFR VENDOR. CONTRACTOR TO PROVIDE INSULATION FOR QUENCH VENT INSIDE RF SHIELD. SEE SPECIFICATION SECTION 230711 FOR INSULATION REQUIREMENTS.
- 2 NOT USED
- 3 PROVIDE RF WAVE FILTER AT DUCT

- 1 PROVIDE 1/4" WAVE FRET ATTRACT TO THE BOTTOM OF THE COIL DRAINAGE ALUMINUM DUCT WORK. DISPERSE AND SHIELD THE COIL DRAINAGE ALUMINUM DUCT WITH A 1/4" WAVE FRET ATTRACT TO THE BOTTOM OF THE COIL DRAINAGE ALUMINUM DUCT.
- 2 OPEN END DUCT TO AIR TO X-MAX WITH NORMAL MESH SCREEN (130 CFM).
- 3 4" X 2" EXHAUST GRILLE (130 CFM).
- 4 CONNECT TO EXHAUST COIL DRAINAGE SYSTEM COORDINATE WITH MECHANICAL MANUFACTURER FOR DUCT LOCATION.
- 5 DUCT REQUIRED TEMPERATURE SENSOR.
- 6 NOT USED.



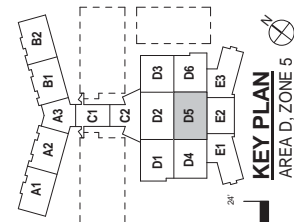
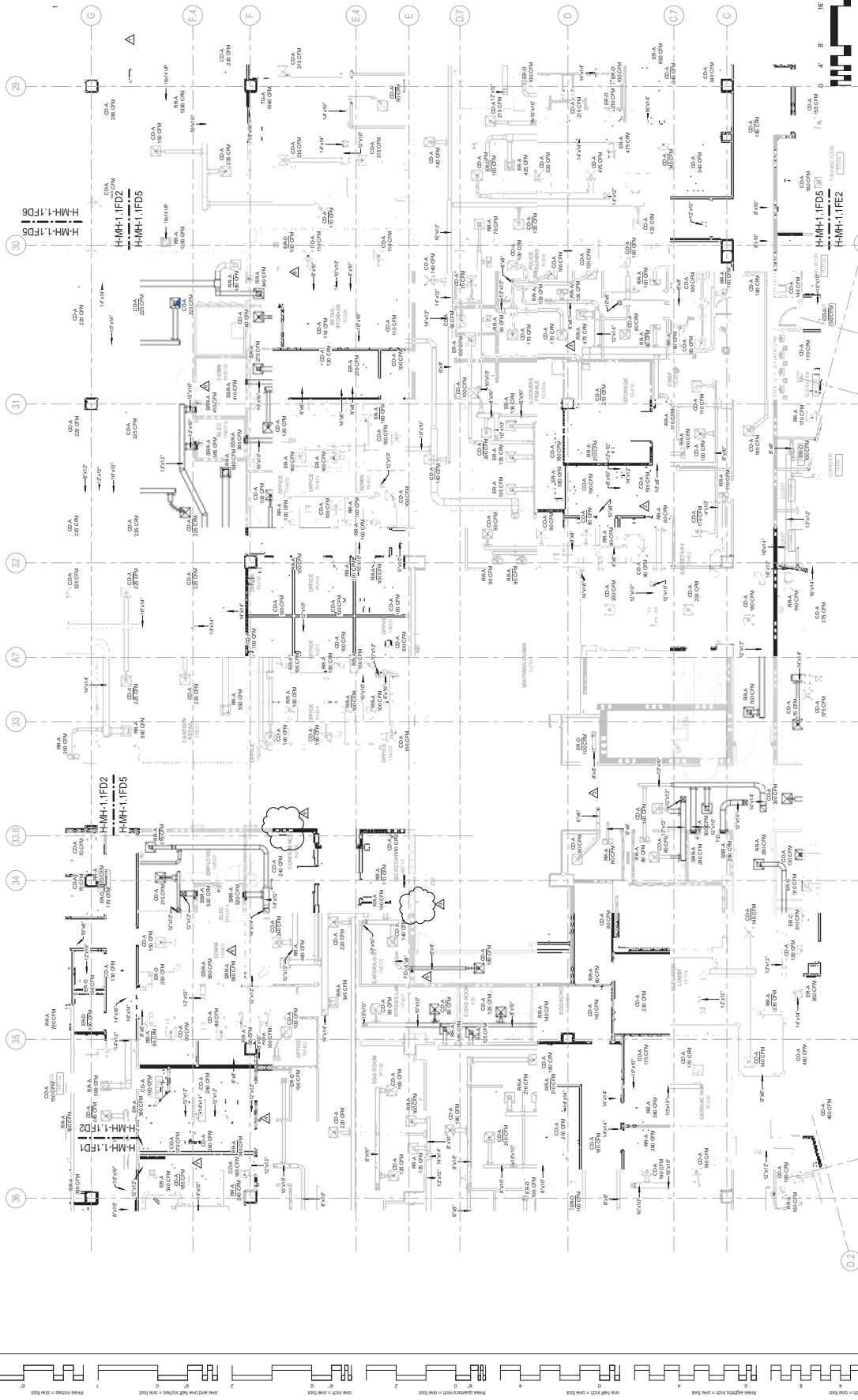
BUILDING IS FULLY SPRINKLERED

[illegible]



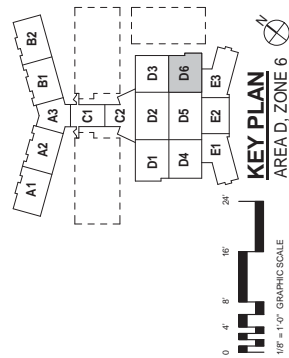
# GENERAL NOTES

1. FOR CONTINUATION UP, SEE H-MH-1.IND5A



**BUILDING IS FULLY SPRINKLERED**

<b>PROJECT TITLE</b> A NEW HOSPITAL FOR VAMC ORLANDO, FLORIDA		<b>PROJECT NUMBER</b> 03-050		<b>OFFICE OF FACILITIES MANAGEMENT</b> Department of Veterans Affairs	
<b>DESIGN</b> H-MH-1.1FD5		<b>DATE</b> 01 AND 02		<b>REVISIONS</b> H-MH-1.1FD5-A	
<b>APPROVED PROJECT DESIGNER</b> [Signature]		<b>DATE</b> 04 JUNE 2010		<b>BY</b> [Signature]	
<b>ARCHITECT/ENGINEERS:</b> <b>RLE</b> ELLEN BECKETT 1765 United Avenue Winter Park, Florida 32789 407.847.1008		<b>PROFESSIONAL SEALS:</b> 		<b>CONSULTANTS:</b>	
<b>DATE</b> 06/17/2011		<b>DESCRIPTION</b> CR 098		<b>DATE</b> 06/17/2011	
<b>DATE</b> 06/16/2011		<b>DESCRIPTION</b> CR 122		<b>DATE</b> 06/16/2011	
<b>DATE</b> 10/14/2011		<b>DESCRIPTION</b> CR 160		<b>DATE</b> 10/14/2011	
<b>DATE</b> 10/17/2011		<b>DESCRIPTION</b> CR 132		<b>DATE</b> 10/17/2011	
<b>DATE</b> 04/02/2012		<b>DESCRIPTION</b> CR 272		<b>DATE</b> 04/02/2012	
<b>DATE</b> 10/05/2012		<b>DESCRIPTION</b> CR 353		<b>DATE</b> 10/05/2012	



BUILDING IS FULLY SPRINKLERED

[illegible]

VA FORM 08-6231, OCT 1978