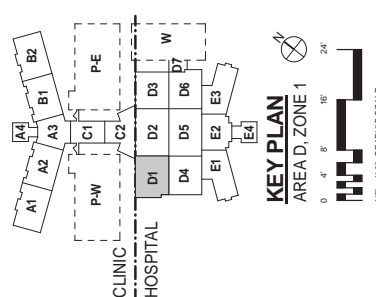


KEY NOTES: ○

- 1 ACTUATING SWITCHES.
- 2 1/2"OX, 1/2"MA, AND 1-1/2"
- 3 LOCK VALVES IN THE OPPOSITE DIRECTION OF THE KEYS TO THE RESIDENT

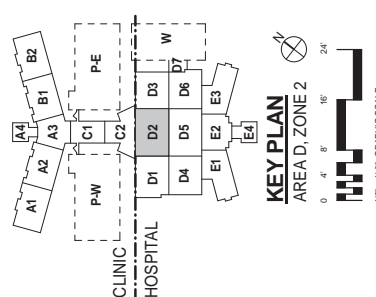


1/8" = 1'-0" GRAPHIC SCALE

[illegible]



A. AND 1-1/2" MV UP.



BUILDING IS FULLY SPRINKLERED

[illegible]

[illegible]

CONSULTANTS:

Professional Seals:



ARCHITECT/ENGINEERS:



A JOINT VENTURE

145 Lincoln Avenue	1001 G Street NW, Suite 1000
Winter Park, Florida 32789	Washington, D.C. 20001
407 647 1039	202 654 9300

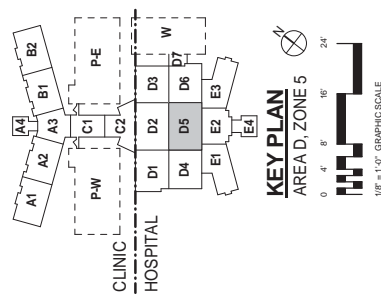
Drawing Title
HOSPITAL / CLINIC LEVEL 1, AREA D,
ZONE 5 MEDICAL GAS PLAN
BID ALTERNATE NO. 3

Melan Arshitz

Project Title
A NEW HOSPITAL FOR
VAMC ORLANDO, FLORIDA

PM1.1FD5-A
Page 3001 of 4322

BUILDING IS FULLY SPRINKLERED



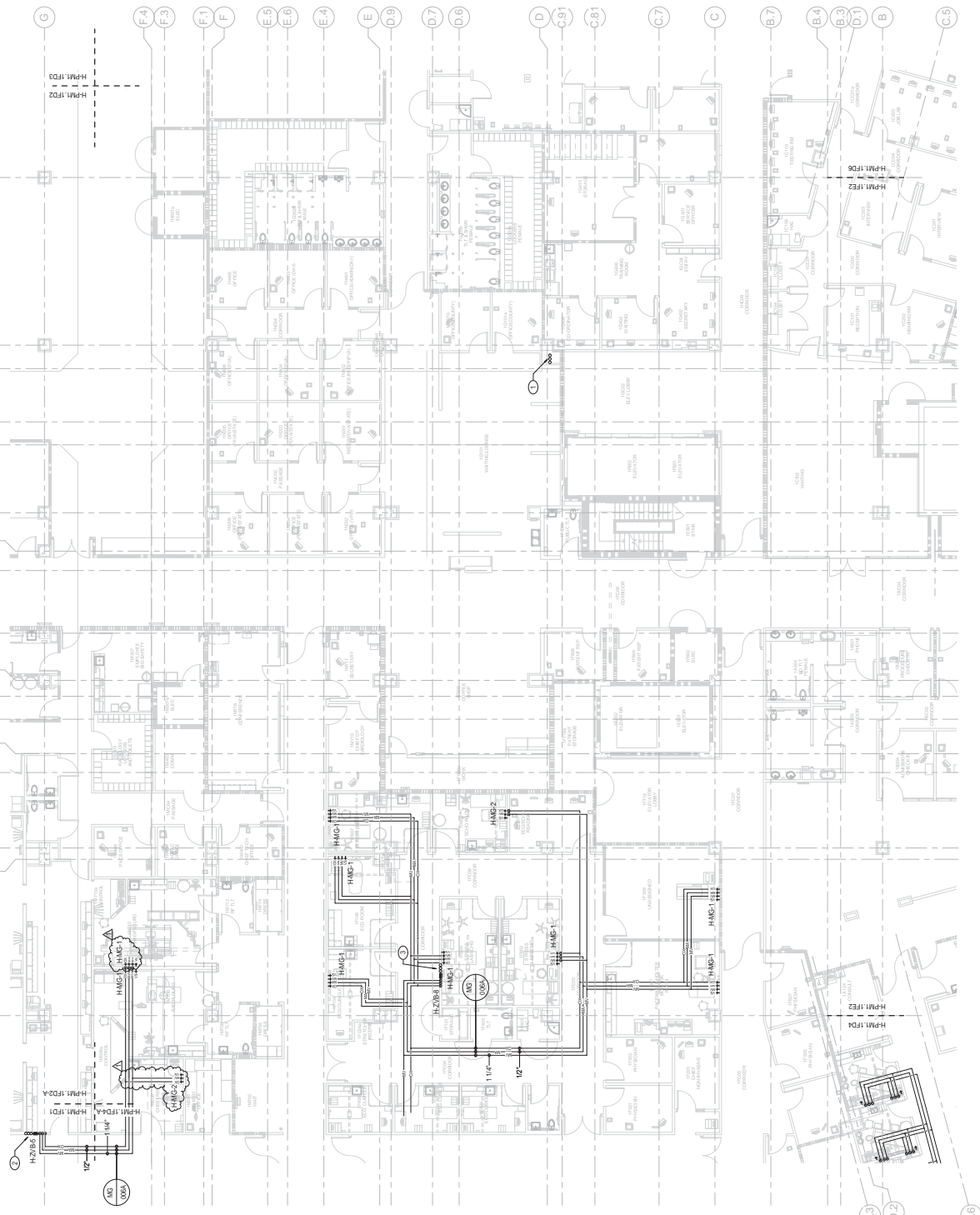
KEY PLAN

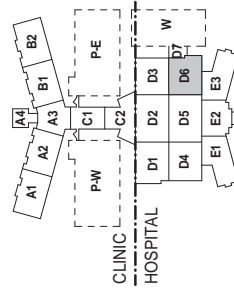
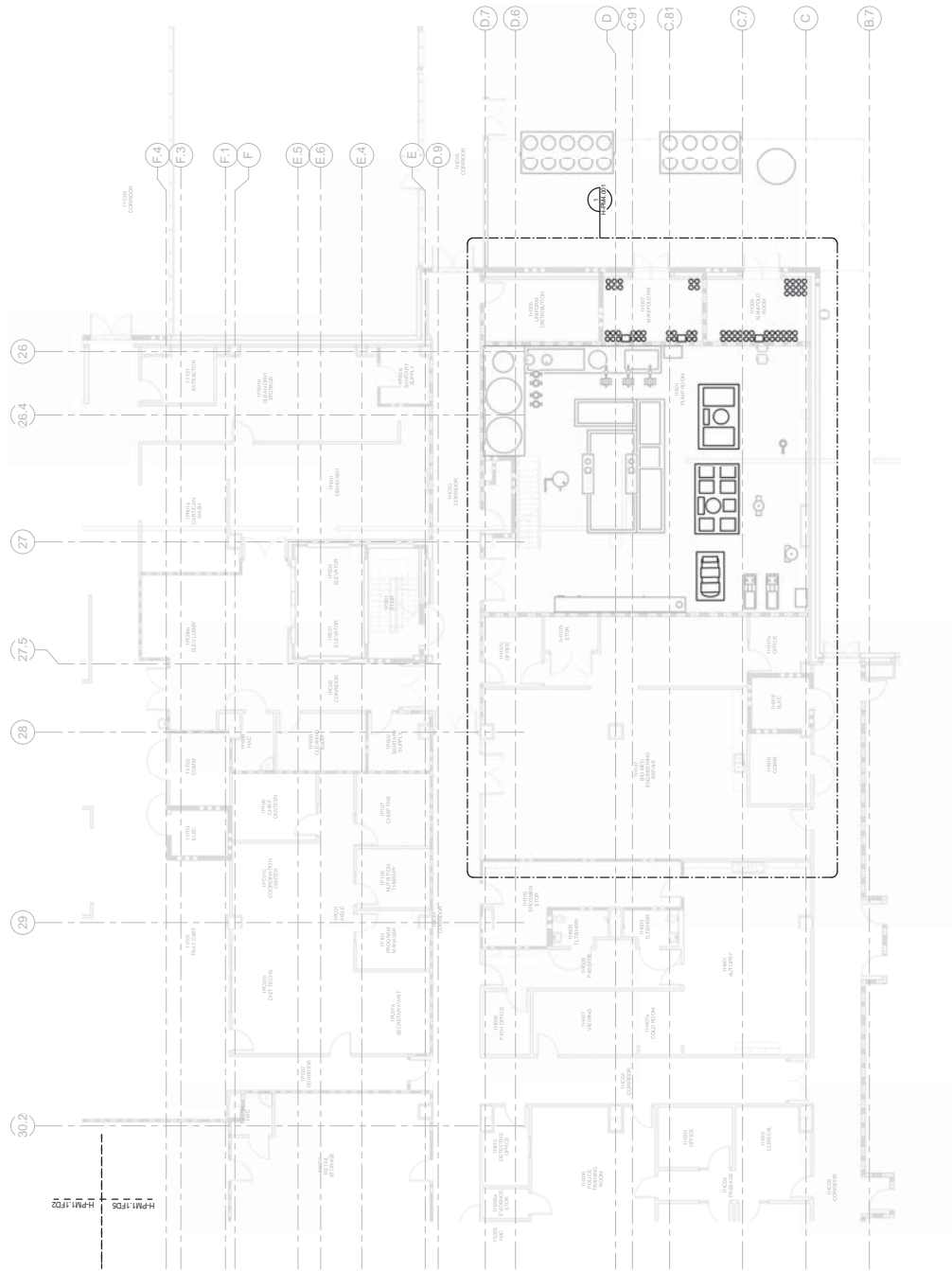
AREA D, ZONE 5

NOTES:

KEY NOTES: ○

- KEY NOTES:
- | | |
|---|----------------------------------|
| 1 | 2"OX, 1"MA, AND 4"MV UP AND DN. |
| 2 | 1/2"OX, 1/2"MA, AND 1-1/4"MV UP. |
| 3 | 1/2"OX 1/2"MA, AND 1-1/2"MV UP. |





KEY PLAN

AREA D, ZONE 6



1/8" = 1'-0" GRAPHIC SCALE

BUILDING IS FULLY SPRINKLERED

[illegible]