

0 1 2 3 4 5 6 7 8 9

A  
three inches - one foot

B  
one and one-half inches - one foot

C  
one inch - one foot

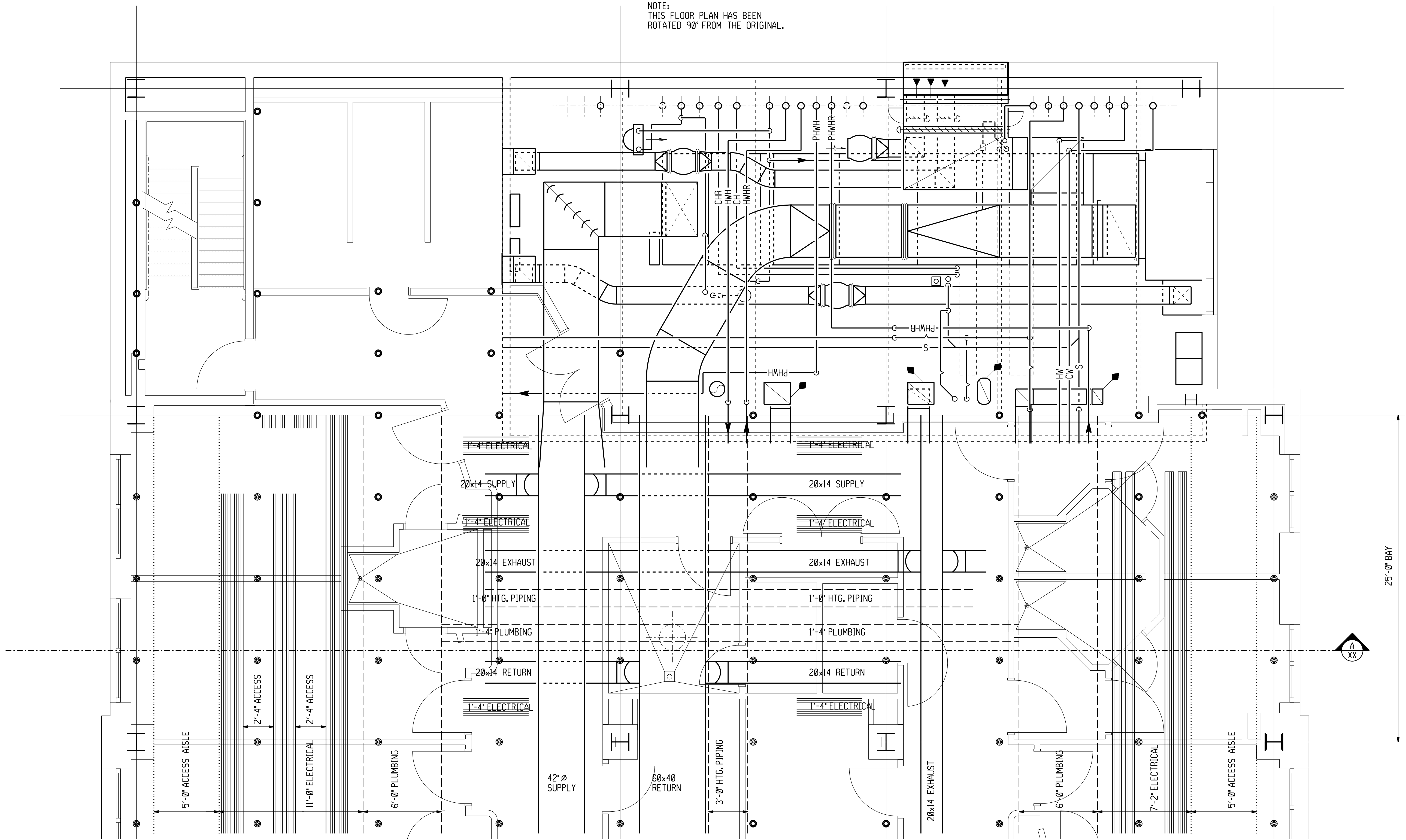
D  
three-quarters inch - one foot

E  
one-half inch - one foot

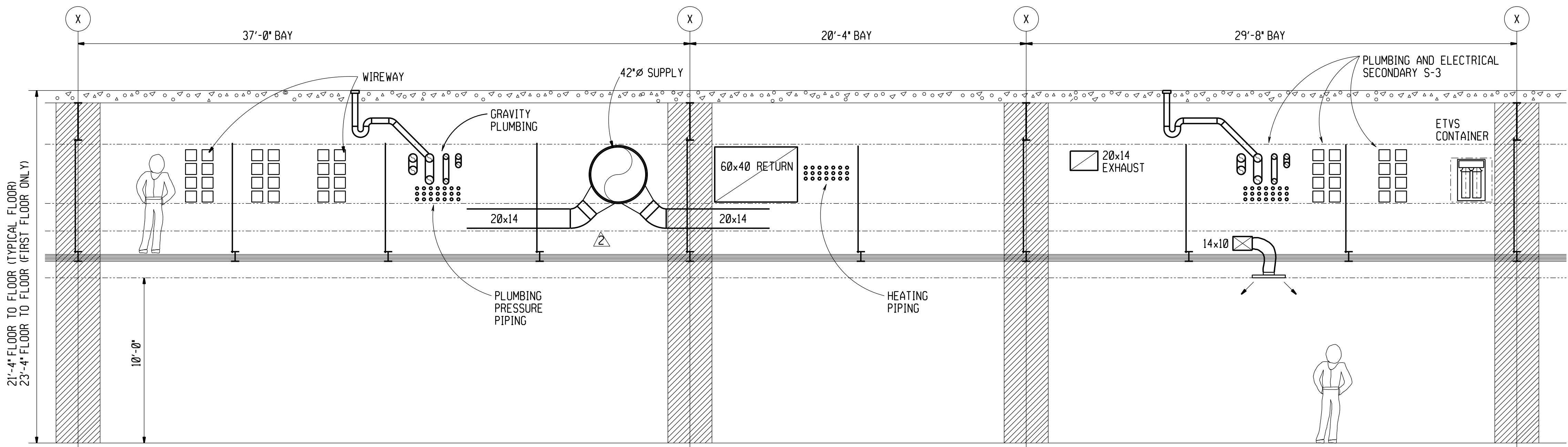
F  
three-eighths inch - one foot

G  
one-quarter inch - one foot

H  
one-eighth inch - one foot



PLAN



SECTION A-A

EXISTING SHEET - FOR  
REFERENCE ONLY

- NOTES:
1. SEE DRAWING M0-4 FOR DRAWING SHOWING THE TYPICAL FLOOR TO FLOOR HEIGHT FOR THE FIRST FLOOR.
  2. IN GENERAL, THE ETVS SYSTEM TRACKS HAVE BEEN ROUTED TO CLEAR DUCT AND PIPING SYSTEMS IN THE S-3 ZONE. REFER TO THE ARCHITECTURAL INTERSTITIAL SPACE PLANS (DRAWING SERIES A3) FOR ETVS, PNEUMATIC TRASH AND PNEUMATIC LINEN COLLECTION SYSTEM ROUTING REQUIREMENTS.
  3. IN GENERAL, PLUMBING GRAVITY DRAINAGE LINES RUN IN THE S-2 ZONE WHILE IN THE STRUCTURAL BAY OF THEIR ORIGIN AND UNTIL REQUIRED TO DROP UNDER THE STRUCTURE.
  4. ON THE NURSING TOWER AND PSYCHIATRIC TOWERS, THE PLUMBING AND ELECTRICAL TRADES ARE ALLOCATED PRIMARY AND SECONDARY S-3 ZONES TO ALLOW THE MOST DIRECT SERVICE TO PATIENT ROOM PBBU'S AND TOILET ROOM PLUMBING CHASES.
  5. REFER TO HVAC FLOOR PLANS FOR ADDITIONAL EXHAUST DUCTWORK S-3 REQUIREMENTS.

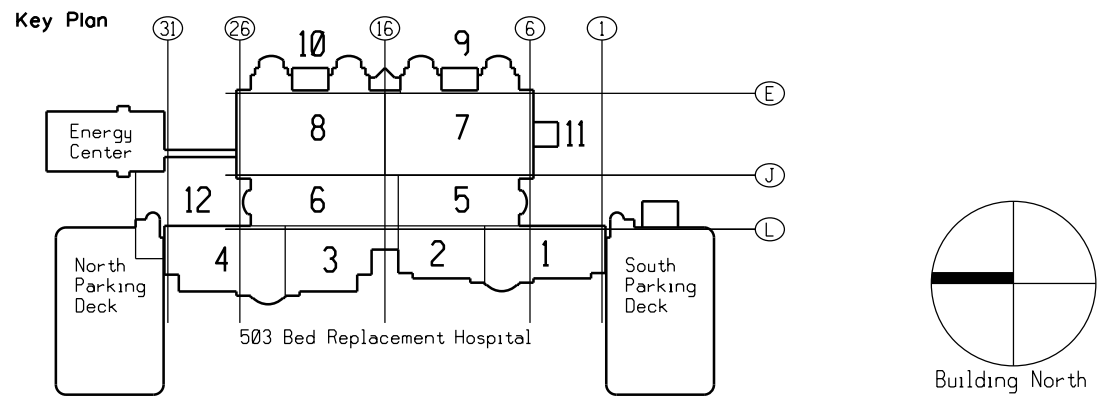
- (S1) 9/4" FLOOR SLAB  
(S2) STRUCTURAL STEEL  
2'-6"  
(S3) 3'-6 3/4" MAIN DISTRIBUTION  
(S4) 1'-8" BRANCH DISTRIBUTION  
(S5) 1'-5" LATERAL DISTRIBUTION  
(S6) 5" INTERSTICE PLATFORM  
(S7) 1'-0" CEILING CAVITY

Revisions	Date

FULLY PROTECTED BY AUTOMATIC SPRINKLER SYSTEM  
FINAL SUBMISSION  
NOT FOR CONSTRUCTION

SH&G Project No. 4999L

**SH&G**  
Smith, Hinchman & Grylls Associates, Inc.  
Architects Engineers Planners  
455 West Fort Street, Detroit, Michigan 48226  
313/964-3000



Drawing Title  
TYPICAL INTERSTICE  
DISTRIBUTION ZONING-  
NURSING TOWERS  
Scale: 1/4"=1'-0"  
Approved: Area Project Manager

Project Title  
503 BED REPLACEMENT  
HOSPITAL  
Building Number  
100  
Location  
Detroit, Michigan  
Date  
12-29-91  
Project No.  
553-080  
DRAWING NO.  
M0-5  
Dwg. 01

Veterans  
Administration