

INTERSTITIAL RACEWAY SYSTEM

NORMAL POWER

NORMAL POWER	277/480V.	1
NORMAL POWER	120/208V.	NA, NB ...
NORMAL POWER	480V.	NO1
NORMAL POWER	120/208V	DA

ESSENTIAL POWER

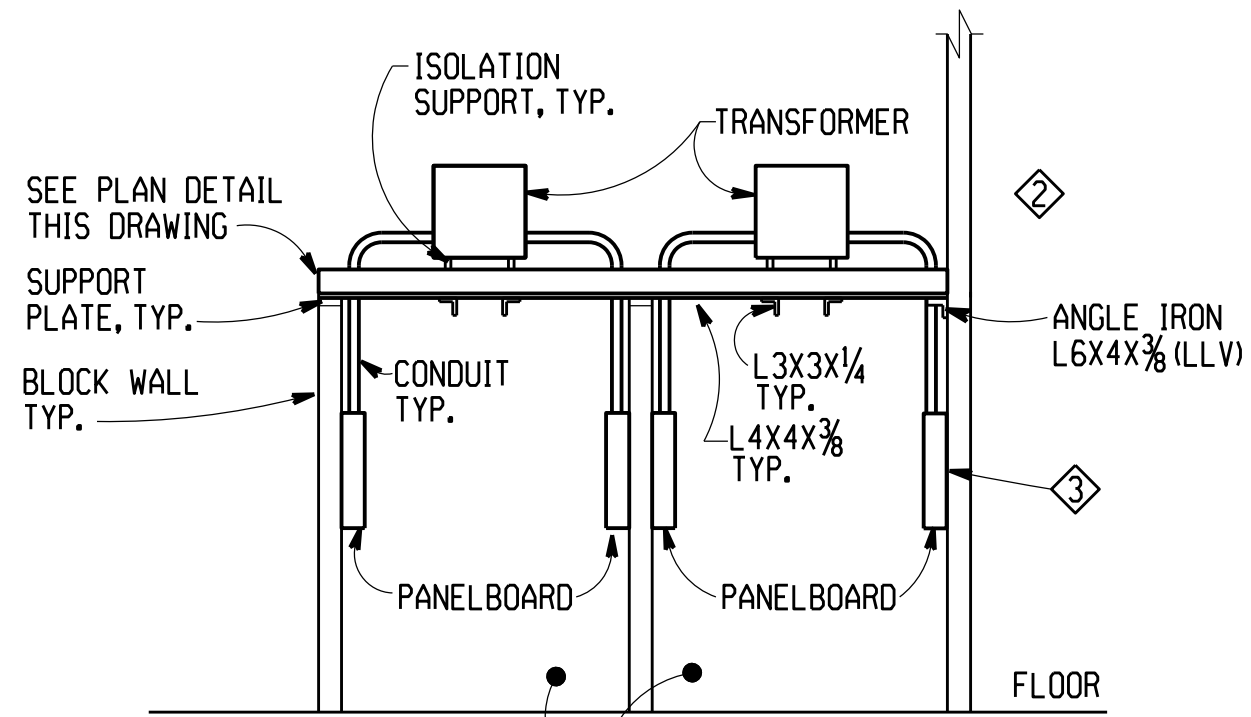
CRITICAL POWER	277/480V.	C1
CRITICAL POWER	120/208V.	CA, CB ...
LIFE SAFETY POWER	277/480V.	L1
EQUIPMENT POWER	120/208V.	E1
EQUIPMENT POWER	480V.	EA

COMMUNICATION

TELEPHONE	T
FIRE ALARM	FA
NURSE CALL SYSTEM	NS
MISC. SIGNAL SYSTEM AND MATV	M
WHERE TV WIREWAY DOESNT EXIST	
MATV	TV

NOTES: (PERTAINING TO ALL INTERSTICES)

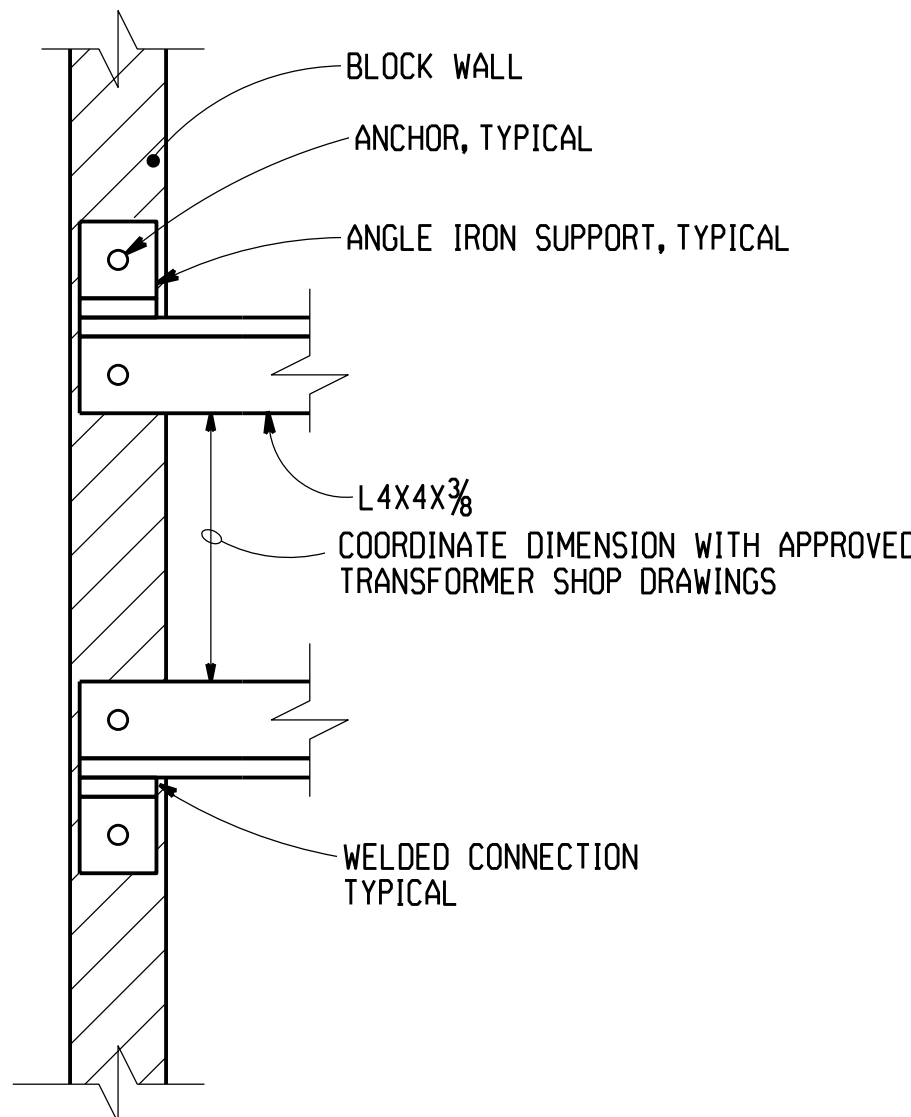
- ALL WIREWAYS ARE 4" X 4" UNLESS OTHERWISE NOTED.
- WIREWAYS NOTED BY (+) ARE 2 1/2" X 2 1/2"
- PROVIDE NAMEPLATES ON ALL RACEWAYS RUN IN THE INTERSTITIAL SPACE IDENTIFYING THE SYSTEM SERVED AS DENOTED ON ABOVE SCHEDULES. NAMEPLATES SHALL BE LOCATED AT 50'-0" O.C. INTERVALS OR LESS AND SHALL BE PLACED SO THEY CAN BE EASILY READ.
- PROVIDE FIREPROOFING WHEREVER A WIREWAY PENETRATES A FIREWALL.
- WIREWAY SHALL BE SUPPORTED AS INDICATED AND AS REQUIRED BY THE N.E.C.
- ON INTERSTICE LEVELS, MOUNT EXIT LIGHTS AT AN ELEVATION TO PROVIDE MAXIMUM VISIBILITY ALONG PATH OF EGRESS, COORDINATE IN FIELD.
- ON INTERSTICE LEVELS, PROVIDE TYPE "F150" FLUORESCENT LIGHT FIXTURES SURFACE STEEL, WHERE FIXTURES CANNOT BE MOUNTED TO STRUCTURAL STEEL (SUCH AS WALKWAY AREAS), PROVIDE TYPE "F15C" FIXTURES PENDANT MOUNTED AT THE SAME ELEVATION AS TYPE "F150" FIXTURES.
- WHERE MORE THAN 30 CURRENT - CARRYING CONDUCTORS WILL BE INSTALLED IN A WIREWAY, PROVIDE THAT WIREWAY WITH A CENTER DIVIDER.
- PROVIDE ALL SUPPORT BRACKETS INDICATED ON SECTION VIEWS OF WIREWAYS OF ALL E5 SERIES DRAWINGS.



TYPICAL TRANSFORMER SUPPORT DETAIL

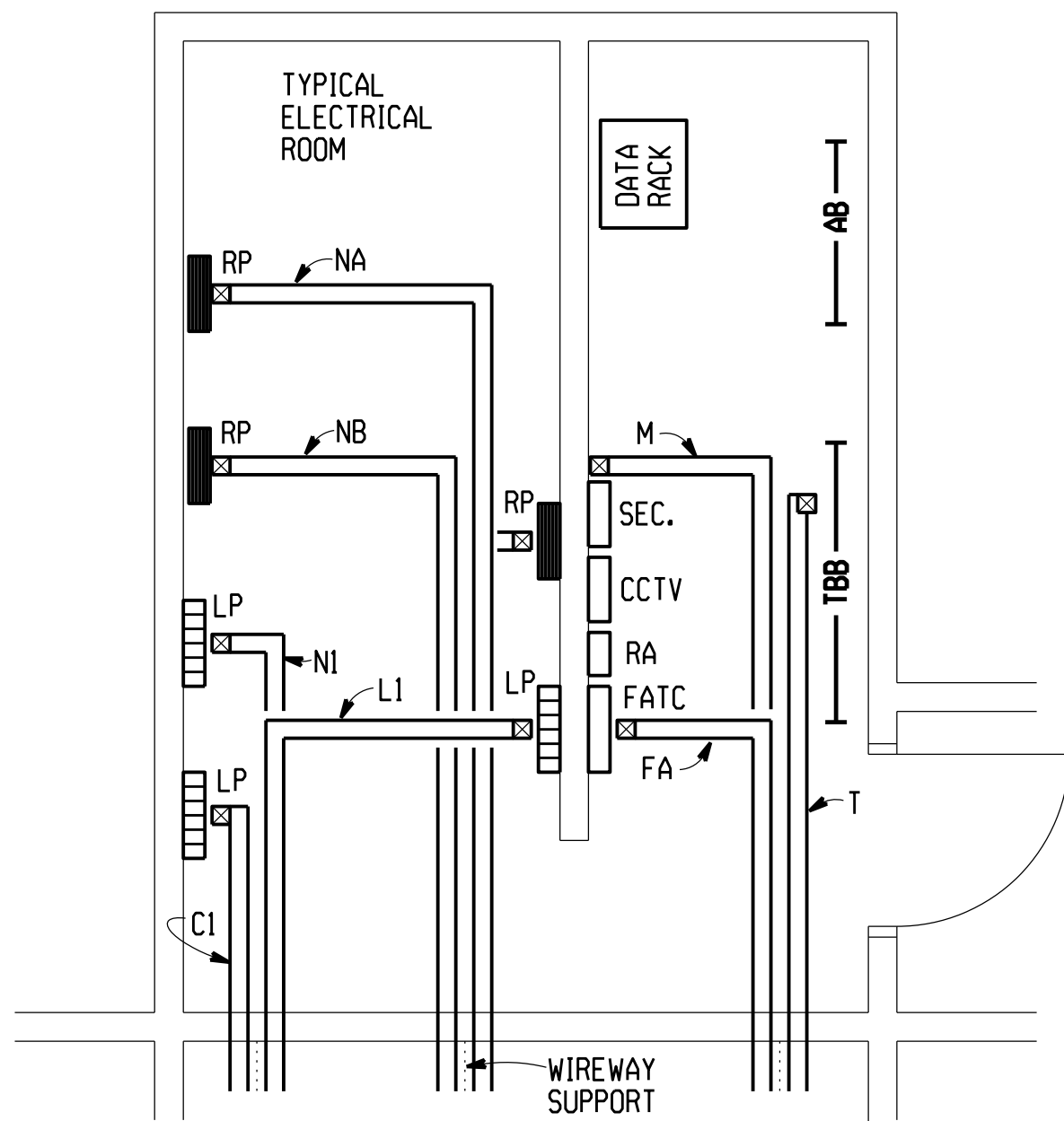
NOT TO SCALE

- NOTES: 1. THIS DETAIL IS TYPICAL FOR ALL 30 KVA & 45 KVA TRANSFORMERS IN ALL ELECTRICAL CLOSETS.
2. PROVIDE FLEX CONNECTION, PER SPECIFICATIONS.
3. WHERE REQUIRED, MOUNT PANELBOARDS AWAY FROM WALL ON MISCELLANEOUS STEEL TO ALLOW FOR CONDUIT RISERS.



TYPICAL TRANSFORMER SUPPORT PLAN DETAIL

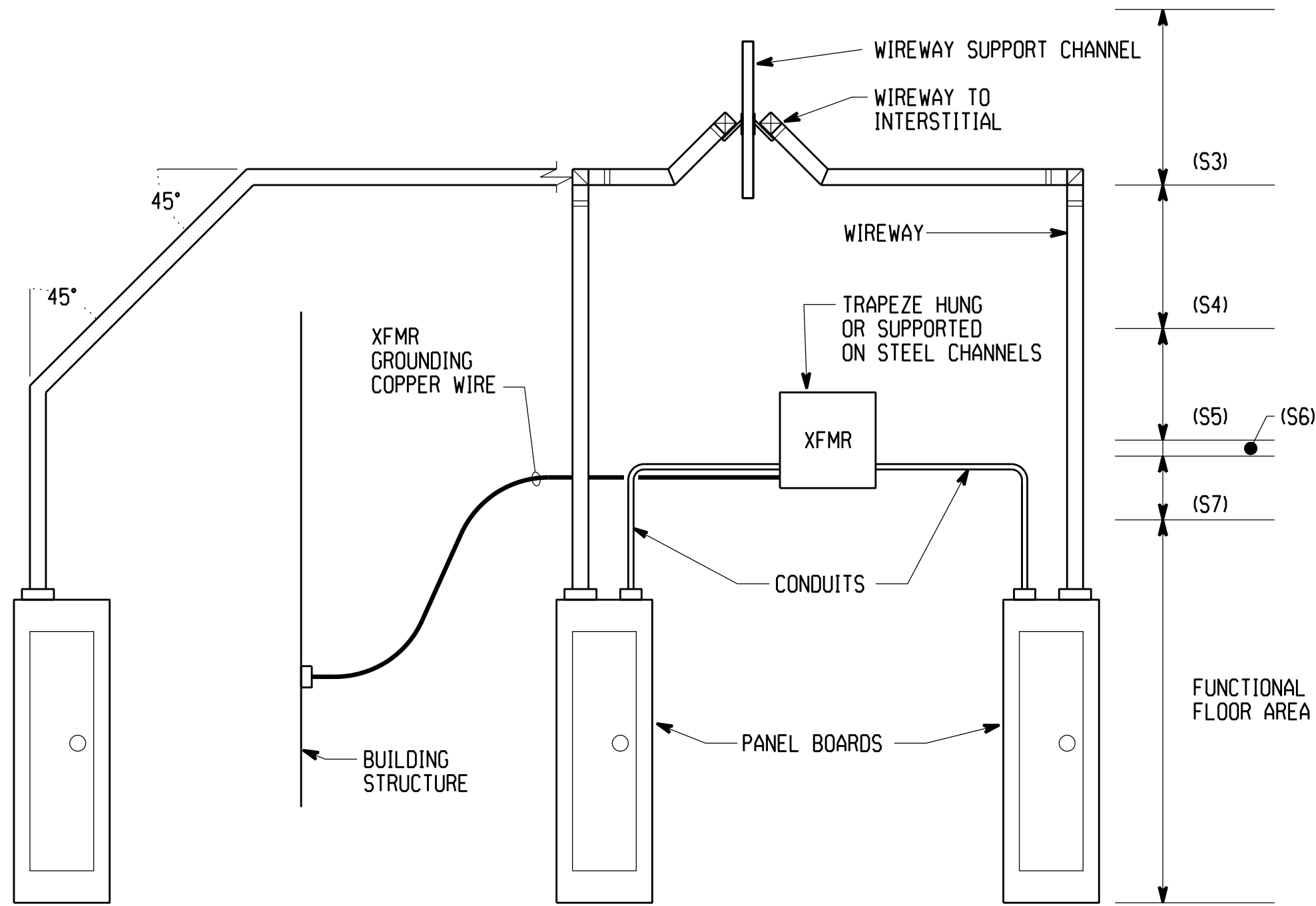
NOT TO SCALE



TYPICAL ELEC. ROOM WIREWAY DISTRIBUTION

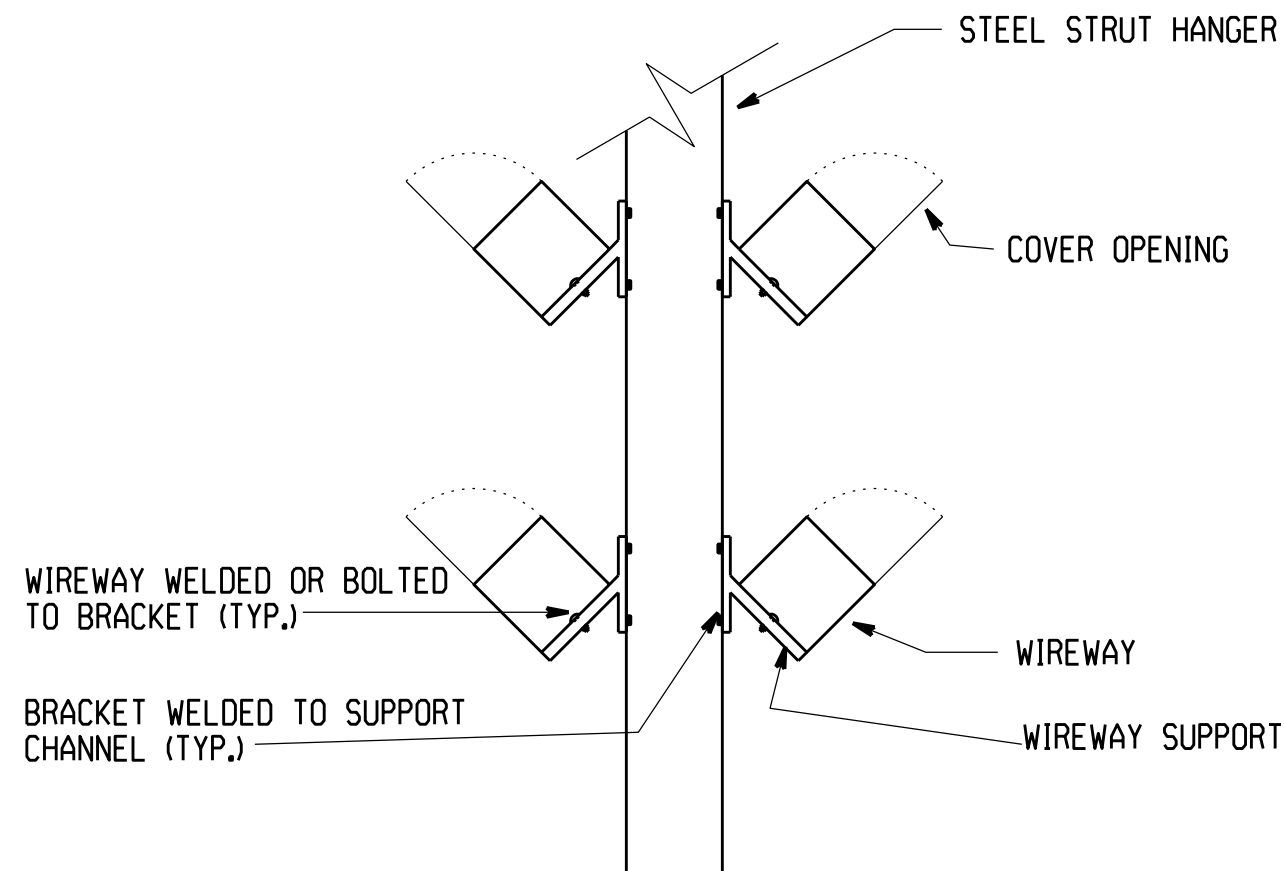
N.T.S.

- NOTES: 1. THE ABOVE DETAIL REPRESENTS ONE TYPICAL ELECTRICAL ROOM LAYOUT. PROVIDE SIMILAR WIREWAY DISTRIBUTION FOR ALL ELECTRICAL ROOMS.
2. ALL WIREWAYS INDICATED ON INTERSTICE LEVEL ARE TO BE CONNECTED TO APPROPRIATE PANEL OR SYSTEM IN ELECTRICAL ROOMS.



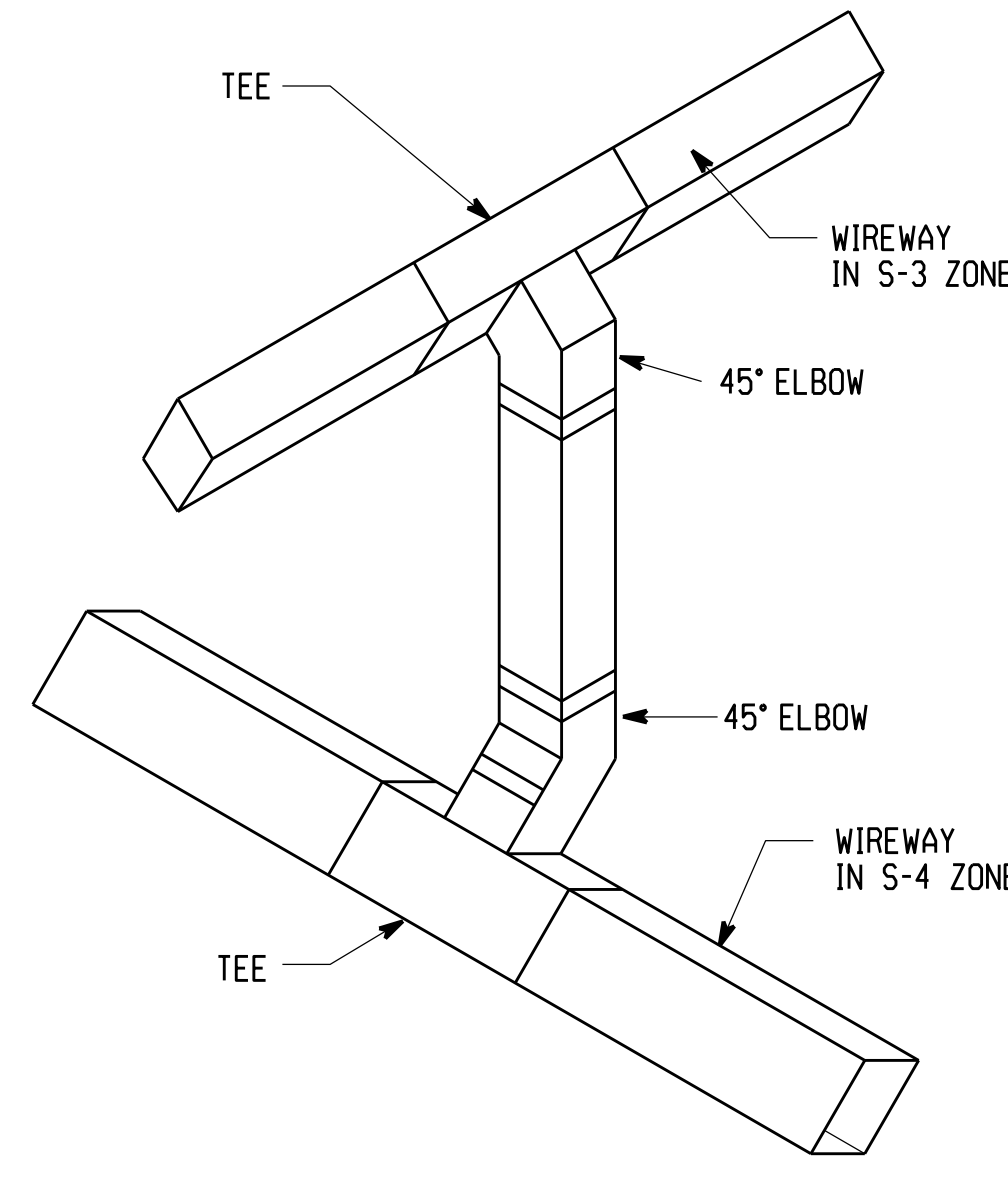
TYPICAL WIREWAY CONNECTION IN ELECTRICAL ROOM

N.T.S.



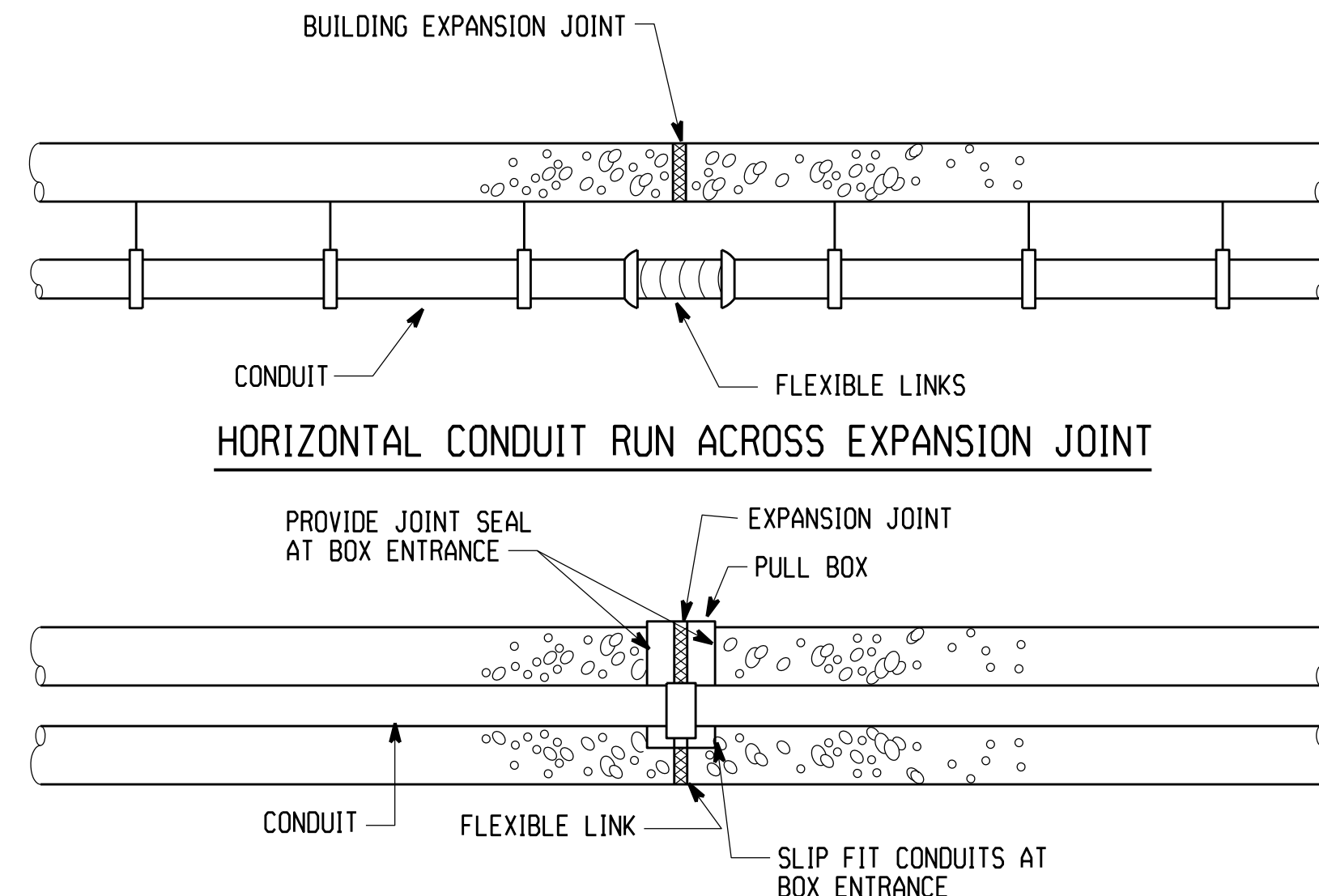
WIREWAY SUPPORT IN S-3 & S-4 ZONE

N.T.S.



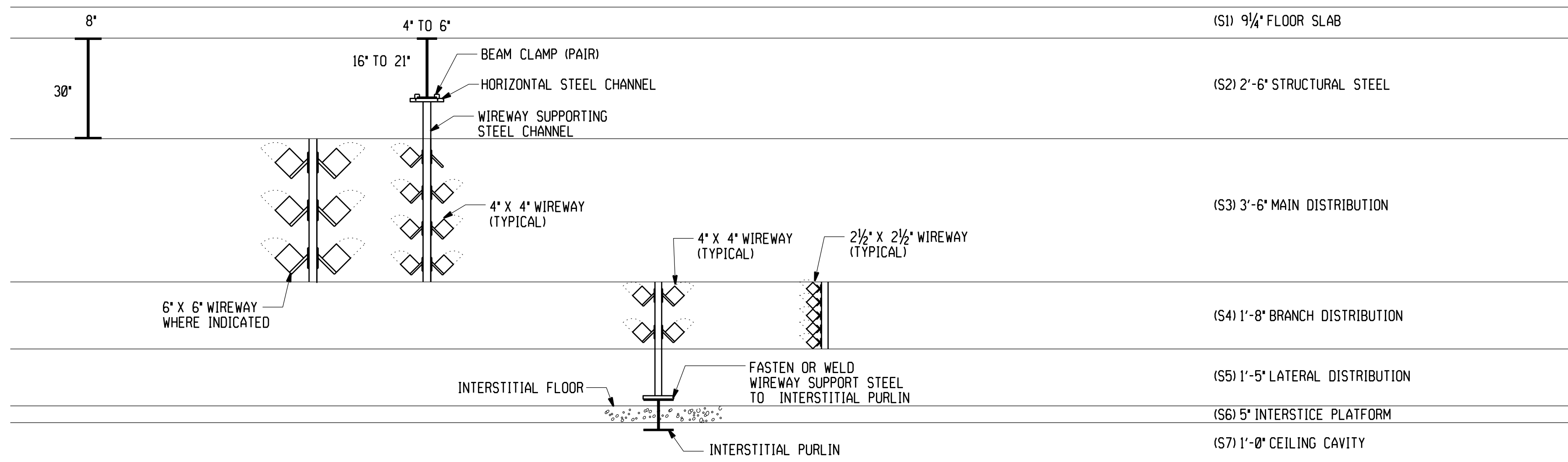
WIREWAY TRANSITION FROM S-3 ZONE TO S-4 ZONE

N.T.S.



CONCEALED CONDUIT CROSSING EXPANSION JOINT

N.T.S.



TYPICAL SUPPORTING SECTION OF SUBZONES

1/4" = 1'-0"

EXISTING SHEET - FOR REFERENCE ONLY

<p>Revisions</p> <p>Date</p>		<p>FULLY PROTECTED BY AUTOMATIC SPRINKLER SYSTEM</p> <p>FINAL SUBMISSION</p> <p>NOT FOR CONSTRUCTION</p>		<p>SH&amp;G</p> <p>Smith, Hinchman &amp; Grylls Associates, Inc.</p> <p>Architects Engineers Planners</p> <p>455 West Fort Street, Detroit, Michigan 48226</p> <p>313/964-3000</p>		<p>Key Plan</p>		<p>Drawing Title</p> <p>INTERSTITIAL SPACE DETAILS &amp; SECTIONS</p> <p>Scale: AS NOTED</p> <p>Approved: Area Project Manager</p>		<p>Project Title</p> <p>503 BED REPLACEMENT HOSPITAL</p> <p>Building Number</p> <p>100</p> <p>Location</p> <p>Detroit, Michigan</p>		<p>Date</p> <p>4/29-91</p> <p>Project No.</p> <p>553-080</p> <p>DRAWING NO.</p> <p>E5-3</p> <p>Dwg. Of</p>		<p>Veterans Administration</p>	
------------------------------	--	--	--	--	--	-----------------	--	--	--	---	--	--	--	--------------------------------	--