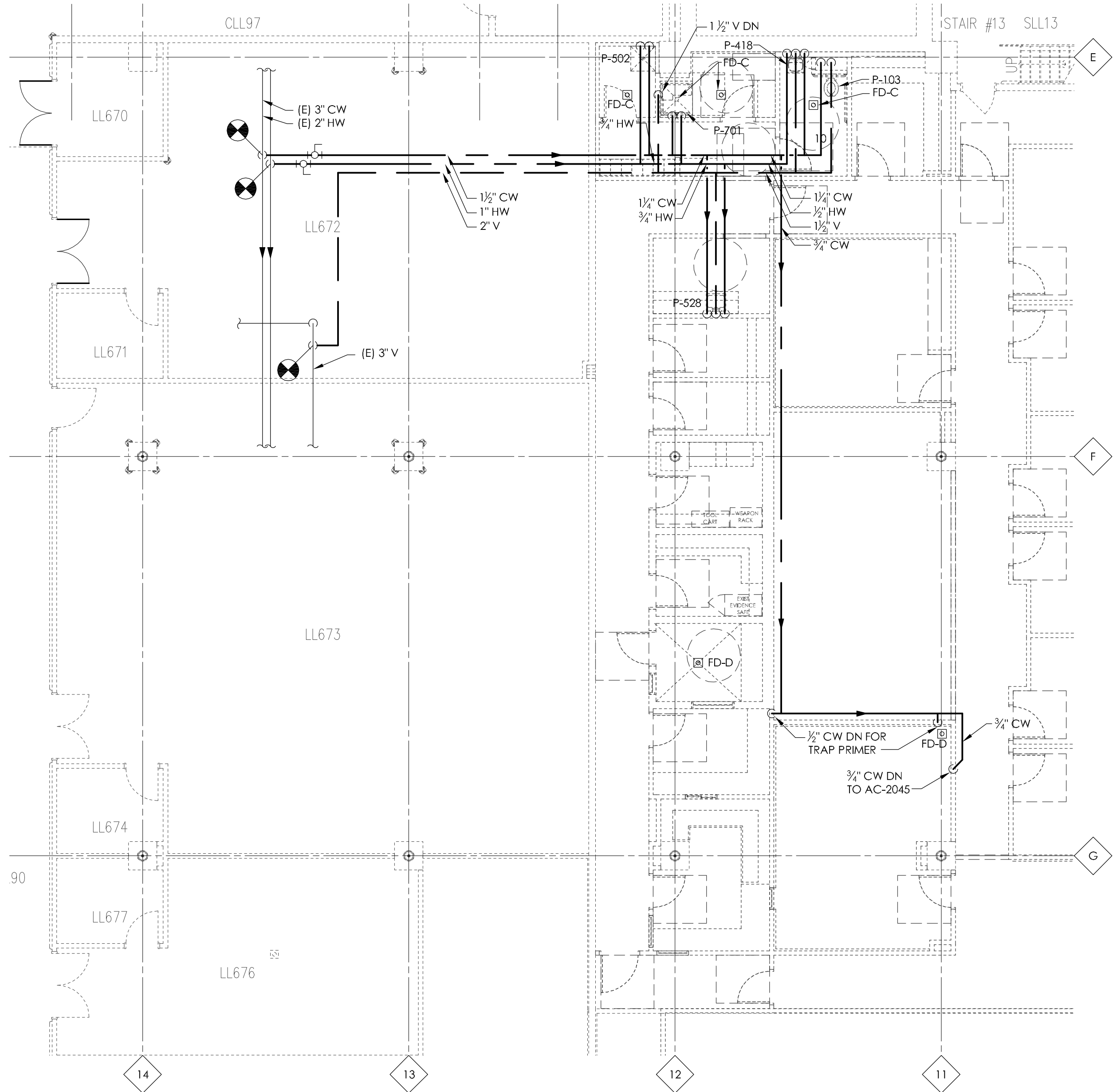


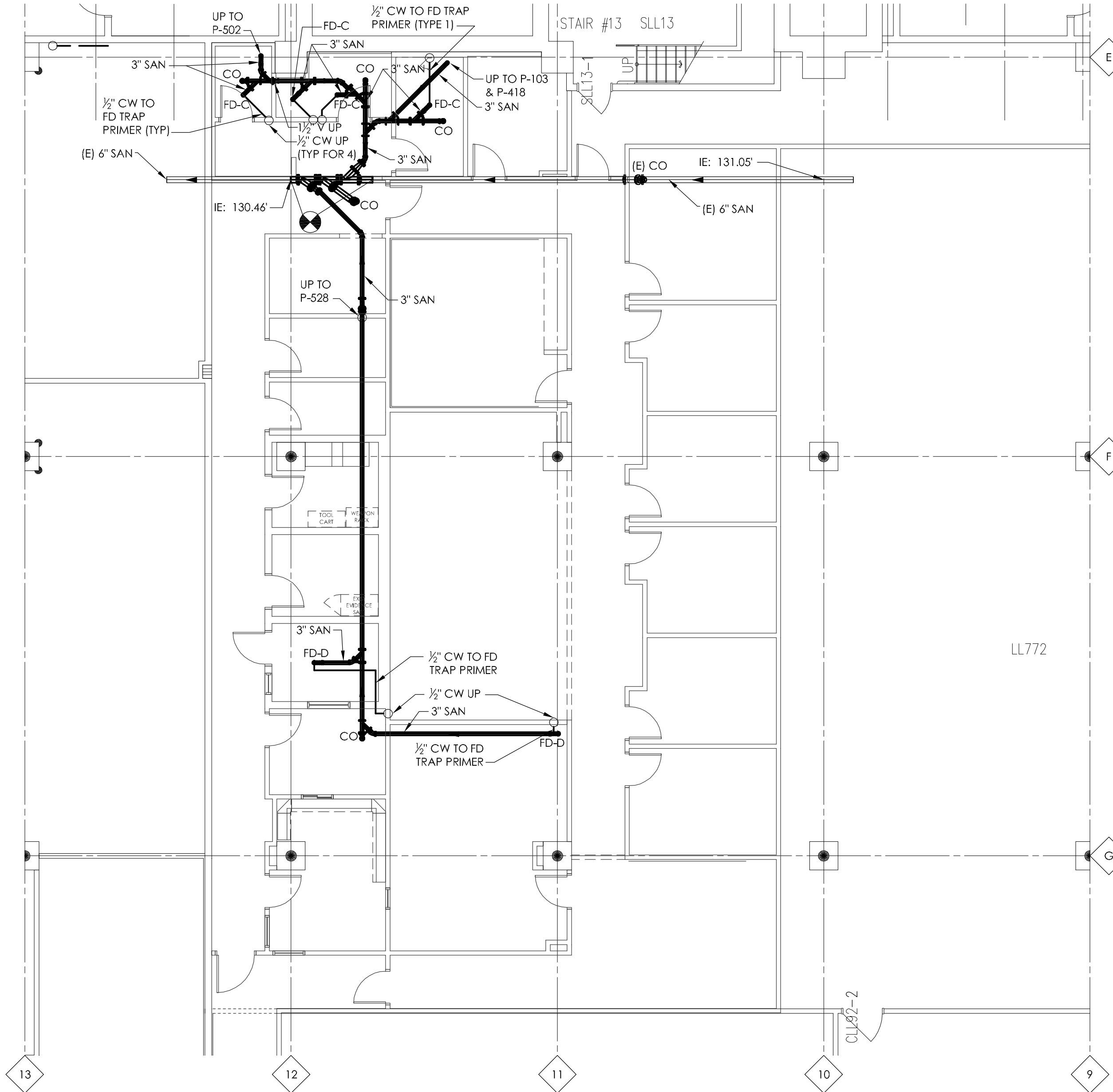
three inches = one foot  
one and one half inches = one foot  
one inch = one foot  
three quarters inch = one foot  
one half inch = one foot  
three eighths inch = one foot  
one quarter inch = one foot  
one eighth inch = one foot



ENLARGED PLAN  
PLUMBING - LOWER LEVEL  
1/8" = 1'-0"

NOTES:

1. NOT ALL EXISTING PLUMBING IS SHOWN. REFER TO REFERENCE SHEET P5-L.7 FOR EXISTING CONDITIONS.
2. NOT ALL ABOVEGROUND TRAP PRIMER SUPPLY PIPING IS SHOWN. COORDINATE WITH UNDERGROUND PLAN TO PROVIDE REQUIRED PIPING.
3. REFER TO SHEETS M-001 AND M-002 FOR GENERAL NOTES, ABBREVIATIONS AND SYMBOLS. REFER TO SHEET PL-500 FOR FIXTURE CONNECTION SCHEDULE.



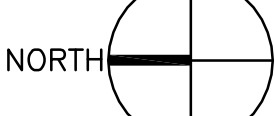
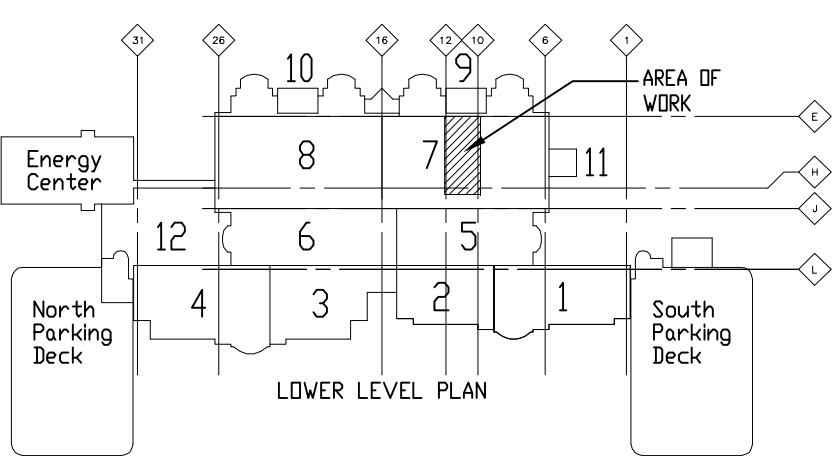
ENLARGED PLAN  
PLUMBING - UNDERGROUND  
1/8" = 1'-0"

NOTES:

1. FINISHED FLOOR ELEVATION: 135'-2"
2. SLOPE PIPING 3" AND SMALLER AT 1/4 PER FOOT IN THE DIRECTION OF FLOW. SLOPE PIPING LARGER THAN 3" AT 1/8 PER FOOT IN DIRECTION OF FLOW.
3. REFER TO SHEETS M-001 AND M-002 FOR GENERAL NOTES, ABBREVIATIONS AND SYMBOLS. REFER TO SHEET PL-500 FOR FIXTURE CONNECTION SCHEDULE.
4. TRAP PRIMERS ARE TYPE 2, UNLESS NOTED OTHERWISE.

Revisions	Date
ISSUE 006 - CD BID	01.20.11
ISSUE 005 - CD OWNER REVIEW	12.17.10
ISSUE 004 - DESIGN DEVELOPMENT RECORD	11.12.10
ISSUE 003 - DESIGN DEVELOPMENT REVIEW	09.08.10

KEY PLAN



US DEPARTMENT OF  
VETERANS AFFAIRS  
JOHN D. DINGELL  
VA MEDICAL CENTER  
4646 JOHN R. STREET  
DETROIT, MI 48202

ARCHITECT/ENGINEERS:



**Albert Kahn Associates, Inc.**  
Albert Kahn Building  
7430 Second Ave.  
Detroit, Michigan 48202-2798  
Albert Kahn Associates, Inc. is a member of  
the Albert Kahn Family of Companies. © 2007  
ALBERT KAHN JOB # 0388-00.000

Drawing Title <b>ENLARGED PLANS - PLUMBING</b>
Approved Project Director <b>J. P. COLE</b>

Project Title <b>POLICE SERVICES RELOCATION</b>
Location <b>DETROIT, MICHIGAN</b>
Date <b>01-20-2011</b>
Checked <b>JPC</b>
Drawn <b>RAM / PME</b>

Project Number <b>553-11-108</b>
Building Number <b>100</b>
Drawing Number <b>PL-400</b>
Dwg. 22 of 50

Office of  
Construction  
and Facilities  
Management



FULLY SPRINKLERED