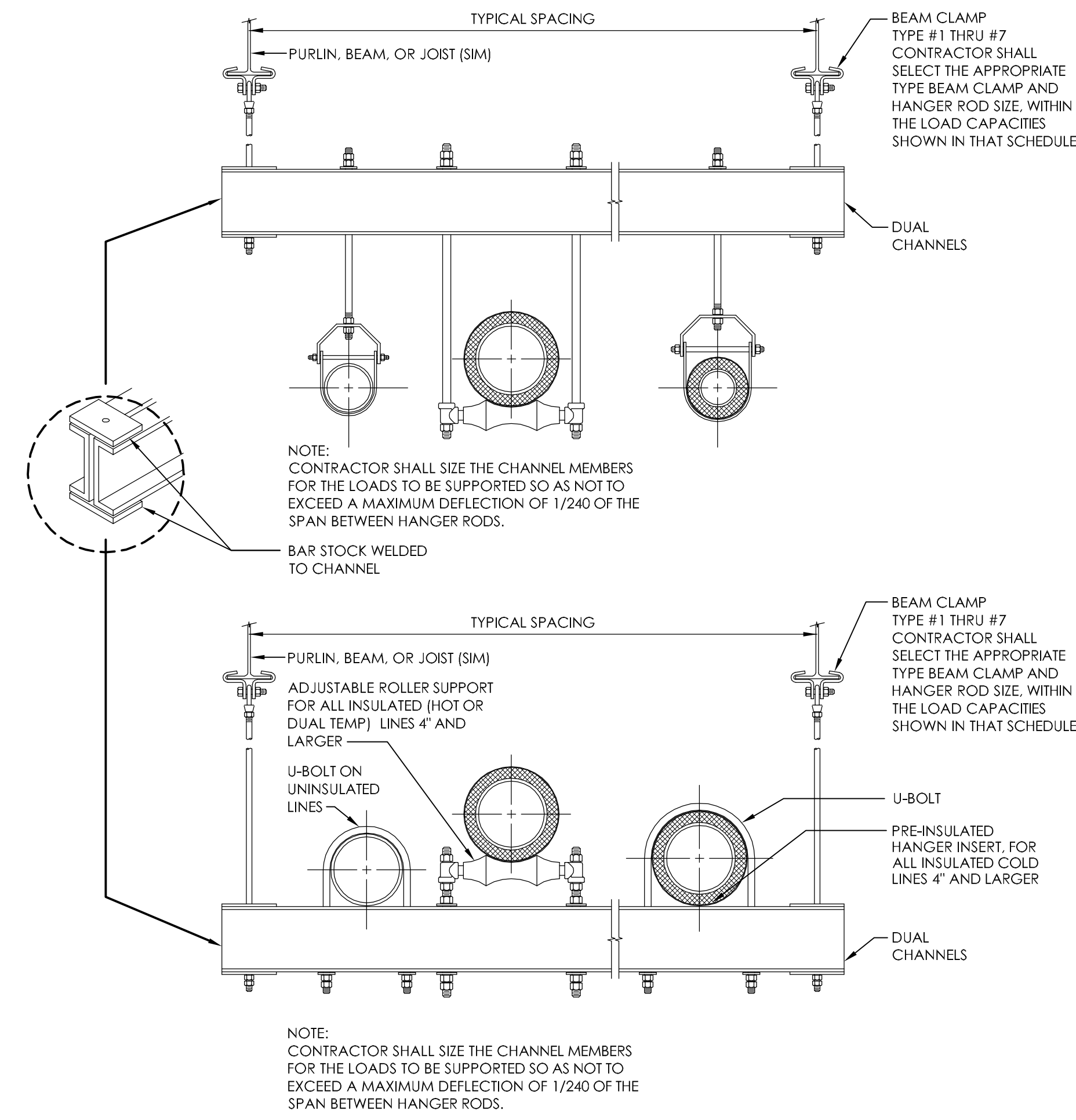
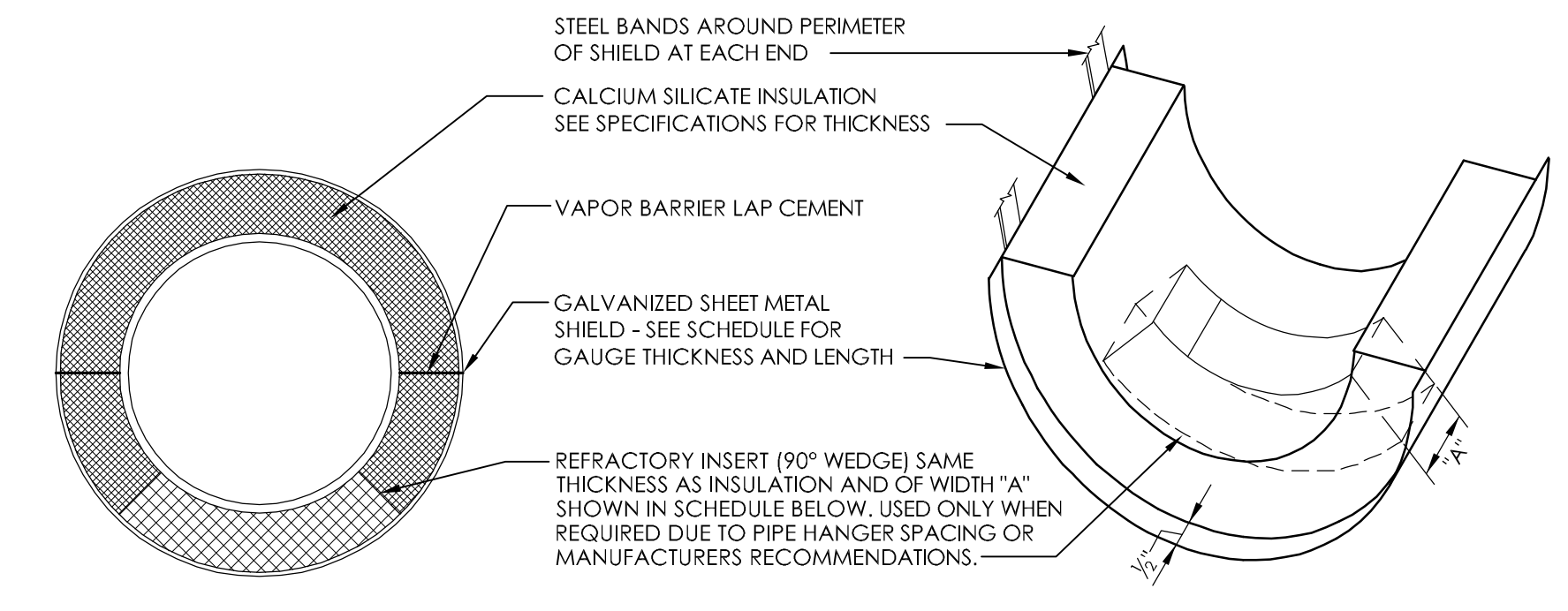
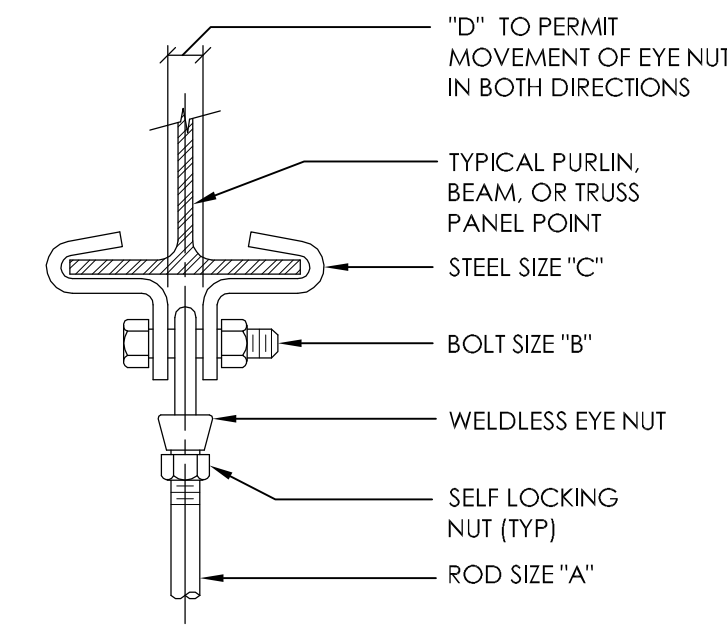


three inches = one foot
one and one half inches = one foot
one inch = one foot
one inch = one foot
three quarters inch = one foot
one half inch = one foot
one half inch = one foot
three eighths inch = one foot
one quarter inch = one foot
one eighth inch = one foot
one eighth inch = one foot



4 PIPE HANGER SCHEDULE
NOT TO SCALE

1 DETAIL OF BEAM CLAMP
NOT TO SCALE



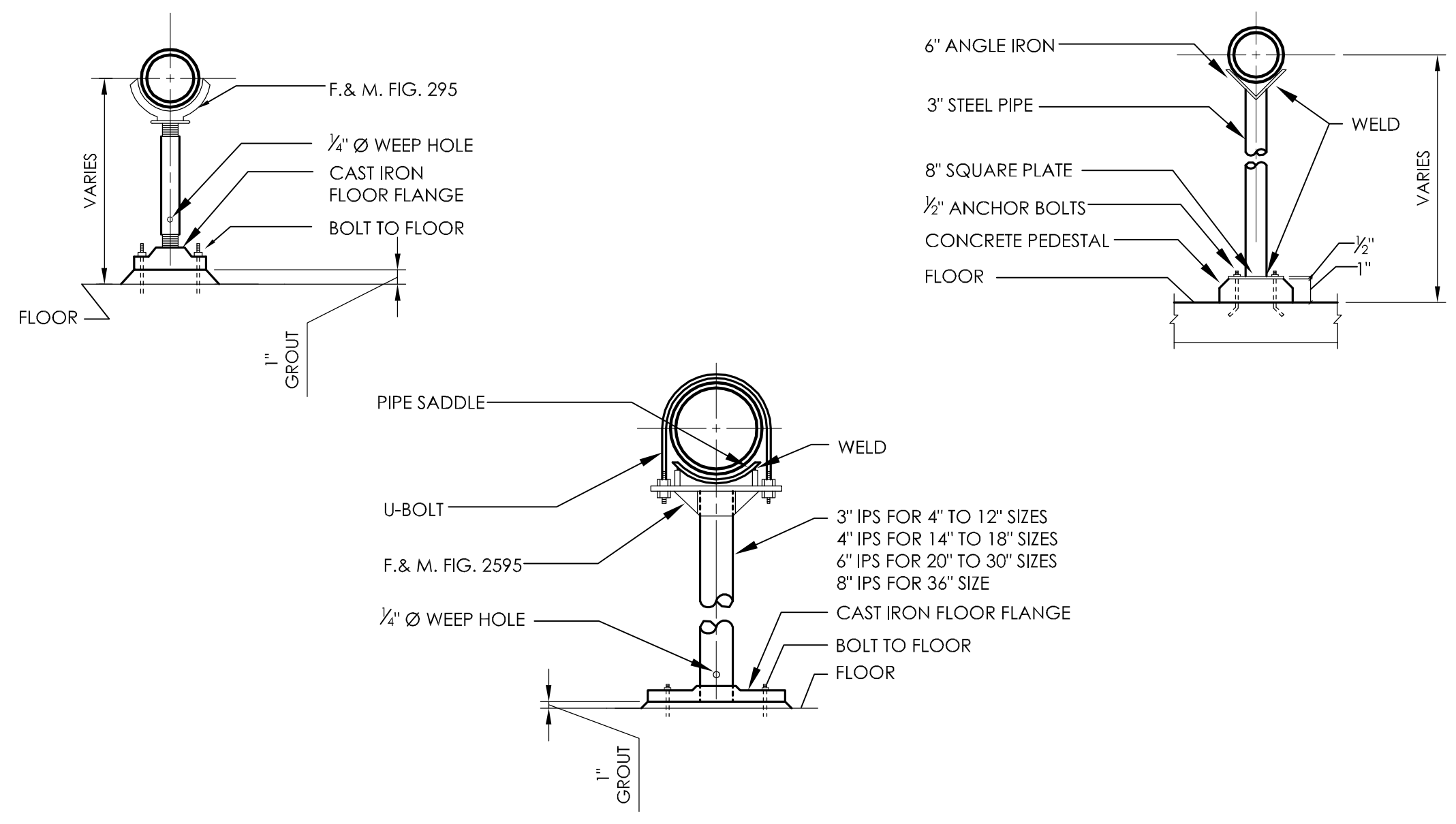
5 DETAIL OF PREINSULATED HANGER INSERT
NOT TO SCALE

SCHEDULE FOR SINGLE PIPE HANGERS 3/4" THRU 20"						
TYPE NO.	PIPE SIZE	"A"	"B"	"C"	"D"	MAXIMUM LOAD
1	3/4" THRU 2"	3/8"	3/8"	3/4" x 1 1/4"	3/8"	500#
2	2 1/2" THRU 3 1/2"	1/2"	1/2"	1 1/2" x 1 1/2"	1/2"	500#
3	4" AND 5"	3/8"	3/8"	3/4" x 1 1/2"	3/8"	500#
4	6"	3/4"	3/4"	3/4" x 2"	1"	1000#
5	8" THRU 12"	1/2"	1/2"	1 1/2" x 2"	1 1/2"	1000#
6	14" AND 16"	1"	1"	1 1/2" x 3"	1 1/2"	2000#
7	18" AND 20"	1 1/8"	1 1/8"	1 1/2" x 4"	1 3/4"	2000#

NOTE: SCHEDULED DATA MAY ALSO BE USED FOR TRAPEZE HANGER SELECTION WITH EACH ROD NOT TO EXCEED THE LOADS SHOWN IN THE MAXIMUM LOAD COLUMN.

2 SCHEDULE FOR SINGLE PIPE HANGERS 3/4" THRU 20"
NOT TO SCALE

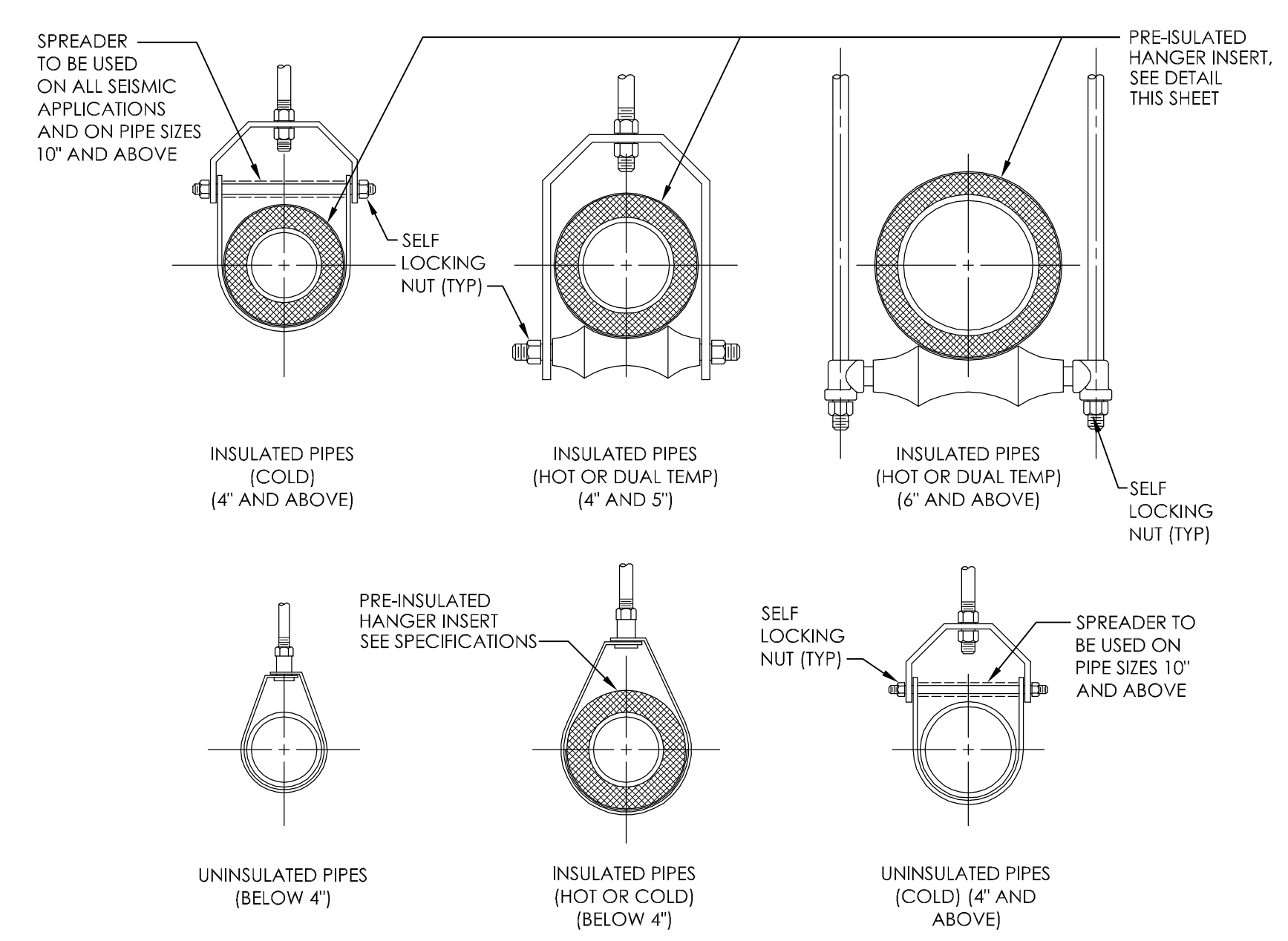
8 TRAPEZE SUPPORT
NOT TO SCALE



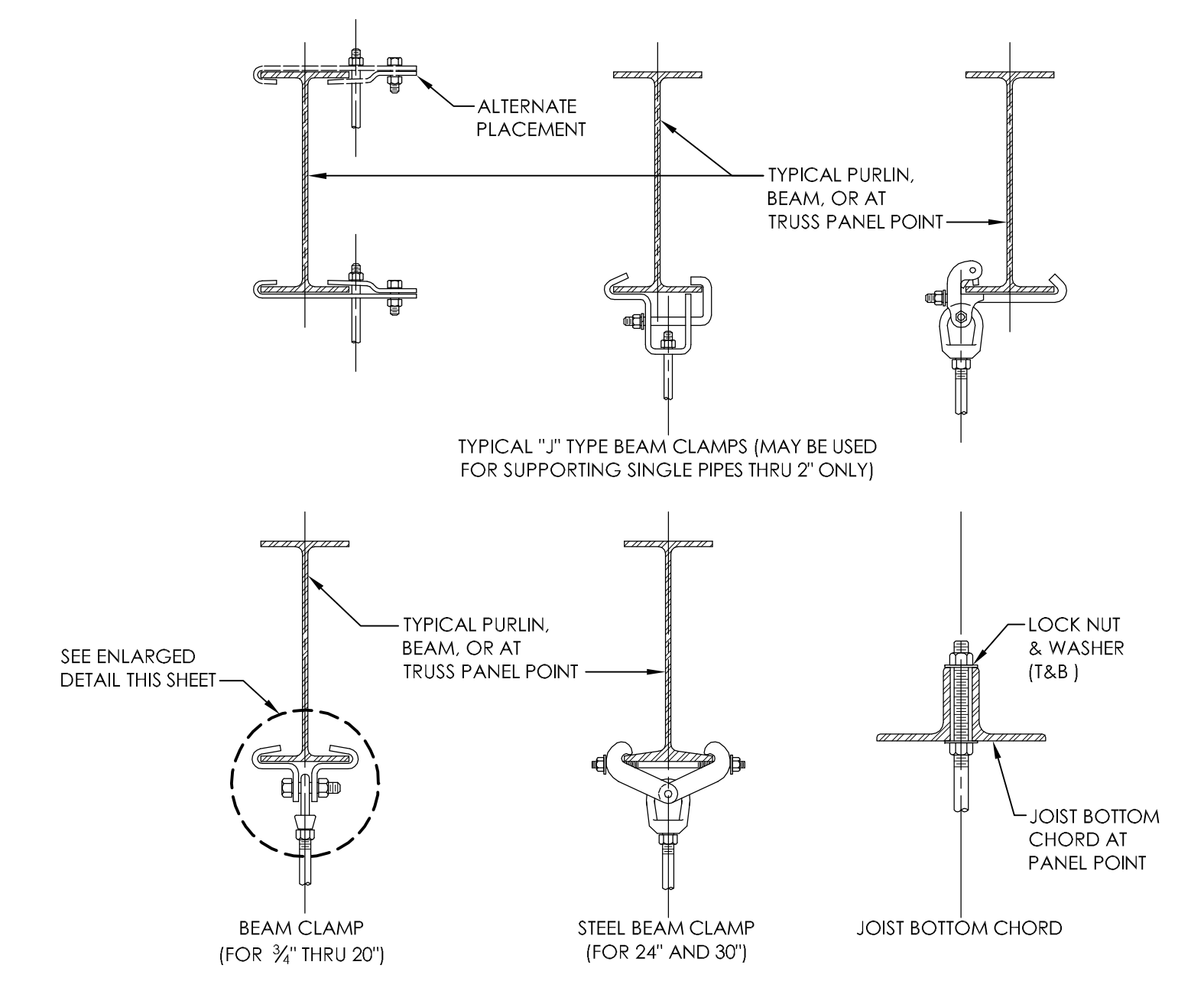
9 FLOOR STAND PIPE SUPPORTS
NOT TO SCALE

PREINSULATED HANGER INSERT SCHEDULE			
PIPE SIZE	SHIELD GAUGE AND LENGTH	INSERT WIDTH "A"	
		COLD LINES	HOT OR DUAL TEMP. LINES
4" THRU 6"	20 GA - 6" LG	4"	4"
8" AND 10"	16 GA - 9" LG	4"	4"
12" THRU 18"	16 GA - 12" LG	4"	4"
20", 24", AND 30"	16 GA - 18" LG	4"	4"

6 PREINSULATED HANGER INSERT SCHEDULE
NOT TO SCALE



7 DETAIL OF PIPE HANGERS
NOT TO SCALE



3 DETAIL OF BUILDING ATTACHMENTS
NOT TO SCALE

ISSUE 006 - CD BID
ISSUE 005 - CD OWNER REVIEW
ISSUE 004 - DESIGN DEVELOPMENT RECORD
ISSUE 003 - DESIGN DEVELOPMENT REVIEW

01.20.11
12.17.10
11.12.10
09.08.10

KEY PLAN

US DEPARTMENT OF VETERANS AFFAIRS
JOHN D. DINGELL
VA MEDICAL CENTER
4646 JOHN R. STREET
DETROIT, MI 48202

ARCHITECT/ENGINEERS:

Albert Kahn Associates, Inc.
Albert Kahn Building
7430 Second Ave.
Detroit, Michigan 48202-2798
Albert Kahn Associates, Inc. is a member of
the Albert Kahn Family of Companies.
ALBERT KAHN JOB # 0088-00100 © 2007

Drawing Title
DETAILS - PIPING

Approved Project Director
J. P. COLE

Project Title
POLICE SERVICES RELOCATION

Location
DETROIT, MICHIGAN

Date
01-20-2011

Checked
JPC

Drawn
FME

Project Number
553-11-108

Building Number
100

Drawing Number
M-501
Dwg. 30 of 50

Office of
Construction
and Facilities
Management

Department of
Veterans Affairs

VA FORM 08-6231