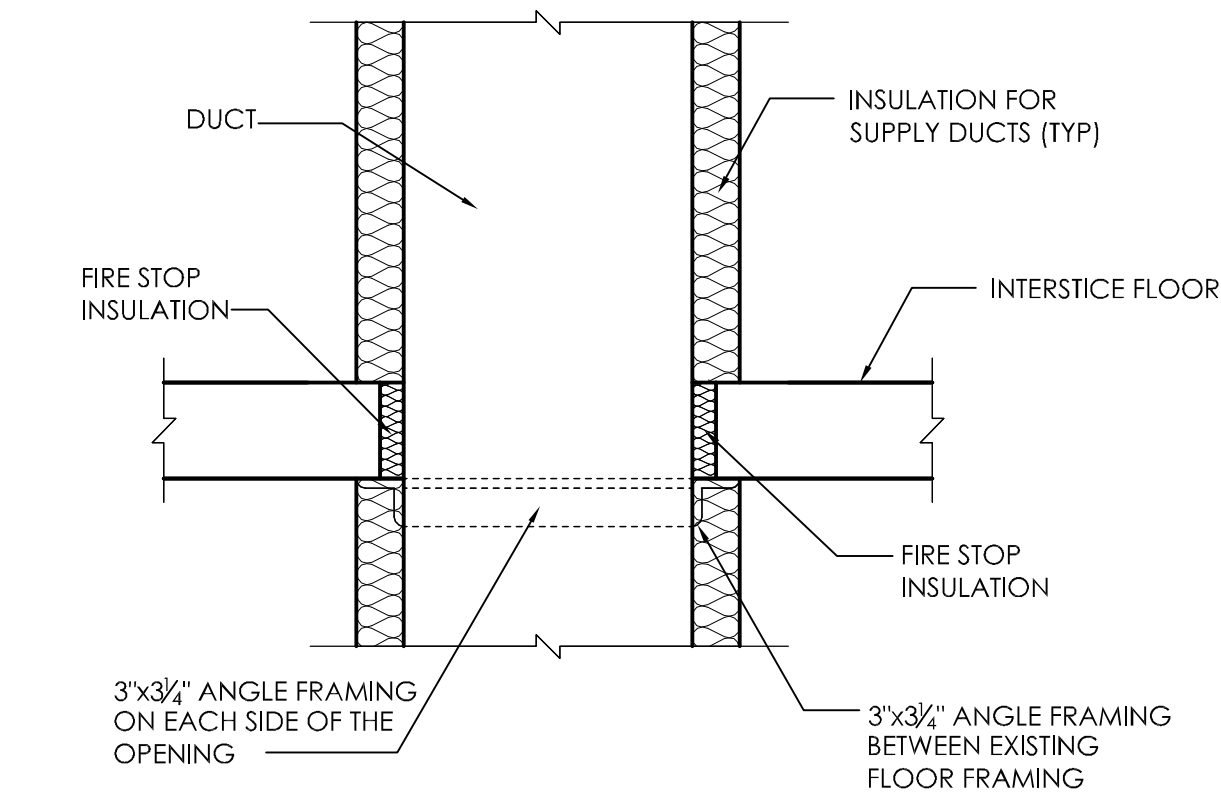
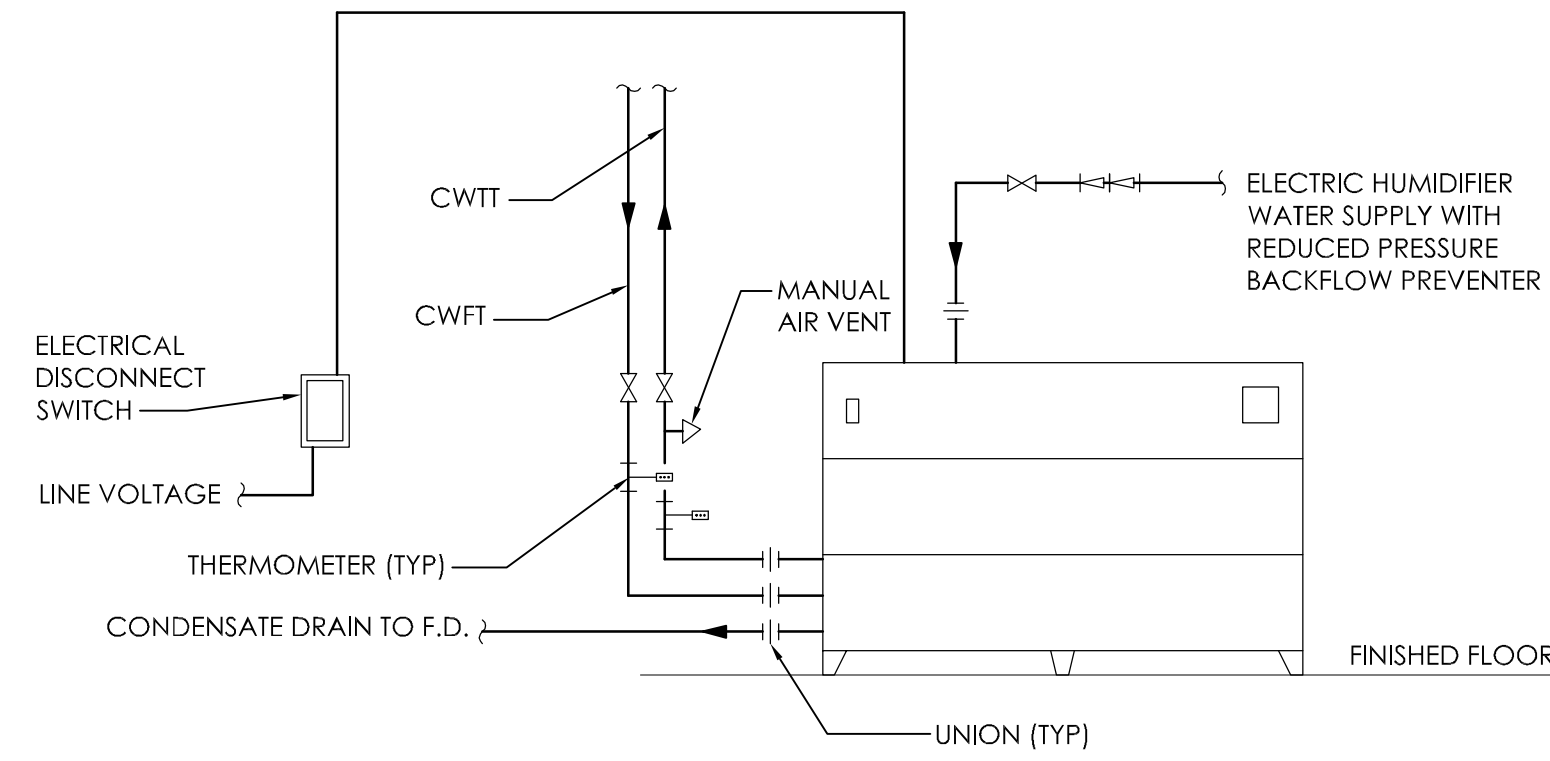


three inches = one foot
one and one half inches = one foot
one inch = one foot
three quarters inch = one foot
one half inch = one foot
three eighths inch = one foot
one quarter inch = one foot
one eighth inch = one foot

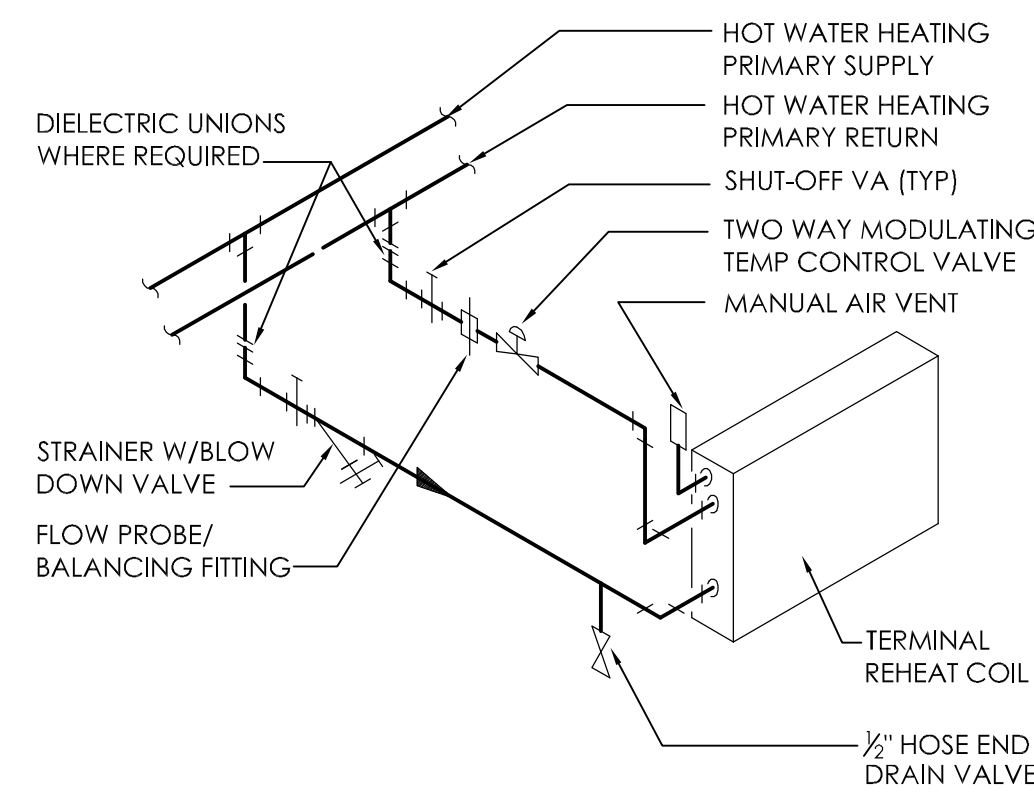


7 DUCT PENETRATION THROUGH INTERSTICE FLOOR
NOT TO SCALE

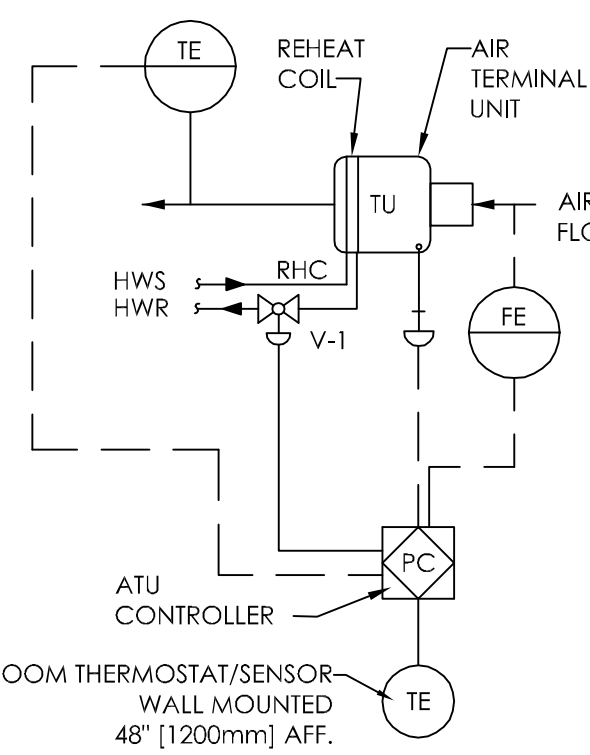
- NOTES:
1. COORDINATE LOCATION OF EXISTING FLOOR FRAMING WITH FLOOR OPENING LOCATION. ADJUST OPENING LOCATION AS REQUIRED TO AVOID THE FRAMING. USE FLEX DUCT BELOW THE FLOOR TO CONNECT WITH DIFFUSER LOCATION ON THE CEILING PLAN.



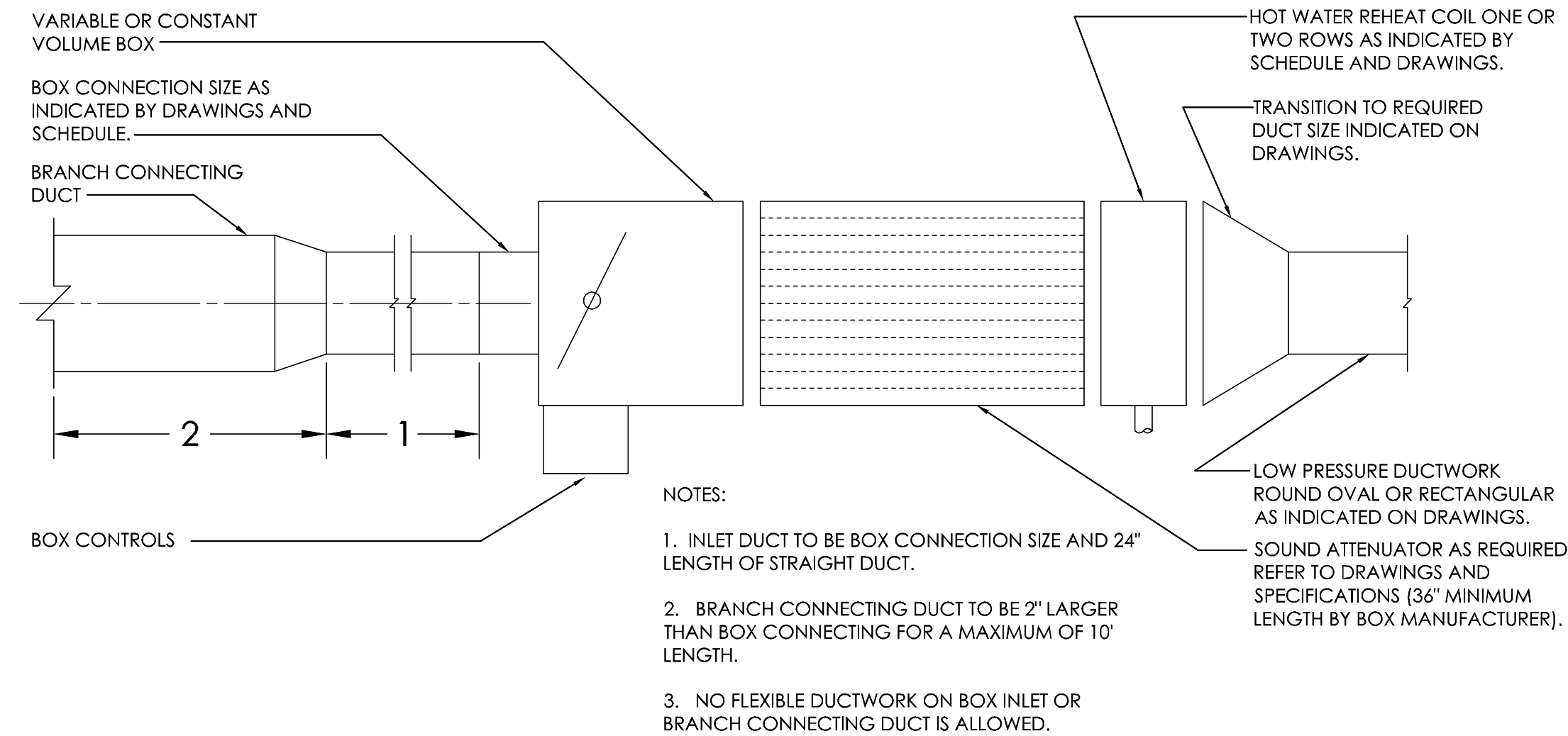
4 COMPUTER ROOM A.C. UNIT DIAGRAM
NOT TO SCALE



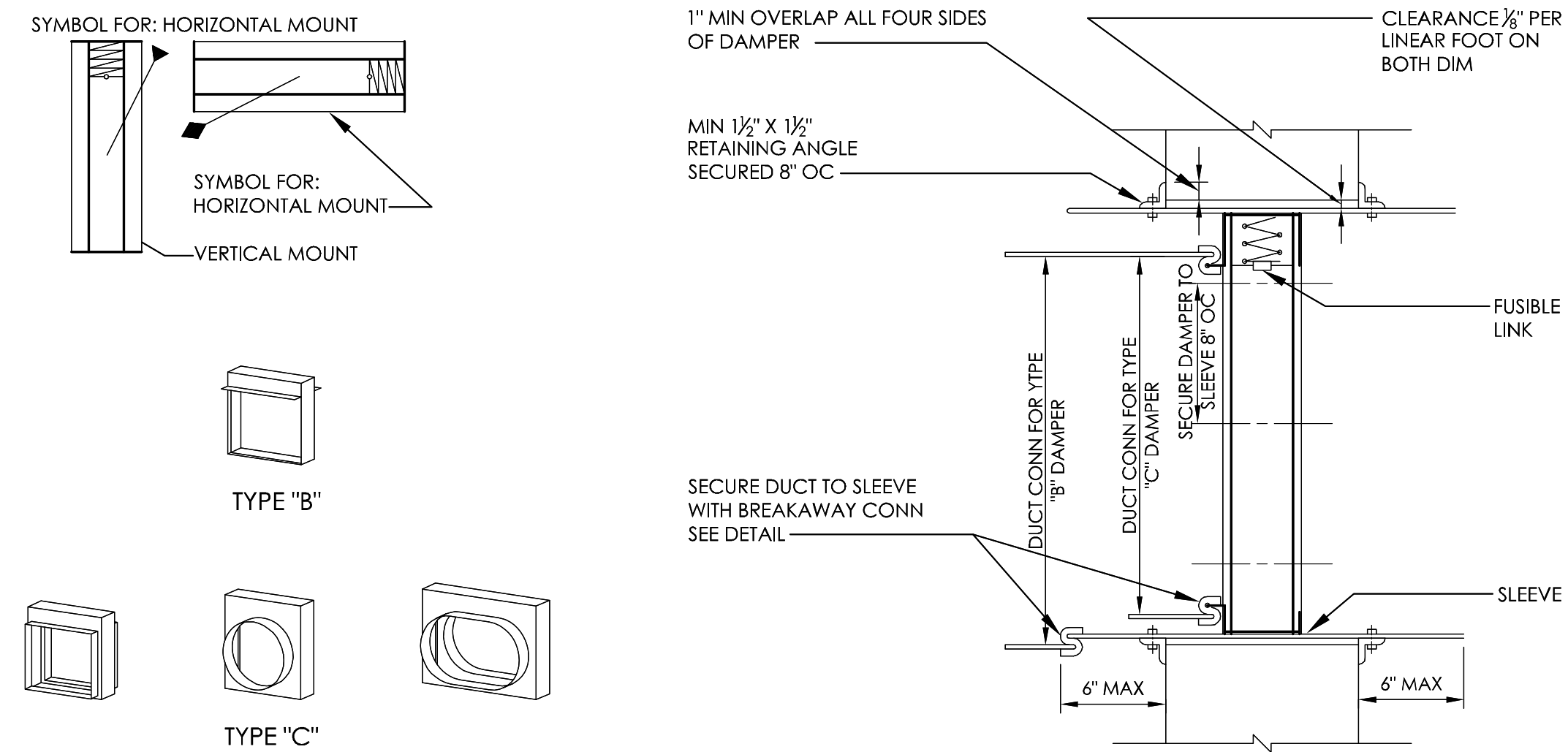
5 PIPING CONNECTIONS FOR TERMINAL REHEAT COIL
NOT TO SCALE



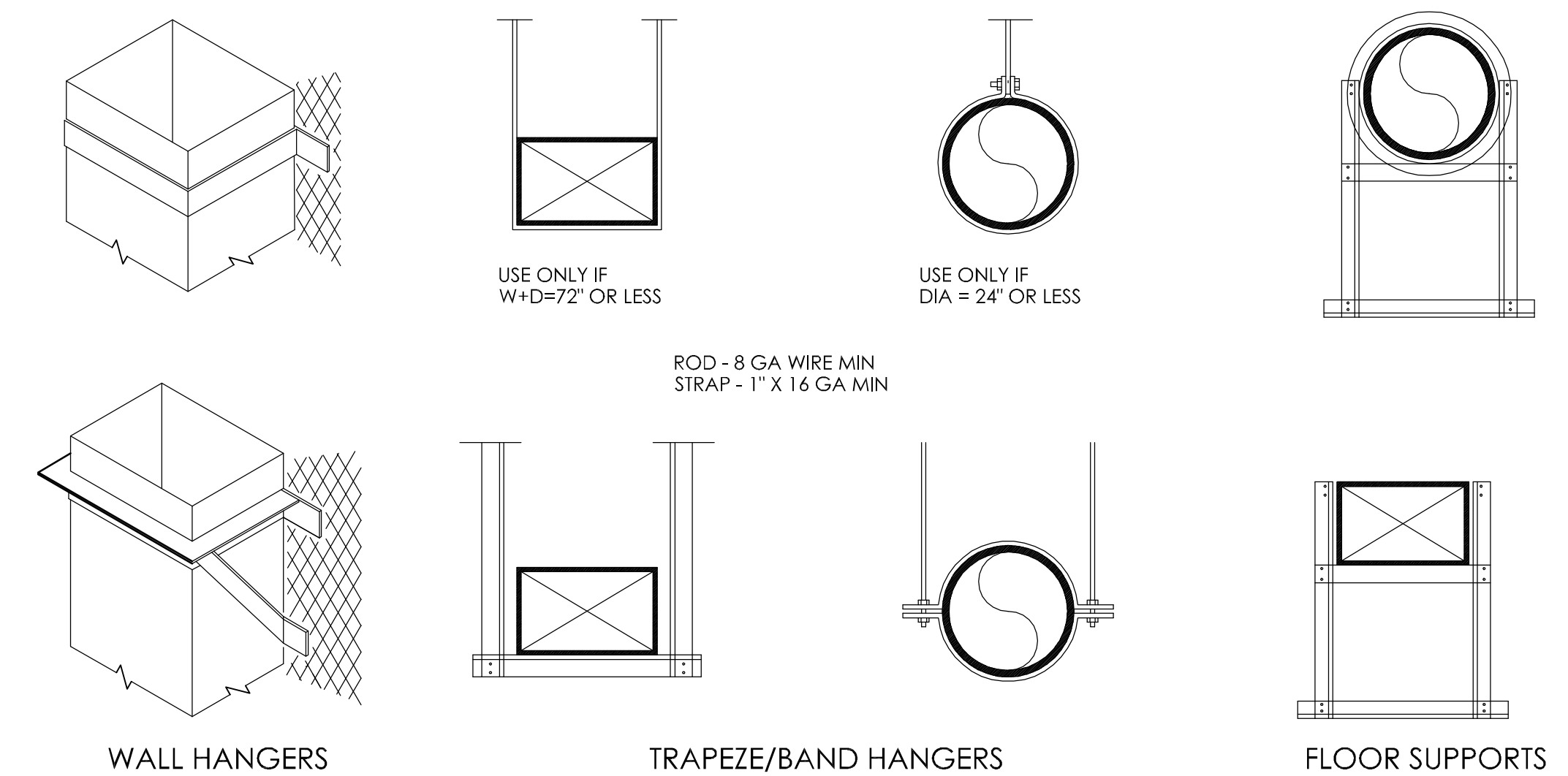
6 AIR TERMINAL UNIT CONTROL DIAGRAM
NOT TO SCALE



1 TERMINAL UNIT
NOT TO SCALE

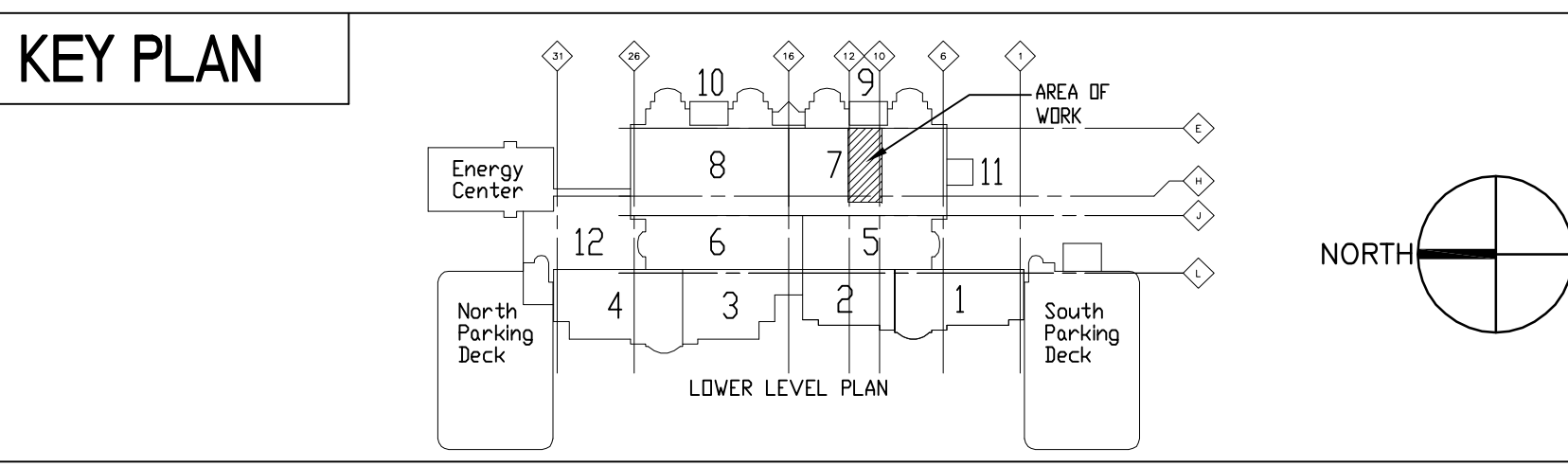


2 TYPE 'B' AND TYPE 'C' FIRE DAMPER
NOT TO SCALE



3 DUCT SUPPORTS AND HANGERS
NOT TO SCALE

Revisions	Date
ISSUE 006 - CD BID	01.20.11
ISSUE 005 - CD OWNER REVIEW	12.17.10
ISSUE 004 - DESIGN DEVELOPMENT RECORD	11.12.10
ISSUE 003 - DESIGN DEVELOPMENT REVIEW	09.08.10



US DEPARTMENT OF VETERANS AFFAIRS
JOHN D. DINGELL
VA MEDICAL CENTER
4646 JOHN R. STREET
DETROIT, MI 48202

ARCHITECT/ENGINEERS:

Kahn

Albert Kahn Associates, Inc.
7430 Second Ave.
Detroit, Michigan 48202-2798
Albert Kahn Associates, Inc. is a member of the Albert Kahn Family of Companies.
ALBERT KAHN JOB # 0088-00.000 © 2007

Drawing Title	DETAILS - HVAC
Approved Project Director	J. P. COLE

Project Title	POLICE SERVICES RELOCATION
Location	DETROIT, MICHIGAN
Date	01-20-2011
Checked	JPC
Drawn	PME

Project Number	553-11-108
Building Number	100
Drawing Number	M-500
Dwg. 29 of 50	

Office of Construction and Facilities Management

Department of Veterans Affairs

FULLY SPRINKLERED