

A

three inches = one foot
6"

B

one and one half inches = one foot
1' 6"

C

one inch = one foot
1'

D

three quarters inch = one foot
3/4'

E

one half inch = one foot
1/2'

F

three eighths inch = one foot
3/8'

G

one quarter inch = one foot
1/4'

H

one eighth inch = one foot
1/8'

I

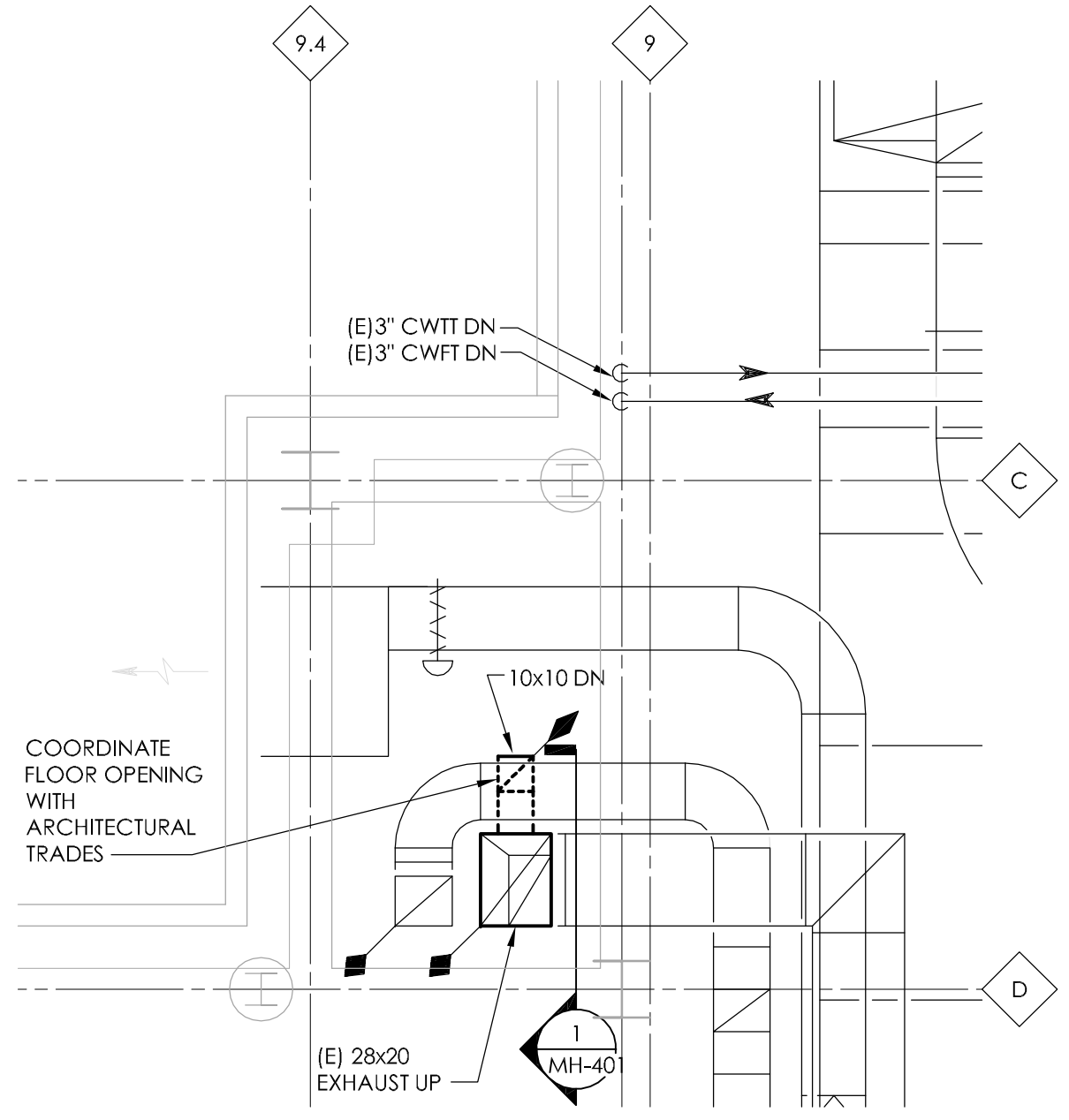
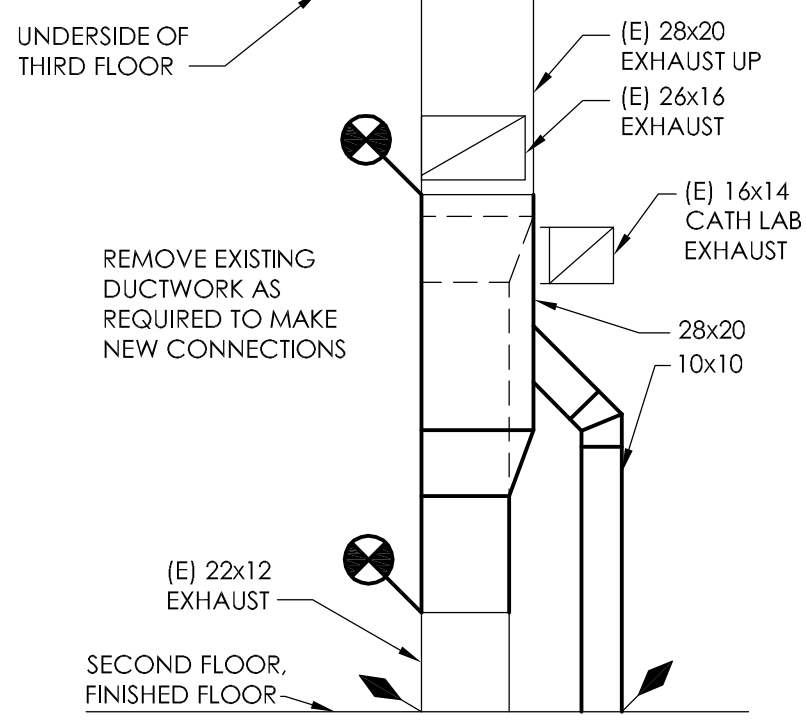
one sixteenth inch = one foot
1/16'

J

one thirty second inch = one foot
1/32'

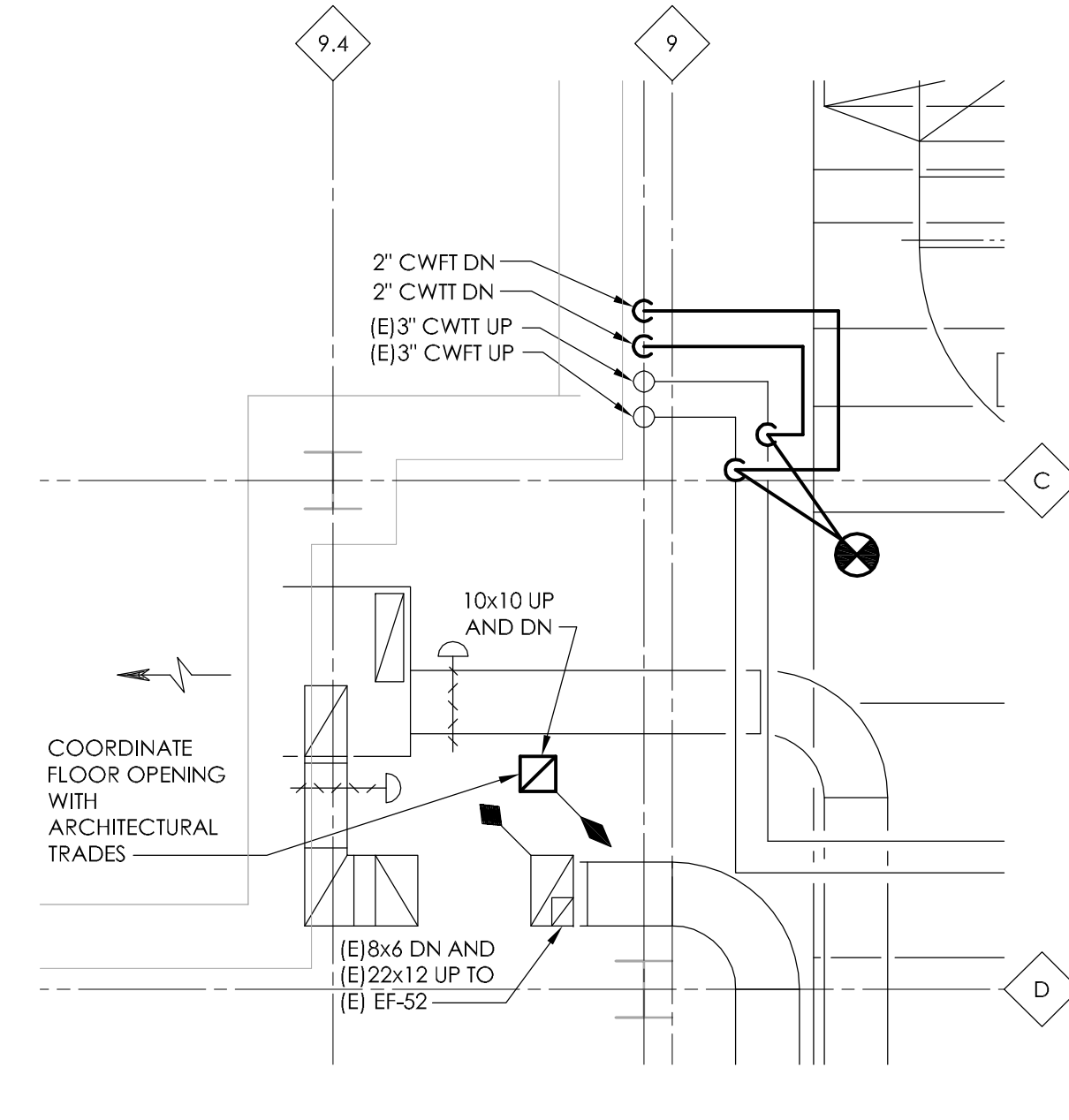
K

one sixty fourth inch = one foot
1/64'



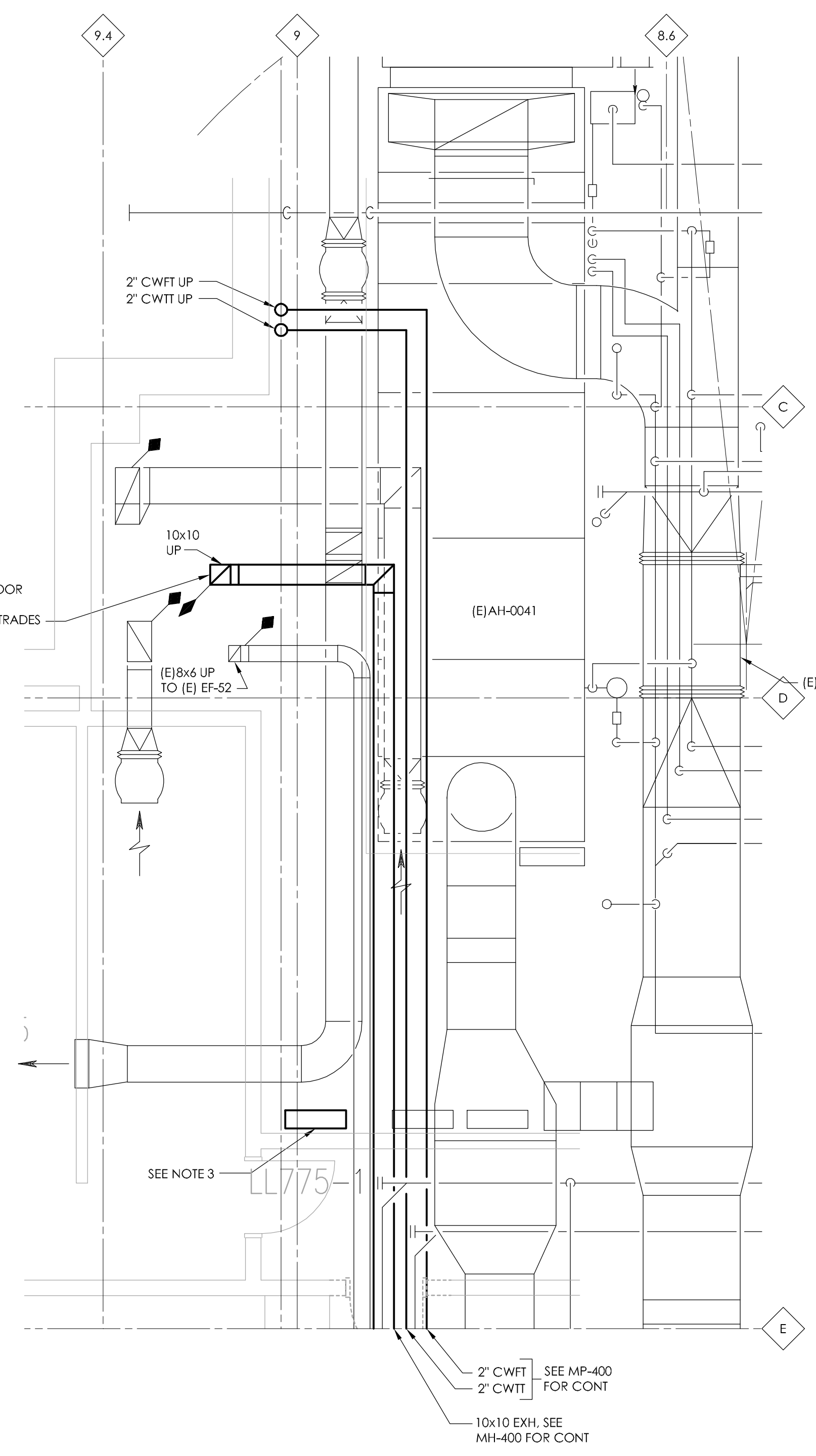
SECOND FLOOR
ENLARGED PLAN - HVAC AND PIPING
MECHANICAL ROOM C2980
1/4" = 1'-0"

- NOTES:
- FOR EXISTING ELEMENTS TO REMAIN NOT LABELED HERE, REFER TO DET-VAMC SHEET H7-12 FOR SIZES AND EQUIPMENT DESIGNATIONS.
 - REFER TO SHEET M-001 FOR GENERAL NOTES.
 - OFFSET NEW DUCT AND PIPING AS REQUIRED TO AVOID INTERFERENCE WITH EXISTING DUCTS AND PIPES.
 - FIRE DAMPER SHALL BE ACCESSIBLE FROM ABOVE THE FLOOR IT IS LOCATED IN.



FIRST FLOOR
ENLARGED PLAN - HVAC AND PIPING
MECHANICAL ROOM C1863
1/4" = 1'-0"

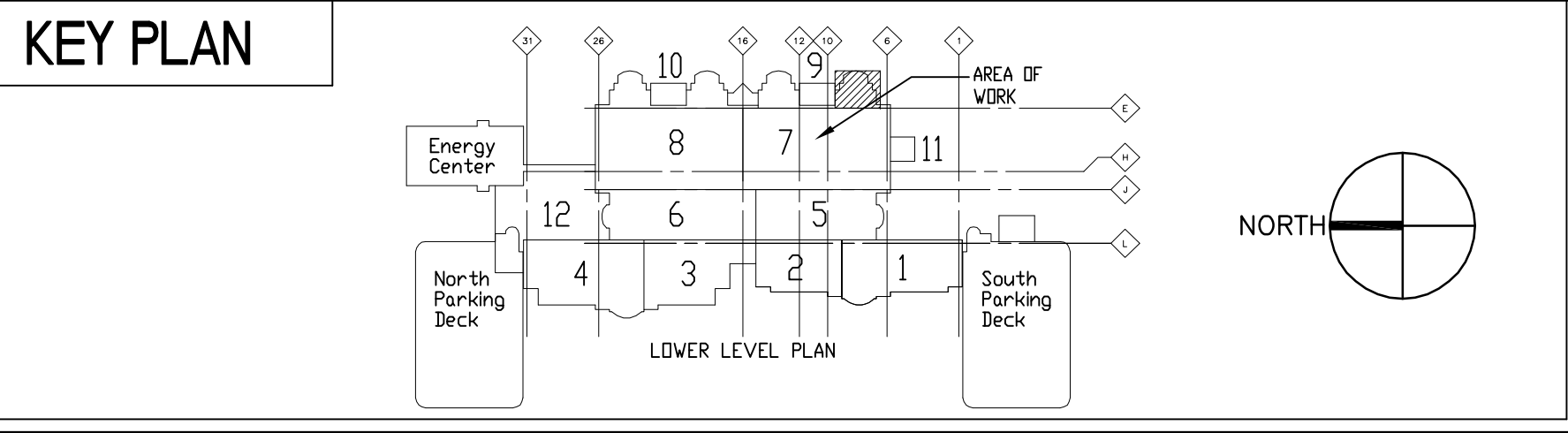
- NOTES:
- FOR EXISTING ELEMENTS TO REMAIN NOT LABELED HERE, REFER TO DET-VAMC SHEET H7-12 FOR SIZES AND EQUIPMENT DESIGNATIONS.
 - REFER TO SHEET M-001 FOR GENERAL NOTES.
 - OFFSET NEW DUCT AND PIPING AS REQUIRED TO AVOID INTERFERENCE WITH EXISTING DUCTS AND PIPES.
 - FIRE DAMPER SHALL BE ACCESSIBLE FROM ABOVE THE FLOOR IT IS LOCATED IN.



LOWER LEVEL
ENLARGED PLAN - HVAC AND PIPING
MECHANICAL ROOM LL776
1/4" = 1'-0"

- NOTES:
- FOR EXISTING ELEMENTS TO REMAIN NOT LABELED HERE, REFER TO DET-VAMC SHEET H7-4 FOR SIZES AND EQUIPMENT DESIGNATIONS.
 - REFER TO SHEET M-001 FOR GENERAL NOTES.
 - 120V TO 24V TRANSFORMER PANEL TO SERVE TERMINAL UNITS TO BE PROVIDED BY CONTROLS CONTRACTOR. INSTALL ADJACENT TO EXISTING ECC (ENGINEERING CONTROL CENTER) SERVING TERMINAL UNITS. COORDINATE 120V POWER WITH ELECTRICAL CONTRACTOR.
 - OFFSET NEW DUCT AND PIPING AS REQUIRED TO AVOID INTERFERENCE WITH EXISTING DUCTS AND PIPES.
 - FIRE DAMPER SHALL BE ACCESSIBLE FROM ABOVE THE FLOOR IT IS LOCATED IN.

ISSUE 006 - CD BID	01.20.11
ISSUE 005 - CD OWNER REVIEW	12.17.10
ISSUE 004 - DESIGN DEVELOPMENT RECORD	11.12.10
ISSUE 003 - DESIGN DEVELOPMENT REVIEW	09.08.10
Revisions	Date



US DEPARTMENT OF
VETERANS AFFAIRS
JOHN D. DINGELL
VA MEDICAL CENTER
4646 JOHN R. STREET
DETROIT, MI 48202

ARCHITECT/ENGINEERS:

Kahn

Albert Kahn Associates, Inc.
Albert Kahn Building
7430 Second Ave.
Detroit, Michigan 48202-2798
Albert Kahn Associates, Inc. is a member of
the Albert Kahn Family of Companies. © 2007
ALBERT KAHN JOB # 0388-00.000

Drawing Title	ENLARGE PLANS - MECHANICAL ROOMS - HVAC AND PIPING
Approved Project Director	J. P. COLE

Project Title	POLICE SERVICES RELOCATION
Location	DETROIT, MICHIGAN
Date	01-20-2011
Checked	JPC
Drawn	PME

Project Number	553-11-108
Building Number	100
Drawing Number	M-401
Dwg. 28 of 50	

FULLY SPRINKLERED

Office of
Construction
and Facilities
Management

Department of
Veterans Affairs