

A
B
C
D
E
F

three inches = one foot
one and one half inches = one foot
one inch = one foot
three quarters inch = one foot
one half inch = one foot
three eighths inch = one foot
one quarter inch = one foot
one eighth inch = one foot

IN-14.01-5 Interior Signs

Wall Directional Sign

Size
IN-14.01
610 mm x 508 mm
(24" x 20")
IN-14.02
762 mm x 508 mm
(30" x 20")
IN-14.03
914 mm x 508 mm
(36" x 20")
IN-14.04
437 mm x 508 mm
(18" x 20")
IN-14.05
305 mm x 508 mm
(12" x 20")

Sign Use & Application
Use this sign for directional information.

Message Configuration
Refer to layout drawing for lettering sizes and dimensions.

Sign Components
Sliding Rail, Back, Copy Panel, Top Accent Bar, End Caps.

Graphic Process
Surface applied vinyl.

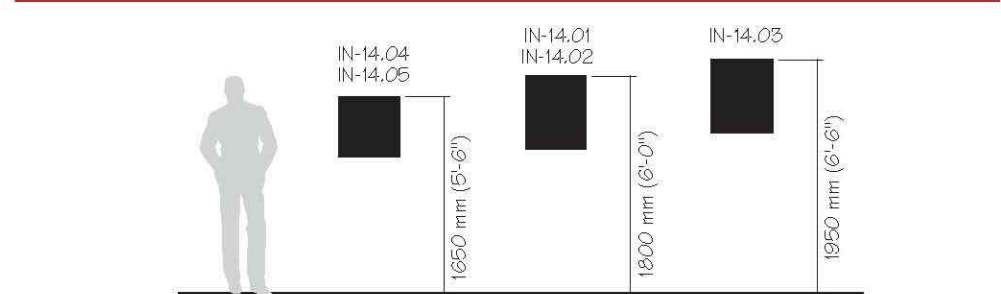
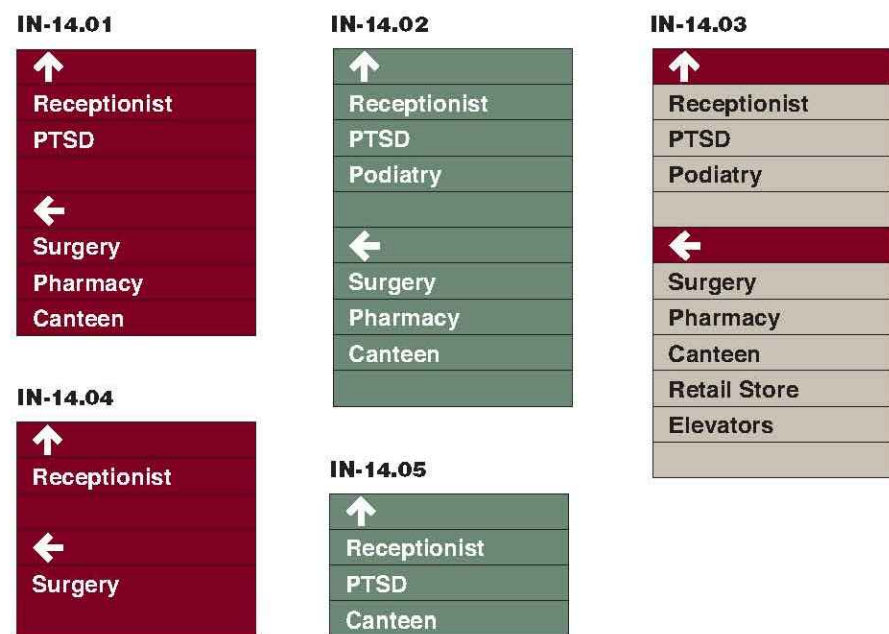
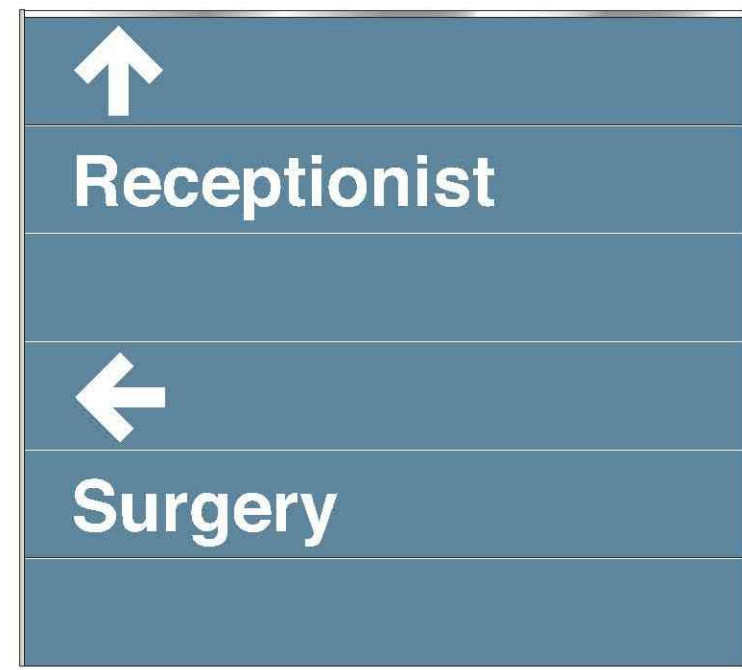
Colors
Text & Arrows: Refer to Color Chart.
Background & Accent Bar: Refer to Color Chart.

Typography
Helvetica Medium.

Mounting
Double sided foam tape, elastic adhesive or screw.

Installation
On wall.

Recommendations
This sign is for use in corridors to direct patients and public through the building.



02/2005 Page 6-5-1

IN-04.02 Interior Signs

Secondary Room Identification

Sign Size
76 mm H x 229 mm W
(3" H x 9" W)

Description & Use
This sign always has a Type 03 as its top sign component. Use this sign to identify rooms or rooms that have short names.

Message Configuration
Refer to layout drawing for lettering sizes and dimensions. Layout A is suggested for short titles. Layout B is for longer names or titles. Layout C is a specific identification by number or letter.

Sign Components
Sliding Rail, Back, Copy Panel, Top Accent Bar, End Caps.

Graphic Process
Surface applied vinyl.

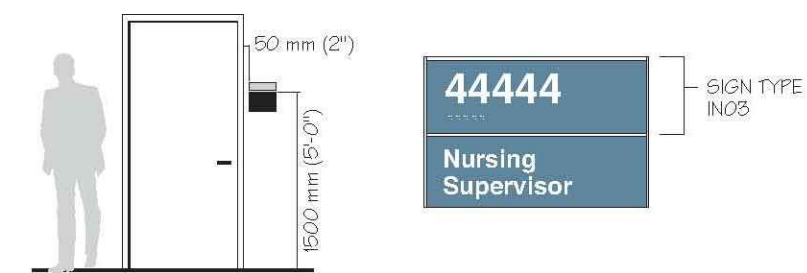
Colors
Text: Refer to Color Chart.
Background & Accent Bar: Refer to Color Chart.

Typography
Helvetica Medium.

Mounting
Double sided foam tape, elastic adhesive or screw.

Installation
Knob side of door, 1500 mm (60") to top of sign and 50 mm (2") over from door frame.

Recommendations
This sign is for rooms that do not require long or large text.



02/2005 Page 6-5-5

IN-03.01 Interior Signs

Room Number Identification

Size
76 mm H x 229 mm W
(3" H x 9" W)

Description & Use
Sign is to be placed on all rooms that require identification.

Message Configuration
Refer to layout drawing for lettering sizes and dimensions.

Sign Components
Sliding Rail, Back, Etched Sign Plaque, Aluminum Top Accent Bar, End Cap.

Graphic Process
Text is room number with accompanying Braille.

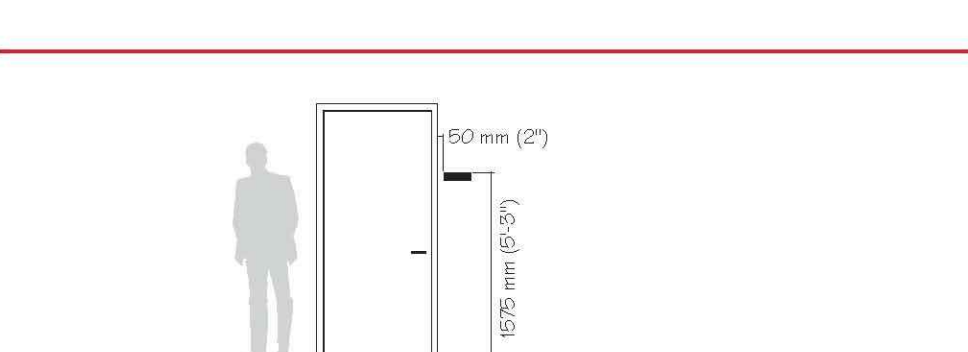
Colors
Text: Refer to Color Chart.
Background & Accent Bar: Refer to Color Chart.

Type Style
Helvetica Medium
Grade 2 Braille.

Mounting
Double sided foam tape, elastic adhesive or screw.

Installation
Knob side of door, 1575 mm (63") to top of sign and 50 mm (2") over from door frame.

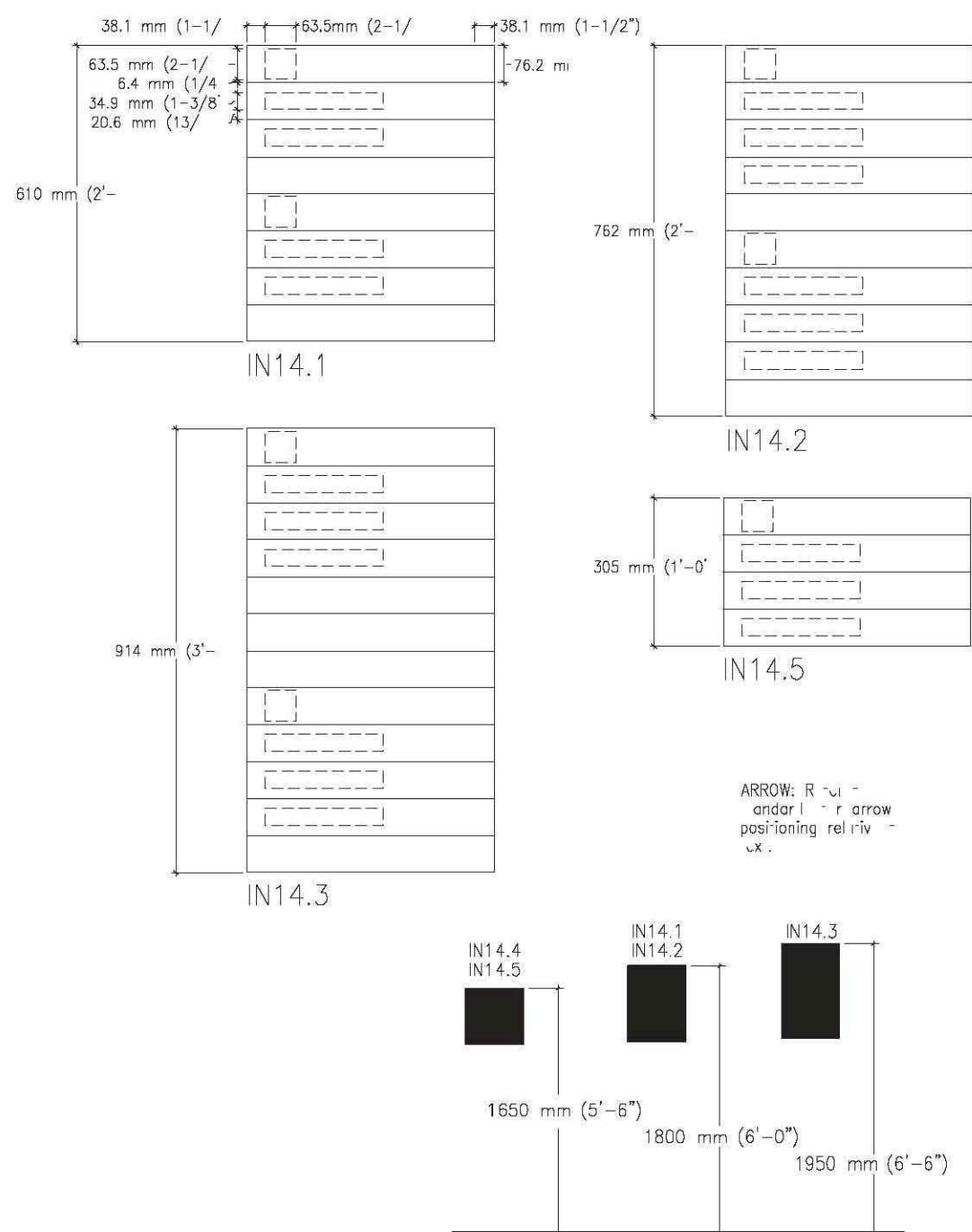
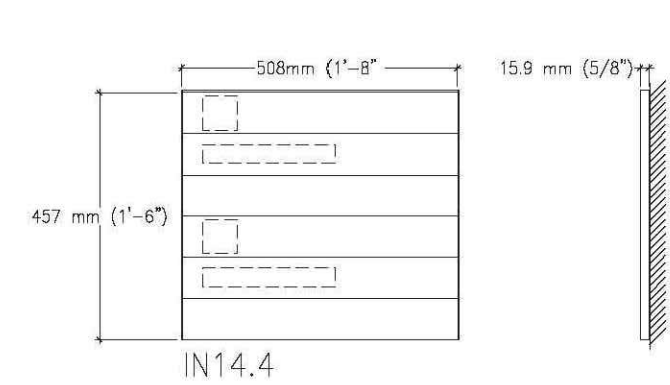
Recommendations
This sign is to be used for all rooms, but can also be used to identify corridors and alcoves as necessary. Do not use on exterior and stairwell doors.



02/2005 Page 6-5-1

IN-14.01-5 Interior Signs

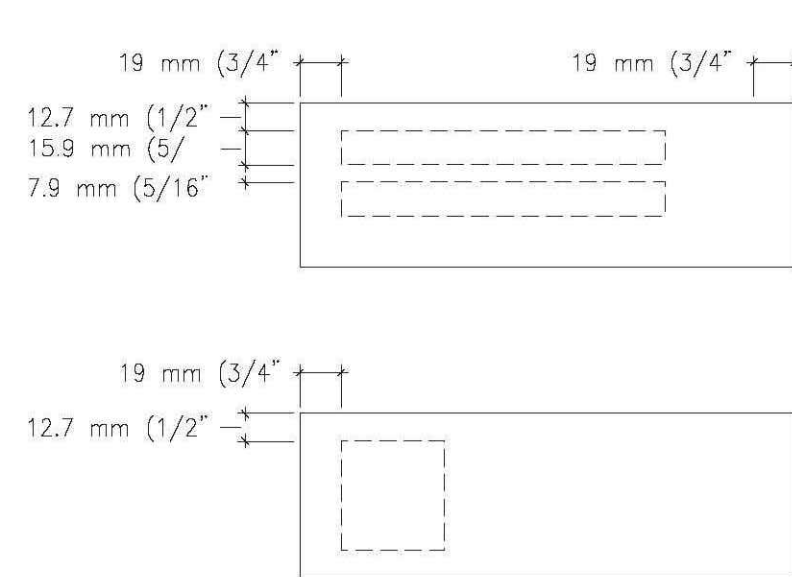
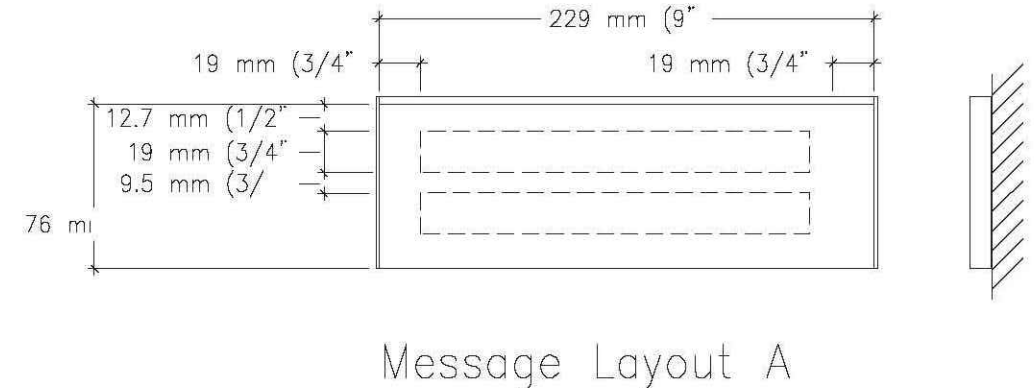
Wall Directional Sign



02/2005 Page 6-5-1

IN-04.02 Interior Signs

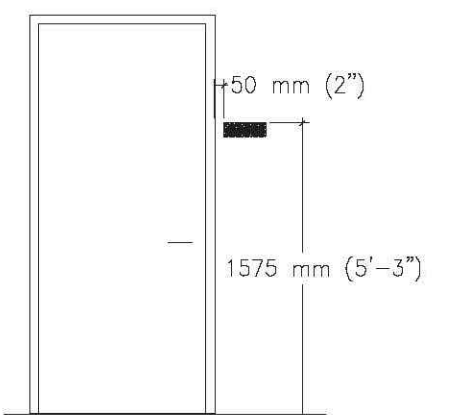
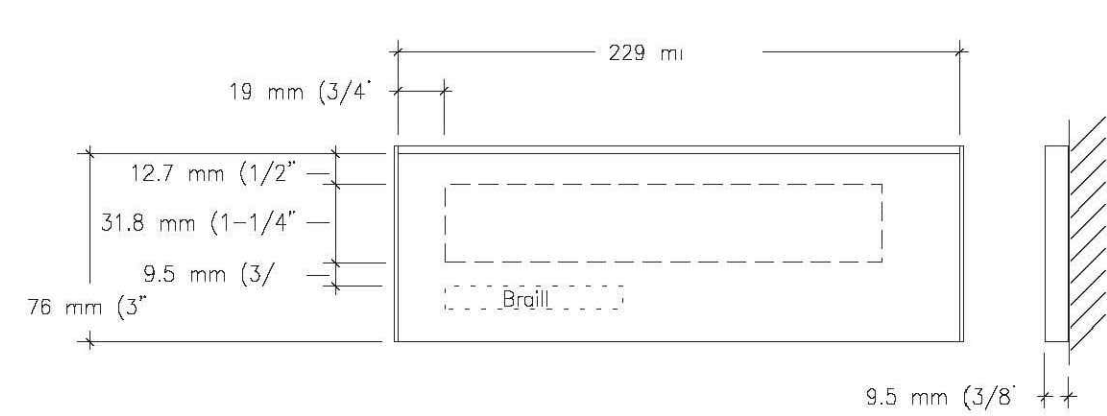
Secondary Room Identification



02/2005 Page 6-5-5

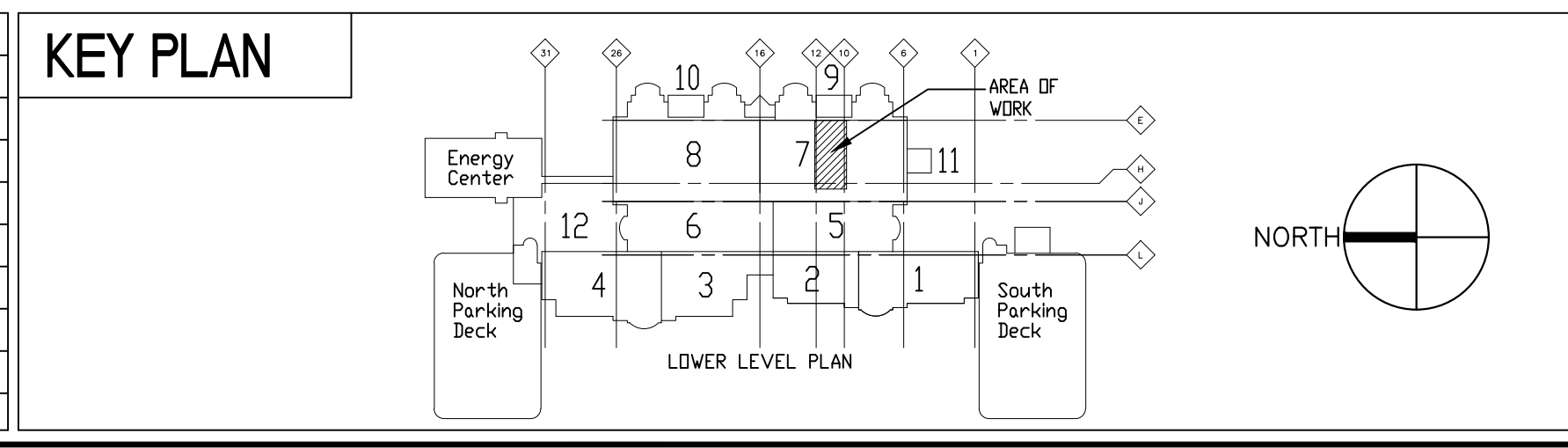
IN-03.01 Interior Signs

Room Number Identification



02/2005 Page 6-5-1

| Revisions | Date |
|-------------------------------------|----------|
| ISSUE 006 - CD BID | 01.20.11 |
| ISSUE 005 - CD OWNER REVIEW | 12.17.10 |
| ISSUE 004 DESIGN DEVELOPMENT RECORD | 11.12.10 |



US DEPARTMENT OF VETERANS AFFAIRS
JOHN D. DINGELL
VA MEDICAL CENTER
4646 JOHN R. STREET
DETROIT, MI 48202

ARCHITECT/ENGINEERS:

Kahn

Albert Kahn Associates, Inc.
Albert Kahn Building
7430 Second Ave.
Detroit, Michigan 48202-2798
Albert Kahn Associates, Inc. is a member of the Albert Kahn Family of Companies. © 2007
ALBERT KAHN JOB # 0398-00.000

| | |
|---------------------------|-----------------------------|
| Drawing Title | SIGN ELEVATIONS AND DETAILS |
| Approved Project Director | K. JAPOWICZ |

| | |
|---------------------------|-----------------------------|
| Drawing Title | SIGN ELEVATIONS AND DETAILS |
| Approved Project Director | K. JAPOWICZ |
| Date | 01-20-2011 |
| Checked | EAM |
| Drawn | CAT |
| Project Title | POLICE SERVICES RELOCATION |
| Location | DETROIT, MICHIGAN |
| Project Number | 553-11-108 |
| Building Number | 100 |
| Drawing Number | IG-402 |
| Dwg. 18 of 50 | |

Office of Construction and Facilities Management

Department of Veterans Affairs