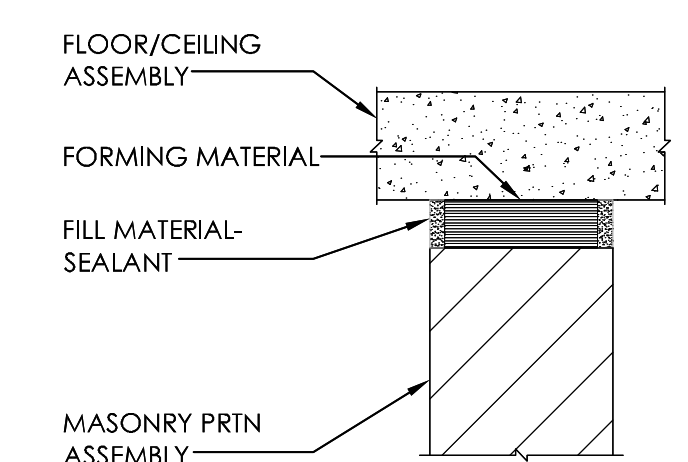


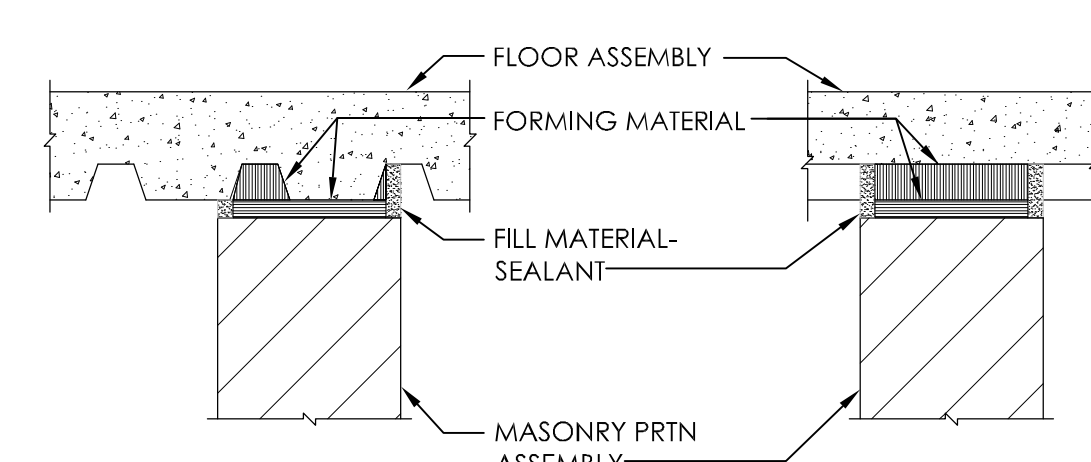
three inches = one foot  
one and one half inches = one foot  
one inch = one foot  
three quarters inch = one foot  
one half inch = one foot  
three eighths inch = one foot  
one quarter inch = one foot  
one eighth inch = one foot



FIRE RATING: 1 & 2 HR  
L RATED: YES  
MOVEMENT: CLASS 2  
JOINT WIDTH: 2"

FLOOR: FORMED CONC  
PRTN: MASONRY  
FILL MATERIAL: SEALANT

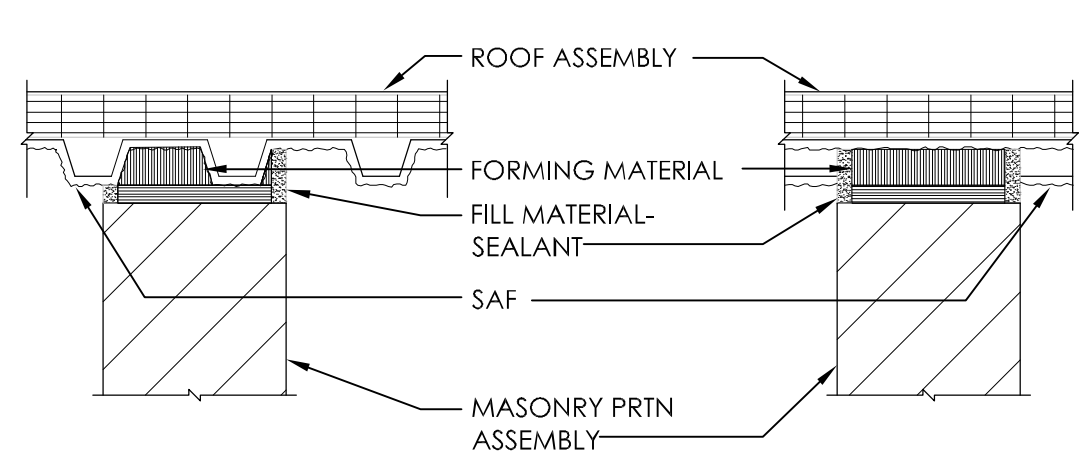
21 CMU WALL AT FLOOR/CEILING ASSEMBLY  
1 1/2" = 1'-0"



FIRE RATING: 1 & 2 HR  
L RATED: YES  
MOVEMENT: CLASS 2  
JOINT WIDTH: 3/4"

FLOOR: CONC & STL DECK  
PRTN: MASONRY  
FILL MATERIAL: SEALANT

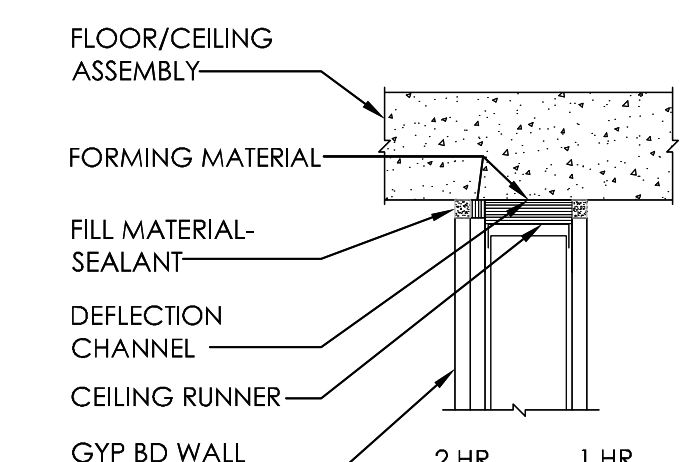
17 CMU WALL AT FLOOR ASSEMBLY  
1 1/2" = 1'-0"



FIRE RATING: 1 & 2 HR  
L RATED: YES  
MOVEMENT: CLASS 2  
JOINT WIDTH: 3/4"

ROOF: STL DECK W/ SAF  
PRTN: MASONRY  
FILL MATERIAL: SEALANT

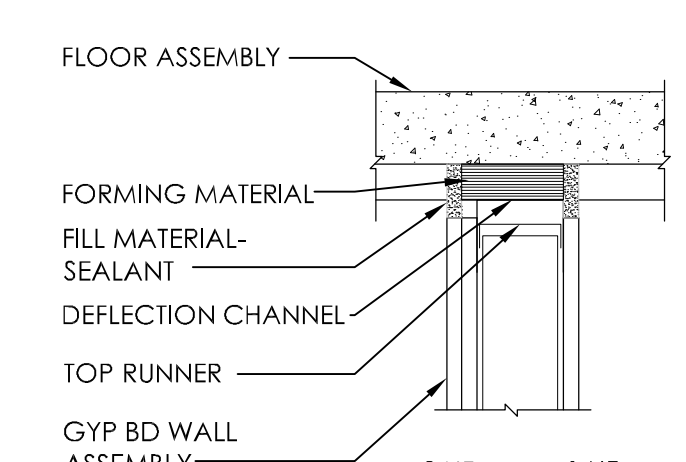
13 CMU WALL AT ROOF ASSEMBLY  
1 1/2" = 1'-0"



FIRE RATING: 1 & 2 HR  
L RATED: YES  
MOVEMENT: CLASS 2  
JOINT WIDTH: 1"

FLOOR: FORMED CONC  
WALL: GYP BD/STRAIGHT CUT  
FILL MATERIAL: SEALANT

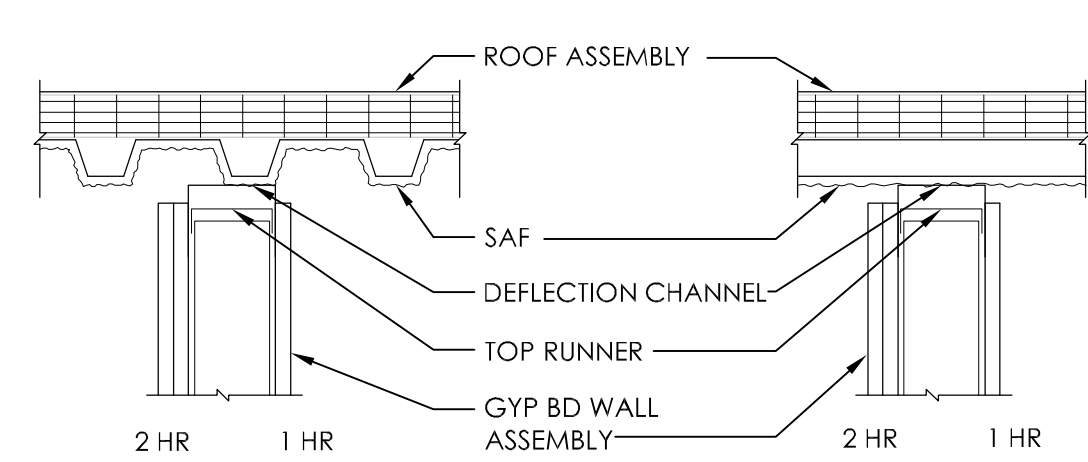
9 GYP BD WALL AT FLOOR/CEILING ASSEMBLY  
1 1/2" = 1'-0"



FIRE RATING: 1 & 2 HR  
L RATED: YES  
MOVEMENT: CLASS 2  
JOINT WIDTH: 3/4"

FLOOR: CONC & STL DECK  
WALL: GYP BD/STRAIGHT CUT  
FILL MATERIAL: SEALANT

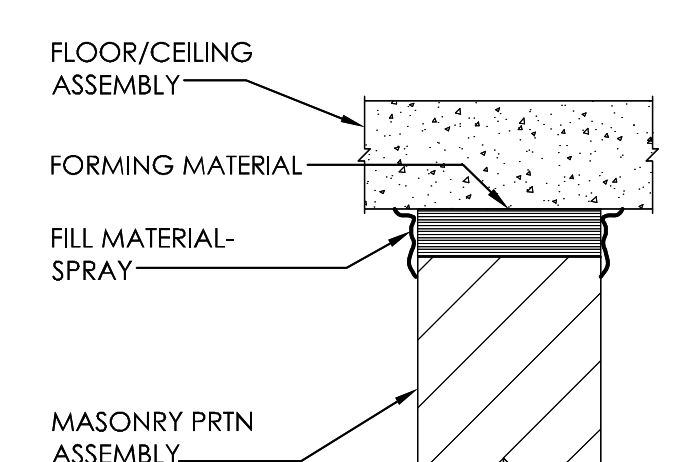
5 GYP BD WALL AT FLOOR ASSEMBLY  
1 1/2" = 1'-0"



FIRE RATING: 1 & 2 HR  
L RATED: YES  
MOVEMENT: CLASS 2  
JOINT WIDTH: 9"

ROOF: STL DECK W/ SAF  
WALL: GYP BD/STRAIGHT CUT  
FILL MATERIAL: SEALANT

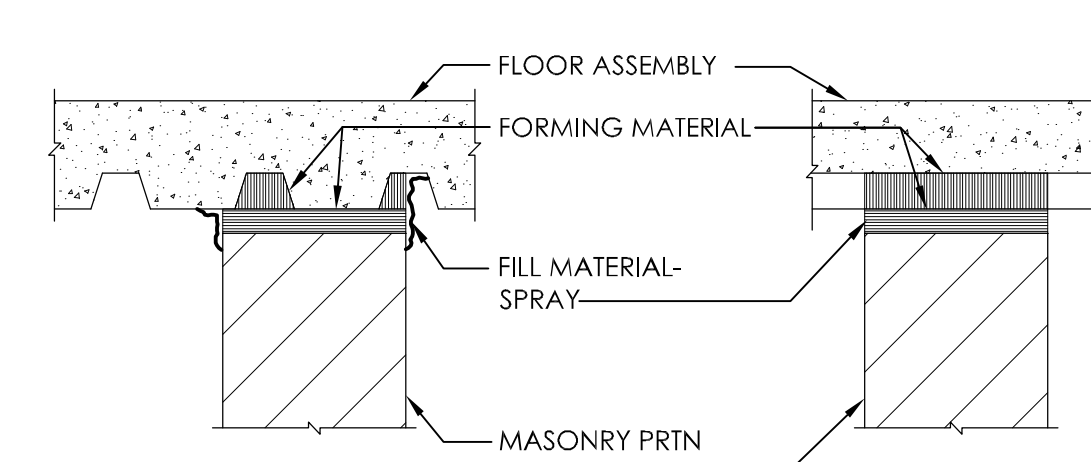
1 GYP BD WALL AT ROOF ASSEMBLY  
1 1/2" = 1'-0"



FIRE RATING: 1 & 2 HR  
L RATED: YES  
MOVEMENT: CLASS 2  
JOINT WIDTH: 2"

FLOOR: FORMED CONC  
PRTN: MASONRY  
FILL MATERIAL: SPRAY

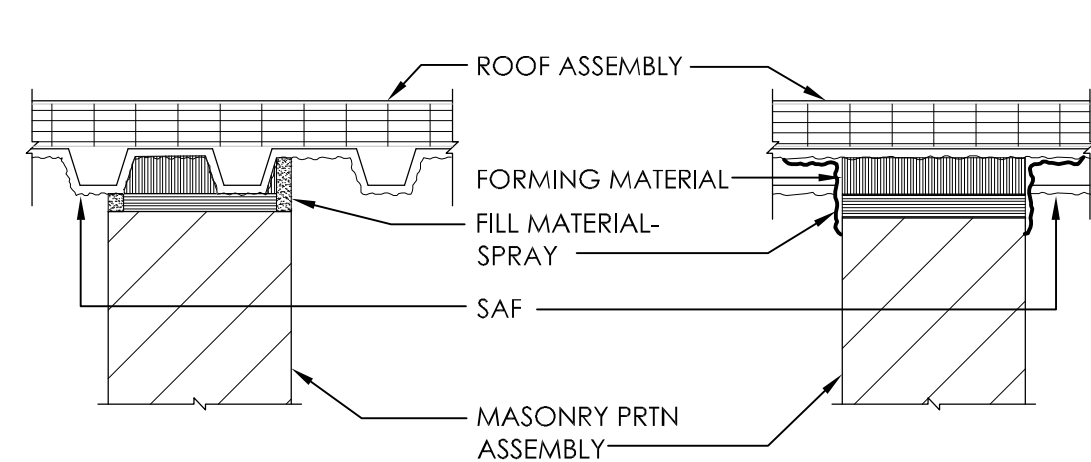
22 CMU WALL AT FLOOR/CEILING ASSEMBLY  
1 1/2" = 1'-0"



FIRE RATING: 1 & 2 HR  
L RATED: YES  
MOVEMENT: CLASS 2  
JOINT WIDTH: 1"

FLOOR: CONC & STL DECK  
PRTN: MASONRY  
FILL MATERIAL: SPRAY

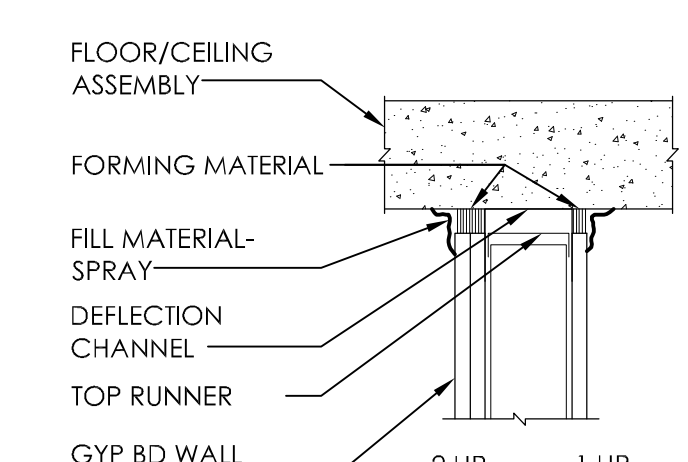
18 CMU WALL AT FLOOR ASSEMBLY  
1 1/2" = 1'-0"



FIRE RATING: 1 & 2 HR  
L RATED: YES  
MOVEMENT: CLASS 2  
JOINT WIDTH: 1"

ROOF: STL DECK W/ SAF  
PRTN: MASONRY  
FILL MATERIAL: SPRAY

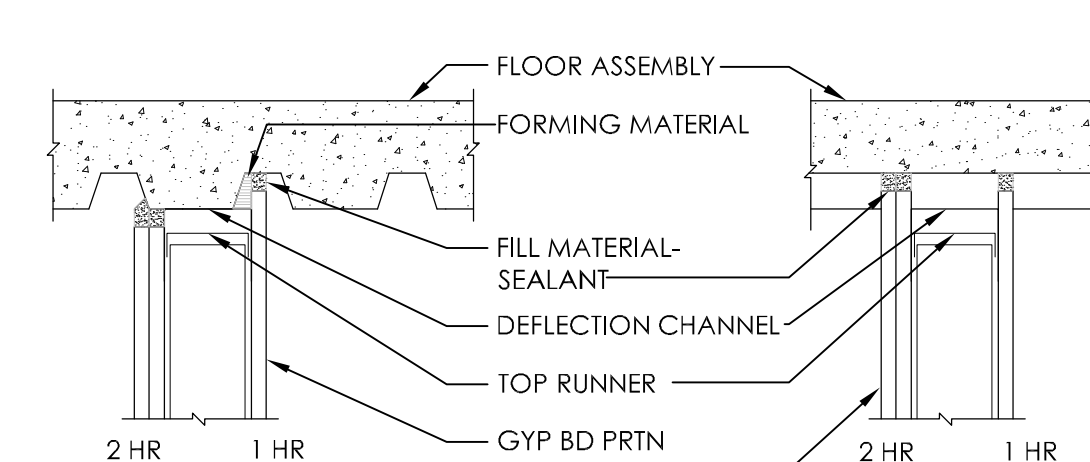
14 CMU WALL AT ROOF ASSEMBLY  
1 1/2" = 1'-0"



FIRE RATING: 1 & 2 HR  
L RATED: YES  
MOVEMENT: CLASS 2  
JOINT WIDTH: 1"

FLOOR: FORMED CONC  
PRTN: GYP BD/STRAIGHT CUT  
FILL MATERIAL: SPRAY

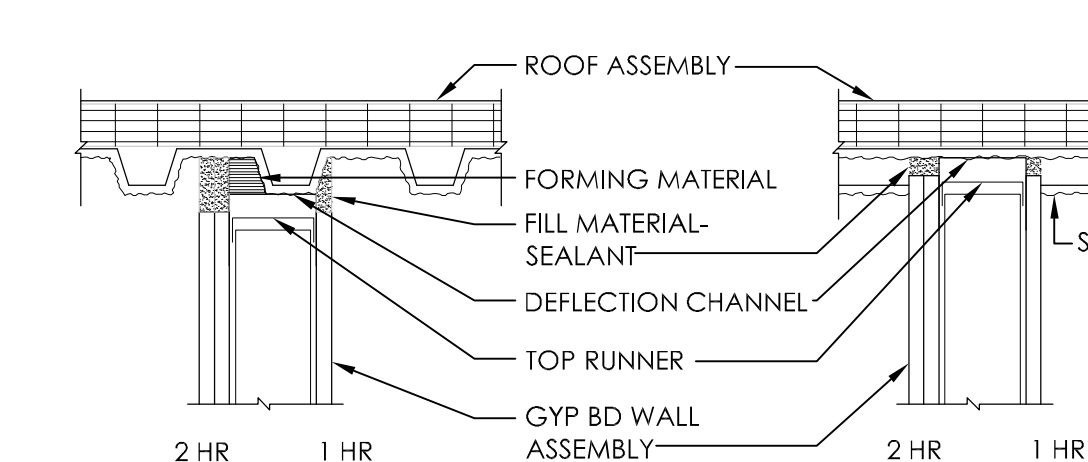
10 GYP BD WALL AT FLOOR/CEILING ASSEMBLY  
1 1/2" = 1'-0"



FIRE RATING: 1 & 2 HR  
L RATED: YES  
MOVEMENT: CLASS 2  
JOINT WIDTH: 3/4"

FLOOR: CONC & STL DECK  
PRTN: GYP BD COPE  
FILL MATERIAL: SEALANT

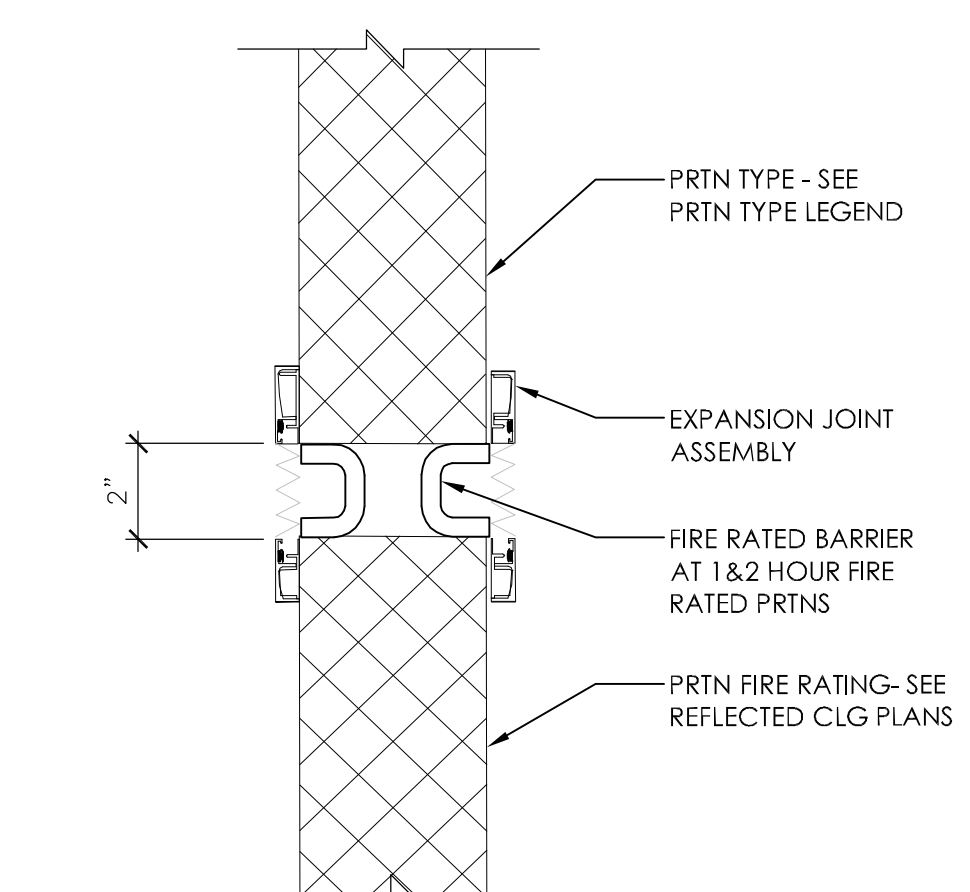
6 GYP BD WALL AT FLOOR ASSEMBLY  
1 1/2" = 1'-0"



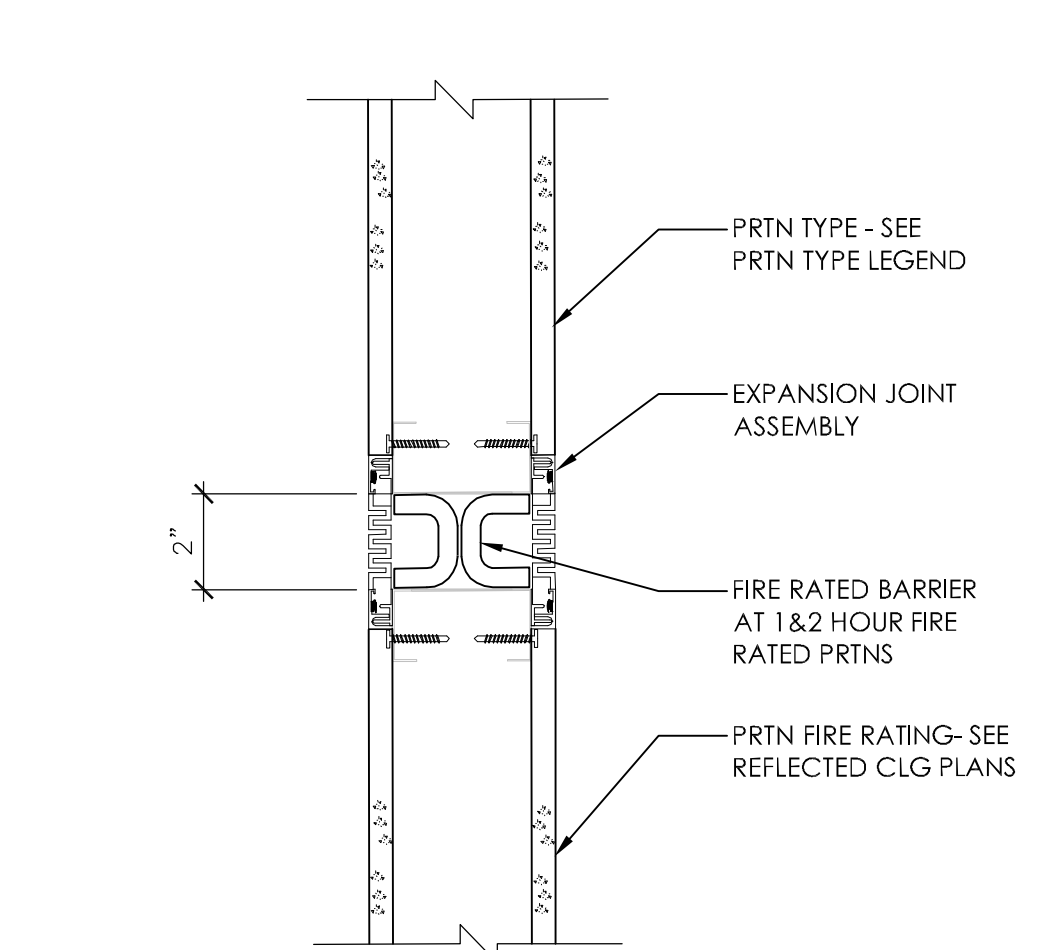
FIRE RATING: 1 & 2 HR  
L RATED: YES  
MOVEMENT: CLASS 2  
JOINT WIDTH: 3/4"

FLOOR: CONC & STL DECK  
PRTN: GYP BD COPE  
FILL MATERIAL: SEALANT

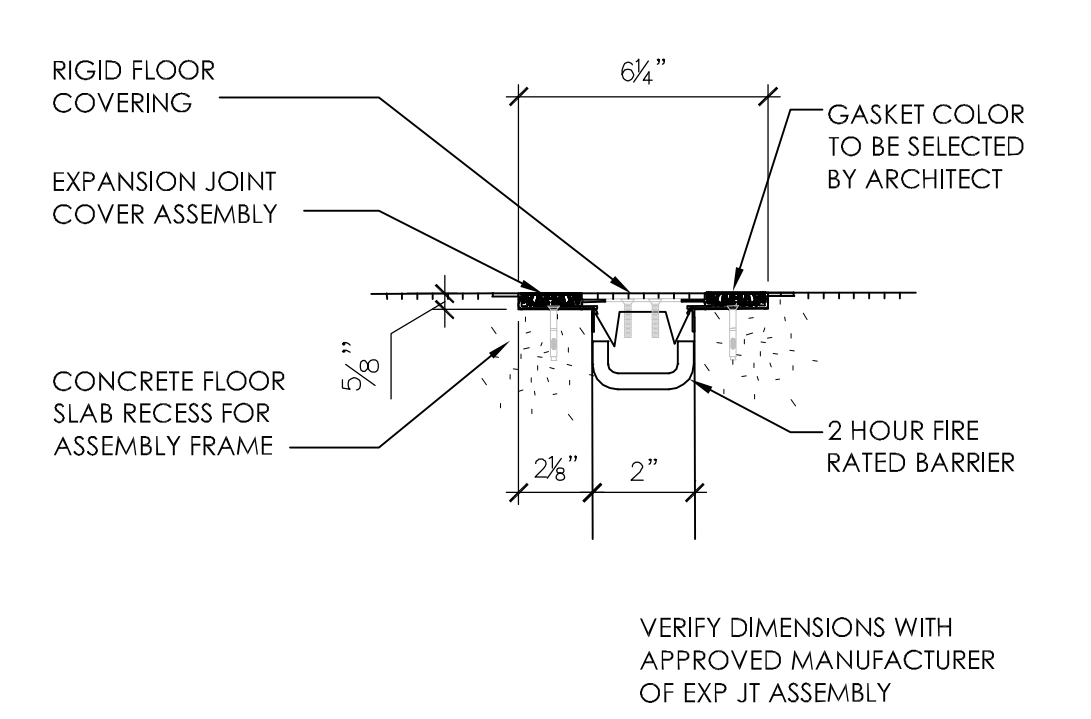
2 GYP BD WALL AT ROOF ASSEMBLY  
1 1/2" = 1'-0"



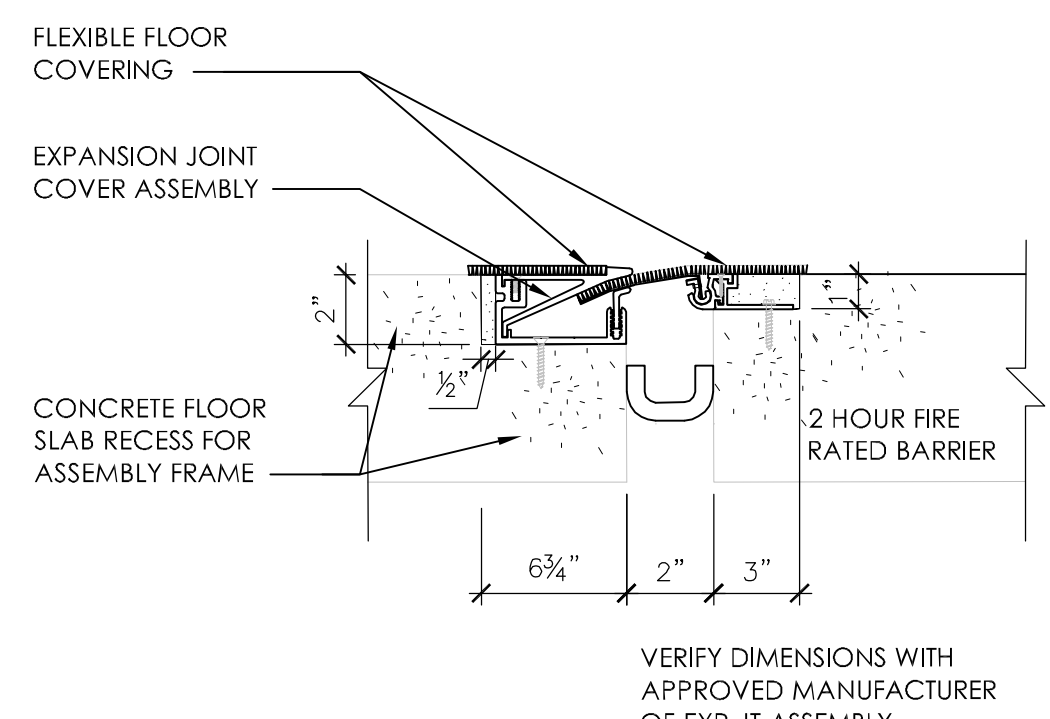
24 PARTITION TO PARTITION EXPANSION JOINT ASSEMBLY  
3" = 1'-0"



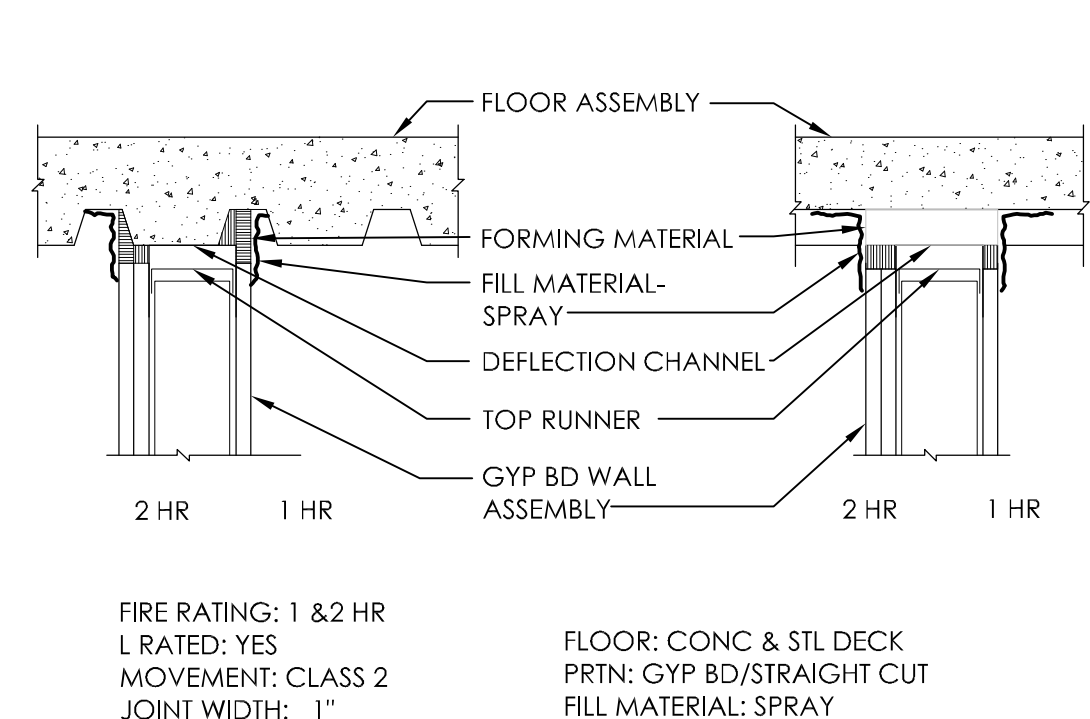
20 PARTITION TO PARTITION EXPANSION JOINT ASSEMBLY  
3" = 1'-0"



16 RIGID FLOORING FLOOR TO FLOOR EXPANSION JOINT ASSEMBLY  
3" = 1'-0"



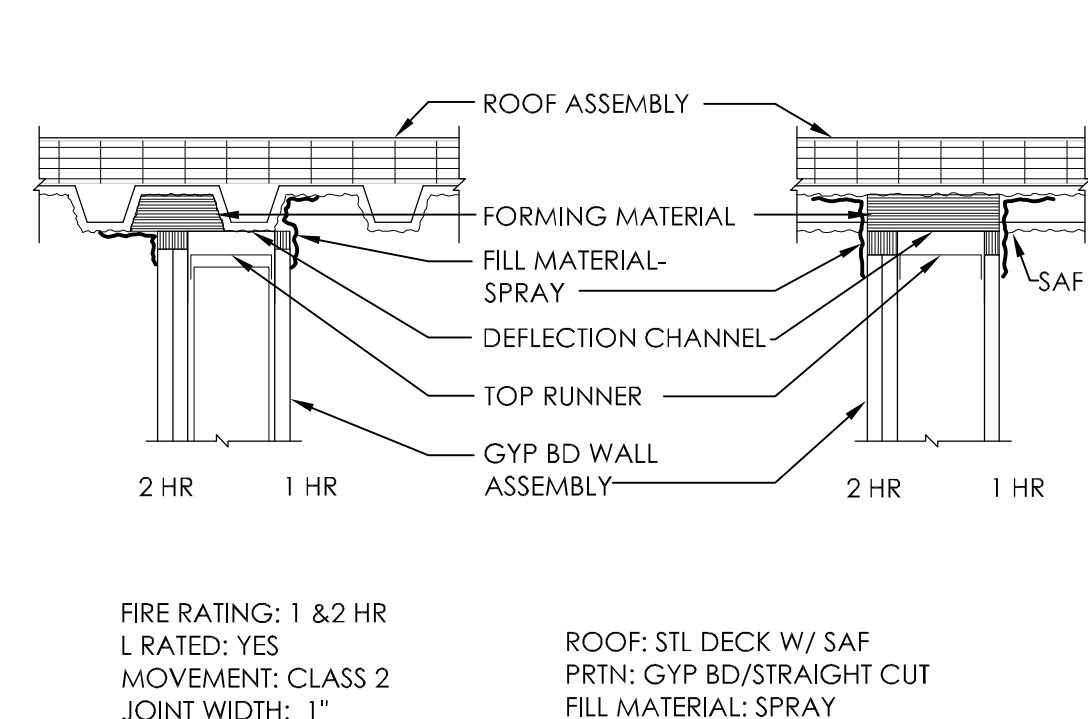
12 FLEXIBLE FLOORING FLOOR TO FLOOR EXPANSION JOINT ASSEMBLY  
3" = 1'-0"



FIRE RATING: 1 & 2 HR  
L RATED: YES  
MOVEMENT: CLASS 2  
JOINT WIDTH: 1"

FLOOR: CONC & STL DECK  
PRTN: GYP BD/STRAIGHT CUT  
FILL MATERIAL: SPRAY

7 GYP BD WALL AT FLOOR ASSEMBLY  
1 1/2" = 1'-0"



FIRE RATING: 1 & 2 HR  
L RATED: YES  
MOVEMENT: CLASS 2  
JOINT WIDTH: 1"

ROOF: STL DECK W/ SAF  
PRTN: GYP BD/STRAIGHT CUT  
FILL MATERIAL: SPRAY

3 GYP BD WALL AT ROOF ASSEMBLY  
1 1/2" = 1'-0"

ISSUE 006 - CD BID	01.20.11
ISSUE 005 - CD OWNER REVIEW	12.17.10
ISSUE 004 - DESIGN DEVELOPMENT RECORD	11.12.10
ISSUE 003 - DESIGN DEVELOPMENT REVIEW	09.08.10
Revisions	Date

KEY PLAN

US DEPARTMENT OF VETERANS AFFAIRS  
JOHN D. DINGELL  
VA MEDICAL CENTER  
4646 JOHN R. STREET  
DETROIT, MI 48202

ARCHITECT/ENGINEERS:

Albert Kahn Associates, Inc.  
Albert Kahn Building  
7430 Second Ave.  
Detroit, Michigan 48202-2798  
Albert Kahn Associates, Inc. is a member of the Albert Kahn Family of Companies.  
ALBERT KAHN JOB # 0388-00.000 © 2007

Drawing Title  
FIRE RESISTANT JOINT SYSTEMS - HEAD OF WALL

Approved Project Director  
K.JAPOWICZ

Project Title  
POLICE SERVICES RELOCATION

Location  
DETROIT, MICHIGAN

Date  
01-20-2011

Checked  
P.PATEL

Drawn  
CJO

Project Number  
553-11-108

Building Number  
100

Drawing Number  
GI-003  
Dwg. 3 of 50

Office of Construction and Facilities Management

FULLY SPRINKLERED