

A

B

C

D

E

F

A

B

C

D

E

F

three inches = one foot

one and one half inches = one foot

one inch = one foot

three quarters inch = one foot

one half inch = one foot

three eighths inch = one foot

one quarter inch = one foot

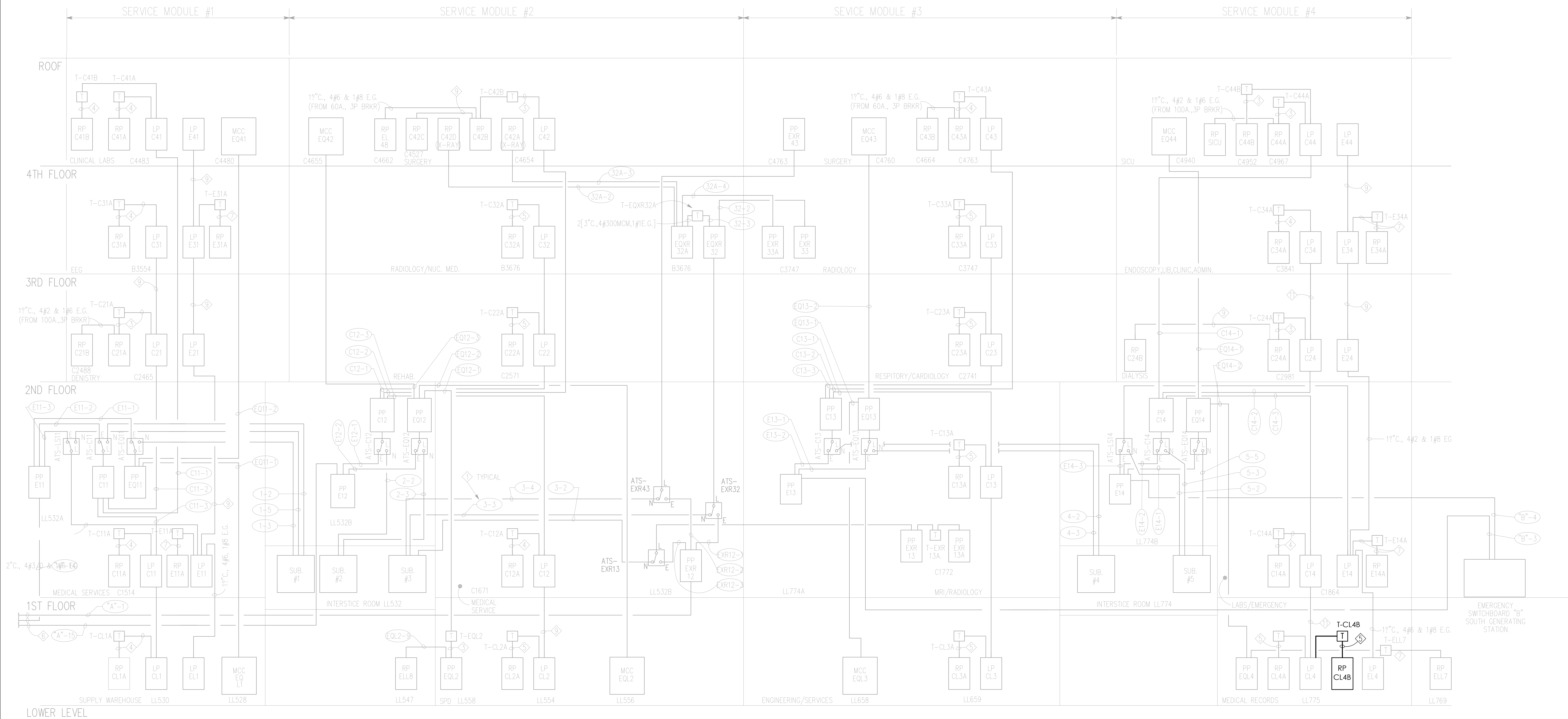
one eighth inch = one foot

EXISTING NOTES FROM EXISTING SHEET E7-8:

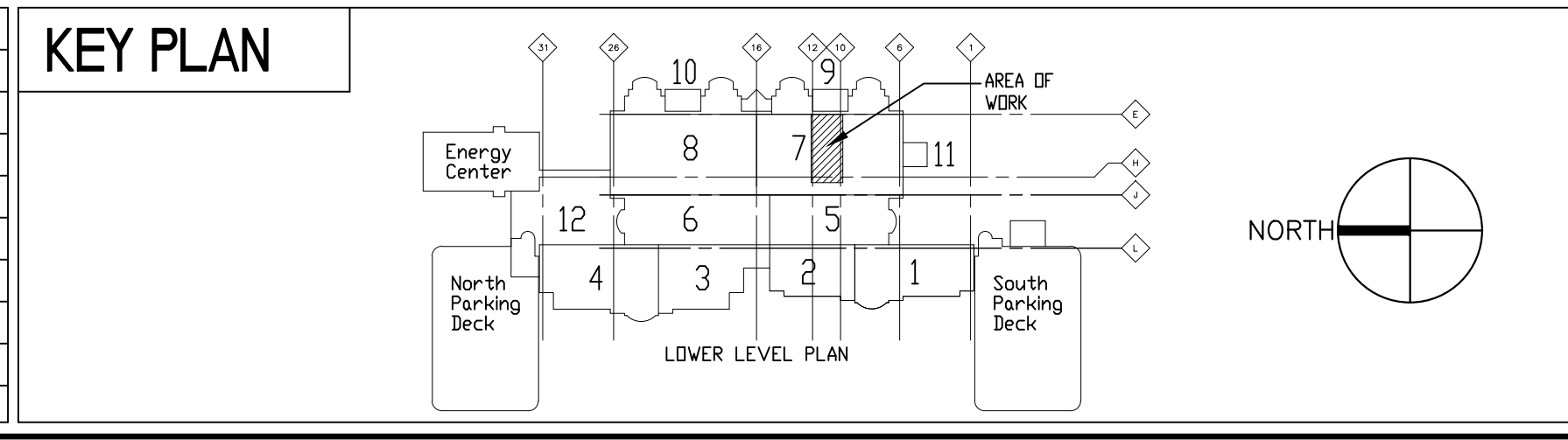
- 3-3 INDICATES SUBSTATION NO. 3 BREAKER NO. 3. REFER TO DWG. E7-3 FOR ONE LINE DIAGRAM AND DWG. E7-12 FOR SCHEDULE.
- GROUND ALL TRANSFORMERS TO BUILDING STEEL AND PRIMARY CIRCUIT E.G.
- PRIMARY FEEDER FOR 45KVA TRANSFORMER: 1" C., 3#4 & 1#8 E.G. SECONDARY FEEDER FOR 45KVA TRANSFORMER: 2" C., 4#3/0 & 1#6 E.G.
- PRIMARY FEEDER FOR 30KVA TRANSFORMER: 1" C., 3#8 & 1#10 E.G. SECONDARY FEEDER FOR 30KVA TRANSFORMER: 1" C., 4#2 & 1#6 E.G.
- PRIMARY FEEDER FOR 15KVA TRANSFORMER: 1" C., 3#10 & 1#10 E.G. SECONDARY FEEDER FOR 15KVA TRANSFORMER: 1" C., 4#8 & 1#6 E.G.
- TO EMERGENCY SWITCHBOARD "A" LOCATED IN ENERGY CENTER.
- PRIMARY FEEDER FOR 9KVA TRANSFORMER: 1" C., 3#12 & 1#12 E.G. SECONDARY FEEDER FOR 9KVA TRANSFORMER: 1" C., 4#8 & 1#10 E.G.
- NORMAL POWER UNIT SUBSTATIONS ARE SHOWN ON THIS DWG. TO INDICATE THE NORMAL FEEDER OF THE ATS'S.
- 1" C., 4#2 & 1#8 E.G.
- PROVIDE EXTRA SIDE GUTTER SPACE FOR PANELS WITH FEEDER TAPS AS DETAILED ON DWG. E9-11.
- 2" C., 4#1 & 1#6 E.G.

GENERAL NOTES

- REFER TO SYMBOLS AND ABBREVIATIONS LISTS ON SHEET NO. E-001.
- REFER TO MOUNTING HEIGHTS AND ELECTRICAL NOTES ON SHEET NO. E-001.
- REFER TO SPECIFICATIONS FOR ADDITIONAL ELECTRICAL REQUIREMENTS.



ISSUE 006 - CD BID	01.20.11
ISSUE 005 - CD OWNER REVIEW	12.17.10
Revisions:	Date



US DEPARTMENT OF VETERANS AFFAIRS
JOHN D. DINGELL
VA MEDICAL CENTER
4646 JOHN R. STREET
DETROIT, MI 48202

ARCHITECT/ENGINEERS:

Kahn

Albert Kahn Associates, Inc.
Albert Kahn Building
7430 Second Ave.
Detroit, Michigan 48202-2798
Albert Kahn Associates, Inc. is a member of the Albert Kahn Family of Companies. © 2007
ALBERT KAHN JOB # 0398-00.000

Drawing Title	EMERGENCY POWER RISER DIAGRAM
Approved Project Director	

Project Title	POLICE SERVICES RELOCATION
Location	DETROIT, MICHIGAN
Date	01-20-2011
Checked	-
Drawn	-
Project Number	553-11-108
Building Number	100
Drawing Number	EP-600B
Dwg. 41 of 50	

Office of Construction and Facilities Management

Department of Veterans Affairs

FULLY SPRINKLERED