

A

B

C

D

E

F

F

A

B

C

D

E

F

F

three inches = one foot

one and one half inches = one foot

one inch = one foot

three quarters inch = one foot

one half inch = one foot

three eighths inch = one foot

one quarter inch = one foot

one eighth inch = one foot

one eighth inch = one foot

one eighth inch = one foot

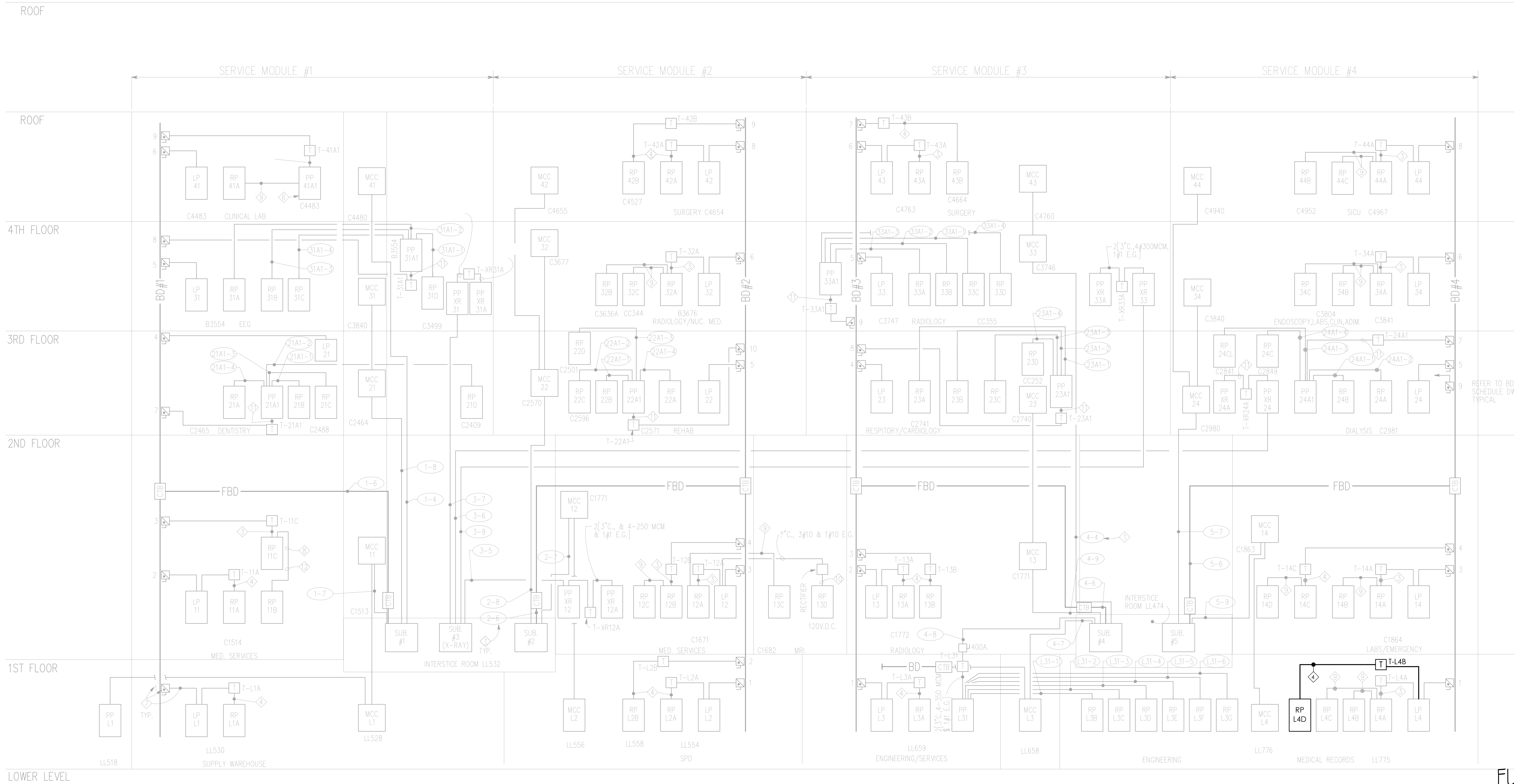
one eighth inch = one foot

EXISTING NOTES FROM EXISTING SHEET E7-5:

- 1-7 INDICATES SUBSTATION NO. 1 BREAKER  
NO. 7. REFER TO DWG. E7-3 FOR ONE LINE  
DIAGRAM AND DWG. E7-12 FOR SCHEDULE.
- GROUND ALL TRANSFORMERS TO BUILDING STEEL.
- PRIMARY FEEDER FOR 45KVA TRANSFORMER:  
1" C., 3#4 & 1#8 E.G.  
SECONDARY FEEDER FOR 45KVA TRANSFORMER:  
2" C., 4#3/0 & 1#6 E.G.
- PRIMARY FEEDER FOR 30KVA TRANSFORMER:  
1" C., 3#8 & 1#10 E.G.  
SECONDARY FEEDER FOR 30KVA TRANSFORMER:  
1" C., 4#2 & 1#6 E.G.
- PRIMARY FEEDER FOR 15KVA TRANSFORMER:  
1" C., 3#10 & 1#10 E.G.  
SECONDARY FEEDER FOR 15KVA TRANSFORMER:  
1" C., 4#6 & 1#8 E.G.
- REFER TO DWG. E7-10 FOR PARTIAL RISER  
DIAGRAM OF PANEL PP-41A1.
- REFER TO BUS DUCT SCHEDULE FOR PLUG-IN BREAKER  
UNIT & FEEDER SIZES. NUMERAL INDICATES POSITION  
ON SCHEDULE.
- PROVIDE EXTRA SIDE GUTTER SPACE FOR PANELS WITH  
FEEDER TAPS AS DETAILED ON DWG. EP-11.
- 1" C., 4#2, 1#8 E.G.
- 1" C., 2#2, 1#8 E.G.
- 3" C., 4#500MCM, 1#3 E.G.
- 1" C., 4#2 & 1#6 E.G.

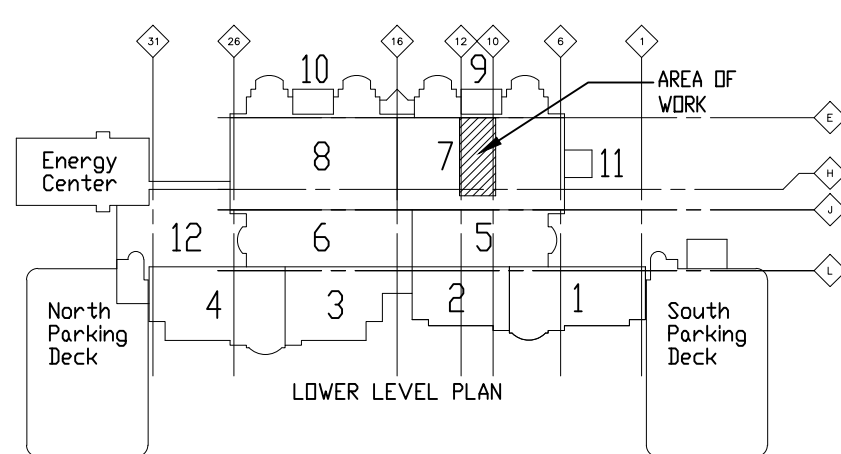
GENERAL NOTES

1. REFER TO SYMBOLS AND ABBREVIATIONS LISTS ON SHEET NO. E-001.
2. REFER TO MOUNTING HEIGHTS AND ELECTRICAL NOTES ON SHEET NO. E-001.
3. REFER TO SPECIFICATIONS FOR ADDITIONAL ELECTRICAL REQUIREMENTS.



REFER TO BD #4  
SCHEDULE DWG. E7-13C  
TYPICAL

KEY PLAN



US DEPARTMENT OF  
VETERANS AFFAIRS  
JOHN D. DINGELL  
VA MEDICAL CENTER  
4646 JOHN R. STREET  
DETROIT, MI 48202

ARCHITECT/ENGINEERS:



Albert Kahn Associates, Inc.  
Albert Kahn Building  
7430 Second Ave.  
Detroit, Michigan 48202-2798  
Albert Kahn Associates, Inc. is a member of  
the Albert Kahn Family of Companies. © 2007  
ALBERT KAHN JOB # 0398-00.000

Drawing Title

NORMAL POWER RISER DIAGRAM

Approved Project Director

Project Title

POLICE SERVICES RELOCATION

Location  
DETROIT, MICHIGAN

Date  
01-20-2011

Checked  
-

Drawn  
-

Project Number

553-11-108

Building Number

100

Drawing Number

EP-600A

Dwg. 40 of 50

Office of  
Construction  
and Facilities  
Management

