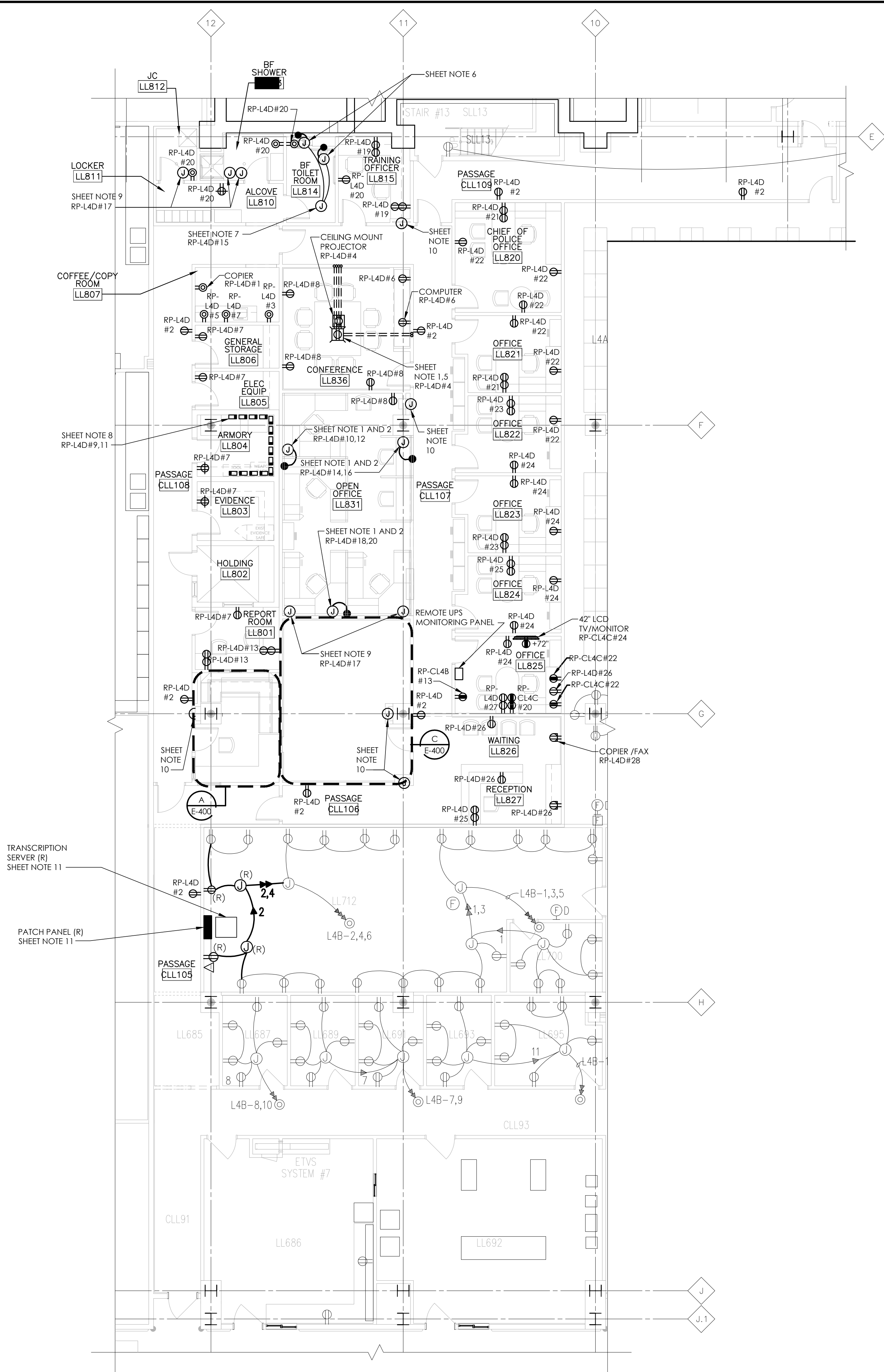


A
three inches = one foot
one and one half inches = one foot
one inch = one foot
three quarters inch = one foot
one half inch = one foot
three eighths inch = one foot
one quarter inch = one foot
one eighth inch = one foot
one eighth inch = one foot

- GENERAL NOTES**
- REFER TO SYMBOLS AND ABBREVIATIONS LISTS ON SHEET NO. E-001.
 - REFER TO MOUNTING HEIGHTS AND ELECTRICAL NOTES ON SHEET NO. E-001.
 - REFER TO SPECIFICATIONS FOR ADDITIONAL ELECTRICAL REQUIREMENTS.
- SHEET NOTES**
- REFER TO SHEET EP-500 FOR TYPICAL DETAIL OF POWER CONNECTIONS TO ENERGIZED FURNITURE.
 - POWER FEED INTO EACH GROUP OF 1 OR 2 WORKSTATIONS SHALL BE (2) 20A CIRCUITS, WITH ONE CIRCUIT DESIGNATED FOR COMPUTER POWER AND ONE CIRCUIT FOR TASK LIGHTS AND CONVENIENCE OUTLETS.
 - POWER FEED INTO EACH GROUP OF 3 OR 4 WORKSTATIONS SHALL BE (3) 20A CIRCUITS, WITH TWO CIRCUITS DESIGNATED FOR COMPUTER POWER AND ONE CIRCUIT FOR TASK LIGHTS AND CONVENIENCE OUTLETS.
 - POWER FEED INTO EACH GROUP OF 5 OR 6 WORKSTATIONS SHALL BE (4) 20A CIRCUITS, WITH THREE CIRCUITS DESIGNATED FOR COMPUTER POWER AND ONE CIRCUIT FOR TASK LIGHTS AND CONVENIENCE OUTLETS.
 - CONFERENCE ROOM TABLE HAS DUAL OUTLETS FOR POWER, TELEPHONE, AND DATA WITH TABLE TOP JUNCTION BOX.
 - JUNCTION BOX AND CONDUIT FOR PLUMBING FIXTURE AUTOMATIC SENSORS. COORDINATE LOCATION AND ROUTING WITH SENSOR SYSTEM INSTALLER.
 - 120 VOLT CIRCUIT TO JUNCTION BOX ABOVE CEILING FOR PLUMBING FIXTURE AUTOMATIC SENSORS.
 - LOCATE OUTLETS IN PLUGSTRIP EVERY 12" ON CENTER AND 6" FROM EACH END. CIRCUIT PLUGSTRIP SO THAT EVERY OTHER RECEPTACLE IS ON A DIFFERENT CIRCUIT. WIRING MOLD "4000" SERIES OR EQUAL BY HUBBELL, PANDUIT, OR MONO-SYSTEMS.
 - CONNECTION ABOVE CEILING FOR TRAP PRIMER.
 - FURNISH AND INSTALL 5-GANG, 3 1/2" DEEP ELECTRICAL BOX FOR WIRELESS SW/TRANSMITTER WITH AN INTERNAL 9V BATTERY AND A 3V LITHIUM BATTERY.
 - REFER TO SPECIFICATION SECTION 01 00 00 FOR CUT OVER INSTRUCTIONS FOR THE TRANSCRIPTION SERVER AND ASSOCIATED EQUIPMENT.



POLICE SERVICES — POWER PLAN
1/8" = 1'-0"

KEY PLAN		ARCHITECT/ENGINEERS:		Drawing Title		Project Title		Project Number		Office of Construction and Facilities Management Department of Veterans Affairs															
		US DEPARTMENT OF VETERANS AFFAIRS JOHN D. DINGELL VA MEDICAL CENTER 4646 JOHN R. STREET DETROIT, MI 48202		ENLARGED LOWER LEVEL POWER PLAN		POLICE SERVICES RELOCATION		553-11-108																	
								Building Number 100																	
Revisions				Albert Kahn Associates, Inc. Albert Kahn Building 7430 Second Ave. Detroit, Michigan 48202-2798 Albert Kahn Associates, Inc. is a member of the Albert Kahn Family of Companies. © 2007 ALBERT KAHN JOB # 0398-00.000		Approved Project Director		Location DETROIT, MICHIGAN		Drawing Number EP-400															
<table><tr><td>ISSUE 006 - CD BID</td><td>01.20.11</td></tr><tr><td>ISSUE 005 - CD OWNER REVIEW</td><td>12.17.10</td></tr><tr><td>ISSUE 004 - DESIGN DEVELOPMENT RECORD</td><td>11.12.10</td></tr><tr><td>ISSUE 003 - DESIGN DEVELOPMENT REVIEW</td><td>09.08.10</td></tr></table>		ISSUE 006 - CD BID	01.20.11			ISSUE 005 - CD OWNER REVIEW	12.17.10	ISSUE 004 - DESIGN DEVELOPMENT RECORD	11.12.10	ISSUE 003 - DESIGN DEVELOPMENT REVIEW	09.08.10					<table><tr><td>Date</td><td>01-20-2011</td><td>Checked</td><td>-</td><td>Drawn</td><td>-</td></tr></table>		Date	01-20-2011	Checked	-	Drawn	-	<table><tr><td>Dwg. 38</td><td>of 50</td></tr></table>	
ISSUE 006 - CD BID	01.20.11																								
ISSUE 005 - CD OWNER REVIEW	12.17.10																								
ISSUE 004 - DESIGN DEVELOPMENT RECORD	11.12.10																								
ISSUE 003 - DESIGN DEVELOPMENT REVIEW	09.08.10																								
Date	01-20-2011	Checked	-	Drawn	-																				
Dwg. 38	of 50																								