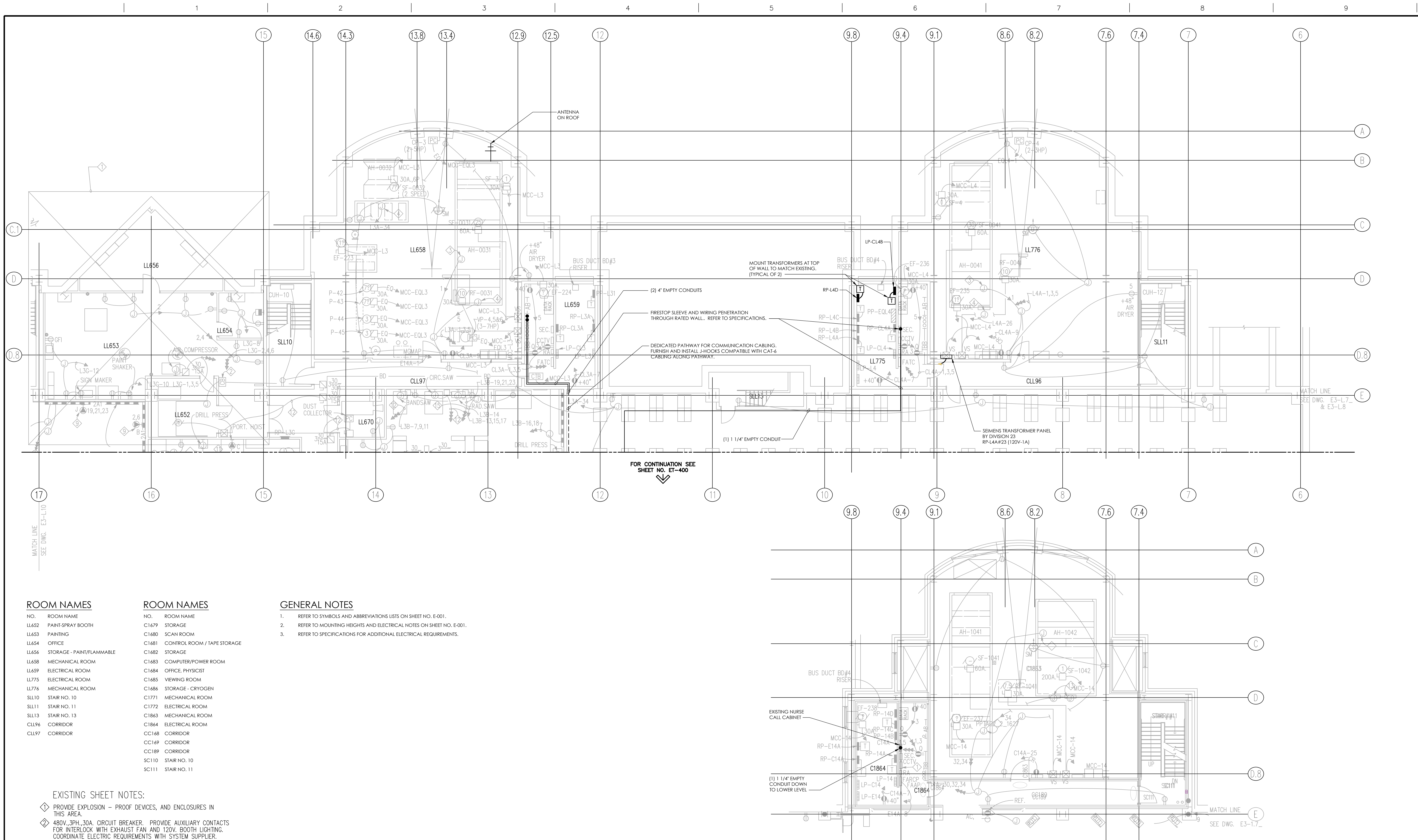


three inches = one foot
one and one half inches = one foot
one inch = one foot
three quarters inch = one foot
one half inch = one foot
three eighths inch = one foot
one quarter inch = one foot
one eighth inch = one foot



ROOM NAMES

NO.	ROOM NAME
LL652	PAINT-SPRAY BOOTH
LL653	PAINTING
LL654	OFFICE
LL656	STORAGE - PAINT/FLAMMABLE
LL658	MECHANICAL ROOM
LL659	ELECTRICAL ROOM
LL775	ELECTRICAL ROOM
LL776	MECHANICAL ROOM
SLL10	STAIR NO. 10
SLL11	STAIR NO. 11
SLL13	STAIR NO. 13
CLL96	CORRIDOR
CLL97	CORRIDOR

ROOM NAMES

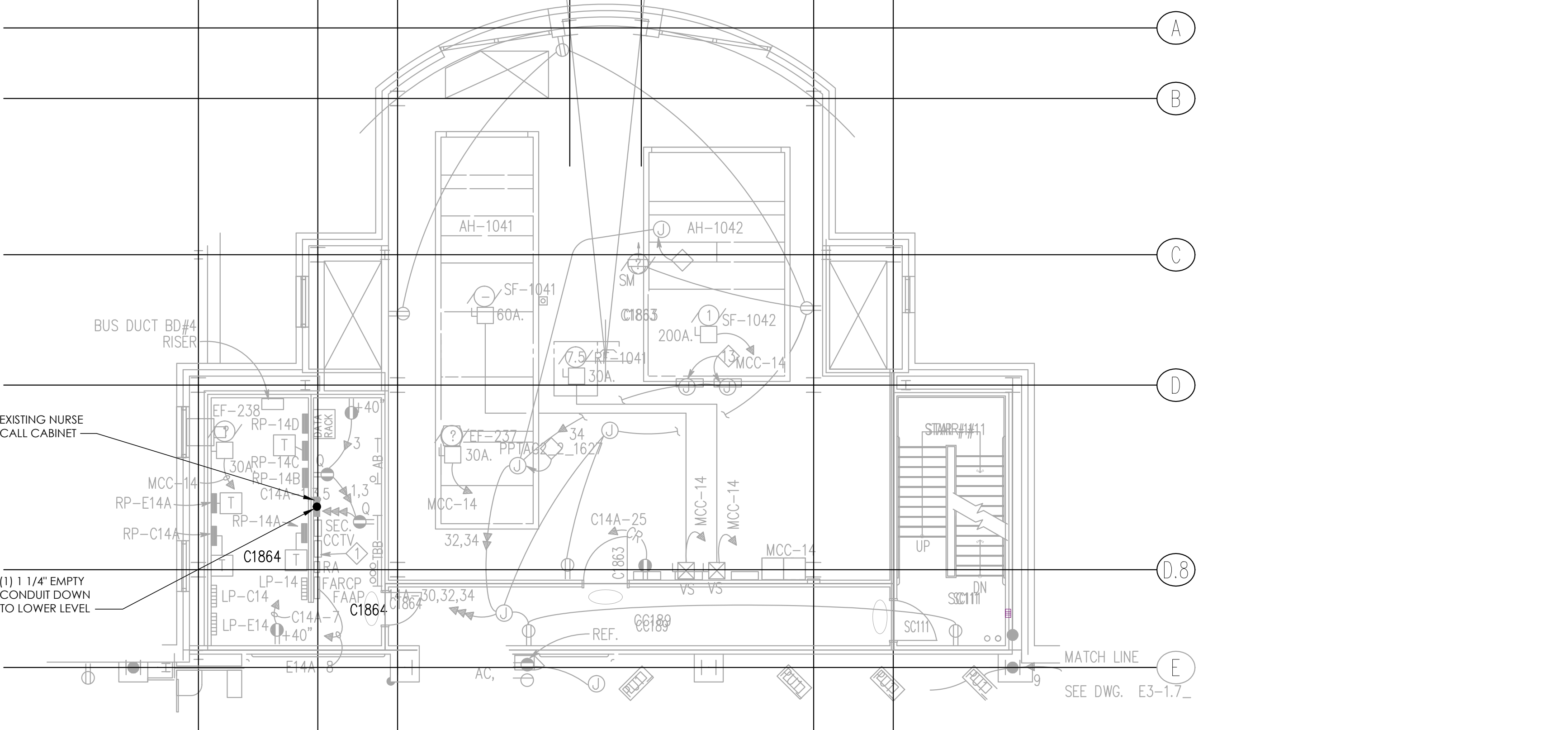
NO.	ROOM NAME
C1679	STORAGE
C1680	SCAN ROOM
C1681	CONTROL ROOM / TAPE STORAGE
C1682	STORAGE
C1683	COMPUTER/POWER ROOM
C1684	OFFICE, PHYSICIST
C1685	VIEWING ROOM
C1686	STORAGE - CRYOGEN
C1771	MECHANICAL ROOM
C1772	ELECTRICAL ROOM
C1863	MECHANICAL ROOM
C1864	ELECTRICAL ROOM
CC168	CORRIDOR
CC169	CORRIDOR
CC189	CORRIDOR
SC110	STAIR NO. 10
SC111	STAIR NO. 11

GENERAL NOTES

1. REFER TO SYMBOLS AND ABBREVIATIONS LISTS ON SHEET NO. E-001.
2. REFER TO MOUNTING HEIGHTS AND ELECTRICAL NOTES ON SHEET NO. E-001.
3. REFER TO SPECIFICATIONS FOR ADDITIONAL ELECTRICAL REQUIREMENTS.

EXISTING SHEET NOTES:

- 1. PROVIDE EXPLOSION - PROOF DEVICES, AND ENCLOSURES IN THIS AREA.
- 2. 480V, 3PH, 30A. CIRCUIT BREAKER. PROVIDE AUXILIARY CONTACTS FOR INTERLOCK WITH EXHAUST FAN AND 120V. BOOTH LIGHTING. COORDINATE ELECTRIC REQUIREMENTS WITH SYSTEM SUPPLIER.
- 3. JUNCTION BOX FOR CONNECTION TO LIGHTS IN AIR HANDLING UNIT.
- 4. JUNCTION BOX FOR CONNECTION TO MECHANICAL CONTROL PANEL.



FIRST FLOOR PARTIAL ELECTRICAL PLAN -ZONE 9 ROOM C1864
1/8" = 1'-0"

<p>KEY PLAN</p>  <p>LOWER LEVEL PLAN</p>	<p>US DEPARTMENT OF VETERANS AFFAIRS JOHN D. DINGELL VA MEDICAL CENTER 4646 JOHN R. STREET DETROIT, MI 48202</p>	<p>ARCHITECT/ENGINEERS:</p>  <p>Albert Kahn Associates, Inc. Albert Kahn Building 7430 Second Ave. Detroit, Michigan 48202-2798 Albert Kahn Associates, Inc. is a member of the Albert Kahn Family of Companies. © 2007 ALBERT KAHN JOB # 0398-00.000</p>	<p>Drawing Title LOWER LEVEL ELECTRICAL PLAN - ZONE 9</p> <p>Approved Project Director</p>	<p>Project Title POLICE SERVICES RELOCATION</p> <p>Location DETROIT, MICHIGAN</p> <p>Date 01-20-2011</p> <p>Checked -</p> <p>Drawn -</p>	<p>Project Number 553-11-108</p> <p>Building Number 100</p> <p>Drawing Number E-10L.9 Dwg. 45 of 50</p>	<p>Office of Construction and Facilities Management</p> 
--	--	--	--	--	---	---