

Steam to Liquid Heat Exchangers

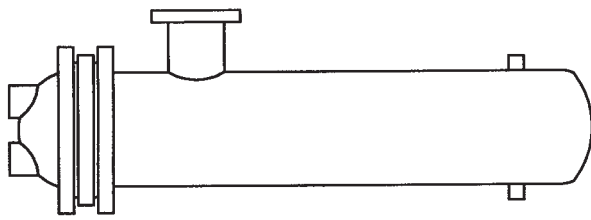


WATER CIRCULATION, FLOW CONTROL, AIR ELIMINATION, FLOW MEASUREMENT/BALANCING, TANKS

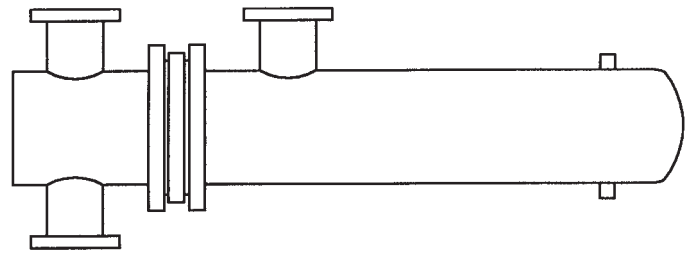
**Do it once.
Do it right.**



This Page was Intentionally Left Blank



4" - 10"



12" - 30"

Features

- Constructed in accordance with ASME Section VIII.
- U-Tube construction.
- High degree of flexibility in materials to meet varying conditions.
- Available in 2, 4, or 6 pass construction.
- All fabrication done in-house.
- National board registration
- Designed and constructed to ASME requirements.
- CRN registration (optional).
- Computerized selections.

Pressure Ratings

	STANDARD	OPTIONAL
Tubes	150 psig	400 psig
Shell	150 psig	250 psig
Test Pressure	300 psig	
Max. Temperature	375°F	450°F

Materials of Construction

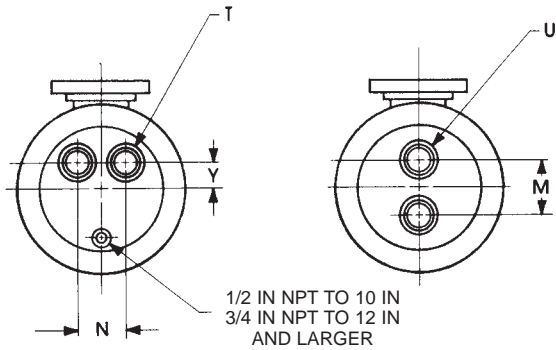
		STANDARD	OPTIONAL
Shell		Steel	304ss, 316ss,
Head	4" - 10"	Cast Iron	Fabricated Steel,
			Cast Bronze,
	12" - 30"	Fabricated Steel	Fabricated 304ss/316ss
Tubes		¾ x 20 BWG Copper	Fabricated 304ss/316ss
			¾ x 18 BWG Copper,
			Steel, 304ss,
			316ss, 90/10 CuNi,
Tube Sheet		Steel	Admiralty
			Bronze, Brass,
			304ss, 316ss,
			90/10 CuNi
Separators		Steel	Bronze, Brass,
			304ss, 316ss,
			90/10 CuNi
Tie Rods		Copper	304ss, 316ss
Nuts and Bolts		Steel	—



Typical Dimensions

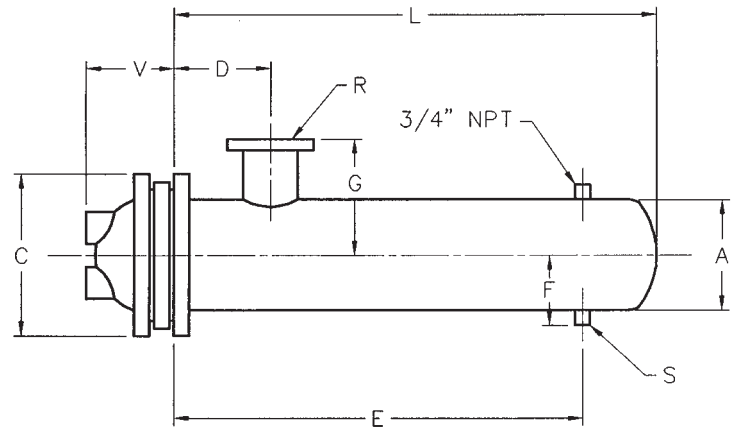
Model Number Key

G 8 2 18 S — Steam to water type
 Tube bundle length
 (this figure x 6 inches)
 Number of tube passes
 Nominal shell diameter
 U tube



4 Pass

2 Pass



(Note: Steam inlet (R) is threaded through G10204S)

4 Inch Diameter

Model Number		Cast Iron Heads						Dimensions (Inches)										G Code Heating Surface (Sq. Ft.)**	Shipping Weight (Lbs.)
2 Pass	4 Pass	2 Pass		4 Pass				2 and 4 Pass											
		M	U	N	T	Y	V	A	C*	D	E	F	G	L	R	S			
E4204S	G4404S	2 ¹ / ₂	1 ¹ / ₂ T	2 ³ / ₈	1T	7 ⁷ / ₈	2 ⁵ / ₈	4 ¹ / ₂	9	5	19 ¹ / ₂	4	4	24 ¹ / ₂	1 ¹ / ₄ T	1T	4.6	65	
E4206S	G4406S	2 ¹ / ₂	1 ¹ / ₂ T	2 ³ / ₈	1T	7 ⁷ / ₈	2 ⁵ / ₈	4 ¹ / ₂	9	5	31 ¹ / ₂	4	4	36 ¹ / ₂	1 ¹ / ₄ T	1T	7.0	75	
E4208S	G4408S	2 ¹ / ₂	1 ¹ / ₂ T	2 ³ / ₈	1T	7 ⁷ / ₈	2 ⁵ / ₈	4 ¹ / ₂	9	5	43 ¹ / ₂	4	4	48 ¹ / ₂	1 ¹ / ₄ T	1T	9.3	84	
E4210S	G4410S	2 ¹ / ₂	1 ¹ / ₂ T	2 ³ / ₈	1T	7 ⁷ / ₈	2 ⁵ / ₈	4 ¹ / ₂	9	5	55 ¹ / ₂	4	4	60 ¹ / ₂	1 ¹ / ₄ T	1T	11.7	94	
E4212S	G4412S	2 ¹ / ₂	1 ¹ / ₂ T	2 ³ / ₈	1T	7 ⁷ / ₈	2 ⁵ / ₈	4 ¹ / ₂	9	5	67 ¹ / ₂	4	3 ⁷ / ₈	72 ¹ / ₂	1 ¹ / ₂ T	1T	14.1	104	
E4214S	G4414S	2 ¹ / ₂	1 ¹ / ₂ T	2 ³ / ₈	1T	7 ⁷ / ₈	2 ⁵ / ₈	4 ¹ / ₂	9	5	79 ¹ / ₂	4	3 ³ / ₄	84 ¹ / ₂	1 ¹ / ₂ T	1T	16.4	114	
E4216S	G4416S	2 ¹ / ₂	1 ¹ / ₂ T	2 ³ / ₈	1T	7 ⁷ / ₈	2 ⁵ / ₈	4 ¹ / ₂	9	5	91 ¹ / ₂	4	3 ³ / ₄	96 ¹ / ₂	1 ¹ / ₂ T	1T	18.8	124	
E4218S	G4418S	2 ¹ / ₂	1 ¹ / ₂ T	2 ³ / ₈	1T	7 ⁷ / ₈	2 ⁵ / ₈	4 ¹ / ₂	9	5	103 ¹ / ₂	4	3 ³ / ₄	108 ¹ / ₂	1 ¹ / ₂ T	1T	21.1	134	
E4220S	G4420S	2 ¹ / ₂	1 ¹ / ₂ T	2 ³ / ₈	1T	7 ⁷ / ₈	2 ⁵ / ₈	4 ¹ / ₂	9	5	115 ¹ / ₂	4	3 ³ / ₄	120 ¹ / ₂	1 ¹ / ₂ T	1T	23.5	144	

6 Inch Diameter

E6204S	G6404S	4	2T	3 ³ / ₄	1 ¹ / ₂ T	1 ¹ / ₄	2 ⁷ / ₈	6 ⁵ / ₈	11	5	18 ¹ / ₂	4 ⁷ / ₈	4 ⁷ / ₈	25	1 ¹ / ₂ T	1T	9.1	120
E6206S	G6406S	4	2T	3 ³ / ₄	1 ¹ / ₂ T	1 ¹ / ₄	2 ⁷ / ₈	6 ⁵ / ₈	11	5	30 ¹ / ₂	4 ⁷ / ₈	4 ⁷ / ₈	37	2T	1T	13.8	148
E6208S	G6408S	4	2T	3 ³ / ₄	1 ¹ / ₂ T	1 ¹ / ₄	2 ⁷ / ₈	6 ⁵ / ₈	11	5	42 ¹ / ₂	4 ⁷ / ₈	5 ³ / ₄	49	2 ¹ / ₂	1T	18.5	182
E6210S	G6410S	4	2T	3 ³ / ₄	1 ¹ / ₂ T	1 ¹ / ₄	2 ⁷ / ₈	6 ⁵ / ₈	11	5	54 ¹ / ₂	4 ⁷ / ₈	5 ³ / ₄	61	2 ¹ / ₂	1T	23.2	207
E6212S	G6412S	4	2T	3 ³ / ₄	1 ¹ / ₂ T	1 ¹ / ₄	2 ⁷ / ₈	6 ⁵ / ₈	11	5	66 ¹ / ₂	4 ⁷ / ₈	5 ⁹ / ₁₆	73	3T	1T	27.9	235
E6214S	G6414S	4	2T	3 ³ / ₄	1 ¹ / ₂ T	1 ¹ / ₄	2 ⁷ / ₈	6 ⁵ / ₈	11	5	78 ¹ / ₂	4 ⁷ / ₈	5 ⁹ / ₁₆	85	3T	1T	32.6	262
E6216S	G6416S	4	2T	3 ³ / ₄	1 ¹ / ₂ T	1 ¹ / ₄	2 ⁷ / ₈	6 ⁵ / ₈	11	5	90 ¹ / ₂	4 ⁷ / ₈	5 ⁹ / ₁₆	97	3T	1T	37.3	290
E6218S	G6418S	4	2T	3 ³ / ₄	1 ¹ / ₂ T	1 ¹ / ₄	2 ⁷ / ₈	6 ⁵ / ₈	11	5	102 ¹ / ₂	4 ⁷ / ₈	5 ⁹ / ₁₆	109	3T	1T	42.1	318
E6220S	G6420S	4	2T	3 ³ / ₄	1 ¹ / ₂ T	1 ¹ / ₄	2 ⁷ / ₈	6 ⁵ / ₈	11	5	114 ¹ / ₂	4 ⁷ / ₈	5 ⁹ / ₁₆	121	3T	1T	46.8	346

8 Inch Diameter

E8204S	G8404S	5	3T	4	2T	2	3 ³ / ₈	8 ⁵ / ₈	13 ¹ / ₂	8	18	6	6	24	2T	1T	16.5	192
E8206S	G8406S	5	3T	4	2T	2	3 ³ / ₈	8 ⁵ / ₈	13 ¹ / ₂	8	30	6	6 ⁷ / ₈	36	2 ¹ / ₂ T	1T	25.1	234
E8208S	G8408S	5	3T	4	2T	2	3 ³ / ₈	8 ⁵ / ₈	13 ¹ / ₂	8	42	6	6 ¹³ / ₁₆	48	3T	1T	33.7	283
E8210S	G8410S	5	3T	4	2T	2	3 ³ / ₈	8 ⁵ / ₈	13 ¹ / ₂	8	54	6	9 ¹ / ₁₆	60	4F	1T	42.4	326
E8212S	G8412S	5	3T	4	2T	2	3 ³ / ₈	8 ⁵ / ₈	13 ¹ / ₂	8	66	6	9 ¹ / ₁₆	72	4F	1 ¹ / ₄ T	51.0	369
E8214S	G8414S	5	3T	4	2T	2	3 ³ / ₈	8 ⁵ / ₈	13 ¹ / ₂	8	78	6	9 ¹ / ₁₆	84	4F	1 ¹ / ₄ T	59.7	390
E8216S	G8416S	5	3T	4	2T	2	3 ³ / ₈	8 ⁵ / ₈	13 ¹ / ₂	8	90	6	9 ¹ / ₁₆	96	6F	1 ¹ / ₄ T	68.3	453
E8218S	G8418S	5	3T	4	2T	2	3 ³ / ₈	8 ⁵ / ₈	13 ¹ / ₂	8	102	6	9 ¹ / ₁₆	108	6F	1 ¹ / ₄ T	76.9	496
E8220S	G8420S	5	3T	4	2T	2	3 ³ / ₈	8 ⁵ / ₈	13 ¹ / ₂	8	114	6	9 ¹ / ₁₆	120	6F	1 ¹ / ₄ T	85.6	540

* Dimensions are ANSI. For TEMA, consult factory.

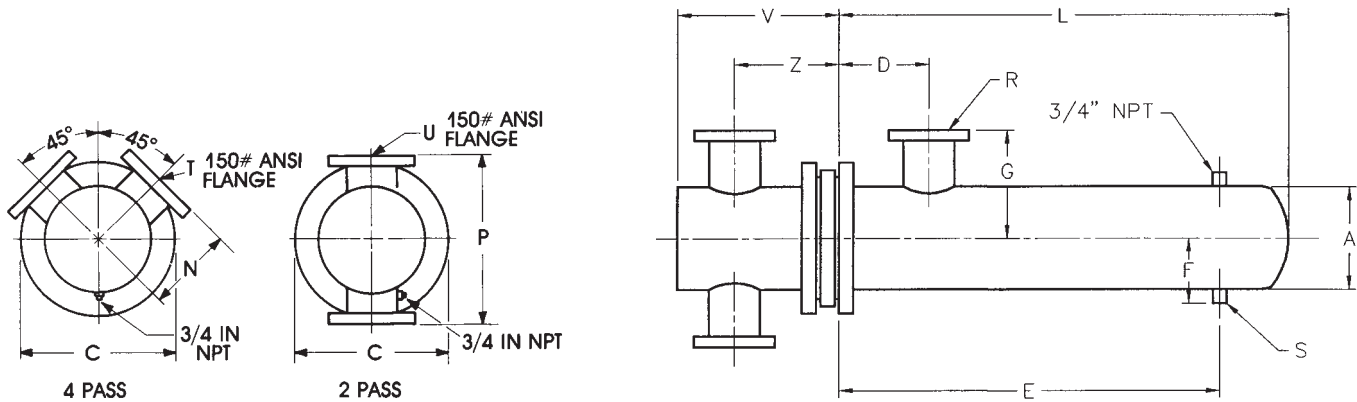
** E Code heating surfaces are equal or greater. Please consult submittals for actual heating surfaces.

10 Inch Diameter

Model Number		Cast Iron Heads						Dimensions (Inches)										G Code Heating Surface (Sq. Ft.)**	Shipping Weight (Lbs.)
2 Pass	4 Pass	2 Pass		4 Pass				2 and 4 Pass											
		M	U	N	T	Y	V	A	C*	D	E	F	G	L	R	S			
E10204S	G10404S	6 ¹ / ₄	3T	5 ¹ / ₂	3T	2 ¹ / ₄	4	10 ³ / ₄	16	8	17	7 ¹ / ₈	7 ¹⁵ / ₁₆	24	3T	1T	26.8	300	
E10206S	G10406S	6 ¹ / ₄	3T	5 ¹ / ₂	3T	2 ¹ / ₄	4	10 ³ / ₄	16	8	29	7 ¹ / ₈	10 ³ / ₈	36	4F	1T	40.9	353	
E10208S	G10408S	6 ¹ / ₄	3T	5 ¹ / ₂	3T	2 ¹ / ₄	4	10 ³ / ₄	16	8	41	7 ¹ / ₈	10 ³ / ₈	48	4F	1 ¹ / ₄ T	55.0	415	
E10210S	G10410S	6 ¹ / ₄	3T	5 ¹ / ₂	3T	2 ¹ / ₄	4	10 ³ / ₄	16	8	53	7 ¹ / ₈	10 ³ / ₈	60	6F	1 ¹ / ₄ T	69.2	476	
E10212S	G10412S	6 ¹ / ₄	3T	5 ¹ / ₂	3T	2 ¹ / ₄	4	10 ³ / ₄	16	8	65	7 ¹ / ₈	10 ³ / ₈	72	6F	1 ¹ / ₂ T	83.3	537	
E10214S	G10414S	6 ¹ / ₄	3T	5 ¹ / ₂	3T	2 ¹ / ₄	4	10 ³ / ₄	16	8	77	7 ¹ / ₈	10 ³ / ₈	84	6F	1 ¹ / ₂ T	97.5	598	
E10216S	G10416S	6 ¹ / ₄	3T	5 ¹ / ₂	3T	2 ¹ / ₄	4	10 ³ / ₄	16	8	88 ¹ / ₂	7 ¹ / ₈	10 ³ / ₈	96	6F	2T	111.6	660	
E10218S	G10418S	6 ¹ / ₄	3T	5 ¹ / ₂	3T	2 ¹ / ₄	4	10 ³ / ₄	16	8	100 ¹ / ₂	7 ¹ / ₈	10 ³ / ₈	108	6F	2T	125.7	721	
E10220S	G10420S	6 ¹ / ₄	3T	5 ¹ / ₂	3T	2 ¹ / ₄	4	10 ³ / ₄	16	8	112 ¹ / ₂	7 ¹ / ₈	10 ³ / ₈	120	6F	2T	139.9	782	

* Dimensions are ANSI. For TEMA, consult factory.

** E Code heating surfaces are equal or greater. Please consult submittals for actual heating surfaces.



12 Inch Diameter

Model Number		Fabricated Steel Heads								Dimensions (Inches)										G Code Heating Surface (Sq. Ft.)**	Shipping Weight (Lbs.)
2 Pass	4 Pass	2 Pass				4 Pass				2 and 4 Pass											
		P	U	V	Z	N	T	V	Z	A	C*	D	E	F	G	L	R	S			
E12206S	G12406S	24	4F	14 ⁷ / ₈	10 ¹ / ₈	12	3F	14 ⁷ / ₈	10 ³ / ₈	12 ³ / ₄	19	10	29	8 ¹ / ₈	11 ⁷ / ₈	36 ¹ / ₄	4F	1 ¹ / ₄ T	58.6	510	
E12208S	G12408S	24	4F	14 ⁷ / ₈	10 ¹ / ₈	12	3F	14 ⁷ / ₈	10 ³ / ₈	12 ³ / ₄	19	10	41	8 ¹ / ₈	11 ⁷ / ₈	48 ¹ / ₄	6F	1 ¹ / ₄ T	79.0	596	
E12210S	G12410S	24	4F	14 ⁷ / ₈	10 ¹ / ₈	12	3F	14 ⁷ / ₈	10 ³ / ₈	12 ³ / ₄	19	10	53	8 ¹ / ₈	11 ⁷ / ₈	60 ¹ / ₄	6F	1 ¹ / ₂ T	99.5	681	
E12212S	G12412S	24	4F	14 ⁷ / ₈	10 ¹ / ₈	12	3F	14 ⁷ / ₈	10 ³ / ₈	12 ³ / ₄	19	10	65	8 ¹ / ₈	11 ⁷ / ₈	72 ¹ / ₄	6F	2T	119.9	772	
E12214S	G12414S	24	4F	14 ⁷ / ₈	10 ¹ / ₈	12	3F	14 ⁷ / ₈	10 ³ / ₈	12 ³ / ₄	19	10	77	8 ¹ / ₈	11 ¹⁵ / ₁₆	84 ¹ / ₄	8F	2T	140.3	857	
E12216S	G12416S	24	4F	14 ⁷ / ₈	10 ¹ / ₈	12	3F	14 ⁷ / ₈	10 ³ / ₈	12 ³ / ₄	19	10	88	9	11 ¹⁵ / ₁₆	96 ¹ / ₄	8F	2 ¹ / ₂ T	160.8	941	
E12218S	G12418S	24	4F	14 ⁷ / ₈	10 ¹ / ₈	12	3F	14 ⁷ / ₈	10 ³ / ₈	12 ³ / ₄	19	10	100	9	11 ¹⁵ / ₁₆	108 ¹ / ₄	8F	2 ¹ / ₂ T	181.2	1027	
E12220S	G12420S	24	4F	14 ⁷ / ₈	10 ¹ / ₈	12	3F	14 ⁷ / ₈	10 ³ / ₈	12 ³ / ₄	19	10	112	9	11 ¹⁵ / ₁₆	120 ¹ / ₄	8F	2 ¹ / ₂ T	201.6	1111	

14 Inch Diameter

E14206S	G14406S	26	6F	18 ³ / ₈	12 ³ / ₈	13	4F	18 ³ / ₈	11 ⁵ / ₈	14	21	10 ¹ / ₂	29	8 ³ / ₄	12 ⁷ / ₈	37 ¹ / ₄	6F	1 ¹ / ₄ T	75.7	568
E14208S	G14408S	26	6F	18 ³ / ₈	12 ³ / ₈	13	4F	18 ³ / ₈	11 ⁵ / ₈	14	21	10 ¹ / ₂	40 ¹ / ₂	8 ³ / ₄	12 ⁷ / ₈	49 ¹ / ₄	6F	2T	102.4	664
E14210S	G14410S	26	6F	18 ³ / ₈	12 ³ / ₈	13	4F	18 ³ / ₈	11 ⁵ / ₈	14	21	10 ¹ / ₂	52 ¹ / ₂	8 ³ / ₄	12 ⁷ / ₈	61 ¹ / ₄	6F	2T	129.1	756
E14212S	G14412S	26	6F	18 ³ / ₈	12 ³ / ₈	13	4F	18 ³ / ₈	11 ⁵ / ₈	14	21	10 ¹ / ₂	64 ¹ / ₂	8 ³ / ₄	12 ¹⁵ / ₁₆	73 ¹ / ₄	8F	2T	155.8	847
E14214S	G14414S	26	6F	18 ³ / ₈	12 ³ / ₈	13	4F	18 ³ / ₈	11 ⁵ / ₈	14	21	10 ¹ / ₂	76	9 ⁵ / ₈	12 ¹⁵ / ₁₆	85 ¹ / ₄	8F	2 ¹ / ₂ T	182.5	937
E14216S	G14416S	26	6F	18 ³ / ₈	12 ³ / ₈	13	4F	18 ³ / ₈	11 ⁵ / ₈	14	21	10 ¹ / ₂	88	9 ⁵ / ₈	12 ¹⁵ / ₁₆	97 ¹ / ₄	8F	2 ¹ / ₂ T	209.2	1029
E14218S	G14418S	26	6F	18 ³ / ₈	12 ³ / ₈	13	4F	18 ³ / ₈	11 ⁵ / ₈	14	21	10 ¹ / ₂	100	9 ⁵ / ₈	13	109 ¹ / ₄	10F	2 ¹ / ₂ T	236.0	1120
E14220S	G14420S	26	6F	18 ³ / ₈	12 ³ / ₈	13	4F	18 ³ / ₈	11 ⁵ / ₈	14	21	10 ¹ / ₂	112	9 ⁵ / ₈	13	121 ¹ / ₄	10F	3T	262.7	1212

16 Inch Diameter

E16206S	G16406S	28½	6F	19⅝	13⅝	14¼	4F	19⅝	12⅛	16	23½	11	28½	9¾	14¼	37	6F	1½T	104.5	745
E16208S	G16408S	28½	6F	19⅝	13⅝	14¼	4F	19⅝	12⅛	16	23½	11	40	9¾	14¼	49	6F	2T	141.4	863
E16210S	G16410S	28½	6F	19⅝	13⅝	14¼	4F	19⅝	12⅛	16	23½	11	52	10⅝	14⅝	61	8F	2½T	178.4	981
E16212S	G16412S	28½	6F	19⅝	13⅝	14¼	4F	19⅝	12⅛	16	23½	11	64	10⅝	14⅝	73	8F	2½T	215.3	1105
E16214S	G16414S	28½	6F	19⅝	13⅝	14¼	4F	19⅝	12⅛	16	23½	11	76	10⅝	14⅜	85	10F	2½T	252.2	1187
E16216S	G16416S	28½	6F	19⅝	13⅝	14¼	4F	19⅝	12⅛	16	23½	11	87½	10⅝	14⅜	97	10F	3T	289.1	1305
E16218S	G16418S	28½	6F	19⅝	13⅝	14¼	4F	19⅝	12⅛	16	23½	11	99½	10⅝	14⅜	109	10F	3T	326.0	1424
E16220S	G16420S	28½	6F	19⅝	13⅝	14¼	4F	19⅝	12⅛	16	23½	11	111½	10⅝	14⅜	121	10F	3T	363.0	1541

* Dimensions are ANSI. For TEMA, consult factory.

** E Code heating surfaces are equal or greater. Please consult submittals for actual heating surfaces.

Typical Dimensions

18 Inch Diameter

Model Number		Fabricated Steel Heads								Dimensions (Inches)										G Code Heating Surface (Sq. Ft.)**	Shipping Weight (Lbs.)		
2 Pass	4 Pass	2 Pass				4 Pass				2 and 4 Pass													
		P	U	V	Z	N	T	V	Z	A	C*	D	E	F	G	L	R	S					
E18206S	G18406S	30	6F	20 ¹ / ₄	14	15	4F	20 ¹ / ₄	12 ³ / ₄	18	25	13	27 ¹ / ₂	10 ³ / ₄	15 ¹ / ₄	36 ¹ / ₂	6F	2T	130.7	902			
E18208S	G18408S	30	6F	20 ¹ / ₄	14	15	4F	20 ¹ / ₄	12 ³ / ₄	18	25	13	39 ¹ / ₂	10 ³ / ₄	15 ⁵ / ₁₆	48 ¹ / ₂	8F	2T	177.0	1044			
E18210S	G18410S	30	6F	20 ¹ / ₄	14	15	4F	20 ¹ / ₄	12 ³ / ₄	18	25	13	51	11 ⁵ / ₈	15 ⁵ / ₁₆	60 ¹ / ₂	8F	2 ¹ / ₂ T	223.4	1183			
E18212S	G18412S	30	6F	20 ¹ / ₄	14	15	4F	20 ¹ / ₄	12 ³ / ₄	18	25	13	62 ¹ / ₂	11 ⁵ / ₈	15 ³ / ₈	72 ¹ / ₂	10F	3T	269.7	1326			
E18214S	G18414S	30	6F	20 ¹ / ₄	14	15	4F	20 ¹ / ₄	12 ³ / ₄	18	25	13	74 ¹ / ₂	11 ⁵ / ₈	15 ³ / ₈	84 ¹ / ₂	10F	3T	316.1	1445			
E18216S	G18416S	30	6F	20 ¹ / ₄	14	15	4F	20 ¹ / ₄	12 ³ / ₄	18	25	13	86 ¹ / ₂	11 ⁵ / ₈	15 ³ / ₈	96 ¹ / ₂	10F	3T	362.4	1586			
E18218S	G18418S	30	6F	20 ¹ / ₄	14	15	4F	20 ¹ / ₄	12 ³ / ₄	18	25	13	98 ¹ / ₂	11 ⁵ / ₈	15 ³ / ₈	108 ¹ / ₂	12F	3T	408.8	1732			
E18220S	G18420S	30	6F	20 ¹ / ₄	14	15	4F	20 ¹ / ₄	12 ³ / ₄	18	25	13	109 ¹ / ₂	14	15 ³ / ₈	120 ¹ / ₂	12F	4F	455.1	1871			

20 Inch Diameter

E20206S	G20406S	32 ¹ / ₂	6F	21 ⁵ / ₈	15 ¹ / ₈	16 ¹ / ₄	4F	21 ⁵ / ₈	14 ¹ / ₈	20	27 ¹ / ₂	13 ¹ / ₂	27 ¹ / ₂	11 ³ / ₄	16 ⁷ / ₁₆	36 ³ / ₄	8F	2T	163.9	1060
E20208S	G20408S	32 ¹ / ₂	6F	21 ⁵ / ₈	15 ¹ / ₈	16 ¹ / ₄	4F	21 ⁵ / ₈	14 ¹ / ₈	20	27 ¹ / ₂	13 ¹ / ₂	39	12 ¹¹ / ₁₆	16 ⁷ / ₁₆	48 ³ / ₄	8F	2 ¹ / ₂ T	223.6	1226
E20210S	G20410S	32 ¹ / ₂	6F	21 ⁵ / ₈	15 ¹ / ₈	16 ¹ / ₄	4F	21 ⁵ / ₈	14 ¹ / ₈	20	27 ¹ / ₂	13 ¹ / ₂	50 ¹ / ₂	12 ¹¹ / ₁₆	16 ¹ / ₂	60 ³ / ₄	10F	3T	283.3	1386
E20212S	G20412S	32 ¹ / ₂	6F	21 ⁵ / ₈	15 ¹ / ₈	16 ¹ / ₄	4F	21 ⁵ / ₈	14 ¹ / ₈	20	27 ¹ / ₂	13 ¹ / ₂	62 ¹ / ₂	12 ¹¹ / ₁₆	16 ¹ / ₂	72 ³ / ₄	10F	3T	343.0	1547
E20214S	G20414S	32 ¹ / ₂	6F	21 ⁵ / ₈	15 ¹ / ₈	16 ¹ / ₄	4F	21 ⁵ / ₈	14 ¹ / ₈	20	27 ¹ / ₂	13 ¹ / ₂	74 ¹ / ₂	12 ¹¹ / ₁₆	16 ¹ / ₂	84 ³ / ₄	12F	3T	402.7	1706
E20216S	G20416S	32 ¹ / ₂	6F	21 ⁵ / ₈	15 ¹ / ₈	16 ¹ / ₄	4F	21 ⁵ / ₈	14 ¹ / ₈	20	27 ¹ / ₂	13 ¹ / ₂	85 ¹ / ₂	15	16 ¹ / ₂	96 ³ / ₄	12F	4F	462.4	1867
E20218S	G20418S	32 ¹ / ₂	6F	21 ⁵ / ₈	15 ¹ / ₈	16 ¹ / ₄	4F	21 ⁵ / ₈	14 ¹ / ₈	20	27 ¹ / ₂	13 ¹ / ₂	97 ¹ / ₂	15	16 ¹ / ₂	108 ³ / ₄	12F	4F	522.2	2041
E20220S	G20420S	32 ¹ / ₂	6F	21 ⁵ / ₈	15 ¹ / ₈	16 ¹ / ₄	4F	21 ⁵ / ₈	14 ¹ / ₈	20	27 ¹ / ₂	13 ¹ / ₂	109 ¹ / ₂	15	16 ¹ / ₂	120 ³ / ₄	14F	4F	581.9	2202

22 Inch Diameter

E22206S	G22406S	35	10F	26 ¹ / ₂	17 ³ / ₄	17 ¹ / ₄	8F	26 ¹ / ₂	17	22	29 ¹ / ₂	14	22 ³ / ₈	16	17	36 ¹ / ₂	12F	4F	193.5	1212
E22208S	G22408S	35	10F	26 ¹ / ₂	17 ³ / ₄	17 ¹ / ₄	8F	26 ¹ / ₂	17	22	29 ¹ / ₂	14	34 ³ / ₈	16	17	48 ¹ / ₂	12F	4F	265.0	1396
E22210S	G22410S	35	10F	26 ¹ / ₂	17 ³ / ₄	17 ¹ / ₄	8F	26 ¹ / ₂	17	22	29 ¹ / ₂	14	46 ³ / ₈	16	17	60 ¹ / ₂	12F	4F	336.5	1580
E22212S	G22412S	35	10F	26 ¹ / ₂	17 ³ / ₄	17 ¹ / ₄	8F	26 ¹ / ₂	17	22	29 ¹ / ₂	14	58 ³ / ₈	16	17	72 ¹ / ₂	12F	4F	408.0	1764
E22214S	G22414S	35	10F	26 ¹ / ₂	17 ³ / ₄	17 ¹ / ₄	8F	26 ¹ / ₂	17	22	29 ¹ / ₂	14	70 ³ / ₈	16	17	84 ¹ / ₂	12F	4F	479.5	1948
E22216S	G22416S	35	10F	26 ¹ / ₂	17 ³ / ₄	17 ¹ / ₄	8F	26 ¹ / ₂	17	22	29 ¹ / ₂	14	82 ³ / ₈	16	17	96 ¹ / ₂	12F	4F	551.0	2132
E22218S	G22418S	35	10F	26 ¹ / ₂	17 ³ / ₄	17 ¹ / ₄	8F	26 ¹ / ₂	17	22	29 ¹ / ₂	15	94 ³ / ₈	16	18	108 ¹ / ₂	14F	5F	622.5	2316
E22220S	G22420S	35	10F	26 ¹ / ₂	17 ³ / ₄	17 ¹ / ₄	8F	26 ¹ / ₂	17	22	29 ¹ / ₂	15	106 ³ / ₈	16	18	120 ¹ / ₂	14F	5F	694.0	2500

24 Inch Diameter

E24206S	G24406S	37 ¹ / ₂	10F	27 ⁵ / ₈	18 ⁷ / ₈	18 ¹ / ₂	8F	27 ⁵ / ₈	17 ⁷ / ₈	24	32	14	25	17	18	38	12F	4F	236	1492
E24208S	G24408S	37 ¹ / ₂	10F	27 ⁵ / ₈	18 ⁷ / ₈	18 ¹ / ₂	8F	27 ⁵ / ₈	17 ⁷ / ₈	24	32	14	37	17	18	50	12F	4F	324	1710
E24210S	G24410S	37 ¹ / ₂	10F	27 ⁵ / ₈	18 ⁷ / ₈	18 ¹ / ₂	8F	27 ⁵ / ₈	17 ⁷ / ₈	24	32	14	49	17	18	62	12F	4F	412	1928
E24212S	G24412S	37 ¹ / ₂	10F	27 ⁵ / ₈	18 ⁷ / ₈	18 ¹ / ₂	8F	27 ⁵ / ₈	17 ⁷ / ₈	24	32	14	61	17	18	74	12F	4F	500	2146
E24214S	G24414S	37 ¹ / ₂	10F	27 ⁵ / ₈	18 ⁷ / ₈	18 ¹ / ₂	8F	27 ⁵ / ₈	17 ⁷ / ₈	24	32	14	73	17	18	86	12F	4F	588	2364
E24216S	G24416S	37 ¹ / ₂	10F	27 ⁵ / ₈	18 ⁷ / ₈	18 ¹ / ₂	8F	27 ⁵ / ₈	17 ⁷ / ₈	24	32	14	85	17	18	98	12F	4F	676	2582
E24218S	G24418S	37 ¹ / ₂	10F	27 ⁵ / ₈	18 ⁷ / ₈	18 ¹ / ₂	8F	27 ⁵ / ₈	17 ⁷ / ₈	24	32	15	97	17	19	110	14F	5F	764	2800
E24220S	G24420S	37 ¹ / ₂	10F	27 ⁵ / ₈	18 ⁷ / ₈	18 ¹ / ₂	8F	27 ⁵ / ₈	17 ⁷ / ₈	24	32	15	109	17	19	122	14F	5F	852	3018

26 Inch Diameter

E26206S	G26406S	37	12F	28 ³ / ₄	19	18 ¹ / ₄	8F	28 ³ / ₄	17	26	34 ¹ / ₄	15	23 ³ / ₄	18	20	36	14F	5F	288.6	1792
E26208S	G26408S	37	12F	28 ³ / ₄	19	18 ¹ / ₄	8F	28 ³ / ₄	17	26	34 ¹ / ₄	15	35 ³ / ₄	18	20	48	14F	5F	393.4	2036
E26210S	G26410S	37	12F	28 ³ / ₄	19	18 ¹ / ₄	8F	28 ³ / ₄	17	26	34 ¹ / ₄	15	47 ³ / ₄	18	20	60	14F	5F	500.2	2280
E26212S	G26412S	37	12F	28 ³ / ₄	19	18 ¹ / ₄	8F	28 ³ / ₄	17	26	34 ¹ / ₄	15	59 ³ / ₄	18	20	72	14F	5F	607.0	2524
E26214S	G26414S	37	12F	28 ³ / ₄	19	18 ¹ / ₄	8F	28 ³ / ₄	17	26	34 ¹ / ₄	15	71 ³ / ₄	18	20	84	14F	5F	713.8	2768
E26216S	G26416S	37	12F	28 ³ / ₄	19	18 ¹ / ₄	8F	28 ³ / ₄	17	26	34 ¹ / ₄	15	83 ³ / ₄	18	20	96	14F	5F	820.6	3012
E26218S	G26418S	37	12F	28 ³ / ₄	19	18 ¹ / ₄	8F	28 ³ / ₄	17	26	34 ¹ / ₄	16	95 ³ / ₄	19 ¹ / ₂	21	108	16F	6F	927.4	3256
E26220S	G26420S	37	12F	28 ³ / ₄	19	18 ¹ / ₄	8F	28 ³ / ₄	17	26	34 ¹ / ₄	16	107 ³ / ₄	19 ¹ / ₂	21	120	16F	6F	1034.0	3500

* Dimensions are ANSI. For TEMA, consult factory. ** E Code heating surfaces are equal or greater. Please consult submittals for actual heating surfaces.

30 Inch Diameter

Model Number		Fabricated Steel Heads								Dimensions (Inches)									G Code Heating Surface (Sq. Ft.)**	Shipping Weight (Lbs.)
2 Pass	4 Pass	2 Pass				4 Pass				2 and 4 Pass										
		P	U	V	Z	N	T	V	Z	A	C*	D	E	F	G	L	R	S		
E30206S	G30406S	42	14F	31 ⁷ / ₈	21 ¹ / ₈	20 ³ / ₄	10F	31 ⁷ / ₈	19 ⁵ / ₈	30	38 ³ / ₄	16	23	21 ¹ / ₂	22	38	16F	6F	377.6	2567
E30208S	G30408S	42	14F	31 ⁷ / ₈	21 ¹ / ₈	20 ³ / ₄	10F	31 ⁷ / ₈	19 ⁵ / ₈	30	38 ³ / ₄	16	35	21 ¹ / ₂	22	50	16F	6F	520.5	2886
E30210S	G30410S	42	14F	31 ⁷ / ₈	21 ¹ / ₈	20 ³ / ₄	10F	31 ⁷ / ₈	19 ⁵ / ₈	30	38 ³ / ₄	16	47	21 ¹ / ₂	22	62	16F	6F	663.4	3205
E30212S	G30412S	42	14F	31 ⁷ / ₈	21 ¹ / ₈	20 ³ / ₄	10F	31 ⁷ / ₈	19 ⁵ / ₈	30	38 ³ / ₄	16	59	21 ¹ / ₂	22	74	16F	6F	806.3	3524
E30214S	G30414S	42	14F	31 ⁷ / ₈	21 ¹ / ₈	20 ³ / ₄	10F	31 ⁷ / ₈	19 ⁵ / ₈	30	38 ³ / ₄	16	71	21 ¹ / ₂	22	86	16F	6F	949.2	3843
E30216S	G30416S	42	14F	31 ⁷ / ₈	21 ¹ / ₈	20 ³ / ₄	10F	31 ⁷ / ₈	19 ⁵ / ₈	30	38 ³ / ₄	16	83	21 ¹ / ₂	22	98	16F	6F	1092.0	4162
E30218S	G30418S	42	14F	31 ⁷ / ₈	21 ¹ / ₈	20 ³ / ₄	10F	31 ⁷ / ₈	19 ⁵ / ₈	30	38 ³ / ₄	17	95	21 ¹ / ₂	22	110	18F	8F	1235.0	4481
E30220S	G30420S	42	14F	31 ⁷ / ₈	21 ¹ / ₈	20 ³ / ₄	10F	31 ⁷ / ₈	19 ⁵ / ₈	30	38 ³ / ₄	17	107	21 ¹ / ₂	22	122	18F	8F	1378.0	4800

* Dimensions are ANSI. For TEMA, consult factory.

** E Code heating surfaces are equal or greater. Please consult submittals for actual heating surfaces.

Sizing and Selection

Refer to Selection Guide 200-1A for manual selection procedure.

Computer selections available through TACO Representatives.

Following data is required:

1. Steam pressure at heat exchanger.
2. Flow in tubes (GPM).
3. Type of fluid in tubes.
4. Properties of fluids (if other than water).
5. Temperature in.
6. Temperature out.
7. Fouling factor.

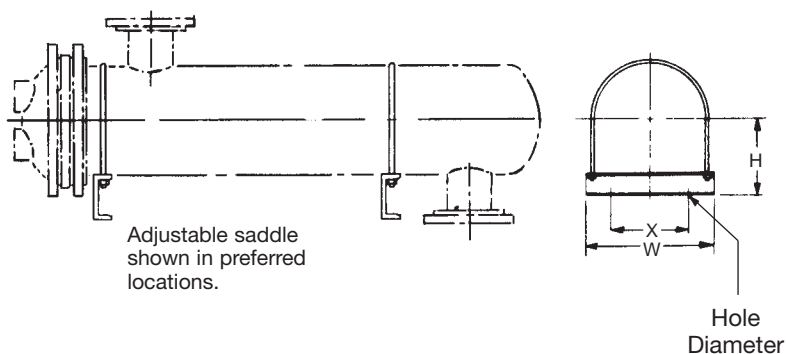
Requests for sizing and design of custom/industrial heat exchangers may be submitted directly to our Engineering Office. Simply select the Process Heat Transfer Icon at our Internet home page (taco-hvac.com).



TACO's Product Selection Software "TACONET" supports sizing and selection of shell and tube Heat Exchangers, Pumps and Expansion Tanks. This software is available from your local representative or may also be downloaded from our website at taco-hvac.com.

Typical Saddle Dimensions (Optional)

Unit Size	Dimensions (inches)			
	H	W	X	Hole Dia.
4	5 ¹ / ₄	6 ¹⁵ / ₁₆	5 ¹ / ₂	5 ⁵ / ₈
6	6 ⁵ / ₁₆	9 ¹ / ₄	7 ¹ / ₂	5 ⁵ / ₈
8	7 ⁵ / ₁₆	11 ¹ / ₄	9	5 ⁵ / ₈
10	8 ³ / ₈	13 ⁵ / ₈	10	5 ⁵ / ₈
12	9 ³ / ₈	15 ⁵ / ₈	11	5 ⁵ / ₈
14	10	17	12	3 ³ / ₄
16	12	19	13	3 ³ / ₄
18	13	21	14	3 ³ / ₄
20	14	23	14	3 ³ / ₄
22	17	25	18	3 ³ / ₄
24	18	27	19	3 ³ / ₄
26	19	30	20	3 ³ / ₄
30	21	33	22	3 ³ / ₄



Note: Two adjustable U-bolt type saddles furnished when specified only.

Do it Once. Do it Right.

TACO, INC., 1160 Cranston Street, Cranston, RI 02920 Telephone: (401) 942-8000 FAX: (401) 942-2360.
TACO (Canada), Ltd., 6180 Ordan Drive, Mississauga, Ontario L5T 2B3. Telephone: 905/564-9422. FAX: 905/564-9436.

Visit our web site at: <http://www.taco-hvac.com>

Printed in USA
Copyright 2000
TACO, Inc.