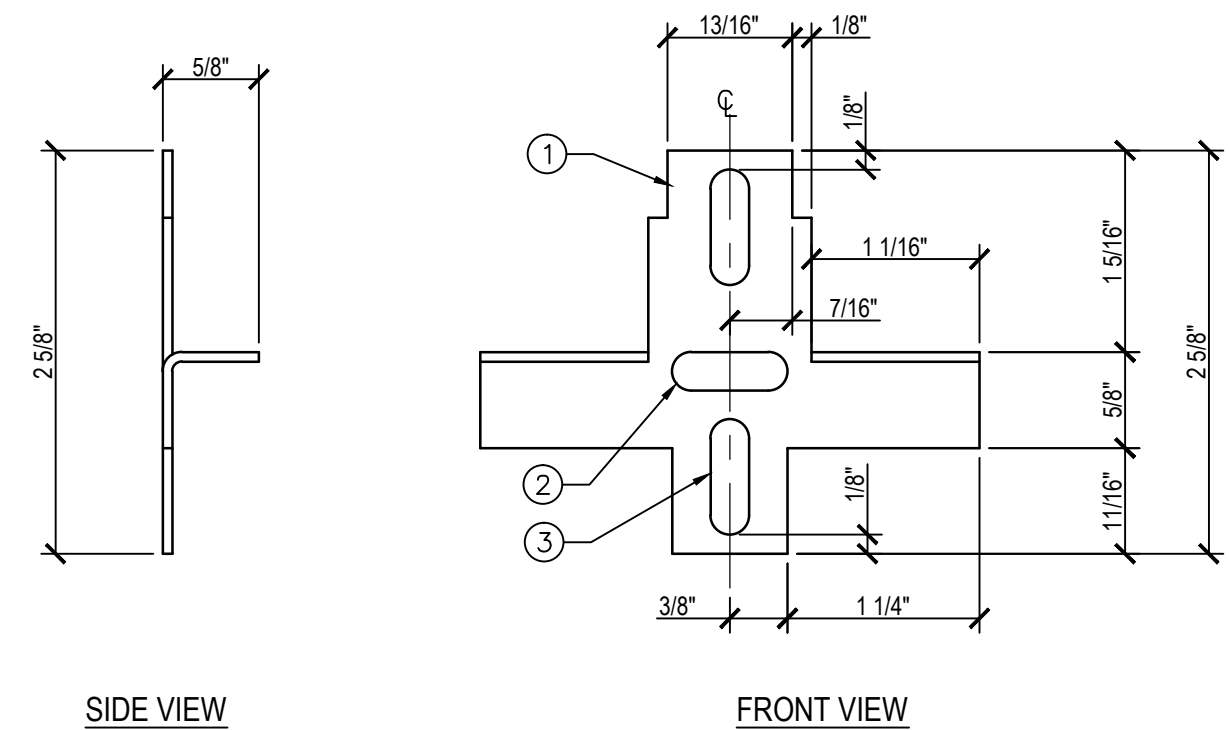


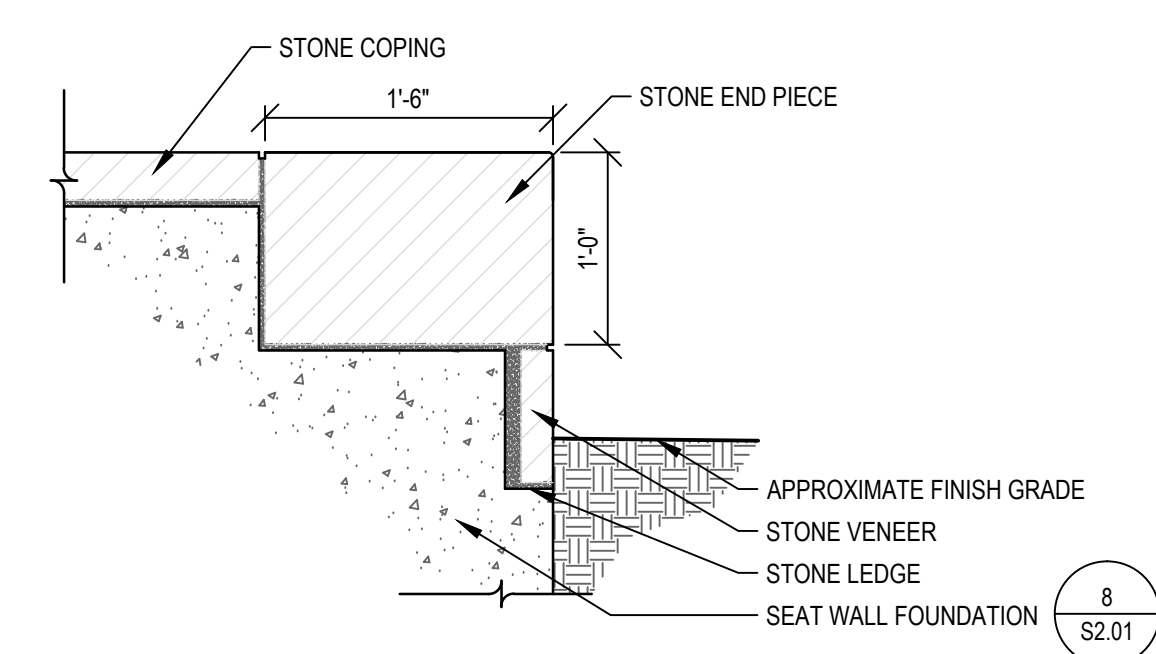
- ① 11-1/4"x7-3/4"x3/4" MARBLE MEMORIAL WALL MARKER.
- ② 1" DIA. STAINLESS STEEL ROSETTE WITH NEOPRENE WASHER TO MATCH COLUMARIUM UNIT ROSETTE.
- ③ STAINLESS STEEL TAMPER-PROOF ROSETTE PIN.
- ④ 16 GAUGE, TYPE 302 STAINLESS STEEL ROSETTE PLATE.
- ⑤ 2-3/8"x1/2" STAINLESS STEEL SPRING PLATE.
- ⑥ 1/4"-20 TAMPER-PROOF SCREW.
- ⑦ PLASTIC WASHER
- ⑧ 5/16" O.D. STAINLESS STEEL CENTER POST W/ (2) 1/8" CHANNELS TO ALLOW HORIZONTAL MOVEMENT ONLY IN ROSETTE PLATE SLOT. THREADED INTERIOR TO RECEIVE TAMPER-PROOF ROSETTE PIN.
- ⑨ RECESSED PORTION OF PRECAST WALL UNIT.
- ⑩ CONTRACTOR TO FIELD DRILL PRECAST WITH A 3/8" DRILL BIT TO 1-1/8" DEEP TO RECEIVE THE 1/4"-20 TAMPER-PROOF SCREW WITH THREADED INTERIOR.

ROSETTE ATTACHMENT SECTION

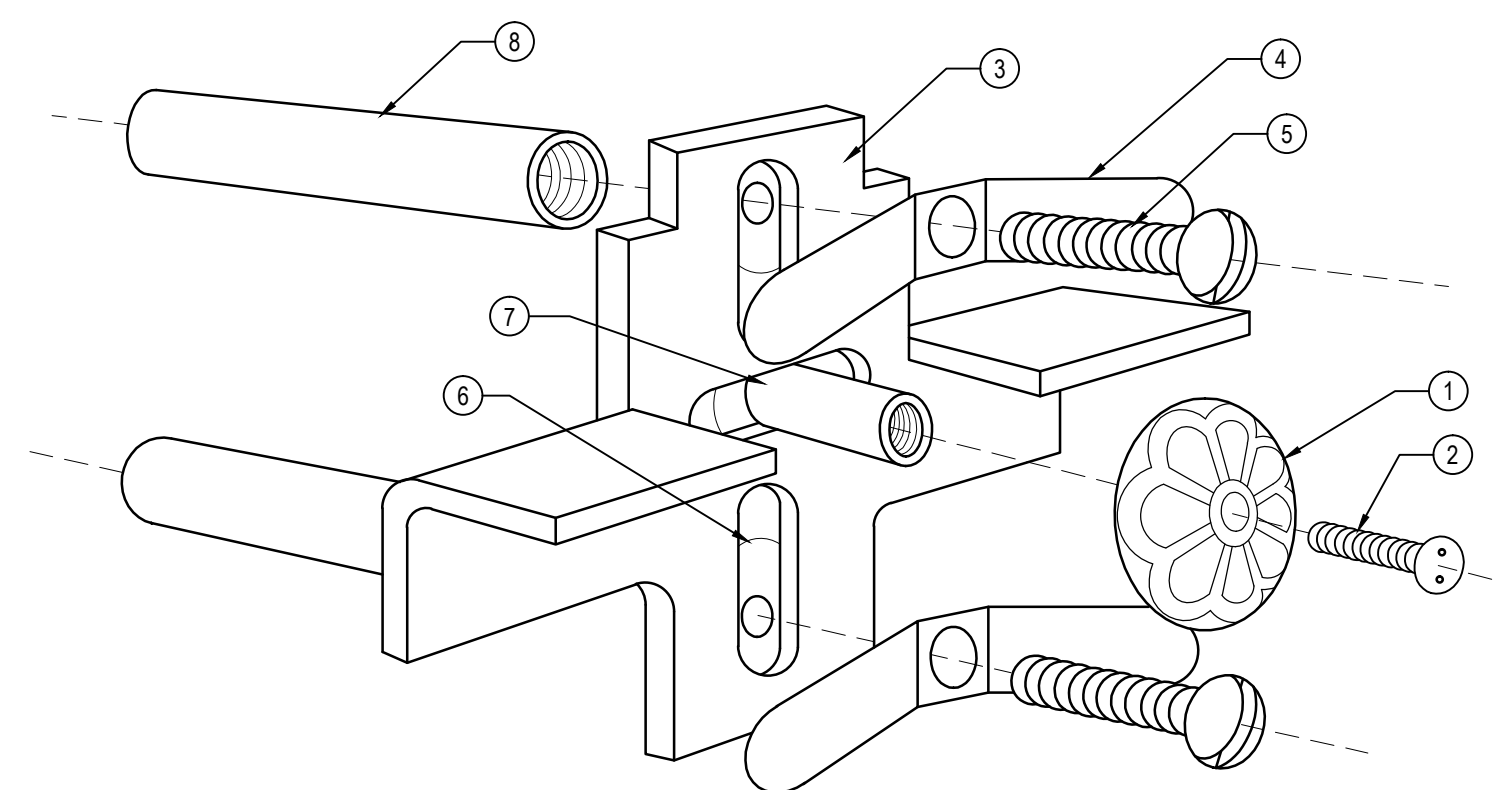


- ① 16 GAUGE, TYPE 302 STAINLESS STEEL ROSETTE PLATE.
- ② 3/4" X 1/4" HORIZONTAL SLOT FOR STAINLESS STEEL CENTER POST SECURED WITH STAINLESS STEEL WASHER AND SCREW AT BACK TO RECEIVE TAMPER-PROOF ROSETTE PIN.
- ③ 3/4" X 1/4" VERTICAL SLOT FOR 1/4"DIA. TAMPER-PROOF SCREW TO SECURE STAINLESS STEEL SPRING PLATE WITH ROSETTE PLATE TO DROP-IN ANCHOR IN PRECAST WALL UNIT.

NOTE:
CONTRACTOR TO SUBMIT SHOP DRAWINGS FOR APPROVAL PRIOR TO ORDERING AND MANUFACTURING OF PRODUCT.





4 SEAT WALL END SECTION
L10.04 SECTION 1" = 1'-0"



- ① 1" DIA. STAINLESS STEEL ROSETTE W/ NEOPRENE WASHER TO MATCH COLUMBIAN UNIT ROSETTE.
- ② STAINLESS STEEL TAMPER-PROOF ROSETTE PIN.
- ③ 16 GAUGE, TYPE 302 STAINLESS STEEL ROSETTE PLATE.
- ④ 2-3/4" x 1/2" STAINLESS STEEL SPRING PLATE.
- ⑤ 1/4"-20 TAMPER-PROOF SCREW.
- ⑥ PLASTIC WASHER
- ⑦ 5/16" O.D. STAINLESS STEEL CENTER POST W/ (2) 1/8" CHANNELS TO ALLOW HORIZONTAL MOVEMENT ONLY IN ROSETTE PLATE SLOT. THREADED INTERIOR TO RECEIVE TAMPER-PROOF ROSETTE PIN.
- ⑧ CONTRACTOR TO FIELD DRILL PRECAST WITH A 3/8" DRILL BIT TO 1-1/8" DEEP TO RECEIVE THE 1/4"-20 TAMPER-PROOF SCREW WITH THREADED INTERIOR.

ROSETTE ATTACHMENT - ISOMETRIC

NTS

<div style="border: 1px solid black; width: 100px; height: 100px; margin: 0 auto;"></div>	<p>CONSULTANTS:</p> <div style="display: flex; justify-content: space-around; align-items: center;"> <div style="text-align: center;"> <p>Anderson Engineering of Minnesota, LLC</p> <p>13605 1st AVENUE NORTH, SUITE 100, PLYMOUTH, MN 55441</p> <p>Tel. (763) 412-4000 FAX (763) 412-4090</p> </div> <div style="text-align: center;"> <p>Aqua Engineering, Inc.</p> <p>Innovative Water Solutions</p> <p>4803 Innovation Drive Fort Collins, Colorado 80525 Phone (970) 229-9668 FAX (970) 226-3855</p> </div> <div style="text-align: center;"> <p>JJR</p> <p>landscape architecture planning urban design civil engineering environmental science</p> <p>JJR, LLC 110 MILLER AVENUE, ANN ARBOR, MICHIGAN 48104 734.662.4457 T 734.662.0779 F www.jjr-us.com</p> </div> <div style="text-align: center;"> <p>RUSHING</p> <p>Engineering - Essentials - Delivery</p> </div> <div style="text-align: center;"> <p>ALLEGIANCE GROUP, LLC</p> </div> <div style="text-align: center;"> <p>BLACKBIRD</p> </div> </div>		<p>ARCHITECT/ENGINEERS:</p> <div style="text-align: center;"> <p>kpff Consulting Engineers</p> <p>1601 Fifth Avenue, Suite 1600 Seattle, Washington 98101-3665 (206) 622-5822 Fax (206) 622-8130</p> </div>	<p>Drawing Title</p> <p style="text-align: center;">MEMORIAL WALL DETAILS</p>	<p>Project Title</p> <p style="text-align: center;">TAHOMA NATIONAL CEMETERY PHASE 2 GRAVESITE DEVELOPMENT</p> <p style="text-align: center;">18000 SE 240TH STREET, KENT WASHINGTON</p>	<p>Project Number</p> <p style="text-align: center;">919PC2007</p>	<p style="text-align: center;">Office of Construction and Facilities Management</p>
<p>Amendment 4</p> <p>Revisions:</p>				<p>Approved Project Director</p>	<p>Location</p> <p style="text-align: center;">KENT, WASHINGTON</p>	<p>Drawing Reference Number</p> <p style="text-align: center;">148</p>	<p>Drawing Number</p> <p style="text-align: center;">L10.04</p>
<p>11.11.2011</p> <p>Date</p>					<p>Date</p> <p>9-15-2011</p>	<p>Checked</p> <p>CQ/PE</p>	<p>Drawn</p> <p>JS/JM</p>
<p>1</p>							<p> Department of Veterans Affairs</p>