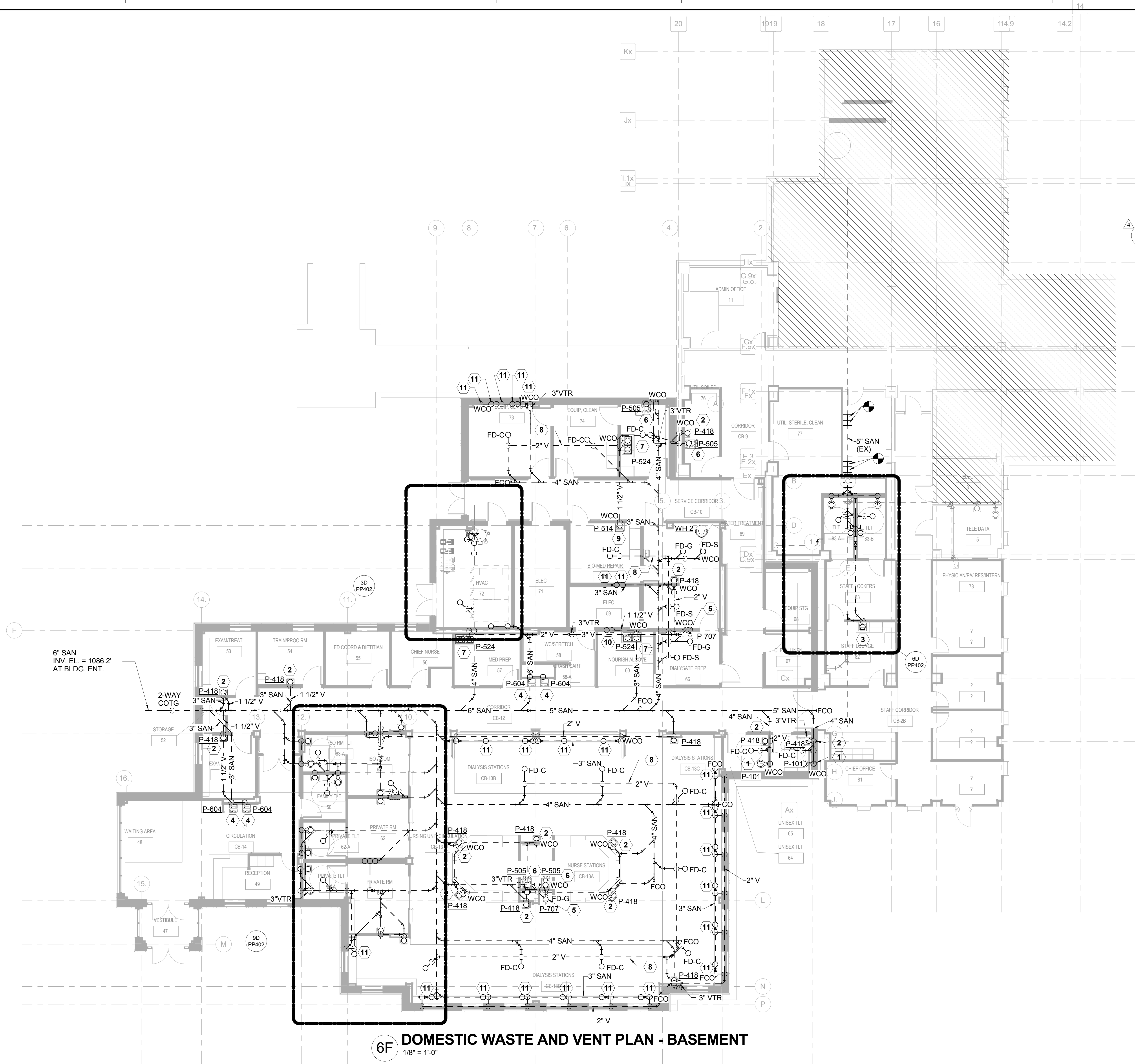


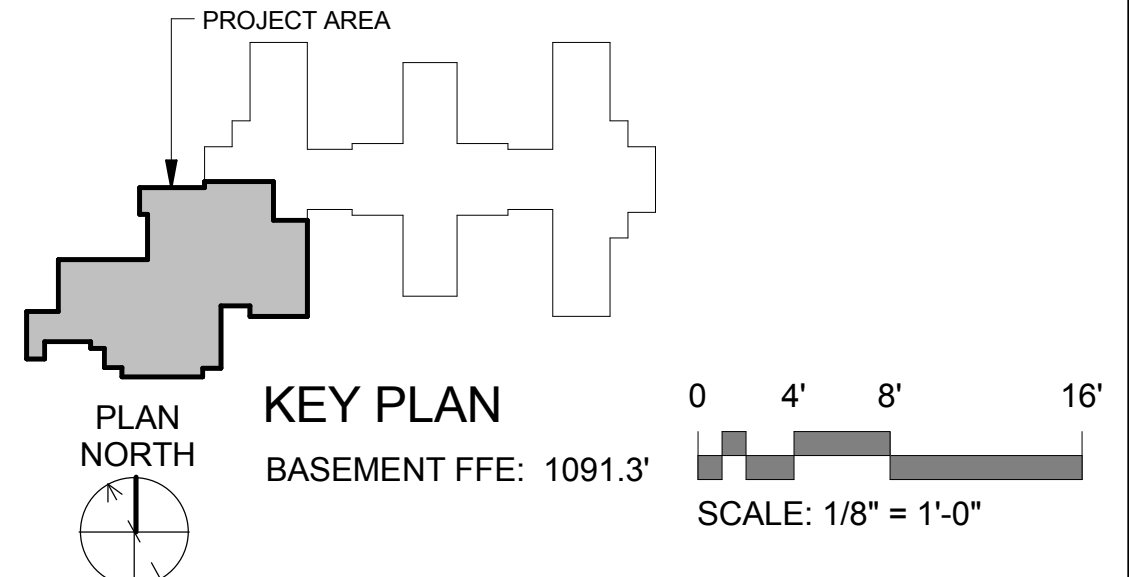
A  
three inches = one foot  
1  
B  
one and one half inches = one foot  
2  
C  
one inch = one foot  
2  
D  
three quarters inch = one foot  
4  
E  
one half inch = one foot  
8  
F  
one quarter inch = one foot  
16  
5/17/2016 11:12:47 AM

- (X) DRAWING KEYED NOTES**
- 1 PROVIDE NEW ADA COMPLIANT FLOOR-MOUNTED TOILET (P-101). PROVIDE NEW 4" SAN AND 2" VENT PIPING TO FIXTURE.
  - 2 PROVIDE NEW WALL-HUNG LAVATORY AND FAUCET (P-418). PROVIDE NEW 1 1/2" SAN AND 1 1/2" VENT PIPING TO FIXTURE.
  - 3 PROVIDE NEW SINGLE COMPARTMENT CRS SINK AND FAUCET (P-528). PROVIDE NEW 1 1/2" SAN AND 1 1/2" VENT PIPING TO FIXTURE.
  - 4 PROVIDE TWO NEW SINGLE UNIT WATER COOLERS, ONE AT STD. HEIGHT AND THE OTHER AT ADA HEIGHT. PROVIDE NEW 2" SAN AND 1 1/2" VENT PIPING TO FIXTURE.
  - 5 PROVIDE NEW FREE-STANDING EMERGENCY SHOWER AND EYE/FACE WASH (P-707). PROVIDE NEW 1 1/2" SAN AND 1 1/2" VENT PIPING TO FIXTURE.
  - 6 PROVIDE NEW CLINIC SERVICE SINK (P-505). PROVIDE NEW 4" SAN AND 2" VENT TO FIXTURE.
  - 7 PROVIDE NEW DOUBLE COMPARTMENT CRS SINK AND FAUCET (P-524). PROVIDE NEW 1 1/2" SAN AND 1 1/2" VENT PIPING TO FIXTURE.
  - 8 2" UNDER SLAB VENT PIPING FROM FD. ROUTE TO VTR.
  - 9 PROVIDE NEW WALL-HUNG SERVICE SINK AND FAUCET (P-514). PROVIDE NEW 1 1/2" SAN AND 1 1/2" VENT PIPING TO FIXTURE.
  - 10 PROVIDE NEW FLOOR STANDING ICE MAKER, PROVIDE NEW 1 1/2" SAN AND 1 1/2" VENT PIPING FROM UNIT.
  - 11 CONTRACTOR TO INSTALL VA FURNISHED/SUPPLIED RECESSED DIALYSIS UNIT. COORDINATE WORK WITH WATER TREATMENT CONTRACTOR THROUGH COR. PROVIDE 1 1/2" SAN AND VENT PIPING AND CONNECT TO UNIT.

- (X) DEDUCT ALTERNATES**
1. ALTERNATE BID ITEM 7: WATER CLOSET (P-101), LAVATORY (P-418) AND FLOOR DRAINS TO BE OMITTED FROM ROOM 83-A AND 83-B IN ALT. DESIGN.
  2. ALTERNATE BID ITEM 7: CRS SINK (P-528) TO BE OMITTED FROM ROOM 83 IN ALT. DESIGN.
  3. ALTERNATE BID ITEM 8: WATER COOLERS (P-604) TO BE REMOVED FROM WAITING AREA (48) AND RELOCATED ELSEWHERE ON BASEMENT LEVEL IN ALT. DESIGN.
  4. ALTERNATE BID ITEM 8: WATER CLOSET (P-101) AND LAVATORY (P-418) IN FAMILY TOILET (50) TO BE RELOCATED IN ALT. DESIGN TO OPPOSITE (SOUTH) WALL.



**6F DOMESTIC WASTE AND VENT PLAN - BASEMENT**  
1/8" = 1'-0"



**CONSTRUCTION DOCUMENT  
FULLY SPRINKLERED**

Revisions: 4 ADDENDUM #4 5/16/16 Date	 Corporate Office: 766 Middle St. Fairhope, AL 36532 Phone: 251.990.5778 Fax: 251.990.3716	Approved: Patient Safety Nurse	Approved: Energy Engineer	Approved: Safety Manager	Approved: Service Chief	Drawing Title <b>DOMESTIC WASTE AND VENT PLAN - BASEMENT</b>	Project Title <b>RELOCATE AND EXPAND RENAL DIALYSIS</b>			Date 2016.01.22	
			Approved: Chief of Police	Approved: Infection Control Officer	Approved: Chief of Staff		Building Number 2	Checked BT	Drawn JLL	Project No. 658-315	
			Approved: Chief of Mental Health Service	Approved: GEMS Coordinator	Approved: Associate Director		Location SALEM VA MEDICAL CENTER			Drawing No. <b>PL102</b>	
										Sheet 90 of 144	