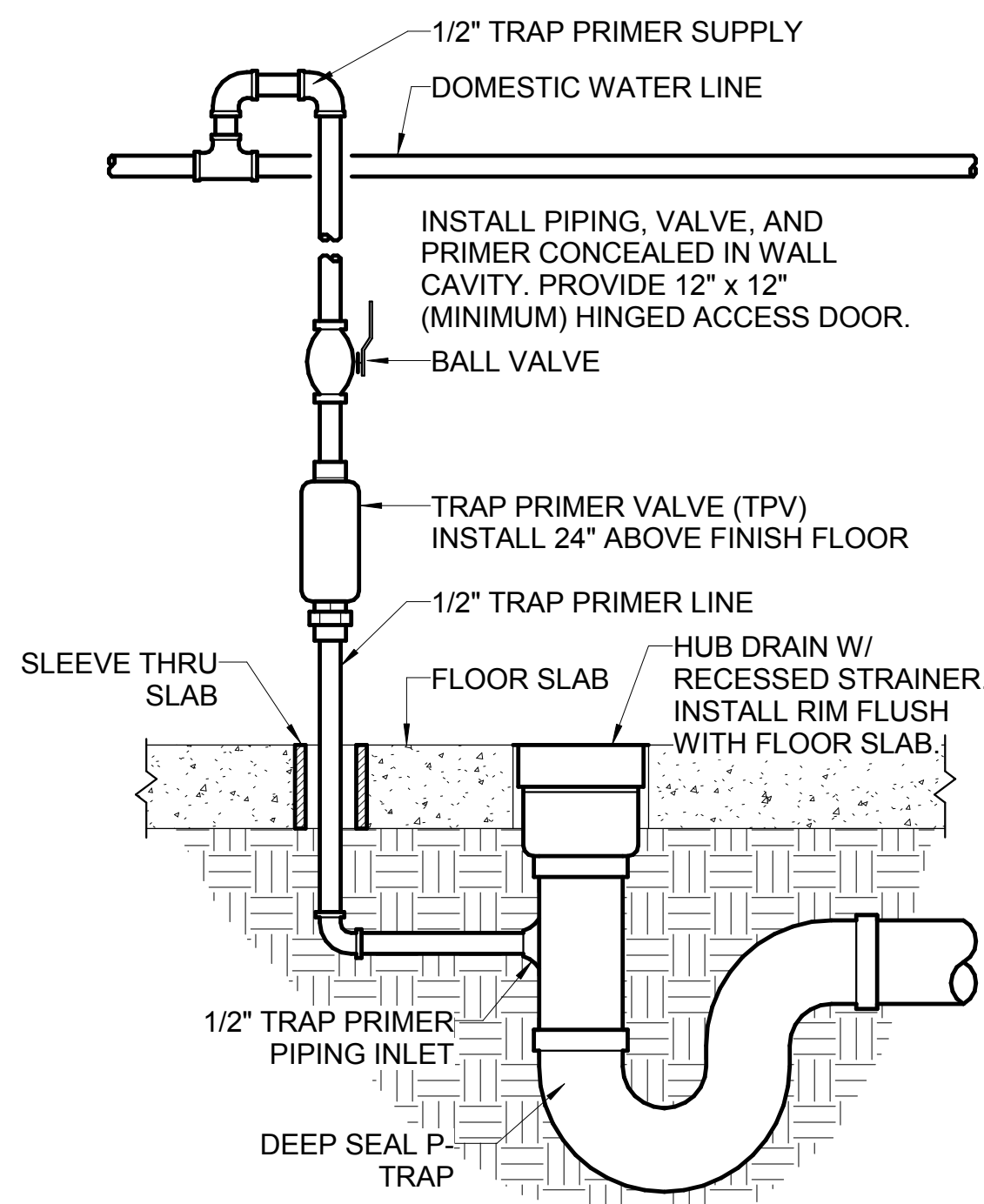
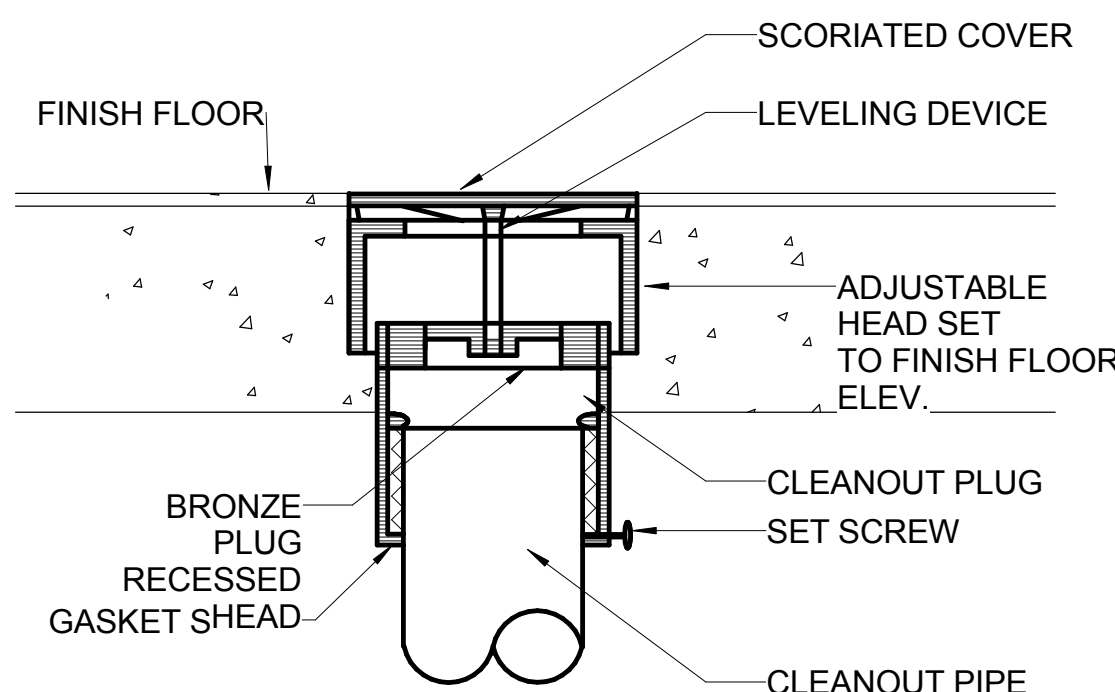


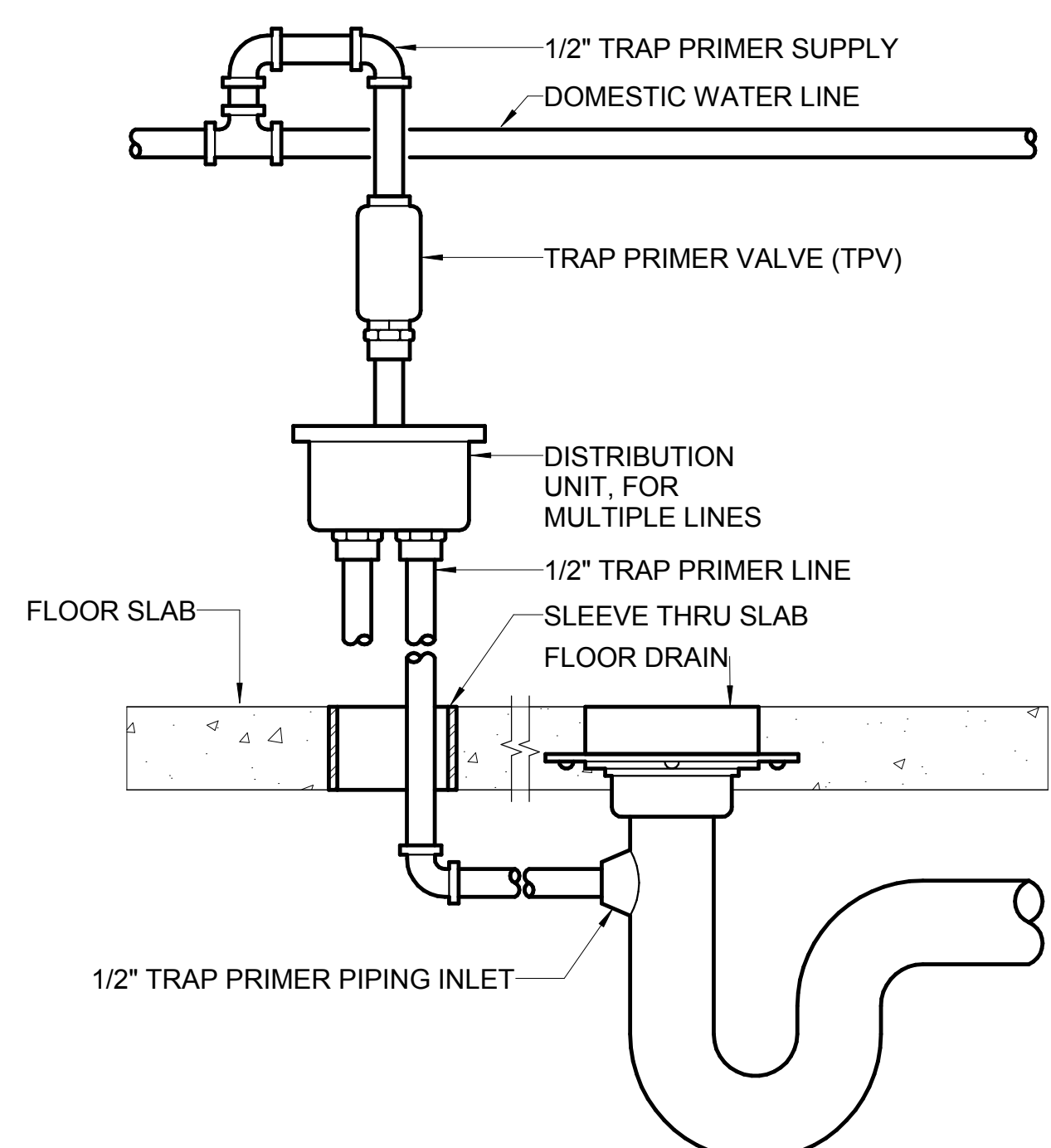
A  
three inches = one foot  
1  
0  
B  
one and one half inches = one foot  
6  
0  
C  
one inch = one foot  
6  
0  
D  
three quarters inch = one foot  
3  
0  
E  
one half inch = one foot  
6  
0  
F  
three eighths inch = one foot  
3  
0  
G  
one quarter inch = one foot  
1  
5  
H  
one eighth inch = one foot  
1  
5  
I  
5/17/2016 11:12:30 AM



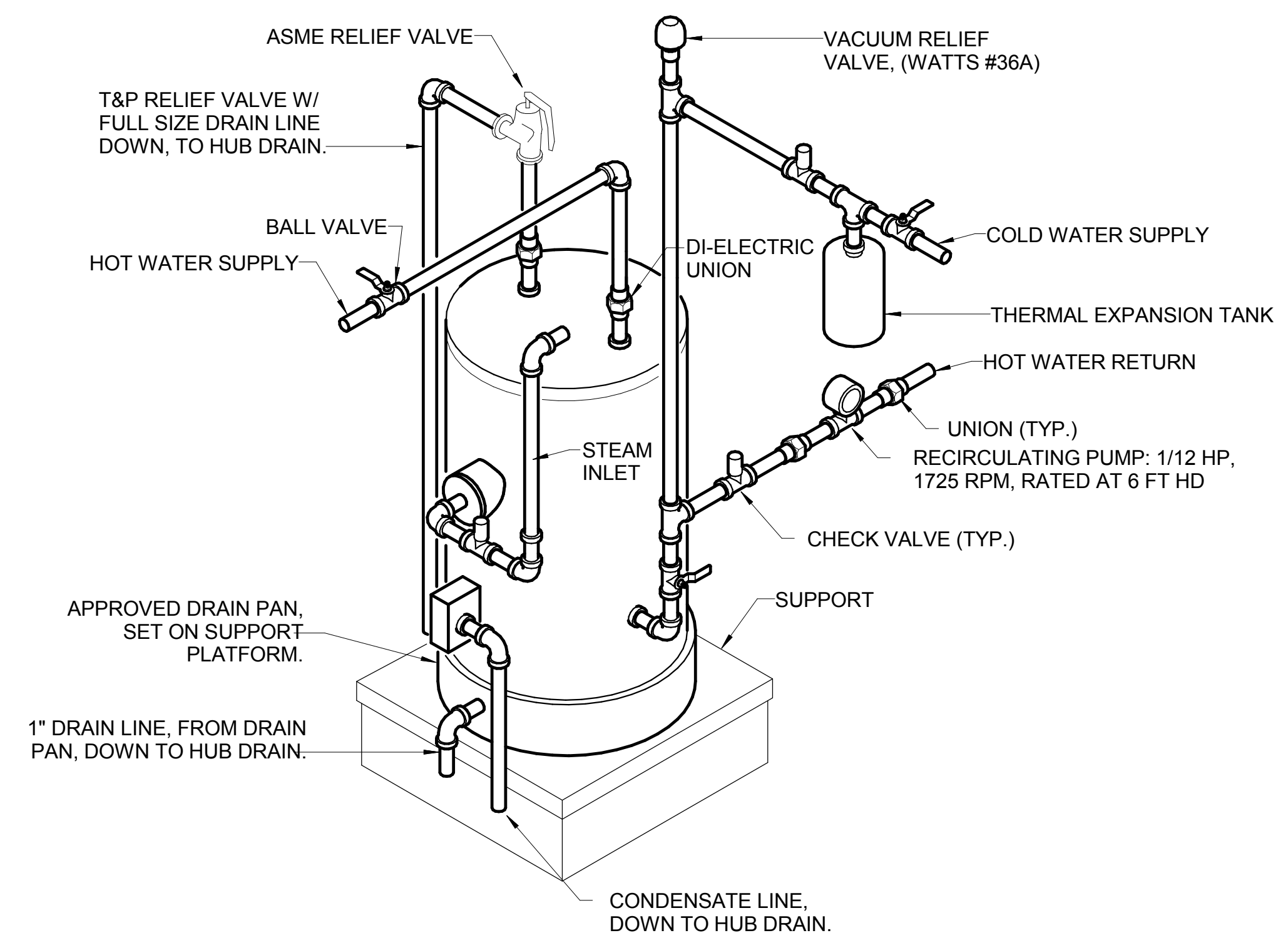
9C TYPICAL HUB DRAIN/TRAP PRIMER VALVE DETAIL  
NOT TO SCALE



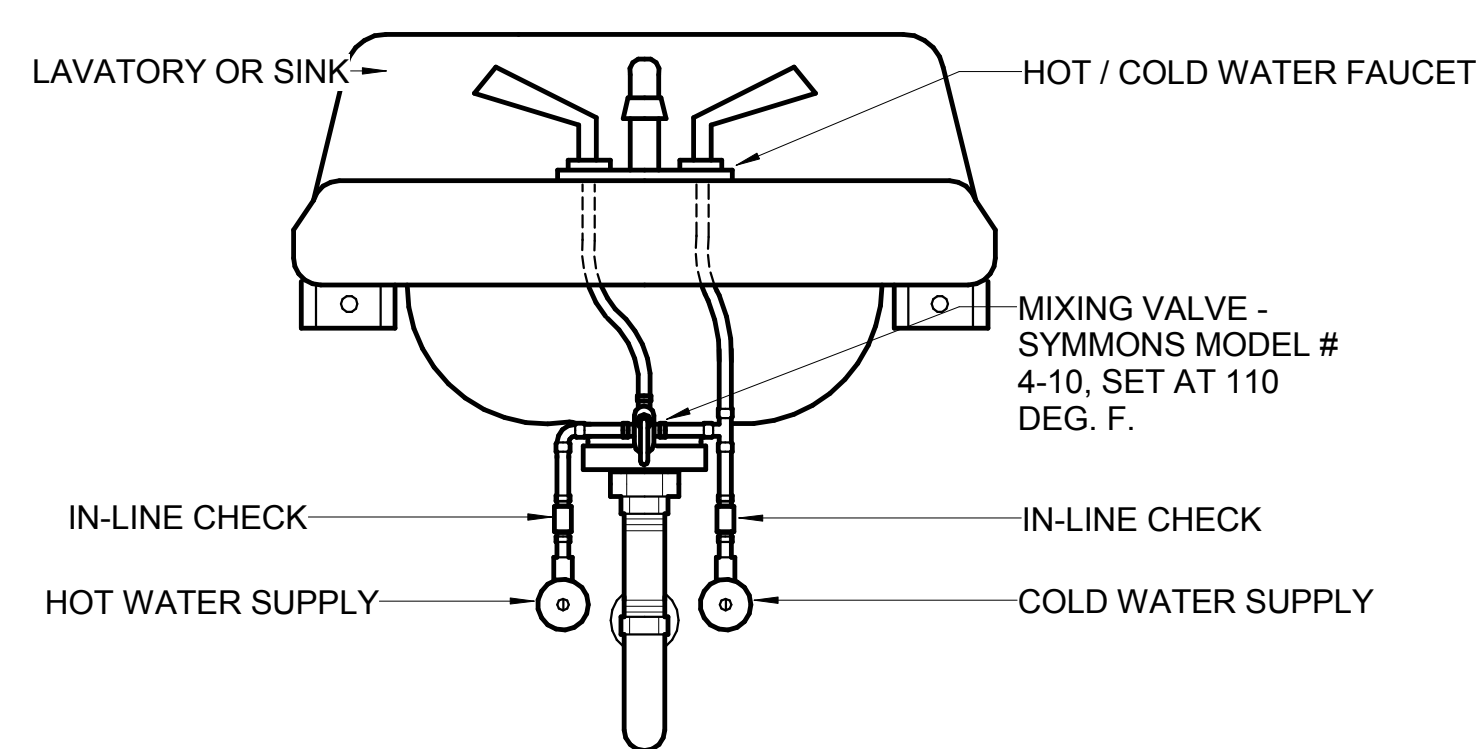
7C FINISH FLOOR CLEANOUT DETAIL  
NOT TO SCALE



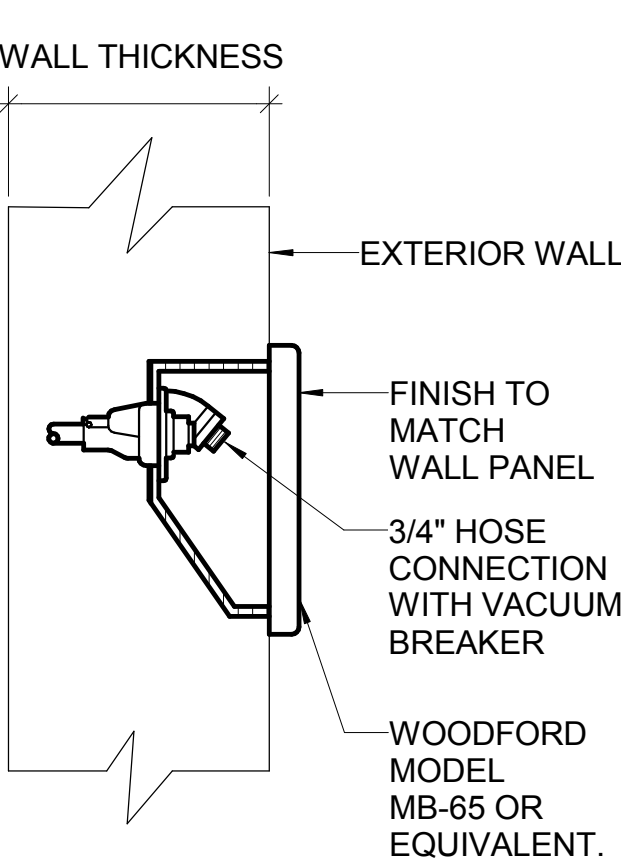
5C TRAP PRIMER VALVE DETAIL  
NOT TO SCALE



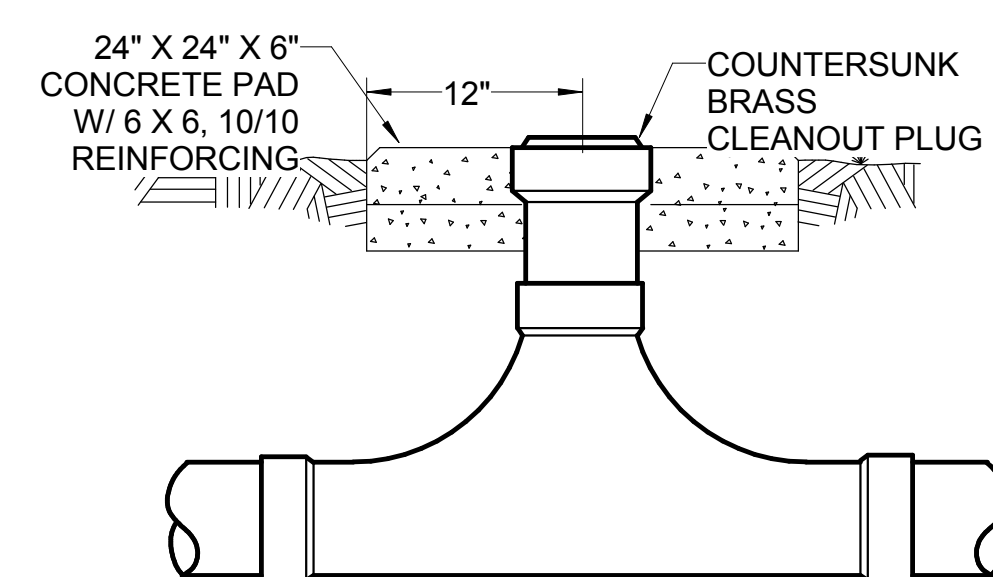
3C STEAM WATER HEATER DETAIL  
NOT TO SCALE



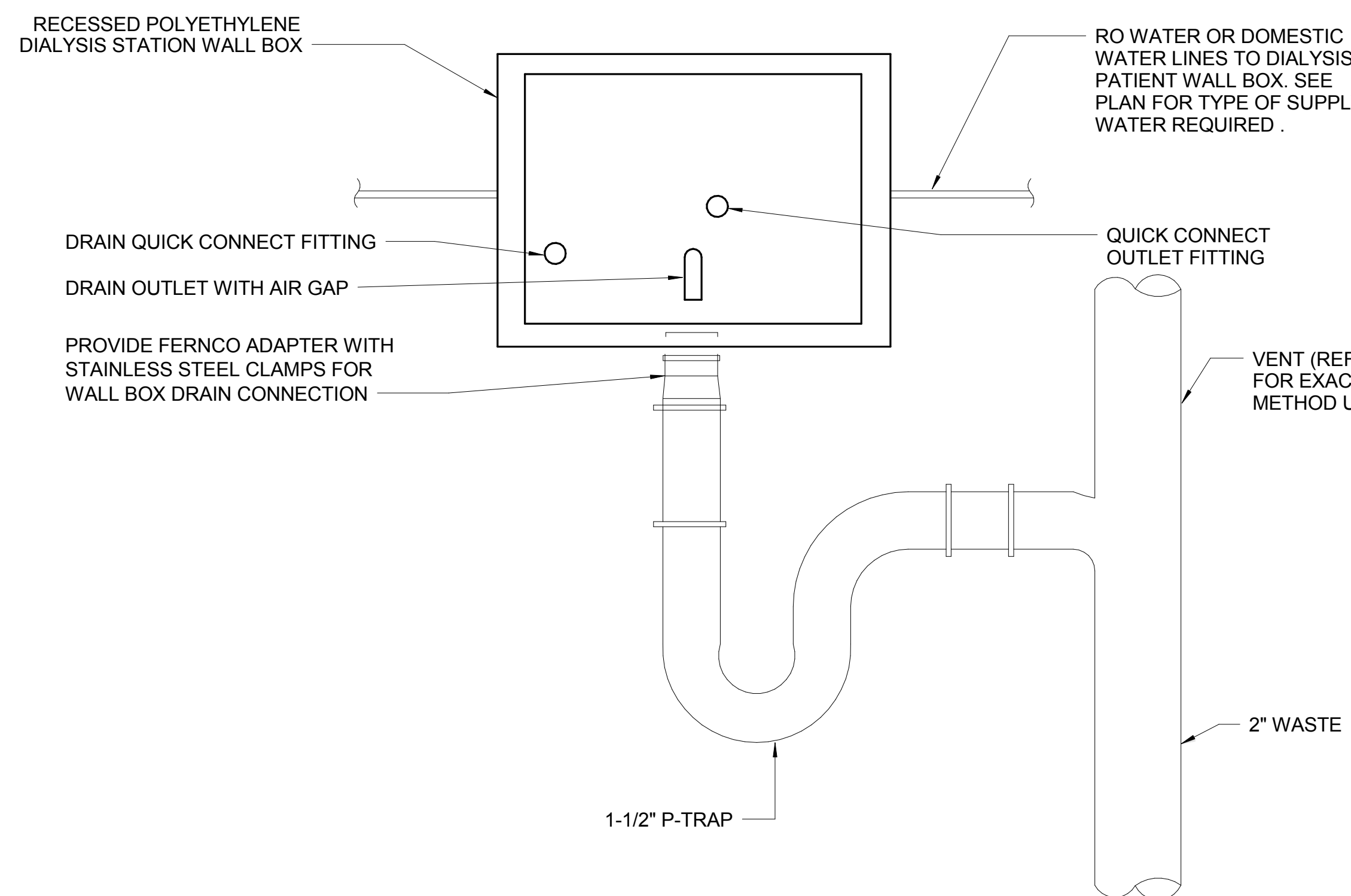
9D FIXTURE MIXING VALVE DETAIL  
NOT TO SCALE



7D NON-FREEZE WALL HYDRANT DETAIL  
NOT TO SCALE

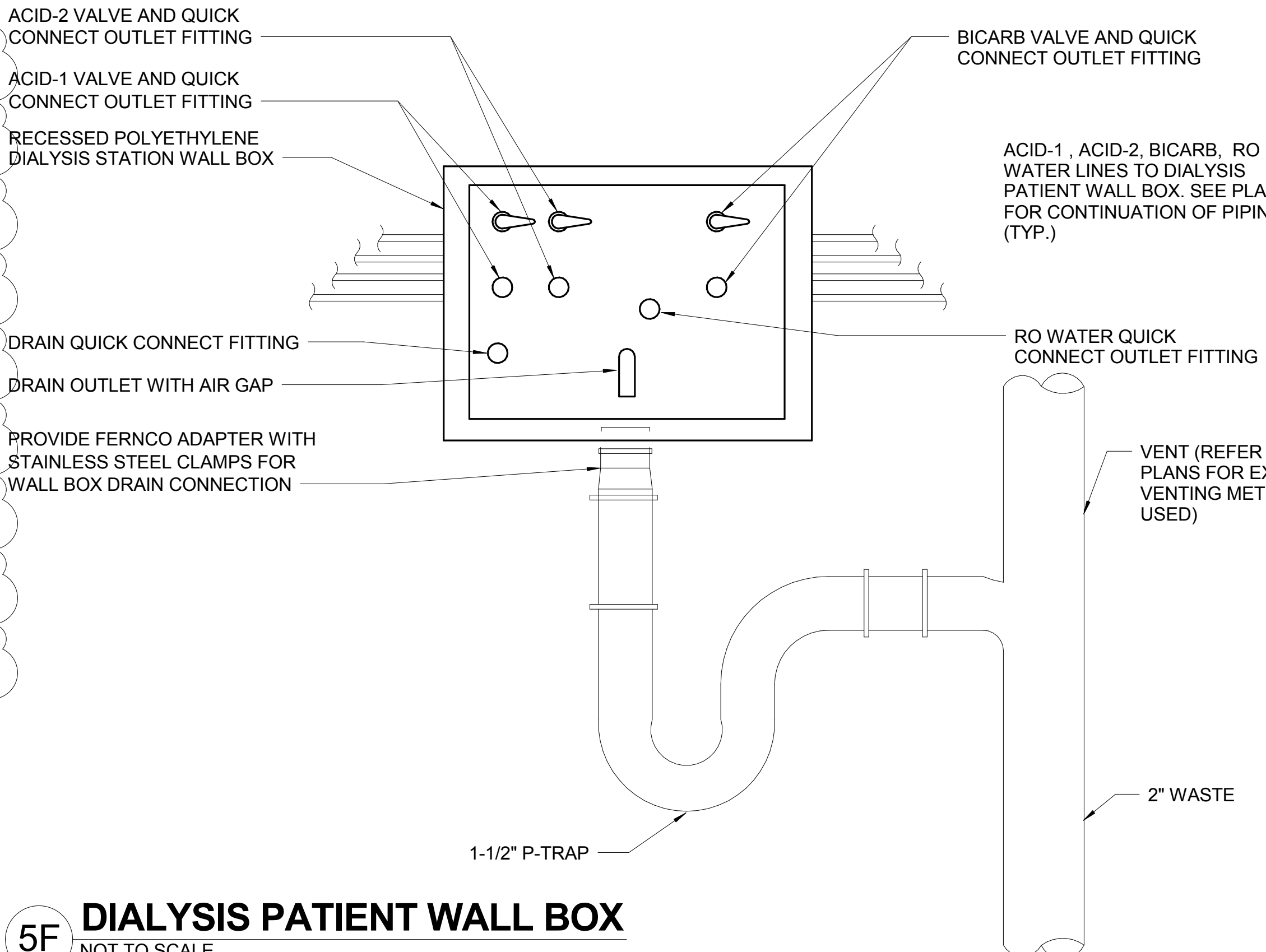


5D TWO-WAY EXTERIOR CLEANOUT DETAIL  
NOT TO SCALE



9F DIALYSIS WALL BOX - RO WATER ONLY  
NOT TO SCALE

- NOTES:
1. REFER TO ARCHITECTURAL HEAD WALL ELEVATION DETAILS FOR MOUNTING HEIGHTS AND EXACT LOCATIONS.
  2. ALL LABELING AND COLOR CODING SHALL MEET AAMI AND CMS STANDARDS.
  3. PROVIDE WALL BOX WITH RO WATER OR DOMESTIC WATER, REFER TO FLOOR PLANS.
  4. BASIS OF DESIGN: MAR-COR DW STATION WALL BOX.
  5. COORDINATE SELECTION OF QUICK CONNECTION TYPE WITH CONTRACTING OFFICER TO MATCH VA HOSPITAL DIALYSIS EQUIPMENT.
  6. DIALYSIS WALL BOXES SHALL HAVE PVC DRAIN AND VENT PIPING. REFER TO SPECIFICATION SECTION 22 13 00 FACILITY SANITARY AND VENT PIPING.
  7. PROVIDE WALL BOX WITH ZERO-DEAD LEG CONFIGURATION FOR COMPATIBILITY WITH FUTURE HEAT DISINFECTION LOOP SYSTEM.
  8. DIALYSIS WALL BOXES SHALL BE PROVIDED BY AND INSTALLED BY THE RO WATER TREATMENT CONTRACTOR.
  9. PLUMBER IS RESPONSIBLE FOR WASTE AND VENT PIPING CONNECTIONS TO ALL DIALYSIS WALL BOXES.
  10. THE RO WATER AND DIALYSIS UNIT CONNECTIONS TO THE WALL BOX SHALL BE RECESSED WITHIN THE WALL BOX. NO CONNECTIONS SHALL PROTRUDE BEYOND THE WALL SURFACE.
  11. DETAILS ARE FOR REFERENCE ONLY. COORDINATE EXACT CONNECTIONS WITH GOVERNMENT RO WATER TREATMENT SYSTEM INSTALLER THROUGH COR.



5F DIALYSIS PATIENT WALL BOX  
NOT TO SCALE

- NOTES:
1. REFER TO ARCHITECTURAL HEAD WALL ELEVATION DETAILS FOR MOUNTING HEIGHTS AND EXACT LOCATIONS.
  2. ALL LABELING AND COLOR CODING SHALL MEET AAMI AND CMS STANDARDS.
  3. WALL BOX WITH BICARBONATE, ACID-1, ACID-2, RO WATER AND DRAIN CONNECTIONS. UNLESS NOTED OTHERWISE ON PLAN.
  4. BASIS OF DESIGN: MAR-COR DW STATION WALL BOX.
  5. DIALYSIS WALL BOXES SHALL HAVE PVC DRAIN AND VENT PIPING. REFER TO SPECIFICATION SECTION 22 13 00 FACILITY SANITARY AND VENT PIPING.
  6. PROVIDE WALL BOX WITH ZERO-DEAD LEG CONFIGURATION FOR COMPATIBILITY WITH FUTURE HEAT DISINFECTION LOOP SYSTEM.
  7. DIALYSIS WALL BOXES SHALL BE PROVIDED BY GOVERNMENT AND INSTALLED BY CONTRACTOR.
  8. PLUMBER IS RESPONSIBLE FOR WASTE AND VENT PIPING CONNECTIONS TO ALL DIALYSIS AND RO WATER WALL BOXES.
  9. THE RO WATER AND DIALYSIS UNIT CONNECTIONS TO THE WALL BOX SHALL BE RECESSED WITHIN THE WALL BOX. NO CONNECTIONS SHALL PROTRUDE BEYOND THE WALL SURFACE. CONTRACTOR TO MOUNT RECESSED WALL BOXES.
  10. ALL RECESSED DIALYSIS UNIT WALL BOXES WILL BE GOVERNMENT FURNISHED EQUIPMENT. CONTRACTOR IS RESPONSIBLE FOR MOUNTING WALL BOXES AND PROVIDING SANITARY DRAIN AND VENT CONNECTIONS. THE GOVERNMENT'S RO WATER TREATMENT CONTRACTOR WILL INSTALL ALL AND CONNECT ALL RO, BICARB, AND ACID LINES.
  11. DETAILS ARE FOR REFERENCE ONLY. COORDINATE EXACT CONNECTIONS WITH GOVERNMENT RO WATER TREATMENT SYSTEM INSTALLER THROUGH COR.

CONSTRUCTION DOCUMENT  
FULLY SPRINKLERED

<div>4</div> <div>ADDENDUM #4</div> <div>5/16/16</div> <div>Revisions:</div> <div>Date</div>	<div><div>BES</div><div>DESIGN/BUILD</div><div>Corporate Office: 766 Middle St. Fairhope, AL 36532 Phone: 251.990.5778 Fax: 251.990.3716</div></div>	Approved: Patient Safety Nurse		Approved: Energy Engineer		Approved: Safety Manager		Approved: Service Chief		Drawing Title <b>PLUMBING DETAILS</b>		Project Title <b>RELOCATE AND EXPAND RENAL DIALYSIS</b>		Date 2016.01.22		Veterans Affairs		
				Approved: Chief of Police		Approved: Infection Control Officer		Approved: Chief of Staff		Approved: Chief of Facility Management Svc.		Building Number 2		Checked BT			Drawn JLL	
				Approved: Chief of Mental Health Service		Approved: GEMS Coordinator		Approved: Associate Director		Approved: Medical Center Director		Location SALEM VA MEDICAL CENTER		Drawing No. <b>PP501</b>			Sheet 97 of 144	