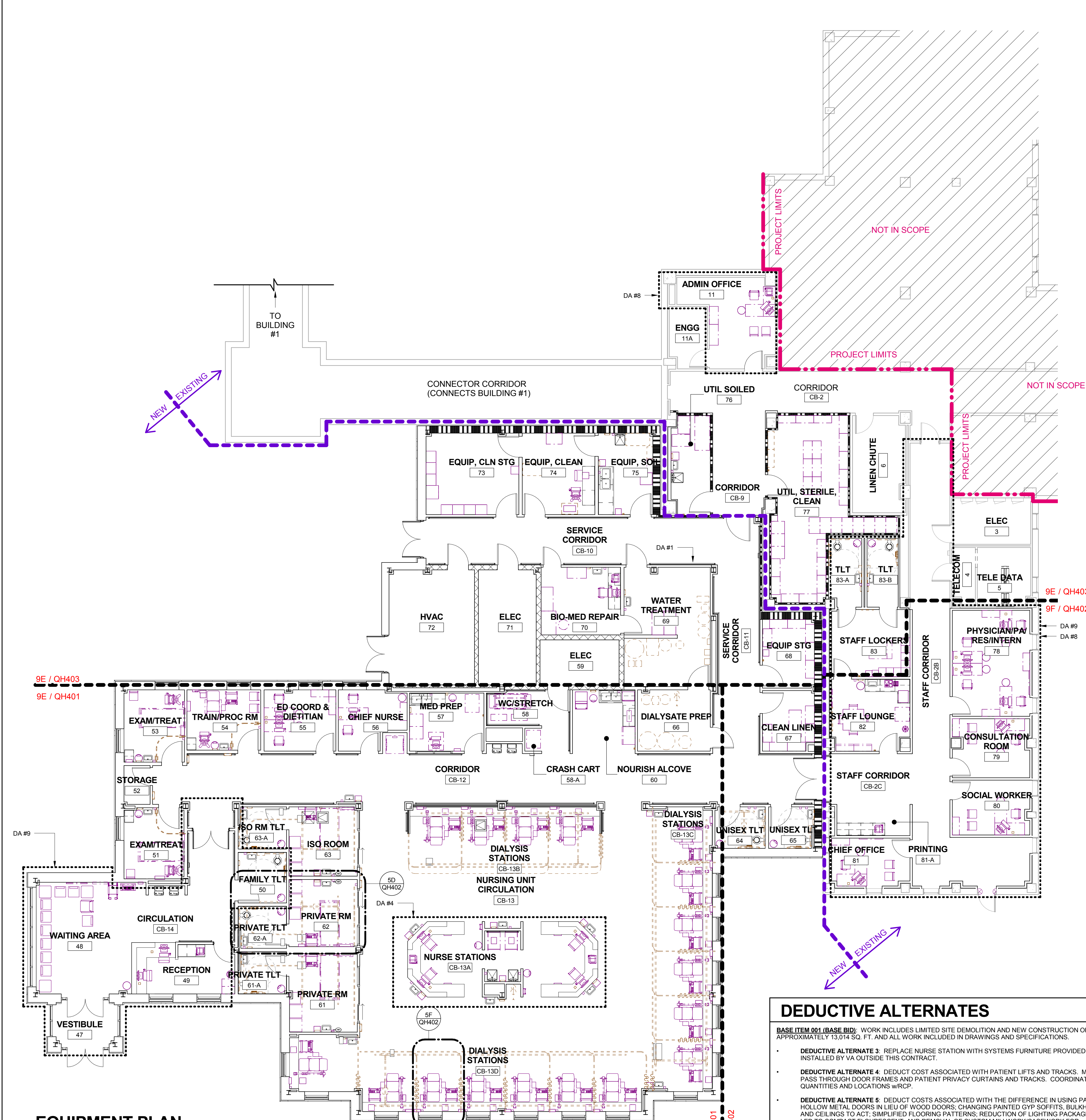


three inches = one foot  
one and one half inches = one foot  
one inch = one foot  
three quarters inch = one foot  
one half inch = one foot  
one quarter inch = one foot  
one eighth inch = one foot  
5/16/2016 12:12:48 PM



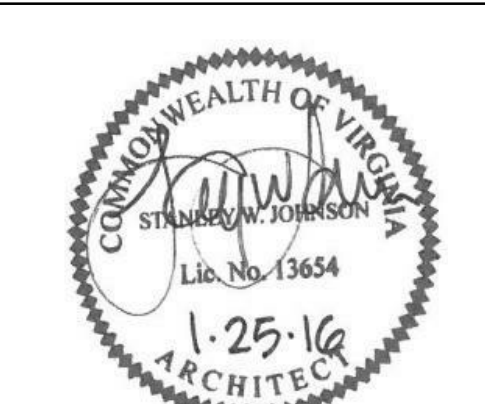
### EQUIPMENT PLAN - OVERALL BASEMENT

9F  
1/8" = 1'-0"

Revisions:	Date
4 ADDENDUM #4	05/16/2016



Corporate Office:  
766 Middle St.  
Fairhope, AL 36532  
Phone: 251.990.5778  
Fax: 251.990.3716



Approved: Patient Safety Nurse  
Approved: Energy Engineer  
Approved: Safety Manager  
Approved: Chief of Police  
Approved: Infection Control Officer  
Approved: Chief of Mental Health Service  
Approved: GEMS Coordinator

Approved: Service Chief  
Approved: Chief of Staff  
Approved: Associate Director

Approved: Chief of Facility Management Svc.  
Approved: Medical Center Director

Approved: Construction Documents Fully Sprinklered

Project Title: RELOCATE AND EXPAND RENAL DIALYSIS  
Date: 2016.01.22  
Project No: 658-315  
Building Number: 2  
Checked: JDM  
Drawn: JDM  
Location: SALEM VA MEDICAL CENTER  
Drawing No: QH101  
Sheet 82 of 144

Veterans Affairs

### MASTER EQUIPMENT SCHEDULE

MARK	JSN Name	JSN ACQ/INS ASSIGNMENT
<b>A-ARCHITECTURAL</b>		
A1010	TELECOMMUNICATION OUTLET	CC
A1012	TELEPHONE, WALL MOUNTED, 1 LINE	CC
A1016	TELEPHONE, DESK, WITH SPEAKER	CC
A1017	TELEPHONE, WALL MOUNTED; MULTIPLE LINE	VV
A1036	LOCKER, SINGLE TIER, HALF HEIGHT; BASIS OF DESIGN: TENNSCO STS-121236-A	VV
A1040	LOCKER, 2 PERSON, SIDE BY SIDE, 72x15x18	VV
A1200	LIFT SYSTEM, OVERHEAD, PATIENT ROOM, REF DA #4	CC
A1201	LIFT SYSTEM, OVERHEAD, PATIENT ROOM, TOILET ROOM, BARIATRIC, REF DA #4.	CC
A1205	LIFT SYSTEM, OVERHEAD, PATIENT ROOM w/BATH, REF DA #4.	CC
A1206	LIFT SYSTEM, OVERHEAD, PATIENT ROOM w/BATH, BARIATRIC, REF DA #4.	CC
A5020	BENCH; LOCKER ROOM; FLOOR MOUNTED	VV
A5085	DISPENSER, PAPER CUP, SS, SURFACE MOUNTED	CC
A5106	WASTE DISPOSAL UNIT, SHARPS W/ GLOVE DISPENSER	VV
A5180	TRACK, CUBICLE, SURFACE MOUNTED, WITH CURTAIN	CC
A5182	TRACK, CUBICLE, SUSPENDED, WITH CURTAIN	CC
A5210	BRACKET, TELEVISION, WALL MOUNTED, W/ADJUST ARM	CC
A5215	BRACKET, TELEVISION, CEILING MOUNTED	CC
<b>C-FIXED CASEWORK</b>		
CD040	CABINET, W/H, 2 SHELF, 2 DO, SLOPING TOP, 38X36X13	CC
CE030	CABINET, W/H; 2 SH; 2 GDO; SLOPING TOP; 38X30X13	CC
CE050	CABINET, W/H; 2 SH; 2 GDO; SLOPING TOP; 38X48X13	CC
<b>E-MODULAR CASEWORK</b>		
E0210	DESK, DOUBLE PEDESTAL	VV
E0903	LOCKER, SUPPLY, W/ SHELVES WALL MTD 23"W X 20"D	VV
E0906	LOCKER, SUPPLY, GENERAL WALL MTD 23"W X 20"D	VV
E0912	LOCKER, SUPPLY, MED SURG, WALL MTD, 23"Wx20"Dx78"H	VV
E0921	TRANSPORTER, LOCKER, SUPPLY, 27"Wx25"D	VV
E0945	CART, COMPUTER, MOBILE, 36"Hx32"Wx22"D	VV
E0954	CART, EMERGENCY, MOBILE, 68"Hx52"Wx22"D	VV
E0963	CART, GENERAL STORAGE, MOBILE	VV
<b>F-FURNITURE AND FURNISHINGS</b>		
F0110	BOOKCASE, 3 SHELF	VV
F0115	BOOKCASE, OPEN, 5 SHELF	VV
F0120	BOOKCASE, EXECUTIVE, 3 SHELF, WOOD	VV
F0205	CHAIR, SIDE, WITH ARMS	VV
F0210	CHAIR, SIDE, WITHOUT ARMS	VV
F0225	CHAIR, DINING ROOM	VV
F0230	CHAIR, DRAFTING; ROTARY	VV
F0280	CHAIR, SWIVEL, LOW BACK	VV
F0305	CHAIR, WAITING ROOM, SINGLE	VV
F0305.1	BARIATRIC CHAIR, WAITING ROOM, SINGLE	VV
F0340	STOOL, SELF ADJUSTING	VV
F0410	CABINET, FILING; HALF HEIGHT; 2 DRAWER	VV
F0420	CABINET, FILING; LATERAL; HALF HEIGHT	VV
F0510	CART, SUPPLY, LINEN	VV
F0515	CART, SUPPLY, LINEN	VV
F0535	CART, UTILITY	VV
F0740	TABLE, OCCASIONAL, LAMP	VV
F0795	TABLE, DINING	VV
F2000	BASKET, WASTEPAPER, ROUND, METAL	VV
F2010	BASKET, WASTEPAPER, STEP-ON	VV
F2017	WASTE RECEPTACLE, 24 GALLON	VV
F2020	CAN, TRASH, 44 GALLON	VV
F2300	RACK; MAGAZINE; WALL MOUNTED	VV
F3010	BOARD, BULLETIN, 48"W X 48"H	VV
F3025	BOARD, BULLETIN, WOOD FRAMED	VV
F3050	WHITEBOARD, DRY ERASE	CC
F3200	CLOCK, ATOMIC, BATTERY OPERATED	VV

MARK	JSN Name	JSN ACQ/INS ASSIGNMENT
<b>K-KITCHEN EQUIPMENT</b>		
K1552	BREWER, COFFEE, AUTO, ELECT, 3 BURNER, FRONT/BACK	VV
K4660	OVEN, MICROWAVE, HEAVY DUTY, 1000 WATT	VV
K4665	OVEN; CONSUMER	VV
K8250	TOASTER, POP-UP, 4 SLICE, ELECTRIC	VV
<b>M-MISCELLANEOUS</b>		
M0500	TELEVISION, FLAT SCREEN	VV
M0507	ARTICULATING AV MOUNT	VV
M0510	TV/DVD COMBINATION	VV
M1620	HOLDER, CHART, PATIENT, WALL OR DOOR MOUNTED	CC
M1715	HEMODIALYSIS UNIT	VV
M1801	COMPUTER, MICROPROCESSING, W/FLAT PANEL MONITOR	VV
M1802	WORK STATION, COMPUTER, RETRACTABLE, WALL MOUNTED	VV
M1840	PRINTER/COPIER/FAX COMBINATION	VV
M2050	SHELVING, STORAGE, 75"H X 36"W X 14"D	VV
M2070	SHELVING, STORAGE, 77HX36WX18D	VV
M2090.1	SHELVING, STORAGE, 36HX48WX24D	VV
M2700	SEALER, GEAT, PLASTIC BAG, W/MOTOR, PORTABLE	VV
M3070	HAMPER; LINEN, MOBILE, W/LID	VV
M3072	FRAME, INFECTIOUS WASTE BAG W/ LID	VV
M3150	DISTRIBUTION SYSTEM, MEDICATION, AUTOMATIC	VV
M3155	REFRIGERATOR, UNDERCOUNTER W/MED DISTRIBUTION SYS. LK	VV
M3578	PATIENT INFORMATION AND SCHEDULING KIOSK	VV
M4020	IN-FLOOR SCALE, PERSON WEIGHING, HIGH CAPACITY	VV
M4100	SPHYGMOMANOMETER, ANEROID, WALL MOUNTED	VV
M4200	OTOSCOPE, OPHTHALMOSCOPE, WALL MOUNTED	VV
M4655	STRETCHER, MOBILE, CRS, 9 POSITION	VV
M4705	WHEELCHAIR, PATIENT TRANSPORT, FOLDING	VV
M4905	CHAIR, DIALYSIS	VV
M7010	BED, HIGH-LO, MANUAL	VV
M7250	CART, COMPUTER, MOBILE, 36"Hx32"Wx22"D	VV
M8320	TABLE, TREATMENT, HI/LO	VV
<b>P-PLUMBING</b>		
P2000	EYEWASH, WALL MOUNTED, HANDS-FREE	CC
P2450	VALVE, MIXING, THERMOSTATIC	CC
P3100	LAVATORY, VITREIUS CHINA, SLAB TYPE	CC
P6350	SINK; FLUSHING RIM, CHINA	CC
P8705	DIALYSIS BOX, RECESSED, SINGLE VALVE	VC
P9150	WATER CLOSET, LAVATORY, COMBINATION, MODULE	CC
<b>R-REFRIGERATION</b>		
R2200	FOUNTAIN, WATER	CC
R2202	FOUNTAIN, WATER, CRS, WALL MOUNTED, HANDICAP	CC
R4650	ICE MAKER, FLAKED, WITH DISPENSER	VV
R7000	REFRIGERATOR, 14 CUBIC FEET	VV
R7250	REFRIGERATOR/ FREEZER; 20 CUBIC FEET	VV
<b>S-STERILIZERS AND ASSOCIATED EQUIPMENT</b>		
S0395	LOADING CAR & TRANSFER CARRIAGE, LARGE CHAMBER	CC
S0940	WASHER/DISINFECTOR, STM, 100, RSCD1WLL, 26X24X24 CHAM	VV
S2635	CLEANER, ULTRASONIC, SNGL CHAMBER, CAB, F/S	CC
S5500	STERILIZER, HYDROGEN PEROXIDE GAS, 1.75CU. FT. CHAM	VV
S9610	STATION, UTILITY/RACK	CC
S9770	CART, LOADING, STERILIZABLE	VV
<b>T-SHOP EQUIPMENT / TOOLS</b>		
T0015	DEFIBRILLATOR ANALYZER, AUTOMATIC, PORTABLE	VV
T0120.1	WORKBENCH, WOOD TOP, 48" (1200 MM) X LENGTH AS REQUIRED X 30" (750 MM)	VV
T0175.1	CABINET, TOOL STORAGE, HEAVY DUTY, 4 SHELVES, 2 DOORS WITH LOCK, 36" X 18" X 84"	VV

### MASTER TOILET ACCESSORY SCHEDULE

MARK	DESCRIPTION	JSN ACQ/INS ASSIGNMENT
BCS-1	CHANGING STATION, WALL MOUNTED	CC
GB-36	(A5109) 36" GRAB BAR, 1-1/4 DIA., SS, WALL, W/C ACCESSIBLE	CC
GB-42	(A5109) 42" GRAB BAR, 1-1/4 DIA., SS, WALL, W/C ACCESSIBLE	CC
HK-1	(A5145) HOOK, GARMENT, DOUBLE, SS, SURFACE MOUNTED	CC
HSD-1	(A5071) DISPENSER; HAND SANITIZER; SURFACE MOUNTED; DISPOSAL	VV
MR-1	(A1068) MIRROR, FLOAT GLASS, WITH SS FRAME	VV
MR-2	MIRROR; POSTURE; WALL MOUNTED	VV
PTD-1	(A5080) DISPENSER, PAPER TOWEL, SS, SURFACE MOUNTED	CC
SD-1	(A5070) DISPENSER; SOAP; DISPOSABLE	VV
SLF-1	(A5162) SHELF; FOLD DOWN; STAINLESS STEEL	CC
SND-1	(A5090) DISPOSAL, SANITARY NAPKIN, SS, SURFACE MOUNTED	CC
TPD-1	(A5200) DISPENSER, TOILET TISSUE, SS, 2-ROLL, SURFACE MNTD	CC

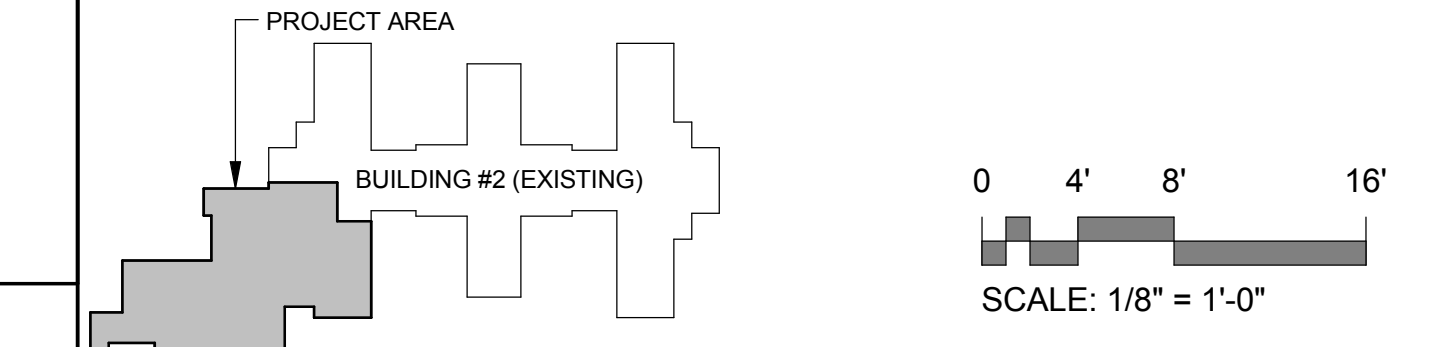
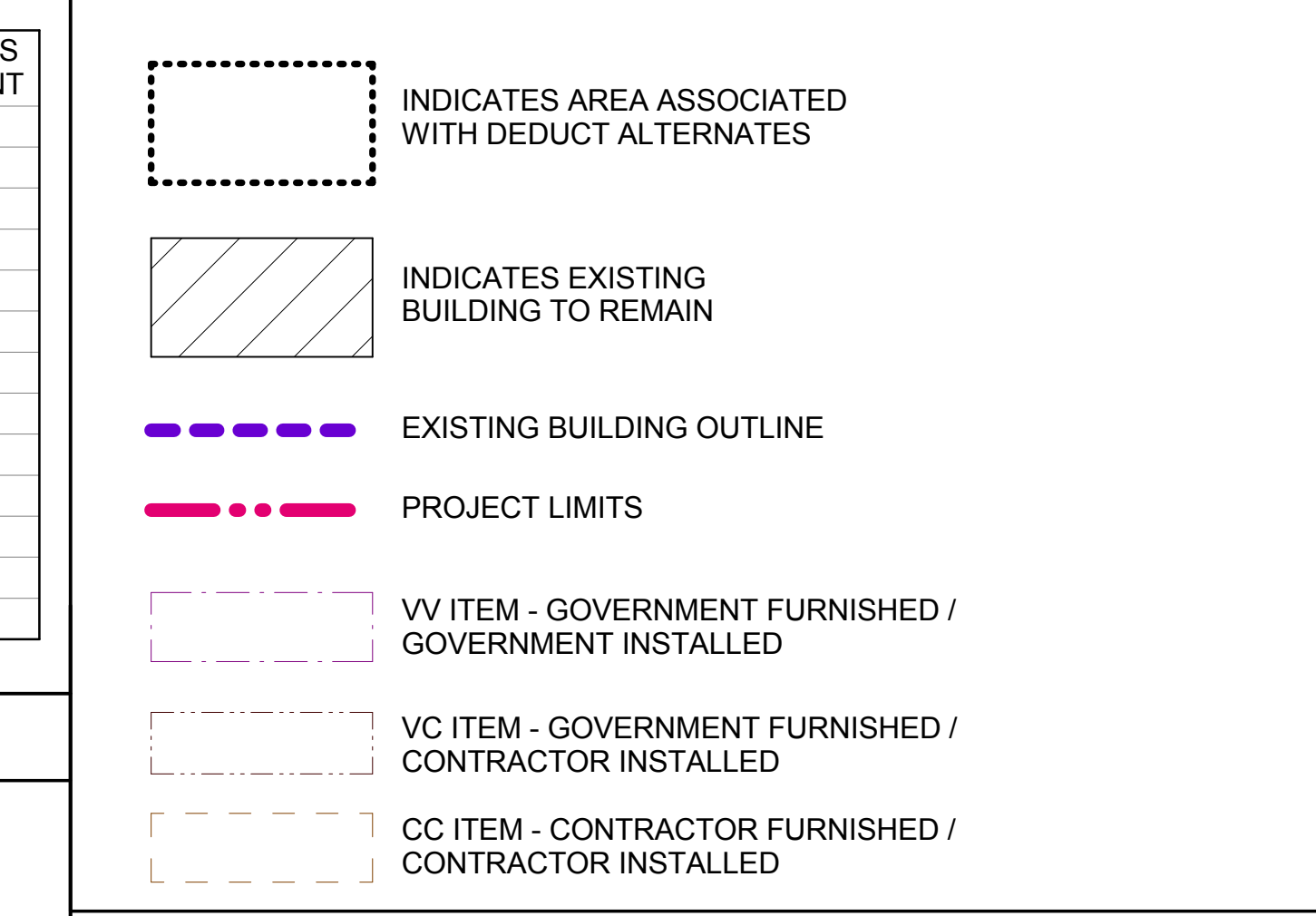
### GENERAL NOTES

- JSN (JOINT SCHEDULE NUMBERS) ARE BASED ON MIL-STD 1691 MASTER EQUIPMENT LIST.
- ALL DRAWERS AND CABINETS THAT ARE ACCESSIBLE BY PATIENTS NEED TO BE LOCKABLE.
- GRAPHICALLY REPRESENTED EQUIPMENT IS FOR REFERENCE ONLY AND MAY NOT DEPECT THE EXACT VA OR CONTRACTOR MODEL TYPE SELECTED.
- REFERENCE SHEET G1002 FOR THE 'EQUIPMENT MOUNTING LEGEND'. EQUIPMENT MOUNTING LEGEND INDICATES HEIGHTS FROM FLOOR, AND OFFSETS FROM WALLS OF EQUIPMENT, AND TOILETS ACCESSORIES TO BE INSTALLED UNO.
- REFERENCE PLUMBING SHEETS FOR EQUIPMENT IN DIALYSATE PREP 66 AND WATER TREATMENT 69

### DEDUCTIVE ALTERNATES

- BASE ITEM 001 (BASE BID):** WORK INCLUDES LIMITED SITE DEMOLITION AND NEW CONSTRUCTION OF APPROXIMATELY 13,014 SQ. FT. AND ALL WORK INCLUDED IN DRAWINGS AND SPECIFICATIONS.
- DEDUCTIVE ALTERNATE 3:** REPLACE NURSE STATION WITH SYSTEMS FURNITURE PROVIDED AND INSTALLED BY VA OUTSIDE THIS CONTRACT.
  - DEDUCTIVE ALTERNATE 4:** DEDUCT COST ASSOCIATED WITH PATIENT LIFTS AND TRACKS. MAINTAIN PASS THROUGH DOOR FRAMES AND PATIENT PRIVACY CURTAINS AND TRACKS. COORDINATE QUANTITIES AND LOCATIONS W/RCP.
  - DEDUCTIVE ALTERNATE 5:** DEDUCT COSTS ASSOCIATED WITH THE DIFFERENCE IN USING PAINTED, HOLLOW METAL DOORS IN LIEU OF WOOD DOORS; CHANGING PAINTED GYP SOFFITS, BULKHEADS, AND CEILINGS TO ACT: SIMPLIFIED FLOORING PATTERNS; REDUCTION OF LIGHTING PACKAGE FROM LED TO COMPACT FLOURESCENT; AND REMOVAL OF CUSTOM MILLWORK/CASEWORK FOR RECEPTION STATION.
  - DEDUCTIVE ALTERNATE 7:** DEDUCT ALL DEMO AND NEW CONSTRUCTION COSTS ASSOCIATED WITH THE FOLLOWING ROOMS: CB-25, CB-2C, 11, 78, 79, 80, 81, 81-A, 82, 83, 83-A, & 83-B.
  - DEDUCTIVE ALTERNATE 8:** RELOCATE WAITING AREA (48) AND RECEPTION (49) TO SHELL SPACE IN RENOVATION AREA OF BUILDING 2, AND DEDUCT ALL COSTS ASSOCIATED WITH REMOVAL OF THE FOOT PRINT OF THE ADDITION THAT INCLUDES VESTIBULE (47), WAITING AREA (48), & RECEPTION (49); REFER TO AE900 SERIES FOR COMPLETE SCOPE OF DA.

### GRAPHIC LEGEND



KEY PLAN  
BASEMENT FFE: 1091.3'

CONSTRUCTION DOCUMENTS FULLY SPRINKLERED