

A

B

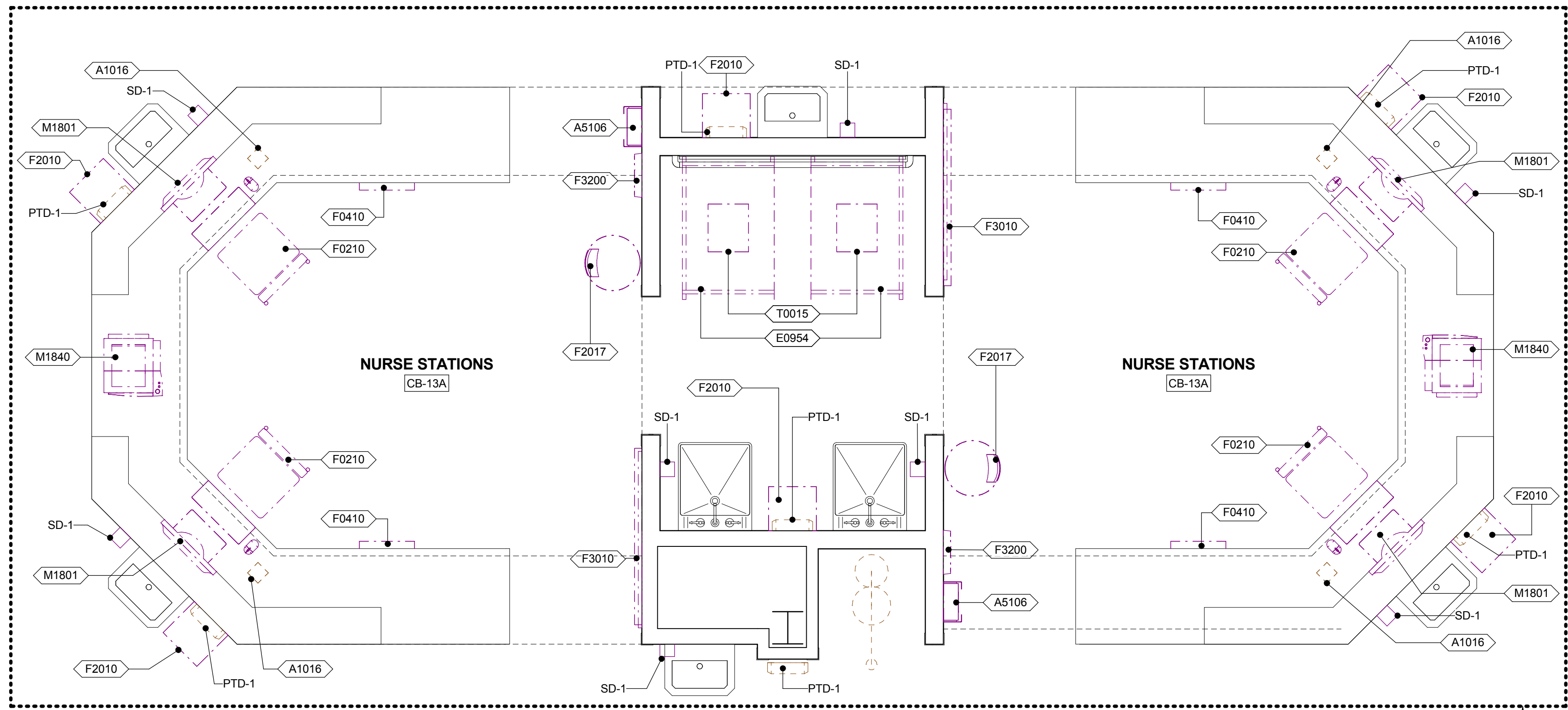
C

D

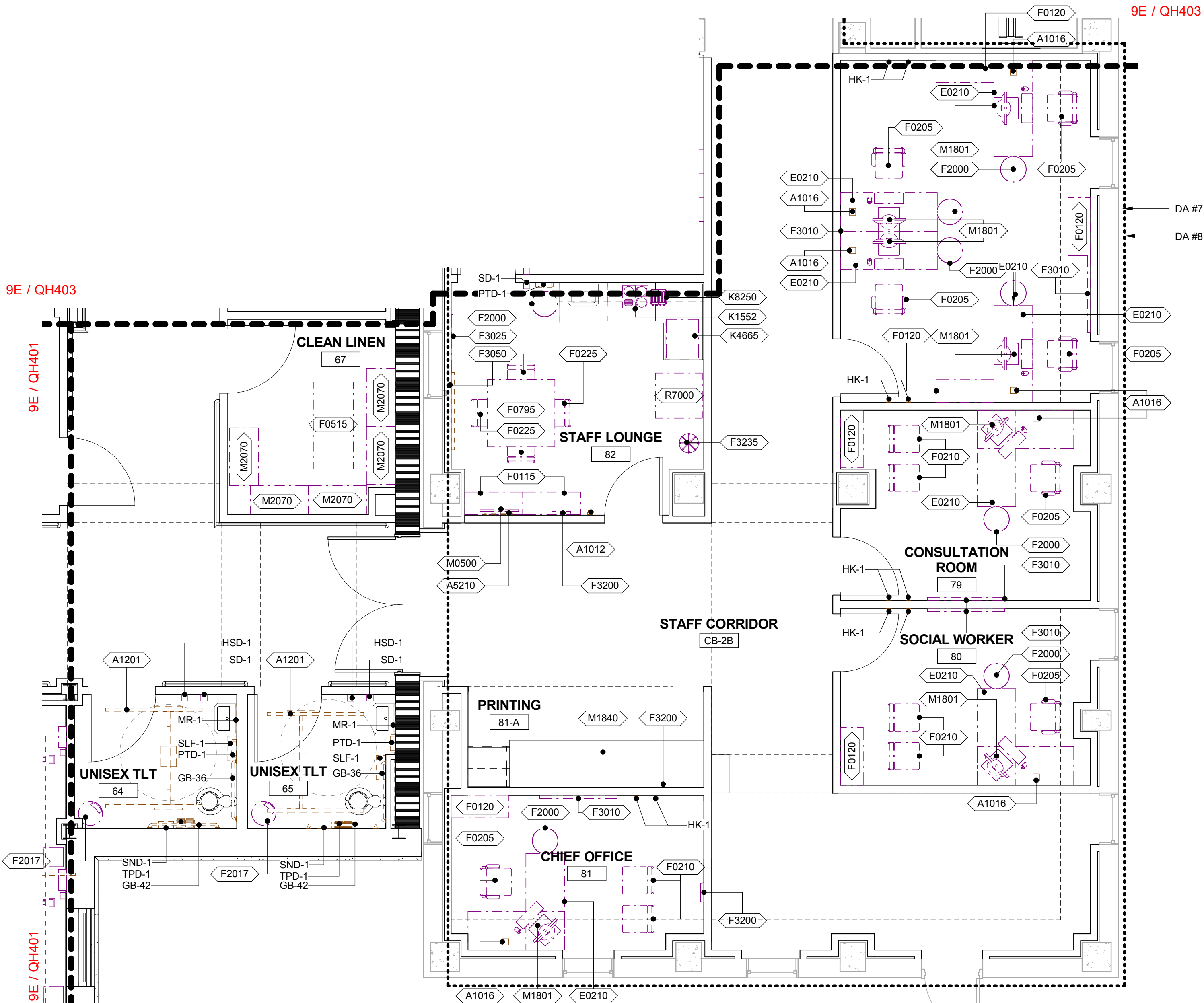
E

F

Veterans Affairs



9B EQUIPMENT PLAN - NURSE STATION
1/2" = 1'-0"



9F EQUIPMENT PLAN - BASEMENT (SOUTHEAST)
1/4" = 1'-0"

GENERAL NOTES

- JSN (JOINT SCHEDULE NUMBERS) ARE BASED ON MIL-STD 1691 MASTER EQUIPMENT LIST.
- ALL DRAWERS AND CABINETS THAT ACCESSIBLE BY PATIENTS NEED TO BE LOCKABLE.
- GRAPHICALLY REPRESENTED EQUIPMENT IS FOR REFERENCE ONLY AND MAY NOT DEPECT THE EXACT VA OR CONTRACTOR MODEL TYPE SELECTED.
- REFERENCE SHEET G1002 FOR THE 'EQUIPMENT MOUNTING LEGEND'. EQUIPMENT MOUNTING LEGEND INDICATES HEIGHTS FROM FLOOR, AND OFF-SETS FROM WALLS OF EQUIPMENT, AND TOILETS ACCESSORIES TO BE INSTALLED UNO.
- REFERENCE PLUMBING SHEETS FOR EQUIPMENT IN DIALYSATE PREP 66 AND WATER TREATMENT 69

GRAPHIC LEGEND

- INDICATES AREA ASSOCIATED WITH DEDUCT ALTERNATES
- INDICATES EXISTING BUILDING TO REMAIN
- EXISTING BUILDING OUTLINE
- PROJECT LIMITS
- VV ITEM - GOVERNMENT FURNISHED / GOVERNMENT INSTALLED
- VC ITEM - GOVERNMENT FURNISHED / CONTRACTOR INSTALLED
- CC ITEM - CONTRACTOR FURNISHED / CONTRACTOR INSTALLED

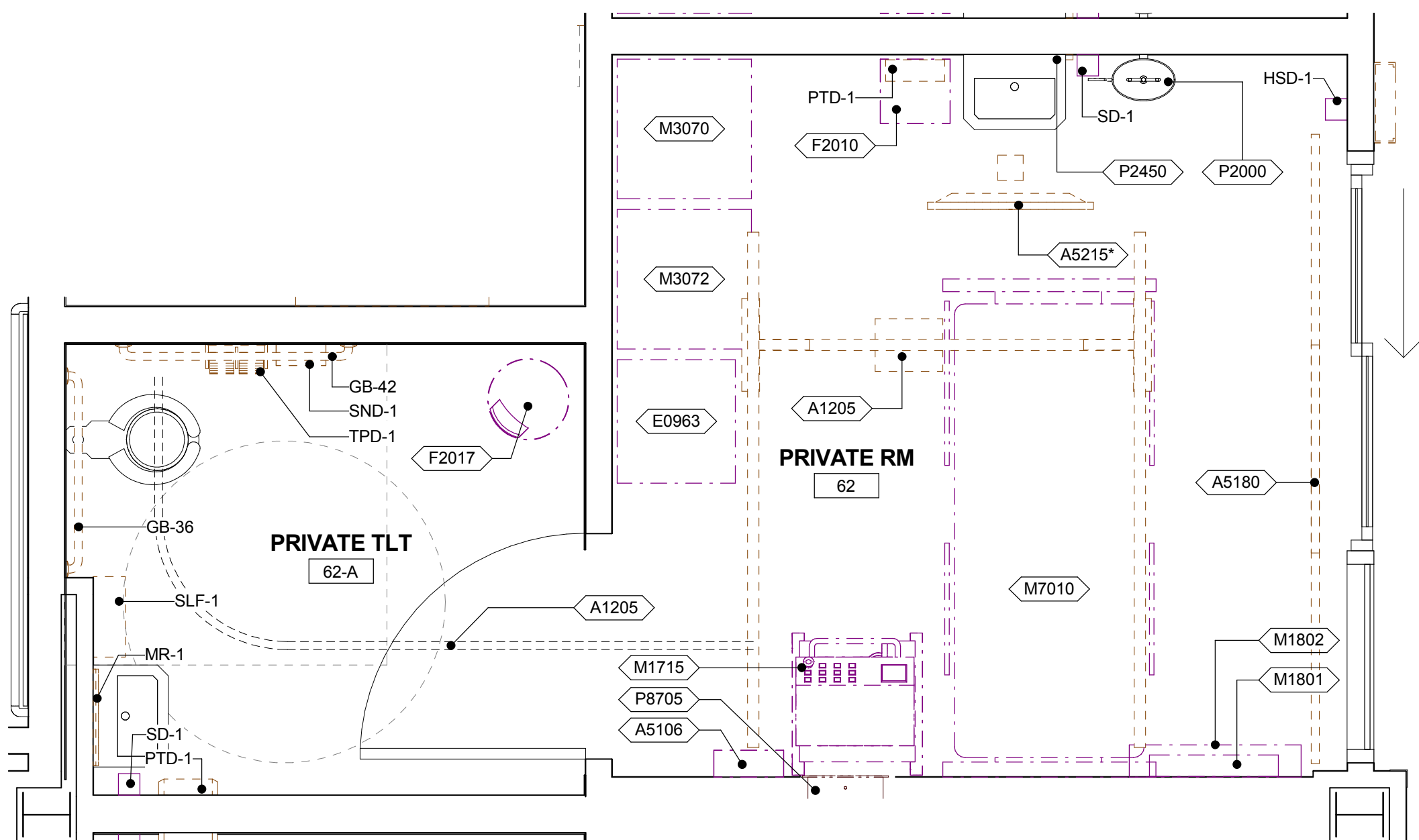
EQUIPMENT SCHEDULE

MARK	JSN Name	JSN ACO/INS ASSIGNMENT
A-ARCHITECTURAL		
A1012	TELEPHONE, WALL MOUNTED, 1 LINE	CC
A1016	TELEPHONE, DESK, WITH SPEAKER	CC
A1036	LOCKER, SINGLE TIER, HALF HEIGHT; BASIS OF DESIGN: TENNSCO STS-121236-A	VV
A1200	LIFT SYSTEM, OVERHEAD, PATIENT ROOM, REF DA #4	CC
A1201	LIFT SYSTEM, OVERHEAD, PATIENT ROOM, TOILET ROOM, BARIATRIC, REF DA #4.	CC
A1205	LIFT SYSTEM, OVERHEAD, PATIENT ROOM w/BATH, REF DA #4.	CC
A5106	WASTE DISPOSAL UNIT, SHARPS W/ GLOVE DISPENSER	VV
A5180	TRACK, CUBICLE, SURFACE MOUNTED, WITH CURTAIN	CC
A5182	TRACK, CUBICLE, SUSPENDED, WITH CURTAIN	CC
A5210	BRACKET, TELEVISION, WALL MOUNTED, W/ADJUST ARM	CC
A5215*	BRACKET, TELEVISION, CEILING MOUNTED	CC
E-MODULAR CASEWORK		
E0210	DESK, DOUBLE PEDESTAL	VV
E0954	CART, EMERGENCY, MOBILE, 66"Hx52"Wx22"D	VV
E0963	CART, GENERAL STORAGE, MOBILE	VV
F-FURNITURE AND FURNISHINGS		
F0115	BOOKCASE, OPEN, 5 SHELF	VV
F0120	BOOKCASE, EXECUTIVE, 3 SHELF, WOOD	VV
F0205	CHAIR, SIDE, WITH ARMS	VV
F0210	CHAIR, SIDE, WITHOUT ARMS	VV
F0225	CHAIR, DINING ROOM	VV
F0410	CABINET; FILING; HALF HEIGHT; 2 DRAWER	VV
F0515	CART, SUPPLY, LINEN	VV
F0795	TABLE, DINING	VV
F2000	BASKET, WASTEPAPER, ROUND, METAL	VV
F2010	BASKET, WASTEPAPER, STEP-ON	VV
F2017	WASTE RECEPTACLE, 24 GALLON	VV
F3010	BOARD, BULLETIN, 48"W x 48"H	VV
F3025	BOARD, BULLETIN, WOOD FRAMED	VV
F3050	WHITEBOARD, DRY ERASE	CC
F3200	CLOCK, ATOMIC, BATTERY OPERATED	VV
F3235	RACK, HAT/COAT, FLOOR STANDING	VV
K-KITCHEN EQUIPMENT		
K1552	BREWER, COFFEE, AUTO, ELECT, 3 BURNER, FRONT/BACK	VV
K4665	OVEN; MICROWAVE; CONSUMER	VV
K8250	TOASTER, POP-UP, 4 SLICE, ELECTRIC	VV
M-MISCELLANEOUS		
M0500	TELEVISION, FLAT SCREEN	VV
M0507*	ARTICULATING A/V MOUNT	VV
M1715	HEMODIALYSIS UNIT	VV
M1801	COMPUTER, MICROPROCESSING, W/FLAT PANEL MONITOR	VV
M1802	WORK STATION, COMPUTER, RETRACTABLE, WALL MOUNTED	VV
M1840	PRINTER/COPIER/FAX-COMBINATION	VV
M2070	SHELVING, STORAGE, 77HX36WX18D	VV
M3070	HAMPER, LINEN, MOBILE, W/ LID	VV
M3072	FRAME, INFECTIOUS WASTE BAG W/ LID	VV
M4905	CHAIR, DIALYSIS	VV
M7010	BED, HIGH-LO, MANUAL	VV
P-PLUMBING		
P2000	EYEWASH, WALL MOUNTED, HANDS-FREE	CC
P2450	VALVE; MIXING; THERMOSTATIC	CC
P8705	DIALYSIS BOX, RECESSED, SINGLE VALVE	VC
R-REFRIGERATION		
R7000	REFRIGERATOR, 14 CUBIC FEET	VV
T-SHOP EQUIPMENT / TOOLS		
T0015	DEFIBRILLATOR ANALYZER, AUTOMATIC, PORTABLE	VV

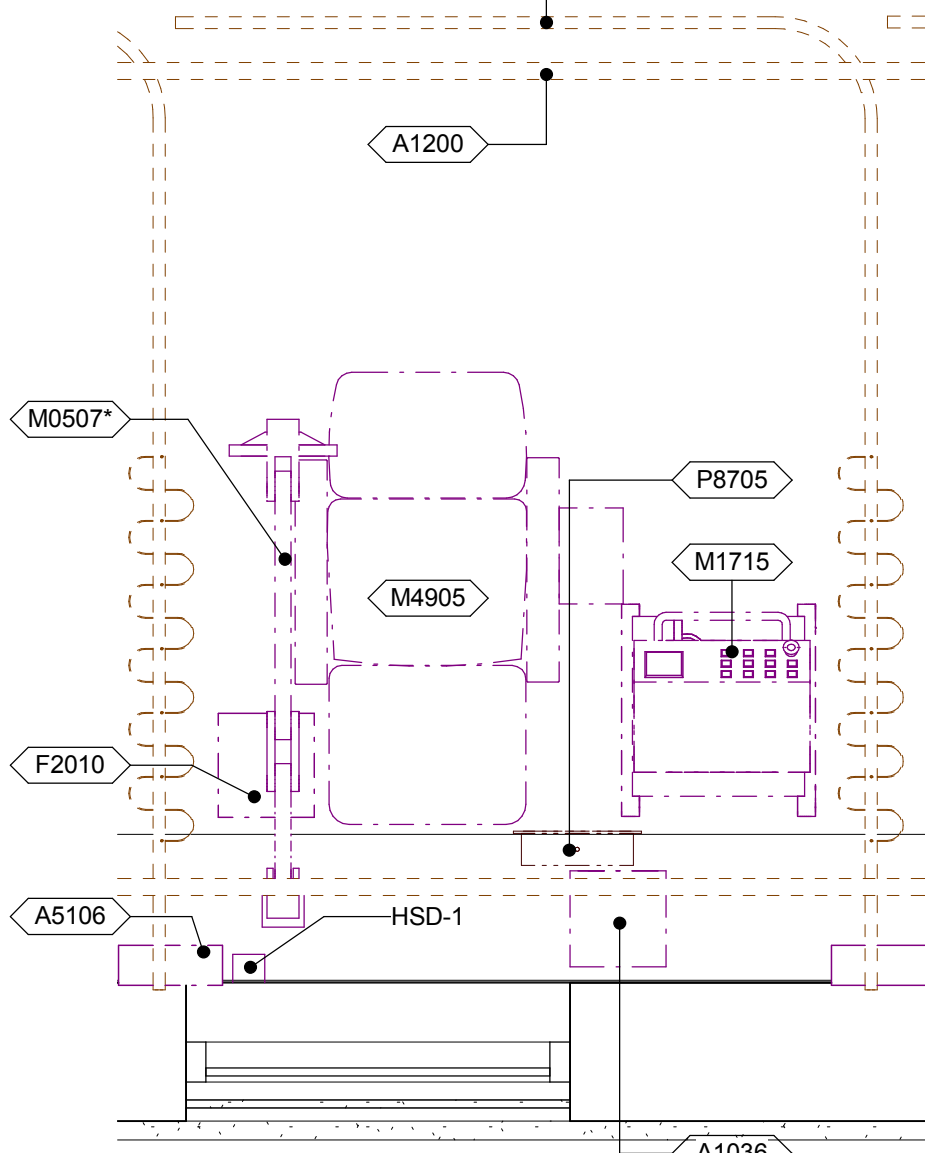
NOTE:		
* INDICATES AN M0506 (VV) TELEVISION SHALL BE SUPPLIED WITH THE SPECIFIED PIECE OF EQUIPMENT.		
NOTE:		
SOME EQUIPMENT DOES NOT APPLY TO THIS DRAWING.		

TOILET ACCESSORY SCHEDULE

MARK	NAME	JSN ACO/INS ASSIGNMENT
GB-36	(A5109) 36" GRAB BAR, 1-1/4 DIA., SS, WALL, W/C ACCESSIBLE	CC
GB-42	(A5109) 42" GRAB BAR, 1-1/4 DIA., SS, WALL, W/C ACCESSIBLE	CC
HK-1	(A5145) HOOK, GARMENT, DOUBLE, SS, SURFACE MOUNTED	CC
HSD-1	(A5071) DISPENSER; HAND SANITIZER; SURFACE MOUNTED; DISPOSAL	VV
MR-1	(A1066) MIRROR, FLOAT GLASS, WITH SS FRAME	CC
PTD-1	(A5080) DISPENSER, PAPER TOWEL, SS, SURFACE MOUNTED	CC
SD-1	(A5070) DISPENSER; SOAP; DISPOSABLE	VV
SLF-1	(A5162) SHELF; FOLD DOWN; STAINLESS STEEL	CC
SND-1	(A5090) DISPOSAL, SANITARY NAPKIN, SS, SURFACE MOUNTED	CC
TPD-1	(A5200) DISPENSER, TOILET TISSUE, SS, 2-ROLL, SURFACE MNTD	CC



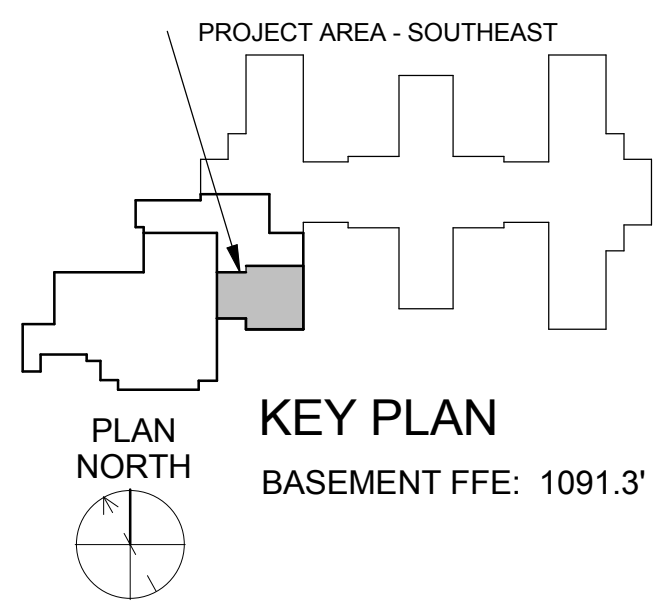
5D EQUIPMENT PLAN - ENLARGED PRIVATE/ISO RM
1/2" = 1'-0"



5F EQUIPMENT PLAN - ENLARGED TYPICAL DIALYSIS STATION
1/2" = 1'-0"

DEDUCTIVE ALTERNATES

- BASE ITEM 001 (BASE BID):** WORK INCLUDES LIMITED SITE DEMOLITION AND NEW CONSTRUCTION OF APPROXIMATELY 13,014 SQ. FT. AND ALL WORK INCLUDED IN DRAWINGS AND SPECIFICATIONS.
- DEDUCTIVE ALTERNATE 3:** REPLACE NURSE STATION WITH SYSTEMS FURNITURE PROVIDED AND INSTALLED BY VA OUTSIDE THIS CONTRACT.
 - DEDUCTIVE ALTERNATE 4:** DEDUCT COST ASSOCIATED WITH PATIENT LIFTS AND TRACKS. MAINTAIN PASS THROUGH DOOR FRAMES AND PATIENT PRIVACY CURTAINS AND TRACKS. COORDINATE QUANTITIES AND LOCATIONS w/RCP.
 - DEDUCTIVE ALTERNATE 5:** DEDUCT COSTS ASSOCIATED WITH THE DIFFERENCE IN USING PAINTED, HOLLOW METAL DOORS IN LIEU OF WOOD DOORS; CHANGING PAINTED GYP SOFFITS, BULKHEADS, AND CEILINGS TO ACT; SIMPLIFIED FLOORING PATTERNS; REDUCTION OF LIGHTING PACKAGE FROM LED TO COMPACT FLOURESCENT; AND REMOVAL OF CUSTOM MILLWORK/CASEWORK FOR RECEPTION STATION.
 - DEDUCTIVE ALTERNATE 7:** DEDUCT ALL DEMO AND NEW CONSTRUCTION COSTS ASSOCIATED WITH THE FOLLOWING ROOMS: CB-2B, CB-2C, 11, 78, 79, 80, 81, 81-A, 82, 83, 83-A, & 83-B.
 - DEDUCTIVE ALTERNATE 8:** RELOCATE WAITING AREA (48) AND RECEPTION (49) TO SHELL SPACE IN RENOVATION AREA OF BUILDING 2, AND DEDUCT ALL COSTS ASSOCIATED WITH REMOVAL OF THE FOOT PRINT OF THE ADDITION THAT INCLUDES VESTIBULE (47), WAITING AREA (48), & RECEPTION (49); REFER TO A5900 SERIES FOR COMPLETE SCOPE OF DA.



CONSTRUCTION DOCUMENTS FULLY SPRINKLERED

Revisions:	Date
4 ADDENDUM #4	05/16/2016



Corporate Office:
766 Middle St.
Fairhope, AL 36532
Phone: 251.990.5778
Fax: 251.990.3716



Approved: Patient Safety Nurse

Approved: Energy Engineer

Approved: Safety Manager

Approved: Service Chief

Drawing Title
ENLARGED EQUIPMENT PLANS - (SOUTHEAST)

Project Title
RELOCATE AND EXPAND RENAL DIALYSIS

Date
2016.01.22

Project No.
658-315

Drawing No.
QH402

Sheet 84 of 144