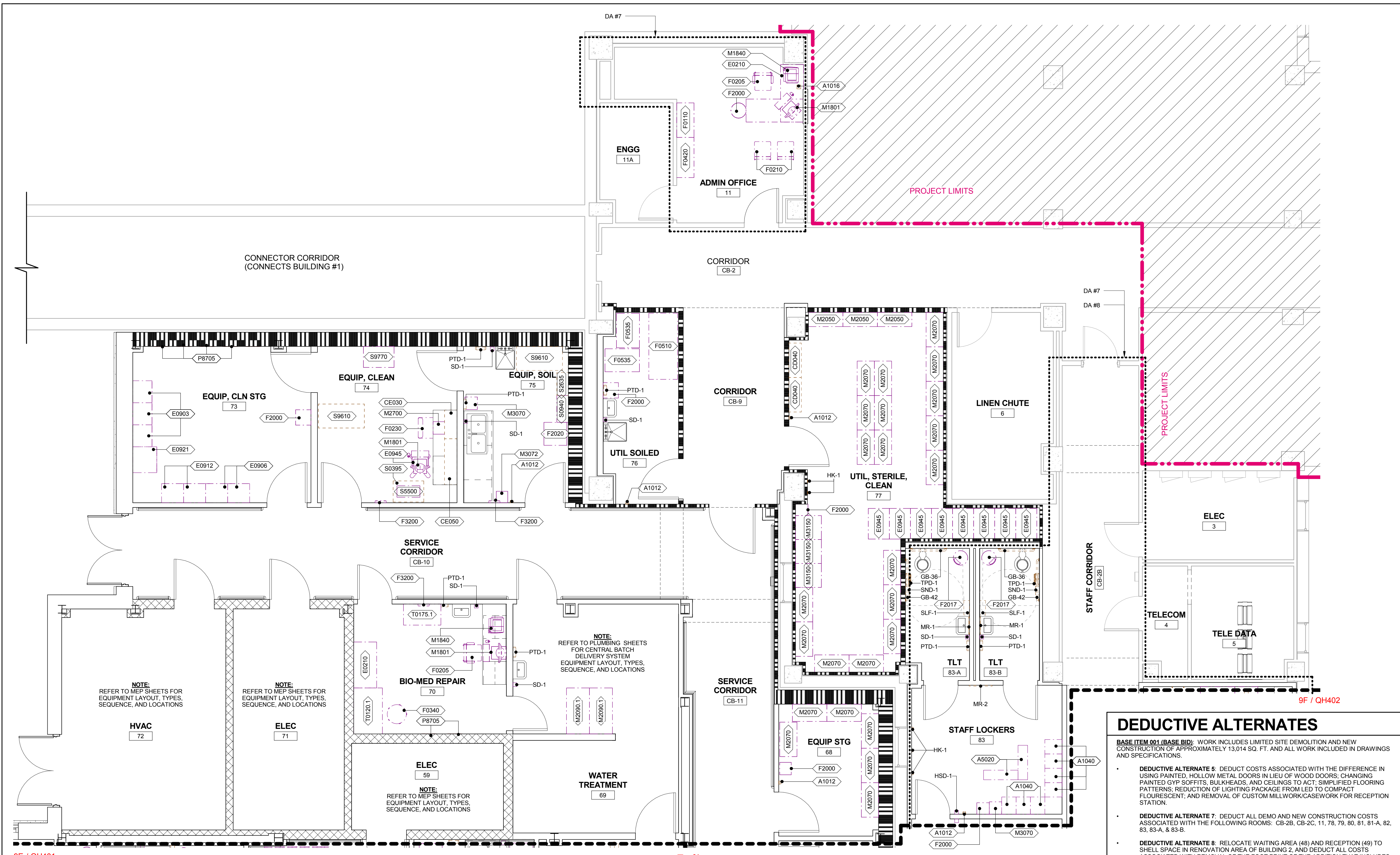


A
three inches = one foot
1
one and one half inches = one foot
2
one inch = one foot
3
one inch = one foot
4
three quarters inch = one foot
5
one half inch = one foot
6
one half inch = one foot
7
three eighths inch = one foot
8
one eighth inch = one foot
9
one eighth inch = one foot
10
one eighth inch = one foot
11
one eighth inch = one foot
12
one eighth inch = one foot
13
one eighth inch = one foot
14
one eighth inch = one foot
15
one eighth inch = one foot
16
one eighth inch = one foot
17
one eighth inch = one foot
18
one eighth inch = one foot
19
one eighth inch = one foot
20
one eighth inch = one foot
21
one eighth inch = one foot
22
one eighth inch = one foot
23
one eighth inch = one foot
24
one eighth inch = one foot
25
one eighth inch = one foot
26
one eighth inch = one foot
27
one eighth inch = one foot
28
one eighth inch = one foot
29
one eighth inch = one foot
30
one eighth inch = one foot
31
one eighth inch = one foot
32
one eighth inch = one foot
33
one eighth inch = one foot
34
one eighth inch = one foot
35
one eighth inch = one foot
36
one eighth inch = one foot
37
one eighth inch = one foot
38
one eighth inch = one foot
39
one eighth inch = one foot
40
one eighth inch = one foot
41
one eighth inch = one foot
42
one eighth inch = one foot
43
one eighth inch = one foot
44
one eighth inch = one foot
45
one eighth inch = one foot
46
one eighth inch = one foot
47
one eighth inch = one foot
48
one eighth inch = one foot
49
one eighth inch = one foot
50
one eighth inch = one foot
51
one eighth inch = one foot
52
one eighth inch = one foot
53
one eighth inch = one foot
54
one eighth inch = one foot
55
one eighth inch = one foot
56
one eighth inch = one foot
57
one eighth inch = one foot
58
one eighth inch = one foot
59
one eighth inch = one foot
60
one eighth inch = one foot
61
one eighth inch = one foot
62
one eighth inch = one foot
63
one eighth inch = one foot
64
one eighth inch = one foot
65
one eighth inch = one foot
66
one eighth inch = one foot
67
one eighth inch = one foot
68
one eighth inch = one foot
69
one eighth inch = one foot
70
one eighth inch = one foot
71
one eighth inch = one foot
72
one eighth inch = one foot
73
one eighth inch = one foot
74
one eighth inch = one foot
75
one eighth inch = one foot
76
one eighth inch = one foot
77
one eighth inch = one foot
78
one eighth inch = one foot
79
one eighth inch = one foot
80
one eighth inch = one foot
81
one eighth inch = one foot
82
one eighth inch = one foot
83
one eighth inch = one foot
84
one eighth inch = one foot
85
one eighth inch = one foot
86
one eighth inch = one foot
87
one eighth inch = one foot
88
one eighth inch = one foot
89
one eighth inch = one foot
90
one eighth inch = one foot
91
one eighth inch = one foot
92
one eighth inch = one foot
93
one eighth inch = one foot
94
one eighth inch = one foot
95
one eighth inch = one foot
96
one eighth inch = one foot
97
one eighth inch = one foot
98
one eighth inch = one foot
99
one eighth inch = one foot
100
one eighth inch = one foot



9E EQUIPMENT PLAN - BASEMENT (NORTH)
1/4" = 1'-0"

DEDUCTIVE ALTERNATES

BASE ITEM 001 (BASE BID): WORK INCLUDES LIMITED SITE DEMOLITION AND NEW CONSTRUCTION OF APPROXIMATELY 13,014 SQ. FT. AND ALL WORK INCLUDED IN DRAWINGS AND SPECIFICATIONS.

- DEDUCTIVE ALTERNATE 6: DEDUCT COSTS ASSOCIATED WITH THE DIFFERENCE IN USING PAINTED, HOLLOW METAL DOORS IN LIEU OF WOOD DOORS; CHANGING PAINTED GYP SOFFITS, BULKHEADS, AND CEILINGS TO ACT: SIMPLIFIED FLOORING PATTERNS; REDUCTION OF LIGHTING PACKAGE FROM LED TO COMPACT FLOURESCENT; AND REMOVAL OF CUSTOM MILLWORK CASEWORK FOR RECEPTION STATION.
- DEDUCTIVE ALTERNATE 7: DEDUCT ALL DEMO AND NEW CONSTRUCTION COSTS ASSOCIATED WITH THE FOLLOWING ROOMS: CB-2B, CB-2C, 11, 78, 79, 80, 81, 81-A, 82, 83, 83-A, & 83-B.
- DEDUCTIVE ALTERNATE 8: RELOCATE WAITING AREA (48) AND RECEPTION (49) TO SHELL SPACE IN RENOVATION AREA OF BUILDING 2; AND DEDUCT ALL COSTS ASSOCIATED WITH REMOVAL OF THE FOOT PRINT OF THE ADDITION THAT INCLUDES VESTIBULE (47), WAITING AREA (48), & RECEPTION (49); REFER TO AE900 SERIES FOR COMPLETE SCOPE OF DA.

GRAPHIC LEGEND

- INDICATES AREA ASSOCIATED WITH DEDUCT ALTERNATES
- INDICATES EXISTING BUILDING TO REMAIN
- EXISTING BUILDING OUTLINE
- PROJECT LIMITS
- VV ITEM - GOVERNMENT FURNISHED / GOVERNMENT INSTALLED
- VC ITEM - GOVERNMENT FURNISHED / CONTRACTOR INSTALLED
- CC ITEM - CONTRACTOR FURNISHED / CONTRACTOR INSTALLED

GENERAL NOTES

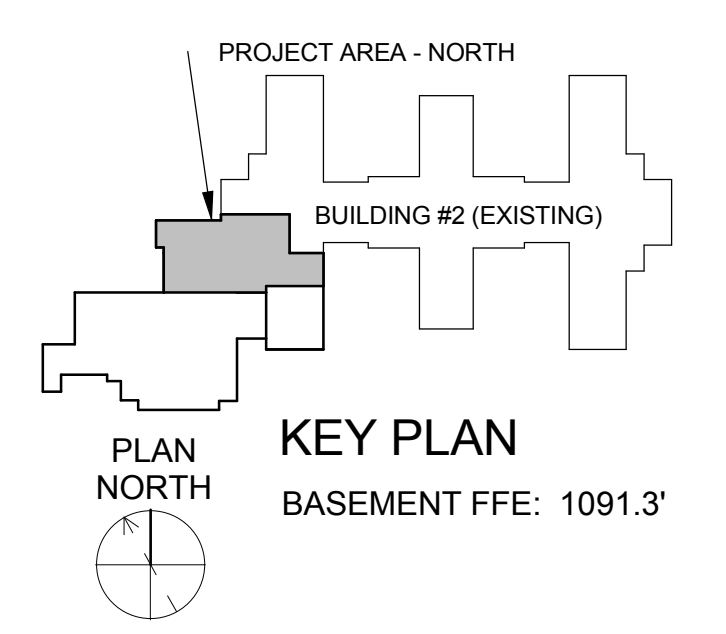
- JSN (JOINT SCHEDULE NUMBERS) ARE BASED ON MIL-STD 1691 MASTER EQUIPMENT LIST.
- ALL DRAWERS AND CABINETS THAT ACCESSIBLE BY PATIENTS NEED TO BE LOCKABLE.
- GRAPHICLY REPRESENTED EQUIPMENT IS FOR REFERENCE ONLY AND MAY NOT DEPECT THE EXACT VA OR CONTRACTOR MODEL TYPE SELECTED.
- REFERENCE SHEET G1002 FOR THE 'EQUIPMENT MOUNTING LEGEND'. EQUIPMENT MOUNTING LEGEND INDICATES HEIGHTS FROM FLOOR, AND OFFSETS FROM WALLS OF EQUIPMENT, AND TOILETS ACCESSORIES TO BE INSTALLED UNO.
- REFERENCE PLUMBING SHEETS FOR EQUIPMENT IN DIALYSATE PREP 66 AND WATER TREATMENT 69

EQUIPMENT SCHEDULE

| MARK | JSN Name | JSN ACQ/INS ASSIGNMENT |
|--|--|------------------------|
| A-ARCHITECTURAL | | |
| A1012 | TELEPHONE, WALL MOUNTED, 1 LINE | CC |
| A1016 | TELEPHONE, DESK, WITH SPEAKER | CC |
| A1040 | LOCKER, 2 PERSON, SIDE BY SIDE, 72x15x18 | VV |
| A5020 | BENCH; LOCKER ROOM; FLOOR MOUNTED | VV |
| C-FIXED CASEWORK | | |
| CD040 | CABINET, W/H, 2 SHELF, 2 DO, SLOPING TOP, 38X36X13 | CC |
| CE030 | CABINET; W/H; 2 SH; 2 GDO; SLOPING TOP; 38X30X13 | CC |
| CE050 | CABINET; W/H; 2 SH; 2 GDO; SLOPING TOP; 38X48X13 | CC |
| E-MODULAR CASEWORK | | |
| E0210 | DESK, DOUBLE PEDESTAL | VV |
| E0903 | LOCKER, SUPPLY, W/ SHELVES WALL MTD 23"W X 20"D | VV |
| E0906 | LOCKER, SUPPLY, GENERAL WALL MTD 23"W X 20"D | VV |
| E0912 | LOCKER, SUPPLY, MED SURG, WALL MTD, 23"Wx20"Dx78"H | VV |
| E0921 | TRANSPORTER, LOCKER, SUPPLY, 27"Wx25"D | VV |
| E0945 | CART, COMPUTER, MOBILE, 36"Hx32"Wx22"D | VV |
| F-FURNITURE AND FURNISHINGS | | |
| F0110 | BOOKCASE, 3 SHELF | VV |
| F0120 | BOOKCASE, EXECUTIVE, 3 SHELF, WOOD | VV |
| F0205 | CHAIR, SIDE, WITH ARMS | VV |
| F0210 | CHAIR, SIDE, WITHOUT ARMS | VV |
| F0230 | CHAIR; DRAFTING; ROTARY | VV |
| F0340 | STOOL, SELF ADJUSTING | VV |
| F0420 | CABINET; FILING; LATERAL; HALF HEIGHT | VV |
| F0510 | CART, SUPPLY, LINEN | VV |
| F0535 | CART; UTILITY | VV |
| F2000 | BASKET, WASTEPAPER, ROUND, METAL | VV |
| F2017 | WASTE RECEPTACLE, 24 GALLON | VV |
| F2020 | CAN, TRASH, 44 GALLON | VV |
| F3010 | BOARD, BULLETIN, 48"W x 48"H | VV |
| F3200 | CLOCK, ATOMIC, BATTERY OPERATED | VV |
| M-MISCELLANEOUS | | |
| M1801 | COMPUTER, MICROPROCESSING, W/FLAT PANEL MONITOR | VV |
| M1840 | PRINTER/COPIER/FAX COMBINATION | VV |
| M2050 | SHELVING, STORAGE, 75"H X 36"W X 14"D | VV |
| M2070 | SHELVING, STORAGE, 77Hx36Wx18D | VV |
| M2090.1 | SHELVING, STORAGE, 36Hx48Wx24D | VV |
| M2700 | SEALER, GEAT, PLASTIC BAG, W/MOTOR, PORTABLE | VV |
| M3070 | HAMPER; LINEN; MOBILE, W/LID | VV |
| M3072 | FRAME, INFECTIOUS WASTE BAG W/ LID | VV |
| M3150 | DISTRIBUTION SYSTEM; MEDICATION; AUTOMATIC | VV |
| P-PLUMBING | | |
| P3100 | LAVATORY; VITREOUS CHINA; SLAB TYPE | CC |
| P8705 | DIALYSIS BOX, RECESSED, SINGLE VALVE | VC |
| S-STERILIZERS AND ASSOCIATED EQUIPMENT | | |
| S0395 | LOADING CAR & TRANSFER CARRIAGE, LARGE CHAMBER | CC |
| S0940 | WASHER/DISINFECTOR, STM, 1DO, RSCD1WLL, 26X24X24 CHAM | VV |
| S2635 | CLEANER, ULTRASONIC, SNGL CHAMBER, CAB, F/S | CC |
| S5500 | STERILIZER, HYDROGEN PEROXIDE GAS, 1.75CU. FT. CHAM | VV |
| S9610 | STATION, UTILITY/RACK | CC |
| S9770 | CART, LOADING, STERILIZABLE | VV |
| T-SHOP EQUIPMENT / TOOLS | | |
| T0120.1 | WORKBENCH, WOOD TOP, 48" (1200 MM) X LENGTH AS REQUIRED X 30" (750 MM) | VV |
| T0175.1 | CABINET, TOOL STORAGE, HEAVY DUTY, 4 SHELVES, 2 DOORS WITH LOCK, 36" X 18" X 84" | VV |

TOILET ACCESSORY SCHEDULE

| MARK | NAME | JSN ACQ/INS ASSIGNMENT |
|-------|--|------------------------|
| GB-36 | (A5109) 36" GRAB BAR, 1-1/4 DIA., SS, WALL, W/C ACCESSIBLE | CC |
| GB-42 | (A5109) 42" GRAB BAR, 1-1/4 DIA., SS, WALL, W/C ACCESSIBLE | CC |
| HK-1 | (A5145) HOOK, GARMENT, DOUBLE, SS, SURFACE MOUNTED | CC |
| HSD-1 | (A5071) DISPENSER; HAND SANITIZER; SURFACE MOUNTED; DISPOSAL | VV |
| MR-1 | (A1066) MIRROR, FLOAT GLASS, WITH SS FRAME | CC |
| MR-2 | MIRROR; POSTURE; WALL MOUNTED | CC |
| PTD-1 | (A5080) DISPENSER, PAPER TOWEL, SS, SURFACE MOUNTED | CC |
| SD-1 | (A5070) DISPENSER; SOAP; DISPOSABLE | VV |
| SLF-1 | (A5162) SHELF; FOLD DOWN; STAINLESS STEEL | CC |
| SND-1 | (A5090) DISPOSAL, SANITARY NAPKIN, SS, SURFACE MOUNTED | CC |
| TPD-1 | (A5200) DISPENSER, TOILET TISSUE, SS, 2-ROLL, SURFACE MNTD | CC |



0 2' 4' 8'
SCALE: 1/4" = 1'-0"

CONSTRUCTION DOCUMENTS
FULLY SPRINKLERED

Revisions:
4 ADDENDUM #4
Date
05/16/2016

Corporate Office:
766 Middle St.
Fairhope, AL 36532
Phone: 251.990.5778
Fax: 251.990.3716

Approved: Patient Safety Nurse

Approved: Energy Engineer

Approved: Safety Manager

Approved: Service Chief

Drawing Title
ENLARGED EQUIPMENT PLANS - (NORTH)

Project Title
RELOCATE AND EXPAND RENAL DIALYSIS

Date
2016.01.22

Project No.
658-315

Drawing No.
QH403

Sheet 85 of 144

Veterans Affairs

Approved: Chief of Police

Approved: Infection Control Officer

Approved: Chief of Staff

Approved: Chief of Facility Management Svc.

Building Number
2

Checked
JDM

Drawn
JB

Location
SALEM VA MEDICAL CENTER

Approved: Chief of Mental Health Service

Approved: GEMS Coordinator

Approved: Associate Director

Approved: Medical Center Director